

Pilot Map

Umpqua Fires

Chilcoot, Ridge

09/21/2023

-  Retardant Avoidance
-  Aerial Hazard (Cell)
-  Dip Site
-  Helispot
-  Helibase
-  Division Break
-  Incident Command Post
-  Staging Area
-  Repeater
-  Aerial Hazard
-  Temporary Flight Restriction
-  Fire Area

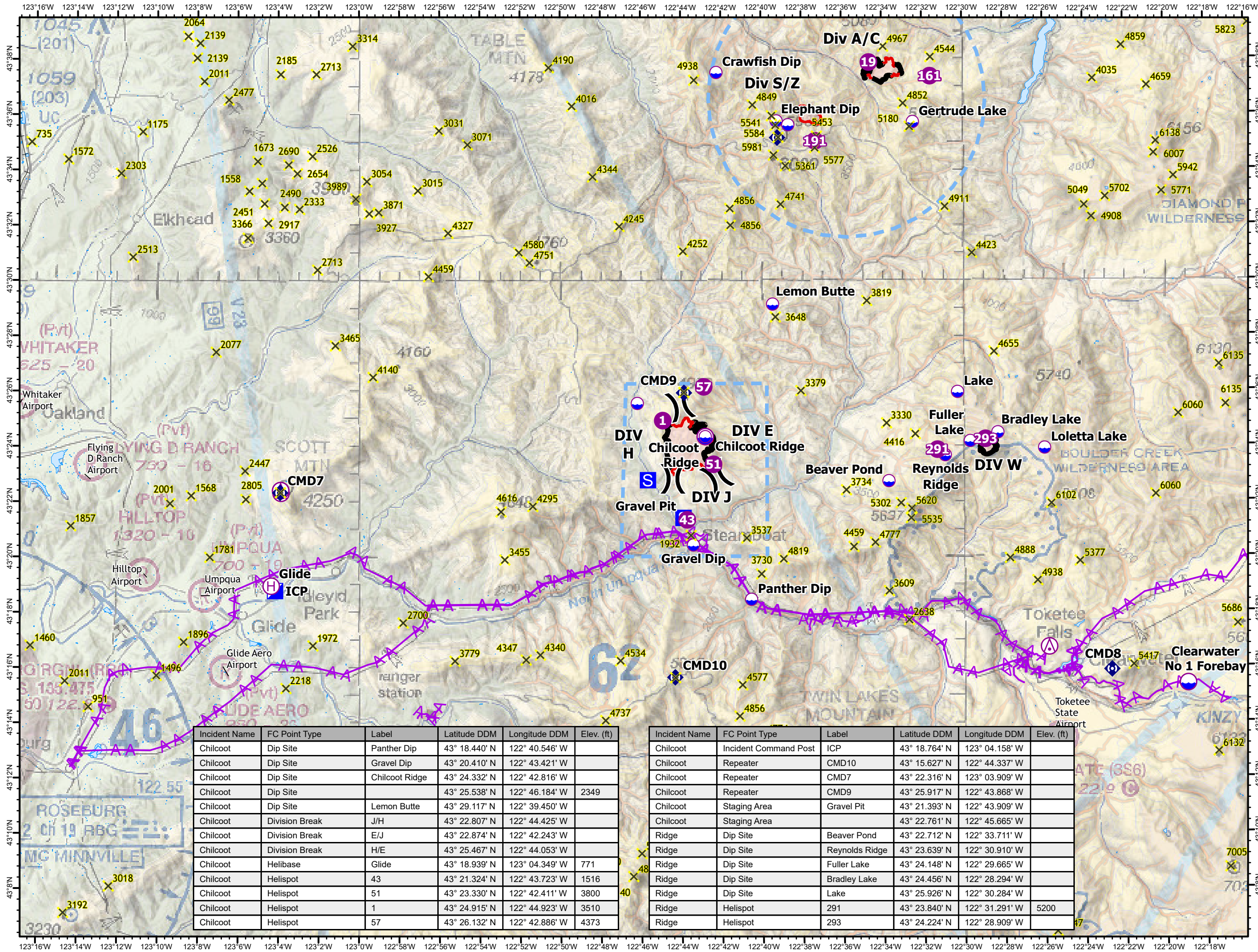


00.51 2 3 4 5

US Nautical Miles



NW Team 6
9/20/2023 2212
Mixed Methods
North American 1983 Datum. LatLong Grid



Incident Name	FC Point Type	Label	Latitude DDM	Longitude DDM	Elev. (ft)
Chilcoot	Dip Site	Panther Dip	43° 18.440' N	122° 40.546' W	
Chilcoot	Dip Site	Gravel Dip	43° 20.410' N	122° 43.421' W	
Chilcoot	Dip Site	Chilcoot Ridge	43° 24.332' N	122° 42.816' W	
Chilcoot	Dip Site		43° 25.538' N	122° 46.184' W	2349
Chilcoot	Dip Site	Lemon Butte	43° 29.117' N	122° 39.450' W	
Chilcoot	Division Break	J/H	43° 22.807' N	122° 44.425' W	
Chilcoot	Division Break	E/J	43° 22.874' N	122° 42.243' W	
Chilcoot	Division Break	H/E	43° 25.467' N	122° 44.053' W	
Chilcoot	Helibase	Glide	43° 18.939' N	123° 04.349' W	771
Chilcoot	Helispot	43	43° 21.324' N	122° 43.723' W	1516
Chilcoot	Helispot	51	43° 23.330' N	122° 42.411' W	3800
Chilcoot	Helispot	1	43° 24.915' N	122° 44.923' W	3510
Chilcoot	Helispot	57	43° 26.132' N	122° 42.886' W	4373

Incident Name	FC Point Type	Label	Latitude DDM	Longitude DDM	Elev. (ft)
Chilcoot	Incident Command Post	ICP	43° 18.764' N	123° 04.158' W	
Chilcoot	Repeater	CMD10	43° 15.627' N	122° 44.337' W	
Chilcoot	Repeater	CMD7	43° 22.316' N	123° 03.909' W	
Chilcoot	Repeater	CMD9	43° 25.917' N	122° 43.868' W	
Chilcoot	Staging Area	Gravel Pit	43° 21.393' N	122° 43.909' W	
Chilcoot	Staging Area		43° 22.761' N	122° 45.665' W	
Ridge	Dip Site	Beaver Pond	43° 22.712' N	122° 33.711' W	
Ridge	Dip Site	Reynolds Ridge	43° 23.639' N	122° 30.910' W	
Ridge	Dip Site	Fuller Lake	43° 24.148' N	122° 29.665' W	
Ridge	Dip Site	Bradley Lake	43° 24.456' N	122° 28.294' W	
Ridge	Dip Site	Lake	43° 25.926' N	122° 30.284' W	
Ridge	Helispot	291	43° 23.840' N	122° 31.291' W	5200
Ridge	Helispot	293	43° 24.224' N	122° 28.909' W	