



INCIDENT ACTION PLAN

Dinner, Grizzly, Brice Creek Fires

August 31, 2023
0700-1900



IAP, MAPS,
CHECKIN, DEMOB

OR-UPF-000357

DINNER

221-ICS

P6 QLJ7 (0615)



BRICE CREEK

P6 QLJ4 (0615)



This page intentionally left blank.



INCIDENT OBJECTIVES (ICS 202)

| | | |
|---|---|---|
| 1. Incident Name: | 2. Operational Period: DAY | |
| DINNER, GRIZZLY & BRICE CREEK FIRES | Date/Time From: 08/31/2023 0700 THU | Date/Time To: 08/31/2023 1900 THU |
| 3. Objective(s): | | |
| <p>Control Objectives:</p> <ul style="list-style-type: none"> • Identify, evaluate and reduce risks to firefighters and the public through the use of Deliberate Risk Assessment process. • Minimize acres burned and impacts to communities and infrastructure by utilizing the Incident Strategic Alignment Process to guide operations in the development of strategies and tactics to be implemented by resources on the Grizzly, Dinner and Brice Creek fires. • Implement strategic actions that have the highest probability of success to mitigate adverse impacts to private properties, including: <ul style="list-style-type: none"> • Bohemian Mining District • Fairview Communication site • Private industrial and non-industrial timber land • Infrastructure & Recreation • Protection of habitat for Threatened and Endangered Species. <p>Management Objectives:</p> <ul style="list-style-type: none"> • Treat each other with dignity and respect and act in a professional manner while on the fire and in the community. • Work Closely with Agency Administrators and Lead Resource Advisor to plan and implement actions that protect sensitive natural and cultural resources at risk from suppression actions. • Maintain and enhance relationships with cooperators, stake holders, landowners, and communities by providing accurate and timely information. • Manage cost commensurate with values at risk and maintain fiscal accountability. | | |
| 4. Operational Period Command Emphasis: | | |
| <p>Implement strategies and tactics to achieve incident objectives with the least amount of risk practical and the highest probability of success. Continue to secure, mop up, and patrol existing firelines. Prepare for and complete burnout of indirect firelines as necessary to increase containment of Grizzly, Dinner and Brice Creek fires. Work diligently to secure and improve containment lines to minimize additional growth. Ensure Initial attack support readiness to respond to new fires and support the local area with any additional starts.</p> | | |
| General Situational Awareness: | | |
| <p>Although weather conditions are expected to moderate in the coming days, fuels are extremely dry from moderate to severe drought conditions. These fires are burning in very steep and difficult terrain where rolling material and snags may present a high risk.</p> | | |
| 5. Site Safety Plan Required? Yes <input type="checkbox"/> No <input checked="" type="checkbox"/> | | |
| Approved Site Safety Plan(s) Located | | |
| 6. Incident Action Plan (the items checked below are included in this Incident Action Plan): | | |
| <input checked="" type="checkbox"/> ICS 202 <input type="checkbox"/> ICS 207 <input checked="" type="checkbox"/> ICS 203 <input type="checkbox"/> ICS 208 <input checked="" type="checkbox"/> ICS 204 <input checked="" type="checkbox"/> ICS 220 <input checked="" type="checkbox"/> ICS 205 <input checked="" type="checkbox"/> Map/Chart <input checked="" type="checkbox"/> ICS 205A <input checked="" type="checkbox"/> Weather Forecast/Tides/Currents <input checked="" type="checkbox"/> ICS 206 | Other Attachments: <input checked="" type="checkbox"/> FIRE BEHAVIOR MESSAGE _____ <input checked="" type="checkbox"/> SAFETY MESSAGE _____ <input checked="" type="checkbox"/> HR MESSAGE _____ <input type="checkbox"/> _____ | |
| 7. Prepared by: JILL JOHNSON | Position/Title: PSC | Signature: <i>Jill Johnson</i> |
| 8. Approved by Incident Commander: | Name: JEFF BOUSCHOR | Signature: <i>Jeff Bouschor</i> |
| ICS 202 | IAP Page | Date/Time: 08/30/2023 2000 |

ORGANIZATION ASSIGNMENT LIST (ICS 203)

| | | | |
|--|--|---|---|
| 1. Incident Name: | | 2. Operational Period: DAY | |
| DINNER, GRIZZLY & BRICE CREEK FIRES | | Date/Time From: 08/31/2023 0700 | THU Date/Time To: 08/31/2023 1900 THU |
| 3. Incident Commander(s) and Command Staff: | | MEDICAL UNIT | LEE VENNING DIANA BRAUN |
| IC/UC | JEFF DIMKE JEFF BOUSCHOR (T) | 7. Operations Section: | |
| DEPUTY | BOB SHINDELAR | PLANNING OPS SECTION CHIEF | MATT CASTLE DEANA WALL (T) |
| SAFETY OFFICER | TROY CORN JAKE CATES | FIELD OPS SECTION CHIEF | KURT RANTA CODY ACORD (T) |
| INFORMATION OFFICER | JOEL BRUMM HEATHER APPELHOF (T) | STRATEGIC OPS SECTION CHIEF | TONY ENGLE AARON ROWE |
| HUMAN RESOURCES | SUSIE MANEZES | | |
| LIAISON OFFICER | JEFF SEVIGNEY JON MEIER (T) | | |
| 4. Agency/Organization Representative(s): | | | |
| Agency/Organization | Name | Branch | GRIZZLY |
| UMPQUA NATIONAL FOREST | DAVID ANDERSON MARK SOMMER | DIVISION/GROUP S | CHRIS WHITE CHRIS RAMISKY (T) |
| ODF | CHRIS CLINE BILL HUNT | DIVISION/GROUP Z | JAMES DICKINSON PAT CHISM |
| LEAD READ | JESSE SOY | DIVISION/GROUP STRUCTURE | MILES POLLACK CHRIS MACHADO (T) |
| 5. Planning Section: | | | |
| CHIEF | JILL JOHNSON | | |
| DEPUTY | SEAN BROGAN | | |
| RESOURCES UNIT | MARGE HUTCHINSON JENNIFER NORTON (T) | | |
| SITUATION UNIT | DAVID WISCHER | DIVISION/GROUP A/C | KEN FOSS; NICK WIGLE JON ELLIS (T) |
| DOCUMENTATION UNIT | DEIDRE SMITH (VIRTUAL) | DIVISION/GROUP D | JERIMAY COKE CARSON ZEPP (T) |
| DEMOBILIZATION UNIT | MIKE HESTON (VIRTUAL) | | |
| IT SPECIALIST | GEORGE JENKINS; VONIETA WOODARD LIBBY EVERETT (T); JUSTIN LEACH (T) | | |
| GIS SPECIALIST | SHAWN BUSHNELL MIKE TONKEL (VIRTUAL) | 7b. Air Operations Branch: | |
| FIRE BEHAVIOR ANALYST | DON STRAND BRYAN GAINES | AIR OPS BRANCH DIRECTOR | PAUL BALFOUR |
| INCIDENT METEOROLOGIST | BOB TOBIN | | |
| 6. Logistics Section: | | 8. Finance/Administration Section: | |
| CHIEF | KEVIN HAUGHTON | CHIEF | CHRISTINA GOEBEL STEVE CROW (T) |
| DEPUTY | WHIT SPENCER | DEPUTY | CHERI FULLER |
| SUPPLY UNIT | JOHN KAUPA THAD FRATER | PROCUREMENT UNIT | TODD POWELL |
| FACILITIES UNIT | BRANDY LANGUM DENISE HILKEY | COMPENSATION UNIT | CHERI FULLER |
| GROUND SUPPORT UNIT | DAVID HARSH TOM FORTIN | COST UNIT | KAY HIGH |
| COMMUNICATIONS UNIT | MISSY PARKER | | |
| 9. Prepared By: | Name: JENNIFER NORTON | Position/Title: RESL (T) | Signature: |
| ICS 203 | IAP Page | Date/Time: 08/30/2023 2100 | <i>Jennifer Norton</i> |

FIRE BEHAVIOR FORECAST

| | |
|--|---|
| FORECAST NUMBER: 1 | TYPE OF FIRE: Wildfire |
| FIRE NAME: Dinner, Grizzly, Brice Creek Fires | OPERATIONAL PERIOD: 0700-1900 hours, August 31, 2023 |
| DATE ISSUED: August 30, 2023 | TIME ISSUED: 2000 Hours |
| UNIT: Umpqua National Forest | SIGNED: Don Strand – FBAN, Bryan Gaines FBAN (t) |

INPUTS

WEATHER SUMMARY: See Fire Weather Forecast for Details

Cloudy with a chance of showers early morning, becoming a general rain late morning.

FUELS:

Fuels in the fire area are primarily composed of *Timber Litter*, and *Timber Understory with moss/lichen present in most stands*. Mature conifer stands with western hemlock and Douglas fir present, generally have heavy surface fuel loading. 30 to 50+ year old second growth conifer stands contain needle litter and some down woody debris. Brush and reproduction present in areas with less dense canopies. Brush and understory species include huckleberry, ocean spray, vine maple, ceanothus, and manzanita.

Today's Forecast ERC=22, 66th percentile 100-hr fuel moisture 18% 1000-hr fuel moisture 15%

OUTPUTS

FIRE BEHAVIOR GENERAL:

Timber litter and duff fuels will support fire spread. Heavy fuels will be resistant to suppression efforts and will support fire spread. Roll outs on steep slopes and burning moss/lichens will contribute to fire spread by spotting. Potential for isolated torching exists in areas with ladder fuels and/or moss/lichen present. Potential exists for hold over spot fires where thicker smoke drift was across fire lines. Fuel conditions likely to prohibit fire operations.

| Fuel Model | ROS (Ft/Min) | | | Flame Length (feet) | | |
|----------------------------|--------------|----------|---------|---------------------|----------|---------|
| | Head | Flanking | Backing | Head | Flanking | Backing |
| TU5 – Understory | 4-6 | 4 | 2 | 6 | 2 | 2 |
| TL4 – Timber Litter | 1 | 1 | <1 | 2 | 1 | 1 |
| TU4 - Timber Litter | 4-5 | 3 | 1 | 5 | 2 | 2 |



PIG- mostly shaded- 45% Max Spotting Distance 0.2 miles Torching Possible Crown Runs Unlikely

(Fire behavior predictions are for the hottest and driest period of the day; Wind slope alignment gusts could increase fire behavior rates.)

FIRE BEHAVIOR SPECIFIC:

Dinner Fire: Monitor for spots along perimeter. Expect backing and flanking fire under closed canopy stands. Roll outs on steep slope likely.

Grizzly Fire: Expect backing and flanking fire spread in areas of heavy surface fuel loading. Potential for roll outs of burning material down slope of fire edge.

Brice Creek Fire: Monitor for hold over spots from yesterday's fire activity. Potential for roll outs on steep slopes.

Initial Attack: In the event resources respond to a new start, recognize that fuels and topography may be different than areas you have previously worked in. Update your situational awareness to any new location or task.

AIR OPERATIONS:

Low clouds and fog may prohibit air operations over the fires.

SAFETY

Watch Out Situation # 13 is emphasized today. "On a hillside where rolling material can ignite fuel below".

Pay attention for fire weakened trees and snags near the fire edges.



SAFETY MESSAGE

31 August 2023

INCIDENT: DINNER, GRIZZLY, BRICE CREEK FIRES

OPERATIONAL PERIOD: 0700-1900

TOPICS:

TRANSFER OF COMMAND

NW12 has assumed command of the incident. Transition of overhead and personnel will continue through the duration of the incident. Transition is a time that can be marred by extreme success or failure. Ensure positive relationship building and open lines of communications. Take a few extra minutes to get to know new personnel and provide a good briefing of actions taken up to the transition.

INCIDENT MEDICAL PLAN

Take a few moments before you engage to review the NW12 Incident Medical Plan along with the MIR located on page 119 in the IRPG. Identify those personnel within your division that are certified EMS responders.



SAFETY OFFICERS: Jack Cates, Troy Corn

Division/Group Assignment List (ICS 204 WF)
Controlled Unclassified Information//Basic

| | | | | | | |
|--|---------|--------------------------------------|---|----------------------------------|--------------------------------|--|
| 1. Incident Name: | | | | 3. | | |
| DINNER, GRIZZLY & BRICE CREEK FIRES | | | | Branch: GRIZZLY | Division/Group S | |
| 2. Operational Period: DAY | | | | | | |
| Date/Time From: 08/31/2023 0700 THU | | Date/Time To: 08/31/2023 1900 THU | | | | |
| 4. Operations Personnel | | | | | | |
| OPERATIONS CHIEF | | KURT RANTA CODY ACORD (T) | | SAFETY OFFICERS | | TROY CORN JACK CATES |
| BRANCH DIRECTOR | | JEROMY WILSON | | DIVISION/GROUP SUPERVISOR | | CHRISTOPHER WHITE CHRIS RAMISKY (T) |
| 5. Resources Assigned this Period | | | | | | |
| Strike Team / Task Force / Resource Designator | | LWD | Leader | Number Persons | Drop Off PT./Time | Pick Up PT./Time |
| O-1.84 SOFR | | | JEFF HIGENS | 1 | BAKER BAY/0700 | BAKER BAY/1900 |
| O-3 TFLD | | | BEN CLINE | 1 | BAKER BAY/0700 | BAKER BAY/1900 |
| O-14 HEQB | | | JOSH BROCK | 1 | BAKER BAY/0700 | BAKER BAY/1900 |
| O- FELB | | | | 1 | BAKER BAY/0700 | BAKER BAY/1900 |
| O- FELB | | | | 1 | BAKER BAY/0700 | BAKER BAY/1900 |
| O- FMOD | | | | 2 | BAKER BAY/0700 | BAKER BAY/1900 |
| C-1 CRW2 PACIFIC OASIS | | | JEFF HENDERSON | 20 | BAKER BAY/0700 | BAKER BAY/1900 |
| C-2 CRW2 TOM FERRY | | | FRANCISCO GARCIA | 20 | BAKER BAY/0700 | BAKER BAY/1900 |
| E-6 DOZ4 R & L | | | CHAD | 1 | BAKER BAY/0700 | BAKER BAY/1900 |
| | | | | | | |
| | | | | | | |
| | | | | | | |
| 6. Control Operations/Work Assignments: | | | | | | |
| <p>TASK: Construct direct and indirect fireline and secure perimeter. PURPOSE: Prevent fire from impacting values at risk, including historic mining community and infrastructure, timberlands, T & E habitat, and communities to the West. END STATE: Fire is kept W of the 2214 Road, north of Grizzly Mtn, east of the 2473 Road, and south of Jumbo Creek, to protect the values at risk through the remainder of the fire season.</p> | | | | | | |
| 7. Special Instructions: | | | | | | |
| For this DIV - add GRIZZLY FIRE to all CTRs & Shift tickets | | | | | | |
| 8. Division/Group Communication Summary | | | | | | |
| Function | Channel | RX Frequency N/W | RX Tone/NAC | TX Frequency N/W | TX Tone/NAC | Mode |
| TACTICAL | 11 | 151.3400 | 156.7 | 151.3400 | 156.7 | A |
| COMMAND | 3 | 170.5500 | 103.5 | 164.8000 | 173.33 | A |
| AIR TO GROUND | 13 | 165.9875 | | 165.9875 | | A |
| AIR TO GROUND | 14 | 173.5000 | | 173.5000 | | A |
| 9. Prepared By (Resource Unit Leader) | | | Approved By (Planning Section Chief) | | Date | Time |
| MARGE HUTCHINSON | | | JILL JOHNSON | | 08/30/2023 | 2000 |

Division/Group Assignment List (ICS 204 WF)

Controlled Unclassified Information//Basic

| | | | | | | |
|--|---------|---|-------------------|---|------------------|------|
| 1. Incident Name: | | | 3. | | | |
| DINNER, GRIZZLY & BRICE CREEK FIRES | | | GRIZZLY | Z | | |
| 2. Operational Period: DAY | | | | | | |
| Date/Time From: 08/31/2023 0700 | THU | Date/Time To: 08/31/2023 1900 | THU | | | |
| 4. Operations Personnel | | | | | | |
| OPERATIONS CHIEF | | KURT RANTA CODY ACORD (T) | | SAFETY OFFICERS | | |
| BRANCH DIRECTOR | | JEROMY WILSON | | DIVISION/GROUP SUPERVISOR | | |
| | | | | TROY CORN JACK CATES JAMES DICKINSON PAT CHISM (T) | | |
| 5. Resources Assigned this Period | | | | | | |
| Strike Team / Task Force / Resource Designator | LWD | Leader | Number Persons | Drop Off PT./Time | Pick Up PT./Time | |
| O-36 SOFC | | RICHARD M MCCONNELL | 1 | BAKER BAY/0700 | BAKER BAY/1900 | |
| O-4 TFLD | | KYLE HEFLIN | 1 | BAKER BAY/0700 | BAKER BAY/1900 | |
| C-3 CRW2 AFS | | NOE | 20 | BAKER BAY/0700 | BAKER BAY/1900 | |
| C-6 CRW2 TOM FERRY | | | 10 | BAKER BAY/0700 | BAKER BAY/1900 | |
| | | | | | | |
| | | | | | | |
| | | | | | | |
| | | | | | | |
| | | | | | | |
| | | | | | | |
| | | | | | | |
| 6. Control Operations/Work Assignments: | | | | | | |
| <p>TASK: Construct direct and indirect fireline and secure perimeter. PURPOSE: Prevent fire from impacting values at risk, including historic mining community and infrastructure, timberlands, T & E habitat, and communities to the West. END STATE: Fire is kept W of the 2214 Road, north of Grizzly Mtn, east of the 2473 Road, and south of Jumbo Creek, to protect the values at risk through the remainder of the fire season.</p> | | | | | | |
| 7. Special Instructions: | | | | | | |
| For this DIV - add GRIZZLY FIRE to all CTRs & Shift tickets | | | | | | |
| 8. Division/Group Communication Summary | | | | | | |
| Function | Channel | RX Frequency N/W | RX Tone/NAC | TX Frequency N/W | TX Tone/NAC | Mode |
| TACTICAL | 11 | 151.3400 | 156.7 | 151.3400 | 156.7 | A |
| COMMAND | 3 | 170.5500 | 103.5 | 164.8000 | 173.33 | A |
| AIR TO GROUND | 13 | 165.9875 | | 165.9875 | | A |
| AIR TO GROUND | 14 | 173.5000 | | 173.5000 | | A |
| 9. Prepared By (Resource Unit Leader) | | Approved By (Planning Section Chief) | | Date | Time | |
| MARGE HUTCHINSON | | JILL JOHNSON | | 08/30/2023 | 2000 | |

Division/Group Assignment List (ICS 204 WF)
Controlled Unclassified Information//Basic

| | | | | | | |
|---|--------------------------------------|------------------------------|---|----------------------------------|-----------------------|-----------------------------------|
| 1. Incident Name: | | | 3. | | | |
| DINNER, GRIZZLY & BRICE CREEK FIRES | | | Branch: | | Division/Group | |
| 2. Operational Period: DAY | | | GRIZZLY | | STRUCTURE | |
| Date/Time From: 08/31/2023 0700 THU | Date/Time To: 08/31/2023 1900 THU | | | | | |
| 4. Operations Personnel | | | | | | |
| OPERATIONS CHIEF | | KURT RANTA CODY ACORD (T) | | SAFETY OFFICERS | | TROY CORN JACK CATES |
| BRANCH DIRECTOR | | JEROMY WILSON | | DIVISION/GROUP SUPERVISOR | | MILES POLLACK CRIS MACHADO (T) |
| 5. Resources Assigned this Period | | | | | | |
| Strike Team / Task Force / Resource Designator | | LWD | Leader | Number Persons | Drop Off PT./Time | Pick Up PT./Time |
| O-1 TFLD | | | JUSTIN WHITE | 1 | BAKER BAY/0700 | BAKER BAY/1900 |
| C-4 CRW2 STRATA | | | SALVADOR | 10 | BAKER BAY/0700 | BAKER BAY/1900 |
| C-5 CRW2 STRATA | | | ALDOLOL | 10 | BAKER BAY/0700 | BAKER BAY/1900 |
| C-7 CRW2 TOM FERRY | | | | 20 | BAKER BAY/0700 | BAKER BAY/1900 |
| | | | | | | |
| | | | | | | |
| | | | | | | |
| | | | | | | |
| 6. Control Operations/Work Assignments: | | | | | | |
| <p>TASK: Provide structure protection assessment, planning, and preparation. PURPOSE: Minimize fire impacts to private residences and historic structures in the fire area. END STATE: Area to be protected is prepped and secured, including trigger points identified to implement any additional measures.</p> | | | | | | |
| 7. Special Instructions: | | | | | | |
| For this DIV - add GRIZZLY FIRE to all CTRs & Shift tickets | | | | | | |
| 8. Division/Group Communication Summary | | | | | | |
| Function | Channel | RX Frequency N/W | RX Tone/NAC | TX Frequency N/W | TX Tone/NAC | Mode |
| TACTICAL | 11 | 151.3400 | 156.7 | 151.3400 | 156.7 | A |
| COMMAND | 3 | 170.5500 | 103.5 | 164.8000 | 173.33 | A |
| AIR TO GROUND | 13 | 165.9875 | | 165.9875 | | A |
| AIR TO GROUND | 14 | 173.5000 | | 173.5000 | | A |
| 9. Prepared By (Resource Unit Leader) | | | Approved By (Planning Section Chief) | | Date | Time |
| MARGE HUTCHINSON | | | JILL JOHNSON | | 08/30/2023 | 2000 |

Division/Group Assignment List (ICS 204 WF)
Controlled Unclassified Information//Basic

| | | | | | | |
|--|---------|--------------------------------------|---|----------------------------------|---|--|
| 1. Incident Name: | | | | 3. | | |
| DINNER, GRIZZLY & BRICE CREEK FIRES | | | | Branch: | Division/Group A / C | |
| 2. Operational Period: DAY | | | | | | |
| Date/Time From: 08/31/2023 0700 THU | | Date/Time To: 08/31/2023 1900 THU | | | | |
| 4. Operations Personnel | | | | | | |
| OPERATIONS CHIEF | | KURT RANTA CODY ACORD (T) | | SAFETY OFFICERS | | TROY CORN JACK CATES |
| BRANCH DIRECTOR | | | | DIVISION/GROUP SUPERVISOR | | KEN FOSS NICK WIGLE, JOHN ELLIS (T) |
| 5. Resources Assigned this Period | | | | | | |
| Strike Team / Task Force / Resource Designator | | LWD | Leader | Number Persons | Drop Off PT./Time | Pick Up PT./Time |
| O-1.32 SOF2 | | 09/12 | PAUL BRNA | 1 | LAYNG STAGING/0700 | SHARPS CREEK BASE CAMP/1900 |
| O-2 FMOD | | 09/10 | MARTIN PICKLE | 2 | LAYNG STAGING/0700 | SHARPS CREEK BASE CAMP/1900 |
| O-45 FELB | | 09/10 | BEN JONGEWARD | 1 | LAYNG STAGING/0700 | SHARPS CREEK BASE CAMP/1900 |
| C-9 CRW1 - PRESCOTT IHC | | 09/10 | DARIN FISHER | 20 | LAYNG STAGING/0700 | SHARPS CREEK BASE CAMP/1900 |
| C-12 CRW1 - SILVER STATE IHC | | | KEVIN KELLY | 22 | LAYNG STAGING/0700 | SHARPS CREEK BASE CAMP/1900 |
| C-1 CRW2 NORTH REFORESTATION CREW -2 | | 09/01 | JOSE RINCON | 20 | LAYNG STAGING/0700 | SHARPS CREEK BASE CAMP/1900 |
| C-2 T2IA GREYBACK 13A | | 09/09 | RONALD WOOD | 20 | LAYNG STAGING/0700 | SHARPS CREEK BASE CAMP/1900 |
| C-5 CRW2 T2C224 STEELHEAD CREW-1 | | 09/10 | PEDRO WRIGHT | 20 | LAYNG STAGING/0700 | SHARPS CREEK BASE CAMP/1900 |
| C-8 CRW2 WEST COAST REFOREST CREW -1 | | 09/11 | HOMER HERNANDEZ | 20 | LAYNG STAGING/0700 | SHARPS CREEK BASE CAMP/1900 |
| C-13 T2IA GREYBACK 13B | | 09/09 | CAMDEN RHIEINHART | 20 | LAYNG STAGING/0700 | SHARPS CREEK BASE CAMP/1900 |
| C- T2IA TETON | | 09/11 | CLEA BERTHOLET | 22 | LAYNG STAGING/0700 | SHARPS CREEK BASE CAMP/1900 |
| E- ENG6 FWF ENG 654 | | 09/05 | MIKE GRAHAM | 4 | LAYNG STAGING/0700 | SHARPS CREEK BASE CAMP/1900 |
| E- ENG6 UMITILLA | | | | | LAYNG STAGING/0700 | SHARPS CREEK BASE CAMP/1900 |
| E-5 ENG4 DIAMOND | | 09/02 | DEAN WILSON | 3 | LAYNG STAGING/0700 | SHARPS CREEK BASE CAMP/1900 |
| E-10 ENG6 E658 | | 09/09 | CLAY GOBLEMANN | 3 | LAYNG STAGING/0700 | SHARPS CREEK BASE CAMP/1900 |
| 8. Division/Group Communication Summary | | | | | | |
| Function | Channel | RX Frequency N/W | RX Tone/NAC | TX Frequency N/W | TX Tone/NAC | Mode |
| TACTICAL | 5 | 169.1250 | 103.5 | 169.1250 | 103.5 | A |
| COMMAND | 3 | 170.5500 | 103.5 | 164.8000 | 173.33 | A |
| AIR TO GROUND | 13 | 165.9875 | | 165.9875 | | A |
| AIR TO GROUND | 14 | 173.5000 | | 173.5000 | | A |
| 9. Prepared By (Resource Unit Leader) | | | Approved By (Planning Section Chief) | | Date | Time |
| MARGE HUTCHINSON | | | JILL JOHNSON | | 08/30/2023 | 2000 |

Division/Group Assignment List (ICS 204 WF)
Controlled Unclassified Information//Basic

| | | | | | | |
|---|---------|--------------------------------------|---|----------------------------------|---|--|
| 1. Incident Name: | | | | 3. | | |
| DINNER, GRIZZLY & BRICE CREEK FIRES | | | | Branch: | Division/Group A / C | |
| 2. Operational Period: DAY | | | | | | |
| Date/Time From: 08/31/2023 0700 THU | | Date/Time To: 08/31/2023 1900 THU | | | | |
| 4. Operations Personnel | | | | | | |
| OPERATIONS CHIEF | | KURT RANTA CODY ACORD (T) | | SAFETY OFFICERS | | TROY CORN JACK CATES |
| BRANCH DIRECTOR | | | | DIVISION/GROUP SUPERVISOR | | KEN FOSS NICK WIGLE, JOHN ELLIS (T) |
| 5. Resources Assigned this Period | | | | | | |
| Strike Team / Task Force / Resource Designator | | LWD | Leader | Number Persons | Drop Off PT./Time | Pick Up PT./Time |
| E-2 WTS2 RHXDEM | | 09/10 | RUSSEL ROBISON | 1 | LAYNG STAGING/0700 | SHARPS CREEK BASE CAMP/1900 |
| E-9 WTS1 IRELAND | | 09/12 | ADAM FRAISER | 1 | LAYNG STAGING/0700 | SHARPS CREEK BASE CAMP/1900 |
| | | | | | | |
| | | | | | | |
| | | | | | | |
| | | | | | | |
| | | | | | | |
| | | | | | | |
| | | | | | | |
| 6. Control Operations/Work Assignments: | | | | | | |
| <p>TASK: Construct direct and indirect fireline and secure perimeter. PURPOSE: Prevent fire from impacting values at risk, including timberlands, T & E habitat, and communities to the West. END STATE: Fire is kept north of the 22 Road, south of the 2216 Road, and east of 732 Road, to protect the values at risk through the remainder of the fire season.</p> | | | | | | |
| 7. Special Instructions: | | | | | | |
| For this DIV - add BRICE CREEK FIRE to all CTRs & Shift tickets | | | | | | |
| 8. Division/Group Communication Summary | | | | | | |
| Function | Channel | RX Frequency N/W | RX Tone/NAC | TX Frequency N/W | TX Tone/NAC | Mode |
| TACTICAL | 5 | 169.1250 | 103.5 | 169.1250 | 103.5 | A |
| COMMAND | 3 | 170.5500 | 103.5 | 164.8000 | 173.33 | A |
| AIR TO GROUND | 13 | 165.9875 | | 165.9875 | | A |
| AIR TO GROUND | 14 | 173.5000 | | 173.5000 | | A |
| 9. Prepared By (Resource Unit Leader) | | | Approved By (Planning Section Chief) | | Date | Time |
| MARGE HUTCHINSON | | | JILL JOHNSON | | 08/30/2023 | 2000 |

Division/Group Assignment List (ICS 204 WF)

Controlled Unclassified Information//Basic

| | | | | | | |
|---|---------|--------------------------------------|---|----------------------------------|-----------------------|--------------------------------|
| 1. Incident Name: | | | 3. | | | |
| DINNER, GRIZZLY & BRICE CREEK FIRES | | | Branch: | | Division/Group | |
| 2. Operational Period: DAY | | | | | | |
| Date/Time From: 08/31/2023 0700 THU | | Date/Time To: 08/31/2023 1900 THU | | D | | |
| 4. Operations Personnel | | | | | | |
| OPERATIONS CHIEF | | KURT RANTA CODY ACORD (T) | | BRANCH DIRECTOR | | |
| SAFETY OFFICERS | | TROY CORN JACK CATES | | DIVISION/GROUP SUPERVISOR | | |
| JEREMIAH COKE CARSON ZEPP (T) | | | | | | |
| 5. Resources Assigned this Period | | | | | | |
| Strike Team / Task Force / Resource Designator | | LWD | Leader | Number Persons | Drop Off PT./Time | Pick Up PT./Time |
| O-1.32 SOF2 | | 09/12 | PAUL BRNA | 1 | LAYNG STAGING/0700 | SHARPS CREEK BASE CAMP/1900 |
| O-1 FMOD | | 09/10 | BRYER ZIMMERMAN | 2 | LAYNG STAGING/0700 | SHARPS CREEK BASE CAMP/1900 |
| O-1 FMOD A AND CCUTTING | | 09/09 | ELIJAH | 2 | LAYNG STAGING/0700 | SHARPS CREEK BASE CAMP/1900 |
| O-21 FMOD | | 08/12 | ZELLER | 2 | LAYNG STAGING/0700 | SHARPS CREEK BASE CAMP/1900 |
| C-1 T2IA ALTA PACIFIC | | 09/12 | LEO TORRES | 20 | LAYNG STAGING/0700 | SHARPS CREEK BASE CAMP/1900 |
| C-4 T2IA LAVA RIVER FORESTRY CREW - 5 | | 09/12 | JESUS RUIZ | 20 | LAYNG STAGING/0700 | SHARPS CREEK BASE CAMP/1900 |
| C-5 T2IA LOST RIVER | | 09/09 | AARON VASILIS | 20 | LAYNG STAGING/0700 | SHARPS CREEK BASE CAMP/1900 |
| C- T2IA UPF CREW | | 09/08 | VINCENT MARTINO | 20 | LAYNG STAGING/0700 | SHARPS CREEK BASE CAMP/1900 |
| E-1 DZR4 | | 09/10 | LEVI SUTPHIN | 1 | LAYNG STAGING/0700 | SHARPS CREEK BASE CAMP/1900 |
| E-3 SKG1 HYDROCAT | | 09/13 | MARK RICOR | 2 | LAYNG STAGING/0700 | SHARPS CREEK BASE CAMP/1900 |
| E-10 AMBU 1 - BEST PRACTICES | | | BRODY | 2 | LAYNG STAGING/0700 | SHARPS CREEK BASE CAMP/1900 |
| 6. Control Operations/Work Assignments: | | | | | | |
| <p>TASK: Construct direct and indirect fireline and secure perimeter.</p> <p>PURPOSE: Prevent fire from impacting values at risk, including timberlands, T & E habitat, and communities to the West.</p> <p>END STATE: Fire is kept north of the 1745 Rd and south of the 1746 road to protect the values at risk through the remainder of the fire season.</p> | | | | | | |
| 7. Special Instructions: | | | | | | |
| For this DIV - add DINNER FIRE to all CTRs & Shift tickets | | | | | | |
| 8. Division/Group Communication Summary | | | | | | |
| Function | Channel | RX Frequency N/W | RX Tone/NAC | TX Frequency N/W | TX Tone/NAC | Mode |
| TACTICAL | 7 | 167.3750 | 103.5 | 167.3750 | 103.5 | A |
| COMMAND | 3 | 170.5500 | 103.5 | 164.8000 | 173.33 | A |
| AIR TO GROUND | 13 | 165.9875 | | 165.9875 | | A |
| AIR TO GROUND | 14 | 173.5000 | | 173.5000 | | A |
| 9. Prepared By (Resource Unit Leader) | | | Approved By (Planning Section Chief) | | Date | Time |
| MARGE HUTCHINSON | | | JILL JOHNSON | | 08/30/2023 | 2000 |

| | | | | | | |
|--|--|---------------------------------|--------------------------|--------------------------|------------------------|--|
| AIR OPERATIONS SUMMARY 220 | | Prepared/Approved: Paul Balfour | Prepared: 8/30/2023 | Prepared Time: 1800 hrs. | | |
| 1. INCIDENT NAME: DINNER/GRIZZLY/BRICE CREEK | 2. OPERATIONAL PERIOD 08/31/2023 | START TIME: 0700 | END TIME: 2000 | SUNRISE: 0634 | SUNSET: 1950 | |

| | | |
|---|---|--|
| 3. REMARKS (Safety Notes, Hazards, Air Operations Special Equipment, etc.). <p style="text-align: center;"><u>WATCH OUTS</u> Smoky conditions * Steep terrain * Shadow effects Avoid foam within 300' of waterways, or bodies of water. Notify the AOBD if this happens.</p> <p style="text-align: center;">Aircraft costs daily to: bal4@pauljbalfour.com</p> | 4. READY ALERT AIRCRAFT: N38HX Shorthaul @ Sunriver ORNG Medivac: Roseburg Order through RICC See Medical Plan, last page of IAP | 5.TFR: #3/2352 (A-) Freq 121.3750 Operational 1500-0400 UTC |
| | | |

| 6. PERSONNEL | | | 7. FREQUENCIES | | | 8. FIXED-WING Avail/ Type/ Make-Model/ N#/ Base |
|--|---------------|--------------|---------------------|----------|---------------------------------|---|
| NAME | PHONE # | | AM | FM | | |
| Helibase | | | A/A TFR and Primary | 121.3750 | | |
| | | | A/A Secondary (A- | 127.0750 | | |
| | | | A/A Tertiary (A- | 123.9250 | | |
| AOBD | Paul Balfour | 509-993-8739 | A/G Primary (A- | | 165.9875 | AIRTANKERS: ORDER THRU ATGS ATGS – order through Roseberg Dispatch Landing Sites on Fire: See pilot map Layng Cr Helispot: 43°42'29"N X 122°44'21"W 1224ft Helena Saddle: 43°34'57"N X 122°37'19"W 5203ft Cottage Grove: 43°48'15"N X 123°1'55"W 641ft <p style="text-align: center;">Tank Dips</p> |
| ASGS | | | A/G Secondary (A- | | 173.5000 | |
| ASGS(t) | | | Deck (A- | | | |
| ATGS | | | TOLC (A- | | | |
| HEBM | | | | | | |
| HEBM(t) | | | IA A/G White ODF | | | |
| ORRIC | Aircraft Desk | 541-957-3325 | IA A/G 49 USFS | | 168.0375 | |
| UAO | Jim Dotson | 307-413-2024 | VMED29 | | Rx/Tx 155.3475 rx/tx tn156.7 | |
| Willy Acton UAO: 208-507-0942 73H Michael Wales 813-326-2469 9FF Joe Bradshaw 775-271-9284 | | | CTAF | | 122.8 | |
| | | | Air Guard | | 168.6250 tx tn110.9 | |

| FAA N# | T Y | MAKE/ MODEL | BASE | START | AVAIL | REMARKS | FAA N# | T Y | MAKE/ MODEL | BASE | START | AVAIL | REMARKS |
|--------------|-----|-------------|---------|-------|-------|---------|--------------|-----|-------------|---------|-------|-------|-------------|
| N2773H (A-4) | 2 | 205 A1 ++ | Cottage | 0800 | 0900 | | N519FF (A-6) | 3 | AS 350 | Cottage | 0800 | 0900 | 5 personnel |
| | | | | | | | | | | | | | |
| | | | | | | | | | | | | | |
| | | | | | | | | | | | | | |

INCIDENT RADIO COMMUNICATIONS PLAN (ICS 205)

Controlled Unclassified Information//Basic

| | | | |
|-------------------------------------|--------------------------------|--|--------------------------------------|
| 1. Incident Name: | 2. Date/Time Prepared: | 3. Operational Period: DAY | |
| DINNER, GRIZZLY & BRICE CREEK FIRES | Date: 08/30/2023 Time: 2000 | Date/Time From: 08/31/2023 0700 THU | Date/Time To: 08/31/2023 1900 THU |

4. Basic Radio Channel Use:

| Zone Group | Ch # | Function | Channel Name/Trunked Radio System Talkgroup | Assignment | RX Freq | RX Tone/NAC | TX Freq | TX Tone/NAC | Mode (A,D, or M) | Remarks |
|------------|------|---------------|---|--------------------|----------|-------------|----------|-------------|------------------|-----------------------|
| | | | | | | | | | | |
| | | | | | | | | | | |
| | 3 | COMMAND | N FAIRVW | ALL FIRES | 170.5500 | 103.5 | 164.8000 | 173.33 | A | |
| | | | | | | | | | | |
| | 5 | TACTICAL | NURD PRJ | DIVS A/C | 169.1250 | 103.5 | 169.1250 | 103.5 | A | BRICE FIRE |
| | | | | | | | | | | |
| | 7 | TACTICAL | CG/T PRJ | DIV D | 167.3750 | 103.5 | 167.3750 | 103.5 | A | DINNER FIRE |
| | 8 | COMMAND | ODF FV | | 151.2200 | | 159.3975 | 179.9 | A | ODF FAIRVIEW REPEATER |
| | | | | | | | | | | |
| | | | | | | | | | | |
| | 11 | TACTICAL | ODF RED NET | DIVS S/Z/STRUCTURE | 151.3400 | 156.7 | 151.3400 | 156.7 | A | GRIZZLY FIRE |
| | | | | | | | | | | |
| | 13 | AIR TO GROUND | A/G PRI | ALL FIRES | 165.9875 | | 165.9875 | | A | |
| | 14 | AIR TO GROUND | A/G SEC | ALL FIRES | 173.5000 | | 173.5000 | | A | |
| | 15 | AIR TO GROUND | VMED 29 | MEDICAL EVAC ONLY | 155.3475 | 156.7 | 155.3475 | 156.7 | A | |
| | 16 | AIR GUARD | AIRGUARD | EMER AIR OPS ONLY | 168.6250 | | 168.6250 | 110.9 | A | |

5. Special Instructions:

| | | |
|---|-------------------------|----------------------------|
| 6. Prepared By (Communications Unit Leader) | Name: MISSY PARKER,COML | Signature: |
| ICS 205 | IAP Page | Date/Time: 08/30/2023 2000 |



Human Resource Message

August 31, 2023





Human Resource Specialist (HRSP) on Incident

Hello everyone, as the Human Resource Specialist on this incident, my role is to serve as a focal point for informal resolution of issues or concerns of alleged harassment or discrimination.

I will also serve as a channel for individuals assigned to this fire to raise questions, discuss concerns, and get answers to aspects of the work environment, operating procedures, work conditions, policies, or just general questions.

**If you need to talk, please contact me,
Susie Manezes, HRSP at: (602) 571-9327**

You may call, text, or email me at any time if you have any issues, questions, or concerns, related to this fire assignment. My office is located at the Dorena Grange Hall on Row River Road, east of Cottage Grove, Oregon.

| | | |
|---|---|---|
|  | <p>Patience is the word of the day, as we transfer command and set up camp. Be patient, kind, and respectful.</p> |  |
|---|---|---|

Please stay safe and have a great day!

Contact Information - Human Resource Specialist: Susie Manezes
Cell Phone: 602-571-9327
Email: smanezes@blm.gov



Finance Message



Finance Email: 2023.dinner.finance@firenet.gov

SUBJECT: *Include Key Word **TIME** for Overhead, Crews & Cooperators*

SUBJECT: *Include Key Word **EQUIPMENT** for Contract Resources*

Temporary Finance Phone : 509-423-6011

FINANCE CHECK IN: 2023.dinner.finance@firenet.gov


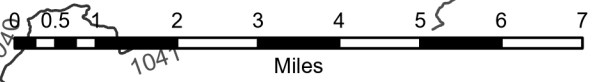
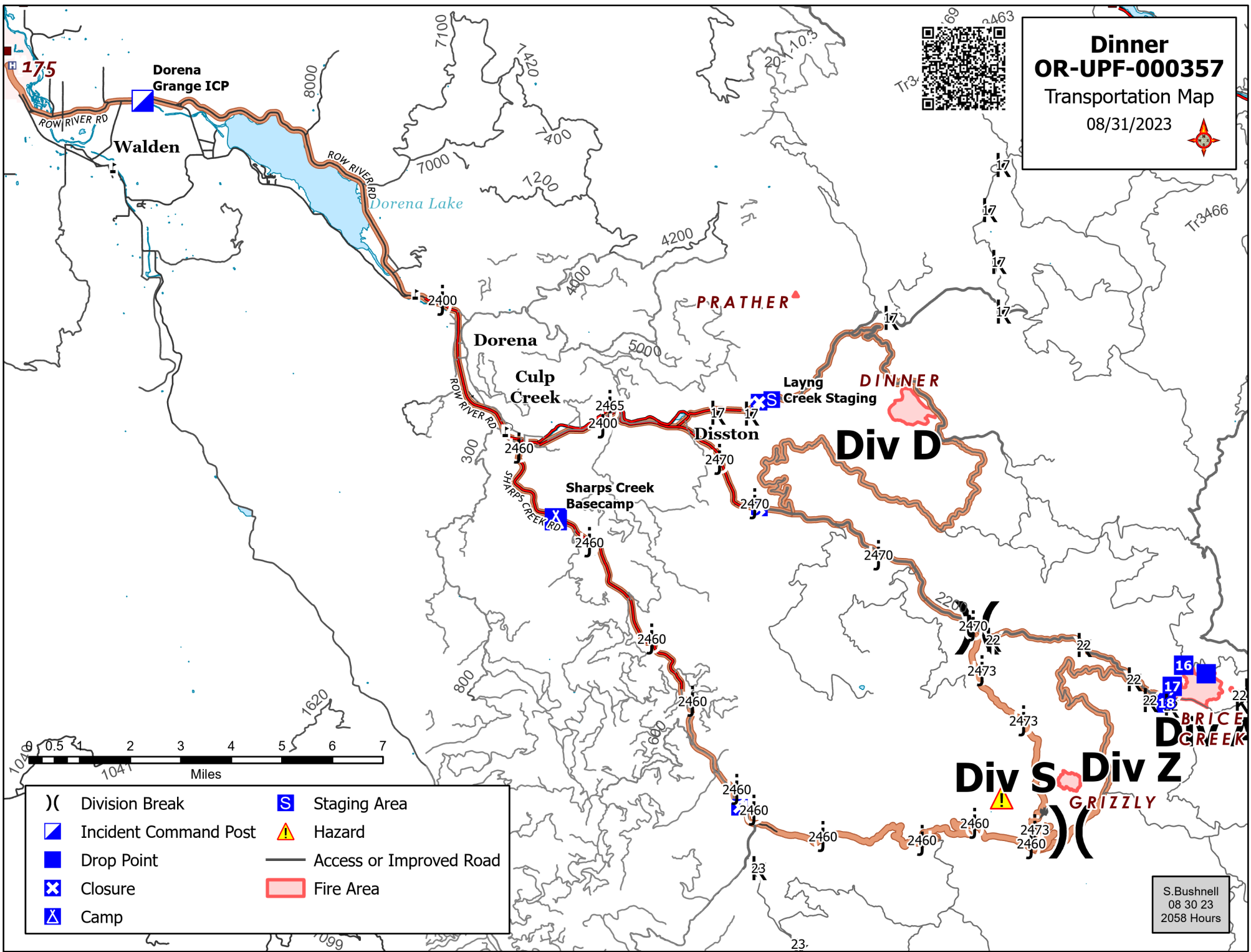
PLEASE ENSURE THE BELOW DOCUMENTS ARE EMAILED

| Overhead, Crews & Cooperator Resources | Contract Resources |
|---|---|
| <ul style="list-style-type: none"> • Check-In: Crew Manifest, Cooperative Agreement (if applies), AD Hire Letter, Resource Order • Daily: Crew Time Report (CTR), Shift Tickets • Demob: Signed OF288, Final Equipment Use Invoice (Cooperator) If you don't have a way to sign you must come to finance. | <ul style="list-style-type: none"> • Check-In: Resource Order, Contract/VIPR Agreement (make sure you have your UEI, Pre-Inspection • Daily: Shift Tickets, receipts (fuel issues, claims, etc.) • Demob: Contractor Evaluations, Final Shift Tickets and receipt(s) for Addition/Deductions, Post-Inspection, Final Signed Invoices If you don't have a way to sign you must come to finance |

REMINDERS

- ★ PLEASE ENSURE YOU INCLUDE LOCATION OF WHERE YOU ARE WORKING (DINNER, BRICE CREEK, GRIZZLY) ON THE CTR OR SHIFT TICKET. MAKE SURE O, C OR E # IS ON THE CTR OR SHIFT TICKET
- ★ PLEASE SHOW YOUR LUNCH BREAK
- ★ PLEASE USE MILITARY TIME (0001-2400)
- ★ WHEN CLAIMING HAZARD PAY YOU MUST INCLUDE THE SUPPRESSION ACTION BEING PERFORMED. THIS INCLUDES OPERATIONS WHICH DIRECTLY SUPPORT CONTROL OF FIRE (E.G., ACTIVITIES TO EXTINGUISH THE FIRE, FIREFIGHTING, GROUND SCOUTING, SPOT FIRE PATROLLING, SEARCH AND RESCUE OPERATIONS, AND BACKFIRING).

Dinner
OR-UPF-000357
 Transportation Map
 08/31/2023

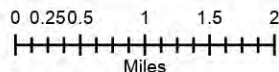
| | | | |
|--|-----------------------|--|-------------------------|
| | Division Break | | Staging Area |
| | Incident Command Post | | Hazard |
| | Drop Point | | Access or Improved Road |
| | Closure | | Fire Area |
| | Camp | | |

S. Bushnell
 08 30 23
 2058 Hours

Dinner OR-UPF-000357 IAP Map

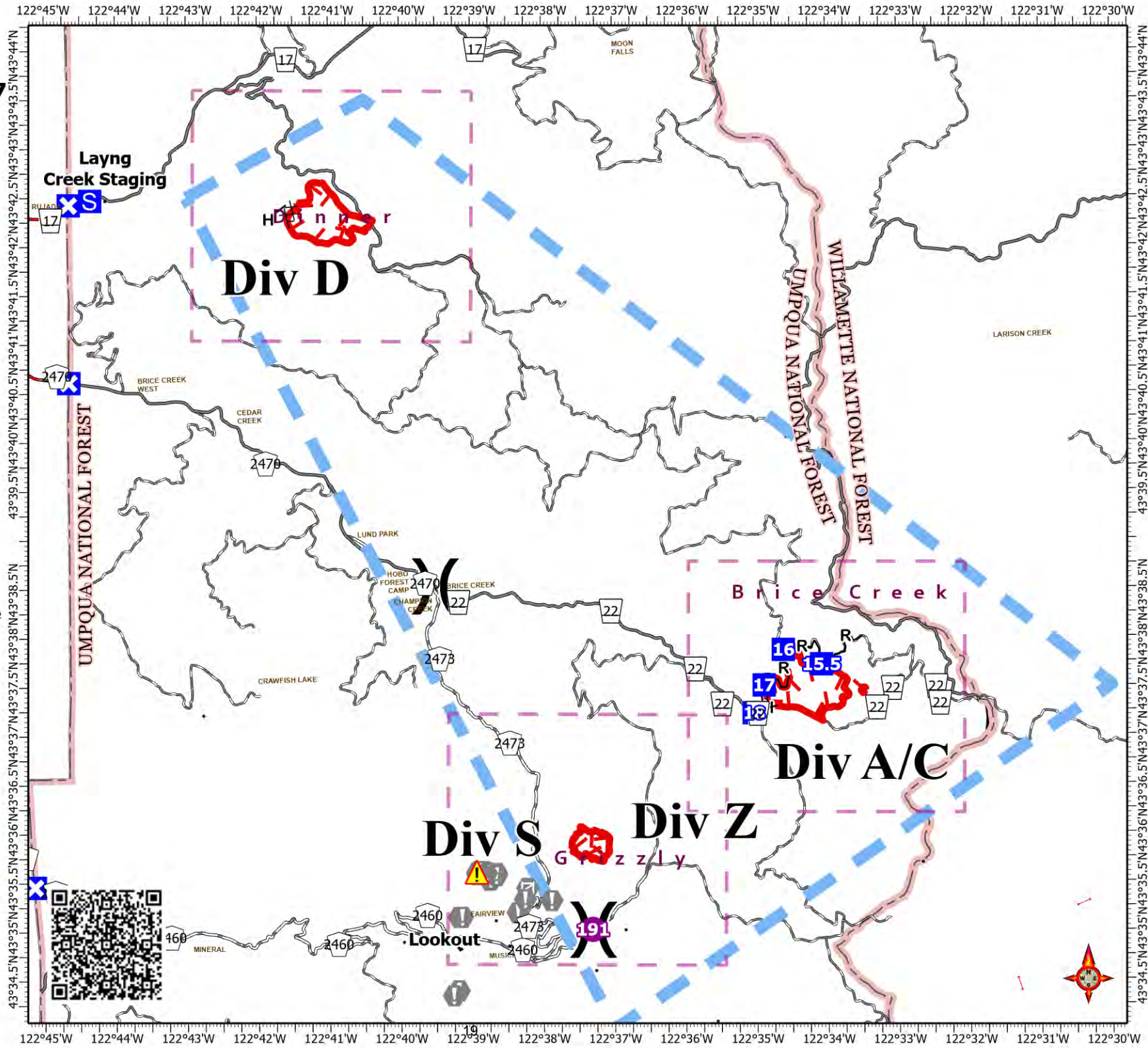
08/31/2023
acres at

- Helispot
-) (Division Break
- Drop Point
- ⊠ Closure
- Ⓢ Staging Area
- Ⓜ Value at Risk
- Ⓜ Gate
- ⚠ Hazard
- ⓧⓧ Completed Dozer Line
- H Completed Hand Line
- R Completed Road as Line
- Access or Improved Road
- Temporary Flight Restriction
- └ Uncontained Fire Edge
- Highway
- Road - Light Duty - Dirt
- Road - Light Duty - Gravel
- Road - Light Duty - Paved



S. Bushnell
08 30 23
2100 Hours

Acres from IR and GPS
Datum: North American 1983

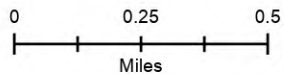
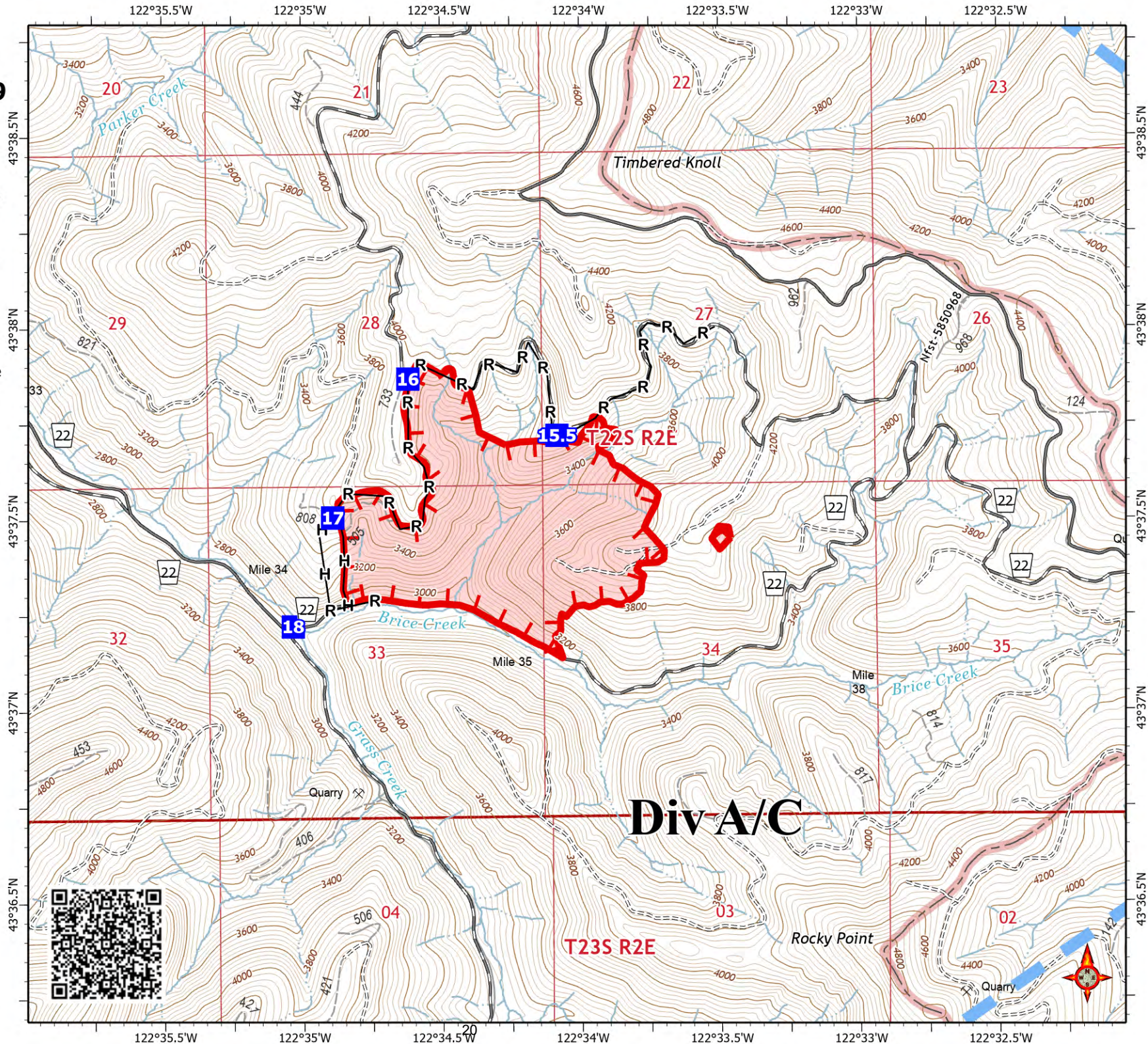


Brice Creek OR-UPF-000359 IAP Map

08/31/2023

296 acres at 8/30/2023 18:00:00

- Drop Point
- Completed Hand Line
- Completed Road as Line
- Temporary Flight Restriction
- Uncontained Fire Edge
- Road - Light Duty - Gravel
- Road - Light Duty - Paved
- Road - Unimproved
- Local Road
- 4WD
- Trail
- Fire Area



S. Bushnell
08 30 23
2059 Hours

Acres from IR and GPS
Datum: North American 1983

Div A/C

T23S R2E

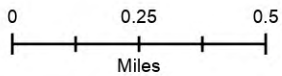
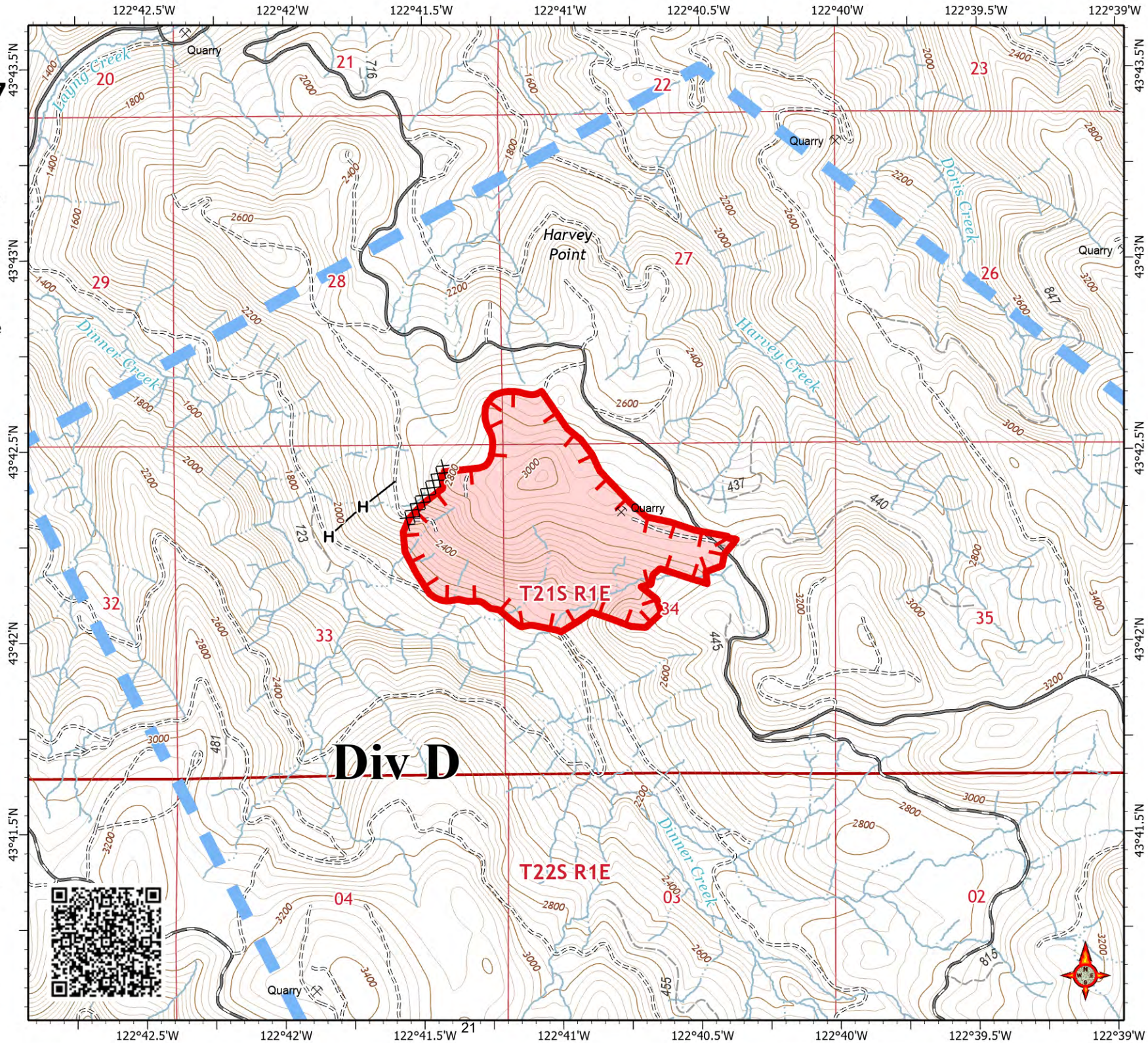
Rocky Point

Dinner OR-UPF-000357 IAP Map

08/31/2023

245 acres at 8/30/2023 18:00:00

- ⊗⊗ Completed Dozer Line
- H Completed Hand Line
- ▬ Temporary Flight Restriction
- ┌ Uncontained Fire Edge
- Road - Light Duty - Gravel
- Road - Light Duty - Paved
- - - Road - Unimproved
- Local Road
- - - 4WD
- - - Trail
- Fire Area



S. Bushnell
08 30 23
2100 Hours

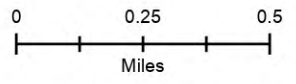
Acres from IR and GPS
Datum: North American 1983

Grizzly OR-UPF-000341 IAP Map

08/31/2023

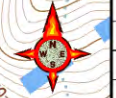
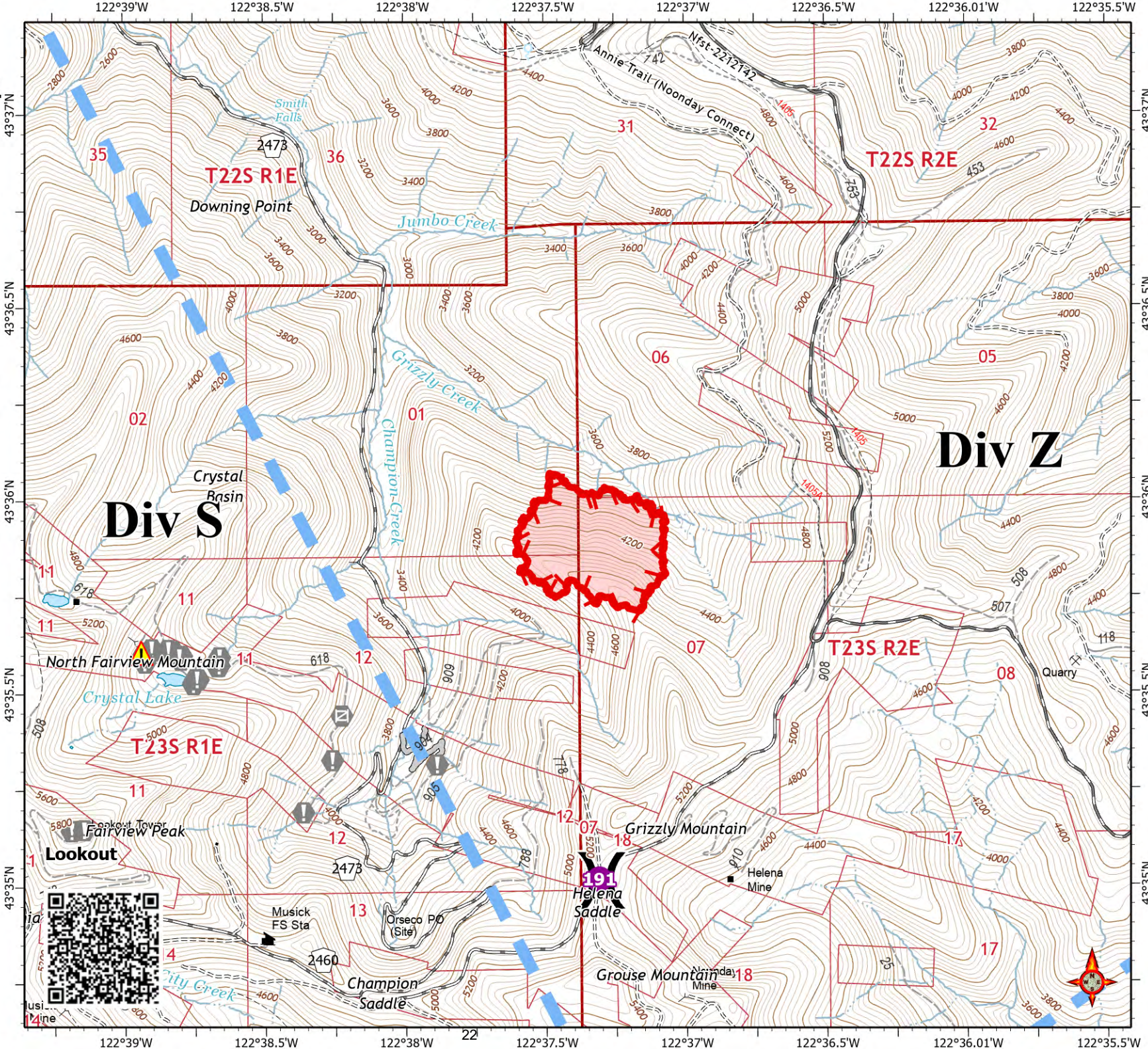
78 acres at 8/29/2023 09:19:00

- Helispot
-) (Division Break
- ⚠ Value at Risk
- ⚡ Gate
- ⚠ Hazard
- Structures
- ▴ Forest Service Facility
- Lookout - Permanent
- Access or Improved Road
- Road
- ▬ Temporary Flight Restriction
- ┌ Uncontained Fire Edge
- Road - Light Duty - Dirt
- Road - Light Duty - Gravel
- Road - Unimproved
- - - Trail
- Local Road
- 4WD
- - - Trail
- Fire Area



S. Bushnell
08 30 23
2100 Hours

Acres from IR and GPS
Datum: North American 1983





EMERGENCY PLAN INCIDENT WITHIN AN INCIDENT

ON SCENE INCIDENT COMMANDER

In the event of an accident or medical incident of any size, your primary responsibility is to ENSURE that the victim(s) receive prompt and effective Triage, Treatment, Extrication and Transport.

- **ENSURE THE MEDICAL INCIDENT REPORT IN THE INCIDENT ACTION PLAN IS BEING USED AND FOLLOWED- *IF DETERMINED TO BE A GREEN, DO NOT DECLARE EMERGENCY TRAFFIC AND ONLY COMPLETE LINE 1-4 ON MIR*.**
- Conduct size-up of the incident nature of accident, number type of resources involved, latitude and longitude location (DD°MMM.MM format): notify incident communications center and supervisor, request assistance as needed.
- Order and coordinate medical and support response to the accident.
- Evaluate special needs (law enforcement, haz mat, etc.).
- Clear the command frequency if medical emergency, coordinate with incident communications and air attack for air medical transportation needs.
- Preserve and photograph the scene for accident investigation.
- Remain aware of surroundings and the status of the main incident (delegate personnel to monitor the main fire) to ensure safety of medical treatment personnel.
- Until relieved, supervise and manage all personnel involved at the incident scene.

MEDICAL PLAN (ICS 206 WF)

| Incident/Project Name | | | | Operational Period | | | | |
|---|---|---|------------------------------------|--------------------------|--|-------------------|--|-------------------------------|
| Dinner, Grizzly, Brice Creek Fires | | | | 8/31/2023 0700 - 1900 | | | | |
| Ambulance Services | | | | | | | | |
| Name | Complete Address | Phone | Advanced Life Support (ALS) | | | | | |
| | | | Yes | No | | | | |
| South Lane Fire & Rescue | 233 E Harrison Ave Cottage Grove, OR 97424 | 911 | X | | | | | |
| Eugene Springfield Fire Dept | Multiple Stations Eugene & Springfield | 911 | X | | | | | |
| North Douglas County Fire & EMS | 531 S Cedar St., Drain, OR 97435 | 911 | X | | | | | |
| Air Ambulance Services | | | | | | | | |
| Name | Phone | Capability | | | | | | |
| Life Flight | Use VMED 29 air to ground | Critical Care Medic/RN Night Capable 100x100 LZ | | | | | | |
| Oregon Army National Guard | Use VMED 29 air to ground Roseburg, OR | MEDIC Night Vision Capable | | | | | | |
| Teton Short Haul | Use VMED 29 air to ground Sunriver, OR | EMT Daytime Use Only | | | | | | |
| Hospitals | | | | | | | | |
| Name Complete Address | Coordinate Standard Degrees Decimal Minutes DD° MM.MMM' N - Lat DD° MM.MMM' W - Long | | Travel Time From ICP Air Gnd | | Phone | Helipad Yes No | | Level of Care Facility |
| | | Lat: | | | | | | |
| Sacred Heart Medical Center (Riverbend) 3333 Riverbend, Drive Springfield, OR | Long: | 44°04.876' N | 15 min | 30 min | 541-222-6931 | X | | Level 2 |
| | | 123°01.588' W | | | | | | |
| Legacy Emanuel 2801 N Gantenbien Portland, OR | Long: | 45°32.668' N | 1hr | 2hr | 503-413-3121 | X | | Level 1 Trauma Burn Center |
| | | 122°40.293' W | | | | | | |
| Peace Health Cottage Grove Community Medical Center 1515 Village Dr Cottage Grove, OR 97424 | Long: | 43°48.2292' N | 10 min | 10 min | 541-767-5500 | X | | Basic |
| | | 123°2.3801' W | | | | | | |
| Division Branch Group | Capability | | | | Personnel | | | |
| Grizzly Fire S | | | | | REMS Pending Ambo Pending EMPF Pending | | | |
| Grizzly Fire Z | | | | | REMS Pending EMPF Pending | | | |
| Grizzly Fire Structure Group | | | | | Utilize Local Resources | | | |
| Dinner Fire Div D | | | | | Ambo 1 (E-10) EMPF Pending | | | |

MEDICAL PLAN (ICS 206 WF)

| | | | |
|--|-------------------|-------------------------------------|--|
| Brice Creek Fire Div A | | REMS Pending Ambo Pending | |
| Brice Creek Fire Div C | | EMPF Pending | |
| Sharps Base | ALS kit, OTC meds | Lee Venning MEDL (O-1.44) | |
| Dorena Grange ICP | BLS kit, OTC meds | Diana Braun MEDL (O-1.45) | |
| Prepared By (Medical Unit Leader) | | Reviewed By (Safety Officer) | |
| Diana Braun | | Jack Cates | |
| Date/Time | | Date/Time | |
| 8/30/2023 | | 8/30/2023 | |

MEDICAL PLAN (ICS 206 WF)

Controlled Unclassified Information//Basic

Medical Incident Report

FOR A NON-EMERGENCY INCIDENT, WORK THROUGH CHAIN OF COMMAND TO REPORT AND TRANSPORT INJURED PERSONNEL AS NECESSARY.

FOR A MEDICAL EMERGENCY: IDENTIFY ON SCENE INCIDENT COMMANDER BY NAME AND POSITION AND ANNOUNCE "MEDICAL EMERGENCY" TO INITIATE RESPONSE FROM IMT COMMUNICATIONS/DISPATCH.

Use the following items to communicate situation to communications/dispatch.

1. CONTACT COMMUNICATIONS / DISPATCH (Verify correct frequency prior to starting report)

Ex: "Communications, Div. Alpha. Stand-by for Emergency Traffic."

2. INCIDENT STATUS: Provide incident summary (including number of patients) and command structure.

Ex: "Communications, I have a Red priority patient, unconscious, struck by a falling tree. Requesting air ambulance to Forest Road 1 at (Lat./Long.) This will be the Trout Meadow Medical, IC is TFLD Jones. EMT Smith is providing medical care."

| | | |
|---|---|---|
| Severity of Emergency / Transport Priority | <input type="checkbox"/> RED / PRIORITY 1 Life or limb threatening injury or illness. Evacuation need is IMMEDIATE <i>Ex: Unconscious, difficulty breathing, bleeding severely, 2° – 3° burns more than 4 palm sizes, heat stroke, disoriented.</i> <input type="checkbox"/> YELLOW / PRIORITY 2 Serious Injury or illness. Evacuation may be DELAYED if necessary. <i>Ex: Significant trauma, unable to walk, 2° – 3° burns not more than 1-3 palm sizes.</i> <input type="checkbox"/> GREEN / PRIORITY 3 Minor Injury or illness. Non-Emergency transport <i>Ex: Sprains, strains, minor heat-related illness.</i> | |
| Nature of Injury or Illness & Mechanism of Injury | | <i>Brief Summary of Injury or Illness (Ex: Unconscious, Struck by Falling Tree)</i> |
| Transport Request | | <i>Air Ambulance / Short Haul/Hoist Ground Ambulance / Other</i> |
| Patient Location | | <i>Descriptive Location & Lat. / Long. (WGS84)</i> |
| Incident Name | | <i>Geographic Name + "Medical" (Ex: Trout Meadow Medical)</i> |
| On-Scene Incident Commander | | <i>Name of on-scene IC of Incident within an Incident (Ex: TFLD Jones)</i> |
| Patient Care | | <i>Name of Care Provider (Ex: EMT Smith)</i> |

3. INITIAL PATIENT ASSESSMENT: Complete this section for each patient as applicable (start with the most severe patient)

Patient Assessment: See IRPG page 106

Treatment:

4. TRANSPORT PLAN:

Evacuation Location (if different): (Descriptive Location (drop point, intersection, etc.) or Lat. / Long.) Patient's ETA to Evacuation Location:

Helispot / Extraction Site Size and Hazards:

5. ADDITIONAL RESOURCES / EQUIPMENT NEEDS:

Example: Paramedic/EMT, Crews, Immobilization Devices, AED, Oxygen, Trauma Bag, IV/Fluid(s), Splints, Rope rescue, Wheeled litter, HAZMAT, Extrication

6. COMMUNICATIONS: Identify State Air/Ground EMS Frequencies and Hospital Contacts as applicable

| Function | Channel Name/Number | Receive (RX) | Tone/NAC * | Transmit (TX) | Tone/NAC * |
|-------------|---------------------|--------------|------------|---------------|------------|
| COMMAND | | | | | |
| AIR-TO-GRND | | | | | |
| TACTICAL | | | | | |

7. CONTINGENCY: Considerations: If primary options fail, what actions can be implemented in conjunction with primary evacuation method? Be thinking ahead.

8. ADDITIONAL INFORMATION: Updates/Changes, etc.

REMEMBER: Confirm ETA's of resources ordered. Act according to your level of training. Be Alert. Keep Calm. Think Clearly. Act Decisively.

Controlled Unclassified Information//Basic