

INCIDENT ACTION PLAN

Dinner, Grizzly, Brice Creek Fires

September 1, 2023
0700-1900



**IAP, MAPS,
CHECKIN**

DINNER
221-ICS
P6 QLJ7

GRIZZLY
P6 QL0W

BRICE CREEK
P6 QLJ4



INCIDENT OBJECTIVES (ICS 202)

1. Incident Name:	2. Operational Period: DAY	
DINNER, GRIZZLY & BRICE CREEK FIRES	Date/Time From: 09/01/2023 0700 FRI	Date/Time To: 09/01/2023 1900 FRI
3. Objective(s):		
<p>Control Objectives:</p> <ul style="list-style-type: none"> • Identify, evaluate and reduce risks to firefighters and the public through the use of Deliberate Risk Assessment process. • Minimize acres burned and impacts to communities and infrastructure by utilizing the Incident Strategic Alignment Process to guide operations in the development of strategies and tactics to be implemented by resources on the Grizzly, Dinner, and Brice Creek Fires • Implement strategic actions that have the highest probability of success to mitigate adverse impacts to private properties, including: <ul style="list-style-type: none"> • Bohemia Mining District • Fairview Communication site • Private industrial and non-industrial timber land • Infrastructure & Recreation • Protection of habitat for Threatened and Endangered Species. <p>Management Objectives:</p> <ul style="list-style-type: none"> • Treat each other with dignity and respect and act in a professional manner while on the fire and in the community. • Work Closely with Agency Administrators and Lead Resource Advisor to plan and implement actions that protect sensitive natural and cultural resources at risk from suppression actions. • Maintain and enhance relationships with cooperators, stakeholders, landowners, and communities by providing accurate and timely information. • Manage cost commensurate with values at risk and maintain fiscal accountability. 		
4. Operational Period Command Emphasis:		
<p>Implement strategies and tactics to achieve incident objectives with the least amount of risk practical and the highest probability of success. Continue to secure, mop up, and patrol existing firelines. Prepare for and complete burnout of indirect firelines as necessary to increase containment of Grizzly, Dinner, and Brice Creek fires. Work diligently to secure and improve containment lines to minimize additional growth. Ensure initial attack support readiness to respond to new fires and support the local area with any additional starts.</p>		
General Situational Awareness:		
<p>Although weather conditions are expected to moderate in the coming days, fuels are extremely dry from moderate to severe drought conditions. These fires are burning in very steep and difficult terrain where rolling material and snags may present a high risk.</p>		
5. Site Safety Plan Required? Yes <input type="checkbox"/> No <input checked="" type="checkbox"/>		
Approved Site Safety Plan(s) Located		
6. Incident Action Plan (the items checked below are included in this Incident Action Plan):		
<input checked="" type="checkbox"/> ICS 202 <input type="checkbox"/> ICS 207 <input checked="" type="checkbox"/> ICS 203 <input type="checkbox"/> ICS 208 <input checked="" type="checkbox"/> ICS 204 <input checked="" type="checkbox"/> ICS 220 <input checked="" type="checkbox"/> ICS 205 <input checked="" type="checkbox"/> Map/Chart <input checked="" type="checkbox"/> ICS 205A <input checked="" type="checkbox"/> Weather Forecast/Tides/Currents <input checked="" type="checkbox"/> ICS 206	Other Attachments: <input checked="" type="checkbox"/> FIRE BEHAVIOR MESSAGE _____ <input checked="" type="checkbox"/> SAFETY MESSAGE _____ <input checked="" type="checkbox"/> HR MESSAGE _____ <input type="checkbox"/> _____	
7. Prepared by: JILL JOHNSON	Position/Title: PSC	Signature: <i>Jill Johnson</i>
8. Approved by Incident Commander:	Name: JEFF BOUSCHOR	Signature: <i>Jeff Bouschor</i>
ICS 202	IAP Page	Date/Time: 08/31/2023 2100

ORGANIZATION ASSIGNMENT LIST (ICS 203)

1. Incident Name:		2. Operational Period: DAY	
DINNER, GRIZZLY & BRICE CREEK FIRES		Date/Time From: 09/01/2023 0700 FRI	Date/Time To: 09/01/2023 1900 FRI
3. Incident Commander(s) and Command Staff:		GROUND SUPPORT UNIT	DAVID HARSH TOM FORTIN
IC/UC	JEFF DIMKE JEFF BOUSCHOR (T)	COMMUNICATIONS UNIT	MISSY PARKER
DEPUTY	BOB SHINDELAR	MEDICAL UNIT	LEE VENNING DIANA BRAUN
SAFETY OFFICER	TROY CORN JAKE CATES; TAIJA CORSO	7. Operations Section:	
INFORMATION OFFICER	JOEL BRUMM HEATHER APPELHOF (T)	PLANNING OPS SECTION CHIEF	MATT CASTLE DEANA WALL (T)
HUMAN RESOURCES	SUSIE MANEZES	FIELD OPS SECTION CHIEF	KURT RANTA CODY ACORD (T)
LIAISON OFFICER	JEFF SEVIGNEY JON MEIER (T)	STRATEGIC OPS SECTION CHIEF	TONY ENGLE AARON ROWE
4. Agency/Organization Representative(s):			
Agency/Organization	Name		
UMPQUA NATIONAL FOREST	DAVID ANDERSON, JACK LEWIS CARIN VADALA (T)		
ODF	CHRIS CLINE BILL HUNT	Branch	GRIZZLY
WILLAMETTE NATIONAL FOREST	MOLLY JULLERAT	BRANCH DIRECTOR	JEROMY WILSON
BUREAU OF LAND MANAGMENT	DENNIS TEIZEL	DIVISION/GROUP	S
LEAD READ - USFS	JESSE SOY		CHRIS WHITE CHRIS RAMISKEY (T)
5. Planning Section:		DIVISION/GROUP	Z
CHIEF	JILL JOHNSON		JAMES DICKINSON; BOB HINDS PAT CHISM (T)
DEPUTY	SEAN BROGAN	DIVISION/GROUP	STRUCTURE
RESOURCES UNIT	MARGE HUTCHINSON JENNIFER NORTON (T)		MILES POLLACK CHRIS MACHADO (T)
SITUATION UNIT	DAVID WISCHER	DIVISION/GROUP	A
DOCUMENTATION UNIT	DEIDRE SMITH (VIRTUAL)		KEN FOSS NICK WIGLE (T)
DEMOBILIZATION UNIT	MIKE HESTON (VIRTUAL)	DIVISION/GROUP	C
IT SPECIALIST	GEORGE JENKINS; VONIETA WOODARD LIBBY EVERETT (T); JUSTIN LEACH (T)	DIVISION/GROUP	D
GIS SPECIALIST	SHAWN BUSHNELL MIKE TONKEL (VIRTUAL)		JERIMIAH COKE CARSON ZEPP (T)
FIRE BEHAVIOR ANALYST	DON STRAND BRYAN GAINES	7b. Air Operations Branch:	
INCIDENT METEOROLOGIST	BOB TOBIN	AIR OPS BRANCH DIRECTOR	PAUL BALFOUR
6. Logistics Section:		8. Finance/Administration Section:	
CHIEF	KEVIN HAUGHTON	CHIEF	CHRISTINA GOEBEL STEVE CROW (T)
DEPUTY	WHIT SPENCER	DEPUTY	CHERI FULLER
SUPPLY UNIT	JOHN KAUPA THAD FRATER	PROCUREMENT UNIT	TODD POWELL
FACILITIES UNIT	BRANDY LANGUM DENISE HILKEY	COMPENSATION UNIT	CHERI FULLER
		COST UNIT	KAY HIGH
9. Prepared By:	Name: JENNIFER NORTON	Position/Title: RESL (T)	Signature:
ICS 203	IAP Page	Date/Time: 08/31/2023 1331	<i>Jennifer Norton</i>

Fire Weather Forecast

FORECAST NO: 2

NAME OF FIRE: Dinner, Grizzly, Brice Creek Fires

FORECAST FOR: Fri, Sep 1, 2023 Day Shift

UNIT: OR-UPF-000357

FORECAST ISSUED: Thu Aug 31, 2023, 1800 PDT

SIGNED: Bob Tobin - IMET

WEATHER DISCUSSION: An upper-level low will set up off the NorCal coast on Friday and stay there through early Sunday. Moisture will wrap around the low and up through southwest Oregon through Sunday. This will keep cooler temperatures and the chance for showers and possible thunderstorms in the forecast through the weekend. A weaker disturbance will move through the region on Monday for a continuation of the cooler wetter weather. Conditions will warm up a little and dry out the remainder of the week...with temperatures at or just below normal.

TODAY: Cloudy. A chance of showers and a slight chance of afternoon thunderstorms.

Max Temperature(°F): (Valleys) 62-66 (5-7 Warmer) **Min RH: (Valleys)** 65-75% (Down 4-8%)
(Ridges) 55-60 (5-7 Warmer) **(Ridges)** 70-80% (Down 5-10%)

20 FT Winds:

Valleys and Slopes: Variable 2-4 mph early...becoming Upslope 3-5 mph after 1100.

Ridgetops: NW-NE 5-10 mph.

CWR (0.25"+): 40% **Inversion Break/Mixing Heights:** 1000/2800 ft. **LAL: 2** **Haines: 2 (Very Low)**

TONIGHT: A chance of showers through midnight...then partial clearing. A slight chance of thunderstorms through sunset.

Min Temperature (°F):

Valleys 50-55

Ridgetops 45-55

Max RH:

Valleys 85-100%

Ridgetops 85-95%

20 FT Winds:

Slope/Valleys: Downslope/drainage 3-5 mph after 2000.

Ridgetops: Becoming ESE 3-6 mph after 2200.

CWR (0.25"+): 15% **LAL:** 2 through sunset...then 1. **INVERSION:** Weak inversion after 2000.

EXTENDED OUTLOOK:

Saturday... Showers through the day. A slight chance of thunderstorms late in the afternoon. Highs 60-75. Relative humidity 45-55% Winds: SWW 5-10 mph. Haines: 3. LAL: 2.

Sunday and Monday... Mostly cloudy. A chance of showers. Highs 60-70. Humidity: 45-55% WNW 8-12 mph.

PLEASE submit your weather observations to the IMET.

Snap a picture of your observations and text them to: (509) 844-7003

FIRE BEHAVIOR FORECAST

FORECAST NUMBER: 2	TYPE OF FIRE: Wildfire
FIRE NAME: Dinner, Grizzly, and Brice Creek	OPERATIONAL PERIOD: 0700-1900 September 1, 2023
DATE ISSUED: August 31, 2023	TIME ISSUED: 2000 Hours
UNIT: Umpqua National Forest	SIGNED: Don Strand – FBAN, Bryan Gaines FBAN (t)

INPUTS

WEATHER SUMMARY: See Fire Weather Forecast for Details

Cooler temperatures and the chance for showers and possible thunderstorms in the forecast through the weekend.

FUELS:

Fuels in the fire area are primarily composed of *Timber Litter*, and *Timber Understory with moss/lichen present in most stands*. Mature conifer stands with western hemlock and Douglas fir present, generally have heavy surface fuel loading. 30 to 50+ year old second growth conifer stands contain needle litter and some down woody debris. Brush and reproduction present in areas with less dense canopies. Brush and understory species include huckleberry, ocean spray, vine maple, ceanothus, and manzanita.

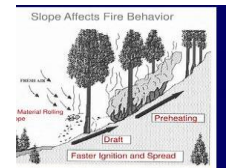
Today's Forecast ERC= 51st percentile 100-hr fuel moisture 18% 1000-hr fuel moisture 17%

FIRE BEHAVIOR GENERAL:



With yesterday's moisture and expected additional moisture over the fire area today minimal fire behavior is expected with little to no perimeter growth.

Fuel Model	ROS (Ft/Min)			Flame Length (feet)		
	Head	Flanking	Backing	Head	Flanking	Backing
TU5 – Understory	0.0	0.0	0.0	0.0	0.0	0.0
TL4 – Timber Litter	0.0	0.0	0.0	0.0	0.0	0.0
TU4 - Timber Litter	0.0	0.0	0.0	0.0	0.0	0.0



PIG- mostly shaded- 12% Spotting Unlikely Torching Possible Unlikely Crown Runs Unlikely

(Fire behavior predictions are for the hottest and driest period of the day; Wind slope alignment gusts could increase fire behavior rates.)

FIRE BEHAVIOR SPECIFIC:

Dinner, Grizzly, and Brice Creek Fires: With yesterday's moisture and today's forecast for additional moisture, minimal fire activity is expected with little to no perimeter growth. Areas of heavy dead and downed fuels will continue to consume along with ground fire in the duff. Burning standing dead trees will continue to burn creating aerial hazard. The moistened soil will increase the chance of burning rolling debris carrying fire across containment lines. Even though these spot fires may not grow with the high fuel moistures there is a possibility they may when conditions return to a drying trend.

Initial Attack: In the event resources respond to a new start, recognize that fuels and topography may be different than areas you have previously worked in. Update your situational awareness to any new location or task.

AIR OPERATIONS:

Low clouds and fog may prohibit air operations over the fires.

Safety

“Make safety a habit. Instead of letting complacency take over, practice the safe way over and over until the safest process is the one you do every time.” Unknown author



SAFETY MESSAGE

1 September 2023

INCIDENT: DINNER/ GRIZZLY/BRICE CREEK

OPERATIONAL PERIOD: 0700-1900

TOPICS:



Driving may be one of the most taken for granted activities we engage in. Traffic accidents are rapidly becoming one of the top causes for firefighter injuries and fatalities. Use ALL safety equipment; wear your seat belts; frequently check your mirrors; keep lights on; and always use a spotter in all circumstances with blind spots. Practice good road SA. Anticipate vehicles on blind curves; maintain proper speed for conditions especially wet roads; look where you want to go, not where you are. Mark known driving hazards; communicate turn-around sites; and manage the flow of traffic. If in doubt, SLOW DOWN. Leave the cell phone in your pocket and avoid other items/activities that compete for your attention.

EXTRACTION

Review extraction routes and methods. Identify equipment on hand and needed to facilitate extraction over rough terrain. Recognize precautions that need to be taken for different types of injuries. Review your options for transport while keeping the “Golden Hour” as your objective. Close the window between triage and arrival at definitive care.

Don't ever create a plan that is so complex that you can't explain it to those that have to carry it out.

BEWARE OF MINESHAFTS: SEE RESOURCE ADVISOR MESSAGE!

SAFETY OFFICERS: Jack Cates, Troy Corn

Deliberate Risk Assessment-Hazard Summary

1 SEPT 2023

Hazard	Mitigation	Post Risk
Extraction Time	Identify medivac sites and helispots. Initiate ground transport to accident site for transport capability. Identify EMT/EMTP from resources assigned to division. Provide line-qualified paramedics to each division as available. Review IWI protocol to ensure familiarity. Consider Short Haul if conditions dictate. Utilize agency and civilian medivac as treatment/timing dictates. Evaluate ongoing need for repositioning medical personnel. Provide dust abatement on Helispots as needed.	HIGH
Aircraft	Utilize Air Attack. Ensure all resources are a safe distance from all bucket and retardant drops. Establish LCES. Utilize air to ground primary for fixed wing and bucket work as needed. Reference IRPG (Safe aircraft operations pg. 61-62). Ensure IA resources have coordination with unassigned local air resources to provide deconfliction.	HIGH
Hazard Trees	Use avoidance to limit exposure time. Fall ahead to avoid exposure. Use qualified fallers or alternate methods if needed. Conduct ongoing risk analysis of all work areas. Follow Hazard Tree Safety Guidelines (IRPG page 20-21).	HIGH
Heavy Equipment	Post lookouts around equipment work areas. Establish communications with equipment boss and operator. Do not work down-slope from equipment. Follow agency guidelines for chipping operations.	HIGH
Physical Factors	Maintain hydration schedule. Closely monitor work rate and implement rest periods. Maintain nutrition. Ensure adequate work/rest.	MODERATE
Fire Behavior/Weather	Be aware of burn windows and weather impacts and min/max RH for flashy fuels/local conditions. Report changes to FBAN and IMET. Establish MAP for disengagement to provide for an orderly retreat due to a lack of safety zones. Have a plan for disengagement that establishes a designated meeting point and maintains personnel accountability.	MODERATE
Steep Terrain/Gravity	Establish LCES. Do not work crews above or below each other. Post lookouts for rolling material. Watch footing in loose soil, rock and around vegetation. Do not work below heavy equipment. Scout and identify travel routes.	MODERATE
Transportation	Sign all incident roads that provide access to divisions. Provide daily updated travel plan maps. Practice defensive driving. In local communities obey the posted speed limits and follow school zone restrictions. Use reader boards to provide advanced warning and control entry to base camp as needed. Identify and evaluate contingency and alternate escape and travel routes. Provide dust abatement and grading as needed. Provide advanced scouting for transport access and bridge weight restrictions. Maintain awareness of logging haul routes.	MODERATE
Unburned Fuels/Firing Ops	Maintain awareness fuel dryness levels. Establish LCES. Ensure management action points are implemented and followed. Weather updates as needed during burning operations. Locate indirect firelines to minimize unburned fuels. Follow Interagency Ignition Guide. Ensure communications between all firing operations. Establish road security at all firing sites. Follow approved firing plan for unburned fuels. If utilizing aerial ignitions make sure firing plan is in place and communicated to all resources and understood. Utilize separate Air to Ground for operation as appropriate.	MODERATE
Environmental Factors	Assign medical personnel to camp. Assess for known allergies and report to medical personnel. Obtain Bee Bopper/wasp spray and yellow jacket traps. Maintain an awareness of wildlife and poison oak. Identify and report allergies to your chain of command. Work with READs and GISS to evaluate and identify mineshafts. Provide visqueen for rainfall protection.	MODERATE
Structure Protection	Review structure protection plan and ground truth whether defensible. Identify and report compromised service poles and maintain one span avoidance area. Identify downed lines. Treat all powerlines as live. Identify and avoid vehicles, tires, propane tanks, gas tanks and heavy fuels concentrations.	MODERATE
Communication	Evaluate dead zones prior to engagement. Utilize human repeaters as needed. Ensure accountability of resources in problem areas. Spiking resources must have communication coverage.	LOW
Viral Transmission Mitigations, Communicable Disease	Maintain awareness of health and perform self-checks. Report and isolate if not feeling well. Use remote briefings, spike camps and logistical layouts that provide for social-distancing as necessary. Establish liaison with Lane County Public Health.	LOW
Public Interaction	Implement area and road closures as necessary. Maintain a lookout for hunters in and out of closure areas. Maintain awareness of evacuation areas and provide accurate information dissemination. Maintain awareness of hunters and holiday recreation.	LOW
Initial Attack	Ensure identified IA resources are briefed of expectations and ensure communication plan is provided. Ensure resources are briefed on IA command structure. Provide identified crews with area maps.	LOW

Division/Group Assignment List (ICS 204 WF)
Controlled Unclassified Information//Basic

1. Incident Name:			3.			
DINNER, GRIZZLY & BRICE CREEK FIRES			Branch:		Division/Group	
2. Operational Period: DAY			GRIZZLY		S	
Date/Time From: 09/01/2023 0700 FRI	Date/Time To: 09/01/2023 1900 FRI					
4. Operations Personnel						
OPERATIONS CHIEF		KURT RANTA CODY ACORD (T)		SAFETY OFFICERS		TROY CORN JACK CATES; TAIJA CORSO
BRANCH DIRECTOR		JEROMY WILSON		DIVISION/GROUP SUPERVISOR		CHRISTOPHER WHITE CHRIS RAMISKEY (T)
5. Resources Assigned this Period						
Strike Team / Task Force / Resource Designator	LWD	Leader	Number Persons	Drop Off PT./Time	Pick Up PT./Time	
O-1.84 SOFR		JEFF HIGENS	1	BAKER BAY/0700	SHARPS CREEK BASE CAMP/1900	
O-3 TFLD	09/08	BEN CLINE	1	BAKER BAY/0700	SHARPS CREEK BASE CAMP/1900	
O-15 TFLD	09/01	STEVE KENDALL	1	BAKER BAY/0700	SHARPS CREEK BASE CAMP/1900	
O-14 HEQB	09/08	JOSH BROCK	1	BAKER BAY/0700	SHARPS CREEK BASE CAMP/1900	
O- FELB			1	BAKER BAY/0700	SHARPS CREEK BASE CAMP/1900	
O- FELB			1	BAKER BAY/0700	SHARPS CREEK BASE CAMP/1900	
O-13 FMOD		CHARLES LYSTRUP	1	BAKER BAY/0700	SHARPS CREEK BASE CAMP/1900	
C-8 CRW1 PIONEER PEAK IHC			20	SHARPS CREEK BASE CAMP/0700	SHARPS CREEK BASE CAMP/1900	
C-1 CRW2 PACIFIC OASIS	09/10	JEFF ANDERSON	20	BAKER BAY/0700	SHARPS CREEK BASE CAMP/1900	
C-2 CRW2 TOM FERRY		FRANCISCO GARCIA	20	BAKER BAY/0700	SHARPS CREEK BASE CAMP/1900	
E-4 WTS2 PACIFIC RIDGELINE	09/12	BRANDON FERRIS	1	BAKER BAY/0700	SHARPS CREEK BASE CAMP/1900	
E-6 DOZ4 R & L		MIKE SMITH	1	BAKER BAY/0700	SHARPS CREEK BASE CAMP/1900	
O-82 REMS 10 - BEYOND THE EDGE REMS 10	09/14	JESSE BEAN	4	SHARPS CREEK BASE CAMP/0700	SHARPS CREEK BASE CAMP/1900	
8. Division/Group Communication Summary						
Function	Channel	RX Frequency N/W	RX Tone/NAC	TX Frequency N/W	TX Tone/NAC	Mode
TACTICAL	4	166.7250	100.0	166.7250	100.0	A
COMMAND	7	170.0625	100.0	162.4375	100.0	A
AIR TO GROUND	13	165.9875		165.9875		A
AIR TO GROUND	14	173.5000		173.5000		A
9. Prepared By (Resource Unit Leader)			Approved By (Planning Section Chief)		Date	Time
MARGE HUTCHINSON			JILL JOHNSON		08/31/2023	2000

Division/Group Assignment List (ICS 204 WF)

Controlled Unclassified Information//Basic

1. Incident Name:			3.			
DINNER, GRIZZLY & BRICE CREEK FIRES			GRIZZLY	S		
2. Operational Period: DAY						
Date/Time From:	FRI	Date/Time To:	09/01/2023 1900	FRI		
4. Operations Personnel						
OPERATIONS CHIEF	KURT RANTA CODY ACORD (T)		SAFETY OFFICERS	TROY CORN JACK CATES; TAIJA CORSO		
BRANCH DIRECTOR	JEROMY WILSON		DIVISION/GROUP SUPERVISOR	CHRISTOPHER WHITE CHRIS RAMISKEY (T)		
5. Resources Assigned this Period						
Strike Team / Task Force / Resource Designator	LWD	Leader	Number Persons	Drop Off PT./Time	Pick Up PT./Time	
6. Control Operations/Work Assignments:						
<p>TASK: Construct direct and indirect fireline and secure perimeter. PURPOSE: Prevent fire from impacting values at risk, including historic mining community and infrastructure, timberlands, T & E habitat, and communities to the West. END STATE: Fire is kept W of the 2214 Road, north of Grizzly Mtn, east of the 2473 Road, and south of Jumbo Creek, to protect the values at risk through the remainder of the fire season.</p>						
7. Special Instructions:						
For this DIV - add GRIZZLY FIRE to all CTRs & Shift tickets						
8. Division/Group Communication Summary						
Function	Channel	RX Frequency N/W	RX Tone/NAC	TX Frequency N/W	TX Tone/NAC	Mode
TACTICAL	4	166.7250	100.0	166.7250	100.0	A
COMMAND	7	170.0625	100.0	162.4375	100.0	A
AIR TO GROUND	13	165.9875		165.9875		A
AIR TO GROUND	14	173.5000		173.5000		A
9. Prepared By (Resource Unit Leader)		Approved By (Planning Section Chief)		Date	Time	
MARGE HUTCHINSON		JILL JOHNSON		08/31/2023	2000	

Division/Group Assignment List (ICS 204 WF)
Controlled Unclassified Information//Basic

1. Incident Name:				3.		
DINNER, GRIZZLY & BRICE CREEK FIRES				Branch: GRIZZLY	Division/Group Z	
2. Operational Period: DAY						
Date/Time From: 09/01/2023 0700 FRI		Date/Time To: 09/01/2023 1900 FRI				
4. Operations Personnel						
OPERATIONS CHIEF		KURT RANTA CODY ACORD (T)		SAFETY OFFICERS		TROY CORN JACK CATES; TAIJA CORSO
BRANCH DIRECTOR		JEROMY WILSON		DIVISION/GROUP SUPERVISOR		JAMES DICKINSON; BOB HINDS PAT CHISM (T)
5. Resources Assigned this Period						
Strike Team / Task Force / Resource Designator		LWD	Leader	Number Persons	Drop Off PT./Time	Pick Up PT./Time
O-36 SOF2		09/13	RICHARD M MCCONNELL	1	BAKER BAY/0700	SHARPS CREEK BASE CAMP/1900
O-4 TFLD			KYLE HEFLIN	1	BAKER BAY/0700	SHARPS CREEK BASE CAMP/1900
C-3 CRW2 AFS		09/08	NOE FRANCO	20	BAKER BAY/0700	SHARPS CREEK BASE CAMP/1900
C-6 CRW2 TOM FERRY		09/09	MEZDRAIN AMARAL	10	BAKER BAY/0700	SHARPS CREEK BASE CAMP/1900
E-10 AMBU 1 - BEST PRACTICES		09/05	BRODY BOHRER	2	BAKER BAY/0700	SHARPS CREEK BASE CAMP/1900
O- REAF			CHASE BOLYARD	1	SHARPS CREEK BASE CAMP/0700	SHARPS CREEK BASE CAMP/1900
6. Control Operations/Work Assignments:						
<p>TASK: Construct direct and indirect fireline and secure perimeter. PURPOSE: Prevent fire from impacting values at risk, including historic mining community and infrastructure, timberlands, T & E habitat, and communities to the West. END STATE: Fire is kept W of the 2214 Road, north of Grizzly Mtn, east of the 2473 Road, and south of Jumbo Creek, to protect the values at risk through the remainder of the fire season.</p>						
7. Special Instructions:						
For this DIV - add GRIZZLY FIRE to all CTRs & Shift tickets						
8. Division/Group Communication Summary						
Function	Channel	RX Frequency N/W	RX Tone/NAC	TX Frequency N/W	TX Tone/NAC	Mode
TACTICAL	5	166.7750	100.0	166.7750	100.0	A
COMMAND	7	170.0625	100.0	162.4375	100.0	A
AIR TO GROUND	13	165.9875		165.9875		A
AIR TO GROUND	14	173.5000		173.5000		A
9. Prepared By (Resource Unit Leader)			Approved By (Planning Section Chief)		Date	Time
MARGE HUTCHINSON			JILL JOHNSON		08/31/2023	2000

Division/Group Assignment List (ICS 204 WF)
Controlled Unclassified Information//Basic

1. Incident Name:			3.			
DINNER, GRIZZLY & BRICE CREEK FIRES			Branch:		Division/Group	
2. Operational Period: DAY			GRIZZLY		STRUCTURE	
Date/Time From: 09/01/2023 0700 FRI	Date/Time To: 09/01/2023 1900 FRI					
4. Operations Personnel						
OPERATIONS CHIEF		KURT RANTA CODY ACORD (T)		SAFETY OFFICERS		TROY CORN JACK CATES; TAIJA CORSO
BRANCH DIRECTOR		JEROMY WILSON		DIVISION/GROUP SUPERVISOR		MILES POLLACK CRIS MACHADO (T)
5. Resources Assigned this Period						
Strike Team / Task Force / Resource Designator	LWD	Leader	Number Persons	Drop Off PT./Time	Pick Up PT./Time	
O-1 TFLD	09/08	JUSTIN WHITE	1	SHARPS CREEK BASE CAMP/0700	SHARPS CREEK BASE CAMP/1900	
C-10002 CRW2 R&R CONTRACTING	09/14	ISMAEL RANGEL	20	SHARPS CREEK BASE CAMP/0700	SHARPS CREEK BASE CAMP/1900	
C-10003 CRW2 GFP ENTERPRISES	09/13	LUIS FIGUERAS	20	SHARPS CREEK BASE CAMP/0700	SHARPS CREEK BASE CAMP/1900	
E-40 ENG4 HI COUNTRY E41	09/14	MASON PANFIGLIO	3	SHARPS CREEK BASE CAMP/0700	SHARPS CREEK BASE CAMP/1900	
6. Control Operations/Work Assignments:						
<p>TASK: Provide structure protection assessment, planning, and preparation. PURPOSE: Minimize fire impacts to private residences and historic structures in the fire area. END STATE: Area to be protected is prepped and secured, including trigger points identified to implement any additional measures.</p>						
7. Special Instructions:						
For this DIV - add GRIZZLY FIRE to all CTRs & Shift tickets						
8. Division/Group Communication Summary						
Function	Channel	RX Frequency N/W	RX Tone/NAC	TX Frequency N/W	TX Tone/NAC	Mode
TACTICAL	6	168.2500	100.0	168.2500	100.0	A
COMMAND	7	170.0625	100.0	162.4375	100.0	A
AIR TO GROUND	13	165.9875		165.9875		A
AIR TO GROUND	14	173.5000		173.5000		A
9. Prepared By (Resource Unit Leader)			Approved By (Planning Section Chief)		Date	Time
MARGE HUTCHINSON			JILL JOHNSON		08/31/2023	2000

Division/Group Assignment List (ICS 204 WF)
Controlled Unclassified Information//Basic

1. Incident Name:			3.			
DINNER, GRIZZLY & BRICE CREEK FIRES			Branch:		Division/Group	
2. Operational Period: DAY					A	
Date/Time From: 09/01/2023 0700 FRI	Date/Time To: 09/01/2023 1900 FRI					
4. Operations Personnel						
OPERATIONS CHIEF		KURT RANTA CODY ACORD (T)		SAFETY OFFICERS		TROY CORN JACK CATES; TAIJA CORSO
BRANCH DIRECTOR				DIVISION/GROUP SUPERVISOR		KEN FOSS NICK WIGLE, (T)
5. Resources Assigned this Period						
Strike Team / Task Force / Resource Designator	LWD	Leader	Number Persons	Drop Off PT./Time	Pick Up PT./Time	
O-1.32 SOF2	09/12	PAUL BRNA	1	SHARPS CREEK BASE CAMP/0700	SHARPS CREEK BASE CAMP/1900	
C-1 CRW2 NORTH REFORESTATION CREW -2	09/01	JOSE RINCON	20	SHARPS CREEK BASE CAMP/0700	SHARPS CREEK BASE CAMP/1900	
C-2 T2IA GREYBACK 13A	09/09	RONALD WOOD	20	SHARPS CREEK BASE CAMP/0700	SHARPS CREEK BASE CAMP/1900	
C- T2IA TETON	09/11	CLEA BERTHOLET	22	SHARPS CREEK BASE CAMP/0700	SHARPS CREEK BASE CAMP/1900	
E- ENG6 UMITILLA				SHARPS CREEK BASE CAMP/0700	SHARPS CREEK BASE CAMP/1900	
E-5 ENG4 DIAMOND	09/02	DEAN WILSON	3	SHARPS CREEK BASE CAMP/0700	SHARPS CREEK BASE CAMP/1900	
E-10 ENG6 E658	09/09	CLAY GOBLEMANN	3	SHARPS CREEK BASE CAMP/0700	SHARPS CREEK BASE CAMP/1900	
E-9 WTS1 IRELAND	09/12	ADAM FRAISER	1	SHARPS CREEK BASE CAMP/0700	SHARPS CREEK BASE CAMP/1900	
E-45 WTS2 WARREN PARTRIDGE	09/14	DARYL STUBBLEFIELD	1	SHARPS CREEK BASE CAMP/0700	SHARPS CREEK BASE CAMP/1900	
6. Control Operations/Work Assignments:						
<p>TASK: Construct direct and indirect fireline and secure perimeter. PURPOSE: Prevent fire from impacting values at risk, including timberlands, T & E habitat, and communities to the West. END STATE: Fire is kept north of the 22 Road, south of the 2216 Road, and east of 732 Road, to protect the values at risk through the remainder of the fire season.</p>						
7. Special Instructions:						
For this DIV - add BRICE CREEK FIRE to all CTRs & Shift tickets						
8. Division/Group Communication Summary						
Function	Channel	RX Frequency N/W	RX Tone/NAC	TX Frequency N/W	TX Tone/NAC	Mode
TACTICAL	1	168.0500	100.0	168.0500	100.0	A
COMMAND	7	170.0625	100.0	162.4375	100.0	A
AIR TO GROUND	13	165.9875		165.9875		A
AIR TO GROUND	14	173.5000		173.5000		A
9. Prepared By (Resource Unit Leader)			Approved By (Planning Section Chief)		Date	Time
MARGE HUTCHINSON			JILL JOHNSON		08/31/2023	2000

Division/Group Assignment List (ICS 204 WF)
Controlled Unclassified Information//Basic

1. Incident Name:				3.		
DINNER, GRIZZLY & BRICE CREEK FIRES				Branch:	Division/Group C	
2. Operational Period: DAY						
Date/Time From: 09/01/2023 0700 FRI		Date/Time To: 09/01/2023 1900 FRI				
4. Operations Personnel						
OPERATIONS CHIEF		KURT RANTA CODY ACORD (T)		SAFETY OFFICERS		TROY CORN JACK CATES; TAIJA CORSO
BRANCH DIRECTOR				DIVISION/GROUP SUPERVISOR		IAN MCCORD JOHN ELLIS (T)
5. Resources Assigned this Period						
Strike Team / Task Force / Resource Designator	LWD	Leader	Number Persons	Drop Off PT./Time	Pick Up PT./Time	
O-1.32 SOF2	09/12	PAUL BRNA	1	SHARPS CREEK BASE CAMP/0700	SHARPS CREEK BASE CAMP/1900	
O-2 FMOD	09/10	MARTIN PICKLE	2	SHARPS CREEK BASE CAMP/0700	SHARPS CREEK BASE CAMP/1900	
O-45 FELB	09/10	BEN JONGEWARD	1	SHARPS CREEK BASE CAMP/0700	SHARPS CREEK BASE CAMP/1900	
C-9 CRW1 - PRESCOTT IHC	09/10	DARIN FISHER	20	SHARPS CREEK BASE CAMP/0700	SHARPS CREEK BASE CAMP/1900	
C-12 CRW1 - SILVER STATE IHC		KEVIN KELLY	22	SHARPS CREEK BASE CAMP/0700	SHARPS CREEK BASE CAMP/1900	
C-5 CRW2 T2C224 STEELHEAD CREW-1	09/10	PEDRO WRIGHT	20	SHARPS CREEK BASE CAMP/0700	SHARPS CREEK BASE CAMP/1900	
C-8 CRW2 WEST COAST REFOREST CREW -1	09/11	HOMER HERNANDEZ	20	SHARPS CREEK BASE CAMP/0700	SHARPS CREEK BASE CAMP/1900	
C-13 T2IA GREYBACK 13B	09/09	CAMDEN RHIEINHART	20	SHARPS CREEK BASE CAMP/0700	SHARPS CREEK BASE CAMP/1900	
E- ENG6 FWF ENG 654	09/05	MIKE GRAHAM	4	SHARPS CREEK BASE CAMP/0700	SHARPS CREEK BASE CAMP/1900	
E-41 ENG4 METHOW RIVER WILD FIRE				SHARPS CREEK BASE CAMP/0700	SHARPS CREEK BASE CAMP/1900	
E-2 WTS2 RHXDEM	09/10	RUSSEL ROBISON	1	SHARPS CREEK BASE CAMP/0700	SHARPS CREEK BASE CAMP/1900	
6. Control Operations/Work Assignments:						
<p>TASK: Construct direct and indirect fireline and secure perimeter. PURPOSE: Prevent fire from impacting values at risk, including timberlands, T & E habitat, and communities to the West. END STATE: Fire is kept north of the 22 Road, south of the 2216 Road, and east of 732 Road, to protect the values at risk through the remainder of the fire season.</p>						
7. Special Instructions:						
For this DIV - add BRICE CREEK FIRE to all CTRs & Shift tickets						
8. Division/Group Communication Summary						
Function	Channel	RX Frequency N/W	RX Tone/NAC	TX Frequency N/W	TX Tone/NAC	Mode
TACTICAL	2	168.2000	100.0	168.2000	100.0	A
COMMAND	7	170.0625	100.0	162.4375	100.0	A
AIR TO GROUND	13	165.9875		165.9875		A
AIR TO GROUND	14	173.5000		173.5000		A
9. Prepared By (Resource Unit Leader)			Approved By (Planning Section Chief)		Date	Time
MARGE HUTCHINSON			JILL JOHNSON		08/31/2023	2000

Division/Group Assignment List (ICS 204 WF)
Controlled Unclassified Information//Basic

1. Incident Name:				3.		
DINNER, GRIZZLY & BRICE CREEK FIRES				Branch:	Division/Group D	
2. Operational Period: DAY						
Date/Time From: 09/01/2023 0700 FRI		Date/Time To: 09/01/2023 1900 FRI				
4. Operations Personnel						
OPERATIONS CHIEF		KURT RANTA CODY ACORD (T)		BRANCH DIRECTOR		
SAFETY OFFICERS		TROY CORN JACK CATES; TAIJA CORSO		DIVISION/GROUP SUPERVISOR		JEREMIAH COKE CARSON ZEPP (T)
5. Resources Assigned this Period						
Strike Team / Task Force / Resource Designator	LWD	Leader	Number Persons	Drop Off PT./Time	Pick Up PT./Time	
O-1.32 SOF2	09/12	PAUL BRNA	1	SHARPS CREEK BASE CAMP/0700	SHARPS CREEK BASE CAMP/1900	
O-1 FMOD	09/10	BRYER ZIMMERMAN	2	SHARPS CREEK BASE CAMP/0700	SHARPS CREEK BASE CAMP/1900	
O-1 FMOD A AND C CUTTING	09/09	ELIJAH	2	SHARPS CREEK BASE CAMP/0700	SHARPS CREEK BASE CAMP/1900	
O-21 FMOD TIMBER TIPPERS	08/12	ZELLER	2	SHARPS CREEK BASE CAMP/0700	SHARPS CREEK BASE CAMP/1900	
C-7 CRW1 BITTERROOT IHC	09/10	CACHE V GIBBONS	22	SHARPS CREEK BASE CAMP/0700	SHARPS CREEK BASE CAMP/1900	
C-1 T2IA ALTA PACIFIC	09/12	LEO TORRES	20	SHARPS CREEK BASE CAMP/0700	SHARPS CREEK BASE CAMP/1900	
C-1 CRW2 LAVA RIVER			20	SHARPS CREEK BASE CAMP/0700	SHARPS CREEK BASE CAMP/1900	
C-4 T2IA LAVA RIVER FORESTRY CREW - 5	09/12	JESUS RUIZ	20	SHARPS CREEK BASE CAMP/0700	SHARPS CREEK BASE CAMP/1900	
C-5 T2IA LOST RIVER	09/09	AARON VASILIS	20	SHARPS CREEK BASE CAMP/0700	SHARPS CREEK BASE CAMP/1900	
C- T2IA UPF CREW	09/08	VINCENT MARTINO	20	SHARPS CREEK BASE CAMP/0700	SHARPS CREEK BASE CAMP/1900	
E-42 ENG4 ENG4 - METHOW RIVER WILD FIRE				SHARPS CREEK BASE CAMP/0700	SHARPS CREEK BASE CAMP/1900	
E-3 WTS2 ALLIEID WATERS		MATT WAXLER	1	SHARPS CREEK BASE CAMP/0700	SHARPS CREEK BASE CAMP/1900	
E-1 DZR4 SUTPHIN TRUCKING	09/10	LEVI SUTPHIN	2	SHARPS CREEK BASE CAMP/0700	SHARPS CREEK BASE CAMP/1900	
E-3 DOZ2 HYDROCAT	09/13	MARK RICTOR	2	SHARPS CREEK BASE CAMP/0700	SHARPS CREEK BASE CAMP/1900	
E-3 AMBU 2 TRI COUNTY AMBULANCE SERVICE		ZACH	2	SHARPS CREEK BASE CAMP/0700	SHARPS CREEK BASE CAMP/1900	
O- REAF		CHASE STREET	1	SHARPS CREEK BASE CAMP/0700	SHARPS CREEK BASE CAMP/1900	
8. Division/Group Communication Summary						
Function	Channel	RX Frequency N/W	RX Tone/NAC	TX Frequency N/W	TX Tone/NAC	Mode
TACTICAL	3	168.6000	100.0	168.6000	100.0	A
COMMAND	7	170.0625	100.0	162.4375	100.0	A
AIR TO GROUND	13	165.9875		165.9875		A
AIR TO GROUND	14	173.5000		173.5000		A
9. Prepared By (Resource Unit Leader)		Approved By (Planning Section Chief)		Date	Time	
MARGE HUTCHINSON		JILL JOHNSON		08/31/2023	2000	

Division/Group Assignment List (ICS 204 WF)

Controlled Unclassified Information//Basic

1. Incident Name:			3.			
DINNER, GRIZZLY & BRICE CREEK FIRES			Branch:		Division/Group	
2. Operational Period: DAY						
Date/Time From: 09/01/2023 0700 FRI		Date/Time To: 09/01/2023 1900 FRI		D		
4. Operations Personnel						
OPERATIONS CHIEF		KURT RANTA CODY ACORD (T)		BRANCH DIRECTOR		
SAFETY OFFICERS		TROY CORN JACK CATES; TAIJA CORSO		DIVISION/GROUP SUPERVISOR		
				JEREMIAH COKE CARSON ZEPP (T)		
5. Resources Assigned this Period						
Strike Team / Task Force / Resource Designator		LWD	Leader	Number Persons	Drop Off PT./Time	Pick Up PT./Time
6. Control Operations/Work Assignments:						
<p>TASK: Construct direct and indirect fireline and secure perimeter. PURPOSE: Prevent fire from impacting values at risk, including timberlands, T & E habitat, and communities to the West. END STATE: Fire is kept north of the 1745 Rd and south of the 1746 road to protect the values at risk through the remainder of the fire season.</p>						
7. Special Instructions:						
<p>For this DIV - add DINNER FIRE to all CTRs & Shift tickets</p> <p>Chloeta Insurance Contract Engine will be doing structure protection / prep in the area of Row River Road / Brice Creek Road at the following 5 residences: 39440 & 39618 Row River Road / 39910, 40186, & 40297 Brice Creek Rd. Lead is JR Olson at 509-668-6437. Resource will attend morning Briefings and check in with divisions when entering fire area.</p>						
8. Division/Group Communication Summary						
Function	Channel	RX Frequency N/W	RX Tone/NAC	TX Frequency N/W	TX Tone/NAC	Mode
TACTICAL	3	168.6000	100.0	168.6000	100.0	A
COMMAND	7	170.0625	100.0	162.4375	100.0	A
AIR TO GROUND	13	165.9875		165.9875		A
AIR TO GROUND	14	173.5000		173.5000		A
9. Prepared By (Resource Unit Leader)			Approved By (Planning Section Chief)		Date	Time
MARGE HUTCHINSON			JILL JOHNSON		08/31/2023	2000

AIR OPERATIONS SUMMARY 220		Prepared/Approved: Paul Balfour	Prepared: 8/31/2023	Prepared Time: 1800 hrs.		
1. INCIDENT NAME: DINNER/GRIZZLY/BRICE CREEK		2. OPERATIONAL PERIOD 09/01/2023	START TIME: 0700	END TIME: 1900	SUNRISE: 0635	SUNSET: 1948

3. REMARKS (Safety Notes, Hazards, Air Operations Special Equipment, etc.). WATCH OUTS Smoky conditions * Steep terrain * Shadow effects Avoid foam within 300' of waterways or bodies of water. Notify the AOBD if not achieved. Aircraft costs daily to: bal4@pauljbalfour.com		4. READY ALERT AIRCRAFT: N38HX Shorthaul @ Sunriver ORNG Medivac: Roseburg Order through RICC See Medical Plan, last page of IAP	5.TFR: #3/2352 (A-2) Freq 121.3750 Operational 1500-0400 UTC
----------------------------------------------------------------------------------------------------------------------------------------------------------------------------------------------------------------------------------------------------------------------------------------------------------------	--	-----------------------------------------------------------------------------------------------------------------------------------------------------	---------------------------------------------------------------------------

6. PERSONNEL			7. FREQUENCIES			8. FIXED-WING Avail/ Type/ Make-Model/ N#/ Base
NAME	PHONE #		AM	FM		
Helibase			A/A TFR and Primary	121.3750	AIRTANKERS: ORDER THRU ATGS ATGS – order through Roseburg Dispatch Landing Sites on Fire: See pilot map Lying Cr Helispot: 43°42.698'N X 122°42.114'W 1224ft Cottage Grove: 43°48.246'N X 123°1.923'W 641ft Tank Dips	
			A/A Secondary (A-1)	127.0750		
AOBD	Paul Balfour	509-993-8739	A/A Tertiary (A-3)	123.9250		
ASGS			A/G Primary (A-4)	165.9875		
ASGS(t)			A/G Secondary (A-5)	173.5000		
ATGS			Deck (A-			
HEBM			TOLC (A-			
HEBM(t)						
ORRIC	Aircraft Desk	541-957-3325	IA A/G White ODF			
UAO	Jim Dotson	307-413-2024	IA A/G 49 USFS	168.0375		
Willy Acton UAO: 208-507-0942 73H Michael Wales 813-326-2469 9FF Joe Bradshaw 775-271-9284			VMED29	Rx/Tx 155.3475 rx/tx tn156.7		
			CTAF	122.8		
			Air Guard	168.6250 tx tn110.9		

FAA N#	T Y	MAKE/ MODEL	BASE	START	AVAIL	REMARKS	FAA N#	T Y	MAKE/ MODEL	BASE	START	AVAIL	REMARKS
N2773H (A14)	2	205 A1 ++	Cottage	0800	0900	4 personnel	N519FF (A-6)	3	AS 350	Cottage	0800	0900	6 personnel

INCIDENT RADIO COMMUNICATIONS PLAN (ICS 205)

Controlled Unclassified Information//Basic

1. Incident Name:	2. Date/Time Prepared:	3. Operational Period: DAY	
DINNER, GRIZZLY & BRICE CREEK FIRES	Date: 08/31/2023 Time: 1331	Date/Time From: 09/01/2023 0700 FRI	Date/Time To: 09/01/2023 1900 FRI

4. Basic Radio Channel Use:

Zone Group	Ch #	Function	Channel Name/Trunked Radio System Talkgroup	Assignment	RX Freq	RX Tone/NAC	TX Freq	TX Tone/NAC	Mode (A,D, or M)	Remarks
	1	TACTICAL	TAC 1	DIV A	168.0500	100.0	168.0500	100.0	A	BRICE FIRE
	2	TACTICAL	TAC 2	DIV C	168.2000	100.0	168.2000	100.0	A	BRICE FIRE
	3	TACTICAL	TAC 3	DIV D	168.6000	100.0	168.6000	100.0	A	DINNER FIRE
	4	TACTICAL	TAC 4	DIV S	166.7250	100.0	166.7250	100.0	A	GRIZZLY FIRE
	5	TACTICAL	TAC 5	DIV Z	166.7750	100.0	166.7750	100.0	A	GRIZZLY FIRE
	6	TACTICAL	TAC 6	STRUCTURE GROUP	168.2500	100.0	168.2500	100.0	A	GRIZZLY FIRE
	7	COMMAND	CMD 7	ALL DIVS	170.0625	100.0	162.4375	100.0	A	FAIRVIEW LO
	8	COMMAND	CMD 8	NONE	169.6125	100.0	162.5125	100.0	A	RESERVED-NOT IN SERVICE
	10	COMMAND	FAIRVIEW	IA LOCAL DISPATCH	170.5500	103.5	164.8000	173.8	A	ROSEBURG
	11	TACTICAL	OFD RED	IA ONLY	151.3400	156.7	151.3400	156.7	A	
	12	AIR TO GROUND	A/G 49	IA ONLY	168.0375		168.0375		A	
	13	AIR TO GROUND	A/G PRI	ALL FIRES	165.9875		165.9875		A	
	14	AIR TO GROUND	A/G SEC	ALL FIRES	173.5000		173.5000		A	
	15	AIR TO GROUND	VMED 29	MEDICAL EVAC ONLY	155.3475	156.7	155.3475	156.7	A	
	16	AIR GUARD	AIRGUARD	EMER AIR OPS ONLY	168.6250		168.6250	110.9	A	

5. Special Instructions:

6. Prepared By (Communications Unit Leader)	Name: MISSY PARKER,COML	Signature:
ICS 205	IAP Page	Date/Time: 08/31/2023 1331

Controlled Unclassified Information//Basic

RESOURCE ADVISOR MESSAGE



Cottage Grove has a rich mining history and many of these activities are still on the landscape. Adits (horizontal), shafts (vertical), and small pits can still be encountered in the forest. Although many of these have been closed or covered, there may be unknown mines out there. These features can contain poisonous air, deep pools of water, and the constant risk of cave-ins. If you come across any of these, stay out, flag the adjacent area, take GPS points, and bring to SITL so that the hazard can be shared. Avoid working in unknown ground at night when adits may not be readily visible.



Virtual Demob Instructions

DAY BEFORE YOUR DEMOB

Contact FINANCE 24 hours to advise departure, turn in any outstanding CTR/Shift Tickets. Make sure they are SIGNED. Confirm there are no missing financial documentation.

ANY OR ALL OF THE STEPS CAN BE COMPLETED THE NIGHT BEFORE TO SPEED UP THE DEMOB PROCESS

DAY OF DEMOB – STEP 1

Contact Demob at 509-432-6143 to determine your specific next steps since we are pre-clearing resources that do not have any supplies or communications equipment checked out. Honor you assigned Demob time as best as you can.

STEP 2 (When Set Up)

All line resources that went off-road must go through the weed wash (see IAP for locations) after your last shift. Weed wash station staff should give you a ticket after completion.

STEP 3 (If directed by Demob)

GROUND SUPPORT – Return incident rental vehicles; ALL contractors need inspection. SUPPLY – Return issued gear and leftover supplies.
COMMUNICATIONS – Return any communications equipment.
SITUATION UNIT – Return any issued I-Pad or GPS devices.

STEP 4

Proceed to FINANCE to complete closeout process, review/sign OF-288.

STEP 5

Proceed to CHECK-IN to turn in any Unit Logs or Evaluation documentation. Contact the Training Specialist if needed.

STEP 6

Once steps 1-6 are complete, finish the Demob process by calling 509-432-6143 with departure time, final destination and destination arrival time.

ALL AIR TRAVELERS

Submit your request 72 hours prior to flight date through the QR Code on the IAP Cover. Call 509-432-6143 for any questions or assistance.

NIGHT SHIFT PERSONNEL

All night shift personnel coming off the line will be required to meet work/rest requirements before starting the Demob process.

EXTENSIONS AND CREW SWAPS

All extension and crew swap processes should be done at least 48 hours before your last working day to help facilitate Operational resources and the Demob process.



Human Resource Message

September 1, 2023



Zero Tolerance for the Illegal Use of Non-prescription Drugs or Alcohol!

As a reminder to everyone working on this incident, we have zero tolerance for the illegal use of non-prescription drugs or alcohol. The use, sale, purchase, transfer, or possession of any illegal substances that cause impairment, or any legal, non-medically authorized substances that cause impairment, is strictly prohibited.

The safety of our workforce is the number one priority of this team and of our agency administrators. Please do not put yourself or others at risk. Always be fit for duty, take care of yourselves, and look out for each other.



If you have any questions related to your fire assignment, please reach out to me or any member of our team. We are here for your support.

Take Care and Be Aware! Have a Productive Day!

Contact Information - Human Resource Specialist: Susie Manezes
Cell Phone: 602-571-9327
Email: smanezes@blm.gov

Logistics Message

Dinner, Grizzly, Brice Creek Fires

Sharps Creek Base Camp

- **Supply Hours** 0600 to 2100 hours
 - All NFES orders are routed through supply. Direct General Messages to Supply or through Communications. Allow 24 to 48 hours for delivery due to the amount of activity in the state.
- **Ground Support** 0600 to 2100 hours
- **Shower Hours** 0430 to 1200 and 1500 to 2230 hours
- **Kitchen Hours** (Starting 9/1 for dinner service)
 - Breakfast 0500 to 0900
 - Dinner 1700 to 2200
- **Lunches and Ice** - available at the refer trailer.

Any meal deliveries to the line require a 24-hour notice.

Crews delayed returning back to camp will need a 4-hour notice to arrange meals.



Finance Message



Finance Email: 2023.dinner.finance@firenet.gov

SUBJECT: *Include Key Word **TIME** for Overhead, Crews & Cooperators*

SUBJECT: *Include Key Word **EQUIPMENT** for Contract Resources*

Temporary Finance Phone : 509-423-6011

FINANCE CHECK IN: 2023.dinner.finance@firenet.gov

PLEASE ENSURE THE DOCUMENTS LISTED BELOW ARE EMAILED

Overhead, Crews & Cooperator Resources	Contract Resources
<ul style="list-style-type: none"> • Check-In: Crew Manifest, Cooperative Agreement (if applies), AD Hire Letter, Resource Order • Daily: Crew Time Report (CTR), Shift Tickets • Demob: Signed OF288, Final Equipment Use Invoice (Cooperator). If you don't have a way to sign you must come to finance. 	<ul style="list-style-type: none"> • Check-In: Resource Order, Contract/VIPR Agreement (make sure you have your UEI, Pre-Inspection • Daily: Shift Tickets, receipts (fuel issues, claims, etc.) • Demob: Contractor Evaluations, Final Shift Tickets and receipt(s) for Addition/Deductions, Post-Inspection, Final Signed Invoices. If you don't have a way to sign you must come to finance.

REMINDERS

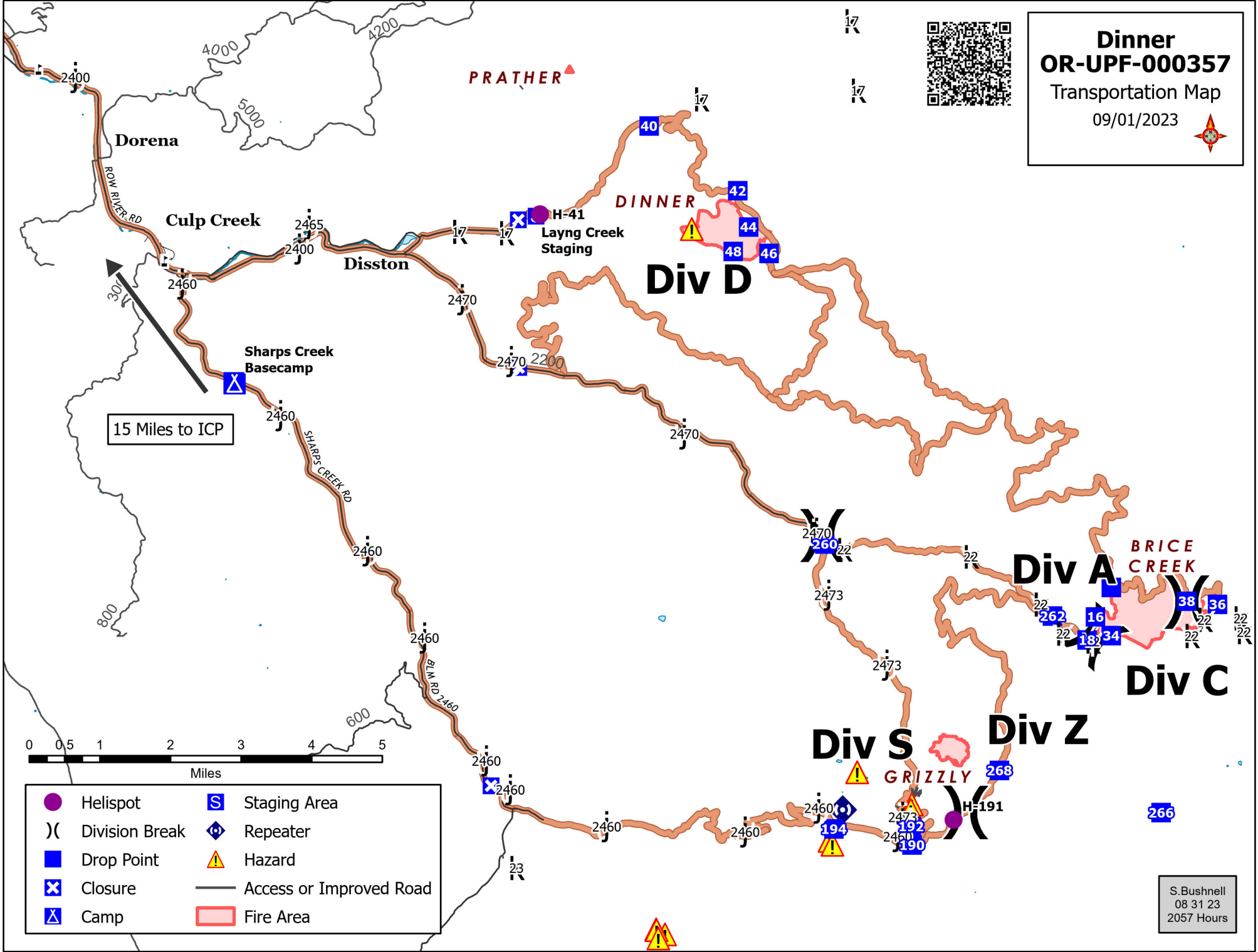
- ★ PLEASE ENSURE YOU INCLUDE LOCATION OF WHERE YOU ARE WORKING (DINNER, BRICE, GRIZZLY) ON THE CTR OR SHIFT TICKET. MAKE SURE O, C OR E # IS ON THE CTR OR SHIFT TICKET
- ★ PLEASE SHOW YOUR LUNCH BREAK
- ★ PLEASE USE MILITARY TIME (0001-2400)
- ★ WHEN CLAIMING HAZARD PAY YOU MUST INCLUDE THE SUPPRESSION ACTION BEING PERFORMED. THIS INCLUDES OPERATIONS WHICH DIRECTLY SUPPORT CONTROL OF FIRE (E.G., ACTIVITIES TO EXTINGUISH THE FIRE, FIREFIGHTING, GROUND SCOUTING, SPOT FIRE PATROLLING, SEARCH AND RESCUE OPERATIONS, AND BACKFIRING).



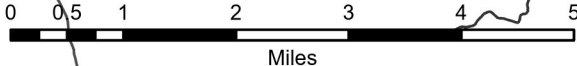
Dinner OR-UPF-000357

Transportation Map

09/01/2023



15 Miles to ICP



- | | | | |
|--|----------------|--|-------------------------|
| | Helispot | | Staging Area |
| | Division Break | | Repeater |
| | Drop Point | | Hazard |
| | Closure | | Access or Improved Road |
| | Camp | | Fire Area |

S. Bushnell
08 31 23
2057 Hours

Dinner OR-UPF-000357 IAP Map

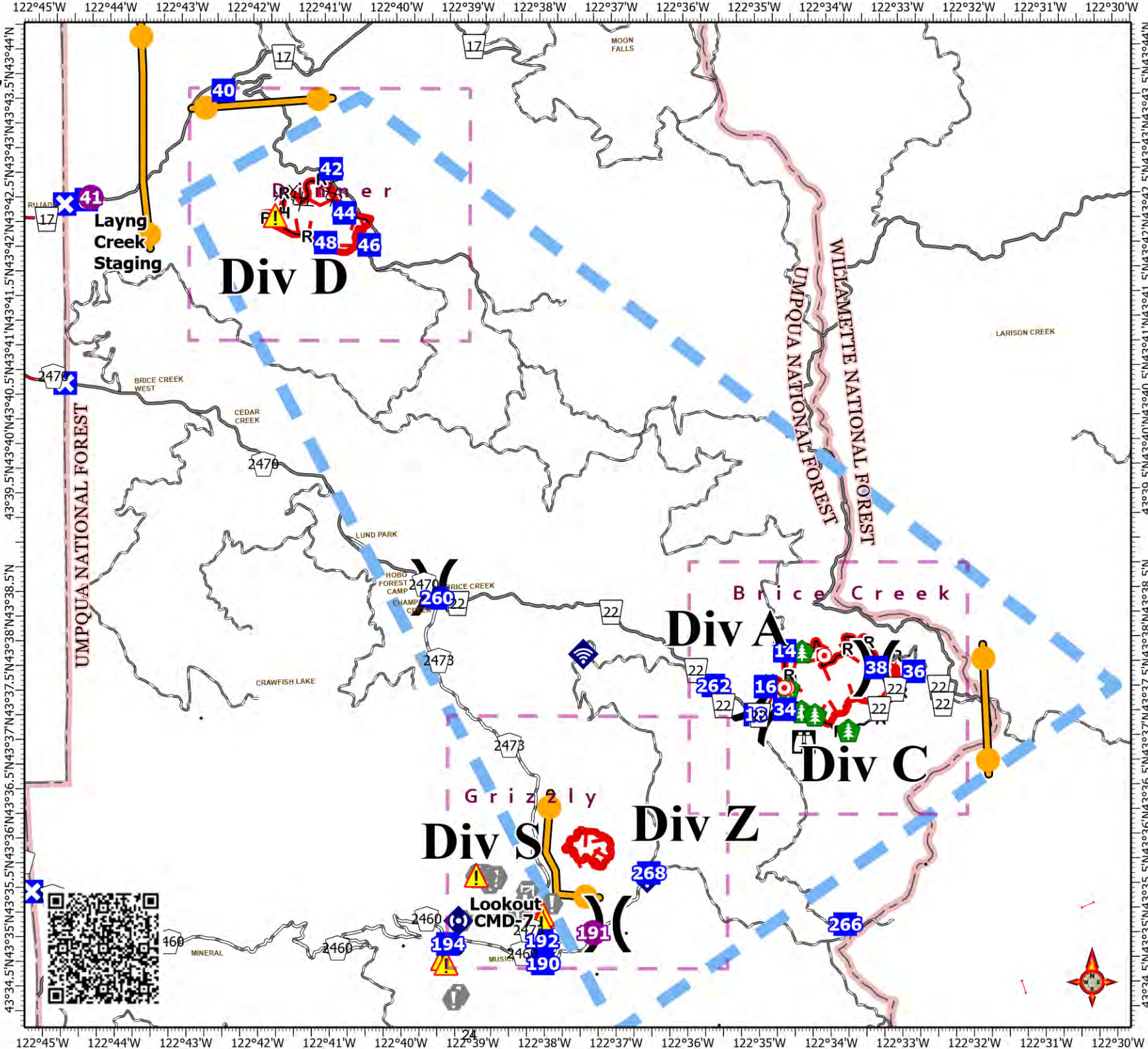
09/01/2023
acres at

- Helispot
- () Division Break
- Drop Point
- ⊗ Closure
- Ⓢ Staging Area
- 🏠 Lookout
- 🔥 Hot Spot - Spot Fire
- ⚠ Value at Risk
- 🚪 Gate
- 🌳 Hazard Tree
- 📶 Internet Access
- 📶 Repeater
- ⚠ Hazard
- ⊗ Completed Dozer Line
- H Completed Hand Line
- R Completed Road as Line
- Access or Improved Road
- Management Action Point
- Other
- 🚫 Temporary Flight Restriction
- 🔴 Uncontained Fire Edge
- 🛣 Highway
- Road - Light Duty - Dirt
- Road - Light Duty - Gravel
- Road - Light Duty - Paved



S. Bushnell
08 31 23
2056 Hours

Acres from IR and GPS
Datum: North American 1983

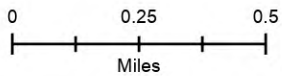


Brice Creek OR-UPF-000359 IAP Map

09/01/2023

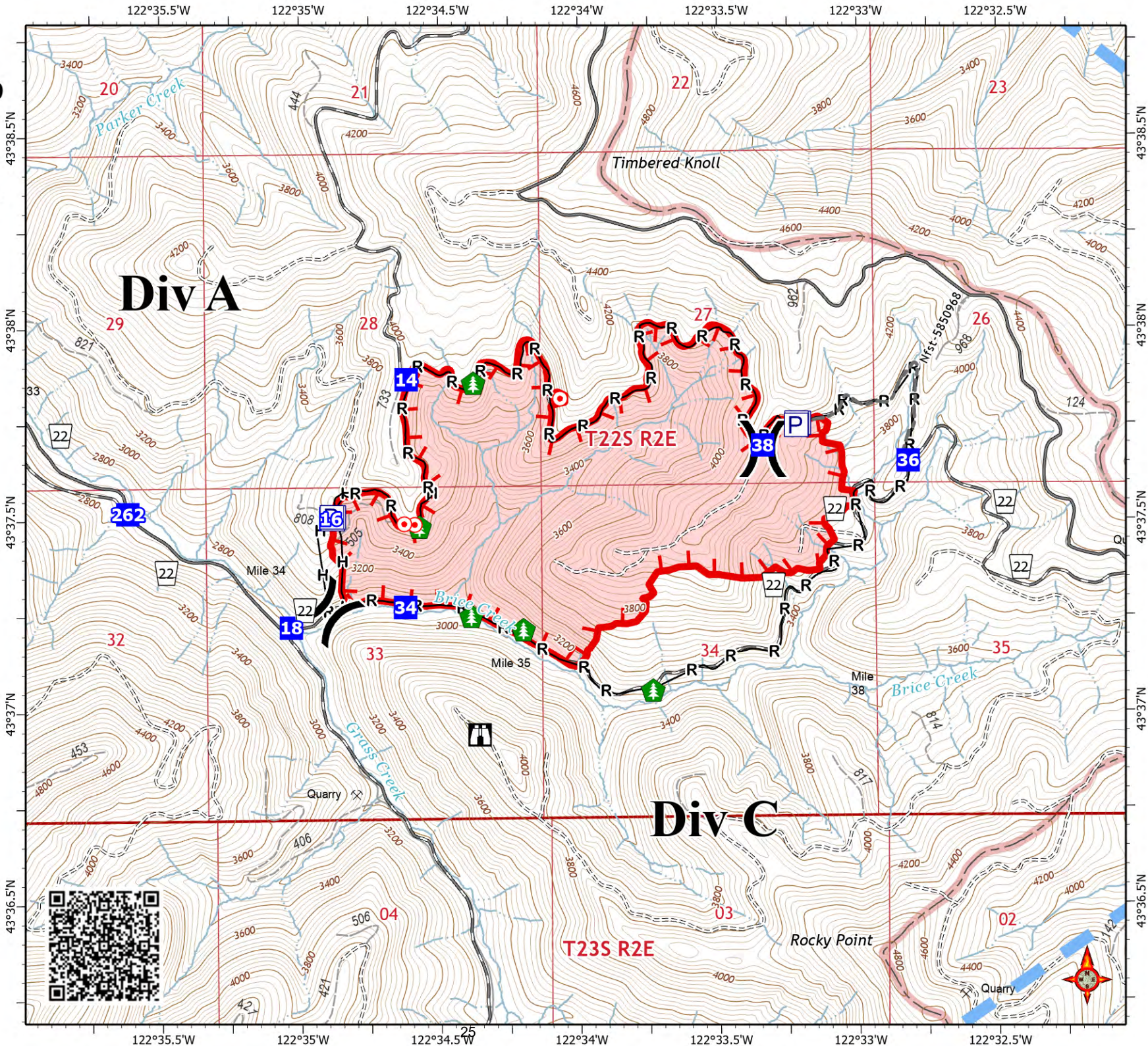
583 acres at 8/31/2023 13:01:00

-  Pump
-  Water Tank
-  Division Break
-  Drop Point
-  Lookout
-  Hot Spot - Spot Fire
-  Hazard Tree
-  Completed Hand Line
-  Completed Road as Line
-  Other
-  Temporary Flight Restriction
-  Uncontained Fire Edge
-  Road - Light Duty - Gravel
-  Road - Light Duty - Paved
-  Road - Unimproved
-  Local Road
-  4WD
-  Trail
-  Fire Area



S. Bushnell
08 31 23
2056 Hours

Acres from IR and GPS
Datum: North American 1983

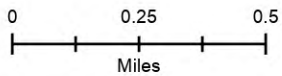
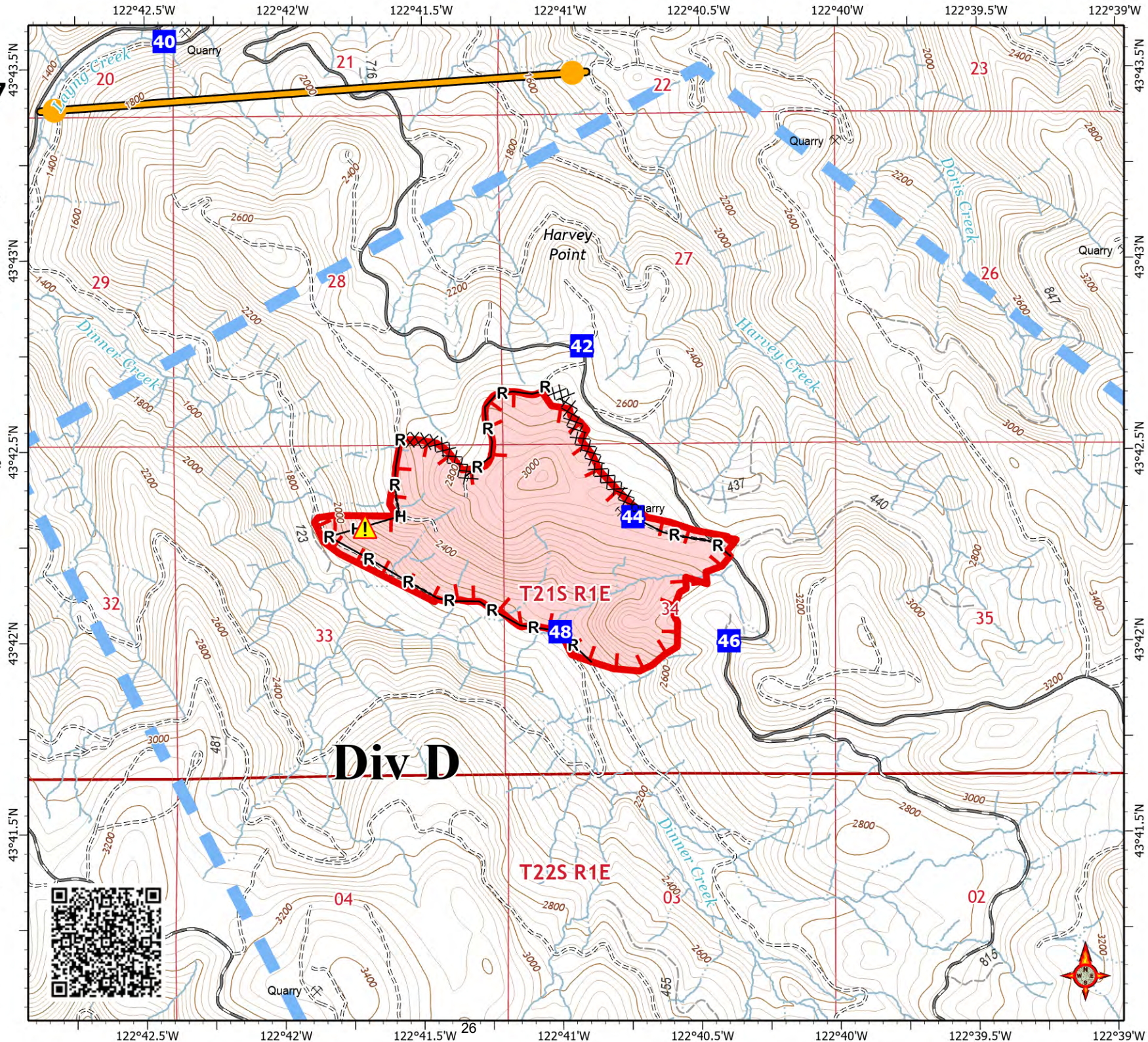


Dinner OR-UPF-000357 IAP Map

09/01/2023

329 acres at 8/30/2023 22:02:00

- Drop Point
- ▲ Hazard
- ⊗⊗ Completed Dozer Line
- Completed Hand Line
- R Completed Road as Line
- Management Action Point
- ▬▬▬ Temporary Flight Restriction
- ┌ Uncontained Fire Edge
- Road - Light Duty - Gravel
- Road - Light Duty - Paved
- ⋯ Road - Unimproved
- Local Road
- ⋯ 4WD
- ⋯ Trail
- Fire Area



S. Bushnell
08 31 23
2056 Hours

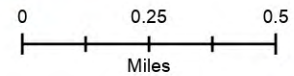
Acres from IR and GPS
Datum: North American 1983

Grizzly OR-UPF-000341 IAP Map

09/01/2023

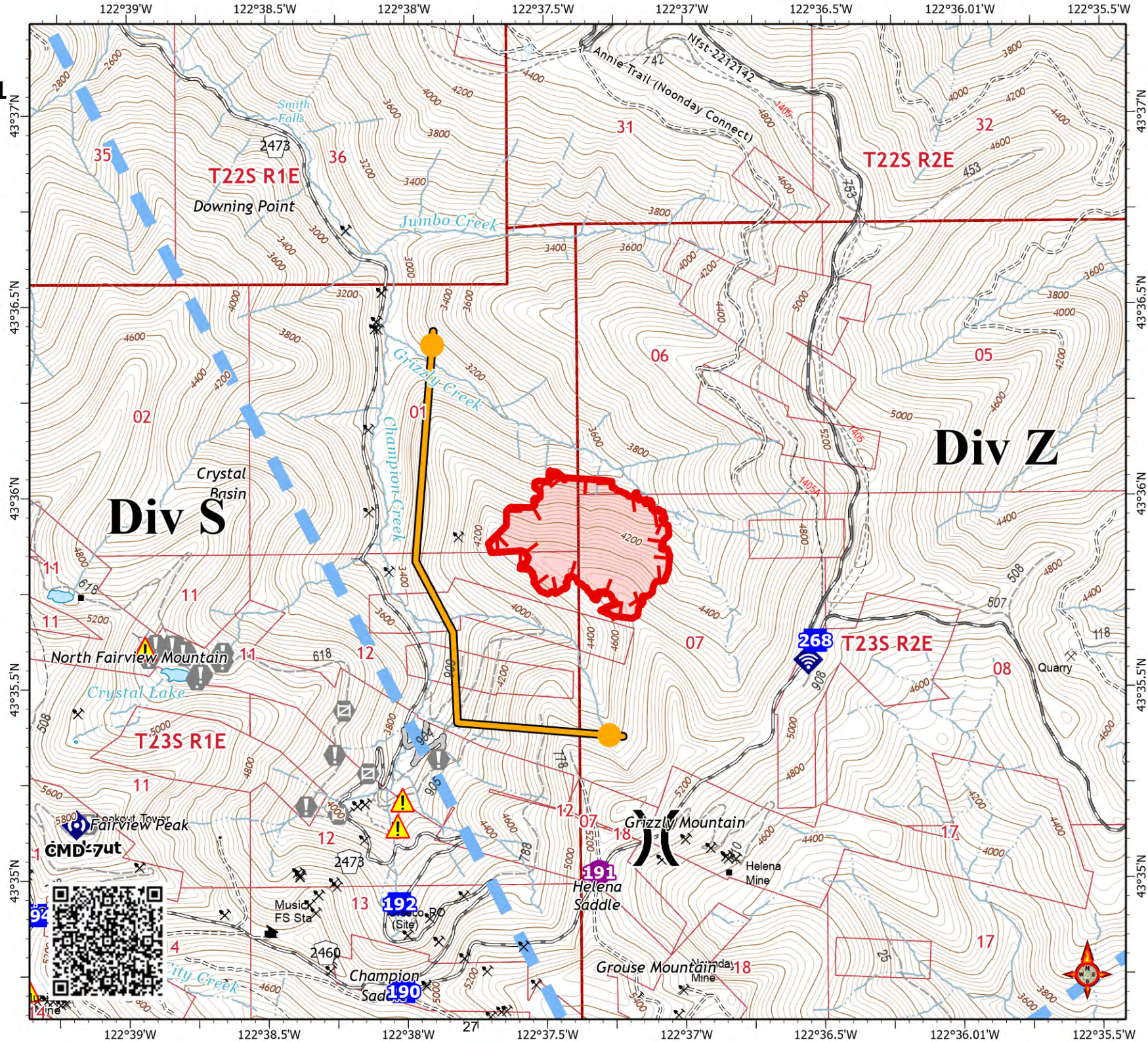
92 acres at 8/30/2023 22:02:00

- Helispot
-) Division Break
- Drop Point
- ⚠ Value at Risk
- Ⓜ Gate
- 📶 Internet Access
- 📶 Repeater
- ⚠ Hazard
- Structures
- ▶ Forest Service Facility
- Lookout - Permanent
- Access or Improved Road
- Management Action Point
- Temporary Flight Restriction
- Uncontained Fire Edge
- Road - Light Duty - Dirt
- Road - Light Duty - Gravel
- Road - Unimproved
- - - Trail
- Local Road
- - - 4WD
- - - Trail
- Fire Area



S. Bushnell
08 31 23
2056 Hours

Acres from IR and GPS
Datum: North American 1983



Incident Maps & Updates

Contact Information for Situation Unit:

- 2023.dinner.situation@firenet.gov
- [360-584-3373](tel:360-584-3373)

Deadline for Updates: 2000 nightly (remember to re-sync incident within ESRI FieldMaps App at morning briefing)

Avenza:

To download maps, scan the QR code on the cover of the IAP.

FieldMaps:

For access contact the Situation Unit or GISS to get added.

Don't have Avenza or FieldMaps:

Please draw corrections and new features on your paper map, take a picture of it and **email** or **text** it to the Situation Unit details listed above.

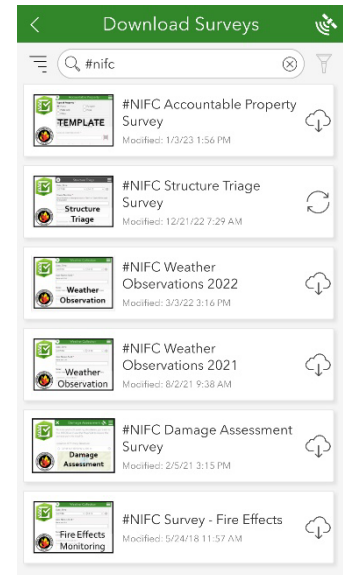
Survey123:

When to use it:

- *Accountable Property* (pumps, tanks, other)
- *Structure Triage* (Structures categorized by defensible or non-defensible)
- *Damage Assessment* (Record post-fire structure damage assessments)

How to use it:

- After downloading the app, log in using your NIFC credentials.
- Tap the 'Download Surveys' button from the bottom or under your avatar icon.
- Search using '#NIFC' to find the authoritative surveys.
- Tap the cloud down arrow button to download to your device.
- Tap the survey, then the 'Collect' button to begin.



Technical Help:

Avenza How to



<https://support.avenzamaps.com>

How to FieldMaps



<https://youtu.be/YSZiuUL5Zzo>



EMERGENCY PLAN INCIDENT WITHIN AN INCIDENT

ON SCENE INCIDENT COMMANDER

In the event of an accident or medical incident of any size, your primary responsibility is to ENSURE that the victim(s) receive prompt and effective Triage, Treatment, Extrication and Transport.

- **ENSURE THE MEDICAL INCIDENT REPORT IN THE INCIDENT ACTION PLAN IS BEING USED AND FOLLOWED- *IF DETERMINED TO BE A GREEN, DO NOT DECLARE EMERGENCY TRAFFIC AND ONLY COMPLETE LINE 1-4 ON MIR*.**
- Conduct size-up of the incident, including nature of accident, number type of resources involved, latitude and longitude location (DD° MMM.MM format). Notify incident communications center and supervisor. Request assistance as needed.
- Order and coordinate medical and support response to the accident.
- Evaluate special needs (law enforcement, haz mat, etc.).
- Clear the command frequency if medical emergency. Coordinate with incident communications and air attack for air medical transportation needs.
- Preserve and photograph the scene for accident investigation.
- Remain aware of surroundings and the status of the main incident (delegate personnel to monitor the main fire) to ensure safety of medical treatment personnel.
- Until relieved, supervise and manage all personnel involved at the incident scene.

MEDICAL PLAN (ICS 206 WF)

Incident/Project Name				Operational Period				
Dinner, Grizzly, Brice Creek Fires				9/01/2023 0700 - 1900				
Ambulance Services								
Name	Complete Address	Phone	Advanced Life Support (ALS)					
			Yes	No				
South Lane Fire & Rescue	233 E Harrison Ave Cottage Grove, OR 97424	911	X					
Eugene Springfield Fire Dept	Multiple Stations Eugene & Springfield	911	X					
North Douglas County Fire & EMS	531 S Cedar St., Drain, OR 97435	911	X					
Air Ambulance Services								
Name	Phone	Capability						
Life Flight	Use VMED 29 air to ground	Critical Care Medic/RN Night Capable 100x100 LZ						
Oregon Army National Guard	Use VMED 29 air to ground Roseburg, OR	MEDIC Night Vision Capable						
Teton Short Haul	Use VMED 29 air to ground Sunriver, OR	EMT Daytime Use Only						
Hospitals								
Name Complete Address	Coordinate Standard Degrees Decimal Minutes DD° MM.MMM' N - Lat DD° MM.MMM' W - Long		Travel Time From ICP Air Gnd		Phone	Helipad Yes No		Level of Care Facility
	Lat:	44°04.876' N	15 min	30 min		541-222-6931	X	
Sacred Heart Medical Center (Riverbend) 3333 Riverbend, Drive Springfield, OR	Long:	123°01.588' W						
	Lat:	45°32.668' N	1hr	2hr	503-413-3121	X		Level 1 Trauma Burn Center
Legacy Emanuel 2801 N Gantenbien Portland, OR	Long:	122°40.293' W						
	Lat:	43°48.2292' N	10 min	10 min	541-767-5500	X		Basic
PeaceHealth Cottage Grove Community Medical Center 1515 Village Dr Cottage Grove, OR 97424	Long:	123°2.3801' W						
Division Branch Group	Capability			Personnel				
Grizzly Fire S				REMS 10 (O-82) Jesse EMPF Pending				
Grizzly Fire Z				Ambo 1 (E-10) Brody REMS Pending EMPF Pending				
Grizzly Fire Structure Group				Utilize Local Resources				
Dinner Fire Div D				Ambo 2 (E-3) Zach EMPF Pending				

MEDICAL PLAN (ICS 206 WF)

Brice Creek Fire Div A		REMS Pending Ambo Pending	
Brice Creek Fire Div C		EMPF Pending	
Sharps Creek Basecamp	ALS kit, OTC meds	Lee Venning MEDL (O-1.44)	
Dorena Grange ICP	BLS kit, OTC meds	Diana Braun MEDL (O-1.45)	
Prepared By (Medical Unit Leader)		Reviewed By (Safety Officer)	
Diana Braun	<i>Diana Braun</i>	Troy Corn	<i>Troy Corn</i>
	8/31/2023		8/31/2023

MEDICAL PLAN (ICS 206 WF)

Controlled Unclassified Information//Basic

Medical Incident Report

FOR A NON-EMERGENCY INCIDENT, WORK THROUGH CHAIN OF COMMAND TO REPORT AND TRANSPORT INJURED PERSONNEL AS NECESSARY.

FOR A MEDICAL EMERGENCY: IDENTIFY ON SCENE INCIDENT COMMANDER BY NAME AND POSITION AND ANNOUNCE "MEDICAL EMERGENCY" TO INITIATE RESPONSE FROM IMT COMMUNICATIONS/DISPATCH.

Use the following items to communicate situation to communications/dispatch.

1. CONTACT COMMUNICATIONS / DISPATCH (Verify correct frequency prior to starting report)

Ex: "Communications, Div. Alpha. Stand-by for Emergency Traffic."

2. INCIDENT STATUS: Provide incident summary (including number of patients) and command structure.

Ex: "Communications, I have a Red priority patient, unconscious, struck by a falling tree. Requesting air ambulance to Forest Road 1 at (Lat./Long.) This will be the Trout Meadow Medical, IC is TFLD Jones. EMT Smith is providing medical care."

Severity of Emergency / Transport Priority	<input type="checkbox"/> RED / PRIORITY 1 Life or limb threatening injury or illness. Evacuation need is IMMEDIATE <i>Ex: Unconscious, difficulty breathing, bleeding severely, 2° – 3° burns more than 4 palm sizes, heat stroke, disoriented.</i> <input type="checkbox"/> YELLOW / PRIORITY 2 Serious Injury or illness. Evacuation may be DELAYED if necessary. <i>Ex: Significant trauma, unable to walk, 2° – 3° burns not more than 1-3 palm sizes.</i> <input type="checkbox"/> GREEN / PRIORITY 3 Minor Injury or illness. Non-Emergency transport <i>Ex: Sprains, strains, minor heat-related illness.</i>	
Nature of Injury or Illness & Mechanism of Injury		<i>Brief Summary of Injury or Illness (Ex: Unconscious, Struck by Falling Tree)</i>
Transport Request		<i>Air Ambulance / Short Haul/Hoist Ground Ambulance / Other</i>
Patient Location		<i>Descriptive Location & Lat. / Long. (WGS84)</i>
Incident Name		<i>Geographic Name + "Medical" (Ex: Trout Meadow Medical)</i>
On-Scene Incident Commander		<i>Name of on-scene IC of Incident within an Incident (Ex: TFLD Jones)</i>
Patient Care		<i>Name of Care Provider (Ex: EMT Smith)</i>

3. INITIAL PATIENT ASSESSMENT: Complete this section for each patient as applicable (start with the most severe patient)

Patient Assessment: See IRPG page 106

Treatment:

4. TRANSPORT PLAN:

Evacuation Location (if different): (Descriptive Location (drop point, intersection, etc.) or Lat. / Long.) Patient's ETA to Evacuation Location:

Helispot / Extraction Site Size and Hazards:

5. ADDITIONAL RESOURCES / EQUIPMENT NEEDS:

Example: Paramedic/EMT, Crews, Immobilization Devices, AED, Oxygen, Trauma Bag, IV/Fluid(s), Splints, Rope rescue, Wheeled litter, HAZMAT, Extrication

6. COMMUNICATIONS: Identify State Air/Ground EMS Frequencies and Hospital Contacts as applicable

Function	Channel Name/Number	Receive (RX)	Tone/NAC *	Transmit (TX)	Tone/NAC *
COMMAND					
AIR-TO-GRND					
TACTICAL					

7. CONTINGENCY: Considerations: If primary options fail, what actions can be implemented in conjunction with primary evacuation method? Be thinking ahead.

8. ADDITIONAL INFORMATION: Updates/Changes, etc.

REMEMBER: Confirm ETA's of resources ordered. Act according to your level of training. Be Alert. Keep Calm. Think Clearly. Act Decisively.

Controlled Unclassified Information//Basic