

# INCIDENT ACTION PLAN DINNER, GRIZZLY, BRICE CREEK

September 3, 2023

Operational Period 0700-1900

**DINNER**  
**OR-UPF-000357**  
221-ICS  
P6 QLJ7 (0615)

**GRIZZLY**  
**OR-UPF-000341**  
P6 QL0W (0615)

**BRICE CREEK**  
**OR-UPF-000359**  
P6 QLJ4 (0615)



IAP, MAPS, CHECK-IN


This page intentionally left blank.



## INCIDENT OBJECTIVES (ICS 202)

<b>1. Incident Name:</b>	<b>2. Operational Period: DAY</b>	
DINNER, GRIZZLY & BRICE CREEK FIRES	Date/Time From: 09/03/2023 0700      SUN	Date/Time To: 09/03/2023 1900      SUN
<b>3. Objective(s):</b>		
<p>Control Objectives:</p> <ul style="list-style-type: none"> <li>• Identify, evaluate and reduce risks to firefighters and the public through the use of Deliberate Risk Assessment process.</li> <li>• Minimize acres burned and impacts to communities and infrastructure by utilizing the Incident Strategic Alignment Process to guide operations in the development of strategies and tactics to be implemented by resources on the Grizzly, Dinner, and Brice Creek Fires</li> <li>• Implement strategic actions that have the highest probability of success to mitigate adverse impacts to private properties, including:               <ul style="list-style-type: none"> <li>• Bohemia Mining District</li> <li>• Fairview Communication site</li> <li>• Private industrial and non-industrial timber land</li> <li>• Infrastructure &amp; Recreation</li> <li>• Protection of habitat for Threatened and Endangered Species.</li> </ul> </li> </ul> <p>Management Objectives:</p> <ul style="list-style-type: none"> <li>• Treat each other with dignity and respect and act in a professional manner while on the fire and in the community.</li> <li>• Work Closely with Agency Administrators and Lead Resource Advisor to plan and implement actions that protect sensitive natural and cultural resources at risk from suppression actions.</li> <li>• Maintain and enhance relationships with cooperators, stakeholders, landowners, and communities by providing accurate and timely information.</li> <li>• Manage cost commensurate with values at risk and maintain fiscal accountability.</li> </ul>		
<b>4. Operational Period Command Emphasis:</b>		
<p>Implement strategies and tactics to achieve incident objectives with the least amount of risk practical and the highest probability of success. On Dinner and Brice Creek fires, continue to secure, mop-up and patrol existing firelines, prepare for and complete burnouts of indirect firelines as needed to minimize additional fire spread. On Grizzly, continue to monitor fire behavior for additional growth. Complete structure protection assessments and plans and continue to prep contingency lines as needed. Ensure initial attack support readiness to respond to new fires and support the local area with any additional fires.</p>		
<b>General Situational Awareness:</b>		
<p>These fires are burning in very steep and difficult terrain, be aware of rolling material and hazard trees that may be present. With the moderated weather conditions and fire behavior don't become complacent, hazards are still present and mitigations need to be in place to minimize exposure.</p>		
<b>5. Site Safety Plan Required?</b> Yes <input type="checkbox"/> No <input checked="" type="checkbox"/>		
<b>Approved Site Safety Plan(s) Located</b>		
<b>6. Incident Action Plan</b> (the items checked below are included in this Incident Action Plan):		
<input checked="" type="checkbox"/> ICS 202 <input checked="" type="checkbox"/> ICS 203 <input checked="" type="checkbox"/> ICS 204 <input checked="" type="checkbox"/> ICS 205 <input checked="" type="checkbox"/> ICS 205A <input checked="" type="checkbox"/> ICS 206	<input type="checkbox"/> ICS 207 <input type="checkbox"/> ICS 208 <input checked="" type="checkbox"/> ICS 220 <input checked="" type="checkbox"/> Map/Chart <input checked="" type="checkbox"/> Weather Forecast/Tides/Currents	Other Attachments: <input checked="" type="checkbox"/> FIRE BEHAVIOR MESSAGE <input checked="" type="checkbox"/> SAFETY MESSAGE <input checked="" type="checkbox"/> HR MESSAGE <input type="checkbox"/> _____
<b>7. Prepared by:</b> JILL JOHNSON	<b>Position/Title:</b> PSC	<b>Signature:</b> <i>Jill Johnson</i>
<b>8. Approved by Incident Commander:</b>	<b>Name:</b> BOB SHINDELAR	<b>Signature:</b> <i>Bob Shindelar</i>
<b>ICS 202</b>	<b>IAP Page</b>	<b>Date/Time:</b> 09/02/2023 2000

## ORGANIZATION ASSIGNMENT LIST (ICS 203)

<b>1. Incident Name:</b>		<b>2. Operational Period: DAY</b>	
DINNER, GRIZZLY & BRICE CREEK FIRES		Date/Time From: 09/03/2023 0700      SUN	Date/Time To: 09/03/2023 1900      SUN
<b>3. Incident Commander(s) and Command Staff:</b>		<b>FACILITIES UNIT DENISE HILKEY</b>	
IC/UC	JEFF DIMKE JEFF BOUSCHOR (T)	GROUND SUPPORT UNIT	DAVID HARSH TOM FORTIN
DEPUTY	BOB SHINDELAR	COMMUNICATIONS UNIT	MISSY PARKER
SAFETY OFFICER	TROY CORN JACK CATES; TAIJA CORSO	MEDICAL UNIT	LEE VENNING DIANA BRAUN
INFORMATION OFFICER	JOEL BRUMM HEATHER APPELHOF (T)	<b>7. Operations Section:</b>	
HUMAN RESOURCES	SUSIE MANEZES	PLANNING OPS SECTION CHIEF	MATT CASTLE DEANA WALL (T)
LIAISON OFFICER	JEFF SEVIGNEY JON MEIER (T)	FIELD OPS SECTION CHIEF	KURT RANTA CODY ACORD (T)
<b>4. Agency/Organization Representative(s):</b>		STRATEGIC OPS SECTION CHIEF	TONY ENGEL AARON ROWE
<b>Agency/Organization</b>	<b>Name</b>		
UMPQUA NATIONAL FOREST	DAVID ANDERSON, JACK LEWIS CARIN VADALA (T)		
ODF	CHRIS CLINE BILL HUNT		
WILLAMETTE NATIONAL FOREST	MOLLY JULLERAT	<b>Branch GRIZZLY</b>	
BUREAU OF LAND MANAGMENT	DENNIS TEIZEL	BRANCH DIRECTOR	JEROMY WILSON
LEAD READ - USFS	JESSE SOY	DIVISION/GROUP	S      CHRIS WHITE CHRIS RAMISKEY (T)
USFS - SW IARR	MANUEL MARTINEZ	DIVISION/GROUP	Z      BOB HINDS PAT CHISM (T)
<b>5. Planning Section:</b>		DIVISION/GROUP	STRUCTURE      MILES POLLACK CRIS MACHADO (T)
CHIEF	JILL JOHNSON	DIVISION/GROUP	A      KEN FOSS NICK WIGLE (T)
DEPUTY	SEAN BROGAN	DIVISION/GROUP	C      IAN MCCORD JON ELLIS (T)
RESOURCES UNIT	MARGE HUTCHINSON JENNIFER NORTON (T)	DIVISION/GROUP	D      JEFF LUCAS CARSON ZEPP (T)
SITUATION UNIT	DAVID WISCHER		
DOCUMENTATION UNIT	DEIDRE SMITH (VIRTUAL)		
DEMOBILIZATION UNIT	MIKE HESTON (VIRTUAL)		
IT SPECIALIST	GEORGE JENKINS; VONIETA WOODARD LIBBY EVERETT (T); JUSTIN LEACH (T)		
GIS SPECIALIST	SHAWN BUSHNELL MIKE TONKEL (VIRTUAL)	<b>7b. Air Operations Branch:</b>	
FIRE BEHAVIOR ANALYST	DON STRAND BRYAN GAINES	AIR OPS BRANCH DIRECTOR	PAUL BALFOUR
INCIDENT METEOROLOGIST	BOB TOBIN		
<b>6. Logistics Section:</b>		<b>8. Finance/Administration Section:</b>	
CHIEF	KEVIN HAUGHTON	CHIEF	CHRISTINA GOEBEL STEVE CROW (T)
DEPUTY	WHIT SPENCER	DEPUTY	CHERI FULLER
SUPPLY UNIT	JOHN KAUPA THAD FRATER	PROCUREMENT UNIT	TODD POWELL
FACILITIES UNIT	BRANDY LANGUM	COMPENSATION UNIT	CHERI FULLER
		COST UNIT	KAY HIGH
<b>9. Prepared By:</b>	<b>Name:</b> JENNIFER NORTON	<b>Position/Title:</b> RESL (T)	<b>Signature:</b>
ICS 203	IAP Page	<b>Date/Time:</b> 09/02/2023 2000	

## Fire Weather Forecast

**FORECAST NO:** 4

**NAME OF FIRE:** Dinner, Grizzly, Brice Creek Fires

**FORECAST FOR:** Sun, Sep 3, 2023 Day Shift

**UNIT:** OR-UPF-000357

**FORECAST ISSUED:** Sat Sep 2, 2023, 1800 PDT

**SIGNED:** Bob Tobin - IMET

---

**WEATHER DISCUSSION:** The upper-level low is expected to begin to shift to the east on Sunday in response to several weak and shallow waves moving into the Pacific Northwest. This will keep the mention of showers in the forecast Sunday and Monday. The heaviest showers may likely be Sunday night. Temperatures will remain on the cool side of normal through Monday. Morning fog and low stratus will be probable in the valleys and canyons both Sunday morning and Monday morning. Tuesday will be a transition day as the closed low kicks off to the east and another shallow wave moves along the B.C. border and northern Washington on Wednesday. Any precipitation with the Wednesday system will remain north of the area, but it will keep the flow westerly resulting in temperatures on the cool side of normal.

---

**TODAY:** Cloudy. A chance of showers.

**Max Temperature(°F): (Valleys) 67-72 (1-3 cooler)      Min RH: (Valleys) 55-65% (little change)**  
**(Ridges) 65-70 (1-3 cooler)                              (Ridges) 55-65% (little change)**

**20 FT Winds:**

**Valleys and Slopes:** Becoming upslope 4-7 mph after 1100.

**Ridgetops:** SSE 3-5 mph...becoming WNW 5-10 mph after 1100.

**CWR (0.25"+): 20%      Inversion Break/Mixing Heights: 1030/3800 ft.      LAL: 1      Haines: 2 (Very Low)**

---

**TONIGHT:** A chance of showers through the night. Low clouds and areas of fog.

**Min Temperature (°F):**

**Valleys**                      50-55

**Ridgetops**                 48-52

**Max RH:**

**Valleys**                      90-100%

**Ridgetops**                 85-95%

**20 FT Winds:**

**Slope/Valleys:** Downslope/drainage 3-5 mph after 2000.

**Ridgetops:**                WNW 4-7 mph.

**CWR (0.25"+): 25%      LAL: 1.      INVERSION:** Weak inversion after 1900.

---

**EXTENDED OUTLOOK:**

**Monday...** Mostly cloudy. A chance of showers. Highs 60-70. Relative humidity 55-65% Winds: NW 5-10 mph.

**Tuesday and Wednesday...** Mostly sunny. Highs 60-70. Humidity: 45-55% WNW 8-12 mph.

**PLEASE submit your weather observations to the IMET.**

***Snap a picture of your observations and text them to: (509) 844-7003***

# FIRE BEHAVIOR FORECAST

<b>FORECAST NUMBER:</b> 4	<b>TYPE OF FIRE:</b> Wildfire
<b>FIRE NAME:</b> Dinner, Grizzly, and Brice Creek	<b>OPERATIONAL PERIOD:</b> 0700-1900 September 3, 2023
<b>DATE ISSUED:</b> September 2, 2023	<b>TIME ISSUED:</b> 2000 Hours
<b>UNIT:</b> Umpqua National Forest	<b>SIGNED:</b> Don Strand – FBAN, Bryan Gaines FBAN (t)

## INPUTS

**WEATHER SUMMARY:** See Fire Weather Forecast for Details

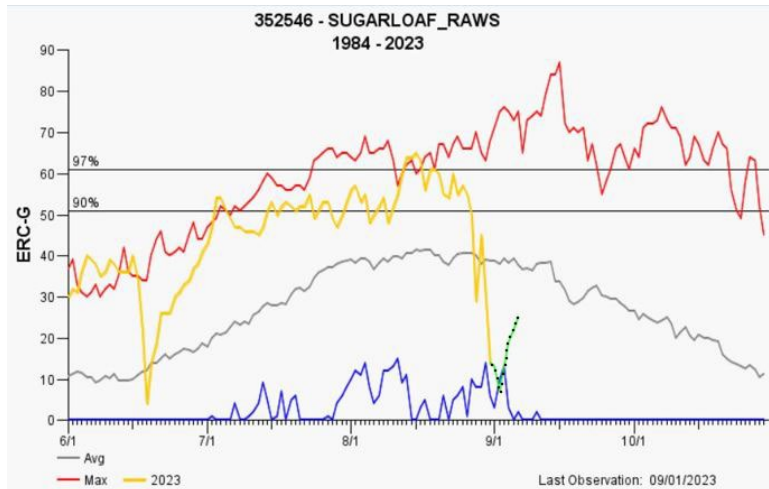
**FUELS:**

Fuels in the fire area are primarily composed of *Timber Litter*, and *Timber Understory with moss/lichen present in most stands*. Mature conifer stands with western hemlock and Douglas fir present, generally have heavy surface fuel loading. 30 to 50+ year old second growth conifer stands contain needle litter and some down woody debris. Brush and reproduction present in areas with less dense canopies.

## OUTPUTS

**FIRE BEHAVIOR GENERAL:**

Minimal fire behavior is expected with little to no perimeter growth. Continued smoldering in duff, larger down logs and forest debris.



Rebound of ERC values will lag behind the return of warmer, drier weather conditions.

**FIRE BEHAVIOR SPECIFIC:**

**Dinner Fire, Grizzly, and Brice Creek Fires:** With Thursday’s moisture and today’s forecast for additional moisture, minimal fire activity is expected with little to no perimeter growth. Areas of heavy dead and downed fuels will continue to consume along with ground fire in the duff. Burning standing dead trees will continue to burn creating arial hazard. The moistened soil will increase the chance of burning rolling debris carrying fire across containment lines. Even though these spot fires may not grow with the high fuel moistures there is a possibility they may when conditions return to a drying trend.

**Initial Attack:** In the event resources respond to a new start, recognize that fuels and topography may be different than areas you have previously worked in.

**AIR OPERATIONS:** Low clouds and fog may prohibit air operations over the fires.

## SAFETY

Continue to watch for fire weakened trees and snags. Potential for roll outs of larger material on steep slope.



## SAFETY MESSAGE

3 September 2023

**INCIDENT: DINNER/ GRIZZLY/ BRICE CREEK**

**OPERATIONAL PERIOD: 0700-1900**

### TOPICS:

#### **MANAGING THE MAYDAY**

The four (4) W's of size up: While we fight fires of varying complexities throughout the year, we rarely (and thankfully) deal with managing the EMS incident from beginning to end. This can be a daunting and stressful task for personnel. While the Emergency Plan is a useful tool, the four (4) W's is simple, easy and provides you with a guide to establish most of the pertinent information needed to successfully manage the IWI.

"W"hat do I have?

"W"hat am I doing?

"W"hat do I need?

"W"ho is in command?

We call this the 30 second blueprint for success. While it may not answer all the questions needed, it certainly gets you off on the right foot.

#### **DELIBERATE RISK ASSESSMENT SUMMARY**

NW12 utilizes a hazard summary to show the hazards, risk level and mitigations from the Deliberate Risk Assessment Process. You will find this summary in the IAP. Be sure to review and provide feedback to your DIVS and Line Safety.

***Very little on the fire falls up.***

**BEWARE OF MINESHAFTS: SEE RESOURCE ADVISOR MESSAGE!**

SAFETY OFFICERS: Jack Cates, Troy Corn

# Deliberate Risk Assessment-Hazard Summary

3 SEPT 2023

Hazard	Mitigation	Post Risk
Extraction Time	Identify medivac sites and helispots. Initiate ground transport to accident site for transport capability. Identify EMT/EMTP from resources assigned to division. Provide line-qualified paramedics to each division as available. Review IWI protocol to ensure familiarity. Consider Short Haul if conditions dictate. Utilize agency, national guard and civilian medivac as treatment/timing dictates. Evaluate ongoing need for repositioning medical personnel. Provide dust abatement on Helispots as needed.	HIGH
Aircraft	Utilize Air Attack. Ensure all resources are a safe distance from all bucket and retardant drops. Establish LCES. Utilize air to ground primary for fixed wing and bucket work as needed. Reference IRPG (Safe aircraft operations pg. 61-62). Ensure IA resources have coordination with unassigned local air resources to provide deconfliction.	HIGH
Hazard Trees	Use avoidance to limit exposure time. Fall ahead to avoid exposure. Use qualified fallers or alternate methods if needed. Conduct on- going risk analysis of all work areas. Follow Hazard Tree Safety Guidelines (IRPG page 20-21).	HIGH
Heavy Equipment	Post lookouts around equipment work areas. Establish communications with equipment boss and operator. Do not work down-slope from equipment. Follow agency guidelines for chipping operations.	HIGH
Physical Factors	Maintain hydration schedule. Closely monitor work rate and implement rest periods. Maintain nutrition. Ensure adequate work/rest.	MODERATE
Fire Behavior/Weather	Be aware of burn windows and weather impacts and min/max RH for flashy fuels/local conditions. Report changes to FBAN and IMET. Establish MAP for disengagement to provide for an orderly retreat if there is a lack of safety zones. Have a plan for disengagement that establishes a designated meeting point and maintains personnel accountability.	MODERATE
Steep Terrain/Gravity	Establish LCES. Do not work crews above or below each other. Post lookouts for rolling material. Watch footing in loose soil, rock and around vegetation. Do not work below heavy equipment. Scout and identify travel routes.	MODERATE
Transportation	Sign all incident roads that provide access to divisions. Provide daily updated travel plan maps. Practice defensive driving. In local communities obey the posted speed limits and follow school zone restrictions. Use reader boards to provide advanced warning and control entry to base camp as needed. Identify and evaluate contingency and alternate escape and travel routes. Provide dust abatement and grading as needed. Provide advanced scouting for transport access and bridge weight restrictions. Maintain awareness of logging haul routes.	MODERATE
Unburned Fuels/Firing Ops	Maintain awareness fuel dryness levels. Establish LCES. Ensure management action points are implemented and followed. Weather updates as needed during burning operations. Locate indirect firelines to minimize unburned fuels. Follow Interagency Ignition Guide. Ensure communications between all firing operations. Establish road security at all firing sites. Follow approved firing plan for unburned fuels. If utilizing aerial ignitions, make sure firing plan is in place, communicated to, and understood by all resources. Utilize separate Air to Ground frequencies for operations as appropriate.	MODERATE
Environmental Factors	Assign medical personnel to camp. Assess for known allergies and report to medical personnel. Obtain Bee Bopper/wasp spray and yellow jacket traps. Maintain an awareness of wildlife and poison oak. Identify and report allergies through your chain of command. Work with READs and GISS to evaluate and identify mineshafts. Avoid, flag and communicate locations of mineshafts. Provide visqueen for rainfall protection.	MODERATE
Structure Protection	Review structure protection plan and ground truth whether defensible. Identify and report compromised service poles and maintain one span avoidance area. Identify downed lines. Treat all powerlines as live. Identify and avoid vehicles, tires, propane tanks, gas tanks and heavy fuels concentrations.	MODERATE
Communication	Evaluate dead zones prior to engagement. Utilize human repeaters as needed. Ensure accountability of resources in problem areas. Spiking resources must have communication coverage.	LOW
Viral Transmission Mitigations, Communicable Disease	Maintain awareness of health and perform self-checks. Report and isolate if not feeling well. Use remote briefings, spike camps and logistical layouts that provide for social-distancing as necessary. Establish liaison with Lane County Public Health.	LOW
Public Interaction	Implement area and road closures as necessary. Maintain a lookout for hunters in and out of closure areas. Maintain awareness of evacuation areas and provide accurate information dissemination. <b>Maintain awareness of hunters and holiday recreation.</b>	LOW
Initial Attack	Ensure identified IA resources are briefed of expectations and ensure communication plan is provided. Ensure resources are briefed on IA command structure. Provide identified crews with area maps.	LOW



## Division/Group Assignment List (ICS 204 WF)

Controlled Unclassified Information//Basic

<b>1. Incident Name:</b>				<b>3.</b>		
DINNER, GRIZZLY & BRICE CREEK FIRES				<b>GRIZZLY</b>	<b>Division/Group</b>	
<b>2. Operational Period: DAY</b>					<b>S</b>	
Date/Time From: 09/03/2023 0700      SUN		Date/Time To: 09/03/2023 1900      SUN				
<b>4. Operations Personnel</b>						
<b>OPERATIONS CHIEF</b>		KURT RANTA CODY ACORD (T)		<b>SAFETY OFFICERS</b>		TROY CORN JACK CATES; TAIJA CORSO
<b>BRANCH DIRECTOR</b>		JEROMY WILSON		<b>DIVISION/GROUP SUPERVISOR</b>		CHRISTOPHER WHITE CHRIS RAMISKEY (T)
<b>5. Resources Assigned this Period</b>						
Strike Team / Task Force / Resource Designator		LWD	Leader	Number Persons	Drop Off PT./Time	Pick Up PT./Time
O-1.65 SOF2		09/14	JOSH NORTHRUP	1	SHARPS CREEK BASE CAMP/0700	SHARPS CREEK BASE CAMP/1900
O-1.84 SOFR		09/14	JEFF HIGENS	1	SHARPS CREEK BASE CAMP/0700	SHARPS CREEK BASE CAMP/1900
O-3 TFLD		09/08	BEN CLINE	1	SHARPS CREEK BASE CAMP/0700	SHARPS CREEK BASE CAMP/1900
O-14 HEQB		09/08	JOSH BROCK	1	SHARPS CREEK BASE CAMP/0700	SHARPS CREEK BASE CAMP/1900
O-2 FMOD CREEL CUTTING INC		09/15	TYLER GRAVES	2	SHARPS CREEK BASE CAMP/0700	SHARPS CREEK BASE CAMP/1900
O-13 FMOD URBAN ARBOR CARE		09/08	CHARLES LYSTRUP	2	SHARPS CREEK BASE CAMP/0700	SHARPS CREEK BASE CAMP/1900
C-8 CRW1 PIONEER PEAK IHC		09/14	KRISTOFER BAUMGARTNER	23	SHARPS CREEK BASE CAMP/0700	SHARPS CREEK BASE CAMP/1900
C-10000 CRW2 PACIFIC OASIS ODF IRA		09/13	GEOFF ANDERSON	20	SHARPS CREEK BASE CAMP/0700	SHARPS CREEK BASE CAMP/1900
C-10001 CRW2 TOM FERY C190 ODF IRA			FRANCISCO GARCIA	20	SHARPS CREEK BASE CAMP/0700	SHARPS CREEK BASE CAMP/1900
C-7 CRW2 TOM FERRY		09/09	SEGEL	20	SHARPS CREEK BASE CAMP/0700	SHARPS CREEK BASE CAMP/1900
C-9 CR2I SANTIAM RIVER		09/14	MATHIAS CUISON JR	19	SHARPS CREEK BASE CAMP/0700	SHARPS CREEK BASE CAMP/1900
E-4 WTS2 PACIFIC RIDGELINE		09/15	CARROLL HUFFMAN	1	SHARPS CREEK BASE CAMP/0700	SHARPS CREEK BASE CAMP/1900
E-6 DOZ4 R & L			MIKE SMITH	1	SHARPS CREEK BASE CAMP/0700	SHARPS CREEK BASE CAMP/1900
O-82 REMS 10 - BEYOND THE EDGE REMS 10		09/14	JESSE BEAN	4	SHARPS CREEK BASE CAMP/0700	SHARPS CREEK BASE CAMP/1900
E-15 VUTV TOP GUN						
<b>8. Division/Group Communication Summary</b>						
Function	Channel	RX Frequency N/W	RX Tone/NAC	TX Frequency N/W	TX Tone/NAC	Mode
TACTICAL	4	166.7250	100.0	166.7250	100.0	A
COMMAND	7	170.0625	100.0	162.4375	100.0	A
AIR TO GROUND	13	165.9875		165.9875		A
AIR TO GROUND	14	173.5000		173.5000		A
<b>9. Prepared By (Resource Unit Leader)</b>			<b>Approved By (Planning Section Chief)</b>		<b>Date</b>	<b>Time</b>
MARGE HUTCHINSON			JILL JOHNSON		09/02/2023	2000

**Division/Group Assignment List (ICS 204 WF)**  
**Controlled Unclassified Information//Basic**

<b>1. Incident Name:</b>			<b>3.</b>			
DINNER, GRIZZLY & BRICE CREEK FIRES			<b>Branch:</b>		<b>Division/Group</b>	
<b>2. Operational Period: DAY</b>			GRIZZLY		S	
Date/Time From: 09/03/2023 0700	SUN	Date/Time To: 09/03/2023 1900				
<b>4. Operations Personnel</b>						
<b>OPERATIONS CHIEF</b>		KURT RANTA CODY ACORD (T)		<b>SAFETY OFFICERS</b>		TROY CORN JACK CATES; TAIJA CORSO
<b>BRANCH DIRECTOR</b>		JEROMY WILSON		<b>DIVISION/GROUP SUPERVISOR</b>		CHRISTOPHER WHITE CHRIS RAMISKEY (T)
<b>5. Resources Assigned this Period</b>						
Strike Team / Task Force / Resource Designator		LWD	Leader	Number Persons	Drop Off PT./Time	Pick Up PT./Time
<b>6. Control Operations/Work Assignments:</b>						
<p>TASK: Construct direct and indirect fireline and secure perimeter.          PURPOSE: Prevent fire from impacting values at risk including communities to the west, historic mining community, infrastructure and commercial timberlands.          END STATE: Fire is kept west of the 2213 Road, north of 904 Road, east of the 2473 Road, and south of 22 Road, to protect the values at risk through the remainder of the fire season.</p>						
<b>7. Special Instructions:</b>						
For this DIV - add GRIZZLY FIRE to all CTRs & Shift tickets						
<b>8. Division/Group Communication Summary</b>						
Function	Channel	RX Frequency N/W	RX Tone/NAC	TX Frequency N/W	TX Tone/NAC	Mode
TACTICAL	4	166.7250	100.0	166.7250	100.0	A
COMMAND	7	170.0625	100.0	162.4375	100.0	A
AIR TO GROUND	13	165.9875		165.9875		A
AIR TO GROUND	14	173.5000		173.5000		A
<b>9. Prepared By (Resource Unit Leader)</b>			<b>Approved By (Planning Section Chief)</b>		<b>Date</b>	<b>Time</b>
MARGE HUTCHINSON			JILL JOHNSON		09/02/2023	2000

**Division/Group Assignment List (ICS 204 WF)**  
**Controlled Unclassified Information//Basic**

<b>1. Incident Name:</b>				<b>3.</b>		
DINNER, GRIZZLY & BRICE CREEK FIRES				<b>Branch:</b>  GRIZZLY	<b>Division/Group</b>  Z	
<b>2. Operational Period: DAY</b>						
Date/Time From: 09/03/2023 0700      SUN		Date/Time To: 09/03/2023 1900      SUN				
<b>4. Operations Personnel</b>						
<b>OPERATIONS CHIEF</b>		KURT RANTA CODY ACORD (T)		<b>SAFETY OFFICERS</b>		TROY CORN JACK CATES; TAIJA CORSO
<b>BRANCH DIRECTOR</b>		JEROMY WILSON		<b>DIVISION/GROUP SUPERVISOR</b>		BOB HINDS PAT CHISM (T)
<b>5. Resources Assigned this Period</b>						
Strike Team / Task Force / Resource Designator	LWD	Leader	Number Persons	Drop Off PT./Time	Pick Up PT./Time	
O-36 SOF2	09/13	RICHARD M MCCONNELL	1	SHARPS CREEK BASE CAMP/0700	SHARPS CREEK BASE CAMP/1900	
O-4 TFLD	09/08	KYLE HEFLIN	1	SHARPS CREEK BASE CAMP/0700	SHARPS CREEK BASE CAMP/1900	
C-10 CR2I TETON CREW	09/11	CLEA BERTHOLET	22	SHARPS CREEK BASE CAMP/0700	SHARPS CREEK BASE CAMP/1900	
C-6 CRW2 TOM FERRY	09/09	MEZDRAIN AMARAL	10	SHARPS CREEK BASE CAMP/0700	SHARPS CREEK BASE CAMP/1900	
C-10002 CRW2 ODF IRA - C197 AFS FORESTRY	09/11	NOE FRANCO	20	SHARPS CREEK BASE CAMP/0700	SHARPS CREEK BASE CAMP/1900	
E-13 WTS2 TIMBER FELLING	09/15	SPENCER SIMONS	1	SHARPS CREEK BASE CAMP/0700	SHARPS CREEK BASE CAMP/1900	
O-69 EMPF MEDIC 30 - BEYOND MDX	09/15	STEPHEN WOLFSTICH	1	SHARPS CREEK BASE CAMP/0700	SHARPS CREEK BASE CAMP/1900	
O-88 EMTF RAT - OZARK MEDICS	09/16	JOHN BUCHAN	2	SHARPS CREEK BASE CAMP/0700	SHARPS CREEK BASE CAMP/1900	
E-1 AMBO 3 - TRI COUNTY AMBULANCE		LONNIE CHASE	2	SHARPS CREEK BASE CAMP/0700	SHARPS CREEK BASE CAMP/1900	
O-145 REAF	09/14	KELSEY KNOX	1	SHARPS CREEK BASE CAMP/0700	SHARPS CREEK BASE CAMP/1900	
O-159 REAF	09/09	EMILY HARTWIG	1	SHARPS CREEK BASE CAMP/0700	SHARPS CREEK BASE CAMP/1900	
E-16 VUTV TOP GUN				SHARPS CREEK BASE CAMP/0700	SHARPS CREEK BASE CAMP/1900	
E-84 VUTV KWIK RESPONSE SUPPORT				SHARPS CREEK BASE CAMP/0700	SHARPS CREEK BASE CAMP/1900	
<b>8. Division/Group Communication Summary</b>						
Function	Channel	RX Frequency N/W	RX Tone/NAC	TX Frequency N/W	TX Tone/NAC	Mode
TACTICAL	5	166.7750	100.0	166.7750	100.0	A
COMMAND	7	170.0625	100.0	162.4375	100.0	A
AIR TO GROUND	13	165.9875		165.9875		A
AIR TO GROUND	14	173.5000		173.5000		A
<b>9. Prepared By (Resource Unit Leader)</b>			<b>Approved By (Planning Section Chief)</b>		<b>Date</b>	<b>Time</b>
MARGE HUTCHINSON			JILL JOHNSON		09/02/2023	1203

## Division/Group Assignment List (ICS 204 WF)

Controlled Unclassified Information//Basic

<b>1. Incident Name:</b>				<b>3.</b>			
DINNER, GRIZZLY & BRICE CREEK FIRES				<b>Branch:</b>  GRIZZLY		<b>Division/Group</b>  Z	
<b>2. Operational Period:</b> DAY							
Date/Time From: 09/03/2023 0700		Date/Time To: 09/03/2023 1900					
SUN		SUN					
<b>4. Operations Personnel</b>							
<b>OPERATIONS CHIEF</b>		KURT RANTA CODY ACORD (T)		<b>SAFETY OFFICERS</b>		TROY CORN JACK CATES; TAIJA CORSO	
<b>BRANCH DIRECTOR</b>		JEROMY WILSON		<b>DIVISION/GROUP SUPERVISOR</b>		BOB HINDS PAT CHISM (T)	
<b>5. Resources Assigned this Period</b>							
Strike Team / Task Force / Resource Designator		LWD	Leader	Number Persons	Drop Off PT./Time	Pick Up PT./Time	
<b>6. Control Operations/Work Assignments:</b>							
<p>TASK: Construct direct and indirect fireline and secure perimeter.</p> <p>PURPOSE: Prevent fire from impacting values at risk including: communities to the west, historic mining community, infrastructure, and commercial timberlands.</p> <p>END STATE: Fire is kept west of the 2213 Road, north of 904 Road, east of the 2473 Road, and south of 22 Road, to protect the values at risk through the remainder of the fire season.</p>							
<b>7. Special Instructions:</b>							
For this DIV - add GRIZZLY FIRE to all CTRs & Shift tickets							
<b>8. Division/Group Communication Summary</b>							
Function	Channel	RX Frequency N/W	RX Tone/NAC	TX Frequency N/W	TX Tone/NAC	Mode	
TACTICAL	5	166.7750	100.0	166.7750	100.0	A	
COMMAND	7	170.0625	100.0	162.4375	100.0	A	
AIR TO GROUND	13	165.9875		165.9875		A	
AIR TO GROUND	14	173.5000		173.5000		A	
<b>9. Prepared By (Resource Unit Leader)</b>			<b>Approved By (Planning Section Chief)</b>			<b>Date</b>	<b>Time</b>
MARGE HUTCHINSON			JILL JOHNSON			09/02/2023	1203

**Division/Group Assignment List (ICS 204 WF)**  
**Controlled Unclassified Information//Basic**

<b>1. Incident Name:</b>				<b>3.</b>		
DINNER, GRIZZLY & BRICE CREEK FIRES				<b>Branch:</b>  GRIZZLY	<b>Division/Group</b>  STRUCTURE	
<b>2. Operational Period: DAY</b>						
Date/Time From: 09/03/2023 0700      SUN		Date/Time To: 09/03/2023 1900      SUN				
<b>4. Operations Personnel</b>						
<b>OPERATIONS CHIEF</b>		KURT RANTA CODY ACORD (T)		<b>SAFETY OFFICERS</b>		TROY CORN JACK CATES; TAIJA CORSO
<b>BRANCH DIRECTOR</b>		JEROMY WILSON		<b>DIVISION/GROUP SUPERVISOR</b>		MILES POLLACK CRIS MACHADO (T)
<b>5. Resources Assigned this Period</b>						
Strike Team / Task Force / Resource Designator		LWD	Leader	Number Persons	Drop Off PT./Time	Pick Up PT./Time
O-1.65 SOF2		09/14	JOSH NORTHRUP	1	SHARPS CREEK BASE CAMP/0700	SHARPS CREEK BASE CAMP/1900
O-1 TFLD		09/08	JUSTIN WHITE	1	SHARPS CREEK BASE CAMP/0700	SHARPS CREEK BASE CAMP/1900
C-10002 CRW2 R&R CONTRACTING		09/14	ISMAEL RANGEL	20	SHARPS CREEK BASE CAMP/0700	SHARPS CREEK BASE CAMP/1900
C-10003 CRW2 GFP ENTERPRISES		09/14	LUIS FIGUERAS	20	SHARPS CREEK BASE CAMP/0700	SHARPS CREEK BASE CAMP/1900
C-10003 CRW2 STRATA CREW 1 (OLD C-4)		09/07	SALVADOR SANCHEZ	11	SHARPS CREEK BASE CAMP/0700	SHARPS CREEK BASE CAMP/1900
C-10004 CRW2 STRATA CREW 2 (OLD C-5)		09/07	CARDOZA	11	SHARPS CREEK BASE CAMP/0700	SHARPS CREEK BASE CAMP/1900
E-654		09/05	MIKE GRAHAM	4	SHARPS CREEK BASE CAMP/0700	SHARPS CREEK BASE CAMP/1900
E-10 ENG6 VALLEY FIRE SUPPRESSION		09/14	ZACH SMITH	3	SHARPS CREEK BASE CAMP/0700	SHARPS CREEK BASE CAMP/1900
E-13 VUTV KD OUTDOORS LLC					SHARPS CREEK BASE CAMP/0700	SHARPS CREEK BASE CAMP/1900
<b>6. Control Operations/Work Assignments:</b>						
<p>TASK: Provide structure protection assessment, planning, and preparation.  PURPOSE: Minimize fire impacts to private residences and historic structures in the fire area.  END STATE: Area to be protected is prepped and secured, including trigger points identified to implement any additional measures.</p>						
<b>7. Special Instructions:</b>						
For this DIV - add GRIZZLY FIRE to all CTRs & Shift tickets						
<b>8. Division/Group Communication Summary</b>						
Function	Channel	RX Frequency N/W	RX Tone/NAC	TX Frequency N/W	TX Tone/NAC	Mode
TACTICAL	6	168.2500	100.0	168.2500	100.0	A
COMMAND	7	170.0625	100.0	162.4375	100.0	A
AIR TO GROUND	13	165.9875		165.9875		A
AIR TO GROUND	14	173.5000		173.5000		A
<b>9. Prepared By (Resource Unit Leader)</b>			<b>Approved By (Planning Section Chief)</b>		<b>Date</b>	<b>Time</b>
MARGE HUTCHINSON			JILL JOHNSON		09/02/2023	1203

**Division/Group Assignment List (ICS 204 WF)**  
**Controlled Unclassified Information//Basic**

<b>1. Incident Name:</b>				<b>3.</b>		
DINNER, GRIZZLY & BRICE CREEK FIRES				<b>Branch:</b>	<b>Division/Group</b>  <b>A</b>	
<b>2. Operational Period: DAY</b>						
Date/Time From: 09/03/2023 0700      SUN		Date/Time To: 09/03/2023 1900      SUN				
<b>4. Operations Personnel</b>						
<b>OPERATIONS CHIEF</b>		KURT RANTA CODY ACORD (T)		<b>SAFETY OFFICERS</b>		TROY CORN JACK CATES; TAIJA CORSO
<b>BRANCH DIRECTOR</b>				<b>DIVISION/GROUP SUPERVISOR</b>		KEN FOSS NICK WIGLE, (T)
<b>5. Resources Assigned this Period</b>						
Strike Team / Task Force / Resource Designator		LWD	Leader	Number Persons	Drop Off PT./Time	Pick Up PT./Time
O-1.32 SOF2		09/12	PAUL BRNA	1	SHARPS CREEK BASE CAMP/0700	SHARPS CREEK BASE CAMP/1900
L/L TFLD		09/09	MARISSA DUARTE	1	SHARPS CREEK BASE CAMP/0700	SHARPS CREEK BASE CAMP/1900
L/L TFLD (T)		09/09	DANE DEXTER	1	SHARPS CREEK BASE CAMP/0700	SHARPS CREEK BASE CAMP/1900
C-1 CRW2 NORTH REFORESTATION CREW 2		09/11	JOSE RINCON	20	SHARPS CREEK BASE CAMP/0700	SHARPS CREEK BASE CAMP/1900
C-5 CRW2 STEELHEAD		09/10	PEDRO WRIGHT	20	SHARPS CREEK BASE CAMP/0700	SHARPS CREEK BASE CAMP/1900
C-14 CR2I GREYBACK 13A		09/09	RONALD WOOD	20	SHARPS CREEK BASE CAMP/0700	SHARPS CREEK BASE CAMP/1900
E-14 ENG6 FRANCO REFORESTATION		09/15	HUMBERTO CHOY	3	SHARPS CREEK BASE CAMP/0700	SHARPS CREEK BASE CAMP/1900
E-10 ENG6 THREE STRIPES CONTRACTING		09/16	JOE GODDARD	3	SHARPS CREEK BASE CAMP/0700	SHARPS CREEK BASE CAMP/1900
E-40 ENG3 RATTLESNAKE RIDGE ENG 41		09/14	MASON PANFIGLIO	3	SHARPS CREEK BASE CAMP/0700	SHARPS CREEK BASE CAMP/1900
E-43 ENG4 CASTLE MTN.		09/15	CHASE CORK	3	SHARPS CREEK BASE CAMP/0700	SHARPS CREEK BASE CAMP/1900
E-9 WT2S IRELAND BROTHERS		09/12	ADAM FRASIER	1	SHARPS CREEK BASE CAMP/0700	SHARPS CREEK BASE CAMP/1900
E-45 WTS2 WARREN PARTRIDGE		09/14	DARYL STUBBLEFIELD	1	SHARPS CREEK BASE CAMP/0700	SHARPS CREEK BASE CAMP/1900
E-3 DOZ4 HYDROCAT		09/13	MARK RICTOR	2	SHARPS CREEK BASE CAMP/0700	SHARPS CREEK BASE CAMP/1900
E-10 AMBO 1 - BEST PRACTICE MEDICINE		09/06	BRODY BOHRER	2	SHARPS CREEK BASE CAMP/0700	SHARPS CREEK BASE CAMP/1900
<b>8. Division/Group Communication Summary</b>						
Function	Channel	RX Frequency N/W	RX Tone/NAC	TX Frequency N/W	TX Tone/NAC	Mode
TACTICAL	1	168.0500	100.0	168.0500	100.0	A
COMMAND	7	170.0625	100.0	162.4375	100.0	A
AIR TO GROUND	13	165.9875		165.9875		A
AIR TO GROUND	14	173.5000		173.5000		A
<b>9. Prepared By (Resource Unit Leader)</b>			<b>Approved By (Planning Section Chief)</b>		<b>Date</b>	<b>Time</b>
MARGE HUTCHINSON			JILL JOHNSON		09/02/2023	1203

**Division/Group Assignment List (ICS 204 WF)**  
**Controlled Unclassified Information//Basic**

<b>1. Incident Name:</b>			<b>3.</b>			
DINNER, GRIZZLY & BRICE CREEK FIRES			<b>Branch:</b>		<b>Division/Group</b>	
<b>2. Operational Period: DAY</b>					<b>A</b>	
Date/Time From: 09/03/2023 0700      SUN		Date/Time To: 09/03/2023 1900      SUN				
<b>4. Operations Personnel</b>						
<b>OPERATIONS CHIEF</b>		KURT RANTA CODY ACORD (T)		<b>SAFETY OFFICERS</b>		TROY CORN JACK CATES; TAIJA CORSO
<b>BRANCH DIRECTOR</b>				<b>DIVISION/GROUP SUPERVISOR</b>		KEN FOSS NICK WIGLE, (T)
<b>5. Resources Assigned this Period</b>						
Strike Team / Task Force / Resource Designator		LWD	Leader	Number Persons	Drop Off PT./Time	Pick Up PT./Time
<b>6. Control Operations/Work Assignments:</b>						
<p>TASK: Hold, secure, and mop up control lines. Identify unburnt pockets of fuel. Scout proposed alternate and contingency lines.  PURPOSE: Prevent fire from impacting values at risk including: communities to the west, commercial timberlands and T &amp; E habitat.  END STATE: Fire is kept north of the 22 Road, south of the 2216 Road, and east of 732 Road, to protect the values at risk through the remainder of the fire season.</p>						
<b>7. Special Instructions:</b>						
For this DIV - add BRICE CREEK FIRE to all CTRs & Shift tickets						
<b>8. Division/Group Communication Summary</b>						
Function	Channel	RX Frequency N/W	RX Tone/NAC	TX Frequency N/W	TX Tone/NAC	Mode
TACTICAL	1	168.0500	100.0	168.0500	100.0	A
COMMAND	7	170.0625	100.0	162.4375	100.0	A
AIR TO GROUND	13	165.9875		165.9875		A
AIR TO GROUND	14	173.5000		173.5000		A
<b>9. Prepared By (Resource Unit Leader)</b>			<b>Approved By (Planning Section Chief)</b>		<b>Date</b>	<b>Time</b>
MARGE HUTCHINSON			JILL JOHNSON		09/02/2023	1203

**Division/Group Assignment List (ICS 204 WF)**  
**Controlled Unclassified Information//Basic**

<b>1. Incident Name:</b>				<b>3.</b>		
DINNER, GRIZZLY & BRICE CREEK FIRES				<b>Branch:</b>	<b>Division/Group</b>  <b>C</b>	
<b>2. Operational Period: DAY</b>						
Date/Time From: 09/03/2023 0700      SUN		Date/Time To: 09/03/2023 1900      SUN				
<b>4. Operations Personnel</b>						
<b>OPERATIONS CHIEF</b>		KURT RANTA CODY ACORD (T)		<b>SAFETY OFFICERS</b>		TROY CORN JACK CATES; TAIJA CORSO
<b>BRANCH DIRECTOR</b>				<b>DIVISION/GROUP SUPERVISOR</b>		IAN MCCORD JON ELLIS (T)
<b>5. Resources Assigned this Period</b>						
Strike Team / Task Force / Resource Designator	LWD	Leader	Number Persons	Drop Off PT./Time	Pick Up PT./Time	
O-1.32 SOF2	09/12	PAUL BRNA	1	SHARPS CREEK BASE CAMP/0700	SHARPS CREEK BASE CAMP/1900	
O-2 FMOD	09/10	MARTIN PICKLE	2	SHARPS CREEK BASE CAMP/0700	SHARPS CREEK BASE CAMP/1900	
O-45 FELB	09/10	BEN JONGEWARD	1	SHARPS CREEK BASE CAMP/0700	SHARPS CREEK BASE CAMP/1900	
C-9 CRW1 - PRESCOTT IHC	09/11	DARIN FISHER	23	SHARPS CREEK BASE CAMP/0700	SHARPS CREEK BASE CAMP/1900	
C-12 CRW1 - SILVER STATE IHC	09/08	KEVIN KELLY	22	SHARPS CREEK BASE CAMP/0700	SHARPS CREEK BASE CAMP/1900	
C-8 CRW2 WEST COAST REFOREST CREW -1	09/11	HOMER HERNANDEZ	20	SHARPS CREEK BASE CAMP/0700	SHARPS CREEK BASE CAMP/1900	
C-13 T2IA GREYBACK 13B	09/09	CAMDEN RHIEHART	20	SHARPS CREEK BASE CAMP/0700	SHARPS CREEK BASE CAMP/1900	
E-16 ENG6 FWF ENG 654	09/05	MIKE GRAHAM	4	SHARPS CREEK BASE CAMP/0700	SHARPS CREEK BASE CAMP/1900	
E-11 ENG6 BIG BEAR LOGGING	09/14	MIKE HOPKINS	3	SHARPS CREEK BASE CAMP/0700	SHARPS CREEK BASE CAMP/1900	
E-41 ENG4 METHOW RIVER WILD FIRE	09/13	JORDI HERNANDEZ	3	SHARPS CREEK BASE CAMP/0700	SHARPS CREEK BASE CAMP/1900	
E-44 ENG4 HI COUNTRY	09/14	TARYN THOMAS	3	SHARPS CREEK BASE CAMP/0700	SHARPS CREEK BASE CAMP/1900	
E-68 ENG6 OVERWATCH ENTERPRISE	09/14	STEVEN ROBERTSON	2	SHARPS CREEK BASE CAMP/0700	SHARPS CREEK BASE CAMP/1900	
E-2 WTS2 RHXDEM	09/10	RUSSEL ROBISON	1	SHARPS CREEK BASE CAMP/0700	SHARPS CREEK BASE CAMP/1900	
O-86 MEDIC TEAM 20 - ADVENTURE MEDIC	09/14	SAM NAKANISHI	2	SHARPS CREEK BASE CAMP/0700	SHARPS CREEK BASE CAMP/1900	
<b>8. Division/Group Communication Summary</b>						
Function	Channel	RX Frequency N/W	RX Tone/NAC	TX Frequency N/W	TX Tone/NAC	Mode
TACTICAL	2	168.2000	100.0	168.2000	100.0	A
COMMAND	7	170.0625	100.0	162.4375	100.0	A
AIR TO GROUND	13	165.9875		165.9875		A
AIR TO GROUND	14	173.5000		173.5000		A
<b>9. Prepared By (Resource Unit Leader)</b>			<b>Approved By (Planning Section Chief)</b>		<b>Date</b>	<b>Time</b>
MARGE HUTCHINSON			JILL JOHNSON		09/02/2023	1203



**Division/Group Assignment List (ICS 204 WF)**  
**Controlled Unclassified Information//Basic**

<b>1. Incident Name:</b>			<b>3.</b>			
DINNER, GRIZZLY & BRICE CREEK FIRES			<b>Branch:</b>		<b>Division/Group</b>	
<b>2. Operational Period: DAY</b>					<b>C</b>	
Date/Time From: 09/03/2023 0700      SUN		Date/Time To: 09/03/2023 1900      SUN				
<b>4. Operations Personnel</b>						
<b>OPERATIONS CHIEF</b>		KURT RANTA CODY ACORD (T)		<b>SAFETY OFFICERS</b>		TROY CORN JACK CATES; TAIJA CORSO
<b>BRANCH DIRECTOR</b>				<b>DIVISION/GROUP SUPERVISOR</b>		IAN MCCORD JON ELLIS (T)
<b>5. Resources Assigned this Period</b>						
Strike Team / Task Force / Resource Designator		LWD	Leader	Number Persons	Drop Off PT./Time	Pick Up PT./Time
<b>6. Control Operations/Work Assignments:</b>						
<p>TASK: Construct direct and indirect fireline and secure perimeter.  PURPOSE: Prevent fire from impacting values at risk including: communities to the west, commercial timberlands and T &amp; E habitat  END STATE: Fire is kept north of the 22 Road, south of the 2216 Road, and east of 732 Road, to protect the values at risk through the remainder of the fire season.</p>						
<b>7. Special Instructions:</b>						
For this DIV - add BRICE CREEK FIRE to all CTRs & Shift tickets						
<b>8. Division/Group Communication Summary</b>						
Function	Channel	RX Frequency N/W	RX Tone/NAC	TX Frequency N/W	TX Tone/NAC	Mode
TACTICAL	2	168.2000	100.0	168.2000	100.0	A
COMMAND	7	170.0625	100.0	162.4375	100.0	A
AIR TO GROUND	13	165.9875		165.9875		A
AIR TO GROUND	14	173.5000		173.5000		A
<b>9. Prepared By (Resource Unit Leader)</b>			<b>Approved By (Planning Section Chief)</b>		<b>Date</b>	<b>Time</b>
MARGE HUTCHINSON			JILL JOHNSON		09/02/2023	1203

**Division/Group Assignment List (ICS 204 WF)**  
**Controlled Unclassified Information//Basic**

<b>1. Incident Name:</b>				<b>3.</b>		
DINNER, GRIZZLY & BRICE CREEK FIRES				<b>Branch:</b>		<b>Division/Group</b>
<b>2. Operational Period: DAY</b>				<b>D</b>		
Date/Time From: 09/03/2023 0700      SUN		Date/Time To: 09/03/2023 1900      SUN				
<b>4. Operations Personnel</b>						
<b>OPERATIONS CHIEF</b>		KURT RANTA CODY ACORD (T)		<b>BRANCH DIRECTOR</b>		
<b>SAFETY OFFICERS</b>		TROY CORN JACK CATES; TAIJA CORSO		<b>DIVISION/GROUP SUPERVISOR</b>		JEFF LUCAS CARSON ZEPP (T)
<b>5. Resources Assigned this Period</b>						
Strike Team / Task Force / Resource Designator		LWD	Leader	Number Persons	Drop Off PT./Time	Pick Up PT./Time
O-1.32 SOF2		09/12	PAUL BRNA	1	SHARPS CREEK BASE CAMP/0700	SHARPS CREEK BASE CAMP/1900
O- FELB (T)			CHRIS GONZALES	1	SHARPS CREEK BASE CAMP/0700	SHARPS CREEK BASE CAMP/1900
O-1 FMOD S5 LANDSERVICES		09/10	BRYER ZIMMERMAN	2	SHARPS CREEK BASE CAMP/0700	SHARPS CREEK BASE CAMP/1900
O-1 FMOD A & C CUTTING		09/09	ELIJAH	2	SHARPS CREEK BASE CAMP/0700	SHARPS CREEK BASE CAMP/1900
O-21 FMOD TIMBER TIPPERS		09/12	ZELLER	2	SHARPS CREEK BASE CAMP/0700	SHARPS CREEK BASE CAMP/1900
C-7 CRW1 BITTERROOT IHC		09/11	CACHE V GIBBONS	22	SHARPS CREEK BASE CAMP/0700	SHARPS CREEK BASE CAMP/1900
C-10 CR21 ALTA PACIFIC CREW 5		09/11	LEO TORRES	20	SHARPS CREEK BASE CAMP/0700	SHARPS CREEK BASE CAMP/1900
C-11 CRW2 LAVA RIVER CREW 1		09/11	RAUL GUZMAN	20	SHARPS CREEK BASE CAMP/0700	SHARPS CREEK BASE CAMP/1900
C-4 T2IA LAVA RIVER FORESTRY CREW - 5		09/12	JESUS RUIZ	20	SHARPS CREEK BASE CAMP/0700	SHARPS CREEK BASE CAMP/1900
C-5 T2IA LOST RIVER		09/09	AARON VASILIS	20	SHARPS CREEK BASE CAMP/0700	SHARPS CREEK BASE CAMP/1900
E-9 ENG6 GRAYBACK FORESTRY ENG 37		09/15	WILLIAM MILLER	3	SHARPS CREEK BASE CAMP/0700	SHARPS CREEK BASE CAMP/1900
E-42 ENG4 METHOW RIVER WILD FIRE		09/13	CINDY GAMEROS	3	SHARPS CREEK BASE CAMP/0700	SHARPS CREEK BASE CAMP/1900
E-2 WTS2 HILLSIDE FIRE		09/12	TRACI CAROTHERS	1	SHARPS CREEK BASE CAMP/0700	SHARPS CREEK BASE CAMP/1900
E-3 WTS2 ALLIEID WATERS		09/11	MATT WAXLER	1	SHARPS CREEK BASE CAMP/0700	SHARPS CREEK BASE CAMP/1900
E-1 DZR4 SUTPHIN TRUCKING		09/10	LEVI SUTPHIN	2	SHARPS CREEK BASE CAMP/0700	SHARPS CREEK BASE CAMP/1900
O-29 REMS 11 - BEYOND THE EDGE			JOE DECKER	4	SHARPS CREEK BASE CAMP/0700	SHARPS CREEK BASE CAMP/1900
<b>8. Division/Group Communication Summary</b>						
Function	Channel	RX Frequency N/W	RX Tone/NAC	TX Frequency N/W	TX Tone/NAC	Mode
TACTICAL	3	168.6000	100.0	168.6000	100.0	A
COMMAND	7	170.0625	100.0	162.4375	100.0	A
AIR TO GROUND	13	165.9875		165.9875		A
AIR TO GROUND	14	173.5000		173.5000		A
<b>9. Prepared By (Resource Unit Leader)</b>			<b>Approved By (Planning Section Chief)</b>		<b>Date</b>	<b>Time</b>
MARGE HUTCHINSON			JILL JOHNSON		09/02/2023	1203

**Division/Group Assignment List (ICS 204 WF)**  
**Controlled Unclassified Information//Basic**

<b>1. Incident Name:</b>				<b>3.</b>		
DINNER, GRIZZLY & BRICE CREEK FIRES				<b>Branch:</b>	<b>Division/Group</b>  <b>D</b>	
<b>2. Operational Period: DAY</b>						
Date/Time From: 09/03/2023 0700      SUN		Date/Time To: 09/03/2023 1900      SUN				
<b>4. Operations Personnel</b>						
<b>OPERATIONS CHIEF</b>		KURT RANTA CODY ACORD (T)		<b>BRANCH DIRECTOR</b>		
<b>SAFETY OFFICERS</b>		TROY CORN JACK CATES; TAIJA CORSO		<b>DIVISION/GROUP SUPERVISOR</b>		JEFF LUCAS CARSON ZEPP (T)
<b>5. Resources Assigned this Period</b>						
Strike Team / Task Force / Resource Designator		LWD	Leader	Number Persons	Drop Off PT./Time	Pick Up PT./Time
O-87 MEDIC TEAM 21 SPEARHEAD MEDICS		09/16	BRENNEN HILL	2	SHARPS CREEK BASE CAMP/0700	SHARPS CREEK BASE CAMP/1900
E-3 AMBU 2 TRI COUNTY AMBULANCE SERVICE			ZACHTROMP	2	SHARPS CREEK BASE CAMP/0700	SHARPS CREEK BASE CAMP/1900
O- REAF		09/09	CHASE STREET	1	SHARPS CREEK BASE CAMP/0700	SHARPS CREEK BASE CAMP/1900
<b>6. Control Operations/Work Assignments:</b>						
<p>TASK: Construct direct and indirect fireline and secure perimeter.  PURPOSE: Prevent fire from impacting values at risk including: communities to the west, commercial timberlands and T &amp; E habitat  END STATE: Fire is kept north of the 1745 Road and south of the 1746 Road to protect the values at risk through the remainder of the fire season.</p>						
<b>7. Special Instructions:</b>						
<p>For this DIV - add DINNER FIRE to all CTRs &amp; Shift tickets</p> <p>Chloeta Insurance Contract Engine will be doing structure protection / prep in the area of Row River Road / Brice Creek Road at the following 5 residences:  39440 &amp; 39618 Row River Road / 39910, 40186, &amp; 40297 Brice Creek Rd. Lead is JR Olson at 509-668-6437. Resource will attend morning Briefings and check in with divisions when entering fire area.</p>						
<b>8. Division/Group Communication Summary</b>						
Function	Channel	RX Frequency N/W	RX Tone/NAC	TX Frequency N/W	TX Tone/NAC	Mode
TACTICAL	3	168.6000	100.0	168.6000	100.0	A
COMMAND	7	170.0625	100.0	162.4375	100.0	A
AIR TO GROUND	13	165.9875		165.9875		A
AIR TO GROUND	14	173.5000		173.5000		A
<b>9. Prepared By (Resource Unit Leader)</b>			<b>Approved By (Planning Section Chief)</b>		<b>Date</b>	<b>Time</b>
MARGE HUTCHINSON			JILL JOHNSON		09/02/2023	1203

<b>AIR OPERATIONS SUMMARY 220</b>		Prepared/Approved: Paul Balfour	Prepared: 9/02/2023	Prepared Time: 1600 hrs.		
<b>1. INCIDENT NAME:</b> DINNER/GRIZZLY/BRICE CREEK		<b>2. OPERATIONAL PERIOD</b> 09/03/2023	<b>START TIME:</b> 0700	<b>END TIME:</b> 1900	<b>SUNRISE:</b> 0637	<b>SUNSET:</b> 1944

<b>3. REMARKS</b> (Safety Notes, Hazards, Air Operations Special Equipment, etc.).  <p style="text-align: center;"><b>WATCH OUTS</b></p> <p style="text-align: center;"><b>Smoky conditions * Steep terrain * Shadow effects</b></p> <p>Avoid foam within 300' of waterways or bodies of water. Notify AOBD if this is not achieved.</p> <p style="text-align: center;"><b>Aircraft costs daily to: bal4@pauljbalfour.com</b></p>		<b>4. READY ALERT AIRCRAFT:</b> N38HX Shorthaul @ Sunriver ORNG Medivac: Roseburg Order through RICC See Medical Plan, last page of IAP	<b>5.TFR: #3/2352 (A-2)</b> Freq 121.3750 Operational 1500-0400 UTC
---	--	---	---

6. PERSONNEL			7. FREQUENCIES			8. FIXED-WING Avail/ Type/ Make-Model/ N#/ Base
NAME	PHONE #		AM	FM		
Helibase			A/A TFR and Primary	121.3750	<b>AIRTANKERS: ORDER THRU ATGS</b>  <b>ATGS – order through Roseburg Dispatch</b>  <b>Landing Sites on Fire: See pilot map</b> Lying Cr Helispot: 43°42.698'N X 122°42.114'W 1224ft Cottage Grove: 43°48.246'N X 123°1.923'W 641ft  <p style="text-align: center;">Tank Dips</p>	
AOBD	Paul Balfour	509-993-8739	A/A Secondary (A-1)	127.0750		
ASGS			A/A Tertiary (A-3)	123.9250		
ASGS(t)			A/G Primary (A-4)	165.9875		
ATGS			A/G Secondary (A-5)	173.5000		
HEBM			Deck (A-			
HEBM(t)			TOLC (A-			
ORRIC	Aircraft Desk	541-957-3325	IA A/G White ODF			
UAO	Jim Dotson	307-413-2024	IA A/G 49 USFS	168.0375		
Willy Acton UAO: 208-507-0942 73H Michael Wales 813-326-2469 9FF Joe Bradshaw 775-271-9284			VMED29	Rx/Tx 155.3475 rx/tx tn156.7		
			CTAF	122.8		
			Air Guard	168.6250 tx tn110.9		

FAA N#	T Y	MAKE/ MODEL	BASE	START	AVAIL	REMARKS	FAA N#	T Y	MAKE/ MODEL	BASE	START	AVAIL	REMARKS
N2773H (A14)	2	205 A1 ++	Cottage	0800	0900	4 personnel	N519FF (A-6)	3	AS 350	Cottage	0800	0900	6 personnel

# INCIDENT RADIO COMMUNICATIONS PLAN (ICS 205)

Controlled Unclassified Information//Basic

<b>1. Incident Name:</b>	<b>2. Date/Time Prepared:</b>	<b>3. Operational Period: DAY</b>	
DINNER, GRIZZLY & BRICE CREEK FIRES	Date: 09/02/2023 Time: 1203	Date/Time From: 09/03/2023 0700      SUN	Date/Time To: 09/03/2023 1900      SUN

**4. Basic Radio Channel Use:**

Zone Group	Ch #	Function	Channel Name/Trunked Radio System Talkgroup	Assignment	RX Freq	RX Tone/NAC	TX Freq	TX Tone/NAC	Mode (A,D, or M)	Remarks
	1	TACTICAL	TAC 1	DIV A	168.0500	100.0	168.0500	100.0	A	BRICE FIRE
	2	TACTICAL	TAC 2	DIV C	168.2000	100.0	168.2000	100.0	A	BRICE FIRE
	3	TACTICAL	TAC 3	DIV D	168.6000	100.0	168.6000	100.0	A	DINNER FIRE
	4	TACTICAL	TAC 4	DIV S	166.7250	100.0	166.7250	100.0	A	GRIZZLY FIRE
	5	TACTICAL	TAC 5	DIV Z	166.7750	100.0	166.7750	100.0	A	GRIZZLY FIRE
	6	TACTICAL	TAC 6	STRUCTURE GROUP	168.2500	100.0	168.2500	100.0	A	GRIZZLY FIRE
	7	COMMAND	CMD 7	ALL DIVS	170.0625	100.0	162.4375	100.0	A	FAIRVIEW LO
	8	COMMAND	CMD 8	NONE	169.6125	100.0	162.5125	100.0	A	RESERVED-NOT IN SERVICE
	10	COMMAND	FAIRVIEW	IA LOCAL DISPATCH	170.5500	103.5	164.8000	173.8	A	ROSEBURG
	11	TACTICAL	OFD RED	IA ONLY	151.3400	156.7	151.3400	156.7	A	
	12	AIR TO GROUND	A/G 49	IA ONLY	168.0375		168.0375		A	
	13	AIR TO GROUND	A/G PRI	ALL FIRES	165.9875		165.9875		A	
	14	AIR TO GROUND	A/G SEC	ALL FIRES	173.5000		173.5000		A	
	15	AIR TO GROUND	VMED 29	MEDICAL EVAC ONLY	155.3475	156.7	155.3475	156.7	A	
	16	AIR GUARD	AIRGUARD	EMER AIR OPS ONLY	168.6250		168.6250	110.9	A	

**5. Special Instructions:** COMMUNICATIONS CELL LINE 208-891-8093

<b>6. Prepared By</b> (Communications Unit Leader)	Name: MISSY PARKER,COML	Signature: <i>Missy Parker</i>
ICS 205	IAP Page	Date/Time: 09/02/2023 1203

# RESOURCE ADVISOR MESSAGE



Cottage Grove has a rich mining history and many of these activities are still on the landscape. Adits (horizontal), shafts (vertical), and small pits can still be encountered in the forest. Although many of these have been closed or covered, there may be unknown mines out there. These features can contain poisonous air, deep pools of water, and the constant risk of cave ins. If you come across these, stay out, flag nearby, take GPS points, and bring to SITL so the hazards can be shared. Avoid working in unknown ground at night when you might not see adits as readily.



**Demob List for Sunday 09/03/2023  
Dinner Fire**

EQUIPMENT			
E-15	0730	(ENG4)	DIAMOND ROAD MAINTENANCE

\*\*\*\*\*

**No Demobs Scheduled for Monday 9/4/2023**

\*\*\*\*\*

**No Demobs Scheduled for Tuesday 09/05/2023**

\*\*\*\*\*

**Demob List for Wednesday 09/06/2023  
Brice Creek Fire**

EQUIPMENT			
E-16	0700	(ENG6)	CHILOQUIN RD 654



# Virtual Demob Instructions

## DAY BEFORE YOUR DEMOB

Contact FINANCE 24 hours to advise departure, turn in any outstanding CTR/Shift Tickets. Make sure they are SIGNED. Confirm there are no missing financial documentation.

## ANY OR ALL OF THE STEPS CAN BE COMPLETED THE NIGHT BEFORE TO SPEED UP THE DEMOB PROCESS

### DAY OF DEMOB – STEP 1

Contact Demob at 509-432-6143 to determine your specific next steps since we are pre-clearing resources that do not have any supplies or communications equipment checked out. Honor you assigned Demob time as best as you can.

### STEP 2 (When Set Up)

All line resources that went off-road must go through the weed wash (see IAP for locations) after your last shift. Weed wash station staff should give you a ticket after completion.

### STEP 3 (If directed by Demob)

GROUND SUPPORT – Return incident rental vehicles; ALL contractors need inspection. SUPPLY – Return issued gear and leftover supplies.  
COMMUNICATIONS – Return any communications equipment.  
SITUATION UNIT – Return any issued I-Pad or GPS devices.

### STEP 4

Proceed to FINANCE to complete closeout process, review/sign OF-288.

### STEP 5

Proceed to CHECK-IN to turn in any Unit Logs or Evaluation documentation. Contact the Training Specialist if needed.

### STEP 6

Once steps 1-6 are complete, finish the Demob process by calling 509-432-6143 with departure time, final destination and destination arrival time.

## ALL AIR TRAVELERS

Submit your request 72 hours prior to flight date through the QR Code on the IAP Cover. Call 509-432-6143 for any questions or assistance.

## NIGHT SHIFT PERSONNEL

All night shift personnel coming off the line will be required to meet work/rest requirements before starting the Demob process.

## EXTENSIONS AND CREW SWAPS

All extension and crew swap processes should be done at least 48 hours before your last working day to help facilitate Operational resources and the Demob process.





# Human Resource Message

September 3, 2023



## Conduct and Behavior

**Incident Objectives include treating each other with dignity and respect and acting in a professional manner while on the fire and in the community.**

**Incidents can become very much like a community and many times, after the camp is set up, it can be the second or third largest town in a county. And just as in any small town, problems with people's conduct and behavior can arise.**

**Unlike your normal workplace, on incident assignments the incident management team and the incident agency have something to say about your behavior, even when you are off duty. Your off-duty conduct comes under incident management and agency control when it:**

- **Impairs, or may impair, your performance or the performance of others.**
- **Results, or may result, in an accident or injury.**
- **Results, or may result, in damage to property.**
- **Disrupts, or may disrupt, incident routine.**
- **Infringes, or may infringe, on the rights of others.**
- **Jeopardizes, or may jeopardize, incident operation.**



**HR messages are intended to inform and to remind people of agency policy, law, civil rights, and appropriate vs inappropriate behavior while assigned to a fire.**

**We all must make choices in life—even on incident assignments. Knowing the rules and expectations before you face situations will help you make the right choices.**

**It all boils down to doing what is right in any situation and maintaining professionalism when on and off duty.**

**Contact Information - Human Resource Specialist: Susie Manezes  
Cell Phone: 602-571-9327  
Email: [smanezes@blm.gov](mailto:smanezes@blm.gov)**

# Logistics Message

Dinner, Grizzly, Brice Creek Fires

## Sharps Creek Base Camp

- **Supply Hours** 0600 to 2100 hours
  - All NFES orders are routed through supply. Direct General Messages to Supply or through Communications. Allow 24 to 48 hours for delivery due to the amount of activity in the state.
- **Ground Support** 0600 to 2100 hours
- **Shower Hours** 0430 to 1200 and 1500 to 2230 hours
- **Kitchen Hours** (Starting 9/1 for dinner service)
  - Breakfast 0500 to 0900
  - Dinner 1700 to 2200
- **Lunches and Ice** - available at the refer trailer.

**Any meal deliveries to the line require a 24-hour notice.**

**Crews delayed returning back to camp will need a 4-hour notice to arrange meals.**



# Finance Message



Finance Email: [2023.dinner.finance@firenet.gov](mailto:2023.dinner.finance@firenet.gov)

SUBJECT: *Include Key Word* **TIME** for Overhead, Crews & Cooperators

SUBJECT: *Include Key Word* **EQUIPMENT** for Contract Resources

Temporary Finance Phone: 509-423-6011

**FINANCE CHECK IN:** [2023.dinner.finance@firenet.gov](mailto:2023.dinner.finance@firenet.gov)

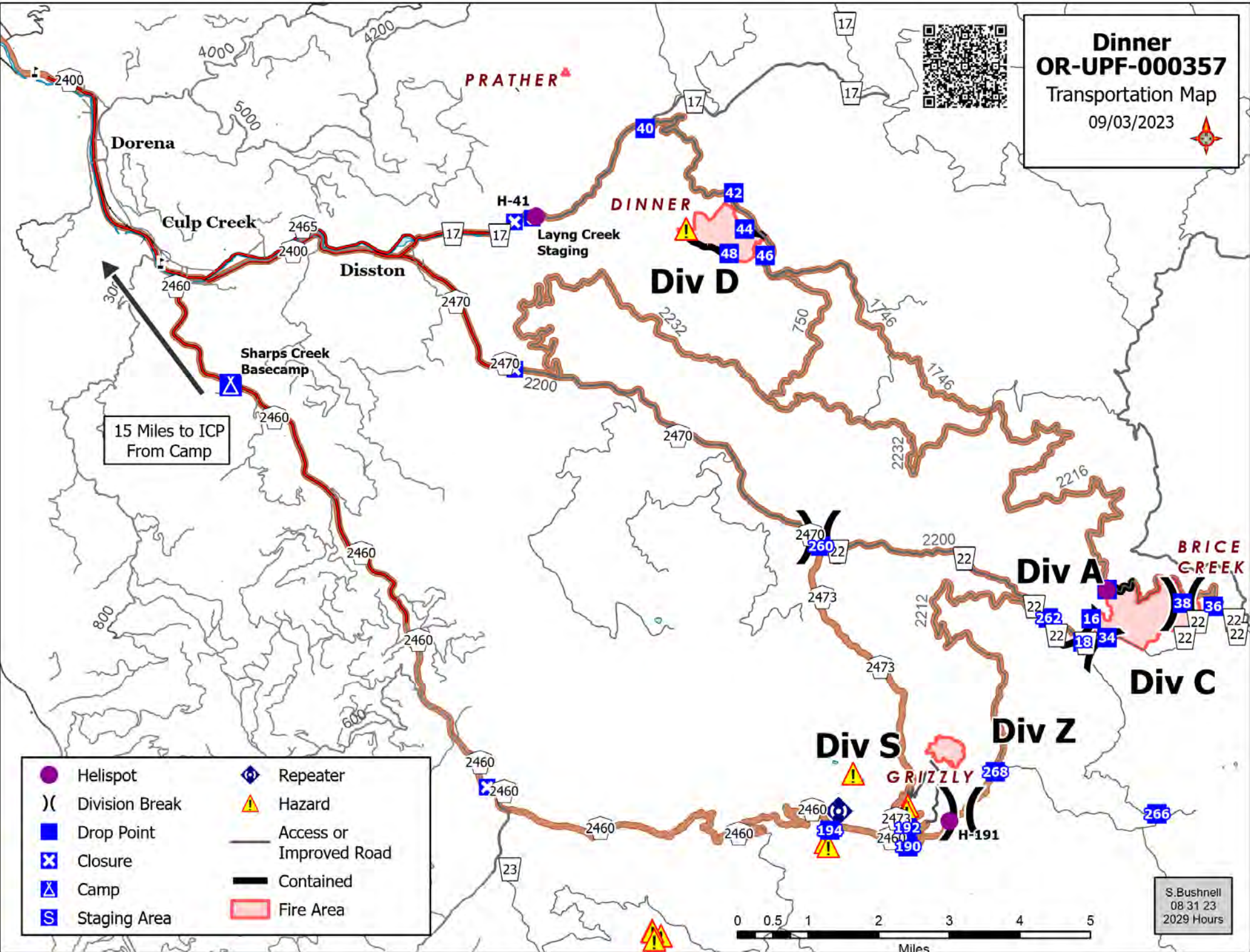
PLEASE ENSURE THE DOCUMENTS LISTED BELOW ARE EMAILED

Overhead, Crews & Cooperator Resources	Contract Resources
<ul style="list-style-type: none"> <li>• <b>Check-In:</b> Crew Manifest, Cooperative Agreement (if applies), AD Hire Letter, Resource Order</li> <li>• <b>Daily:</b> Crew Time Report (CTR), Shift Tickets</li> <li>• <b>Demob:</b> Signed OF288, Final Equipment Use Invoice (Cooperator). If you don't have a way to sign you must come to Finance.</li> </ul>	<ul style="list-style-type: none"> <li>• <b>Check-In:</b> Resource Order, Contract/VIPR Agreement (make sure you have your UEI, Pre-Inspection</li> <li>• <b>Daily:</b> Shift Tickets, receipts (fuel issues, claims, etc.)</li> <li>• <b>Demob:</b> Contractor Evaluations, Final Shift Tickets and receipt(s) for Addition/Deductions, Post-Inspection, Final Signed Invoices. If you don't have a way to sign you must come to Finance</li> </ul>

## REMINDERS

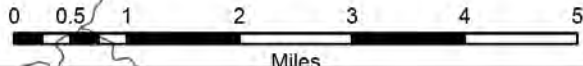
- ★ PLEASE ENSURE YOU INCLUDE LOCATION OF WHERE YOU ARE WORKING (DINNER, BRICE CREEK, GRIZZLY FIRE) ON THE CTR OR SHIFT TICKET. MAKE SURE O, C OR E # IS ON THE CTR OR SHIFT TICKET
- ★ PLEASE SHOW YOUR LUNCH BREAK
- ★ PLEASE USE MILITARY TIME (0001-2400)
- ★ WHEN CLAIMING HAZARD PAY YOU MUST INCLUDE THE SUPPRESSION ACTION BEING PERFORMED. THIS INCLUDES OPERATIONS WHICH DIRECTLY SUPPORT CONTROL OF FIRE (E.G., ACTIVITIES TO EXTINGUISH THE FIRE, FIREFIGHTING, GROUND SCOUTING, SPOT FIRE PATROLLING, SEARCH AND RESCUE OPERATIONS, AND BACKFIRING).

**Dinner**  
**OR-UPF-000357**  
 Transportation Map  
 09/03/2023



15 Miles to ICP  
From Camp

- |                |                         |
|----------------|-------------------------|
| Helispot       | Repeater                |
| Division Break | Hazard                  |
| Drop Point     | Access or Improved Road |
| Closure        | Contained               |
| Camp           | Fire Area               |
| Staging Area   |                         |



S. Bushnell  
 08 31 23  
 2029 Hours

# Dinner OR-UPF-000357 IAP Map

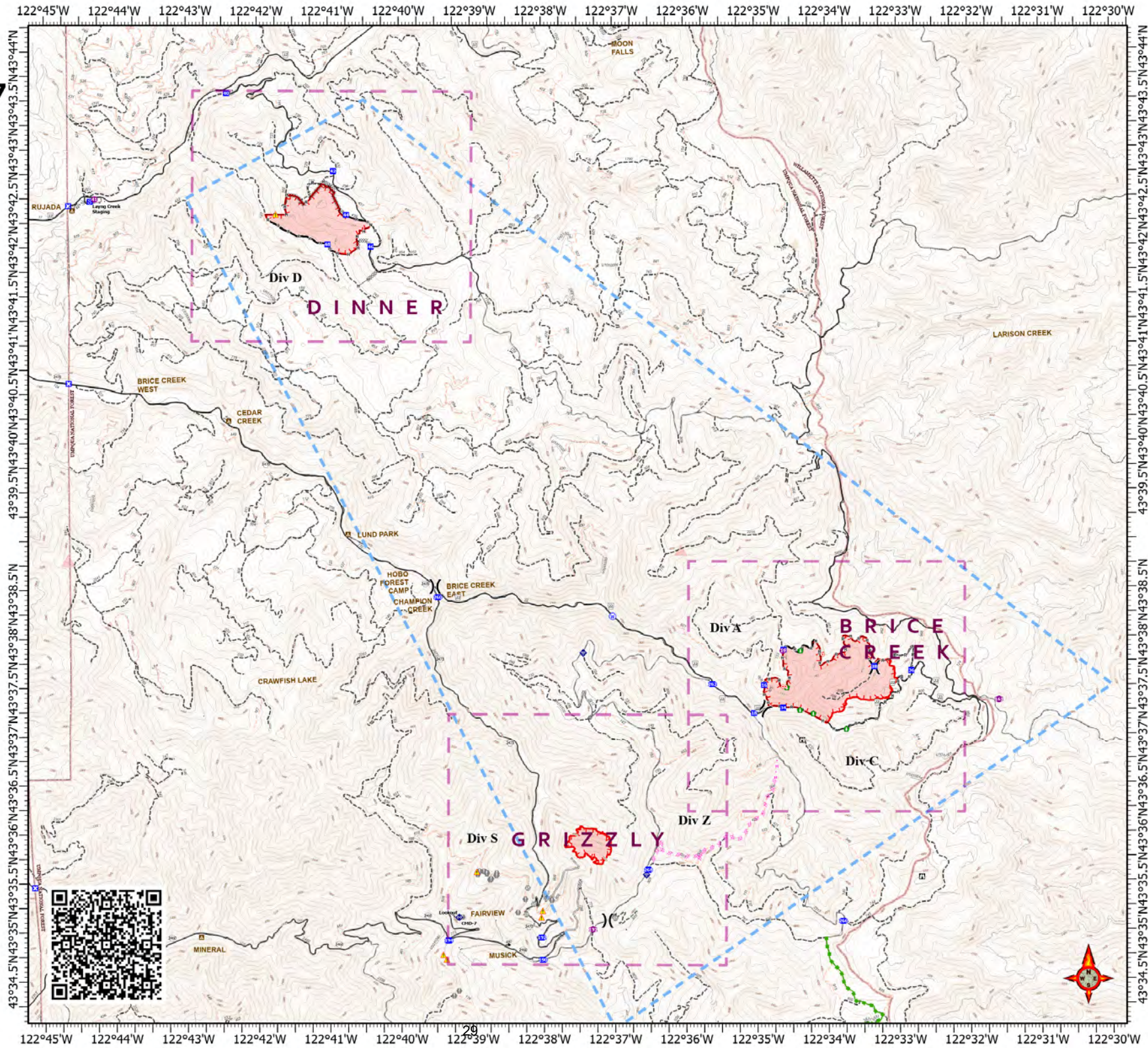
09/03/2023  
acres at

- Helispot
- Division Break
- Drop Point
- Closure
- Staging Area
- Lookout
- Hot Spot - Spot Fire
- Value at Risk
- Gate
- Hazard Tree
- Internet Access
- Repeater
- Hazard
- Water Source
- Campground
- Forest Service Facility
- Lookout - Permanent
- Completed Dozer Line
- Completed Hand Line
- Completed Road as Line
- Planned Dozer Line
- Planned Hand Line
- Access or Improved Road
- Other
- Escape Route
- Temporary Flight Restriction
- Contained
- Uncontained Fire Edge
- Paved Road
- Gravel Road, Suitable for Passenger Car
- Dirt Road, Suitable for Passenger Car
- Road Not Suitable for Passenger Car
- Closed Road
- No Oper Maint Level



S. Bushnell  
08 31 23  
2031 Hours

Acres from IR and GPS  
Datum: North American 1983

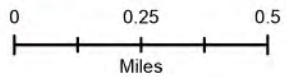


# Brice Creek OR-UPF-000359 IAP Map

09/03/2023

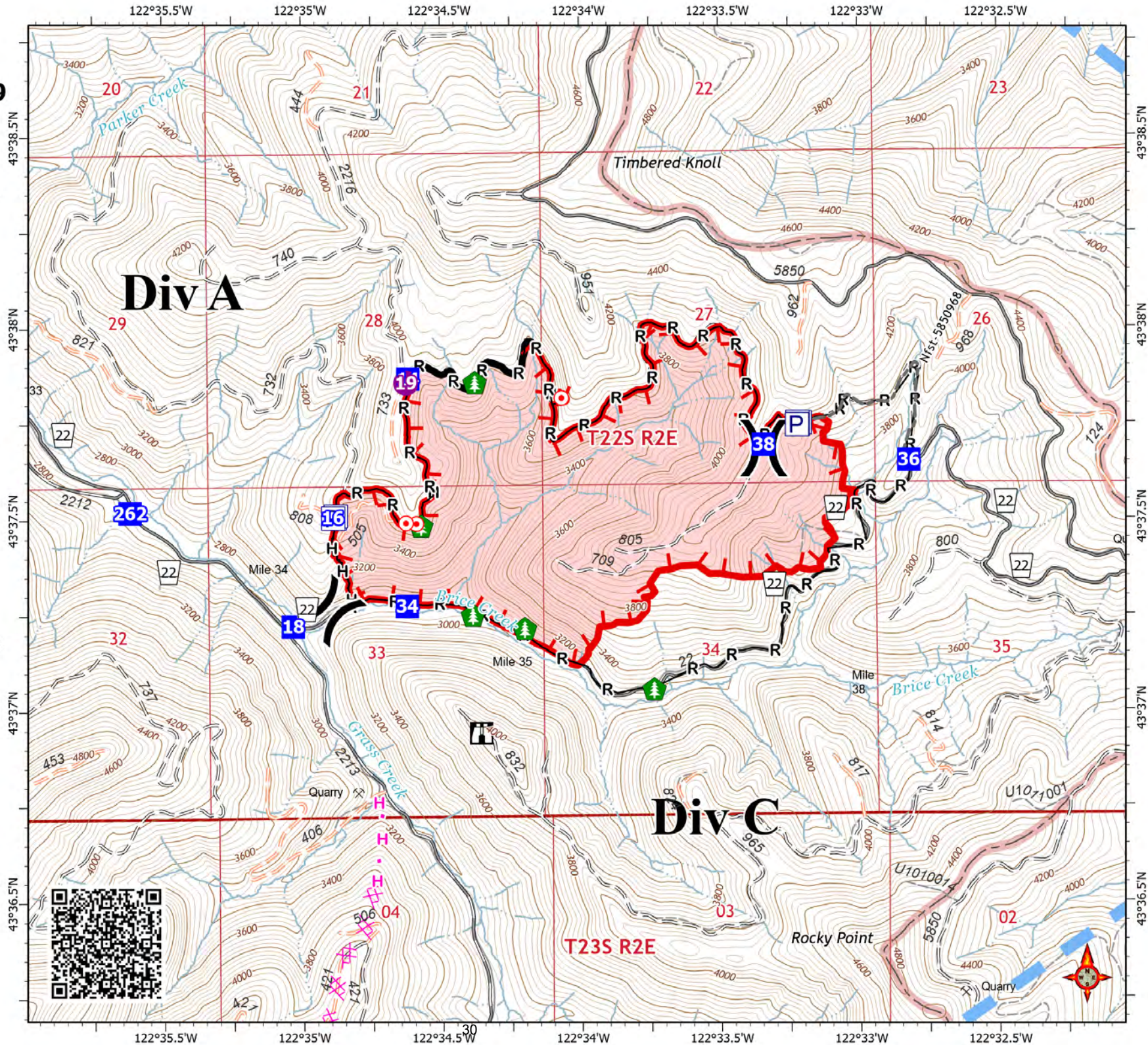
583 acres at 9/2/2023 17:51:00

- Pump
- Water Tank
- Helispot
- Division Break
- Drop Point
- Lookout
- Hot Spot - Spot Fire
- Hazard Tree
- Completed Hand Line
- Completed Road as Line
- Planned Dozer Line
- Planned Hand Line
- Other
- Temporary Flight Restriction
- Contained
- Uncontained Fire Edge
- Paved Road
- Gravel Road, Suitable for Passenger Car
- Road Not Suitable for Passenger Car
- Closed Road
- No Oper Maint Level
- Trail
- Fire Area



S. Bushnell  
08 31 23  
2029 Hours

Acres from IR and GPS  
Datum: North American 1983

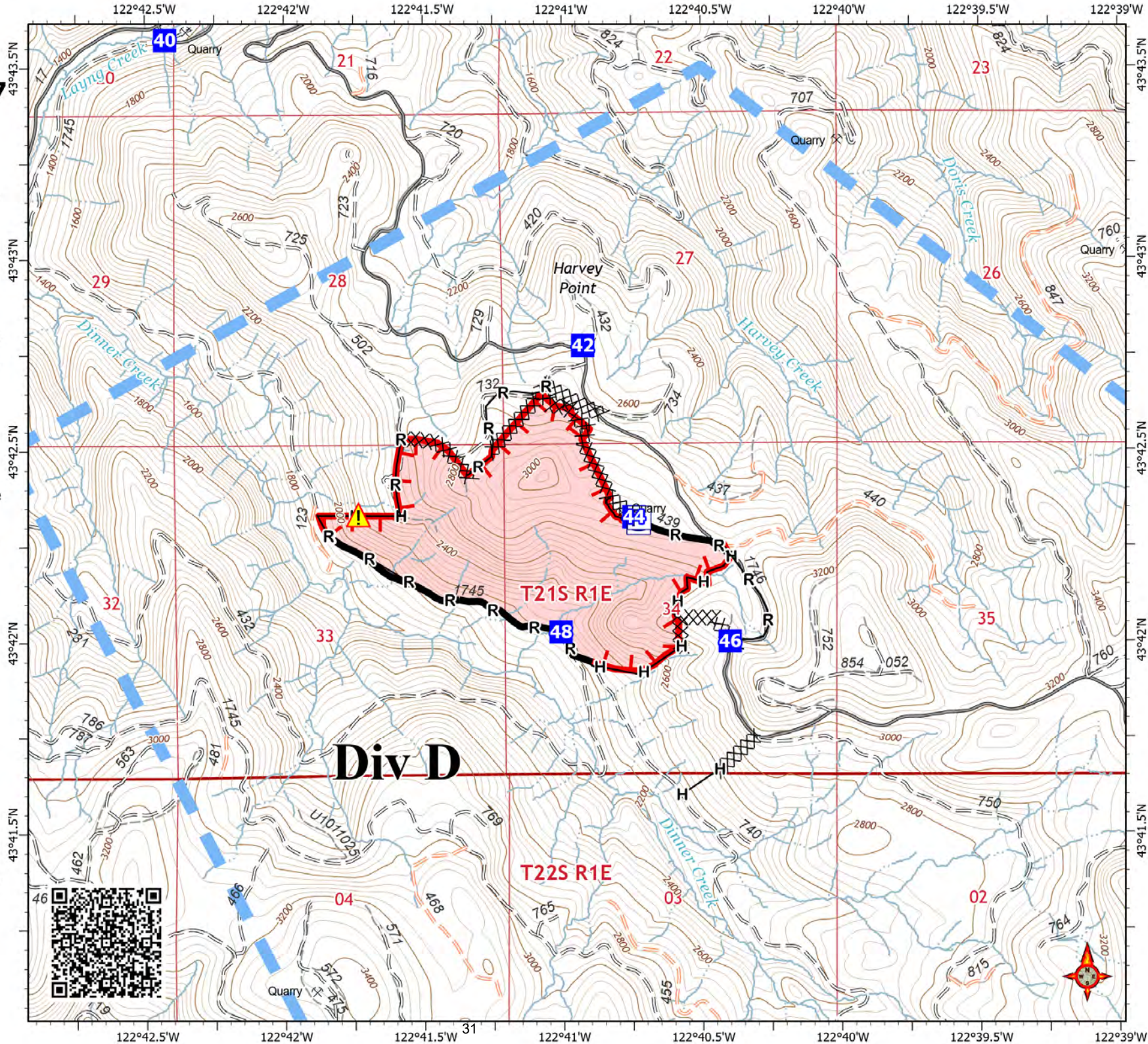


# Dinner OR-UPF-000357 IAP Map

09/03/2023

304 acres at 9/2/2023 14:30:00

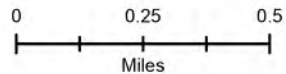
- Pump
- Water Tank
- Drop Point
- Hazard
- Completed Dozer Line
- Completed Hand Line
- Completed Road as Line
- Temporary Flight Restriction
- Contained
- Uncontained Fire Edge
- Paved Road
- Road Not Suitable for Passenger Car
- Closed Road
- No Oper Maint Level
- Trail
- Fire Area



## Div D

T21S R1E

T22S R1E



S. Bushnell  
08 31 23  
2030 Hours




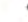
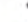





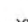



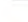






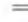


Acres from IR and GPS  
Datum: North American 1983

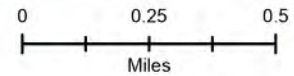


# Grizzly OR-UPF-000341 IAP Map

09/03/2023

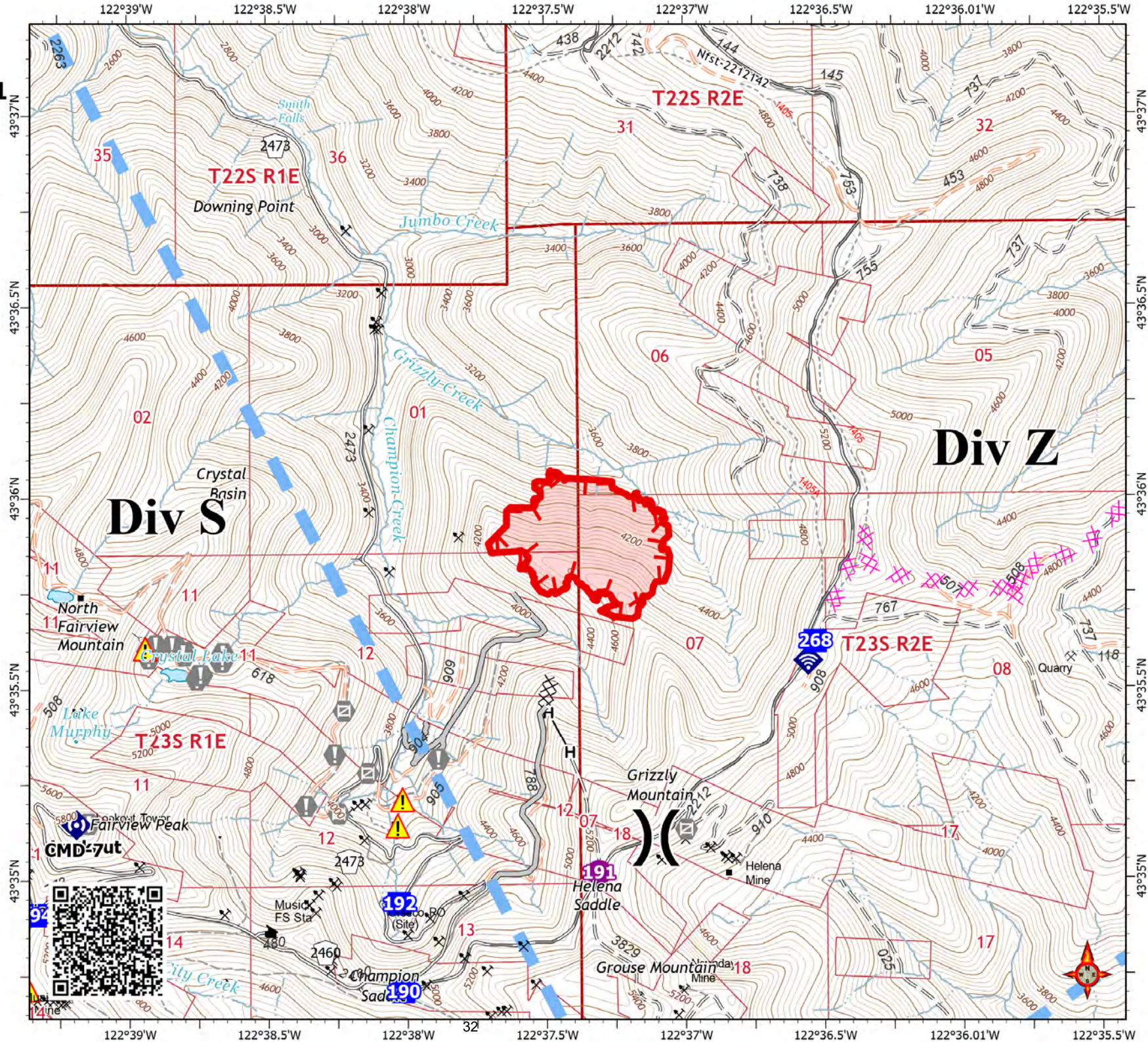
92 acres at 8/30/2023 22:02:00

-  Helispot
-  Division Break
-  Drop Point
-  Value at Risk
-  Gate
-  Internet Access
-  Repeater
-  Hazard
-  Structures
-  Forest Service Facility
-  Lookout - Permanent
-  Completed Dozer Line
-  Completed Hand Line
-  Planned Dozer Line
-  Access or Improved Road
-  Temporary Flight Restriction
-  Uncontained Fire Edge
-  Gravel Road, Suitable for Passenger Car
-  Dirt Road, Suitable for Passenger Car
-  Road Not Suitable for Passenger Car
-  Closed Road
-  No Oper Maint Level
-  Trail
-  Fire Area



S. Bushnell  
08 31 23  
2030 Hours

Acres from IR and GPS  
Datum: North American 1983









## **Sharps Creek Base Camp**

### In Camp Medical Procedure

#### **If Red or Yellow**

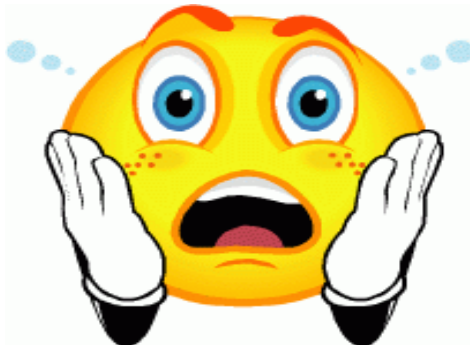
Yell for help and stay with patient

Provide first aid as appropriate

Contact Dinner Communications at **208-891-8093** or by radio

#### **If Green**

Go to camp medical tent for evaluate and treatment



# Public Information Message

**PHOTOS:** Your fireline photos help us build understanding with the public. Community members want to see what you see because you go where others can't safely go. We are looking for any pictures of the fire line, fire engines and equipment, mop-up work, and **fire resources working on the fire line in their PPE**. You can send photos to:

Email: 2023.dinner@firenet.gov

Text: 509-388-1475

As always, make sure you're wearing all your PPE and conveying a professional, caring, and respectful attitude toward the homes and land in this community. Thanks for helping us out!

**QUESTIONS FROM THE PUBLIC:** If community members have questions that you do not feel equipped to answer professionally, please give them our fire information line: (541) 900-5862.

# Liaison Message

Please click on the QR code and answer a few questions to be added to our Cooperators list. You will then be provided with a daily update and cooperators meeting invitation.





# EMERGENCY PLAN INCIDENT WITHIN AN INCIDENT

## ON SCENE INCIDENT COMMANDER

In the event of an accident or medical incident of any size, your primary responsibility is to ENSURE that the victim(s) receive prompt and effective Triage, Treatment, Extrication and Transport.

- **ENSURE THE MEDICAL INCIDENT REPORT IN THE INCIDENT ACTION PLAN IS BEING USED AND FOLLOWED- \*IF DETERMINED TO BE A GREEN, DO NOT DECLARE EMERGENCY TRAFFIC AND ONLY COMPLETE LINE 1-4 ON MIR\*.**
- Conduct size-up of the incident, including nature of accident, number type of resources involved, latitude and longitude location (DD° MMM.MM format). Notify incident communications center and supervisor. Request assistance as needed.
- Order and coordinate medical and support response to the accident.
- Evaluate special needs (law enforcement, haz mat, etc.).
- Clear the command frequency if medical emergency. Coordinate with incident communications and air attack for air medical transportation needs.
- Preserve and photograph the scene for accident investigation.
- Remain aware of surroundings and the status of the main incident (delegate personnel to monitor the main fire) to ensure safety of medical treatment personnel.
- Until relieved, supervise and manage all personnel involved at the incident scene.

## MEDICAL PLAN (ICS 206 WF)

Incident/Project Name				Operational Period				
<b>Dinner, Grizzly, Brice Creek Fires</b>				<b>9/03/2023 0700 - 1900</b>				
<b>Ambulance Services</b>								
Name		Complete Address		Phone		Advanced Life Support (ALS)		
						Yes	No	
South Lane Fire & Rescue		233 E Harrison Ave Cottage Grove, OR 97424		911		X		
Eugene Springfield Fire Dept		Multiple Stations Eugene & Springfield		911		X		
North Douglas County Fire & EMS		531 S Cedar St., Drain, OR 97435		911		X		
<b>Air Ambulance Services</b>								
Name		Phone		Capability				
Life Flight		Use VMED 29 air to ground		Critical Care Medic/RN Night Capable 100x100 LZ				
Oregon Army National Guard		Use VMED 29 air to ground Roseburg, OR		MEDIC Night Vision Capable				
Teton Short Haul		Use VMED 29 air to ground Sunriver, OR		EMT Daytime Use Only				
<b>Hospitals</b>								
Name Complete Address		Coordinate Standard Degrees Decimal Minutes DD° MM.MMM' N - Lat DD° MM.MMM' W - Long		Travel Time From ICP Air Gnd		Helipad Yes No		Level of Care Facility
Sacred Heart Medical Center (Riverbend) 3333 Riverbend, Drive Springfield, OR		Lat:	44°04.876' N	15 min	30 min	541-222-6931	X	Level 2
		Long:	123°01.588' W					
Legacy Emanuel 2801 N Gantenbien Portland, OR		Lat:	45°32.668' N	1hr	2hr	503-413-3121	X	Level 1 Trauma Burn Center
		Long:	122°40.293' W					
PeaceHealth Cottage Grove Community Medical Center 1515 Village Dr Cottage Grove, OR 97424		Lat:	43°48.2292' N	10 min	10 min	541-767-5500	X	Basic
		Long:	123°2.3801' W					
Division Branch Group	Capability			Personnel				
<b>Grizzly Fire S</b>	4X4 with ALS & Rope Rescue			REMS 10 (O-82) Jesse Bean				
<b>Grizzly Fire Z</b>	4x4 with ALS & Low Angle Rope Rescue ALS Ambulance ALS/EMPF			RAT (O-88) John Buchan Ambo 3 (E-1) Lonnie Camp Medic 30 (O-69) Stephen Wolfstich				
<b>Grizzly Fire Structure Group</b>				Utilize Nearby Resources				
<b>Brice Creek Fire Div A</b>	ALS Ambulance			Ambo 1 (E-10) Devin Best				

## MEDICAL PLAN (ICS 206 WF)

<b>Brice Creek Fire Div C</b>	ALS kit with UTV	Medic Team 20 (O-86) Sam Nakanishi	
<b>Dinner Fire Div D</b>	ALS kit with UTV ALS Ambulance 4X4 with ALS & Rope Rescue	Medic Team 21(O-87) Brennen Hill Ambo 2 (E-3) Zach Tromp REMS 11 (O-29) Joe Decker	
<b>Sharps Creek Basecamp</b>	ALS Ambulance ALS kit, OTC meds	Ambo 4 (E-63) Andrew Lymen Lee Venning MEDL (O-1.44) Angela Cisneros Thorsvold MEDL(O-80)	
<b>Dorena Grange ICP</b>	BLS kit, OTC meds	Diana Braun MEDL (O-1.45)	
<b>Prepared By (Medical Unit Leader)</b>		<b>Reviewed By (Safety Officer)</b>	
<b>Date/Time</b>		<b>Date/Time</b>	
Diana Braun <i>Diana Braun</i>	9/2/2023	Jack Cates <i>Jack Cates</i>	9/2/2023

# MEDICAL PLAN (ICS 206 WF)

Controlled Unclassified Information//Basic

## Medical Incident Report

**FOR A NON-EMERGENCY INCIDENT, WORK THROUGH CHAIN OF COMMAND TO REPORT AND TRANSPORT INJURED PERSONNEL AS NECESSARY.**

**FOR A MEDICAL EMERGENCY: IDENTIFY ON SCENE INCIDENT COMMANDER BY NAME AND POSITION AND ANNOUNCE "MEDICAL EMERGENCY" TO INITIATE RESPONSE FROM IMT COMMUNICATIONS/DISPATCH.**

Use the following items to communicate situation to communications/dispatch.

1. CONTACT COMMUNICATIONS / DISPATCH (**Verify correct frequency prior to starting report**)

*Ex: "Communications, Div. Alpha. Stand-by for Emergency Traffic."*

2. INCIDENT STATUS: *Provide incident summary (including number of patients) and command structure.*

*Ex: "Communications, I have a Red priority patient, unconscious, struck by a falling tree. Requesting air ambulance to Forest Road 1 at (Lat./Long.) This will be the Trout Meadow Medical, IC is TFLD Jones. EMT Smith is providing medical care."*

Severity of Emergency / Transport Priority	<input type="checkbox"/> RED / PRIORITY 1 Life or limb threatening injury or illness. Evacuation need is IMMEDIATE <i>Ex: Unconscious, difficulty breathing, bleeding severely, 2° – 3° burns more than 4 palm sizes, heat stroke, disoriented.</i> <input type="checkbox"/> YELLOW / PRIORITY 2 Serious Injury or illness. Evacuation may be DELAYED if necessary. <i>Ex: Significant trauma, unable to walk, 2° – 3° burns not more than 1-3 palm sizes.</i> <input type="checkbox"/> GREEN / PRIORITY 3 Minor Injury or illness. Non-Emergency transport <i>Ex: Sprains, strains, minor heat-related illness.</i>	
Nature of Injury or Illness & Mechanism of Injury		<i>Brief Summary of Injury or Illness (Ex: Unconscious, Struck by Falling Tree)</i>
Transport Request		<i>Air Ambulance / Short Haul/Hoist Ground Ambulance / Other</i>
Patient Location		<i>Descriptive Location &amp; Lat. / Long. (WGS84)</i>
Incident Name		<i>Geographic Name + "Medical" (Ex: Trout Meadow Medical)</i>
On-Scene Incident Commander		<i>Name of on-scene IC of Incident within an Incident (Ex: TFLD Jones)</i>
Patient Care		<i>Name of Care Provider (Ex: EMT Smith)</i>

3. INITIAL PATIENT ASSESSMENT: *Complete this section for each patient as applicable (start with the most severe patient)*

Patient Assessment: See IRPG page 106

Treatment:

4. TRANSPORT PLAN:

Evacuation Location (if different): *(Descriptive Location (drop point, intersection, etc.) or Lat. / Long.)* Patient's ETA to Evacuation Location:

Helispot / Extraction Site Size and Hazards:

5. ADDITIONAL RESOURCES / EQUIPMENT NEEDS:

*Example: Paramedic/EMT, Crews, Immobilization Devices, AED, Oxygen, Trauma Bag, IV/Fluid(s), Splints, Rope rescue, Wheeled litter, HAZMAT, Extrication*

6. COMMUNICATIONS: Identify State Air/Ground EMS Frequencies and Hospital Contacts as applicable

Function	Channel Name/Number	Receive (RX)	Tone/NAC *	Transmit (TX)	Tone/NAC *
COMMAND					
AIR-TO-GRND					
TACTICAL					

7. CONTINGENCY: **Considerations:** *If primary options fail, what actions can be implemented in conjunction with primary evacuation method? Be thinking ahead.*

8. ADDITIONAL INFORMATION: *Updates/Changes, etc.*

**REMEMBER:** Confirm ETA's of resources ordered. Act according to your level of training. Be Alert. Keep Calm. Think Clearly. Act Decisively.

Controlled Unclassified Information//Basic