

# INCIDENT ACTION PLAN

# Umpqua Fires

September 5, 2023

0700-1900

OR-UPF-000357

DINNER

221-ICS

P6 QLJ7 (0615)

OR-UPF-000341

GRIZZLY

P6 QLOW (0615)

OR-UPF-000359

BRICE CREEK

P6 QLJ4 (0615)

OR-UPF-000354

CHILCOOT

P6 QLF5 (0615)

OR-UPF-000346

RIDGE

P6 QLF4 (0615)



IAP, MAPS,  
CHECK-IN

This page intentionally left blank.



# INCIDENT OBJECTIVES (ICS 202)

<b>1. Incident Name:</b>	<b>2. Operational Period: DAY</b>	
UMPQUA FIRES	Date/Time From: 09/05/2023 0700 TUE	Date/Time To: 09/05/2023 1900 TUE
<b>3. Objective(s):</b>		
<p><b>Control Objectives:</b></p> <ul style="list-style-type: none"> <li>Identify, evaluate and reduce risks to firefighters and the public through the use of Deliberate Risk Assessment process.</li> <li>Minimize acres burned and impacts to communities and infrastructure by utilizing the Incident Strategic Alignment Process to guide operations in the development of strategies and tactics to be implemented by resources on the Grizzly, Dinner, and Brice Creek Fires</li> <li>Implement strategic actions that have the highest probability of success to mitigate adverse impacts to values at risk, including:               <ul style="list-style-type: none"> <li>Highway 138 corridor</li> <li>Bohemia Mining District</li> <li>Fairview Communication site</li> <li>Chilcoot Repeater</li> <li>Private industrial and non-industrial timber land</li> <li>Infrastructure &amp; Recreation</li> <li>Protection of habitat for Threatened and Endangered Species.</li> </ul> </li> </ul> <p><b>Management Objectives:</b></p> <ul style="list-style-type: none"> <li>Treat each other with dignity and respect and act in a professional manner while on the fire and in the community.</li> <li>Work Closely with Agency Administrators and Lead Resource Advisor to plan and implement actions that protect sensitive natural and cultural resources at risk from suppression actions.</li> <li>Maintain and enhance relationships with cooperators, stakeholders, landowners, and communities by providing accurate and timely information.</li> <li>Manage cost commensurate with values at risk and maintain fiscal accountability.</li> </ul>		
<b>4. Operational Period Command Emphasis:</b>		
<p>Implement strategies and tactics to achieve incident objectives with the least amount of risk practical and the highest probability of success. Our fires have the potential to escape existing control lines, ensure that mop-up standards are being met and adequate patrols are occurring. Ensure initial attack support readiness to support the local area with any additional fires.</p>		
<b>General Situational Awareness:</b>		
<p>NW 12 assumed command of the Chilcoot and Ridge fires, transitions in command can create confusion. Ensure you know who you are working for and know the plan. Refer to your assigned division's 204 and review the Task/Purpose/End State to ensure work assignments are aligned with leaders intent.</p>		
<b>5. Site Safety Plan Required?</b> Yes <input type="checkbox"/> No <input checked="" type="checkbox"/>		
<b>Approved Site Safety Plan(s) Located</b>		
<b>6. Incident Action Plan</b> (the items checked below are included in this Incident Action Plan):		
<input checked="" type="checkbox"/> ICS 202 <input checked="" type="checkbox"/> ICS 203 <input checked="" type="checkbox"/> ICS 204 <input checked="" type="checkbox"/> ICS 205 <input checked="" type="checkbox"/> ICS 205A <input checked="" type="checkbox"/> ICS 206	<input type="checkbox"/> ICS 207 <input type="checkbox"/> ICS 208 <input checked="" type="checkbox"/> ICS 220 <input checked="" type="checkbox"/> Map/Chart <input checked="" type="checkbox"/> Weather Forecast/Tides/Currents	Other Attachments: <input checked="" type="checkbox"/> FIRE BEHAVIOR MESSAGE <input checked="" type="checkbox"/> SAFETY MESSAGE <input checked="" type="checkbox"/> HR MESSAGE <input type="checkbox"/> _____
<b>7. Prepared by:</b> JILL JOHNSON	<b>Position/Title:</b> PSC	<b>Signature:</b> <i>Jill Johnson</i>
<b>8. Approved by Incident Commander:</b>	<b>Name:</b> JEFF BOUSCHOR	<b>Signature:</b> <i>Jeff Bouschor</i>
<b>ICS 202</b>	<b>IAP Page</b>	<b>Date/Time:</b> 09/04/2023 2000

## ORGANIZATION ASSIGNMENT LIST (ICS 203)

<b>1. Incident Name:</b>		<b>2. Operational Period:</b> DAY	
UMPQUA FIRES		Date/Time From: 09/05/2023 0700 TUE	Date/Time To: 09/05/2023 1900 TUE
<b>3. Incident Commander(s) and Command Staff:</b>		<b>7. Operations Section:</b>	
IC/UC	JEFF DIMKE; JEFF BOUSCHOR (T)	FACILITIES UNIT	BRANDY LANGUM; DENISE HIKLEY TOM THOMPSON; DAVE SENEVIRATNE(T)
DEPUTY	BOB SHINDELAR	GROUND SUPPORT UNIT	DAVID HARSH; TOM FORTIN DENNIS LIEN; TIM BAKER (T)
SAFETY OFFICER	TROY CORN JACK CATES; TAIJA CORSO	COMMUNICATIONS UNIT	MISSY PARKER; CARSON WATSON
INFORMATION OFFICER	JOEL BRUMM HEATHER APPELHOF (T)	MEDICAL UNIT	LEE VENNING; DIANA BRAUN
HUMAN RESOURCES	SUSIE MANEZES	FOOD UNIT	ALEX LILLA; JOCAB BEARD MIKEAL GATES
LIAISON OFFICER	JEFF SEVIGNEY; JON MEIER (T)		
<b>4. Agency/Organization Representative(s):</b>		<b>7. Operations Section:</b>	
<b>Agency/Organization</b>	<b>Name</b>	PLANNING OPS SECTION CHIEF	MATT CASTLE; DEANA WALL (T)
UMPQUA NATIONAL FOREST	DAVID ANDERSEN, JACK LEWIS; BETH CHRISTIANSEN CARIN VADALA (T); MARK SOMMER (T)	FIELD OPS SECTION CHIEF	KURT RANTA; CODY ACORD
WILLAMETTE NATIONAL FOREST	MOLLY JULLERAT	STRATEGIC OPS SECTION CHIEF	TONY ENGEL; AARON ROWE
BLM - EUGENE	DENNIS TIEZEL	<b>Branch</b>	<b>I-COTTAGE GROVE</b>
BLM - ROSEBURG	HEATHER WHITMAN	BRANCH DIRECTOR	JEROMY WILSON
ODF	CHRIS CLINE; BILL HUNT	DIVISION/GROUP	STRUCTURE
DFPA	LINK SMITH	DIVISION/GROUP	S/Z
LEAD READ - USFS	JESSE SOY	DIVISION/GROUP	A/C
USFS - SW IARR	MANUEL MARTINEZ	DIVISION/GROUP	D
<b>5. Planning Section:</b>		<b>Branch</b>	<b>II-NORTH UMPQUA</b>
CHIEF	JILL JOHNSON	BRANCH DIRECTOR	KENT CONTRERAS
DEPUTY	SEAN BROGAN	DIVISION/GROUP	DD
RESOURCES UNIT	MARGE HUTCHINSON; SCOTT SANDINE (T) JENNIFER NORTON (T)	DIVISION/GROUP	EE
SITUATION UNIT	DAVE WISCHER; CLINT ROBERTS	DIVISION/GROUP	HH
DOCUMENTATION UNIT	DEIDRE SMITH (VIRTUAL)	DIVISION/GROUP	JJ
DEMOBILIZATION UNIT	JAN GRISEDALE MIKE HESTON (VIRTUAL)	DIVISION/GROUP	CONTINGENCY
IT SPECIALIST	GEORGE JENKINS; VONIETA WOODARD LIBBY EVERETT (T); JUSTIN LEACH (T)	DIVISION/GROUP	S/W
GIS SPECIALIST	SHAWN BUSHNELL MIKE TONKEL (VIRTUAL)	<b>7b. Air Operations Branch:</b>	
FIRE BEHAVIOR ANALYST	DON STRAND; ANDREW MYHRA (T)	AIR OPS BRANCH DIRECTOR	PAUL BALFOUR
METEOROLOGIST	BOB TOBIN	<b>8. Finance/Administration Section:</b>	
<b>6. Logistics Section:</b>		CHIEF	CHRISTINA GOEBEL STEVE CROW (T)
CHIEF	KEVIN HAUGHTON; PAUL FOSTEN (T)	DEPUTY	CHERI FULLER
DEPUTY	WHIT SPENCER	PROCUREMENT UNIT	TODD POWELL
SUPPLY UNIT	THAD FRATER; JOHN KAUPA	COMPENSATION UNIT	CHERI FULLER
		COST UNIT	KAY HIGH
<b>9. Prepared By:</b>	<b>Name:</b> JENNIFER NORTON	<b>Position/Title:</b> RESL (T)	<b>Signature:</b>
ICS 203	IAP Page	<b>Date/Time:</b> 09/04/2023 2000	

## Fire Weather Forecast

**FORECAST NO:** 6  
**FORECAST FOR:** Tue, Sep 5, 2023 Day Shift  
**FORECAST ISSUED:** Mon Sep 4, 2023, 2000 PDT

**NAME OF FIRE:** Umpqua Fires  
**UNIT:** OR-UPF  
**SIGNED:** Bob Tobin - IMET

---

**WEATHER DISCUSSION:** Westerly flow will be over the Pacific NW through the week. Several disturbances are expected to move through the area...but the main energy with all of these will remain well north of the fire area. Expect a warming and drying trend, however the flat westerly flow should temper the high temperatures somewhat. At this time there is no precipitation in the forecast until next week.

---

**TODAY:** Localized fog and low clouds in the canyons in the morning...otherwise partly cloudy.

**Max Temperature(°F): (Valleys)** 65-75 (4-7 warmer)    **Min RH: (Valleys)** 40-50% (Down 5-15%)  
**(Ridges)** 60-68 (5-10 Warmer)                      **(Ridges)** 55-65% (Down 10-15%)

**20 FT Winds:**

**Valleys and Slopes:** Becoming Upslope 3-5 mph after 1000

**Ridgetops:** Becoming WNW 10-12 mph after 1300

**CWR (0.25"+):** 00%    **Inversion Break/Mixing Heights:** 1030/3700 ft.    **LAL: 1**    **Haines: 3 (Very Low)**

---

**TONIGHT:** Clear. Localized fog/low clouds in the valleys/canyons near morning.

**Min Temperature (°F):**

**Valleys**                      40-50

**Ridgetops**                    48-52

**Max RH:**

**Valleys**                      80-90%

**Ridgetops**                    70-80%

**20 FT Winds:**

**Slope/Valleys:** Downslope/drainage 3-5 mph after 2000.

**Ridgetops:**        NW 4-7 mph...becoming SSW 3-5 mph after 2100

**CWR (0.25"+):** 0%    **LAL: 1**    **INVERSION:** Strong inversion after 2000

---

**EXTENDED OUTLOOK:**

**Wednesday...**Morning fog and low clouds in the valleys, otherwise sunny. Highs 65-75 valleys and 60-65 ridges. Relative humidity 35-50% Winds: SSE 3-5 mph in the morning WNW 8-12 after 1100.

**Thursday and Friday...**Partly cloudy. Highs 70-75 valleys and 60-70 on the ridges. Humidity: 40-50% ESE 4-8 mph in the morning, becoming NW 8-10 mph with gusts around 15 mph after 1200.

**PLEASE submit your weather observations to the IMET.**

***Snap a picture of your obs and text them to: (509) 844-7003***



# FIRE BEHAVIOR FORECAST

<b>FORECAST NUMBER:</b> 6	<b>TYPE OF FIRE:</b> Wildfire
<b>FIRE NAME:</b> Umpqua Fires	<b>OPERATIONAL PERIOD:</b> 0700-1900 hrs September 5, 2023
<b>DATE ISSUED:</b> September 4, 2023	<b>TIME ISSUED:</b> 20:00 hours
<b>UNIT:</b> Umpqua National Forest	<b>SIGNED:</b> Don Strand – FBAN, Bryan Gaines FBAN (t), and Andrew Myhra FBAN (t).

## INPUTS

**WEATHER SUMMARY:** See Fire Weather Forecast for Details

**FUELS:**

Fuels in the fire area are primarily composed of *Timber Litter*, and *Timber Understory with moss/lichen present in most stands*. Mature conifer stands with western hemlock and Douglas fir generally have heavy surface fuel loading. 30 to 50+ year old second growth conifer stands contain needle litter and some down woody debris. Brush and reproduction are present in areas with less dense canopies.

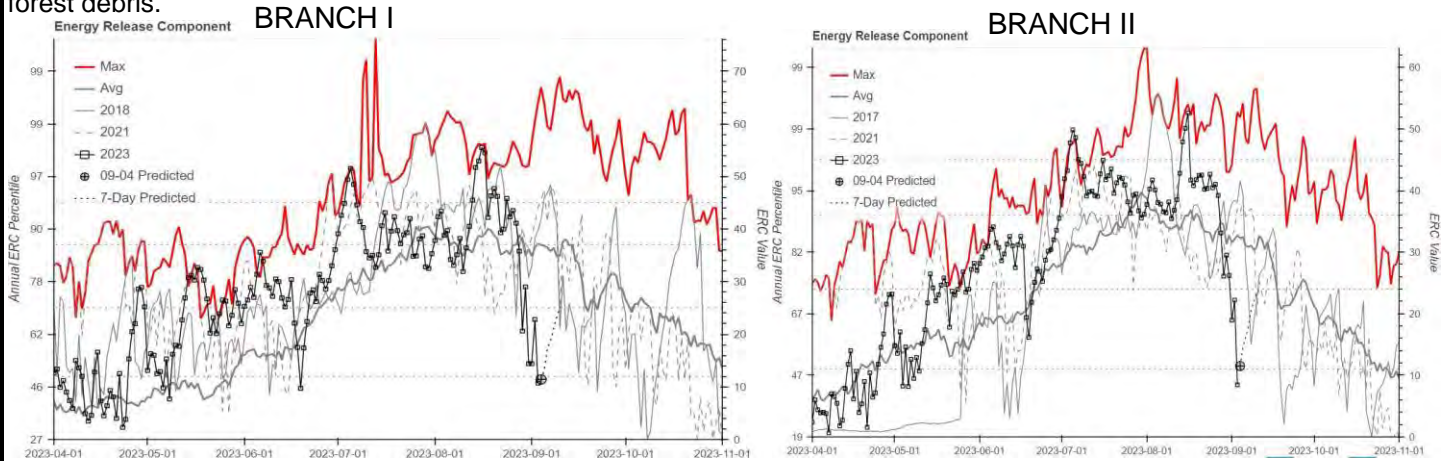
BRANCH I, ERC 46<sup>th</sup> percentile, 1hr-27%, 10hr-26%, 100hr-21%, 1000hr-19%  
 BRANCH II, ERC 47<sup>th</sup> percentile, 1hr-29%, 10hr-31%, 100hr-22%, 1000hr-19%

## OUTPUTS

Rebound of ERC values will lag behind the return of warmer, drier weather conditions.

**FIRE BEHAVIOR GENERAL:**

Minimal fire behavior is expected with little to no perimeter growth. Continued smoldering in duff, larger down logs, and forest debris.



**FIRE BEHAVIOR SPECIFIC:**

**BRANCH I and II,**

With additional moisture yesterday 9/04 minimal fire activity is expected with little to no perimeter growth. Areas of heavy dead and downed fuels will continue to consume along with ground fire in the duff. Burning standing dead trees will continue to burn creating arial hazards. The moistened soil will increase the chance of burning rolling debris carrying fire across containment lines. Even though these spot fires may not spread with the high fuel moistures there is a possibility they may when conditions return to a drying trend.

**Initial Attack:** In the event that resources respond to a new start, recognize that fuels and topography may be different than areas you have previously worked in.

**AIR OPERATIONS:** "All of us know what right looks like and we know where the line is between safe and unsafe. We must hold ourselves accountable to the standards and accomplish our mission with safety constantly in mind."

Lt. Gen Brad Heithold, Commander of Air Force Special Operations Command.

## SAFETY

Test your fire behavior skills, anticipate what could happen, be prepared and plan accordingly.



## SAFETY MESSAGE

5 September 2023

**INCIDENT: UMPQUA FIRES**

**OPERATIONAL PERIOD: 0700-1900**

### TOPICS:

#### **TRANSITION DAY FOR CHILCOOT/RIDGE**

NW12 has assumed command of the Chilcoot and Ridge Fires. Take time to develop relationships with new leadership and personnel in your Division or Section. Ensure you develop a common operating picture to ensure continuity of operations.

#### **WHAT IS COMPLACENCY?**

Simply put for the wildland environment, complacency can be a lack of awareness of actual risk, dangers or deficiencies.

#### **WHAT ARE THE SIGNS OF COMPLACENCY?**

Shortcuts, excuses, silence

#### **HOW DO WE AVOID IT?**

Avoid repetition, shake up assignments and responsibility to avoid stagnation, provide regular feedback, follow through with decisions or assignments,

**BEWARE OF MINESHAFTS! SEE THE RESOURCE ADVISOR MESSAGE!**

SAFETY OFFICERS: Jack Cates, Troy Corn

# Deliberate Risk Assessment-Hazard Summary

5 SEPT 2023

Hazard	Mitigation	Post Risk
Extraction Time	Identify medivac sites and helispots. Initiate ground transport to accident site for transport capability. Identify EMT/EMTP from resources assigned to division. Provide line-qualified paramedics to each division as available. Review IWI protocol to ensure familiarity. Consider Short Haul if conditions dictate. Utilize agency, national guard and civilian medivac as treatment/timing dictates. Evaluate ongoing need for repositioning medical personnel. Provide dust abatement on Helispots as needed.	HIGH
Aircraft	Utilize Air Attack. Ensure all resources are a safe distance from all bucket and retardant drops. Establish LCES. Utilize air to ground primary for fixed wing and bucket work as needed. Reference IRPG (Safe aircraft operations pg. 61-62). Ensure IA resources have coordination with unassigned local air resources to provide deconfliction.	HIGH
Hazard Trees	Use avoidance to limit exposure time. Fall ahead to avoid exposure. Use qualified fallers or alternate methods if needed. Conduct on- going risk analysis of all work areas. Follow Hazard Tree Safety Guidelines (IRPG page 20-21).	HIGH
Heavy Equipment	Post lookouts around equipment work areas. Establish communications with equipment boss and operator. Do not work down-slope from equipment. Follow agency guidelines for chipping operations.	HIGH
Physical Factors	Maintain hydration schedule. Closely monitor work rate and implement rest periods. Maintain nutrition. Ensure adequate work/rest.	MODERATE
Fire Behavior/Weather	Be aware of burn windows and weather impacts and min/max RH for flashy fuels/local conditions. Report changes to FBAN and IMET. Establish MAP for disengagement to provide for an orderly retreat if there is a lack of safety zones. Have a plan for disengagement that establishes a designated meeting point and maintains personnel accountability.	MODERATE
Steep Terrain/Gravity	Establish LCES. Do not work crews above or below each other. Post lookouts for rolling material. Watch footing in loose soil, rock and around vegetation. Do not work below heavy equipment. Scout and identify travel routes.	MODERATE
Transportation	Sign all incident roads that provide access to divisions. Provide daily updated travel plan maps. Practice defensive driving. In local communities obey the posted speed limits and follow school zone restrictions. Use reader boards to provide advanced warning and control entry to base camp as needed. Identify and evaluate contingency and alternate escape and travel routes. Provide dust abatement and grading as needed. Provide advanced scouting for transport access and bridge weight restrictions. Maintain awareness of logging haul routes.	MODERATE
Unburned Fuels/Firing Ops	Maintain awareness fuel dryness levels. Establish LCES. Ensure management action points are implemented and followed. Weather updates as needed during burning operations. Locate indirect firelines to minimize unburned fuels. Follow Interagency Ignition Guide. Ensure communications between all firing operations. Establish road security at all firing sites. Follow approved firing plan for unburned fuels. If utilizing aerial ignitions, make sure firing plan is in place, communicated to, and understood by all resources. Utilize separate Air to Ground frequencies for operations as appropriate.	MODERATE
Environmental Factors	Assign medical personnel to camp. Assess for known allergies and report to medical personnel. Obtain Bee Bopper/wasp spray and yellow jacket traps. Maintain an awareness of wildlife and poison oak. Identify and report allergies through your chain of command. Work with READS and GISS to evaluate and identify mineshafts. Avoid, flag and communicate locations of mineshafts. Provide visqueen for rainfall protection.	MODERATE
Structure Protection	Review structure protection plan and ground truth whether defensible. Identify and report compromised service poles and maintain one span avoidance area. Identify downed lines. Treat all powerlines as live. Identify and avoid vehicles, tires, propane tanks, gas tanks and heavy fuels concentrations.	MODERATE
Communication	Evaluate dead zones prior to engagement. Utilize human repeaters as needed. Ensure accountability of resources in problem areas. Spiking resources must have communication coverage.	LOW
Viral Transmission Mitigations, Communicable Disease	Maintain awareness of health and perform self-checks. Report and isolate if not feeling well. Use remote briefings, spike camps and logistical layouts that provide for social-distancing as necessary. Establish liaison with Lane County Public Health.	LOW
Public Interaction	Implement area and road closures as necessary. Maintain a lookout for hunters in and out of closure areas. Maintain awareness of evacuation areas and provide accurate information dissemination. <b>Maintain awareness of hunters and holiday recreation.</b>	LOW
Initial Attack	Ensure identified IA resources are briefed of expectations and ensure communication plan is provided. Ensure resources are briefed on IA command structure. Provide identified crews with area maps.	LOW



**Division/Group Assignment List (ICS 204 WF)**  
**Controlled Unclassified Information//Basic**

<b>1. Incident Name:</b>				<b>3.</b>		
UMPQUA FIRES				<b>Branch:</b>		<b>Division/Group</b>
<b>2. Operational Period: DAY</b>				I - COTTAGE GROVE		S/Z
Date/Time From: 09/05/2023 0700 TUE		Date/Time To: 09/05/2023 1900 TUE				
<b>4. Operations Personnel</b>						
<b>OPERATIONS CHIEF</b>		KURT RANTA CODY ACORD (T)		<b>SAFETY OFFICERS</b>		TROY CORN JACK CATES; TAIJA CORSO
<b>BRANCH DIRECTOR</b>		JEROMY WILSON		<b>DIVISION/GROUP SUPERVISOR</b>		CHRISTOPHER WHITE CHRIS RAMISKEY (T)
<b>5. Resources Assigned this Period</b>						
Strike Team / Task Force / Resource Designator		LWD	Leader	Number Persons	Drop Off PT./Time	Pick Up PT./Time
O-36 SOFC		09/13	RICHARD M MCCONNELL	1	SHARPS CREEK BASE CAMP/0700	SHARPS CREEK BASE CAMP/1900
O-4 TFLD		09/08	KYLE HEFLIN	1	SHARPS CREEK BASE CAMP/0700	SHARPS CREEK BASE CAMP/1900
C-8 CRW1 PIONEER PEAK IHC		09/14	KRISTOFER BAUMGARTNER	23	SHARPS CREEK BASE CAMP/0700	SHARPS CREEK BASE CAMP/1900
C-9 CR2I SANTIAM RIVER		09/14	MATHIAS CUISON JR	19	SHARPS CREEK BASE CAMP/0700	SHARPS CREEK BASE CAMP/1900
C-10001 CRW2 TOM FERY C190 ODF IRA		09/08	FRANCISCO GARCIA	20	SHARPS CREEK BASE CAMP/0700	SHARPS CREEK BASE CAMP/1900
E-4 WTS2 PACIFIC RIDGELINE		09/15	CARROLL HUFFMAN	1	SHARPS CREEK BASE CAMP/0700	SHARPS CREEK BASE CAMP/1900
E-13 WTS2 TIMBER FELLING		09/15	SPENCER SIMONS	1	SHARPS CREEK BASE CAMP/0700	SHARPS CREEK BASE CAMP/1900
E-6 GRD1 MARK JONES TRUCKING		09/15	MARK JONES	2	SHARPS CREEK BASE CAMP/0700	SHARPS CREEK BASE CAMP/1900
E-89 EXC2 SANTUCCI RANCH TURF, LLC		09/16	ANTHONY KLOEPPING		SHARPS CREEK BASE CAMP/0700	SHARPS CREEK BASE CAMP/1900
O-82 REMS 10 - BEYOND THE EDGE REMS 10		09/14	JESSE BEAN	4	SHARPS CREEK BASE CAMP/0700	SHARPS CREEK BASE CAMP/1900
O-88 EMTF RAT - OZARK MEDICS		09/16	JOHN BUCHAN	2	SHARPS CREEK BASE CAMP/0700	SHARPS CREEK BASE CAMP/1900
E-1 AMBO 3 - TRI COUNTY AMBULANCE		09/12	LONNIE CAMP	2	SHARPS CREEK BASE CAMP/0700	SHARPS CREEK BASE CAMP/1900
O-145 REAF		09/14	KELSEY KNOX	1	SHARPS CREEK BASE CAMP/0700	SHARPS CREEK BASE CAMP/1900
O-159 REAF		09/09	EMILY HARTWIG	1	SHARPS CREEK BASE CAMP/0700	SHARPS CREEK BASE CAMP/1900
<b>8. Division/Group Communication Summary</b>						
Function	Channel	RX Frequency N/W	RX Tone/NAC	TX Frequency N/W	TX Tone/NAC	Mode
TACTICAL	4	166.7250	100.0	166.7250	100.0	A
COMMAND	7	170.0625	100.0	162.4375	100.0	A
COMMAND	8	169.6125	100.0	162.5125	100.0	A
AIR TO GROUND	13	165.9875		165.9875		A
AIR TO GROUND	14	173.5000		173.5000		A
<b>9. Prepared By (Resource Unit Leader)</b>			<b>Approved By (Planning Section Chief)</b>		<b>Date</b>	<b>Time</b>
MARGE HUTCHINSON			JILL JOHNSON		09/04/2023	1148

**Division/Group Assignment List (ICS 204 WF)**  
**Controlled Unclassified Information//Basic**

<b>1. Incident Name:</b>				<b>3.</b>		
UMPQUA FIRES				<b>Branch:</b>		<b>Division/Group</b>
<b>2. Operational Period: DAY</b>				I - COTTAGE GROVE		S/Z
Date/Time From: 09/05/2023 0700 TUE		Date/Time To: 09/05/2023 1900 TUE				
<b>4. Operations Personnel</b>						
<b>OPERATIONS CHIEF</b>		KURT RANTA CODY ACORD (T)		<b>SAFETY OFFICERS</b>		TROY CORN JACK CATES; TAIJA CORSO
<b>BRANCH DIRECTOR</b>		JEROMY WILSON		<b>DIVISION/GROUP SUPERVISOR</b>		CHRISTOPHER WHITE CHRIS RAMISKEY (T)
<b>5. Resources Assigned this Period</b>						
Strike Team / Task Force / Resource Designator		LWD	Leader	Number Persons	Drop Off PT./Time	Pick Up PT./Time
E-3 VUTV TOP GUN					SHARPS CREEK BASE CAMP/0700	SHARPS CREEK BASE CAMP/1900
E-15 VUTV TOP GUN					SHARPS CREEK BASE CAMP/0700	SHARPS CREEK BASE CAMP/1900
E-84 VUTV KWIK RESPONSE SUPPORT					SHARPS CREEK BASE CAMP/0700	SHARPS CREEK BASE CAMP/1900
E-90 VUTV TOG GUN					SHARPS CREEK BASE CAMP/0700	SHARPS CREEK BASE CAMP/1900
O-87 REAF		09/06	JOHNATHON HARDER	1	SHARPS CREEK BASE CAMP/0700	SHARPS CREEK BASE CAMP/1900
O-86 REAF		09/06	RACHEL FREDBACK	1	SHARPS CREEK BASE CAMP/0700	SHARPS CREEK BASE CAMP/1900
<b>6. Control Operations/Work Assignments:</b>						
<p>TASK: Scout and establish implementation plans for strategic options to limit and check fire spread on the Grizzly fire</p> <p>PURPOSE: Prevent fire from impacting values at risk including: communities to the west, historic mining community, infrastructure, and commercial timberlands.</p> <p>END STATE: Growth on the Grizzly Fire is minimized where possible and managed by establishing implementation plans defined in Management Action Points</p>						
<b>7. Special Instructions:</b>						
For this DIV - add GRIZZLY FIRE to all CTRs & Shift tickets						
<b>8. Division/Group Communication Summary</b>						
Function	Channel	RX Frequency N/W	RX Tone/NAC	TX Frequency N/W	TX Tone/NAC	Mode
TACTICAL	4	166.7250	100.0	166.7250	100.0	A
COMMAND	7	170.0625	100.0	162.4375	100.0	A
COMMAND	8	169.6125	100.0	162.5125	100.0	A
AIR TO GROUND	13	165.9875		165.9875		A
AIR TO GROUND	14	173.5000		173.5000		A
<b>9. Prepared By (Resource Unit Leader)</b>			<b>Approved By (Planning Section Chief)</b>		<b>Date</b>	<b>Time</b>
MARGE HUTCHINSON			JILL JOHNSON		09/04/2023	1148

**Division/Group Assignment List (ICS 204 WF)**  
**Controlled Unclassified Information//Basic**

<b>1. Incident Name:</b>				<b>3.</b>		
UMPQUA FIRES				<b>Branch:</b>  I - COTTAGE GROVE	<b>Division/Group</b>  STRUCTURE	
<b>2. Operational Period: DAY</b>						
Date/Time From: 09/05/2023 0700 TUE		Date/Time To: 09/05/2023 1900 TUE				
<b>4. Operations Personnel</b>						
<b>OPERATIONS CHIEF</b>		KURT RANTA CODY ACORD (T)		<b>SAFETY OFFICERS</b>		TROY CORN JACK CATES; TAIJA CORSO
<b>BRANCH DIRECTOR</b>		JEROMY WILSON		<b>DIVISION/GROUP SUPERVISOR</b>		MILES POLLACK CRIS MACHADO (T)
<b>5. Resources Assigned this Period</b>						
Strike Team / Task Force / Resource Designator		LWD	Leader	Number Persons	Drop Off PT./Time	Pick Up PT./Time
O-36 SOF2		09/13	RICHARD M MCCONNELL	1	SHARPS CREEK BASE CAMP/0700	SHARPS CREEK BASE CAMP/1900
O-1 TFLD		09/08	JUSTIN WHITE	1	SHARPS CREEK BASE CAMP/0700	SHARPS CREEK BASE CAMP/1900
C-10002 CRW2 R&R CONTRACTING		09/14	ISMAEL RANGEL	20	SHARPS CREEK BASE CAMP/0700	SHARPS CREEK BASE CAMP/1900
C-10003 CRW2 GFP ENTERPRISES		09/14	LUIS FIGUERAS	20	SHARPS CREEK BASE CAMP/0700	SHARPS CREEK BASE CAMP/1900
E-16 ENG6 FWF ENG-654		09/05	MIKE GRAHAM	4	SHARPS CREEK BASE CAMP/0700	SHARPS CREEK BASE CAMP/1900
E-13 VUTV KD OUTDOORS LLC					SHARPS CREEK BASE CAMP/0700	SHARPS CREEK BASE CAMP/1900
O-86 REAF		09/06	RACHEL FREDBACK	1	SHARPS CREEK BASE CAMP/0700	SHARPS CREEK BASE CAMP/1900
O-87 REAF		09/06	JOHNATHON HARDER	1	SHARPS CREEK BASE CAMP/0700	SHARPS CREEK BASE CAMP/1900
<b>6. Control Operations/Work Assignments:</b>						
<p>TASK: Provide structure protection assessment, planning, and preparation on the Bohemia Mines, Crystal Lake, the Fairview Lookout, Musick Guard Station, and other mining infrastructure.</p> <p>PURPOSE: Minimize fire impacts to private residences and historic structures in the fire area.</p> <p>END STATE: Area to be protected is prepped and secured, including trigger points identified to implement any additional measures.</p>						
<b>7. Special Instructions:</b>						
For this DIV - add GRIZZLY FIRE to all CTRs & Shift tickets						
<b>8. Division/Group Communication Summary</b>						
Function	Channel	RX Frequency N/W	RX Tone/NAC	TX Frequency N/W	TX Tone/NAC	Mode
TACTICAL	6	168.2500	100.0	168.2500	100.0	A
COMMAND	7	170.0625	100.0	162.4375	100.0	A
COMMAND	8	169.6125	100.0	162.5125	100.0	A
AIR TO GROUND	13	165.9875		165.9875		A
AIR TO GROUND	14	173.5000		173.5000		A
<b>9. Prepared By (Resource Unit Leader)</b>			<b>Approved By (Planning Section Chief)</b>		<b>Date</b>	<b>Time</b>
MARGE HUTCHINSON			JILL JOHNSON		09/04/2023	1148

**Division/Group Assignment List (ICS 204 WF)**  
**Controlled Unclassified Information//Basic**

<b>1. Incident Name:</b>				<b>3.</b>		
UMPQUA FIRES				<b>Branch:</b>		<b>Division/Group</b>
<b>2. Operational Period: DAY</b>				I - COTTAGE GROVE		A/C
Date/Time From: 09/05/2023 0700 TUE		Date/Time To: 09/05/2023 1900 TUE				
<b>4. Operations Personnel</b>						
<b>OPERATIONS CHIEF</b>		KURT RANTA CODY ACORD (T)		<b>SAFETY OFFICERS</b>		TROY CORN JACK CATES; TAIJA CORSO
<b>BRANCH DIRECTOR</b>				<b>DIVISION/GROUP SUPERVISOR</b>		KEN FOSS NICK WIGLE, (T)
<b>5. Resources Assigned this Period</b>						
Strike Team / Task Force / Resource Designator		LWD	Leader	Number Persons	Drop Off PT./Time	Pick Up PT./Time
O-1.32 SOF2		09/12	PAUL BRNA	1	SHARPS CREEK BASE CAMP/0700	SHARPS CREEK BASE CAMP/1900
L/L TFLD		09/09	MARISSA DUARTE	1	SHARPS CREEK BASE CAMP/0700	SHARPS CREEK BASE CAMP/1900
L/L TFLD (T)		09/09	DANE DEXTER	1	SHARPS CREEK BASE CAMP/0700	SHARPS CREEK BASE CAMP/1900
O-3 TFLD				1	SHARPS CREEK BASE CAMP/0700	SHARPS CREEK BASE CAMP/1900
O-4 TFLD			JACK MASTERS	1	SHARPS CREEK BASE CAMP/0700	SHARPS CREEK BASE CAMP/1900
C-8.25 TFLD		09/14	THOMAS J ENZI	1	SHARPS CREEK BASE CAMP/0700	SHARPS CREEK BASE CAMP/1900
O-45 FELB		09/10	BEN JONGEWARD	1	SHARPS CREEK BASE CAMP/0700	SHARPS CREEK BASE CAMP/1900
O-1 FMOD A & C CUTTING		09/09	ELIJAH	1	SHARPS CREEK BASE CAMP/0700	SHARPS CREEK BASE CAMP/1900
O-2 FMOD VALLEY TIMBER RESOURCE, INC.		09/09	MARTIN PICKLE	2	SHARPS CREEK BASE CAMP/0700	SHARPS CREEK BASE CAMP/1900
O-2 FMOD CREEL CUTTING		09/15	TYLER GRAVES	2	SHARPS CREEK BASE CAMP/0700	SHARPS CREEK BASE CAMP/1900
O-13 FMOD				2	SHARPS CREEK BASE CAMP/0700	SHARPS CREEK BASE CAMP/1900
C-9 CRW1 PRESCOTT IHC		09/11	DARIN D FISHER	23	SHARPS CREEK BASE CAMP/0700	SHARPS CREEK BASE CAMP/1900
C-12 CRW1 SILVER STATE IHC		09/09	KEVIN KELLY	22	SHARPS CREEK BASE CAMP/0700	SHARPS CREEK BASE CAMP/1900
C-1 CRW2 NORTH REFORESTATION CREW 2		09/11	JOSE RINCON	20	SHARPS CREEK BASE CAMP/0700	SHARPS CREEK BASE CAMP/1900
C-5 CRW2 STEELHEAD		09/10	PEDRO WRIGHT	20	SHARPS CREEK BASE CAMP/0700	SHARPS CREEK BASE CAMP/1900
C-8 CRW2 WEST COAST REFORESTATION C-1		09/11	HOMER HERNANDEZ	20	SHARPS CREEK BASE CAMP/0700	SHARPS CREEK BASE CAMP/1900
<b>8. Division/Group Communication Summary</b>						
Function	Channel	RX Frequency N/W	RX Tone/NAC	TX Frequency N/W	TX Tone/NAC	Mode
TACTICAL	1	168.0500	100.0	168.0500	100.0	A
COMMAND	7	170.0625	100.0	162.4375	100.0	A
COMMAND	8	169.6125	100.0	162.5125	100.0	A
AIR TO GROUND	13	165.9875		165.9875		A
AIR TO GROUND	14	173.5000		173.5000		A
<b>9. Prepared By (Resource Unit Leader)</b>			<b>Approved By (Planning Section Chief)</b>		<b>Date</b>	<b>Time</b>
MARGE HUTCHINSON			JILL JOHNSON		09/04/2023	1148

## Division/Group Assignment List (ICS 204 WF)

Controlled Unclassified Information//Basic

<b>1. Incident Name:</b>				<b>3.</b>			
UMPQUA FIRES				<b>Branch:</b>		<b>Division/Group</b>	
<b>2. Operational Period:</b> DAY				<b>I - COTTAGE GROVE</b>		<b>A/C</b>	
Date/Time From: 09/05/2023 0700 TUE		Date/Time To: 09/05/2023 1900 TUE					
<b>4. Operations Personnel</b>							
<b>OPERATIONS CHIEF</b>		KURT RANTA CODY ACORD (T)		<b>SAFETY OFFICERS</b>		TROY CORN JACK CATES; TAIJA CORSO	
<b>BRANCH DIRECTOR</b>				<b>DIVISION/GROUP SUPERVISOR</b>		KEN FOSS NICK WIGLE, (T)	
<b>5. Resources Assigned this Period</b>							
Strike Team / Task Force / Resource Designator		LWD	Leader	Number Persons	Drop Off PT./Time	Pick Up PT./Time	
C-13 CR2I GRAYBACK 13B		09/09	CAMDEN RHINEHART	20	SHARPS CREEK BASE CAMP/0700	SHARPS CREEK BASE CAMP/1900	
C-14 CR2I GREYBACK 13A		09/09	RONALD WOOD	20	SHARPS CREEK BASE CAMP/0700	SHARPS CREEK BASE CAMP/1900	
E-10 ENG6 THREE STRIPES CONTRACTING		09/16	JOE GODDARD	3	SHARPS CREEK BASE CAMP/0700	SHARPS CREEK BASE CAMP/1900	
E-11 ENG6 ENG6 - BIG BEAR LOGGING		09/14	MIKE HOPKINS	3	SHARPS CREEK BASE CAMP/0700	SHARPS CREEK BASE CAMP/1900	
E-14 ENG6 FRANCO REFORESTATION		09/15	HUMBERTO CHOY	3	SHARPS CREEK BASE CAMP/0700	SHARPS CREEK BASE CAMP/1900	
E-19 ENG6 UMF - ENG 658		09/09	CLAY GABELMANN	3	SHARPS CREEK BASE CAMP/0700	SHARPS CREEK BASE CAMP/1900	
E-39 ENG4 STERLING SYSTEMS		09/17	BRIAN MOORE	3	SHARPS CREEK BASE CAMP/0700	SHARPS CREEK BASE CAMP/1900	
E-41 ENG4 METHOW RIVER WILD FIRE		09/13	JORDI HERNANDEZ	3	SHARPS CREEK BASE CAMP/0700	SHARPS CREEK BASE CAMP/1900	
E-44 ENG4 HI COUNTRY		09/14	TARYN THOMAS	3	SHARPS CREEK BASE CAMP/0700	SHARPS CREEK BASE CAMP/1900	
E-68 ENG6 OVERWATCH ENTERPRISE		09/14	STEVEN ROBERTSON	2	SHARPS CREEK BASE CAMP/0700	SHARPS CREEK BASE CAMP/1900	
E-2 WTS2 RHXDEM		09/10	RUSSEL ROBISON	1	SHARPS CREEK BASE CAMP/0700	SHARPS CREEK BASE CAMP/1900	
E-9 WT2S IRELAND BROTHERS		09/12	ADAM FRASIER	1	SHARPS CREEK BASE CAMP/0700	SHARPS CREEK BASE CAMP/1900	
E-6 DZR					SHARPS CREEK BASE CAMP/0700	SHARPS CREEK BASE CAMP/1900	
O-85 REMS 12 - HART		09/17	SUEANN MURPHY	4	SHARPS CREEK BASE CAMP/0700	SHARPS CREEK BASE CAMP/1900	
E-63 AMBO 4- WILDERNESS MEDICS		09/14	ANDREW LYMAN	2	SHARPS CREEK BASE CAMP/0700	SHARPS CREEK BASE CAMP/1900	
<b>8. Division/Group Communication Summary</b>							
Function	Channel	RX Frequency N/W	RX Tone/NAC	TX Frequency N/W	TX Tone/NAC	Mode	
TACTICAL	1	168.0500	100.0	168.0500	100.0	A	
COMMAND	7	170.0625	100.0	162.4375	100.0	A	
COMMAND	8	169.6125	100.0	162.5125	100.0	A	
AIR TO GROUND	13	165.9875		165.9875		A	
AIR TO GROUND	14	173.5000		173.5000		A	
<b>9. Prepared By (Resource Unit Leader)</b>			<b>Approved By (Planning Section Chief)</b>			<b>Date</b>	<b>Time</b>
MARGE HUTCHINSON			JILL JOHNSON			09/04/2023	1148



**Division/Group Assignment List (ICS 204 WF)**  
**Controlled Unclassified Information//Basic**

<b>1. Incident Name:</b>				<b>3.</b>		
UMPQUA FIRES				<b>Branch:</b>  I - COTTAGE GROVE	<b>Division/Group</b>  A/C	
<b>2. Operational Period: DAY</b>						
Date/Time From: 09/05/2023 0700 TUE		Date/Time To: 09/05/2023 1900 TUE				
<b>4. Operations Personnel</b>						
<b>OPERATIONS CHIEF</b>		KURT RANTA CODY ACORD (T)		<b>SAFETY OFFICERS</b>		TROY CORN JACK CATES; TAIJA CORSO
<b>BRANCH DIRECTOR</b>				<b>DIVISION/GROUP SUPERVISOR</b>		KEN FOSS NICK WIGLE, (T)
<b>5. Resources Assigned this Period</b>						
Strike Team / Task Force / Resource Designator		LWD	Leader	Number Persons	Drop Off PT./Time	Pick Up PT./Time
O-86 REAF		09/06	RACHEL FREDBACK	1	SHARPS CREEK BASE CAMP/0700	SHARPS CREEK BASE CAMP/1900
O-87 REAF		09/06	JOHNATHON HARDER	1	SHARPS CREEK BASE CAMP/0700	SHARPS CREEK BASE CAMP/1900
<b>6. Control Operations/Work Assignments:</b>						
<p>TASK: Construct direct and indirect fireline and secure perimeter.          PURPOSE: Prevent fire from impacting values at risk including: communities to the west, commercial timberlands, and T &amp; E habitat.          END STATE: Fire is kept north of the 22 Road, south of the 2216 Road, and east of 732 Road, to protect the values at risk through the remainder of the fire season.</p>						
<b>7. Special Instructions:</b>						
For this DIV - add BRICE CREEK FIRE to all CTRs & Shift tickets						
<b>8. Division/Group Communication Summary</b>						
Function	Channel	RX Frequency N/W	RX Tone/NAC	TX Frequency N/W	TX Tone/NAC	Mode
TACTICAL	1	168.0500	100.0	168.0500	100.0	A
COMMAND	7	170.0625	100.0	162.4375	100.0	A
COMMAND	8	169.6125	100.0	162.5125	100.0	A
AIR TO GROUND	13	165.9875		165.9875		A
AIR TO GROUND	14	173.5000		173.5000		A
<b>9. Prepared By (Resource Unit Leader)</b>			<b>Approved By (Planning Section Chief)</b>		<b>Date</b>	<b>Time</b>
MARGE HUTCHINSON			JILL JOHNSON		09/04/2023	1148

**Division/Group Assignment List (ICS 204 WF)**  
**Controlled Unclassified Information//Basic**

<b>1. Incident Name:</b>				<b>3.</b>		
UMPQUA FIRES				<b>Branch:</b>  I - COTTAGE GROVE	<b>Division/Group</b>  D	
<b>2. Operational Period: DAY</b>						
Date/Time From: 09/05/2023 0700 TUE		Date/Time To: 09/05/2023 1900 TUE				
<b>4. Operations Personnel</b>						
<b>OPERATIONS CHIEF</b>		KURT RANTA CODY ACORD (T)		<b>BRANCH DIRECTOR</b>		
<b>SAFETY OFFICERS</b>		TROY CORN JACK CATES; TAIJA CORSO		<b>DIVISION/GROUP SUPERVISOR</b>		JEFF LUCAS CARSON ZEPP (T)
<b>5. Resources Assigned this Period</b>						
Strike Team / Task Force / Resource Designator		LWD	Leader	Number Persons	Drop Off PT./Time	Pick Up PT./Time
O-1.32 SOF2		09/12	PAUL BRNA	1	SHARPS CREEK BASE CAMP/0700	SHARPS CREEK BASE CAMP/1900
O-1 FMOD S5 LANDSERVICES		09/10	BRYER ZIMMERMAN	2	SHARPS CREEK BASE CAMP/0700	SHARPS CREEK BASE CAMP/1900
C-5 T2IA LOST RIVER		09/09	AARON VASILIS	20	SHARPS CREEK BASE CAMP/0700	SHARPS CREEK BASE CAMP/1900
C-10 CR21 ALTA PACIFIC CREW 5		09/11	LEO TORRES	20	SHARPS CREEK BASE CAMP/0700	SHARPS CREEK BASE CAMP/1900
C-11 CRW2 LAVA RIVER CREW 1		09/11	RAUL GUZMAN	20	SHARPS CREEK BASE CAMP/0700	SHARPS CREEK BASE CAMP/1900
E-11 ENG6 JD FORESTRY		09/16	FELIX DROESCH	3	SHARPS CREEK BASE CAMP/0700	SHARPS CREEK BASE CAMP/1900
E-42 ENG4 METHOW RIVER WILD FIRE		09/13	CINDY GAMEROS	3	SHARPS CREEK BASE CAMP/0700	SHARPS CREEK BASE CAMP/1900
E-88 EXC3 MARK JONES TRUCKING INC		09/16	CHAD BROWN	2	SHARPS CREEK BASE CAMP/0700	SHARPS CREEK BASE CAMP/1900
O-29 REMS 11 - BEYOND THE EDGE			JOE DECKER	4	SHARPS CREEK BASE CAMP/0700	SHARPS CREEK BASE CAMP/1900
O-87 MEDIC TEAM 21 SPEARHEAD MEDICS		09/16	BRENNEN HILL	2	SHARPS CREEK BASE CAMP/0700	SHARPS CREEK BASE CAMP/1900
E-3 AMBU 2 TRI COUNTY AMBULANCE SERVICE			ZACH TROMP	2	SHARPS CREEK BASE CAMP/0700	SHARPS CREEK BASE CAMP/1900
O-86 REAF		09/06	RACHAEL FREDBECK	1	SHARPS CREEK BASE CAMP/0700	SHARPS CREEK BASE CAMP/1900
O-87 REAF		09/06	JOHNATHAN HARDER	1	SHARPS CREEK BASE CAMP/0700	SHARPS CREEK BASE CAMP/1900
O- REAF		09/09	CHASE STREET	1	SHARPS CREEK BASE CAMP/0700	SHARPS CREEK BASE CAMP/1900
<b>8. Division/Group Communication Summary</b>						
Function	Channel	RX Frequency N/W	RX Tone/NAC	TX Frequency N/W	TX Tone/NAC	Mode
TACTICAL	3	168.6000	100.0	168.6000	100.0	A
COMMAND	7	170.0625	100.0	162.4375	100.0	A
COMMAND	8	169.6125	100.0	162.5125	100.0	A
AIR TO GROUND	13	165.9875		165.9875		A
AIR TO GROUND	14	173.5000		173.5000		A
<b>9. Prepared By (Resource Unit Leader)</b>			<b>Approved By (Planning Section Chief)</b>		<b>Date</b>	<b>Time</b>
MARGE HUTCHINSON			JILL JOHNSON		09/04/2023	1148

**Division/Group Assignment List (ICS 204 WF)**  
**Controlled Unclassified Information//Basic**

<b>1. Incident Name:</b>			<b>3.</b>			
UMPQUA FIRES			<b>Branch:</b>		<b>Division/Group</b>	
<b>2. Operational Period: DAY</b>			I - COTTAGE GROVE		D	
Date/Time From: 09/05/2023 0700 TUE		Date/Time To: 09/05/2023 1900 TUE				
<b>4. Operations Personnel</b>						
<b>OPERATIONS CHIEF</b>		KURT RANTA CODY ACORD (T)		<b>BRANCH DIRECTOR</b>		
<b>SAFETY OFFICERS</b>		TROY CORN JACK CATES; TAIJA CORSO		<b>DIVISION/GROUP SUPERVISOR</b>		JEFF LUCAS CARSON ZEPP (T)
<b>5. Resources Assigned this Period</b>						
Strike Team / Task Force / Resource Designator		LWD	Leader	Number Persons	Drop Off PT./Time	Pick Up PT./Time
<b>6. Control Operations/Work Assignments:</b>						
<p>TASK: Construct direct and indirect fireline and secure perimeter.  PURPOSE: Prevent fire from impacting values at risk including: communities to the west, commercial timberlands, and T &amp; E habitat.  END STATE: Fire is kept north of the 1745 Road and south of the 1746 Road to protect the values at risk through the remainder of the fire season.</p>						
<b>7. Special Instructions:</b>						
<p>For this DIV - add DINNER FIRE to all CTRs &amp; Shift tickets</p> <p>Chloeta Insurance Contract Engine will be doing structure protection / prep in the area of Row River Road / Brice Creek Road at the following 5 residences:  39440 &amp; 39618 Row River Road / 39910, 40186, &amp; 40297 Brice Creek Rd. Lead is JR Olson at 509-668-6437. Resource will attend morning Briefings and check in with divisions when entering fire area.</p>						
<b>8. Division/Group Communication Summary</b>						
Function	Channel	RX Frequency N/W	RX Tone/NAC	TX Frequency N/W	TX Tone/NAC	Mode
TACTICAL	3	168.6000	100.0	168.6000	100.0	A
COMMAND	7	170.0625	100.0	162.4375	100.0	A
COMMAND	8	169.6125	100.0	162.5125	100.0	A
AIR TO GROUND	13	165.9875		165.9875		A
AIR TO GROUND	14	173.5000		173.5000		A
<b>9. Prepared By (Resource Unit Leader)</b>			<b>Approved By (Planning Section Chief)</b>		<b>Date</b>	<b>Time</b>
MARGE HUTCHINSON			JILL JOHNSON		09/04/2023	1148

**Division/Group Assignment List (ICS 204 WF)**  
**Controlled Unclassified Information//Basic**

<b>1. Incident Name:</b>			<b>3.</b>			
UMPQUA FIRES			<b>Branch:</b>		<b>Division/Group</b>	
<b>2. Operational Period:</b> 0700 - 1900			BRANCH II - NORTH UMPQUA		DIV DD	
Date/Time From: 09/05/2023 0700 TUE		Date/Time To: 09/05/2023 1900 TUE				
<b>4. Operations Personnel</b>						
<b>OPERATIONS CHIEF</b>		KURT RANTA CODY ACORD (T)		<b>BRANCH DIRECTOR</b>		KENT CONTRERAS
<b>DIVISION/GROUP SUPERVISOR</b>		ZACH PALMER GEORGE HASLETT (T)		<b>SAFETY</b>		JACK CATES TROY CORN (T)
<b>5. Resources Assigned this Period</b>						
Strike Team / Task Force / Resource Designator		LWD	Leader	Number Persons	Drop Off PT./Time	Pick Up PT./Time
SOF O-1.84		09/12	JEFF HIGENS	1	STRADER ICP/0700	STRADER ICP/1930
TFLD(T) O-188		09/15	RUSSELL SHIELDS	1	STRADER ICP/0700	STRADER ICP/1930
HEQB O-199		09/16	RYAN MATHESON	1	STRADER ICP/0700	STRADER ICP/1930
FMOD PACIFIC RIDGELINE O-133		09/14	ADAM MILLER	2	STRADER ICP/0700	STRADER ICP/1930
CRW1 LONE PEAK C-4		09/13	CHRISTIAN BERNINGER	21	STRADER ICP/0700	STRADER ICP/1930
CRW1 ALTA C-12		09/12	TYLER	23	STRADER ICP/0700	STRADER ICP/1930
CRW1 IDAHO PAHNANDLE C-32		09/15	TANNER SCHWARTZ	23	STRADER ICP/0700	STRADER ICP/1930
CRW2 GRAYBACK FORESTRY C-33		09/15	ROBERT PONDELICK	20	STRADER ICP/0700	STRADER ICP/1930
ENG4 ICE E-3		09/10	BEN TITUS	3	STRADER ICP/0700	STRADER ICP/1930
ENG3 E-106		09/15	HOLDEN HILLIKER	3	STRADER ICP/0700	STRADER ICP/1930
DZR2 DUKE'S EQUIPMENT E-15		09/12	MATTHEW SVEEN	2	STRADER ICP/0700	STRADER ICP/1930
DZR2 JTN E-109		09/14	JEREMY GIESBRECHT	2	STRADER ICP/0700	STRADER ICP/1930
AMB2 *MED MOD* E-142		09/16	JOSHUA FARGAN	2	STRADER ICP/0700	STRADER ICP/1930
EMTP O-177		09/15	ANASTASIA KIME	1	STRADER ICP/0700	STRADER ICP/1930
EMPF O-62		09/11	JEFFERY KAISER	1	STRADER ICP/0700	STRADER ICP/1930
ARCH O-159		09/09	EMILY HARTWIG	1	STRADER ICP/0700	STRADER ICP/1930
O-145 REAF		09/14	KELSEY ISABEL KNOX	1	STRADER ICP/0700	STRADER ICP/1930
<b>8. Division/Group Communication Summary</b>						
Function	Channel	RX Frequency N/W	RX Tone/NAC	TX Frequency N/W	TX Tone/NAC	Mode
COMMAND	2	173.7125	167.9	162.6000	167.9	A
TACTICAL	5	168.0500	167.9	168.0500	167.9	A
AIR TO GROUND	12	167.1500		167.1500		A
AIR TO GROUND	13	170.2625		170.2625		A
AIR GUARD	16/20	168.6250		168.6250	110.9	A
<b>9. Prepared By (Resource Unit Leader)</b>			<b>Approved By (Planning Section Chief)</b>		<b>Date</b>	<b>Time</b>
SCOTT SANDINE RESL(T)			MARGE HUTCHINSON		09/04/2023	2030

## Division/Group Assignment List (ICS 204 WF)

Controlled Unclassified Information//Basic

<b>1. Incident Name:</b>				<b>3.</b>			
UMPQUA FIRES				<b>Branch:</b>		<b>Division/Group</b>	
<b>2. Operational Period:</b> 0700 - 1900				<b>BRANCH II - NORTH UMPQUA</b>		<b>DIV DD</b>	
Date/Time From: 09/05/2023 0700 TUE		Date/Time To: 09/05/2023 1900 TUE					
<b>4. Operations Personnel</b>							
<b>OPERATIONS CHIEF</b>		KURT RANTA CODY ACORD (T)		<b>BRANCH DIRECTOR</b>		KENT CONTRERAS	
<b>DIVISION/GROUP SUPERVISOR</b>		ZACH PALMER GEORGE HASLETT (T)		<b>SAFETY</b>		JACK CATES TROY CORN (T)	
<b>5. Resources Assigned this Period</b>							
Strike Team / Task Force / Resource Designator		LWD	Leader		Number Persons	Drop Off PT./Time	Pick Up PT./Time
REAF O-157		09/13	SOPHIA KIM		1	STRADER ICP/0700	STRADER ICP/1930
<b>6. Control Operations/Work Assignments:</b>							
<p>TASK: Look for opportunities to line and secure the fire's edge from the southwest corner of HiPower Creek to the 3803 Rd. Complete prep on indirect line off of the 3803 Rd.</p> <p>PURPOSE: To prevent fire from impacting nearby communities, private timberland, and critical infrastructure by limiting fire spread.</p> <p>END STATE: Fire is contained east of the forest boundary, west of the HiPower Bluffs and north of the indirect line connected to the 3803 Rd.</p>							
<b>7. Special Instructions:</b>							
<p>Survey and mitigate aerial hazards including live trees and snags as needed. Implement risk management processes in all tactical decisions. Utilize tactics that minimize impacts to private property. Avoid waterways with retardant. Use screens to reduce impact on Salmon/Steelhead protected populations.</p>							
<b>8. Division/Group Communication Summary</b>							
Function	Channel	RX Frequency N/W	RX Tone/NAC	TX Frequency N/W	TX Tone/NAC	Mode	
COMMAND	2	173.7125	167.9	162.6000	167.9	A	
TACTICAL	5	168.0500	167.9	168.0500	167.9	A	
AIR TO GROUND	12	167.1500		167.1500		A	
AIR TO GROUND	13	170.2625		170.2625		A	
AIR GUARD	16/20	168.6250		168.6250	110.9	A	
<b>9. Prepared By (Resource Unit Leader)</b>			<b>Approved By (Planning Section Chief)</b>			<b>Date</b>	<b>Time</b>
SCOTT SANDINE RESL(T)			MARGE HUTCHINSON			09/04/2023	2030



**Division/Group Assignment List (ICS 204 WF)**  
**Controlled Unclassified Information//Basic**

<b>1. Incident Name:</b>				<b>3.</b>		
UMPQUA FIRES				<b>Branch:</b>		<b>Division/Group</b>
<b>2. Operational Period:</b> 0700 - 1900				BRANCH II - NORTH UMPQUA		DIV EE
Date/Time From: 09/05/2023 0700 TUE		Date/Time To: 09/05/2023 1900 TUE				
<b>4. Operations Personnel</b>						
<b>OPERATIONS CHIEF</b>		KURT RANTA CODY ACORD (T)		<b>BRANCH DIRECTOR</b>		KENT CONTRERAS
<b>DIVISION/GROUP SUPERVISOR</b>		MCCHORD ELLIS (T)		<b>SAFETY</b>		JACK CATES TROY CORN (T)
<b>5. Resources Assigned this Period</b>						
Strike Team / Task Force / Resource Designator		LWD	Leader	Number Persons	Drop Off PT./Time	Pick Up PT./Time
SOF3(T) O-85		09/06	SEAN LOWRY	1	STRADER ICP/0700	STRADER ICP/1930
TFLD O-92		09/15	ERIC MARK	1	STRADER ICP/0700	STRADER ICP/1930
TFLD O-181		09/15	JANSON MARSHALL	1	STRADER ICP/0700	STRADER ICP/1930
HEQB O-98		09/05	KEVIN VICKERS	1	STRADER ICP/0700	STRADER ICP/1930
FMOD TIMBERTIPPERS O-2		09/11	GERALD FLOYD	2	STRADER ICP/0700	STRADER ICP/1930
FMOD CREEL O-104		09/12	ROBERT BATESON	2	STRADER ICP/0700	STRADER ICP/1930
CRW2 FRANCO C-7		09/10	JUAN R FRANCO	20	STRADER ICP/0700	STRADER ICP/1930
CRW2 SIERRA TORRES C-24		09/11	JESUS LUNA	20	STRADER ICP/0700	STRADER ICP/1930
ENG3 J-3 E-2		09/09	SHAWN MODICA	3	STRADER ICP/0700	STRADER ICP/1930
ENG4 PATRICK E-7		09/09	RANDY TEEL	3	STRADER ICP/0700	STRADER ICP/1930
ENG4 FRANCO REFORESTATION E-101		09/13	AUGUSTINE GARCIA	3	STRADER ICP/0700	STRADER ICP/1930
ENG4 TORRES E-5****AI****		09/10	OSCAR ARREDONDO	3	STRADER ICP/0700	STRADER ICP/1930
ENG4 C2C WILDFIRE E-2		09/18	BRYCE HOLBROOK	3	STRADER ICP/0700	STRADER ICP/1930
ENG6 METHOW E-6		09/11	ISAI ACEVADEO	3	STRADER ICP/0700	STRADER ICP/1930
ENG6 DIAMOND E-105		09/12	DANAIL EMEL	3	STRADER ICP/0700	STRADER ICP/1930
WTS2 DUECE E-2		09/04	MATT HOLMES	1	STRADER ICP/0700	STRADER ICP/1930
WTS2 RAINMAKER E-56		09/15	DAVID WILLIAMS	2	STRADER ICP/0700	STRADER ICP/1930
<b>8. Division/Group Communication Summary</b>						
Function	Channel	RX Frequency N/W	RX Tone/NAC	TX Frequency N/W	TX Tone/NAC	Mode
COMMAND	1	169.7500	167.9	167.1000	167.9	A
TACTICAL	6	168.2000	167.9	168.2000	167.9	A
AIR TO GROUND	12	167.1500		167.1500		A
AIR TO GROUND	13	170.2625		170.2625		A
AIR GUARD	16/20	168.6250		168.6250	110.9	A
<b>9. Prepared By (Resource Unit Leader)</b>			<b>Approved By (Planning Section Chief)</b>		<b>Date</b>	<b>Time</b>
SCOTT SANDINE RESL(T)			MARGE HUTCHINSON PCS		09/04/2023	2030

**Division/Group Assignment List (ICS 204 WF)**  
**Controlled Unclassified Information//Basic**

<b>1. Incident Name:</b>				<b>3.</b>		
UMPQUA FIRES				<b>Branch:</b>  <b>BRANCH II - NORTH UMPQUA</b>	<b>Division/Group</b>  <b>DIV EE</b>	
<b>2. Operational Period:</b> 0700 - 1900						
Date/Time From: 09/05/2023 0700 TUE		Date/Time To: 09/05/2023 1900 TUE				
<b>4. Operations Personnel</b>						
<b>OPERATIONS CHIEF</b>		KURT RANTA CODY ACORD (T)		<b>BRANCH DIRECTOR</b>		KENT CONTRERAS
<b>DIVISION/GROUP SUPERVISOR</b>		MCCHORD ELLIS (T)		<b>SAFETY</b>		JACK CATES TROY CORN (T)
<b>5. Resources Assigned this Period</b>						
Strike Team / Task Force / Resource Designator	LWD	Leader	Number Persons	Drop Off PT./Time	Pick Up PT./Time	
WTS2 ON THE GO H20 E-137	09/15	MAY MAY		STRADER ICP/0700	STRADER ICP/1930	
WTS2 COWBOY FIRE E-138	09/14	CHRIS ANDERSON	2	STRADER ICP/0700	STRADER ICP/1930	
DZR2 PARKHURST E-13	09/08	HARLON COX	2	STRADER ICP/0700	STRADER ICP/1930	
DZR2 JBL E-17			2	STRADER ICP/0700	STRADER ICP/1930	
DOZR2 BLACK NIGHT E-108	09/12	ALEX WUNCH	2	STRADER ICP/0700	STRADER ICP/1930	
MBM1 YOUNG LOGGING E-113	09/14	LUKE YOUNG		STRADER ICP/0700	STRADER ICP/1930	
EXCA MARSHALL E-114	09/12	KEVIN HOLMSTROM	2	STRADER ICP/0700	STRADER ICP/1930	
REMS 1 O-72	09/10	JOSHUA BANEZ	2	STRADER ICP/0700	STRADER ICP/1930	
AMB #1 E-145	09/09	KEN SHIELD	2	STRADER ICP/0700	STRADER ICP/1930	
READ O-156	09/09	SARAH BRAME	1	STRADER ICP/0700	STRADER ICP/1930	
READ O-144	09/13	KATIE WALSH	1	STRADER ICP/0700	STRADER ICP/1930	
O-108 REAF	09/13	CHASE BOLYARD	1	STRADER ICP/0700	STRADER ICP/1930	
O-159 REAF	09/09	EMILY JO HARTWIG	1	STRADER ICP/0700	STRADER ICP/1930	
O-145 REAF	09/14	KELSEY KNOX	1	STRADER ICP/0700	STRADER ICP/1930	
<b>6. Control Operations/Work Assignments:</b>						
TASK: Construct containment lines from the 3806 Rd along the perimeter to HiPower Bluffs. Improve control lines and mop up along 3806 Road to DP67. Continue prep along 300 Road.						
PURPOSE: To prevent fire from impacting values, such as nearby communities, private timberland, and critical infrastructure by limiting fire spread.						
END STATE: Fire is contained west of the 3806 Rd and 300 Road and north of HiPower Bluffs.						
<b>8. Division/Group Communication Summary</b>						
Function	Channel	RX Frequency N/W	RX Tone/NAC	TX Frequency N/W	TX Tone/NAC	Mode
COMMAND	1	169.7500	167.9	167.1000	167.9	A
TACTICAL	6	168.2000	167.9	168.2000	167.9	A
AIR TO GROUND	12	167.1500		167.1500		A
AIR TO GROUND	13	170.2625		170.2625		A
AIR GUARD	16/20	168.6250		168.6250	110.9	A
<b>9. Prepared By (Resource Unit Leader)</b>			<b>Approved By (Planning Section Chief)</b>		<b>Date</b>	<b>Time</b>
SCOTT SANDINE RESL(T)			MARGE HUTCHINSON PCS		09/04/2023	2030

## Division/Group Assignment List (ICS 204 WF)

Controlled Unclassified Information//Basic

<b>1. Incident Name:</b>		<b>3.</b>	
UMPQUA FIRES		<b>Branch:</b>  BRANCH II - NORTH UMPQUA	<b>Division/Group</b>  DIV EE
<b>2. Operational Period:</b> 0700 - 1900			
Date/Time From: 09/05/2023 0700 TUE	Date/Time To: 09/05/2023 1900 TUE		
<b>4. Operations Personnel</b>			
<b>OPERATIONS CHIEF</b>	KURT RANTA CODY ACORD (T)	<b>BRANCH DIRECTOR</b>	KENT CONTRERAS
<b>DIVISION/GROUP SUPERVISOR</b>	MCCHORD ELLIS (T)	<b>SAFETY</b>	JACK CATES TROY CORN (T)

**7. Special Instructions:**

Utilize Chilcoot repeater. Mitigate snag hazards and implement the risk management process in tactical decisions. Support tactics that minimize impacts to private timber property. Avoid waterways with retardant applications and reduce impact to Salmon / Steelhead protected populations.  
 \*\*\*\*AVAILABLE FOR IA RESPONSE\*\*\*\*

8. Division/Group Communication Summary						
Function	Channel	RX Frequency N/W	RX Tone/NAC	TX Frequency N/W	TX Tone/NAC	Mode
COMMAND	1	169.7500	167.9	167.1000	167.9	A
TACTICAL	6	168.2000	167.9	168.2000	167.9	A
AIR TO GROUND	12	167.1500		167.1500		A
AIR TO GROUND	13	170.2625		170.2625		A
AIR GUARD	16/20	168.6250		168.6250	110.9	A
<b>9. Prepared By (Resource Unit Leader)</b>		<b>Approved By (Planning Section Chief)</b>		<b>Date</b>	<b>Time</b>	
SCOTT SANDINE RESL(T)		MARGE HUTCHINSON PCS		09/04/2023	2030	

**Division/Group Assignment List (ICS 204 WF)**  
**Controlled Unclassified Information//Basic**

<b>1. Incident Name:</b>				<b>3.</b>		
UMPQUA FIRES				<b>Branch:</b>		<b>Division/Group</b>
<b>2. Operational Period:</b> 0700 - 1900				BRANCH II - NORTH UMPQUA		DIV HH
Date/Time From: 09/05/2023 0700 TUE		Date/Time To: 09/05/2023 1900 TUE				
<b>4. Operations Personnel</b>						
<b>OPERATIONS CHIEF</b>		KURT RANTA CODY ACORD (T)		<b>BRANCH DIRECTOR</b>		KENT CONTRERAS
<b>DIVISION/GROUP SUPERVISOR</b>		TREY MCNEIL		<b>SAFETY</b>		JACK CATES TROY CORN (T)
<b>5. Resources Assigned this Period</b>						
Strike Team / Task Force / Resource Designator		LWD	Leader	Number Persons	Drop Off PT./Time	Pick Up PT./Time
SOF 0-1.89		09/12	JEFF HIGENS	1	STRADER/0700	STRADER/1930
TFLD DFPA O-10004			TAYLOR SKINNER	1	STRADER/0700	STRADER/1930
TFLD O-100013		09/14	LOGAN DAVIS	1	STRADER/0700	STRADER/1930
STEN O-10005		09/09	ERIC VORE	1	STRADER/0700	STRADER/1930
STEN(T) O-10006		09/09	TAYLOR SPENCE	1	STRADER/0700	STRADER/1930
CRW2 BLUE MOUNTAIN C-10000		09/08	ESPINOZA	20	STRADER/0700	STRADER/1930
CRW2 PR REFORESTATION C-11		09/10	FIDEL	20	STRADER/0700	STRADER/1930
CRW2 PACIFIC OASIS C-10		09/10	ZANE PINDELL	20	STRADER/0700	STRADER/1930
ENG5 CAS E-3151 E-10001		09/09	MASON WYMAN	3	STRADER/0700	STRADER/1930
ENG5 ID-SWS SE6151 E-10002		09/09	ALEX COX	8	STRADER/0700	STRADER/1930
ENG5 ODF E-2351 E-10003		09/09	TYLER PRESSER	3	STRADER/0700	STRADER/1930
ENG6 ODF SJS E-3261 E-10004		09/09	RYAN JACKSON	3	STRADER/0700	STRADER/1930
ENG6 ODF CMS 43F52 E-10005		09/09	HUNTER DROEGMILLER	5	STRADER/0700	STRADER/1930
ENG4 D8 JET E-4		09/11	DAVID BERGETTE	3	STRADER/0700	STRADER/1930
ENG4 INBOUND E-102		09/15	MIKE HOLLOWAY	3	STRADER/0700	STRADER/1930
WTT1 TORCH FIRE E-110		09/12	JERROD MCCALL	2	STRADER/0700	STRADER/1930
<b>8. Division/Group Communication Summary</b>						
Function	Channel	RX Frequency N/W	RX Tone/NAC	TX Frequency N/W	TX Tone/NAC	Mode
COMMAND	2	173.6000	167.9	169.4625	167.9	A
TACTICAL	7	168.6000	167.9	168.6000	167.9	A
AIR TO GROUND	12	167.1500		167.1500		A
AIR TO GROUND	13	170.2625		170.2625		A
AIR GUARD	16/20	168.6250		168.6250	110.9	A
<b>9. Prepared By (Resource Unit Leader)</b>			<b>Approved By (Planning Section Chief)</b>		<b>Date</b>	<b>Time</b>
SCOTT SANDINE RESL(T)			MARGE HUTCHINSON PCS		09/04/2023	2030

**Division/Group Assignment List (ICS 204 WF)**  
**Controlled Unclassified Information//Basic**

<b>1. Incident Name:</b>			<b>3.</b>			
UMPQUA FIRES			<b>Branch:</b>		<b>Division/Group</b>	
<b>2. Operational Period:</b> 0700 - 1900			BRANCH II - NORTH UMPQUA		DIV HH	
Date/Time From: 09/05/2023 0700 TUE		Date/Time To: 09/05/2023 1900 TUE				
<b>4. Operations Personnel</b>						
<b>OPERATIONS CHIEF</b>		KURT RANTA CODY ACORD (T)		<b>BRANCH DIRECTOR</b>		KENT CONTRERAS
<b>DIVISION/GROUP SUPERVISOR</b>		TREY MCNEIL		<b>SAFETY</b>		JACK CATES TROY CORN (T)
<b>5. Resources Assigned this Period</b>						
Strike Team / Task Force / Resource Designator		LWD	Leader	Number Persons	Drop Off PT./Time	Pick Up PT./Time
WTT1 HEATSEEKERS E-111		09/13	JARED MUNDELL	2	STRADER/0700	STRADER/1930
WTS2 B&B ROADS E-10008		09/08	JAMES ENGLISH	1	STRADER/0700	STRADER/1930
EMTF O-57		09/11	MELISSA MARTINEZ	1	STRADER/0700	STRADER/1930
EMTF O-59		09/11	JORJA WELCH	1	STRADER/0700	STRADER/1930
EMPF O-174		09/18	GREG GIFFORD	1	STRADER/0700	STRADER/1930
O-159 REAF		09/09	EMILY JO HARTWIG	1	STRADER/0700	STRADER/1930
O-145 REAF		09/14	KELSEY KNOX	1	STRADER/0700	STRADER/1930
<b>6. Control Operations/Work Assignments:</b>						
<p>TASK: Continue mop-up and securing along HiPower Creek. Continue lining and securing fire edge in the head of HiPower Creek</p> <p>PURPOSE: To prevent fire from impacting values, such as nearby communities, private timberland, and critical infrastructure by limiting fire spread.</p> <p>END STATE: Fire is contained along existing fireline in HiPower Creek, and south of the ridge line above the head of HiPower Creek.</p>						
<b>7. Special Instructions:</b>						
Mitigate aerial hazards, both standing live and snag trees. Survey work areas and Implement the risk management process in all tactical decisions. Support tactics that minimize impacts to private timber property. Avoid waterways with retardant applications and use screens to reduce impact to Salmon / Steelhead protected populations. SOFR Mike Goyette and SOF3(T) Sean Lowry will float between Div. H and Contingency						
<b>8. Division/Group Communication Summary</b>						
Function	Channel	RX Frequency N/W	RX Tone/NAC	TX Frequency N/W	TX Tone/NAC	Mode
COMMAND	2	173.6000	167.9	169.4625	167.9	A
TACTICAL	7	168.6000	167.9	168.6000	167.9	A
AIR TO GROUND	12	167.1500		167.1500		A
AIR TO GROUND	13	170.2625		170.2625		A
AIR GUARD	16/20	168.6250		168.6250	110.9	A
<b>9. Prepared By (Resource Unit Leader)</b>			<b>Approved By (Planning Section Chief)</b>		<b>Date</b>	<b>Time</b>
SCOTT SANDINE RESL(T)			MARGE HUTCHINSON PCS		09/04/2023	2030



**Division/Group Assignment List (ICS 204 WF)**  
**Controlled Unclassified Information//Basic**

<b>1. Incident Name:</b>			<b>3.</b>			
UMPQUA FIRES			<b>Branch:</b>		<b>Division/Group</b>	
<b>2. Operational Period:</b> 0700 - 1900			BRANCH II - NORTH UMPQUA		DIV JJ	
Date/Time From: 09/05/2023 0700 TUE		Date/Time To: 09/05/2023 1900 TUE				
<b>4. Operations Personnel</b>						
<b>OPERATIONS CHIEF</b>		KURT RANTA CODY ACORD (T)		<b>BRANCH DIRECTOR</b>		KENT CONTRERAS
<b>DIVISION/GROUP SUPERVISOR</b>		HINDS		<b>SAFETY</b>		JACK CATES TROY CORN (T)
<b>5. Resources Assigned this Period</b>						
Strike Team / Task Force / Resource Designator		LWD	Leader	Number Persons	Drop Off PT./Time	Pick Up PT./Time
SOF O-1.65		09/12	JOSH NORTHRUP	1	STRADER ICP/0700	STRADER ICP/1930
FMOD C&K O-205		09/09	RICKY HUNT	2	STRADER ICP/0700	STRADER ICP/1930
CRW1 MIDNIGHT SUN C-1		09/10	ANDREW CULBERTSON	20	STRADER ICP/0700	STRADER ICP/1930
CRW2 FRANCO C-3 *****AVAILABLE FOR IA*****		09/10	JORGE GUTIERREZ	20	STRADER ICP/0700	STRADER ICP/1930
CRW2 RED ROCK REGULARS C-39		09/11	JONATHAN BROOKS	21	STRADER ICP/0700	STRADER ICP/1930
ENG6 METHOW RIVER E-8			CLAYTON BELL	3	STRADER ICP/0700	STRADER ICP/1930
ENG6 BLACK PINE E-11		09/16	JOSEPH BEATTY	3	STRADER ICP/0700	STRADER ICP/1930
ENG4 A&H FORESTRY E-103		09/14	DANIEL JAMES	3	STRADER ICP/0700	STRADER ICP/1930
WTS2 WESTERN E-12		09/16	RICHARD DAUGHERTY	1	STRADER ICP/0700	STRADER ICP/1930
CHP2 IRA TORRES E-10016		09/14	ADAN CHAVEZ	3	STRADER ICP/0700	STRADER ICP/1930
AMB2 PARAMEDICS**AMBU#2** E-32		09/12	SETH CRIBB	2	STRADER ICP/0700	STRADER ICP/1930
EMTF O-58		09/11	SOREN CAUDILL	1	STRADER ICP/0700	STRADER ICP/1930
EMPF O-64		09/11	RICH DOBSON	1	STRADER ICP/0700	STRADER ICP/1930
O-108 REAF		09/13	CHASE BOLYARD	1	STRADER ICP/0700	STRADER ICP/1930
REAF O-144		09/13	KATIE WALSH	1	STRADER ICP/0700	STRADER ICP/1930
<b>8. Division/Group Communication Summary</b>						
Function	Channel	RX Frequency N/W	RX Tone/NAC	TX Frequency N/W	TX Tone/NAC	Mode
COMMAND	2	173.7125	167.9	162.6000	167.9	A
TACTICAL	9	166.7750	167.9	166.7750	167.9	A
AIR TO GROUND	12	167.1500		167.1500		A
AIR TO GROUND	13	170.2625		170.2625		A
AIR GUARD	16/20	168.6250		168.6250	110.9	A
<b>9. Prepared By (Resource Unit Leader)</b>			<b>Approved By (Planning Section Chief)</b>		<b>Date</b>	<b>Time</b>
SCOTT SANDINE(T)			MARGE HUTHINSON PCS		09/04/2023	2030

## Division/Group Assignment List (ICS 204 WF)

Controlled Unclassified Information//Basic

<b>1. Incident Name:</b>				<b>3.</b>			
UMPQUA FIRES				<b>Branch:</b>		<b>Division/Group</b>	
<b>2. Operational Period:</b> 0700 - 1900				<b>BRANCH II - NORTH UMPQUA</b>		<b>DIV JJ</b>	
Date/Time From: 09/05/2023 0700 TUE		Date/Time To: 09/05/2023 1900 TUE					
<b>4. Operations Personnel</b>							
<b>OPERATIONS CHIEF</b>		KURT RANTA CODY ACORD (T)		<b>BRANCH DIRECTOR</b>		KENT CONTRERAS	
<b>DIVISION/GROUP SUPERVISOR</b>		HINDS		<b>SAFETY</b>		JACK CATES TROY CORN (T)	
<b>5. Resources Assigned this Period</b>							
Strike Team / Task Force / Resource Designator		LWD	Leader	Number Persons	Drop Off PT./Time	Pick Up PT./Time	
<b>6. Control Operations/Work Assignments:</b>							
<p>TASK: Secure and mop-up fire edge from DP67 to 3806 Rd. Scout and construct direct line from 3806 Rd. into the head of HiPower Creek.</p> <p>PURPOSE: To prevent fire from impacting values, such as nearby communities, private timberland, and critical infrastructure by limiting fire spread.</p> <p>END STATE: Fire is contained from DP67 to the 3806 Rd and southwest of the 3806 Rd to DP66.</p>							
<b>7. Special Instructions:</b>							
<p>Mitigate aerial hazards, both standing live and snag trees. Survey work areas and Implement the risk management process in all tactical decisions. Support tactics that minimize impacts to private timber property. Avoid waterways with retardant applications and use screens to reduce impact to Salmon / Steelhead protected populations. SOF2 Lowry will float between Div E and Div J.</p> <p>*****AVAILABLE FOR IA RESPONSE*****</p>							
<b>8. Division/Group Communication Summary</b>							
Function	Channel	RX Frequency N/W	RX Tone/NAC	TX Frequency N/W	TX Tone/NAC	Mode	
COMMAND	2	173.7125	167.9	162.6000	167.9	A	
TACTICAL	9	166.7750	167.9	166.7750	167.9	A	
AIR TO GROUND	12	167.1500		167.1500		A	
AIR TO GROUND	13	170.2625		170.2625		A	
AIR GUARD	16/20	168.6250		168.6250	110.9	A	
<b>9. Prepared By (Resource Unit Leader)</b>			<b>Approved By (Planning Section Chief)</b>			<b>Date</b>	<b>Time</b>
SCOTT SANDINE(T)			MARGE HUTHINSON PCS			09/04/2023	2030

**Division/Group Assignment List (ICS 204 WF)**  
**Controlled Unclassified Information//Basic**

<b>1. Incident Name:</b>			<b>3.</b>			
UMPQUA FIRES			<b>Branch:</b>		<b>Division/Group</b>	
<b>2. Operational Period:</b> 0700 - 1900			<b>BRANCH II - NORTH UMPQUA</b>		<b>DIV S / W</b>	
Date/Time From: 09/05/2023 0700 TUE		Date/Time To: 09/05/2023 1900 TUE				
<b>4. Operations Personnel</b>						
<b>OPERATIONS CHIEF</b>		KURT RANTA CODY ACORD (T)		<b>BRANCH DIRECTOR</b>		KENT CONTRERAS
<b>DIVISION/GROUP SUPERVISOR</b>		AARON SCHUMACHER TY OLIVER (T)		<b>AIR OPERATIONS</b>		KYLE BIENSCHROTH
<b>5. Resources Assigned this Period</b>						
Strike Team / Task Force / Resource Designator		LWD	Leader	Number Persons	Drop Off PT./Time	Pick Up PT./Time
SOF O-1.65		09/12	JOSH NORTHRUP	1	STRADER ICP/0700	STRADER ICP/1930
WFM METOLI O-187		09/14	NEAL FAIR	9	STRADER ICP/0700	STRADER ICP/1930
FMOD MML CUTTING O-18****IA****		09/16	JASON FAUGHT	2	STRADER ICP/0700	STRADER ICP/1930
CRW2 FUEGO C-4		09/06	FERMIN HERRERA	20	STRADER ICP/0700	STRADER ICP/1930
CRW2 FRANCO C-42 *****AVAILABLE FOR IA*****		09/10	JERRY PATRICIO	20	STRADER ICP/0700	STRADER ICP/1930
ENG4 J3 E-2		09/10	CARL MARTINEZ	3	STRADER ICP/0700	STRADER ICP/1930
CAIP E-10017					STRADER ICP/0700	STRADER ICP/1930
REMS 2 O-73		09/11	ANDREW PADDISON	4	STRADER ICP/0700	STRADER ICP/1930
AMB2 *AMBO#3* E-143		09/17	TAYTYANA LOGAN	2	STRADER ICP/0700	STRADER ICP/1930
EMPF O-61		09/11	MARCOS GARCIA	1	STRADER ICP/0700	STRADER ICP/1930
EMPF O-63		09/11	TOM GIBSON	1	STRADER ICP/0700	STRADER ICP/1930
ARCH O-159			EMILY HARTWIG	1	STRADER ICP/0700	STRADER ICP/1930
REAF O-145		09/14	KELSEY KNOW	1	STRADER ICP/0700	STRADER ICP/1930
REAF			MARK SEYDLO	1	STRADER ICP/0700	STRADER ICP/1930
<b>6. Control Operations/Work Assignments:</b>						
TASK: Complete line on north part of Ridge fire. Look for opportunities to secure fire edge in northeast corner of fire below 5851 Rd. Begin repair on 5851 Rd. Continue mop-up and securing on remainder of fire.						
PURPOSE: Prevent impact to nearby values by limiting fire spread towards Fuller Lake, the Willamette NF, and Boulder Creek Wilderness.						
END STATE: Fire is contained east of Fuller Lake, and north and west of the 5851 Rd.						
<b>8. Division/Group Communication Summary</b>						
Function	Channel	RX Frequency N/W	RX Tone/NAC	TX Frequency N/W	TX Tone/NAC	Mode
COMMAND	2	173.6000	167.9	169.4625	167.9	A
TACTICAL	10	168.2500	167.9	168.2500	167.9	A
AIR TO GROUND	12	167.1500		167.1500		A
AIR TO GROUND	14	168.4250		168.4250		A
AIR GUARD	16/20	168.6250		168.6250	110.9	A
<b>9. Prepared By (Resource Unit Leader)</b>			<b>Approved By (Planning Section Chief)</b>		<b>Date</b>	<b>Time</b>
SCOTT SANDINE(T)			MARGE HUTCHINSON		09/04/2023	2030

## Division/Group Assignment List (ICS 204 WF)

Controlled Unclassified Information//Basic

<b>1. Incident Name:</b>		<b>3.</b>	
UMPQUA FIRES		<b>Branch:</b>  <b>BRANCH II - NORTH UMPQUA</b>	<b>Division/Group</b>  <b>DIV S / W</b>
<b>2. Operational Period:</b> <b>0700 - 1900</b>			
Date/Time From: 09/05/2023 0700                   TUE	Date/Time To: 09/05/2023 1900                   TUE		
<b>4. Operations Personnel</b>			
<b>OPERATIONS CHIEF</b>	KURT RANTA CODY ACORD (T)	<b>BRANCH DIRECTOR</b>	KENT CONTRERAS
<b>DIVISION/GROUP SUPERVISOR</b>	AARON SCHUMACHER TY OLIVER (T)	<b>AIR OPERATIONS</b>	KYLE BIENSCHROTH

**7. Special Instructions:**

Mitigate aerial hazards, both standing live and snag trees. Survey work areas and Implement the risk management process in all tactical decisions. Support tactics that minimize impacts to private timber property. Avoid waterways with retardant applications and use screens to reduce impact to Salmon / Steelhead protected populations.

\*\*\*\*\*AVAILABLE FOR IA RESPONSE\*\*\*\*\*

8. Division/Group Communication Summary						
Function	Channel	RX Frequency N/W	RX Tone/NAC	TX Frequency N/W	TX Tone/NAC	Mode
COMMAND	2	173.6000	167.9	169.4625	167.9	A
TACTICAL	10	168.2500	167.9	168.2500	167.9	A
AIR TO GROUND	12	167.1500		167.1500		A
AIR TO GROUND	14	168.4250		168.4250		A
AIR GUARD	16/20	168.6250		168.6250	110.9	A
<b>9. Prepared By (Resource Unit Leader)</b>			<b>Approved By (Planning Section Chief)</b>		<b>Date</b>	<b>Time</b>
SCOTT SANDINE(T)			MARGE HUTCHINSON		09/04/2023	2030

**Division/Group Assignment List (ICS 204 WF)**  
**Controlled Unclassified Information//Basic**

<b>1. Incident Name:</b>			<b>3.</b>			
UMPQUA FIRES			<b>Branch:</b>		<b>Division/Group</b>	
<b>2. Operational Period:</b> 0700 - 1900			BRANCH II - NORTH UMPQUA		CONTINGENCY	
Date/Time From: 09/05/2023 0700 TUE		Date/Time To: 09/05/2023 1900 TUE				
<b>4. Operations Personnel</b>						
<b>OPERATIONS CHIEF</b>		KURT RANTA CODY ACORD (T)		<b>BRANCH DIRECTOR</b>		KENT CONTRERAS
<b>DIVISION/GROUP SUPERVISOR</b>		JUREZ		<b>SAFETY OFFICERS</b>		JACK CATES TROY CORN
<b>5. Resources Assigned this Period</b>						
Strike Team / Task Force / Resource Designator		LWD	Leader	Number Persons	Drop Off PT./Time	Pick Up PT./Time
SOFR O-90		09/14	MIKE GOYETTE	1	STRADER ICP/0700	STRADER ICP/1930
HEQB O-198		09/16	ANDRES JUREZ	1	STRADER ICP/0700	STRADER ICP/1930
FMOD C&K WILDLAND O-132		09/12	KEVIN MAYFIELD	2	STRADER ICP/0700	STRADER ICP/1930
CRW2 FRANCO C-2		09/11	JOSE MENDOZA	20	STRADER ICP/0700	STRADER ICP/1930
CRW2 T-REX C-6		09/20	IGNACIO ROJAS	20	STRADER ICP/0700	STRADER ICP/1930
CRW2 JLS C-9		09/10	LOUIS CORRIA	20	STRADER ICP/0700	STRADER ICP/1930
CRW2 DUST BUSTERS C-23		09/11	CALEB TAYLOR	20	STRADER ICP/0700	STRADER ICP/1930
ENG UPF E-414 *****AVAILABLE IA*****		09/07	GREG RUDELBACH	5	STRADER ICP/0700	STRADER ICP/1930
ENG5 RAINIER WILDFIRE E-4		09/06	CHRIS SARABRIA	3	STRADER ICP/0700	STRADER ICP/1930
ENG6 NORTHRIDGE E-3		09/09	BRITTANY NORDHAGEN	3	STRADER ICP/0700	STRADER ICP/1930
ENG6 WOODPECKER E-104		09/15	MICHALE HERRIN	3	STRADER ICP/0700	STRADER ICP/1930
WTT1 HYDROTACTICAL E-112		09/14	JOSEPH SHAW	2	STRADER ICP/0700	STRADER ICP/1930
MBM2 DUKE EQUIPMENT E-151		09/17	CONRAD SCHELER	2	STRADER ICP/0700	STRADER ICP/1930
MBM2 DUKE EQUIPMENT E-152		09/17	CHRIS BOLES	2	STRADER ICP/0700	STRADER ICP/1930
CHP2 IRA TORRES E-10017		09/14	VICTOR URBIETA	2	STRADER ICP/0700	STRADER ICP/1930
<b>8. Division/Group Communication Summary</b>						
Function	Channel	RX Frequency N/W	RX Tone/NAC	TX Frequency N/W	TX Tone/NAC	Mode
COMMAND	4	169.8375	167.9	162.4625	167.9	A
TACTICAL	8	166.7250	167.9	166.7250	167.9	A
AIR TO GROUND	12	167.1500		167.1500		A
AIR TO GROUND	13	170.2625		170.2625		A
AIR GUARD	16/20	168.6250		168.6250	110.9	A
<b>9. Prepared By (Resource Unit Leader)</b>			<b>Approved By (Planning Section Chief)</b>		<b>Date</b>	<b>Time</b>
SCOTT SANDINE RESL(T)			MARGE HUTCHINSON PCS		09/04/2023	2030



**Division/Group Assignment List (ICS 204 WF)**  
**Controlled Unclassified Information//Basic**

<b>1. Incident Name:</b>			<b>3.</b>			
UMPQUA FIRES			<b>Branch:</b>		<b>Division/Group</b>	
<b>2. Operational Period:</b> 0700 - 1900			BRANCH II - NORTH UMPQUA		CONTINGENCY	
Date/Time From: 09/05/2023 0700 TUE		Date/Time To: 09/05/2023 1900 TUE				
<b>4. Operations Personnel</b>						
<b>OPERATIONS CHIEF</b>		KURT RANTA CODY ACORD (T)		<b>BRANCH DIRECTOR</b>		KENT CONTRERAS
<b>DIVISION/GROUP SUPERVISOR</b>		JUREZ		<b>SAFETY OFFICERS</b>		JACK CATES TROY CORN
<b>5. Resources Assigned this Period</b>						
Strike Team / Task Force / Resource Designator		LWD	Leader	Number Persons	Drop Off PT./Time	Pick Up PT./Time
REAF O-108		09/12	CHASE BOLYARD	1	STRADER ICP/0700	STRADER ICP/1930
REAF O-86		09/06	RACHAEL FREDBACK	1	STRADER ICP/0700	STRADER ICP/1930
REAF O-87		09/06	JOHNATHAN HARDER	1	STRADER ICP/0700	STRADER ICP/1930
CAIP E-10017						
<b>6. Control Operations/Work Assignments:</b>						
TASK: Prep 38 Road from 23 Road junction to 3809 Rd. and up 3809 Rd. to 3806 Rd. junction with fallers, masticators and handcrews.						
PURPOSE: To prevent fire from impacting values, such as nearby communities, private timberland, and critical infrastructure by establishing indirect control lines.						
END STATE: Indirect control lines are established and ready to be fired.						
<b>7. Special Instructions:</b>						
Mitigate aerial hazards, both standing live and snag trees. Survey work areas and Implement the risk management process in all tactical decisions. Support tactics that minimize impacts to private timber property. Avoid waterways with retardant applications and use screens to reduce impact to Salmon / Steelhead protected populations. SOFR Mike Goyette and SOF3(T) Sean Lowry will float between Div. H and Contingency						
*****AVAILABLE FOR IA*****						
<b>8. Division/Group Communication Summary</b>						
Function	Channel	RX Frequency N/W	RX Tone/NAC	TX Frequency N/W	TX Tone/NAC	Mode
COMMAND	4	169.8375	167.9	162.4625	167.9	A
TACTICAL	8	166.7250	167.9	166.7250	167.9	A
AIR TO GROUND	12	167.1500		167.1500		A
AIR TO GROUND	13	170.2625		170.2625		A
AIR GUARD	16/20	168.6250		168.6250	110.9	A
<b>9. Prepared By (Resource Unit Leader)</b>			<b>Approved By (Planning Section Chief)</b>		<b>Date</b>	<b>Time</b>
SCOTT SANDINE RESL(T)			MARGE HUTCHINSON PCS		09/04/2023	2030

<b>AIR OPERATIONS SUMMARY 220</b>		Prepared/Approved: Paul Balfour	Prepared: 9/04/2023	Prepared Time: 1600 hrs.	
<b>1. INCIDENT NAME:</b> UMPQUA FIRES	<b>2. OPERATIONAL PERIOD</b> 09/05/2023	<b>START TIME:</b> 0700	<b>END TIME:</b> 1900	<b>SUNRISE:</b> 0640	<b>SUNSET:</b> 1941

<p><b>3. REMARKS</b> (Safety Notes, Hazards, Air Operations Special Equipment, etc.).  <b>Smoky conditions * Steep terrain * Shadow effects</b>  <b>Only use approved dip sites. Do not cross contaminate water sources without sanitizing bucket/snorkel. All GPS data to be collected in DEGREES MINUTES, DECIMAL MINUTES.</b>                  Avoid foam within 300' of waterways or bodies of water. Notify AOBD if this is not achieved.                  Send aircraft costs daily to: <a href="mailto:2023.chilcoot.finance@firenet.gov">2023.chilcoot.finance@firenet.gov</a> and cc to <a href="mailto:2023.chilcoot.airops@firenet.gov">2023.chilcoot.airops@firenet.gov</a>.</p>	<p><b>4. READY ALERT AIRCRAFT:</b>  <b>N234BH Yellowstone Short Haul:</b>  <b>@Grants Pass</b>   <b>ORNG Medivac: Roseburg</b>  <b>Order through RICC</b>                   See Medical Plan on last page of IAP.</p>	<p><b>5.TFR: #3/2352 (A-2) B-1</b>  <b>Freq 121.3750</b>  <b>Operational 1500-0400 UTC</b>  <b>TFR: #3/2383 B-2</b>  <b>Freq:132.525</b>  <b>Surface to 8500 MSL</b></p>
--	---	--

6. PERSONNEL			7. FREQUENCIES			8. FIXED-WING Avail/ Type/ Make-Model/ N#/ Base		
NAME	PHONE #		AM	FM				
Helibase			A/A TFR and Primary Branch 1	121.3750	<p style="text-align: center;"><b>AIRTANKERS: ORDER THRU ATGS</b></p> <p><b>ATGS – order through Roseburg Dispatch</b></p> <p><b>Landing Sites on Fire: See pilot map</b>                      Lying Cr Helispot: 43°42.698'N X 122°42.114'W 1224ft                      Cottage Grove: 43°48.246'N X 123°1.923'W 641ft</p> <p style="text-align: center;"><b>Tank Dips: See Pilot Map</b></p>			
			A/G Primary Branch 1	165.9875				
			A/G Secondary Branch 1	173.5000				
AOBD	Paul Balfour	509-993-8739	A/A TFR and Primary Branch 2	132.525				
ASGS(t)	Dave Matheny	907-378-4792	A/G Primary Branch 2	167.1500				
ASGS(t)	Simon Driskell	541-728-8724	A/G Secondary Branch 2	170.2625				
ATGS			Deck (A- Tone-156.7 (TX/RX)	163.1000				
HEBM	Lynn Correa	760-417-1220						
HEBM(t)			IA A/G White ODF T-156.7 (T/R)	151.310				
ORRIC	Aircraft Desk	541-957-3325	IA A/G 49 USFS	168.0375				
UAO	Jim Dotson	307-413-2024	VMED29 Tone 156.7 (TX/RX)	155.3475				
Willy Acton UAO: 208-507-0942			CTAF	122.8				
9FF Joe Bradshaw: 775-271-9284 HMGB Cottage Grove			Air Guard Tone 110.9 (TX)	168.6250				

FAA N#	T Y	MAKE/ MODEL	BASE	START	AVAIL	REMARKS	FAA N#	T Y	MAKE/ MODEL	BASE	START	AVAIL	REMARKS
N274TH (A-9)	1	UH-60	Glide	0700	0800		N519FF (A-6)	3	AS 350	Cottage	0800	0900	6 personnel
526MW (A-10)	1	KMAX	Glide	0700	0800								
N933CH(A-39)	2	Bell 205 A1	Glide	0700	0800	7 personnel							
H377PA(A-20)	2	Bell 212	Glide	0700	0800	8 personnel							
32HX (A-19)	3	AS 350	Glide	0700	0800	11 personnel							

# INCIDENT RADIO COMMUNICATIONS PLAN (ICS 205)

Controlled Unclassified Information//Basic

<b>1. Incident Name:</b>	<b>2. Date/Time Prepared:</b>	<b>3. Operational Period: DAY</b>	
UMPQUA FIRES BR I - Cottage Grove	Date: 09/04/2023 Time: 2000	Date/Time From: 09/05/2023 0700 TUE	Date/Time To: 09/05/2023 1900 TUE

**4. Basic Radio Channel Use:**

Zone Group	Ch #	Function	Channel Name/Trunked Radio System Talkgroup	Assignment	RX Freq	RX Tone/NAC	TX Freq	TX Tone/NAC	Mode (A,D, or M)	Remarks
	1	TACTICAL	TAC 1	DIV A/C	168.0500	100.0	168.0500	100.0	A	BRICE FIRE
	3	TACTICAL	TAC 3	DIV D	168.6000	100.0	168.6000	100.0	A	DINNER FIRE
	4	TACTICAL	TAC 4	DIV S/Z	166.7250	100.0	166.7250	100.0	A	GRIZZLY FIRE
	6	TACTICAL	TAC 6	STRUCTURE GROUP	168.2500	100.0	168.2500	100.0	A	GRIZZLY FIRE
	7	COMMAND	CMD 7	ALL DIVS	170.0625	100.0	162.4375	100.0	A	FAIRVIEW LO
	8	COMMAND	CMD 8	ALL DIVS	169.6125	100.0	162.5125	100.0	A	
	10	COMMAND	FAIRVIEW	IA LOCAL DISPATCH	170.5500	103.5	164.8000	173.8	A	ROSEBURG
	11	TACTICAL	OFD RED	IA ONLY	151.3400	156.7	151.3400	156.7	A	
	12	AIR TO GROUND	A/G 49	IA ONLY	168.0375		168.0375		A	
	13	AIR TO GROUND	A/G PRI	ALL FIRES	165.9875		165.9875		A	
	15	AIR TO GROUND	VMED 29	MEDICAL EVAC ONLY	155.3475	156.7	155.3475	156.7	A	
	16	AIR GUARD	AIRGUARD	EMER AIR OPS ONLY	168.6250		168.6250	110.9	A	

**5. Special Instructions:** COMMUNICATIONS CELL LINE 208-891-7538

<b>6. Prepared By</b> (Communications Unit Leader)	Name: MISSY PARKER, COML	Signature: <i>Missy Parker</i>
ICS 205	IAP Page	Date/Time: 09/04/2023 2000

# INCIDENT RADIO COMMUNICATIONS PLAN (ICS 205)

Controlled Unclassified Information//Basic

<b>1. Incident Name:</b>	<b>2. Date/Time Prepared:</b>	<b>3. Operational Period:</b> 0700 - 1900	
UMPQUA FIRES BR II - North Umpqua	Date: 09/04/2023 Time: 2000	Date/Time From: 09/05/2023 0700 TUE	Date/Time To: 09/05/2023 1900 TUE

**4. Basic Radio Channel Use:**

Zone Group	Ch #	Function	Channel Name/Trunked Radio System Talkgroup	Assignment	RX Freq	RX Tone/NAC	TX Freq	TX Tone/NAC	Mode (A,D, or M)	Remarks
1	1	COMMAND	NIFC C5	ALL DIVISIONS	169.7500	167.9	167.1000	167.9	A	SCOTT MOUNTAIN
1	2	COMMAND	NIFC C59	ALL DIVISIONS	173.7125	167.9	162.6000	167.9	A	PIG IRON LOOKOUT
1	3	COMMAND	UNASSIGNED	UNASSIGNED						UNASSIGNED
1	4	COMMAND	NIFC C62	ALL DIVISIONS	169.8375	167.9	162.4625	167.9	A	REDBUTTE LOOKOUT
1	5	TACTICAL	NIFC T1	DIV DD	168.0500	167.9	168.0500	167.9	A	DIV DD
1	6	TACTICAL	NIFC T2	DIV EE	168.2000	167.9	168.2000	167.9	A	DIV EE
1	7	TACTICAL	NIFC T3	DIV HH	168.6000	167.9	168.6000	167.9	A	DIV HH
1	8	TACTICAL	NIFC T4	CONTINGENCY	166.7250	167.9	166.7250	167.9	A	CONTINGENCY
1	9	TACTICAL	NIFC T5	DIV JJ	166.7750	167.9	166.7750	167.9	A	DIV JJ
1	10	TACTICAL	NIFC T6	DIV S / W	168.2500	167.9	168.2500	167.9	A	DIV S / W
1	11	COMMAND	CHILCOOT	ROSEBURG DISPATCH	170.5500	103.5	164.8000	192.8	A	ROSEBURG DISPATCH
1	12	AIR TO GROUND	A/G CMD	ALL DIVS	167.1500		167.1500		A	A / G PRI
1	13									
1	14									
1	15	AIR TO GROUND	VMED 29	MEDICAL / EVAC	155.3475	156.7	155.3475	156.7	A	MEDICAL / EVAC
1	16/20	AIR GUARD	AIRGUARD	ALL DIVISIONS	168.6250		168.6250	110.9	A	AIRGUARD / EMERGENCY

**5. Special Instructions:** CHILCOOT COMMUNICATIONS: 949-573-5269 / CURRENT CLONE VERSION: CHIL831

<b>6. Prepared By</b> (Communications Unit Leader)	Name: MISSY PARKER, COML	Signature: <i>Missy Parker</i>
ICS 205	IAP Page	Date/Time: 09/04/2023 2000

# INCIDENT RADIO COMMUNICATIONS PLAN (ICS 205)

Controlled Unclassified Information//Basic

<b>1. Incident Name:</b>	<b>2. Date/Time Prepared:</b>	<b>3. Operational Period: DAY</b>	
UMPQUA FIRES - Initial Attach	Date: 09/04/2023 Time: 2000	Date/Time From: 09/05/2023 0700 TUE	Date/Time To: 09/05/2023 1900 TUE

**4. Basic Radio Channel Use:**

Zone Group	Ch #	Function	Channel Name/Trunked Radio System Talkgroup	Assignment	RX Freq	RX Tone/NAC	TX Freq	TX Tone/NAC	Mode (A,D, or M)	Remarks
	1	TACTICAL	NORT DIR	UMP NORTH DIRECT	170.5500	103.5	170.5500	103.5	A	
	2	COMMAND	REDBUTTE	UPF N RED BUTTE RPTR	170.5500	103.5	164.8000	179.9	A	
	3	COMMAND	CHILCOOT	UPF N CHILCOOT RPTR	170.5500	103.5	164.8000	192.8	A	
	4	COMMAND	FAIRVIEW	IA LOCAL DISPATCH	170.5500	103.5	164.8000	173.8	A	ROSEBURG
	5	COMMAND	N DOEHD	UPF N DOEHEAD	170.5500	103.5	164.8000	186.2	A	
	6	TACTICAL	UPF PRJ	UPF PROJECT	163.7125	103.5	163.7125	103.5	A	
	7	COMMAND	ROD LANE	ROSEBURG BLM LANE MT RPTR	170.0250		166.3000	107.2	A	
	8	TACTICAL	UPF REC	UPF DL RECREATION	168.3875	103.5	168.3875	103.5	A	
	9	COMMAND	INTEROP	DOUGLAS CO. INTEROP	152.6600	151.4	157.8600	110.9	A	
	10	COMMAND	CINNAMON	UNF CINNAMON BUTTE RPTR	171.4250	103.5	166.0000	192.8	A	
	11	TACTICAL	NURD PRJ	NURD/RRF PROJECT	169.1250	103.5	169.1250	103.5	A	
	12	TACTICAL	DLRD PRJ	DIAMOND LAKE RD PROJECT	168.2625	103.5	168.2625	103.5	A	
	13	TACTICAL	CG/T PRJ	COTTAGE GROVE/TILLER	167.3750	103.5	167.3750	103.5	A	
	14	AIR TO GROUND	VMED 29	MEDICAL EVAC ONLY	155.3475	156.7	155.3475	156.7	A	
	15	AIR TO GROUND	A/G 49	IA ONLY	168.0375		168.0375		A	
	16	AIR TO GROUND	A/G-81 SEC	USFS AIR TO GROUND 81 OR 02	166.9500		166.9500		A	

**5. Special Instructions:**

<b>6. Prepared By</b> (Communications Unit Leader)	Name: MISSY PARKER	Signature: <i>Missy Parker</i>
ICS 205	IAP Page	Date/Time: 09/04/2023 2000

## Demob List for Tuesday 09/05/2023

RO #	TIME	ITEM	RESOURCE	FIRE
<b>DINNER - BRICE CREEK - GRIZZLY FIRES</b>				
C-4	0630	(CRW2)	LAVA RIVER	BRICE
C-7	0700	(CRW2)	TOM FERY FARM C196	GRIZZLY
C-10	0730	(CR21)	TETON	BRICE
C-10000	0800	(CRW2)	PACIFIC OASIS ODF	GRIZZLY
E-9	0700	(ENG6)	GRAYBACK	GRIZZLY
E-96 (E-2)	0700	(WTS1)	HILLSIDE FIRE AND FORESTRY	DINNER
E-73	0715	(AMB2)	BEST PRACTICE MEDICINE	DINNER
E-69 (E-3)	0730	(WTS3)	ALLIED WATER	DINNER
E-40	0730	(ENG3)	RATTLE SNAKE RIDGE	DINNER
E-43	0800	(ENG4)	CASTLE MOUNTAIN	DINNER
E-45	0800	(WTS2)	WARREN KIRK	DINNER
E-1	0900	(DOZ4)	LEVI SUTPHIN	BRICE
O-86	0700	(EMTF)	ADVENTURE MEDICS	DINNER
O-69	0715	(EMPF)	MEDIC 30 - BEYOND MDX	DINNER
O-91	0730	(FMOD)	TIMBER TIPPERS	DINNER
<b>CHILCOOT - RIDGE FIRES</b>				
C-41	0700	(CRW2)	FRANCO C-6 T2C062	CHILCOOT
E-56	0720	(WTS2)	RAINMAKER	CHILCOOT
E-107	0740	(DZR2)	TOUGH EQUIPMENT	CHILCOOT
O-56	0630	(EMTF)	ROBBY PERKINS	CHILCOOT
O-176	0630	(EMTF)	WILDLAND MEDIC	CHILCOOT
O-134	0720	(FMOD)	SWEDBERG	CHILCOOT
O-135	0740	(FMOD)	SCHOLL FIRE & FUELS	CHILCOOT
O-136	0740	(FMOD)	SWEDBERG	CHILCOOT

## Demob List for Wednesday 09/06/2023

RO #	TIME	ITEM	RESOURCE	FIRE
<b>DINNER – BRICE CREEK - GRIZZLY FIRES</b>				
C-10002	0700	(CRW2)	AFS FORESTRY	GRIZZLY
C-10001	0730	(CRW2)	TOM FERY FARM C190	GRIZZLY
C-11	0800	(CRW2)	LAVA RIVER	DINNER
E-16	0700	(ENG6)	CHILOQUIN RD 654	BRICE
E-44	0800	(ENG4)	HI COUNTRY	DINNER
O-82	0730	(UTV)	BEYOND THE EDGE REMS 10	DINER

\*\*\*\*\*

## Demob List for Thursday 9/7/2023

RO #	TIME	ITEM	RESOURCE	FIRE
<b>DINNER - BRICE CREEK - GRIZZLY FIRES</b>				
C-10003	0730	(CRW2)	STRATA FORESTRY CREW-1	GRIZZLY
O-86	0700	(REAF)	FREDBECK, RACHEL	CHILCOOT
O-87	0715	(REAF)	HARDER, JONATHAN	CHILCOOT

# Dinner-Brice Creek-Grizzly Fire Demob Check-Out Instruction Form

Pick up Demob Check-Out form at BRIEFING or the PLANS TENT to begin Process

Resource Order # \_\_\_\_\_ Date: \_\_\_\_\_

See the CURRENT IAP for specific locations

Initial

**Follow these steps in the order below:**

- \_\_\_\_\_ 1. **Weed Wash** – ALL line resources that went off-road will need to go through Weed Wash located at Layng Creek Staging. **If not needed, proceed to step 2.**
- \_\_\_\_\_ 2. **Ground support** – Contractors must stop to sign their release inspection. The inspection is optional for agency resources. **Agency resources proceed to step 3.**
- \_\_\_\_\_ 3. **Supply** – Return any items you checked out. All units must have initial from SUPPLY confirming they have no equipment from the incident.
- \_\_\_\_\_ 4. **Communications** – Return any items you checked out. All units must have initial from COMMUNICATIONS confirming they have no radio equipment from the incident.
- \_\_\_\_\_ 5. **Finance** – Proceed to finance to receive your final timesheet. Having ALL your times turned in and up to date will GREATLY speed up the process.
- \_\_\_\_\_ 6. **Demob – Final step.** Return completed Demob Check-Out form to Check-in and any Documentation. Contact Demob at 509-432-6143 with your estimated time of departure, arrival time and destination. You will not be released from the incident with Dispatch until this is completed.

## ALL AIR TRAVELERS

Submit your request 72 hours prior to flight date through the QR Code on the IAP Cover. Call 509-432-6143 for any questions or assistance.

## NIGHT SHIFT PERSONNEL

All night shift personnel coming off the line will be required to meet work/rest requirements before starting the Demob process.

## EXTENSIONS AND CREW SWAPS

All extension and crew swap processes **should be done at least 48 hours** before your last working day to help facilitate Operational resources and the Demob process.



# Umpqua Fires

## Demob Check-Out Instruction Form

Pick up Demob Check-Out form at BRIEFING or the PLANS TENT to begin Process

Resource Order # \_\_\_\_\_ Date: \_\_\_\_\_

See the CURRENT IAP for specific locations

Initial

Follow these steps in the order below:

- \_\_\_\_\_ 1. **Weed Wash** – ALL line resources that went off-road will need to go through Weed Wash located at Layng Creek Staging for North Umpqua (Dinner/Brice/Grizzly) and located at Chilcoot Base Camp for South Umpqua (Chilcoot/Ridge). **If not needed, proceed to step 2.**
- \_\_\_\_\_ 2. **Ground support** – Contractors must stop to sign their release inspection. The inspection is optional for agency resources. **Agency resources proceed to step 3.**
- \_\_\_\_\_ 3. **Supply** – Return any items you checked out. All units must have initial from SUPPLY confirming all equipment has been returned.
- \_\_\_\_\_ 4. **Communications** – Return any items you checked out. All units must have initial from COMMUNICATIONS confirming all radio equipment has been returned.
- \_\_\_\_\_ 5. **Finance** – Proceed to finance to receive your final timesheet. Having ALL your times turned in and up to date will GREATLY speed up the process.
- \_\_\_\_\_ 6. **Demob** – **Final step.** Return completed Demob Check-Out form to Check-in and any Documentation to Demob/Checkin. North Umpqua: Contact Demob at 509-432-6143, for South Umpqua contact Demob in person with your estimated time of departure, arrival time and destination. You will not be released from the incident with Dispatch until this is completed.

### ALL AIR TRAVELERS

Submit your request 72 hours prior to flight date through the QR Code on the IAP Cover. Call 509-432-6143 for any questions or assistance.

### NIGHT SHIFT PERSONNEL

All night shift personnel coming off the line will be required to meet work/rest requirements before starting the Demob process.

### EXTENSIONS AND CREW SWAPS

All extension and crew swap processes **should be done at least 48 hours** before your last working day to help facilitate Operational resources and the Demob process.



# Human Resources Message

September 5, 2023



## Transition and Communication

Team Transition from California Team 12 to NW Team 12.

**Chilcoot and Ridge fires are under new management! California Team 12 did an outstanding job of managing the Chilcoot and Ridge fires and as of this morning, they have turned that responsibility over to NW Team 12. We appreciate their professionalism and support and look forward to working with them in the future.**

**As we adjust to the ongoing changes and challenges of picking up additional fire responsibilities, we want to make sure that we keep the lines of communication open and clear. If you have any questions, please reach out to any NW Team 12 member.**

**NW Team 12 continues to manage Dinner, Grizzly, and Brice Creek fires. We will continue to support all fire personnel at Sharps Creek Base Camp and at the Strader ICP. We have overhead staff in each location to provide that support. If there is anything you need, please let us know.**

**With any team transition, there will be differences in management styles however, our objectives have not changed nor have our responsibilities. We are here to support you!**

---

**Human Resources will be located at the Strader ICP. Please reach out to Susie Manezes or Todd Buchholz, (HRSPs), as they serve as focal points for informal resolution of issues or concerns.**

**Work safely and have a good day!**

**Contact Information - Susie Manezes, (602) -571-9327  
Todd Buchholz, (541) 580-4890**



# LOGISTICS MESSAGE

## Strader ICP

Meals	Breakfast: 0600-1000 Dinner: 1800-2200
Shower	0500-1200 1400-2200
Laundry	0500-2200
Supply	0630-2000
Fuel Truck	0630-2100
Medical Trailer	0630-2200
Weed Wash	0700-2200

## Sharps Creek Base Camp

Meals**	Breakfast: 0500-0900 Dinner: 1700-2200
Shower	0430-1200 1500-2230
Supply	0600-2100
Ground Support	0600-2100
Weed Wash	0700-2200

\*\* Any meal deliveries to the line require a 24-hour notice. Crews delayed returning to camp will need a 4-hour notice to arrange meals.



# Finance Message



Finance Email: [2023.dinner.finance@firenet.gov](mailto:2023.dinner.finance@firenet.gov)

SUBJECT: *Include Key Word* **TIME** for Overhead, Crews & Cooperators

SUBJECT: *Include Key Word* **EQUIPMENT** for Contract Resources

Temporary Finance Phone: 509-423-6011

**FINANCE CHECK IN:** [2023.dinner.finance@firenet.gov](mailto:2023.dinner.finance@firenet.gov)

PLEASE ENSURE THE DOCUMENTS LISTED BELOW ARE EMAILED

Overhead, Crews & Cooperator Resources	Contract Resources
<ul style="list-style-type: none"> <li>• <b>Check-In:</b> Crew Manifest, Cooperative Agreement (if applies), AD Hire Letter, Resource Order</li> <li>• <b>Daily:</b> Crew Time Report (CTR), Shift Tickets</li> <li>• <b>Demob:</b> Signed OF288, Final Equipment Use Invoice (Cooperator). If you don't have a way to sign you must come to finance.</li> </ul>	<ul style="list-style-type: none"> <li>• <b>Check-In:</b> Resource Order, Contract/VIPR Agreement (make sure you have your UEI, Pre-Inspection</li> <li>• <b>Daily:</b> Shift Tickets, receipts (fuel issues, claims, etc.)</li> <li>• <b>Demob:</b> Contractor Evaluations, Final Shift Tickets and receipt(s) for Addition/Deductions, Post-Inspection, Final Signed Invoices. If you don't have a way to sign you must come to finance</li> </ul>

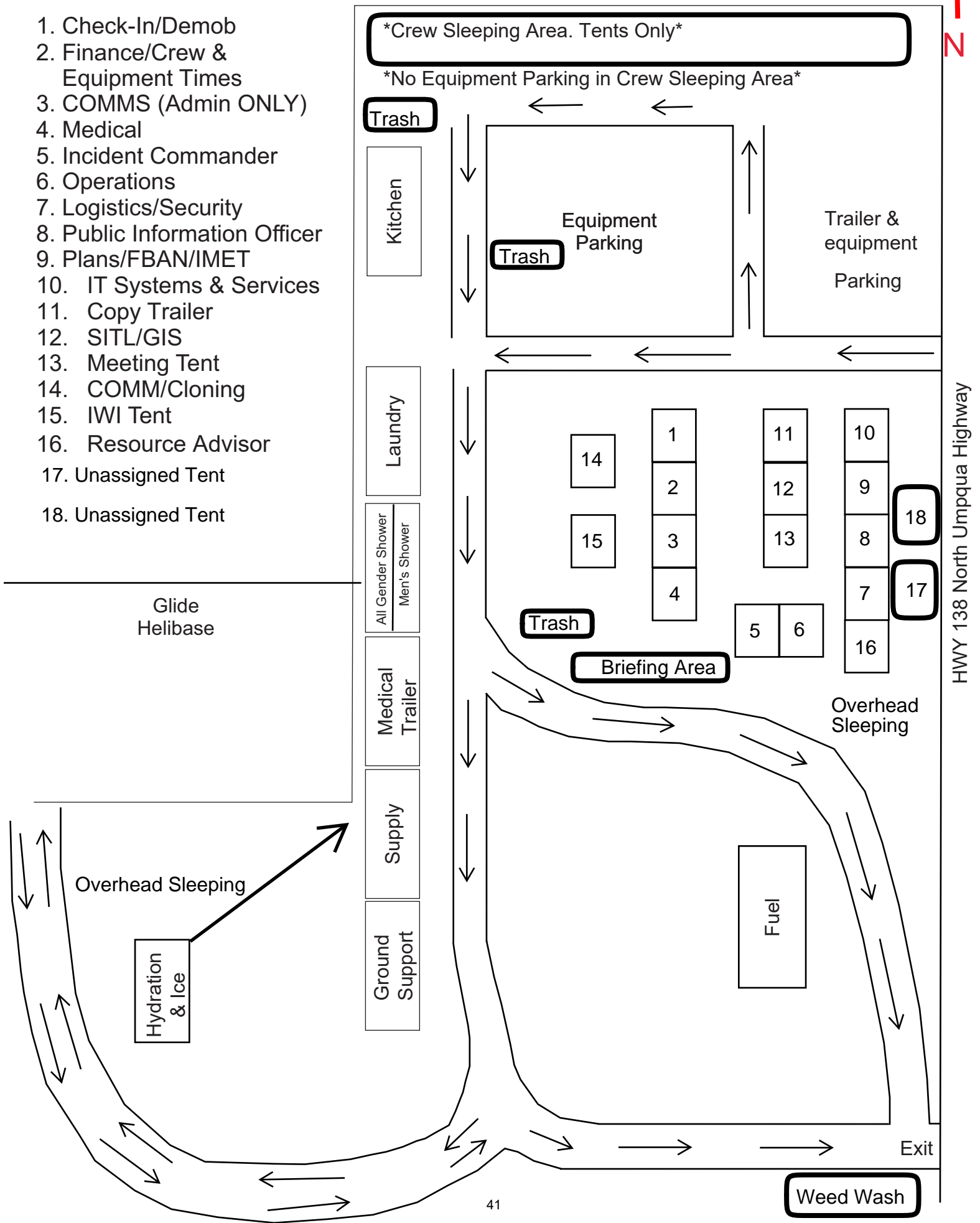
## REMINDERS

- ★ PLEASE ENSURE YOU INCLUDE LOCATION OF WHERE YOU ARE WORKING (DINNER, BRICE, GRIZZLY) ON THE CTR OR SHIFT TICKET. MAKE SURE O,C OR E # IS ON THE CTR OR SHIFT TICKET
- ★ PLEASE SHOW YOUR LUNCH BREAK
- ★ PLEASE USE MILITARY TIME (0001-2400)
- ★ WHEN CLAIMING HAZARD PAY YOU MUST INCLUDE THE SUPPRESSION ACTION BEING PERFORMED. THIS INCLUDES OPERATIONS WHICH DIRECTLY SUPPORT CONTROL OF FIRE (E.G., ACTIVITIES TO EXTINGUISH THE FIRE, FIREFIGHTING, GROUND SCOUTING, SPOT FIRE PATROLLING, SEARCH AND RESCUE OPERATIONS, AND BACKFIRING).
- ★ PLEASE MAKE SURE YOU SEE FINANCE AND MEDLS WHEN AN MINOR INJOURY. AGENCY PEOPLE WILL NOT HAVE CLAIMS PAID IF THEY DON'T FOLLOW PROTCOLS.

# Chilcoat Base Camp Map



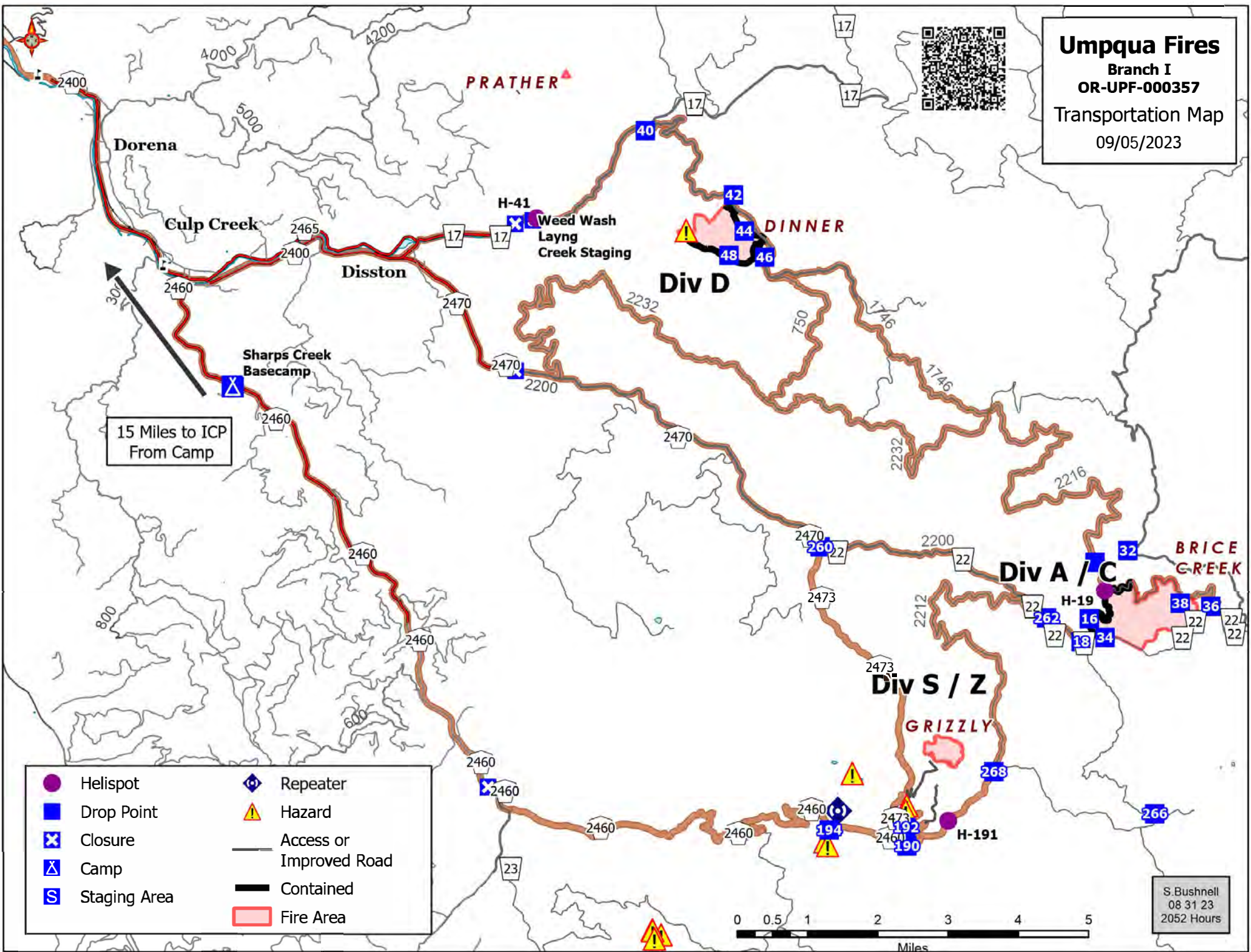
1. Check-In/Demob
2. Finance/Crew & Equipment Times
3. COMMS (Admin ONLY)
4. Medical
5. Incident Commander
6. Operations
7. Logistics/Security
8. Public Information Officer
9. Plans/FBAN/IMET
10. IT Systems & Services
11. Copy Trailer
12. SITL/GIS
13. Meeting Tent
14. COMM/Cloning
15. IWI Tent
16. Resource Advisor
17. Unassigned Tent
18. Unassigned Tent



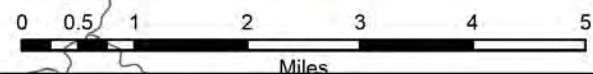
HWY 138 North Umpqua Highway



**Umpqua Fires**  
 Branch I  
 OR-UPF-000357  
 Transportation Map  
 09/05/2023



- |              |                         |
|--------------|-------------------------|
| Helispot     | Repeater                |
| Drop Point   | Hazard                  |
| Closure      | Access or Improved Road |
| Camp         | Contained               |
| Staging Area | Fire Area               |



S. Bushnell  
 08 31 23  
 2052 Hours



# Dinner OR-UPF-000357

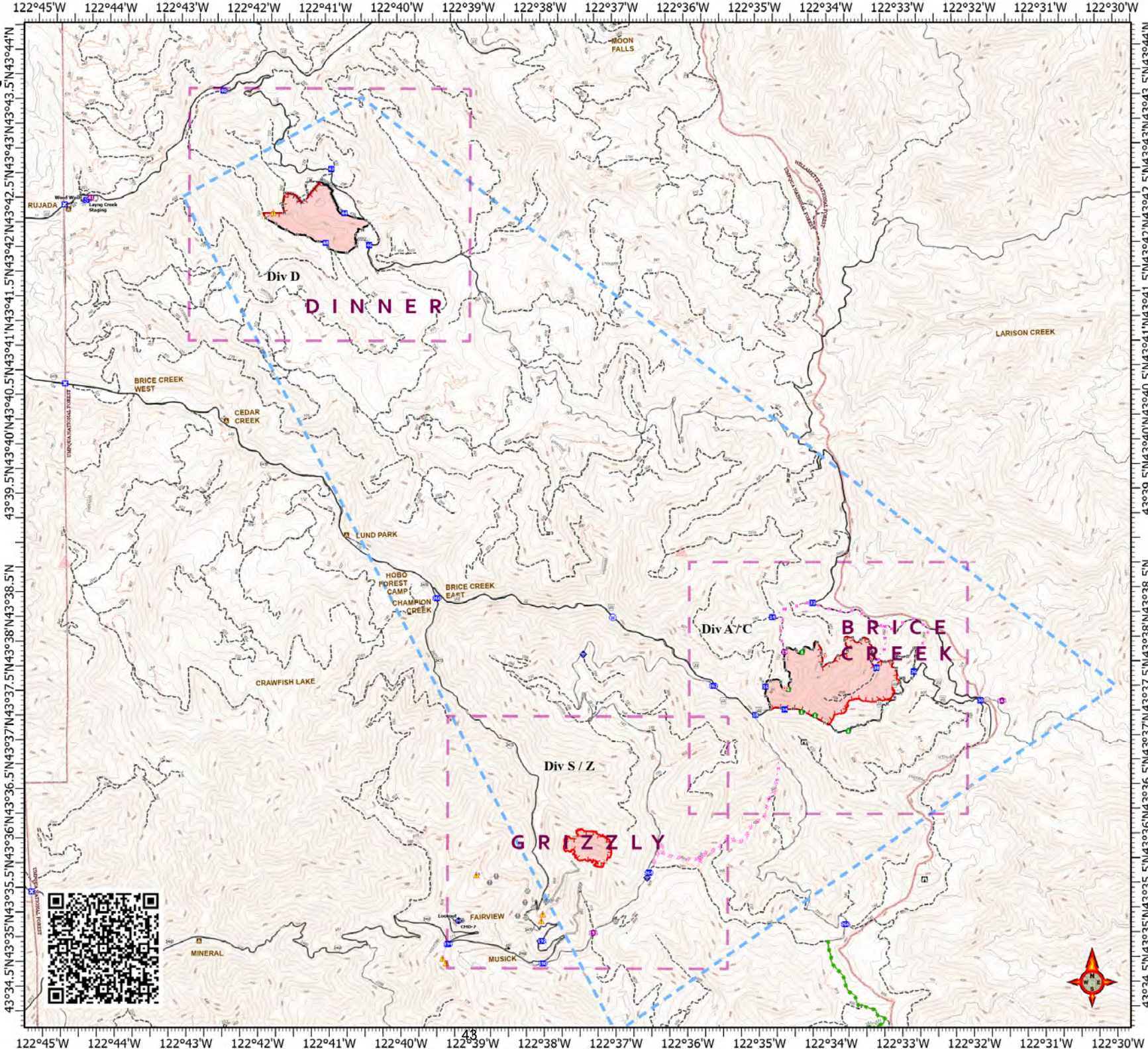
IAP Map  
Umpqua Fires  
Branch I  
09/05/2023  
acres at

- Helispot
- Drop Point
- ⊠ Closure
- ⊠ Staging Area
- ⊠ Lookout
- ⊠ Hot Spot - Spot Fire
- ⊠ Value at Risk
- ⊠ Other
- ⊠ Gate
- ⊠ Hazard Tree
- ⊠ Internet Access
- ⊠ Repeater
- ⊠ Hazard
- ⊠ Water Source
- ⊠ Campground
- ⊠ Forest Service Facility
- ⊠ Lookout - Permanent
- ⊠ Completed Dozer Line
- ⊠ Completed Hand Line
- ⊠ Completed Road as Line
- ⊠ Planned Dozer Line
- ⊠ Planned Hand Line
- ⊠ Planned Mixed Construction Line
- ⊠ Planned Road as Line
- ⊠ Access or Improved Road
- ⊠ Other
- ⊠ Escape Route
- ⊠ Temporary Flight Restriction
- ⊠ Contained
- ⊠ Uncontained Fire Edge
- ⊠ Paved Road
- ⊠ Gravel Road, Suitable for Passenger Car
- ⊠ Dirt Road, Suitable for Passenger Car
- ⊠ Road Not Suitable for Passenger Car
- ⊠ Closed Road
- ⊠ No Oper Maint Level



S. Bushnell  
08 31 23  
2054 Hours

Datum: North American 1983



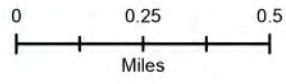


# Brice Creek OR-UPF-000359

**IAP Map**  
Umpqua Fires  
Branch I  
09/05/2023

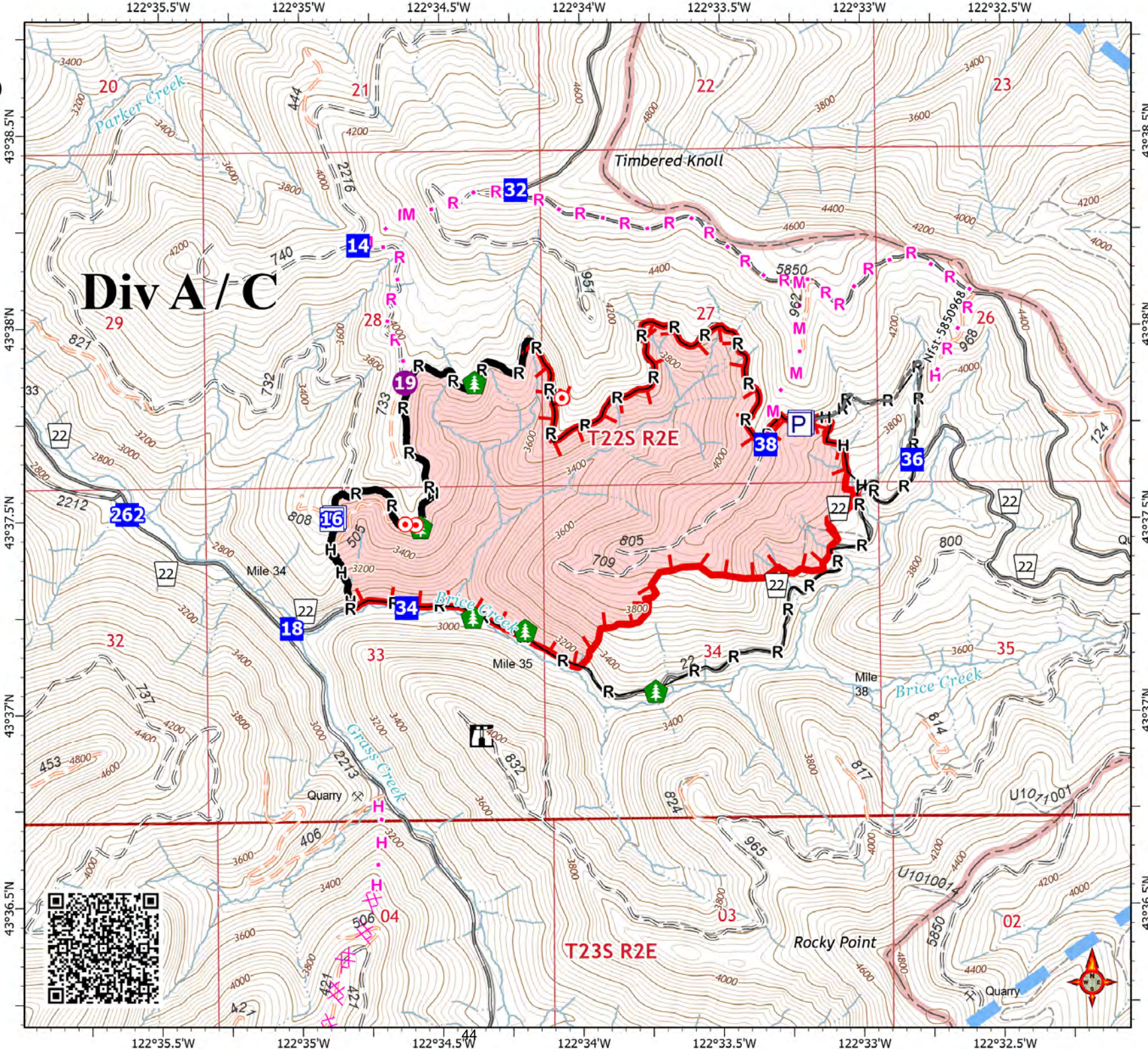
583 acres at 9/2/2023 17:51:00

-  Pump
-  Water Tank
-  Helispot
-  Drop Point
-  Lookout
-  Hot Spot - Spot Fire
-  Hazard Tree
-  Completed Hand Line
-  Completed Road as Line
-  Planned Dozer Line
-  Planned Hand Line
-  Planned Mixed Construction Line
-  Planned Road as Line
-  Other
-  Temporary Flight Restriction
-  Contained
-  Uncontained Fire Edge
-  Paved Road
-  Gravel Road, Suitable for Passenger Car
-  Road Not Suitable for Passenger Car
-  Closed Road
-  No Oper Maint Level
-  Trail
-  Fire Area



S. Bushnell  
08 31 23  
2052 Hours

Datum: North American 1983





# Dinner OR-UPF-000357

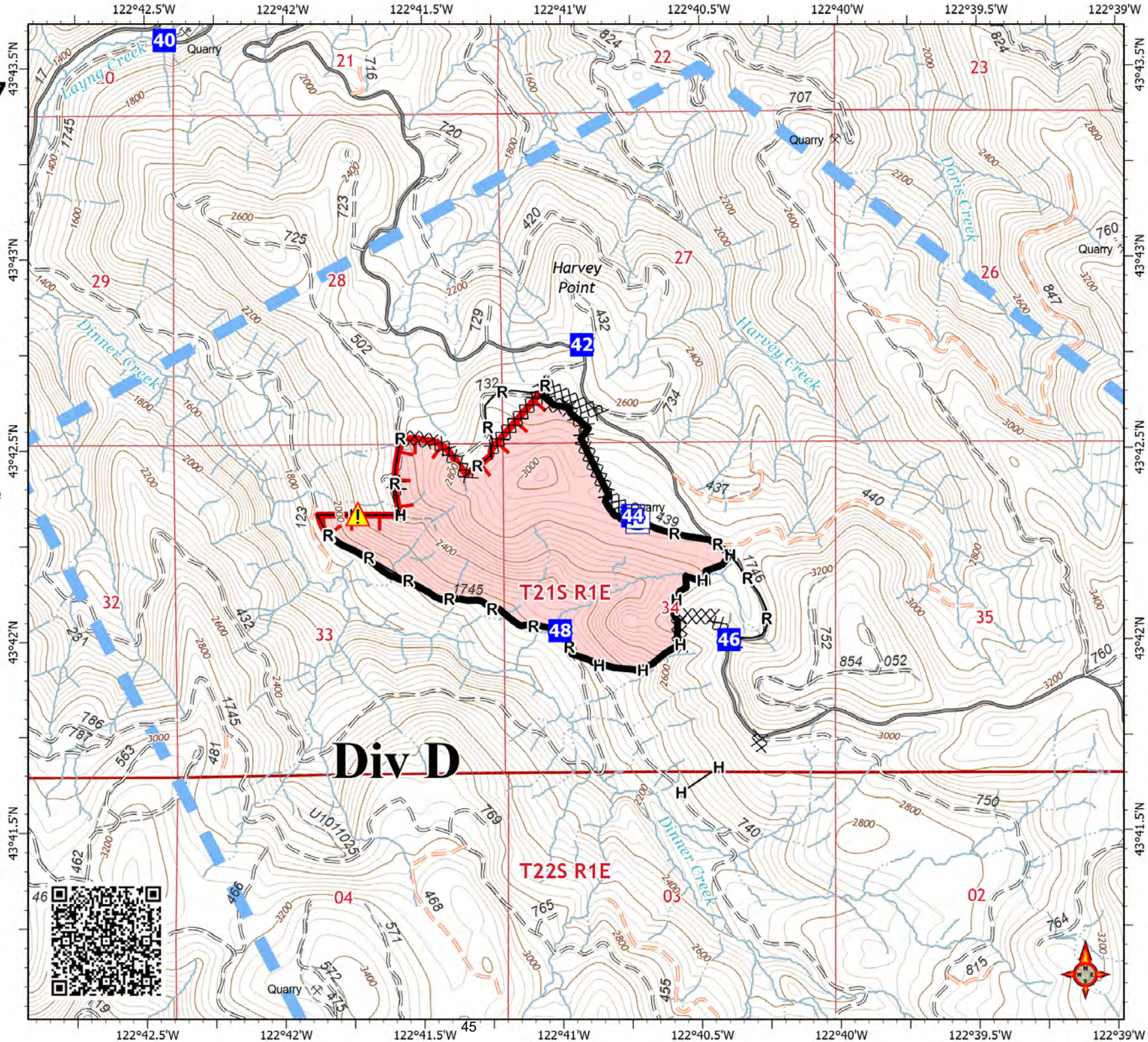
## IAP Map

Umpqua Fires  
Branch I

09/05/2023

304 acres at 9/2/2023 14:30:00

-  Pump
-  Water Tank
-  Drop Point
-  Hazard
-  Completed Dozer Line
-  Completed Hand Line
-  Completed Road as Line
-  Temporary Flight Restriction
-  Contained
-  Uncontained Fire Edge
-  Paved Road
-  Road Not Suitable for Passenger Car
-  Closed Road
-  No Oper Maint Level
-  Trail
-  Fire Area



S. Bushnell  
08 31 23  
2053 Hours

Datum: North American 1983

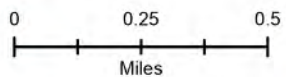


# Grizzly OR-UPF-000341

IAP Map  
Umpqua Fires  
Branch I  
09/05/2023

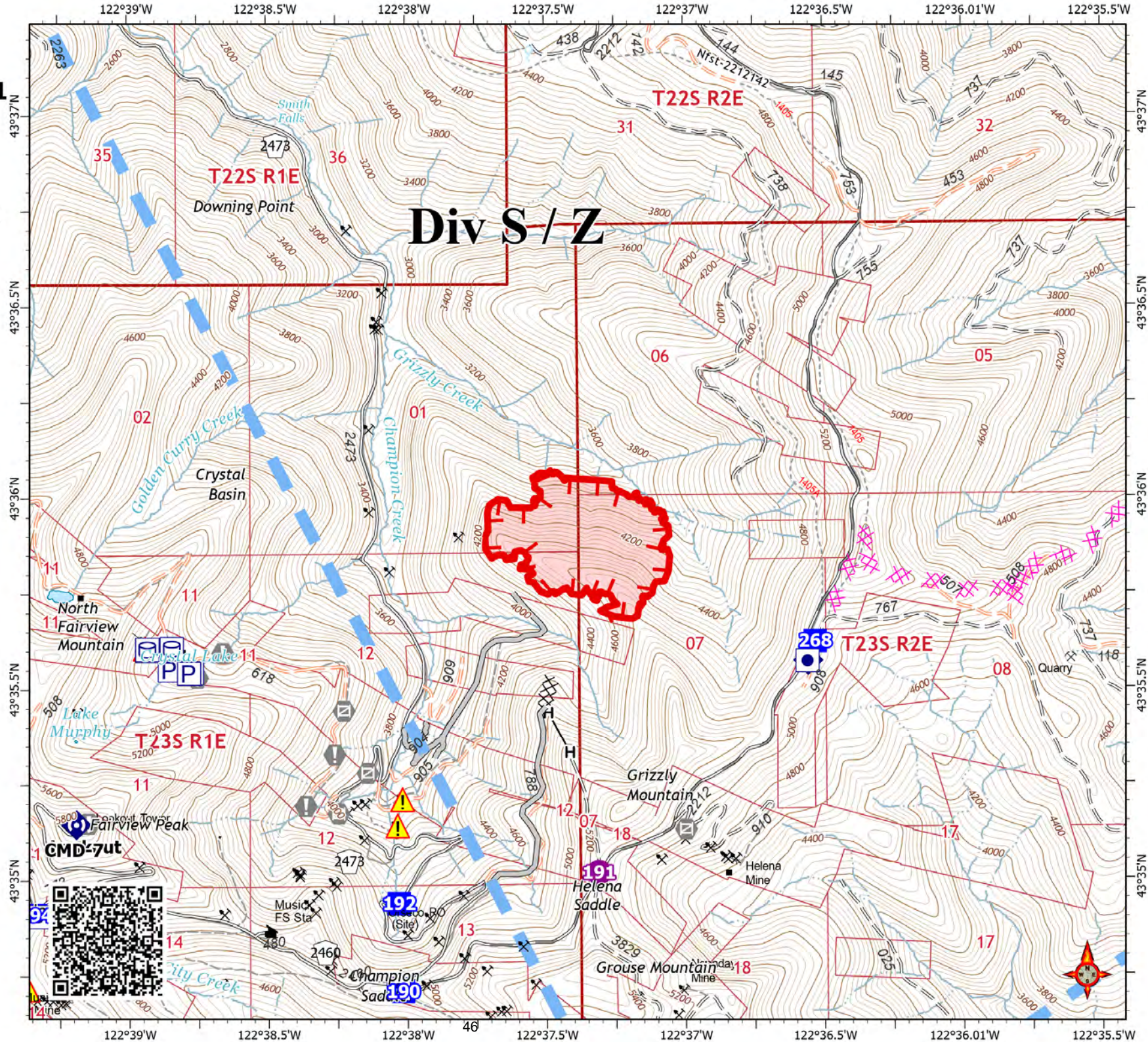
100 acres at 9/2/2023 21:53:00

- Other Property
- Pump
- Water Tank
- Helispot
- Drop Point
- Value at Risk
- Gate
- Internet Access
- Repeater
- Hazard
- Structures
- Forest Service Facility
- Lookout - Permanent
- Completed Dozer Line
- Completed Hand Line
- Planned Dozer Line
- Access or Improved Road
- Temporary Flight Restriction
- Uncontained Fire Edge
- Gravel Road, Suitable for Passenger Car
- Dirt Road, Suitable for Passenger Car
- Road Not Suitable for Passenger Car
- Closed Road
- No Oper Maint Level
- Trail
- Fire Area



S. Bushnell  
08 31 23  
2053 Hours

Datum: North American 1983







# Public Information Message

**PHOTOS:** Your fireline photos help us build understanding with the public. Community members want to see what you see because you go where others can't safely go. We are looking for any pictures of the fire line, fire engines and equipment, mop-up work, and **fire resources working on the fire line in their PPE**. You can send photos to:

Email: 2023.dinner@firenet.gov

Text: 509-388-1475

As always, make sure you're wearing all your PPE and conveying a professional, caring, and respectful attitude toward the homes and land in this community. Thanks for helping us out!

**QUESTIONS FROM THE PUBLIC:** If community members have questions that you do not feel equipped to answer professionally, please give them our fire information line: (541) 900-5862.

# Liaison Message

Please click on the QR code and answer a few questions to be added to our Cooperators list. You will then be provided with a daily update and cooperators meeting invitation.





## **Sharps Creek Base Camp**

### **In Camp Medical Procedure**

#### **If Red or Yellow**

Yell for help and stay with patient

Provide first aid as appropriate

Contact Dinner Communications at **208-891-8093** or by radio

#### **If Green**

Go to camp medical tent for evaluate and treatment





# EMERGENCY PLAN INCIDENT WITHIN AN INCIDENT

## ON SCENE INCIDENT COMMANDER

In the event of an accident or medical incident of any size, your primary responsibility is to ENSURE that the victim(s) receive prompt and effective Triage, Treatment, Extrication and Transport.

- **ENSURE THE MEDICAL INCIDENT REPORT IN THE INCIDENT ACTION PLAN IS BEING USED AND FOLLOWED- \*IF DETERMINED TO BE A GREEN, DO NOT DECLARE EMERGENCY TRAFFIC AND ONLY COMPLETE LINE 1-4 ON MIR\*.**
- Conduct size-up of the incident, including nature of accident, number type of resources involved, latitude and longitude location (DD° MMM.MM format). Notify incident communications center and supervisor. Request assistance as needed.
- Order and coordinate medical and support response to the accident.
- Evaluate special needs (law enforcement, haz mat, etc.).
- Clear the command frequency if medical emergency. Coordinate with incident communications and air attack for air medical transportation needs.
- Preserve and photograph the scene for accident investigation.
- Remain aware of surroundings and the status of the main incident (delegate personnel to monitor the main fire) to ensure safety of medical treatment personnel.
- Until relieved, supervise and manage all personnel involved at the incident scene.

## MEDICAL PLAN (ICS 206 WF)

Incident/Project Name				Operational Period			
<b>UMPQUA FIRES</b> <b>BRANCH 1- Cottage Grove</b>				<b>9/05/2023</b> <b>0700 - 1900</b>			
<b>Ambulance Services</b>							
Name	Complete Address	Phone	Advanced Life Support (ALS)			Yes	No
South Lane Fire & Rescue	233 E Harrison Ave Cottage Grove, OR 97424	911	X				
Eugene Springfield Fire Dept	Multiple Stations Eugene & Springfield	911	X				
North Douglas County Fire & EMS	531 S Cedar St. Drain, OR 97435	911	X				
<b>Air Ambulance Services</b>							
Name	Phone	Capability					
Life Flight	Use VMED 29 air to ground	Critical Care Medic/RN Night Capable 100x100 LZ					
Oregon Army National Guard	Use VMED 29 air to ground Roseburg, OR	MEDIC Night Vision Capable					
Teton Short Haul	Use VMED 29 air to ground Sunriver, OR	EMT Daytime Use Only					
<b>Hospitals</b>							
Name Complete Address	Coordinate Standard Degrees Decimal Minutes DD° MM.MMM' N - Lat DD° MM.MMM' W - Long	Travel Time From ICP Air Gnd		Phone	Helipad Yes No		Level of Care Facility
Sacred Heart Medical Center (Riverbend) 3333 Riverbend, Drive Springfield, OR Legacy Emanuel 2801 N Gantenbien Portland, OR PeaceHealth Cottage Grove Community Medical Center 1515 Village Dr Cottage Grove, OR 97424	Lat: 44°04.876' N	15 min	30 min	541-222-6931	X		Level 2
	Long: 123°01.588' W						
	Lat: 45°32.668' N	1hr	2hr	503-413-3121	X		Level 1 Trauma Burn Center
	Long: 122°40.293' W						
	Lat: 43°48.2292' N	10 min	10 min	541-767-5500	X		Basic
Long: 123°2.3801' W							
<b>Division Branch Group</b>		<b>Capability</b>		<b>Personnel</b>			
<b>Grizzly Fire S/Z</b>		4X4 with ALS & Rope Rescue 4x4 with ALS & Low Angle Rope Rescue ALS Ambulance		REMS 10 (O-82) Jesse Bean RAT (O-88) John Buchan Ambo 3 (E-1) Lonnie Camp			
<b>Grizzly Fire Structure Group</b>				Utilize Nearby Resources			
<b>Brice Creek Fire Div A/C</b>		ALS Ambulance 4X4 with ALS & Rope Rescue		Ambo 4 (E-63) Andrew Lyman REMS 12 (O-85) Sueann Murphy			

## MEDICAL PLAN (ICS 206 WF)

<b>Dinner Fire Div D</b>	ALS kit with UTV ALS Ambulance 4X4 with ALS & Rope Rescue	Medic Team 21(O-87) Brennen Hill Ambo 2 (E-3) Zach Tromp REMS 11 (O-29) Joe Decker	
<b>Sharps Creek Basecamp</b>	ALS Ambulance ALS kit, OTC meds	Ambo 5 (E-64) Jessie Evans Lee Venning MEDL (O-1.44) Angela Cisneros Thorsvold MEDL(O-80) EMPF Mike Verbitsky (O-105)	
<b>Prepared By (Medical Unit Leader)</b>		<b>Date/Time</b>	
<b>Diana Braun</b>		<b>9/4/2023</b>	
<b>Reviewed By (Safety Officer)</b>		<b>Date/Time</b>	
<b>Jack Cates</b>		<b>9/4/2023</b>	



## MEDICAL PLAN (ICS 206 WF)

Incident/Project Name				Operational Period			
<b>UMPQUA FIRES BRANCH 2 - North Umpqua</b>				<b>9/05/2023 0700 - 1900</b>			
<b>Ambulance Services</b>							
Name	Complete Address	Phone	Advanced Life Support (ALS)		Yes	No	
Umpqua Valley Ambulance	1290 NE Cedar St Roseburg, OR	911			X		
<b>Air Ambulance Services</b>							
Name	Phone	Capability					
Life Flight	Use VMED 29 air to ground	Critical Care Medic/RN Night Capable 100x100 LZ					
Oregon Army National Guard	Use VMED 29 air to ground Roseburg, OR	MEDIC Night Vision Capable					
Yellowstone N234BH	Use VMED 29 air to ground Grants Pass, OR	Daytime Use Only Short Haul					
Teton N38HX	Use VMED 29 air to ground Sunriver, OR	Daytime Use Only Short Haul					
<b>Hospitals</b>							
Name Complete Address	Coordinate Standard Degrees Decimal Minutes DD° MM.MMM' N - Lat DD° MM.MMM' W - Long	Travel Time From ICP Air Gnd		Phone	Helipad Yes No		Level of Care Facility
Sacred Heart Medical Center (Riverbend) 3333 Riverbend, Drive Springfield, OR	Lat: 44°04.876' N	1 hr	4 hr	541-222-6931	X		Level 2
	Long: 123°01.588' W						
Legacy Emanuel 2801 N Gantenbien Portland, OR	Lat: 45°32.668' N	2 hr	4 hr	503-413-2200	X		Level 1 Trauma Burn Center
	Long: 122°40.293' W						
Mercy Medical Center 2700 NW Stewart Pkwy Roseburg, OR	Lat: 43°48.2292' N	30 min	1 hr	541-673-0611	X		Level 3
	Long: 123°2.3801' W						
Division Branch Group	Capability			Personnel			
<b>Ridge Fire S/W</b>	4X4 with ALS & Rope Rescue ALS Team ALS Team 4x4 ALS Ambulance			REMS 2 (O-73) Andrew Paddison-Lead EMPF Gibson (O-63) EMPF Garcia (O-61) Ambo3 (E-143) Tatyana Logan-Lead			
<b>DD</b>	ALS with UTV ALS Team			Medic Team (E-142) Joshua Fargan-Lead EMPF Kaiser (O-62) EMTF Kime (O-177)			
<b>EE</b>	4X4 with ALS & Rope Rescue 4x4 ALS Ambulance			REMS 1 (O-72) Josh Banex-Lead Ambo 1 (E-145) Ken Shields-Lead			

## MEDICAL PLAN (ICS 206 WF)

<b>HH</b>	BLS BLS ALS	EMTF Welch (O-59) EMTF Martinez (O-57) EMPF Gifford (O-174)	
<b>JJ</b>	BLS ALS ALS Ambulance	EMTF Caudill (O-58) EMPF Dobson (O-64) Ambo 2 (E-32) Seth Cribb-Lead	
<b>Contingency</b>	Use nearby resources	Use nearby resources	
<b>Chilcoot ICP</b>	ALS Medical Support Unit ALS kit, OTC meds ALS ALS	MESU (E-33) Cardinal Medical, Julie Sargent-Lead MEDL Ellis Johnston (O-66) MEDL Brandon Bennewate (O-3.35) MEDL John Nokes (O-210)	
<b>Prepared By (Medical Unit Leader)</b>		<b>Date/Time</b>	
<b>Diana Braun</b>		<b>9/4/2023</b>	
<b>Reviewed By (Safety Officer)</b>		<b>Date/Time</b>	
<b>Jack Cates</b>		<b>9/4/2023</b>	

# MEDICAL PLAN (ICS 206 WF)

Controlled Unclassified Information//Basic

## Medical Incident Report

**FOR A NON-EMERGENCY INCIDENT, WORK THROUGH CHAIN OF COMMAND TO REPORT AND TRANSPORT INJURED PERSONNEL AS NECESSARY.**

**FOR A MEDICAL EMERGENCY: IDENTIFY ON SCENE INCIDENT COMMANDER BY NAME AND POSITION AND ANNOUNCE "MEDICAL EMERGENCY" TO INITIATE RESPONSE FROM IMT COMMUNICATIONS/DISPATCH.**

Use the following items to communicate situation to communications/dispatch.

**1. CONTACT COMMUNICATIONS / DISPATCH (Verify correct frequency prior to starting report)**

*Ex: "Communications, Div. Alpha. Stand-by for Emergency Traffic."*

**2. INCIDENT STATUS: Provide incident summary (including number of patients) and command structure.**

*Ex: "Communications, I have a Red priority patient, unconscious, struck by a falling tree. Requesting air ambulance to Forest Road 1 at (Lat./Long.) This will be the Trout Meadow Medical, IC is TFLD Jones. EMT Smith is providing medical care."*

Severity of Emergency / Transport Priority	<input type="checkbox"/> RED / PRIORITY 1 Life or limb threatening injury or illness. Evacuation need is IMMEDIATE <i>Ex: Unconscious, difficulty breathing, bleeding severely, 2° – 3° burns more than 4 palm sizes, heat stroke, disoriented.</i> <input type="checkbox"/> YELLOW / PRIORITY 2 Serious Injury or illness. Evacuation may be DELAYED if necessary. <i>Ex: Significant trauma, unable to walk, 2° – 3° burns not more than 1-3 palm sizes.</i> <input type="checkbox"/> GREEN / PRIORITY 3 Minor Injury or illness. Non-Emergency transport <i>Ex: Sprains, strains, minor heat-related illness.</i>	
Nature of Injury or Illness & Mechanism of Injury		<i>Brief Summary of Injury or Illness (Ex: Unconscious, Struck by Falling Tree)</i>
Transport Request		<i>Air Ambulance / Short Haul/Hoist Ground Ambulance / Other</i>
Patient Location		<i>Descriptive Location &amp; Lat. / Long. (WGS84)</i>
Incident Name		<i>Geographic Name + "Medical" (Ex: Trout Meadow Medical)</i>
On-Scene Incident Commander		<i>Name of on-scene IC of Incident within an Incident (Ex: TFLD Jones)</i>
Patient Care		<i>Name of Care Provider (Ex: EMT Smith)</i>

**3. INITIAL PATIENT ASSESSMENT: Complete this section for each patient as applicable (start with the most severe patient)**

Patient Assessment: See IRPG page 106

Treatment:

**4. TRANSPORT PLAN:**

Evacuation Location (if different): (Descriptive Location (drop point, intersection, etc.) or Lat. / Long.) Patient's ETA to Evacuation Location:

Helispot / Extraction Site Size and Hazards:

**5. ADDITIONAL RESOURCES / EQUIPMENT NEEDS:**

*Example: Paramedic/EMT, Crews, Immobilization Devices, AED, Oxygen, Trauma Bag, IV/Fluid(s), Splints, Rope rescue, Wheeled litter, HAZMAT, Extrication*

**6. COMMUNICATIONS: Identify State Air/Ground EMS Frequencies and Hospital Contacts as applicable**

Function	Channel Name/Number	Receive (RX)	Tone/NAC *	Transmit (TX)	Tone/NAC *
COMMAND					
AIR-TO-GRND					
TACTICAL					

**7. CONTINGENCY: Considerations: If primary options fail, what actions can be implemented in conjunction with primary evacuation method? Be thinking ahead.**

**8. ADDITIONAL INFORMATION: Updates/Changes, etc.**

**REMEMBER: Confirm ETA's of resources ordered. Act according to your level of training. Be Alert. Keep Calm. Think Clearly. Act Decisively.**

Controlled Unclassified Information//Basic