



# INCIDENT ACTION PLAN

## Grizzly Dinner Brice Creek Chilcoot Ridge



IAP, MAPS,  
CHECK-IN

September 14, 2023

Operational Period 0700-1900

### NOTES:


Dinner  
OR-UPF-000357  
P6 QLI7 (0615)

Brice Creek  
OR-UPF-000359  
P6 QLI4 (0615)

Ridge  
OR-UPF-000346  
P6 QLF4 (0615)

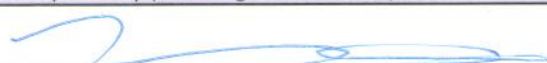

Grizzly  
OR-UPF-000341  
P6 QLOW (0615)

Chilcoot  
OR-UPF-000345  
P6 QLF5 (0615)



Donate 1-hour of OT – Wildland Firefighter Foundation

**Incident Objectives (ICS 202)**

1. Incident Name		2. Date Prepared		3. Time Prepared	
Umpqua Fires		9/13/2023		2000	
4. Operational Period (Date and Time)					
From:	9/14/2023	at	700	To:	9/14/2023 at 1900
5. Strategic Framework and Leaders Intent					
Strategic Framework:					
Implement suppression strategies that minimize impacts to identified values at risk, and that ensures firefighter and public safety are the top priority					
Specifically manage risk to firefighters by ensuring hazards are identified, assessed, and where possible mitigated. Be prepared to accept residual risk when exposure is commensurate with values threatened and the probability of achieving objectives is high.					
Leaders Intent:					
Engage in all work assignments with a high degree of professionalism and provide excellent customer service to all parties involved with the incident. All assigned personnel should:					
* Exhibit professional behavior					
* Ensure effective communication					
* Manage personal safety and the safety of others					
* Conduct effective fatigue management and implement work/rest cycles					
6. Management Objectives and Requirements					
Implement operational plans that establish holding features across the entire perimeter of each fire resulting in minimized duration and physical extent of each, and maximizing the protection of:					
* Highway 138 corridor					
* Private timber lands					
* Bohemia Mining District, Fairview Comm Site, Chilcoot Repeater, and other infrastructure					
* Natural and cultural resources					
Coordinate all fire suppression and repair work with Resource Advisors to protect natural and cultural values.					
Maintain effective relationships by ensuring timely information between the IMT, affected agencies, and the public.					
7. Operational Period Command Emphasis					
Many of you have been on these fires for some time, often driving the same roads, to the same locations, to see the same part of the country several consecutive days. To maintain focus, key into your situational awareness to find something new in your surroundings you hadn't noticed before. It doesn't have to be a hazard, just something different. Challenge your coworkers to find these details while focused on the mission including your safety.					
8. Attachments (check if attached)					
X	Organization List (ICS 203)	X	Medical Plan (ICS 206)	X	Fire Behavior
X	Assignment List (ICS 204)	X	Safety Message		
X	Communications Plan (ICS 205)	X	General Forecast		
9. Prepared by (Planning Section Chief)			10. Approved by (Incident Commander)		
					

### ORGANIZATION ASSIGNMENT LIST (ICS 203)

NORTHWEST TEAM 6				7. Operations Section			
1. Incident Name		CHILCOOT FIRE		Operations		DAN MARTIN	
				Field Operations		JESS BOHNSACK / JOE PARR (T)	
2. Date		Time		Planning Operations		TRISH WALLACE / STEVE YOUNG (T)	
9/12/2023		2000		Planning Operations		TIM NUTLEY / JAMES GRAHAM (T)	
2a. Operational Period				Strategic Operations			
From: 9/14/2023 0700 To: 9/14/2023 1900							
3. Incident Commander(s) and Staff							
Incident Commander		TYSON ALBRECHT					
Deputy		ADAM VEALE / KEN PAUL		DIVISION BRICE CREEK		A LOGAN LAWSON	
Safety Officer		ERIC RISDAL / SHANE THEALL		DIVISION BRICE CREEK		C DOUG CATES	
Safety Officer		AL AUGUSTINE		DIVISION DINNER		D JEFF LUCAS	
Medical Unit		JOHN NOKES / CHRISTY FIELD (T)		DIVISION GRIZZLY		S/Z RORY HIETT	
Medical Unit		LAURA BELINO / PAUL SMITH (T)		DIVISION CHILCOOT		E NICK PETERS	
Information Officer		JODIE BARRAM / JESSICA REED (T)		DIVISION CHILCOOT		H JON MILES / JOHN ASHCRAFT (T)	
Information Officer		NANCY JONES / JOE ANDERSON		DIVISION CHILCOOT		J DAN COTHREN	
Liaison Officer		KIM TITUS / CRAIG GARRIT		DIVISION CHILCOOT CONTINGENCY		JAMES GRAHAM / LOGAN DAVIS (T)	
Human Resources		AUDREY MATSUMONJI		DIVISION RIDGE		W SHILOW NORTON	
				Branch Director			
				DIVISION			
				DIVISION			
4. Agency/Organization Representative							
UMPQUA NATIONAL FOREST		DAVID ANDERSEN / JACK LEWIS / BETH CHRISTIANSEN		DIVISION			
UMPQUA NATIONAL FOREST		CAROM VADALA (T) / MARK SOMMER (T)		BRANCH			
WILLAMETTE NF		MOLLY JUILLERAT		Branch Director			
BLM - EUGENE		DENNIS TEITZEL		DIVISION			
BLM - ROSEBURG		HEATHER WHITMAN		DIVISION			
ODF		CHRIS CLINE; JOHN FLANNIGAN		DIVISION			
DFPA		LINK SMITH		Branch Director			
LEAD READ		JED HANCOCK		GROUP			
USFS - SW IARR		MANUEL MARTINEZ		GROUP			
				GROUP			
5. Planning Section							
Chief		KRISANN KOSEL		GROUP			
Deputy		SUE PUDDY		GROUP			
Resource Unit		STEPHANIE FALCON / JAMES MAHAFFY (T)					
Situation Unit		KENT ELLETT / DAMIEN HAWLEY-JONES (T)		GROUP			
Status Check-in		AMY BURT (T) / DIANA HECKATHORN (T)		DIVISION			
GISS		EMILY RUSH / ROBIN BIGGS (T)		GROUP			
Fire Behavior		SARAH BUSH					
Meteorologist		STEVE BODNAR					
FOBS							
DMOB		MIKE HESTON					
				7b. Air Operations Branch			
				Air Operations Director		DOUG LEDGERWOOD	
				Air Support Supervisor		KEVIN KOZAK	
				Air Attack Supervisor			
6. Logistics Section							
Chief		JOE NEER / CINDY WEDEKIND / BEN WAKER (T)		Helicopter Coordinator			
Facilities Unit							
Supply Unit		JON BYERLY					
Ground Support Unit		TODD GRIFFIN / BRANDON SIEDERS / MIGUEL MACIAS (T)					
Communications Unit		TROY MCMILLIAN					
ITSS		MATT MATSON / JAMES BROWN (T)					
Food Unit		MIKE SPATZ / JOE DEPAOLA (T)		Equipment Time			
Food Unit		REE ELLA VONBORSTEL		Equipment Time			
Security Unit		RONNIE OROPEZA		Personnel Time			
Ordering Manager		DONNA DIXON / NOE REYES (T) / MICHAEL SMITH (T)		Personnel Time			
Receiving & Distribution		KARLIS LAZDA / ED JENSEN		Comp/Claims Unit			
Base Camp Manager		MATT AXE (T) / BEN WALKER (T)		Cost Unit			
				ICPI			
				LEO ROBB			
9. Prepared by:		JAMES MAHAFFY		Date:		9/13/2023	
				Signature:		Sue Puddy, PSC2	



# Fire Weather Forecast



**FORECAST NO:** 15  
**FORECAST FOR:** Thursday Day Shift  
**SHIFT DATE:** 09/14/2023  
**DATE AND TIME ISSUED:** 09/13/2023 at 2000

**NAME OF FIRE:** Umpqua Fires  
**UNIT:** OR-UPF  
**SIGNED:** Steve Bodnar - Incident Meteorologist  
 405-203-9850 (cell) / stephen.bodnar@noaa.gov

**WEATHER DISCUSSION:** The next 48 hours will be very warm and dry as high pressure centers over southwestern Oregon. This will promote light winds drifting from the east overnight and early morning then west to northwest in the afternoon. The airmass will reach its driest point early Friday morning with poor overnight recoveries expected. Along thermal belts, recoveries could be closer to 30%.

## THURSDAY:

**WEATHER:** Sunny. Warmer and drier with light winds.

	Max Temperatures	Minimum Relative Humidity
<b>Valleys</b> (2500-3500 ft)	88-94° (Up 6-8)	13-19% (Down 7-15%)
<b>Ridges</b> (3500-4500 ft)	81-87° (Up 6-8) **	20-26% (Down 8-15%) **

\*\*Sheltered Valleys on north aspects will experience temps/RH similar to ridge forecast.

## **20-FOOT WINDS:**

**Valleys and Slopes:** Upslope/upvalley 2 to 6 mph. Slopes and valleys aligned with west to northwest general winds, speeds increasing 5 to 9 mph gusts to 12 mph.

**Ridgetops:** East 3 to 6 mph in the morning becoming northwest 6 to 9 mph gusts up to 15 after 1100.

**AVIATION:** No aviation concerns.

**CWR (≥ 0.25"):** 0%      **LAL:** 1      **HAINES:** 5      **INVERSION BREAK/MH:** 1000 hrs/ 6500 ft  
**CAMP FORECAST:**      **Strader ICP:** 91F      **Sharps Creek Base Camp:** 88F

## THURSDAY NIGHT:

**WEATHER:** Mostly clear with poor overnight recoveries.

	Min Temperatures - trend	Maximum Relative Humidity - trend
<b>Valleys</b> (2500-3500 ft)	52-58° - warmer	45-55% - Significantly Drier
<b>Ridges</b> (3500-4500 ft)	54-60° - warmer	35-50% - Significantly Drier

## **20-FOOT WINDS:**

**Valleys and Slopes:** Downslope/drainage 0 to 4 mph.

**Ridgetops:** East/southeast 3 to 7 mph.

**CWR (≥ 0.25"):** 0%      **LAL:** 1      **INVERSIONS:** Very shallow inversions overnight setting after 2100  
**CAMP FORECAST:**      **Strader ICP:** 57F      **Sharps Creek Base Camp:** 58F

**EXTENDED OUTLOOK:** Warm and dry conditions continue through the weekend with some modification. Winds will be light and generally from the east overnight and northwest in the afternoon. Systems approaching Oregon late Sunday into Monday will bring cooler temperatures, higher humidity, and slight chance (15%) for showers.

**PLEASE submit weather observations to the IMET - \*\*Snap a picture of observations and text to # above\*\***

# FIRE BEHAVIOR FORECAST

<b>FORECAST NUMBER:</b> 15	<b>TYPE OF FIRE:</b> Wildfire
<b>FIRE NAME:</b> Umpqua Fires	<b>OPERATIONAL PERIOD:</b> 0700-1900 hrs. Thursday September 14, 2023
<b>DATE ISSUED:</b> Wednesday September 13, 2023	<b>TIME ISSUED:</b> 19:30 Hours
<b>UNIT:</b> Umpqua National Forest	<b>SIGNED:</b> Sarah Bush – FBAN

## INPUTS

**WEATHER SUMMARY:** See Fire Weather Forecast for Details

### FUELS:

Fuels in the fire area are primarily composed of *Timber Litter*, and *Timber Understory with moss/lichen present in most stands*. Mature conifer stands with western hemlock and Douglas fir present, generally have heavy surface fuel loading. 30 to 50+ year old second growth conifer stands contain needle litter and some down woody debris. Brush and reproduction present in areas with less dense canopies.

Dinner, Brice, Grizzly- Forecast -ERC 82<sup>nd</sup> percentile. Yesterday's obs. 1hr-11%, 10hr-18%, 100hr-16%, 1000hr-18%  
Chilcoot & Ridge- Forecast -ERC 88<sup>th</sup> percentile. Yesterday's obs. 1hr-11%, 10hr-16%, 100hr-16%, 1000hr-17%

## OUTPUTS

### FIRE BEHAVIOR GENERAL:

The high-pressure system over SW Oregon is bringing hotter and drier conditions over the fire areas. The 1000-hr fuels are slowly losing moisture due to these conditions, making them more available to fully consume. Expect lichen to be completely available to burn in mature stands of timber with potential for torching, due to RH less than 30%.

Exposed one and 10-hr fuels will be more available due to drying. Creeping and smoldering in surface fuels will be the most common fire behavior in areas with active burning.



### Fire Danger—Umpqua National Forest

#### Local Thresholds – Watch Out: Combinations

of any of these factors can greatly increase fire behavior:

20' Wind Speed over 13 mph, RH less than 25%,

Temperature over 85, 1000-Hour Fuel Moisture less than 12%

### FIRE BEHAVIOR SPECIFIC:

#### Dinner, Brice, Grizzly, Chilcoot, and Ridge

Smoldering and creeping with isolated torching will be the main types of fire. Fire spread potential will be largely dependent on location, aspect, and exposure/sheltering. Southern aspects may see areas where 1-hr and 10-hr fuels become significantly more available to carry fire in the peak of the day.

Areas of heavy dead and downed fuels will continue to fully consume.

Fires with black edge up to containment features should experience minimal fire behavior and isolated to interior portions of the fire.

**Spotting distance up to 0.2 mi, Probability of Ignition- 60% shaded; 90% unshaded**

**Initial Attack:** In the event resources respond to a new start, recognize that fuels, topography, and conditions may be different than areas you have previously worked in.

**AIR OPERATIONS:** Warm and dry today. No concerns.

## SAFETY

Base all actions on current and expected fire behavior. The fire environment will be experiencing 2 of the 4 local thresholds for increased fire behavior, temperature >85 and Rh < 25%.

<b>AIR OPERATIONS SUMMARY 220</b>	Prepared/Approved: Doug Ledgerwood	Prepared Time: 1800 hrs.
<b>1. INCIDENT NAME:</b> <b>UMPQUA FIRES</b>	<b>2. OPERATIONAL PERIOD</b> 09/14/2023	<b>START TIME:</b> 0700
	<b>END TIME:</b> 1900	<b>SUNRISE:</b> 0651
		<b>SUNSET:</b> 1924

**3. REMARKS** (Safety Notes, Hazards, Air Operations Special Equipment, etc.).  
**Smoky conditions \* Steep terrain \* Shadow effects**  
**Only use approved dip sites. Do not cross contaminate water sources without sanitizing bucket/snorkel. All GPS data to be collected in DEGREES MINUTES, DECIMAL MINUTES.**  
 Avoid foam within 300' of waterways or bodies of water. Notify AOBD if this is not achieved  
 Aircraft costs daily to: [2023.chilcoot.finance@firenet.gov](mailto:2023.chilcoot.finance@firenet.gov) and cc to [2023.chilcoot.airops@firenet.gov](mailto:2023.chilcoot.airops@firenet.gov)

**4. READY ALERT AIRCRAFT:**  
**N234BH Yellowstone Short Haul:**  
 @Grants Pass.  
**N38HX Teton Short Haul @**  
 Walterville.

**5.TFR: #3/9930 (A30) North**  
 Freq 121.3750  
 Surface to 9000ft MSL  
 Operational 1500-0400 UTC  
**TFR: #3/7750 (A51) South**  
 Freq:132.525  
 Surface to 8500 MSL  
 Operational 1630-0400 UTC

PERSONNEL	NAME	PHONE #
<b>Glide Helibase</b>		
AOBD	Doug Ledgerwood	541-852-0633
ASGS	Kevin Kozak	360-280-6714
ASGS(t)	Simon Driskell	541-728-8724
HEBM	Matt Quezada	760-379-6995
HEBM(t)	Mario Melendez	661-912-8235
ORRIC	Aircraft Desk	541-957-3325
UAO	Jim Dotson	307-413-2024
<b>9FF HMGB Juan Torrealday: 775-293-3065</b> Cottage Grove For IA: send flight strip to <a href="mailto:matt.quezada@usda.gov">matt.quezada@usda.gov</a> HEBM(t) <a href="mailto:Mario.melendez@usda.gov">Mario.melendez@usda.gov</a>		

7. FREQUENCIES	AM	FM
A/A TFR and Primary North	121.3750	
A/G Primary (A4) North		165.9875
A/G Secondary (A5) North		173.5000
A/A TFR and Primary South	132.525	
A/G Primary CMD(A6) South		167.1500
A/G Secondary Tac 1 South (A7)		170.2625
Deck Tone-156.7(TX/RX)		163.1000
IA A/G 49 USFS		168.0375
IA A/G 81 USFS		166.9500
VMED29 Tone 156.7(TX/RX)		155.3475
CTAF		122.8
Air Guard Tone 110.9 (TX)		168.6250

8. FIXED-WING Avail/ Type/ Make-Model/ N#/ Base
<b>AIRTANKERS: ORDER THRU ATGS</b>
<b>ATGS – order through Roseburg Dispatch</b>
Landing Sites on Fire: See pilot map Layng Cr Helispot: 43°42.698'N X 122°42.114'W 1224ft Cottage Grove S61: 43°48.246'N X 123°1.923'W 641ft  Glide Helibase 43° 18.922' X 123° 4.415'
<b>LAKE DIPS:</b>
Gertrude LK 43°35.698'N X 122°32.452'W 3990 ft
Crawfish Lk 43°37.502'N X 122°42.222'W 4794 ft
Crystal Lk 43°35.602 N X 122°38.655 W 4650 ft
Elephant Lake 43°35.742 X 122°39.237 W 5126 ft

Tank Dips: See Pilot Map

FAA N#	T Y	MAKE/ MODEL	BASE	START	AVAIL	REMARKS	FAA N#	T Y	MAKE/ MODEL	BASE	START	AVAIL	REMARKS
N274TH (A-9)	1	UH-60	Glide	0700	0800	Out of Service	N519FF (A-6)	3	AS 350	Cottage	0700	0800	6 personnel
526MW (A-10)	1	KMAX	Glide	0700	0800								
N933CH(A-39)	2	Bell 205 A1	Glide	0700	0800	15 personnel							
H377PA(A-20)	2	Bell 212	Glide	0700	0800	8 personnel	NR474A	3	UR-31(A-26)	Glide	0700		Ryan Gregg Mngr: 360-852-2296
32HX (A-19)	3	AS 350	Glide	0700	0800	11 personnel							

# HEALTH AND SAFETY MESSAGE

***SAFETY*** starts with ***YOU***

We are **ALL** accountable for **SAFE** behaviors

INCIDENT: Chilcoot/Grizzly/Dinner/Ridge/Brice      DATE: 9/14/2023      TIME: 24 Hours

## **Major Hazards and Risks:**

- **Distraction**-It's all around us, transition, demise of the Pac-12, busy fire season, personal life, whatever it is, keep your head in the game!
- **Complacency**-Small accidents are starting to occur, maintain our vigilance and SA. Resources are starting to forget PPE. **HAVE IT, WEAR IT**, or earn a one-way trip home.
- **Driving**-Fatigue, long drive times, animal encounters, sun angle, dusty windshields, narrow roads, soft shoulders, traffic.

## Fire Order of the Day – Maintain Control of your forces at all times

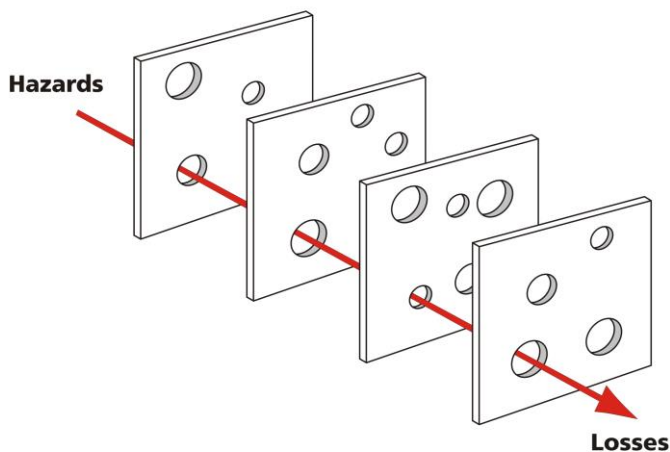
### Narrative:

**COMPLACENCY/DRIVING**-Work with your folks, slow down to go fast. Utilize backers, chock your tires, do PM checks and re-evaluate your SA.

**RESPIRATORY ILLNESS**-Ensuring adequate rest periods, proper hydration, good hygiene, and adequate nutrition will help boost immune function to fight against camp crud, heat illness and other ailments.

**HORNETS/WASPS**-They are Hungry, Angry and want to fight you. They will Sting and Bite you for the sheer joy of doing so. Avoid them, remove food sources, and mark known nests.

## **Swiss Cheese Model**



Little problems, add up to become larger ones. We can't ignore those small failures; they may be signs of larger system failures. Recognizing these early warning signs can prevent major injuries!

## **Driving Safety**

- Has anyone else noticed that as the days go by on the incident and the assignments become less challenging/or routine we tend to drop our guard and make careless mistakes?
- To prevent accidents, make concessions to other drivers who are thoughtless, unskilled, or ignorant of the hazards they create. Drive defensively and yield the right-of-way even when by all rules of the road it is yours.
- Keep well to the right side on narrow roads and blind curves. Be able to stop within less than half of the visible distance. However, don't drive on the shoulders that may be soft and give way easily.
- Keep headlights, taillights, mirrors, and all windows clean and clear. When conditions limit visibility, slow down, and double check to ensure your lights are on.

## LOGISTICS

Email orders to [2023.chilcoot.ordering@firenet.gov](mailto:2023.chilcoot.ordering@firenet.gov)

### Strader ICP

Location	Glide East of Green Bridge north on French Creek Road
Supply	Hours: 0630 - 2200
Ground Support	Hours: 0630 - 2200
Fuel Truck	Hours: 0630 - 2100
Weed Wash	Hours: 0700 - 2000
Meals	Hours: Breakfast 0530-0930    Dinner 1800 - 2200
Laundry	Hours: 0500 - 2200
Showers	Hours: 0500 – 1200 & 1400-2200

### Sharps Creek Base Camp    Email orders to [2023.dinner.ordering@firenet.gov](mailto:2023.dinner.ordering@firenet.gov)

Location	73792 Sharps Creek Road Dorena, OR
Supply	Hours: 0600 - 2130
Ground Support	Hours: 0600 - 2200
Fuel Truck	Hours: 0600 - 2200
Weed Wash	Hours: 0700 - 2000
Meals	Hours: Breakfast 0530-0900    Dinner 1700 - 2100
Laundry	Hours: 0600 -1300 & 1700 - 2200
Showers	Hours: 0500 – 1200 & 1400-2200

### 1-Mile Hose Kit for PNW Team 6

*Please note this is what will be sent out with an order for a 1- mile hose kit from supply with Team 6.*

NFES	QUANTITY	ISSUE	DESCRIPTION
1239	50	LG	1 1/2" Hose
1238	25	LG	1" Hose
1016	50	LG	3/4" Hose
0010	25	EA	Reducers 1 1/2" to 1"
0733	20	EA	Reducers 1" to 3/4"
0231	25	EA	1 1/2" Gated Wyes
0259	20	EA	1" Gated Wyes
0904	25	EA	3/4" Gated Wyes
0024	25	EA	Forrester Nozzles
0136	25	EA	Garden Nozzle
0738	25	EA	3/4" Shut Off
0664	2	EA	Fold a Tank 1500 gal
3870	2	EA	Mark III Kits
0606	3	EA	Can, safety
7724	3	EA	Oil, 2 stroke mix
0805	3	EA	Tags, 2 stroke
0148	2	EA	Pump, Mk III



# INCIDENT RADIO COMMUNICATIONS PLAN (ICS 205)

Controlled Unclassified Information //Basic

<b>1. Incident Name:</b>		<b>2. Date/time Prepared:</b>		<b>3. Operational Period:</b>						
Umpqua Fires- Cottage Grove		Date: 09/13/23 Time: 1530		Date/time From: 09/14/23 0700 HRS Date/Time To: 09/14/23 1900 HRS						
<b>4. Basie Radio Channel Use:</b>										
Zone Group	Ch #	Function	Channel Name/Trunked Radio System Talk Group	Assignment	RX Freq	RX Tone/NAC	TX Freq	TX Tone/NAC	Mode (A.O. 0<M)	Remarks
	1	TACTICAL	TAC 1	DIV A	168.0500	100.0	168.0500	100.0	A	DIVISION ALPHA TACTICAL-BRICE FIRE
	2	TACTICAL	TAC 2	DIV C	168.2000	100.0	168.2000	100.0	A	DIVISION CHARLIE TACTICAL-BRICE FIRE
	3	TACTICAL	TAC 3	DIV D	168.6000	100.0	168.6000	100.0	A	DIVISION DELTA TACTICAL-DINNER FIRE
	4	TACTICAL	TAC 4	DIV S	166.7250	100.0	166.7250	100.0	A	DIVISION SIERRA/ZULU TACTICAL-GRIZZLY FIRE
	5	TACTICAL	TAC 5	CURRENTLY UNASSIGNED	166.7750	100.0	166.7750	100.0	A	CURRENTLY UNASSIGNED
	6	TACTICAL	TAC 6	CURRENTLY UNASSIGNED	168.2500	100.0	168.2500	100.0	A	CURRENTLY UNASSIGNED
	7	COMMAND	CMD 7	COMMAND	170.0625	100.0	162.4375	100.0	A	COMMAND 7-LOCATED ON FAIRVIEW LOOKOUT
	8	COMMAND	CMD 8	COMMAND	169.6125	100.0	162.5125	100.0	A	COMMAND 8- CULP CREEK/SHARPS CAMP
	9	EMPTY	EMPTY	EMPTY						EMPTY CHANNEL/FUTURE EXPANSION
	10	FOREST REPEATER	FAIRVIEW LO	ALL RESOURCES	170.5500	103.5	164.8000	173.8	A	UPF N FAIRVIEW REPEATER
	11	TACTICAL	ODF RED	IA ONLY	151.3400	156.7	151.3400	156.7	A	INITIAL ATTACK USE ONLY
	12	AIR OPS	A/G 49	IA ONLY	168.0375	NONE	168.0375	NONE	A	INITIAL ATTACK USE ONLY
	13	AIR TO GROUND	A/G PRI	AIR TO GROUND PRIMARY	165.9875	NONE	165.9875	NONE	A	AIR TO GROUND OPERATIONS PRIMARY
	14	AIR TO GROUND	A/G SEC	AIR TO GROUND SECONDARY	173.5000	NONE	173.5000	NONE	A	AIR TO GROUND OPERATIONS SECONDARY
	15	AIR TO GROUND	V/MED29	MEDICAL	155.3475	156.7	155.3475	156.7	A	MEDICAL EVACUATION ONLY
	16	AIR GUARD	AIR GUARD	ALL DIVS	168.6250	NONE	168.6250	110.9	A	EMERGENCY USE ONLY
<b>5. Special Instructions:</b>										
<b>6. Prepared By</b>				Name: Troy McMillan	Signature: <b>TROY MCMILLAN</b>					
(Communications Unit Leader)					Digitally signed by TROY MCMILLAN Date: 2023.09.13 19:08:29 -0600					
Communications staffed 0700-1900 hours. Phone: (949) 648-1591				<b>IAP Page</b>		Date/Time: 09/13/23 1800 HRS				

# INCIDENT RADIO COMMUNICATIONS PLAN (ICS 205)

Controlled Unclassified Information //Basic

<b>1. Incident Name:</b>		<b>2. Date/Time Prepared:</b>		<b>3. Operational Period:</b>						
UMPQUA FIRES-NORTH UMPQUA		Date: 09/13/23 Time: 1530		Date/Time From: 09/14/23 0700 HRS						
				Date/Time To: 09/14/23 1900 HRS						
<b>4. Basie Radio Channel Use:</b>										
Zone Group	Ch #	Function	Channel Name/Trunked Radio System Talk Group	Assignment	RX Freq	RX Tone/NAC	TX Freq	TX Tone/NAC	Mode (A.O. 0<M)	Remarks
	1	TACTICAL	TAC 1	DIV J	168.0500	167.9	168.0500	167.9	A	DIVISION JULIET TACTICAL
	2	TACTICAL	TAC 2	DIV E	168.2000	167.9	168.2000	167.9	A	DIVISION ECHO TACTICAL
	3	TACTICAL	TAC 3	DIV H	168.6000	167.9	168.6000	167.9	A	DIVISION HOTEL TACTICAL
	4	TACTICAL	TAC 4	CONTINGENCY	166.7250	167.9	166.7250	167.9	A	CONTINGENCY TACTICAL
	5	TACTICAL	TAC 5	DIV W	166.7750	167.9	166.7750	167.9	A	DIVISION WHISKEY TACTICAL
	6	TACTICAL	TAC 6	CURRENTLY UNASSIGNED	168.2500	167.9	168.2500	167.9	A	CURRENTLY UNASSIGNED
	7	COMMAND	CMD 7	COMMAND	169.7500	167.9	167.1000	167.9	A	COMMAND 7-LOCATED ON SCOTT MOUNTAIN
	8	COMMAND	CMD 8	COMMAND	173.7125	167.9	162.6000	167.9	A	COMMAND 8- LOCATED ON PIG IRON LOOKOUT
	9	COMMAND	CMD 9	COMMAND	173.6000	167.9	169.4625	167.9	A	COMMAND 9- LOCATED ON CHILCOOT MOUNTAIN
	10	COMMAND	CMD 10	COMMAND	169.8375	167.9	162.4625	167.9	A	COMMAND 10- LOCATED ON RED BUTTE LOOKOUT
	11	FOREST REPEATER	CHILCOOT	ALL RESOURCES	170.5500	103.5	164.8000	192.8	A	UMF N CHILCOOT REPEATER
	12	FOREST REPEATER	PIG IRON	ALL RESOURCES	171.4125	103.5	166.0000	179.9	A	UMF N FAIRVIEW REPEATER
	13	AIR TO GROUND	A/G PRI	AIR TO GROUND PRIMARY	167.1500	NONE	167.1500	NONE	A	AIR TO GROUND OPERATIONS, PRIMARY
	14	AIR TO GROUND	A/G SEC	AIR TO GROUND SECONDARY	170.2625	NONE	170.2625		A	AIR TO GROUND OPERATIONS, SECONDARY
	15	AIR TO GROUND	V/MED29	MEDICAL	155.3475	156.7	155.3475	156.7	A	MEDICAL USE ONLY
	16	AIR GUARD	AIR GUARD	ALL DIVS	168.6250	NONE	168.6250	110.9	A	EMERGENCY USE ONLY
<b>5. Special Instructions:</b>										
<b>6.Prepared By</b>				Name: Troy McMillan						
(Communications Unit Leader)				Signature: <b>TROY MCMILLAN</b>						
Communications staffed 0600-2200 hours. Phone: (949) 648-1591										
Date/Time: 09/13/23 1800 HRS										



## FINANCE

Note: On the TOP of your CTR or ST please indicate Fire you were ordered on. Add in remarks section on CTR or ST Fire name you worked on.

### Finance Email:

**2023.dinner.finance@firenet.gov**

**2023.chilcoot.finance@firenet.gov**

### FINANCE CHECK IN:

**2023.dinner.finance@firenet.gov**

**2023.chilcoot.finance@firenet.gov**



CTR'S

Shift Ticket



### Required Financial Documents

Agency Overhead	Agency ADs / EFFs	Contract / Agency Crews	Cooperators
Resource Order	Resource Order	Resource Order	Resource Order
Signed CTRs	Casual Hire Form Signed CTRs	Manifest Agreement / Contract Schedule of Items Inspections Signed CTRs	Agreement Signed STs / CTRs

**PLEASE SEND CTR/SHIFT TICKET ELECTRONICALLY**  
**(In EMAIL subject: EX: TIME or CTR or SHIFT TICKET, RESOURCE ORDER, CASUAL HIRE FORM**  
**AND FIRST, LAST NAME)**  
**AND Fire Worked**

**Finance can be reached at:**

**Contractors: 971-713-0374; Overhead: 971-727-5250**

**COMP/CLAIMS – 971-245-0248**

**\*NOTE: If you are not able to submit an electronic version of your CTR or Shift Ticket. Please drop a hard copy in the Finance box. Make sure that a phone number is in the remarks section.**

# Information Section

Do you or the public need to reach the PIOs?

Phone: (541) 900-5862

Emails: Brice Creek/Dinner/Grizzly: [2023.dinner@firenet.gov](mailto:2023.dinner@firenet.gov)

Chilcoot/Ridge: [2023.chilcoot@firenet.gov](mailto:2023.chilcoot@firenet.gov)

Please email us your photos! (And don't forget your PPE 😊)



Chilcoot and Ridge Fires Information



Brice, Dinner, and Grizzly Fires Information

Scan the codes above to access links to each of the official sources of information on all five of the Umpqua Fires—from InciWeb to Facebook to email addresses, it's all there!

## Sharps Creek (Dorena PO)

Dorena Post Office: C/O (Your Name)  
75694 Wicks Road  
Dorena, OR 97434

### Notes on Dorena PO pick-up:

Persons picking up the mail must present ID for their mail.

Business hours:

9 AM- 1 PM Monday -Friday

11 AM- 12 PM Saturday

(Closed Sundays)

## Strader ICP (Glide ICP)

C/O (Your Name) Chilcoot Fire Camp  
373 French Creek Road  
Glide, OR 97443

Mail can be picked up with the PIOs at the Strader ICP in Glide.



**Call or visit us if you've lost something!  
We have a PIO shops in both Glide and  
Sharps Creek**



## Human Resource Message

### Umpqua Fires September 14, 2023

### Pre-School Pledge



### Preschool Pledge

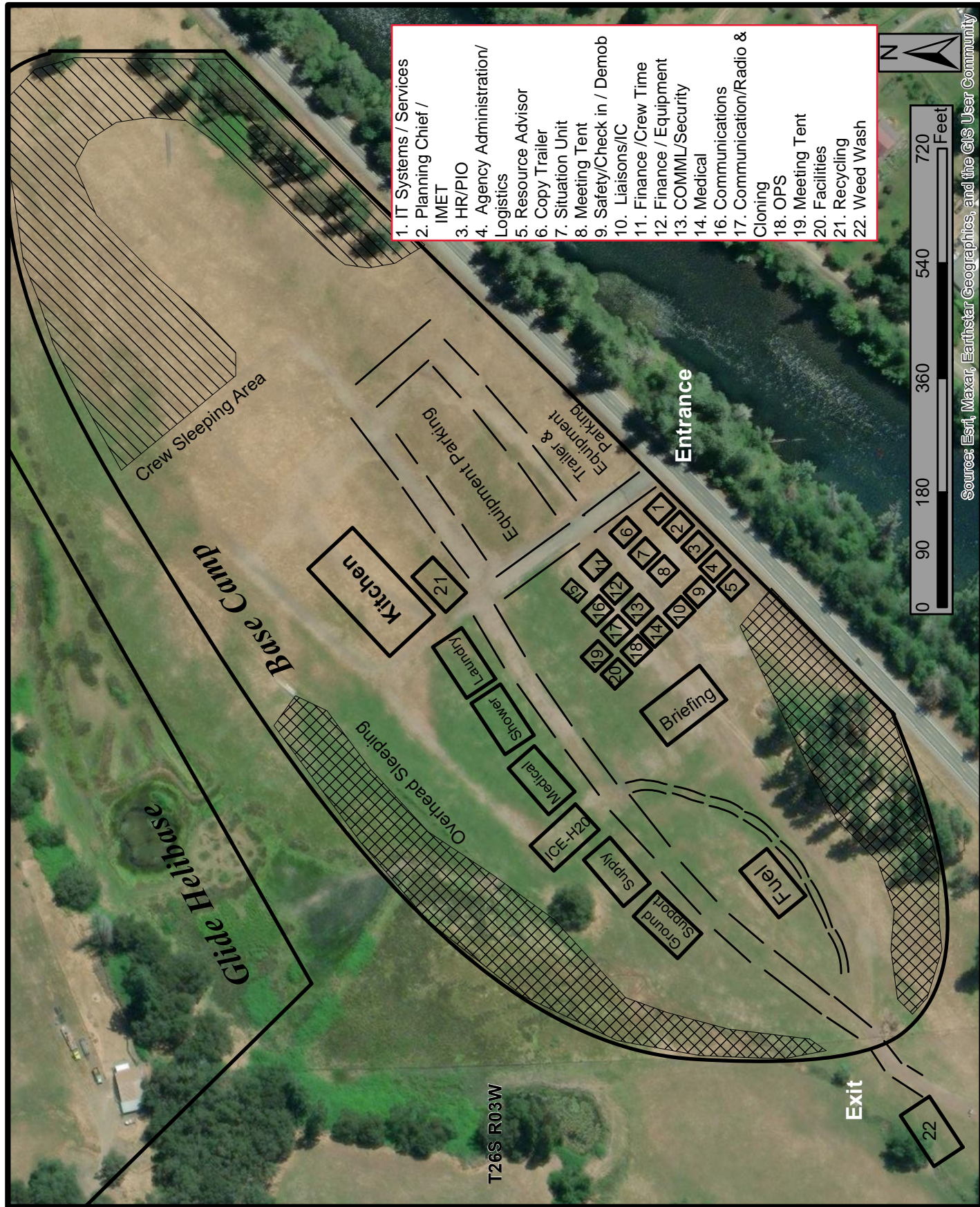
I pledge to myself on this day  
To try to be kind in every way  
To every person big or small  
I will help them if they fall  
When I love myself and others too  
That is the best that I can do.

You can reach me by text or phone call at 503-575-8547. You can visit my at my location here at the ICP in trailer 3.

Have a safe shift and have a great day!

Audrey Matsumonji  
Human Resource Specialist  
(503)575-8547

# Chilcoot ICP Basecamp Map



Source: Esri, Maxar, Earthstar Geographics, and the GIS User Community

# Extensions and Crew Swaps – NW 6

This is the Team Standard Operating procedure based on national policy

- Resources ordered as 'O' numbers cannot swap crew members (except some medical resources). They can extend an additional 7 or 14 days, depending on their availability and the needs of the incident. See Plans for an extension form.
- Contract Crews are generally not extended unless replacement resources are scarce
- Hand crews may swap crew members if needed, the IMT must be notified through the crew swap form through the QR code
- Resources may be demobed regardless of crew status if it is no longer needed
- Contract equipment may stay on the incident until is no longer needed, a maximum dollar amount is reached, or replacement operators cannot be provided
- It is the responsibility of the Contract Owner to track their workers and ensure the workers maintain proper work/rest
- The IMT will assume contracted equipment will swap crew members as necessary to provide adequate rest for their workers
- Non-fireline equipment personnel (like hand wash stations) are not tracked other than a current, onsite contact
- Specific to Contracted Fireline Equipment
  - If replacement personnel cannot be provided, this information must be documented on an ICS-213, provided to Operations and Plans at least 72 hours prior to the 14<sup>th</sup> workday, and the resource will be demobed after 14 shifts. Or, an extension form may be completed under certain circumstances, based on operational need, see Plans for this form.
  - Crew swaps/replacements **MUST** be tracked through the provided QR code form (or a previously obtained form from a past IMT) as soon as known and/or at least by 1800 the day prior to the change. If the new worker is the primary operator and any information in the IAP is incorrect, correct information **MUST** be provided to their Division Sup immediately following the operational briefing/division breakout.
  - Replacement workers must provide proof of current annual training upon request
  - The IMT will **NOT** track a last work day for these resources in the IAP unless
    - It was determined to be excess to the needs of the incident and will demob
    - A resource was unable to provide replacement workers and will demob

Please contact Plans after the briefing, at their office at either camp, or at Check-in if you have questions or wish to understand how your last work day/demob date was determined.

Umpqua Fires 2023 - Chilcoot,  
Ridge, Grizzly, Brice Creek, and  
Dinner



### Demob List for Thursday 09/14/2023

<b>DINNER – BRICE CREEK - GRIZZLY FIRES</b>				
NO SCHEDULED DEMOBES				
<b>CHILCOOT – RIDGE FIRES</b>				
C-4	0800	CRW1	LONE PEAK IHC	RIDGE
E-101	0800	ENG4	FRANCO	CHILCOOT
E-103	0830	ENG5	A & H FORESTRY	CHILCOOT
E-111	0900	WTT1	IDAHO HEATSEEKER	CHILCOOT
O-108	0800	REAF	BOLYARD, CHASE	CHILCOOT
O-144	0815	REAF	WALSH, KATHLEEN	CHILCOOT
O-147	0830	PIOT	BUCICH, MISTI-KAI	CHILCOOT
O-157	0845	REAF	KIM, SOPHIA	CHILCOOT

### Demob List for Friday 09/15/2023

<b>DINNER – BRICE CREEK - GRIZZLY FIRES</b>				
C-8	0800	CRW1	PIONEER PEAK IHC	DINNER
C-9	0830	CR2I	SANTIAM RIVER	DINNER
C-10001	0900	CRWC	NORTH PACIFIC FORESTRY	DINNER
E-1	0800	AMB2	TRI COUNTY AMBULANCE	DINNER
E-11	0815	ENG6	BIG BEAR LOGGING	BRICE
E-44	0830	ENG4	HI COUNTRY	DINNER
E-63	0845	AMB2	WILDERNESS MEDICS	DINNER
E-68	0900	ENG6	OVERWATCH ENTERPRISE	DINNER
O-90	0800	LSCC	FOOTEN, PAUL	DINNER
<b>CHILCOOT - RIDGE FIRES</b>				
C-32	0800	CRW1	IDAHO PANHANDLE IHC	CHILCOOT
E-104	0800	ENG6	WOODPECKER	CHILCOOT
E-106	0815	ENG6	FIRST STRIKE	CHILCOOT
E-109	0830	DZR2	GIESBRECHT	CHILCOOT
E-134	0845	PUP1	MNGLR	CHILCOOT
E-137	0900	WTS2	ON THE GO	CHILCOOT
E-138	0915	WTS2	COWBOY FIRE	CHILCOOT
E-10016	0930	CHP2	ODF IRA TORRES CONTRACTING	CHILCOOT
E-10017	0945	CHP2	ODF IRA TORRES CONTRACTING	CHILCOOT
O-92	0800	TFLD	MARK, ERIC	CHILCOOT
O-133	0815	FMOD	PACIFIC RIDGELINE	CHILCOOT
O-181	0830	TFLD	MARSHALL, JANSON	CHILCOOT
O-187	0845	WFM2	WILDLAND FIRE T2	CHILCOOT
O-10013	0900	TFLD	DAVIS, LOGAN	CHILCOOT
O-112	0915	RADO	CABRERA, ANTHONY	CHILCOOT
O-154	0930	COMT	SCHERER, PAUL	CHILCOOT
O-166	0945	ASGS	DRISKELL, SIMON	CHILCOOT
O-193	1000	RADO	CURNOW, MACY	CHILCOOT
O-188	1800	TFLD	SHIELDS, RUSSEL	CHILCOOT



## Demob List for Saturday 09/16/2023

<b>DINNER – BRICE CREEK - GRIZZLY FIRES</b>				
E-14	0800	ENG6	FRANCO REFORESTATION	BRICE
E-42	0815	ENG4	METHOW RIVER WILDFIRE	DINNER
E-6	0830	GRD1	MARK JONES TRUCKING	GRIZZLY
O-2	0800	FMOD	CREEL CUTTING	GRIZZLY
O-73	0815	DIVS	LUCAS, JEFF	DINNER
O-80	0830	MEDL	CISNEROS, ANGELA	DINNER
O-83	0900	RADO	MOAG, HUGH	DINNER
O-59	1800	BCMG	DIXON, JEFFREY	DINNER
<b>CHILCOOT - RIDGE FIRES</b>				
C-33	0800	CR2I	GRAYBACK 16C	CHILCOOT
E-102	0800	ENG4	INBOUND	CHILCOOT
O-176	0830	EMTF	WILDLAND MEDICS	CHILCOOT
O-161	0900	COMT	EWENS, LEIGHTON	CHILCOOT

# Umpqua Fires

## Demob Check-Out Instruction Form

Pick up Demob Check-Out form at BRIEFING (IAP) or PLANNING to begin Process

RO # \_\_\_\_\_ Resource Name \_\_\_\_\_ Fire: \_\_\_\_\_ Date: \_\_\_\_\_

### Initial

**Follow these steps in the order below:**

- \_\_\_\_\_ 1. **Weed Wash** – ALL line resources that went off-road will need to go through a Weed Wash in your specific fire location. **If not needed, proceed to step 2.**
- \_\_\_\_\_ 2. **Ground support** – Contractors must stop to sign their release inspection. The inspection is optional for agency resources. **Agency resources proceed to step 3.**
- \_\_\_\_\_ 3. **Supply** – Return any items you checked out. All units must have an initial from SUPPLY confirming all equipment has been returned.
- \_\_\_\_\_ 4. **Communications** – Return any items you checked out. All units must have an initial from COMMUNICATIONS confirming all radio equipment has been returned.
- \_\_\_\_\_ 5. **Finance** – Proceed to finance to receive your final timesheet. Having ALL your times turned in and up to date will GREATLY speed up the process.
- \_\_\_\_\_ 6. **Demob – Final step.** Return completed Demob Check-Out form and any Documentation to Demob/Check-in. Contact Demob at 509-432-6143 with your estimated time of departure, arrival time and destination. You will not be released from the incident with Dispatch until this is completed.

### ALL AIR TRAVELERS

Submit your request 72 hours prior to flight date through the QR Code on the IAP Cover. Call 509-432-6143 for any questions or assistance.

### NIGHT SHIFT PERSONNEL

All night shift personnel coming off the line will be required to meet work/rest requirements before completing the Demob process.

### EXTENSIONS AND CREW SWAPS

All extension/crew swap processes **should be done at least 48 hours** before your last working day to help facilitate Operational resources and the Demob process.

**Division/Group Assignment List (ICS 204 WF)**  
**Controlled Unclassified Information//Basic**

<b>1. Incident Name:</b>				<b>3.</b>		
UMPQUA FIRES				<b>Branch:</b>	<b>Division/Group</b>	
<b>2. Operational Period: DAY</b>						
Date/Time From: 09/14/2023 0700 THU		Date/Time To: 09/14/2023 1900 THU		<b>BRICE CREEK A</b>		
<b>4. Operations Personnel</b>						
<b>OPERATIONS CHIEF</b> DAN MARTIN		<b>BRANCH DIRECTOR</b>				
<b>SAFETY OFFICERS</b> ERIC RISDAL SHANE THEALL		<b>DIVISION/GROUP SUPERVISOR</b>		LOGAN LAWSON		
<b>5. Resources Assigned this Period</b>						
Strike Team / Task Force / Resource Designator	LWD	Leader	Number Persons	Drop Off PT./Time	Pick Up PT./Time	
O-240.32 SOF2	09/26	AL AUGUSTINE	1	SHARPS CREEK BASECAMP/0700	SHARPS CREEK BASECAMP/1900	
C-8.25 TFLD	09/14	THOMAS J ENZI	1	SHARPS CREEK BASE CAMP/0700	SHARPS CREEK BASE CAMP/1900	
O-240.69 TFLD (T)	09/25	MICHEAL DAKE	1	SHARPS CREEK BASE CAMP/0700	SHARPS CREEK BASE CAMP/1900	
C-17 CR2I VALE SRV #12	09/23	JULIAN I JACOBO	24	SHARPS CREEK BASE CAMP/0700	SHARPS CREEK BASE CAMP/1900	
E-39 ENG4 STERLING SYSTEMS	09/16	BRIAN MOORE	3	SHARPS CREEK BASE CAMP/0700	SHARPS CREEK BASE CAMP/1900	
E-68 ENG6 OVERWATCH ENTERPRISE	09/14	STEVEN ROBERTSON	2	SHARPS CREEK BASE CAMP/0700	SHARPS CREEK BASE CAMP/1900	
E-2 WTS2 RHY-DEM	09/24	RUSSEL ROBINSON	1	SHARPS CREEK BASE CAMP/0700	SHARPS CREEK BASE CAMP/1900	
O-85 REMS HART (REMS 2)	09/17	SUEANN MURPHY	4	SHARPS CREEK BASE CAMP/0700	SHARPS CREEK BASE CAMP/1900	
O-129 REAF	09/23	JEDIDIAH HANCOCK	1	SHARPS CREEK BASE CAMP/0700	SHARPS CREEK BASE CAMP/1900	
E-1 VUTV TOP GUN				SHARPS CREEK BASE CAMP/0700	SHARPS CREEK BASE CAMP/1900	
E-16 VUTV TOP GUN				SHARPS CREEK BASE CAMP/0700	SHARPS CREEK BASE CAMP/1900	
<b>8. Division/Group Communication Summary</b>						
Function	Channel	RX Frequency N/W	RX Tone/NAC	TX Frequency N/W	TX Tone/NAC	Mode
TACTICAL	TAC 1	168.0500	100.0	168.0500	100.0	A
COMMAND	CMD 7	170.0625	100.0	162.4375	100.0	A
COMMAND	CMD 8	169.6125	100.0	162.5125	100.0	A
AIR TO GROUND	A/G PRI	165.9875		165.9875		A
AIR TO GROUND	A/G SEC	173.5000		173.5000		A
AIR GUARD	AIR GUARD	168.6250		168.6250	110.9	A
<b>9. Prepared By (Resource Unit Leader)</b>		<b>Approved By (Planning Section Chief)</b>		<b>Date</b>	<b>Time</b>	
JAMES MAHAFFY RESL (T)		KRISANN KOSEL		09/13/2023	2200	



**Division/Group Assignment List (ICS 204 WF)**  
**Controlled Unclassified Information//Basic**

<b>1. Incident Name:</b>				<b>3.</b>		
UMPQUA FIRES				<b>Branch:</b>	<b>Division/Group</b>	
<b>2. Operational Period: DAY</b>						
Date/Time From: 09/14/2023 0700 THU		Date/Time To: 09/14/2023 1900 THU		<b>BRICE CREEK C</b>		
<b>4. Operations Personnel</b>						
<b>OPERATIONS CHIEF</b> DAN MARTIN		<b>BRANCH DIRECTOR</b>				
<b>SAFETY OFFICERS</b> ERIC RISDAL SHANE THEALL		<b>DIVISION/GROUP SUPERVISOR</b>		DOUG CATES		
<b>5. Resources Assigned this Period</b>						
Strike Team / Task Force / Resource Designator	LWD	Leader	Number Persons	Drop Off PT./Time	Pick Up PT./Time	
O-240.32 SOF2	09/26	AL AUGUSTINE	1	SHARPS CREEK BASE CAMP/0700	SHARPS CREEK BASE CAMP/1900	
O-4 TFLD	09/17	JACK MASTERS	1	SHARPS CREEK BASE/0700	SHARPS CREEK BASE/1900	
C-8.22 HEQB	09/14	SAMUEL ALLEN	1	SHARPS CREEK BASE CAMP/0700	SHARPS CREEK BASE CAMP/1900	
O-2 FMOD CREEL CUTTING	09/15	TYLER GRAVES	1	SHARPS CREEK BASE CAMP/0700	SHARPS CREEK BASE CAMP/1900	
C-9 CR2I SANTIAM RIVER	09/14	MATHIAS CUISON JR	19	LUND PARK/0700	LUND PARK/1900	
C-18 CR2I CENTRAL OREGON #05	09/24	TY PATTERSON	20	SHARPS CREEK BASE CAMP/0700	SHARPS CREEK BASE CAMP/1900	
E-10 ENG6 THREE STRIPES CONTRACTING	09/18	TIMOTHY PEARSON	3	SHARPS CREEK BASE CAMP/0700	SHARPS CREEK BASE CAMP/1900	
E-11 ENG6 BIG BEAR LOGGING	09/14	MIKE HOPKINS	3	SHARPS CREEK BASE CAMP/0700	SHARPS CREEK BASE CAMP/1900	
E-14 ENG6 FRANCO REFORESTATION	09/15	CHOY HUMERTO	3	SHARPS CREEK BASE CAMP/0700	SHARPS CREEK BASE CAMP/1900	
E-18 WTS2 IRELAND BROTHERS	09/23	ADAM FRASER	1	SHARPS CREEK BASE CAMP/0700	SHARPS CREEK BASE CAMP/1900	
E-10000 DZR2 R & L EXCAVATING	09/11	CHAD SCOFIELD	2			
E-12 CHP2 SALAMANDER INCIDENT SERVICES	09/17	ZACH UNDERWOOD	3	SHARPS CREEK BASE CAMP/0700	SHARPS CREEK BASE CAMP/1900	
<b>8. Division/Group Communication Summary</b>						
Function	Channel	RX Frequency N/W	RX Tone/NAC	TX Frequency N/W	TX Tone/NAC	Mode
TACTICAL	TAC 2	168.0200	100.0	168.0200	100.0	A
COMMAND	CMD 7	170.0625	100.0	162.4375	100.0	A
COMMAND	CMD 8	169.6125	100.0	162.5125	100.0	A
AIR TO GROUND	A/G PRI	165.9875		165.9875		A
AIR TO GROUND	A/G SEC	173.5000		173.5000		A
AIR GUARD	AIR GUARD	168.6250		168.6250	110.9	A
<b>9. Prepared By (Resource Unit Leader)</b>		<b>Approved By (Planning Section Chief)</b>		<b>Date</b>	<b>Time</b>	
JAMES MAHAFFY RESL (T)		KRISANN KOSEL		09/13/2023	2200	

**Division/Group Assignment List (ICS 204 WF)**  
**Controlled Unclassified Information//Basic**

<b>1. Incident Name:</b>				<b>3.</b>		
UMPQUA FIRES				<b>Branch:</b>	<b>Division/Group</b>	
<b>2. Operational Period: DAY</b>						
Date/Time From: 09/14/2023 0700 THU		Date/Time To: 09/14/2023 1900 THU		<b>BRICE CREEK C</b>		
<b>4. Operations Personnel</b>						
<b>OPERATIONS CHIEF</b>		DAN MARTIN		<b>BRANCH DIRECTOR</b>		
<b>SAFETY OFFICERS</b>		ERIC RISDAL SHANE THEALL		<b>DIVISION/GROUP SUPERVISOR</b> DOUG CATES		
<b>5. Resources Assigned this Period</b>						
Strike Team / Task Force / Resource Designator		LWD	Leader	Number Persons	Drop Off PT./Time	Pick Up PT./Time
E-63 AMBO WILDERNESS MEDICS (AMBO 4)		09/14	ANDREW LYMAN	2	SHARPS CREEK BASE CAMP/0700	SHARPS CREEK BASE CAMP/1900
O-129 REAF		09/23	JEDIDIAH HANCOCK	1	SHARPS CREEK BASE CAMP/0700	SHARPS CREEK BASE CAMP/1900
<b>6. Control Operations/Work Assignments:</b>						
<p>Task: Continue to hold, secure, and mop-up control lines. Monitor conditions in preparation to implement firing plan in direct areas. Complete contingency line preparation.</p> <p>Purpose: Prevent fire from impacting values at risk, including communities to the west, commercial timberlands and T&amp;E habitat.</p> <p>End State: Fire is kept north of 22 RD, south of the 2216 RD, and east of the 732 RD. To protect the values at risk through the remainder of the fire season.</p>						
<b>7. Special Instructions:</b>						
<ul style="list-style-type: none"> <li>All resources assigned to this division will add BRICE CREEK FIRE to all CTR and SHIFT TICKETS, OR-UPF-000359 P6QLI4. Ensure signage is adequate at all drop points.</li> <li>Add signage to all major intersections to help with locating drop points.</li> </ul>						
<b>8. Division/Group Communication Summary</b>						
Function	Channel	RX Frequency N/W	RX Tone/NAC	TX Frequency N/W	TX Tone/NAC	Mode
TACTICAL	TAC 2	168.0200	100.0	168.0200	100.0	A
COMMAND	CMD 7	170.0625	100.0	162.4375	100.0	A
COMMAND	CMD 8	169.6125	100.0	162.5125	100.0	A
AIR TO GROUND	A/G PRI	165.9875		165.9875		A
AIR TO GROUND	A/G SEC	173.5000		173.5000		A
AIR GUARD	AIR GUARD	168.6250		168.6250	110.9	A
<b>9. Prepared By (Resource Unit Leader)</b>			<b>Approved By (Planning Section Chief)</b>		<b>Date</b>	<b>Time</b>
JAMES MAHAFFY RESL (T)			KRISANN KOSEL		09/13/2023	2200

**Division/Group Assignment List (ICS 204 WF)**  
**Controlled Unclassified Information//Basic**

<b>1. Incident Name:</b>				<b>3.</b>		
UMPQUA FIRES				<b>Branch:</b>	<b>Division/Group</b>	
<b>2. Operational Period: DAY</b>						
Date/Time From: 09/14/2023 0700 THU		Date/Time To: 09/14/2023 1900 THU		<b>DINNER D</b>		
<b>4. Operations Personnel</b>						
<b>OPERATIONS CHIEF</b> DAN MARTIN		<b>BRANCH DIRECTOR</b>				
<b>SAFETY OFFICERS</b> ERIC RISDALL SHANE THEALL		<b>DIVISION/GROUP SUPERVISOR</b>		JEFF LUCAS		
<b>5. Resources Assigned this Period</b>						
Strike Team / Task Force / Resource Designator	LWD	Leader	Number Persons	Drop Off PT./Time	Pick Up PT./Time	
O-240 SOF2	09/26	AL AUGUSTINE	1	SPARPS CREEK BASE CAMP/0700	SPARPS CREEK BASE CAMP/1900	
E-11 ENG6 JD FORESTRY	09/16	FELIX DROESCH	3	SHARPS CREEK BASE CAMP/0700	SHARPS CREEK BASE CAMP/1900	
E-42 ENG4 METHOW RIVER WILD FIRE	09/15	CINDY GAMEROS	3	SHARPS CREEK BASE CAMP/0700	SHARPS CREEK BASE CAMP/1900	
E-64 AMBO ROUGH COUNTRY (AMBO 5)		JESSIE EVENS	2	SHARPS CREEK BASE CAMP/0700	SHARPS CREEK BASE CAMP/1900	
O-129 REAF	09/23	JEDIDIAH HANCOCK	1	SHARPS CREEK BASE CAMP/0700	SHARPS CREEK BASE CAMP/1900	
<b>6. Control Operations/Work Assignments:</b>						
<p>Task: Continue to patrol and secure fireline. Continue with fire suppression repair work.                  Purpose: Prevent fire from impacting values at risk, including communities to the west, commercial timberlands, T&amp;E habitat.                  End State: Fire is kept north of 1745 RD and south of 1746 RD to protect the values at risk through the remainder of the fire season.</p>						
<b>7. Special Instructions:</b>						
<ul style="list-style-type: none"> <li>All resources assigned to this division need to add DINNER FIRE OR-UPF-000357 P6QLF5 (0615) to your CTR's and Shift Tickets</li> </ul>						
<b>8. Division/Group Communication Summary</b>						
Function	Channel	RX Frequency N/W	RX Tone/NAC	TX Frequency N/W	TX Tone/NAC	Mode
TACTICAL	TAC 3	168.6000	100.0	168.6000	100.0	A
COMMAND	CMD 7	170.0625	100.0	162.4375	100.0	A
COMMAND	CMD 8	169.6125	100.0	162.5125	100.0	A
AIR TO GROUND	A/G PRI	165.9875		165.9875		A
AIR TO GROUND	A/G SEC	173.5000		173.5000		A
AIR GUARD	AIR GUARD	168.6250		168.6250	110.9	A
<b>9. Prepared By (Resource Unit Leader)</b>		<b>Approved By (Planning Section Chief)</b>		<b>Date</b>	<b>Time</b>	
JAMES MAHAFFY RESL(T)		KRISANN KOSEL		09/13/2023	2200	

**Division/Group Assignment List (ICS 204 WF)**  
**Controlled Unclassified Information//Basic**

<b>1. Incident Name:</b>				<b>3.</b>		
UMPQUA FIRES				<b>Branch:</b>	<b>Division/Group</b>	
<b>2. Operational Period: DAY</b>						
Date/Time From: 09/14/2023 0700 THU		Date/Time To: 09/14/2023 1900 THU		<b>GRIZZLY S/Z</b>		
<b>4. Operations Personnel</b>						
<b>OPERATIONS CHIEF</b> DAN MARTIN		<b>BRANCH DIRECTOR</b>				
<b>SAFETY OFFICERS</b> ERIC RISDAL SHANE THEALL		<b>DIVISION/GROUP SUPERVISOR</b>		RORY HIETT		
<b>5. Resources Assigned this Period</b>						
Strike Team / Task Force / Resource Designator	LWD	Leader	Number Persons	Drop Off PT./Time	Pick Up PT./Time	
O-36 SOFC	09/13	RICHARD M MCCONNELL	1	SHARPS CREEK BASE CAMP/0700	SHARPS CREEK BASE CAMP/1900	
O-240.32 SOF2	09/26	AL AUGUSTINE	1	SHARPS CREEK BASECAMP/0700	SHARPS CREEK BASECAMP/1900	
C-8 CRW1 PIONEER PEAK IHC	09/14	ALEX NELSEN	25	CEDAR CREEK/0700	CEDAR CREEK/1900	
O-209 STORM PEAK WFM	09/18	TIM CUSACK	13	SHARPS CREEK BASE CAMP/0700	SHARPS CREEK BASE CAMP/1900	
E-7 WTS3 PACIFIC RIDGELINE FORESTRY, LLC	09/21	JUSTIN RIOLO	1	SHARPS CREEK BASE CAMP/0700	SHARPS CREEK BASE CAMP/1900	
E-8 CHP2 DARRELL GREEN	09/20	STEVE MICHLITCH	3	SHARPS CREEK BASECAMP/0700	SHARPS CREEK BASECAMP/1900	
O-29 REMS BEYOND THE EDGE (REMS 1)	09/14	JOSEPH DECKER	1	SHARPS CREEK BASE CAMP/0700	SHARPS CREEK BASE CAMP/1900	
E-1 AMBO TRI COUNTY (AMBO 3)	09/14	LONNIE CAMP	2	SHARPS CREEK BASE CAMP/0700	SHARPS CREEK BASE CAMP/1900	
O-129 REAF	09/23	JEDIDIAH HANCOCK	1	SHARPS CREEK BASECAMP/0700	SHARPS CREEK BASECAMP/1900	
E-2 VUTV TOP GUN				SHARPS CREEK BASE CAMP/0700	SHARPS CREEK BASE CAMP/1900	
E-13 VUTV KD OUTDOORS LLC				SHARPS CREEK BASE CAMP/0700	SHARPS CREEK BASE CAMP/1900	
<b>8. Division/Group Communication Summary</b>						
Function	Channel	RX Frequency N/W	RX Tone/NAC	TX Frequency N/W	TX Tone/NAC	Mode
TACTICAL	TAC 4	166.7250	100.0	166.7250	100.0	A
COMMAND	CMD 7	170.0625	100.0	162.4375	100.0	A
COMMAND	CMD 8	169.6125	100.0	162.5125	100.0	A
AIR TO GROUND	A/G PRI	165.9875		165.9875		A
AIR TO GROUND	A/G SEC	173.5000		173.5000		A
AIR GUARD	AIR GUARD	168.6250		168.6250	110.9	A
<b>9. Prepared By (Resource Unit Leader)</b>		<b>Approved By (Planning Section Chief)</b>		<b>Date</b>	<b>Time</b>	
JAMES MAHAFFY RESL (T)		KRISANN KOSEL		09/13/2023	2200	





**Division/Group Assignment List (ICS 204 WF)**  
**Controlled Unclassified Information//Basic**

<b>1. Incident Name:</b>			<b>3.</b>			
UMPQUA FIRES			<b>Branch:</b>		<b>Division/Group</b>	
<b>2. Operational Period:</b> 0700 - 1900					CHILCOOT E	
Date/Time From: 09/14/2023 0700 THU	Date/Time To: 09/14/2023 1900 THU					
<b>4. Operations Personnel</b>						
<b>OPERATIONS CHIEF</b> DAN MARTIN		<b>SAFETY OFFICERS</b> ERIC RISDAL SHANE THEALL				
<b>BRANCH DIRECTOR</b>		<b>DIVISION/GROUP SUPERVISOR</b>		NICK PETERS		
<b>5. Resources Assigned this Period</b>						
Strike Team / Task Force / Resource Designator	LWD	Leader	Number Persons	Drop Off PT./Time	Pick Up PT./Time	
O-92 TFLD	09/14	ERIC MARK	1	STRADER ICP/0700	STRADER ICP/1930	
O-181 TFLD	09/14	JANSON MARSHALL	1	STRADER ICP/0700	STRADER ICP/1930	
O-240.71 TFLD(T)	09/25	MEGAN HURRELL	1	STRADER ICP/0700	STRADER ICP/1930	
C-47 CR2I SRV #10	09/23	ANDRES HERNADEZ	25	STRADER ICP/0700	STRADER ICP/1930	
C-33 CRW2 GRAYBACK FORESTRY	09/15	ROBERT PONDELICK	20	STRADER ICP/0700	STRADER ICP/1930	
E-188 ENG4 ORUPF E424	09/24	JEFF CASE	5	STRADER ICP/0700	STRADER ICP/1930	
E-183 ENG6 TIMBER TIPPER	09/24	MIKE CADE	3	STRADER ICP/0700	STRADER ICP/1930	
E-185 ENG6 GRAYBACK FORESTRY - E25	09/24	ARIC PAUL	3	STRADER ICP/0700	STRADER ICP/1930	
E-112 WTT1 HYDROTACTICAL INC	09/20	DANIEL WARNER	2	STRADER ICP/0700	STRADER ICP/1930	
E-178 WTS2 SIMONS EQUIPMENT	09/17	JOSETTE ROCHAT	1	STRADER ICP/0700	STRADER ICP/1930	
E-177 DZR2 PARKHURST EXCAVATION	09/18	KIESHA JOYSON	2	STRADER ICP/0700	STRADER ICP/1930	
O-72 REMS BACKCOUNTRY (REMS 11)	09/18	JOHN MYER	4	STRADER ICP/0700	STRADER ICP/1930	
E-32 AMBO UNLIMITED PARAMEDICS (AMBO 22)	09/18	SETH CRIBB	2	STRADER ICP/0700	STRADER ICP/1930	
O-64 EMPF	09/18	RICH DOBSON	1	STRADER ICP/0700	STRADER ICP/1930	
<b>8. Division/Group Communication Summary</b>						
Function	Channel	RX Frequency N/W	RX Tone/NAC	TX Frequency N/W	TX Tone/NAC	Mode
TACTICAL	TAC 2	168.2000	167.9	168.2000	167.9	A
COMMAND	CMD 7	169.7500	167.9	167.1000	167.9	A
COMMAND	CMD 9	173.6000	167.9	169.4625	167.9	A
AIR TO GROUND	A/G PRI	167.1500		167.1500		A
AIR TO GROUND	A/G SEC	170.2625		170.2625		A
AIR GUARD	AIR GUARD	168.6250		168.6250	110.9	A
<b>9. Prepared By (Resource Unit Leader)</b>		<b>Approved By (Planning Section Chief)</b>		<b>Date</b>		<b>Time</b>
STEPHANIE FALCON		KRISANN KOSEL		09/13/2023		2200

**Division/Group Assignment List (ICS 204 WF)**  
**Controlled Unclassified Information//Basic**

<b>1. Incident Name:</b>			<b>3.</b>			
UMPQUA FIRES			<b>Branch:</b>		<b>Division/Group</b>	
<b>2. Operational Period:</b> 0700 - 1900			CHILCOOT E			
Date/Time From: 09/14/2023 0700 THU		Date/Time To: 09/14/2023 1900 THU				
<b>4. Operations Personnel</b>						
<b>OPERATIONS CHIEF</b> DAN MARTIN		<b>SAFETY OFFICERS</b> ERIC RISDAL SHANE THEALL				
<b>BRANCH DIRECTOR</b>		<b>DIVISION/GROUP SUPERVISOR</b> NICK PETERS				
<b>5. Resources Assigned this Period</b>						
Strike Team / Task Force / Resource Designator		LWD	Leader	Number Persons	Drop Off PT./Time	Pick Up PT./Time
O-58 EMTF		09/18	SOREN CAUDILL	1	STRADER ICP/0700	STRADER ICP/1930
O-238 REAF		09/21	CHRIS MCGRATH	1	STRADER ICP/0700	STRADER ICP/1930
O-233 REAF		09/21	DANE SJODEN	1	STRADER ICP/0700	STRADER ICP/1930
O-142 REAF		09/24	BRADY DODD	1	STRADER ICP/0700	STRADER ICP/1930
O-108 REAF		09/13	CHASE BOYLARD	1	STRADER ICP/0700	STRADER ICP/1930
<b>6. Control Operations/Work Assignments:</b>						
<p><b>Task:</b> Complete and improve containment lines from the 3806 RD along the perimeter to Hipower Bluffs. Improve control lines and mop-up along the 3806 RD. Continue any remaining prep along the 300 spur road. <b>Mop up</b> and secure from th 3806 RD into the head of Hipower Creek.</p> <p><b>Purpose:</b> To prevent fire from impacting values such as nearby communities, private timberland, critical infrastructure by limiting fire spread.</p> <p><b>End State:</b> Fire is contained west of the 3806 RD and 300 RD and north of the Hipower Bluffs.</p>						
<b>7. Special Instructions:</b>						
<ul style="list-style-type: none"> <li>Utilize Chilcoot repeater. Mitigate snag hazard and implement the risk management process in tactical decisions. Support tactics that minimize impacts to private property. Avoid waterways with retardant applications and reduce impact to Salmom/Steelhead protected populations. Ensure signage is adequate to all drop points. Add signage at all major intersections to help with locating drop points.</li> <li>Resources assigned to this division should put OR-UPF-000345 Chilcoot P6QLF5 (0615) on all CTR's and shift tickets.</li> </ul>						
<b>8. Division/Group Communication Summary</b>						
Function	Channel	RX Frequency N/W	RX Tone/NAC	TX Frequency N/W	TX Tone/NAC	Mode
TACTICAL	TAC 2	168.2000	167.9	168.2000	167.9	A
COMMAND	CMD 7	169.7500	167.9	167.1000	167.9	A
COMMAND	CMD 9	173.6000	167.9	169.4625	167.9	A
AIR TO GROUND	A/G PRI	167.1500		167.1500		A
AIR TO GROUND	A/G SEC	170.2625		170.2625		A
AIR GUARD	AIR GUARD	168.6250		168.6250	110.9	A
<b>9. Prepared By (Resource Unit Leader)</b>			<b>Approved By (Planning Section Chief)</b>		<b>Date</b>	<b>Time</b>
STEPHANIE FALCON			KRISANN KOSEL		09/13/2023	2200





**Division/Group Assignment List (ICS 204 WF)**  
**Controlled Unclassified Information//Basic**

<b>1. Incident Name:</b>				<b>3.</b>		
UMPQUA FIRES				<b>Branch:</b>	<b>Division/Group</b>  <b>CHILCOOT J</b>	
<b>2. Operational Period:</b> 0700 - 1900						
Date/Time From: 09/14/2023 0700 THU		Date/Time To: 09/14/2023 1900 THU				
<b>4. Operations Personnel</b>						
<b>OPERATIONS CHIEF</b> DAN MARTIN		<b>SAFETY OFFICERS</b> ERIC RISDAL SHANE THEALL				
<b>BRANCH DIRECTOR</b> KENT CONTRERAS		<b>DIVISION/GROUP SUPERVISOR</b> DAN COTHREN				
<b>5. Resources Assigned this Period</b>						
Strike Team / Task Force / Resource Designator	LWD	Leader	Number Persons	Drop Off PT./Time	Pick Up PT./Time	
O-188 TFLD(T)	09/15	RUSSELL SHIELDS	1	STRADER ICP/0700	STRADER ICP/1930	
O-199 HEQB	09/16	RYAN MATHESON	1	STRADER ICP/0700	STRADER ICP/1930	
O-133 FMOD PACIFIC RIDGELINE	09/14	ADAM MILLER	2	STRADER ICP/0700	STRADER ICP/1930	
C-32 CRW1 IDAHO PAHNANDLE	09/14	KRESS SANDERS	23	STRADER ICP/0700	STRADER ICP/1930	
C-49 CRW1 HELENA IHC	09/26	TIGHE STOYANOFF	25	STRADER ICP/0700	STRADER ICP/1900	
C-53 CR2I WENATCHEE RIVER	09/26	BRIAN FLATTEN	18	STRADER/0700	STRADER/1900	
E-44 ENG4 HI COUNTRY	09/14	TARYN THOMAS	3	STRADER ICP/0700	STRADER ICP/1930	
E-104 ENG6 WOODPECKER	09/14	MICHELLE HERRIN	3	STRADER ICP/0700	STRADER ICP/1930	
E-189 ENG4 DIAMOND ROAD MAINTENANCE	09/23	DEAN WILSON	3	STRADER ICP/0700	STRADER ICP/1930	
E-13 WTS2 SCOTT MARSHALL	09/20	BENNEY YOKUM	1	STRADER ICP/0700	STRADER ICP/1930	
E-173 WTS2 SCOTT MARSHALL	09/21	RICHARD JOHNSON	1	STRADER ICP/0700	STRADER ICP/1930	
E-24 DZR2 TOUGH EQUIPMENT	09/25	ROBERT ASHERIN	2	STRADER ICP/0700	STRADER ICP/1900	
E-109 DZR2 JTN	09/14	JEREMY GIESBRECHT	2	STRADER ICP/0700	STRADER ICP/1930	
E-157 SKG SKIDGINE	09/18	MICHAEL SUTCH	2	STRADER ICP/0700	STRADER ICP/1930	
E-158 SKG SKIDGINE	09/18	JEREMY RUSSELL	2	STRADER ICP/0700	STRADER ICP/1930	
O-216 REMS HART (REMS 33)	09/19	CAROLINE ZINSZER	4	STRADER ICP/0700	STRADER ICP/1930	
E-175 AMBU BEST PRACTICES (AMBO 44)	09/22	DEVIN BEST	2	STRADER ICP/0700	STRADER ICP/1930	
E-142 AMB2 (MED MOD 1)	09/20	CHAARLES CARLSON	2	STRADER ICP/0700	STRADER ICP/1930	
<b>8. Division/Group Communication Summary</b>						
Function	Channel	RX Frequency N/W	RX Tone/NAC	TX Frequency N/W	TX Tone/NAC	Mode
TACTICAL	TAC 1	168.0500	167.9	168.0500	167.9	A
COMMAND	CMD 8	173.7125	167.9	162.6000	167.9	A
COMMAND	CMD 9	173.6000	167.9	169.4625	167.9	A
AIR TO GROUND	A/G PRI	167.1500		167.1500		A
AIR TO GROUND	A/G SEC	170.2625		170.2625		A
AIR GUARD	AIR GUARD	168.6250		168.6250	110.9	A
<b>9. Prepared By (Resource Unit Leader)</b>			<b>Approved By (Planning Section Chief)</b>		<b>Date</b>	<b>Time</b>
STEPHANIE FALCON			KRISANN KOSEL		09/13/2023	2200

**Division/Group Assignment List (ICS 204 WF)**  
**Controlled Unclassified Information//Basic**

<b>1. Incident Name:</b>				<b>3.</b>		
UMPQUA FIRES				<b>Branch:</b>	<b>Division/Group</b>  <b>CHILCOOT J</b>	
<b>2. Operational Period:</b> 0700 - 1900						
Date/Time From: 09/14/2023 0700 THU		Date/Time To: 09/14/2023 1900 THU				
<b>4. Operations Personnel</b>						
<b>OPERATIONS CHIEF</b> DAN MARTIN		<b>SAFETY OFFICERS</b> ERIC RISDAL SHANE THEALL				
<b>BRANCH DIRECTOR</b> KENT CONTRERAS		<b>DIVISION/GROUP SUPERVISOR</b> DAN COTHREN				
<b>5. Resources Assigned this Period</b>						
Strike Team / Task Force / Resource Designator	LWD	Leader	Number Persons	Drop Off PT./Time	Pick Up PT./Time	
O-62 EMPF	09/18	JEFFERY KAISER	1	STRADER ICP/0700	STRADER ICP/1930	
O-177 EMTF	09/16	ANASTASIA KIME	1	STRADER ICP/0700	STRADER ICP/1930	
O-234 REAF	09/24	NATALIE R MILLS	1	STRADER ICP/0700	STRADER ICP/1930	
O-157 REAF	09/13	SOPHIA KIM	1	STRADER ICP/0700	STRADER ICP/1930	
O-143 REAF (T)	09/21	MADELYN HOUSTON	1	STRADER ICP/0700	STRADER ICP/1930	
O-237 REAF (T)	09/25	ELIZABETH DAY	1	STRADER ICP/0700	STRADER ICP/1930	
E-13 UTV				STRADER ICP/0700	STRADER ICP/1930	
<b>6. Control Operations/Work Assignments:</b>						
<p><b>Task:</b> Continue to take action to secure fire from the southwest corner of Hipower Creek to the 3803 RD. Complete fireline preparation on the indirect line off the 3803 RD. Monitor conditions and continue preparation for implementing firing plan in indirect areas.</p> <p><b>Purpose:</b> To prevent fire from impacting nearby communities, private timberland, and critical infrastructure by limiting fire spread.</p> <p><b>End State:</b> Fire is contained east of the forest boundary, west of the Hipower Bluffs and north of the indirect line connected to the 3803 RD.</p>						
<b>7. Special Instructions:</b>						
<ul style="list-style-type: none"> <li>Survey and mitigate aerial hazards including live trees and snags as needed. Implementing risk management process in all tactical decisions, utilize tactics that minimize impacts to private property. Avoid waterways with retardant. Use screens to reduce impact on salmon/ steelhead protected populations.</li> <li>Ensure signage is adequate at all drop points. Add signage at all major intersections to help with locating drop zones.</li> <li>All resources assigned to this Division need to put OR-UPF 000345 P6QLF5 (0615) on all CTR's and shift tickets.</li> </ul>						
<b>8. Division/Group Communication Summary</b>						
Function	Channel	RX Frequency N/W	RX Tone/NAC	TX Frequency N/W	TX Tone/NAC	Mode
TACTICAL	TAC 1	168.0500	167.9	168.0500	167.9	A
COMMAND	CMD 8	173.7125	167.9	162.6000	167.9	A
COMMAND	CMD 9	173.6000	167.9	169.4625	167.9	A
AIR TO GROUND	A/G PRI	167.1500		167.1500		A
AIR TO GROUND	A/G SEC	170.2625		170.2625		A
AIR GUARD	AIR GUARD	168.6250		168.6250	110.9	A
<b>9. Prepared By (Resource Unit Leader)</b>			<b>Approved By (Planning Section Chief)</b>		<b>Date</b>	<b>Time</b>
STEPHANIE FALCON			KRISANN KOSEL		09/13/2023	2200

**Division/Group Assignment List (ICS 204 WF)**  
**Controlled Unclassified Information//Basic**

<b>1. Incident Name:</b>			<b>3.</b>			
UMPQUA FIRES			<b>Branch:</b>		<b>Division/Group</b>	
<b>2. Operational Period:</b> 0700 - 1900					CHILCOOT CONTINGENCY	
Date/Time From: 09/14/2023 0700 THU	Date/Time To: 09/14/2023 1900 THU					
<b>4. Operations Personnel</b>						
<b>OPERATIONS CHIEF</b> DAN MARTIN		<b>SAFETY OFFICERS</b> ERIC RISDAL SHANE THEALL				
<b>BRANCH DIRECTOR</b>		<b>DIVISION/GROUP SUPERVISOR</b> JAMES GRAHAM LOGAN DAVIS (T)				
<b>5. Resources Assigned this Period</b>						
Strike Team / Task Force / Resource Designator	LWD	Leader	Number Persons	Drop Off PT./Time	Pick Up PT./Time	
O-90 SOFR	09/14	MIKE GOYETTE	1	STRADER ICP/0700	STRADER ICP/1930	
C-50 CRW2 GFP ENTERPRISES C-6	09/25	JESSE SZABO	20	STRADER ICP/0700	STRADER ICP/1930	
C-51 CRW2 J.C.OROZCO REFORESTATION C-1	09/24	CHRIS OROZCO	20	STRADER ICP/0700	STRADER ICP/1930	
E-137 WTS2 WTS2 - ON THE GO H2O	09/14	MAY MAYAK	2	STRADER ICP/0700	STRADER ICP/1930	
E-138 WTS2 WTS2 - COWBOY FIRE	09/14	CHRIS ANDERSON	2	STRADER ICP/0700	STRADER ICP/1930	
E-114 EXCA MARSHALL	09/18	OWEN GAUGE	2	STRADER ICP/0700	STRADER ICP/1930	
E-10016 CHIP IRA TORRES	09/14	ADAN CHAVEZ	3	STRADER ICP/0700	STRADER ICP/1930	
E-10017 CHP2 IRA TORRES	09/14	VICTOR URBIETA	2	STRADER ICP/0700	STRADER ICP/1930	
E-6 GRD1 MARK JONES TRUCKING	09/14	MARK JONES	2	STRADER ICP/0700	STRADER ICP/1930	
E-12 VROL MARK JONES TRUCKING	09/19	JUSTIN MURPHY	1	STRADER ICP/0700	STRADER ICP/1930	
O-108 REAF	09/13	CHASE BOLYARD	1	STRADER ICP/0700	STRADER ICP/1930	
O-233 REAF	09/21	DANE SJODEN	1	STRADER ICP/0700	STRADER ICP/1930	
O-234 REAF	09/24	NATALIE MILLS	1	STRADER ICP/0700	STRADER ICP/1930	
O-237 REAF	09/25	LIZ DAY	1	STRADER ICP/0700	STRADER ICP/1930	
<b>8. Division/Group Communication Summary</b>						
Function	Channel	RX Frequency N/W	RX Tone/NAC	TX Frequency N/W	TX Tone/NAC	Mode
TACTICAL	TAC 4	166.7250	167.9	166.7250	167.9	A
COMMAND	CMD 10	169.8375	167.9	162.4625	167.9	A
AIR TO GROUND	A/G PRI	167.1500		167.1500		A
AIR TO GROUND	A/G SEC	170.2625		170.2625		A
AIR GUARD	AIR GUARD	168.6250		168.6250	110.9	A
<b>9. Prepared By (Resource Unit Leader)</b>		<b>Approved By (Planning Section Chief)</b>		<b>Date</b>		<b>Time</b>
STEPHANIE FALCON		KRISANN KOSEL		09/13/2023		2200





**Division/Group Assignment List (ICS 204 WF)**  
**Controlled Unclassified Information//Basic**

<b>1. Incident Name:</b>			<b>3.</b>			
UMPQUA FIRES			<b>Branch:</b>		<b>Division/Group</b>	
<b>2. Operational Period:</b> 0700 - 1900					RIDGE W	
Date/Time From: 09/14/2023 0700 THU		Date/Time To: 09/14/2023 1900 THU				
<b>4. Operations Personnel</b>						
<b>OPERATIONS CHIEF</b> DAN MARTIN		<b>SAFETY OFFICERS</b> ERIC RISDAL SHANE THEALL				
<b>BRANCH DIRECTOR</b>		<b>DIVISION/GROUP SUPERVISOR</b> SHILOW NORTON				
<b>5. Resources Assigned this Period</b>						
Strike Team / Task Force / Resource Designator		LWD	Leader	Number Persons	Drop Off PT./Time	Pick Up PT./Time
O-187 WFM METOLIUS		09/14	NEAL FAIR	9	STRADER ICP/0700	STRADER ICP/1930
E-4 ENG4 TORRES		09/17	HARLEY MEAD	3	STRADER ICP/0700	STRADER ICP/1930
E-186 ENG6 - PHENIX FORESTRY		09/24	SUZANNE FLYNN	3	STRADER ICP/0700	STRADER ICP/1930
O-73 REMS ROUGH COUNTRY (REMS 22)		09/19	ANDREW PADDISON	4	STRADER ICP/0700	STRADER ICP/1930
O-63 EMPF		09/19	TOM GIBSON	1	STRADER ICP/0700	STRADER ICP/1930
O-108 REAF		09/13	CHASE BOLYARD	1	STRADER ICP/0700	STRADER ICP/1930
<b>6. Control Operations/Work Assignments:</b>						
<p><b>Task:</b> Complete line on north part of Ridge Fire. Look for opportunities to secure fire edge in the northeast corner of fire below 5851 RD. Begin repair on 5851 RD. Continue mop-up and securing line on the remainder of the fire.</p> <p><b>Purpose:</b> Prevent impact to nearby values by limiting fire spread towards Fuller Lake, the Willamette NF and Boulder Creek Wilderness.</p> <p><b>End State:</b> Fire is contained east of Fuller Lake, North of the 3810 RD and west of the 5851 Rd.</p>						
<b>7. Special Instructions:</b>						
<ul style="list-style-type: none"> <li>Mitigate aerial hazards, both standing live and snag trees. Survey work areas and implement the risk management process in all tactical decisions. Support tactics that minimize impacts to private timber property. Avoid waterways with retardant applications and use screens to reduce the impact to Salmon/ Steelhead protected populations.</li> <li>Ensure signage is adequate at all drop points. Add signage at all major intersections to help with locating drop points.</li> <li>All resources assigned to this division will put OR-UPF-000346 P6QLFA (0615) on the bottom of CTR's and shift tickets.</li> </ul>						
<b>8. Division/Group Communication Summary</b>						
Function	Channel	RX Frequency N/W	RX Tone/NAC	TX Frequency N/W	TX Tone/NAC	Mode
TACTICAL	TAC 5	166.7750	167.9	166.7750	167.9	A
COMMAND	CMD 8	173.7125	167.9	162.6000	167.9	A
AIR TO GROUND	A/G PRI	167.1500		167.1500		A
AIR TO GROUND	A/G SEC	170.2625		170.2625		A
AIR GUARD	AIR GUARD	168.6250		168.6250	110.9	A
<b>9. Prepared By (Resource Unit Leader)</b>			<b>Approved By (Planning Section Chief)</b>		<b>Date</b>	<b>Time</b>
STEPHANIE FALCON			KRISANN KOSEL		09/13/2023	2200

# Disease Prevention

## Take everyday preventive actions to stop the spread of germs.

- Take everyday preventive actions that are recommended to reduce the spread of flu, camp crud, and Covid.
  - Avoid close contact with people who are sick.
  - If you are sick, limit contact with others as much as possible to keep from infecting them.
- **Cover coughs and sneezes.**
  - Cover your nose and mouth with a tissue when you cough or sneeze. Throw the tissue in the trash after you use it.
  - Cough into your sleeve or jacket.
- **Wash your hands** often with soap and water. If soap and water are not available, use an alcohol-based hand rub.
- Avoid touching your eyes, nose, and mouth. Germs spread this way.
- Clean and disinfect surfaces and objects that may be contaminated.
- CDC recommends that people stay home for at least 24 hours after their fever is gone except to get medical care or other necessities. Fever should be gone without the need to use a fever-reducing medicine.

For more information please go to:

<https://www.cdc.gov/flu/prevent/prevention.htm>

# MEDICAL PLAN (ICS 206 WF)

Controlled unclassified Information Basic

1. Incident/Project Name			2. Operational Period				
Umpqua Fires (Dinner, Brice Creek & Grizzly Fires)			Date/Time		9/14/2023, 0600-2200		
3. Ambulance Services							
Name	Complete Address	Phone & EMS Frequency	Advanced Life Support				
			Yes	No			
South Lane Fire & Rescue	233 E. Harrison Ave, Cottage Grove, OR	Command Channel/911(Backup)	X				
4. Air Ambulance Services							
Name	Phone	Type of Aircraft and Capability					
Commercial Air Ambulance	911 / 541-344-2211	Closest available based on availability					
Teton, N38HX	Command	Short Haul, Day time use only					
5. Hospitals							
Name Address	GPS Datum – WGS 84	Travel Time		Phone	Helipad		Level of Care
		Air	Gnd		Yes	No	
Sacred Heart MC Riverbend 3333 Riverbend Dr. Springfield, OR 97477	Lat: N 44° 04.876' Long: W 123° 01.588' VHF:	30 min	1 hr	(541) 222-1581	X		Level II Trauma
PeaceHealth Cottage Grove Community MC 1515 Village Dr Cottage Grove, OR	Lat: N 43° 48.2292' Long: W 123° 2.3801' VHF:	15 min	30 Min	(541) 726-4580	X		Level 3 Trauma
McKenzie-Willamette MC 1460 G St Springfield, OR 97477	Lat: N 44° 03.217' Long: W 123° 00.219' VHF:	30 min	1 hr	(541) 726-4580	X		Non Trauma
Legacy Emanuel 2801 N Gantenbein Ave Portland OR 97227	Lat: N 45°32.66' Long: W 122° 40.18' VHF:	1 hr	2 hr 30 min	(503) 413-2285	X		Level I/ Burn Center
6. Branch/Div/Group		Area Location Capability					
Grizzly Fire DIV S/Z	REMS 1 - Decker Ambo 3 - Camp						
Brice Creek Fire DIV A	REMS 2 - Murphy						
Brice Creek Fire DIV C	Ambo 4 - Lyman						
Dinner Fire DIV D	Ambo 5 - Evans						
Sharps Creek Base Camp	MEDL Angela Cisneros - Thorsvold MEDL(t) Christy Field						
8. Prepared By (Medical Unit Leader)		9. Date/Time	10. Reviewed By (Safety Officer)			11. Date/Time	
Paul Smith, MEDLT		9/14/2023	Eric Risda <small>Digitally signed by ERIC RISDAL Date: 2023.09.13 19:42:35 -0700</small>				

# MEDICAL PLAN (ICS 206 WF)

Controlled unclassified Information Basic

1. Incident/Project Name		2. Operational Period						
UMPQUA FIRES (Chilcoot Fire & Ridge Fire)		Date/Time	9/14/2023 0600-2200					
3. Ambulance Services								
Name	Complete Address	Radio Frequency & Phone	Advanced Life Support					
			Yes	No				
Umpqua Valley Ambulance	1290 NE Cedar St. Roseburg OR	Command Channel/911 (backup)	X					
4. Air Ambulance Services								
Name	Phone	Type of Aircraft and Capability						
Commercial Air Ambulance	Command /911(backup)	Closest available ship based on availability						
Teton N38HX	Command Channel	Short Haul Capable (Walterville OR)						
Yellowstone N234BH	Command Channel	Short Haul Capable (Grants Pass OR)						
5. Hospitals								
Name Address	GPS Datum – WGS 84		Travel Time		Phone	Helipad		Level of Care
			Air	Gnd		Yes	No	
Mercy Medical Center 2700 NW Stewart Pkwy Roseburg, OR	<b>Lat:</b> N 43° 14.567'	<b>Long:</b> W 123° 21.983'	30 min	1 hr	(541) 673-0611	X		Level III Trauma
	<b>VHF:</b>							
Legacy Emanuel 2801 N Gantenbein Ave Portland OR 97227	<b>Lat:</b> N 45°32.66'	<b>Long:</b> W 122° 40.18'	2 hr	4 hr	(503) 413-2285	X		Level I/ Burn Center
	<b>VHF:</b>							
6. Branch/Div/Group	Area Location Capability							
<b>DIV J (Chilcoot)</b>	Med. Mod 1 - Carlson, Ambo 44 - Best, REMS 33 - Zinzser EMPF Kaiser, EMTF Kime							
<b>DIV E (Chilcoot)</b>	REMS 11 - Banex, Ambo 22 - Cribb EMTF Caudill, EMPF Dobson							
<b>DIV H (Chilcoot)</b>	EMPF Gifford EMTF Welch, EMTF Martinez							
<b>DIV W (Ridge)</b>	REMS 22 - Paddison EMPF Gibson							
<b>Contingency Group</b>	Use Nearby Resources							
<b>Chilcoot ICP</b>	MESU Cardinal Medical - Julie Sargent (In-Camp Treatment) MEDL Laura Belino, MEDL John Nokes (509) 680-1339 MEDL(t) Paul Smith							
8. Prepared By (Medical Unit Leader)	9. Date/Time	10. Reviewed By (Safety Officer)		11. Date/Time				
Paul Smith , MEDLT	9/13/2023	Eric Risdal ERIC RISDAL		9/13/2023				

Digitally signed by ER  
RISDAL  
Date: 2023.09.13  
19:41:34 -0700

# IWI Procedures

## **Fire Line**

1. Request closest EMT/Medic to the injured person and report to DIV Supervisor.
2. Contact **Chilcoot Communications** and declare a “Red medical” (critical), “Yellow medical” (serious), or “Green medical” (minor). Request emergency radio traffic if needed.
3. Give location of patient and best access for initial responders.
4. Describe injury(s): Are they bleeding? How much? Are they conscious? Can they talk? Do they know what’s going on? How many people are hurt.
5. Gather information for MIR and relay to dispatch as soon as practical (see MIR back page)

## **Sharps Basecamp**

1. Life threatening emergency, call 911
2. Call Chilcoot Communications on Command 7 or 8 or 949-648-1591
3. Contact (go to) the medical tent.
4. Call the medical tent 310-780-4296

## **Strader ICP**

1. Life threatening emergency, call 911
2. Call Chilcoot Communications on Command or 949-648-1591
3. Non-life-threatening go to blue medical trailer located between lunch trailer and laundry trailer



# MEDICAL PLAN (ICS 206 WF)

Controlled Unclassified Information//Basic

## Medical Incident Report

**FOR A NON-EMERGENCY INCIDENT, WORK THROUGH CHAIN OF COMMAND TO REPORT AND TRANSPORT INJURED PERSONNEL AS NECESSARY.**

**FOR A MEDICAL EMERGENCY: IDENTIFY ON SCENE INCIDENT COMMANDER BY NAME AND POSITION AND ANNOUNCE "MEDICAL EMERGENCY" TO INITIATE RESPONSE FROM IMT COMMUNICATIONS/DISPATCH.**

Use the following items to communicate situation to communications/dispatch.

**1. CONTACT COMMUNICATIONS / DISPATCH (Verify correct frequency prior to starting report)**

*Ex: "Communications, Div. Alpha. Stand-by for Emergency Traffic."*

**2. INCIDENT STATUS: Provide incident summary (including number of patients) and command structure.**

*Ex: "Communications, I have a Red priority patient, unconscious, struck by a falling tree. Requesting air ambulance to Forest Road 1 at (Lat./Long.) This will be the Trout Meadow Medical, IC is TFLD Jones. EMT Smith is providing medical care."*

Severity of Emergency / Transport Priority	<input type="checkbox"/> RED / PRIORITY 1 Life or limb threatening injury or illness. Evacuation need is IMMEDIATE <i>Ex: Unconscious, difficulty breathing, bleeding severely, 2° – 3° burns more than 4 palm sizes, heat stroke, disoriented.</i> <input type="checkbox"/> YELLOW / PRIORITY 2 Serious Injury or illness. Evacuation may be DELAYED if necessary. <i>Ex: Significant trauma, unable to walk, 2° – 3° burns not more than 1-3 palm sizes.</i> <input type="checkbox"/> GREEN / PRIORITY 3 Minor Injury or illness. Non-Emergency transport <i>Ex: Sprains, strains, minor heat-related illness.</i>	
Nature of Injury or Illness & Mechanism of Injury		<i>Brief Summary of Injury or Illness (Ex: Unconscious, Struck by Falling Tree)</i>
Transport Request		<i>Air Ambulance / Short Haul/Hoist Ground Ambulance / Other</i>
Patient Location		<i>Descriptive Location &amp; Lat. / Long. (WGS84)</i>
Incident Name		<i>Geographic Name + "Medical" (Ex: Trout Meadow Medical)</i>
On-Scene Incident Commander		<i>Name of on-scene IC of Incident within an Incident (Ex: TFLD Jones)</i>
Patient Care		<i>Name of Care Provider (Ex: EMT Smith)</i>

**3. INITIAL PATIENT ASSESSMENT: Complete this section for each patient as applicable (start with the most severe patient)**

Patient Assessment: See IRPG page 106

Treatment:

**4. TRANSPORT PLAN:**

Evacuation Location (if different): (Descriptive Location (drop point, intersection, etc.) or Lat. / Long.) Patient's ETA to Evacuation Location:

Helispot / Extraction Site Size and Hazards:

**5. ADDITIONAL RESOURCES / EQUIPMENT NEEDS:**

*Example: Paramedic/EMT, Crews, Immobilization Devices, AED, Oxygen, Trauma Bag, IV/Fluid(s), Splints, Rope rescue, Wheeled litter, HAZMAT, Extrication*

**6. COMMUNICATIONS: Identify State Air/Ground EMS Frequencies and Hospital Contacts as applicable**

Function	Channel Name/Number	Receive (RX)	Tone/NAC *	Transmit (TX)	Tone/NAC *
COMMAND					
AIR-TO-GRND					
TACTICAL					

**7. CONTINGENCY: Considerations: If primary options fail, what actions can be implemented in conjunction with primary evacuation method? Be thinking ahead.**

**8. ADDITIONAL INFORMATION: Updates/Changes, etc.**

**REMEMBER:** Confirm ETA's of resources ordered. Act according to your level of training. Be Alert. Keep Calm. Think Clearly. Act Decisively.