

# INCIDENT ACTION PLAN

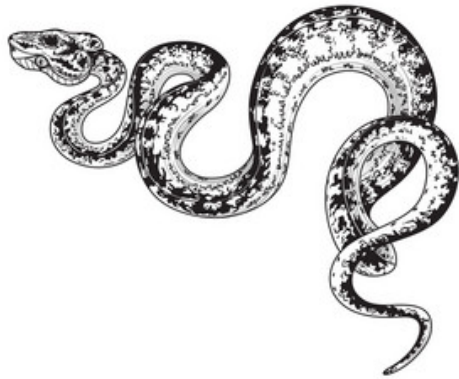
GRIZZLY

DINNER

BRICE CREEK

CHILCOOT

RIDGE



Grizzly

OR-UPF-000341  
P6 QLOW (0615)

Dinner

OR-UPF-000357  
P6 QLJ7 (0615)

Brice Creek

OR-UPF-000359  
P6 QLJ4 (0615)

Chilcoot

OR-UPF-000345  
P6 QLF5 (0615)  
221-ICU (DNR)

Ridge

OR-UPF-000346  
P6 QLF4 (0615)

NOTES:




Donate 1-hour of OT – Wildland Firefighter Foundation

## SEPTEMBER 15, 2023

### Operational Period 0700 - 1900

CREW SWAPS



MAPS


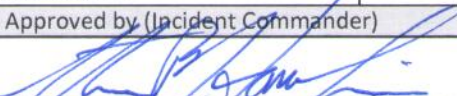
IAP

CHECK-IN





### Incident Objectives (ICS 202)

1. Incident Name		2. Date Prepared		3. Time Prepared	
<b>Umpqua Fires</b>		9/14/2023		2000	
4. Operational Period (Date and Time)					
From:	9/15/2023	at	700	To:	9/15/2023 at 1900
5. Strategic Framework and Leaders Intent					
Strategic Framework:					
Implement suppression strategies that minimize impacts to identified values at risk, and that ensures firefighter and public safety are the top priority					
Specifically manage risk to firefighters by ensuring hazards are identified, assessed, and where possible mitigated. Be prepared to accept residual risk when exposure is commensurate with values threatened and the probability of achieving objectives is high.					
Leaders Intent:					
Engage in all work assignments with a high degree of professionalism and provide excellent customer service to all parties involved with the incident. All assigned personnel should:					
* Exhibit professional behavior					
* Ensure effective communication					
* Manage personal safety and the safety of others					
* Conduct effective fatigue management and implement work/rest cycles					
6. Management Objectives and Requirements					
Implement operational plans that establish holding features across the entire perimeter of each fire resulting in minimized duration and physical extent of each, and maximizing the protection of:					
* Highway 138 corridor					
* Private timber lands					
* Bohemia Mining District, Fairview Comm Site, Chilcoot Repeater, and other infrastructure					
* Active USFS timber sales					
* Natural and cultural resources					
Coordinate all fire suppression and repair work with Resource Advisors to protect natural and cultural values.					
Maintain effective relationships by ensuring timely information between the IMT, affected agencies, and the public.					
7. Operational Period Command Emphasis					
We met or exceeded the forecast weather yesterday with even hotter and drier conditions predicted today. Thankfully the winds should stay moderate and play less of a factor in potential fire behavior. Regardless, conditions will be conducive to fire growth. Consider how fuels have changed since the last small amount of rain 9/4-9/5. Areas that have seemed cool may suddenly begin smoking or actively burning.					
8. Attachments (check if attached)					
X	Organization List (ICS 203)	X	Medical Plan (ICS 206)	X	Fire Behavior
X	Assignment List (ICS 204)	X	Safety Message		
X	Communications Plan (ICS 205)	X	General Forecast		
9. Prepared by (Planning Section Chief)			10. Approved by (Incident Commander)		
					

## ORGANIZATION ASSIGNMENT LIST (ICS 203)

NORTHWEST TEAM 6			7. Operations Section		
<b>1. Incident Name</b>			<b>Operations</b>		DAN MARTIN
GRIZZLY / DINNER / BRICE CREEK / CHILCOOT / RIDGE FIRES			<b>Field Operations</b>		JESS BOHNSACK / JOE PARR (T)
<b>2. Date</b>	<b>Time</b>		<b>Planning Operations</b>		TRISH WALLACE / STEVE YOUNG (T)
9/14/2023	2000		<b>Planning Operations</b>		TIM NUTLEY / JAMES GRAHAM (T)
<b>2a. Operational Period</b>			<b>Strategic Operations</b>		
From: 9/15/2023 0700 To: 9/01/2023 1900					
<b>3. Incident Commander(s) and Staff</b>					
<b>Incident Commander</b>	TYSON ALBRECHT				
<b>Deputy</b>	ADAM VEALE / KEN PAUL		DIVISION	BRICE CREEK	A/C DOUG CATES
<b>Safety Officer</b>	ERIC RISDAL / SHANE THEALL		DIVISION	DINNER	D LOGAN LAWSON
<b>Safety Officer</b>	AL AUGUSTINE		DIVISION	GRIZZLY	S/Z RORY HIETT
<b>Medical Unit</b>	JOHN NOKES / CHRISTY FIELD (T)		DIVISION	CHILCOOT	E NICK PETERS
<b>Medical Unit</b>	LAURA BELINO / PAUL SMITH (T)		DIVISION	CHILCOOT	H JON MILES / JOHN ASHCRAFT (T)
<b>Information Officer</b>	JODIE BARRAM / JESSICA REED (T)		DIVISION	CHILCOOT	J DAN COTHREN
<b>Information Officer</b>	NANCY JONES / JOE ANDERSON		DIVISION	RIDGE	W SHILOU NORTON
<b>Liaison Officer</b>	KIM TITUS / GARRIT CRAIG		DIVISION		
<b>Human Resources</b>	AUDREY MATSUMONJI / K.C. BRIGGS (T)				
<b>Branch Director</b>					
DIVISION					
<b>4. Agency/Organization Representative</b>					
UMPQUA NATIONAL FOREST	DAVID ANDERSEN / JACK LEWIS / BETH CHRISTIANSEN		DIVISION		
UMPQUA NATIONAL FOREST	CAROM VADALA (T) / MARK SOMMER (T)		<b>BRANCH</b>		
WILLAMETTE NF	MOLLY JUILLERAT		<b>Branch Director</b>		
BLM - EUGENE	DENNIS TEITZEL		DIVISION		
BLM - ROSEBURG	HEATHER WHITMAN		DIVISION		
ODF	CHRIS CLINE / JOHN FLANNIGAN		DIVISION		
DFPA	LINK SMITH		<b>Branch Director</b>		
LEAD READ	JED HANCOCK		GROUP		
USFS - SW IARR	MANUEL MARTINEZ		GROUP		
<b>5. Planning Section</b>			GROUP		
<b>Chief</b>	KRISANN KOSEL		GROUP		
<b>Deputy</b>	SUE PUDDY / JOHN NONENAM		GROUP		
<b>Resource Unit</b>	STEPHANIE FALCON / JAMES MAHAFFY (T)				
<b>Situation Unit</b>	KENT ELLETT / DAMIEN HAWLEY-JONES (T)		GROUP		
<b>Status Check-in</b>	AMY BURT (T) / DIANA HECKATHORN (T)		DIVISION		
<b>GISS</b>	EMILY RUSH / ROBIN BIGGS (T)		GROUP		
<b>Fire Behavior</b>	SARAH BUSH				
<b>Meteorologist</b>	STEVE BODNAR				
<b>DMOB</b>	MIKE HESTON (V)				
<b>DOCL</b>	DEDRIE SMITH (V)				
<b>FOBS</b>					
<b>7b. Air Operations Branch</b>					
			<b>Air Operations Director</b>		DOUG LEDGERWOOD
			<b>Air Support Supervisor</b>		KEVIN KOZAK
			<b>Air Attack Supervisor</b>		
<b>6. Logistics Section</b>					
<b>Chief</b>	JOE NEER / CINDY WEDEKIND / PAUL FOOTEN (T)		Helicopter Coordinator		
<b>Facilities Unit</b>					
<b>Supply Unit</b>	JON BYERLY				
			<b>8. Finance/Administration Section</b>		
<b>Ground Support Unit</b>	TODD GRIFFIN / BRANDON SIEDERS / MIGUEL MACIAS (T)		<b>Chief</b>		JEN KNUTSON / KEL'S MARTINEZ
<b>Communications Unit</b>	TROY MCMILLIAN		<b>Chief</b>		JANET MACDONALD (T) / PAM ARBOGAST (T)
<b>ITSS</b>	MATT MATSON / JAMES BROWN		<b>Time Unit</b>		KRISSY MITCHELL / KEVIN GU (T)
<b>Food Unit</b>	MIKE SPATZ / JOE DEPAOLA (T)		<b>Equipment Time</b>		PEGGY ROBERTS / SABRINA BLASINGAME
<b>Food Unit</b>	REE ELLA VONBORSTEL		<b>Equipment Time</b>		JUSTIN KRIEG (T)
<b>Security Unit</b>	RONNIE OROPEZA		<b>Personnel Time</b>		KATHY HOTTLE / NANCY SHADOMY
<b>Ordering Manager</b>	DONNA DIXON / NOE REYES / MICHAEL SMITH (T)		<b>Personnel Time</b>		DARCI DRINKWATER (T) / JOSEPH TOTTEN (T)
<b>Receiving &amp; Distribution</b>	KARLIS LAZDA / ED JENSEN		<b>Comp/Claims Unit</b>		DIANNA PRIOR
<b>Base Camp Manager</b>	MATT AXE (T) / BEN WALKER (T)		<b>Cost Unit</b>		ANTHONY JOHNS
			<b>ICPI</b>		LEO ROBB
<b>9. Prepared by:</b>	JAMES MAHAFFY	<b>Date:</b> 9/13/2023	<b>Signature:</b>		Sue Puddy, PSC2



# Fire Weather Forecast



**FORECAST NO:** 16  
**FORECAST FOR:** Friday Day Shift  
**SHIFT DATE:** 09/15/2023  
**DATE AND TIME ISSUED:** 09/14/2023 at 2000

**NAME OF FIRE:** Umpqua Fires  
**UNIT:** OR-UPF  
**SIGNED:** Steve Bodnar - Incident Meteorologist  
 405-203-9850 (cell) / stephen.bodnar@noaa.gov

**WEATHER DISCUSSION:** Today will be the warmest and driest day of the week. Similar to Thursday, be cautious of sharp increases in temperatures and drops in RH as inversions mix out between 0900-1100 hours. Winds will continue to follow diurnal trends with an easterly component early morning then west to northwest roughly after 1300. Ridgetop winds will pick up slightly this afternoon compared to Thursday with the higher peaks experiencing winds closer to 10 mph. A subtle cooling and moistening trend arrive over the weekend.

## FRIDAY:

**WEATHER:** Sunny. Very warm and dry.

	Max Temperatures	Minimum Relative Humidity
<b>Valleys</b> (2500-3500 ft)	89-95° (Up 1-3)	9-18% (Down 1-3%)
<b>Ridges</b> (3500-4500 ft)	84-88° (Up 1-2) **	14-20% (Down 2-4%) **

\*\*Sheltered Valleys on north aspects will experience temps/RH similar to ridge forecast.

## **20-FOOT WINDS:**

**Valleys and Slopes:** Upslope/upvalley 3 to 7 mph. Slopes and valleys aligned with northwest general winds, speeds increasing 5 to 9 mph gusts to 15 mph after 1300 for north fires and 1500 south fires.

**Ridgetops:** East/southeast 5 to 8 mph gusts to 15 mph becoming northwest 6-10 mph gusts up to 18 after 1300.

**AVIATION:** No aviation concerns.

**CWR (≥ 0.25"):** 0%      **LAL:** 1      **HAINES:** 5      **INVERSION BREAK/MH:** 1100 hrs/ 7000 ft  
**CAMP FORECAST:**      **Strader ICP:** 94F      **Sharps Creek Base Camp:** 91F

## FRIDAY NIGHT:

**WEATHER:** Clear skies with poor overnight recoveries.

	Min Temperatures - trend	Maximum Relative Humidity - trend
<b>Valleys</b> (2500-3500 ft)	55-60° - no change	50-60% - slightly drier
<b>Ridges</b> (3500-4500 ft)	60-65° - no change	30-40% - no change

## **20-FOOT WINDS:**

Valleys and Slopes: Downslope/drainage 1 to 4 mph.

Ridgetops: East/southeast 4 to 7 mph.

**CWR (≥ 0.25"):** 0%      **LAL:** 1      **INVERSIONS:** Very shallow inversions overnight setting after 2100  
**CAMP FORECAST:**      **Strader ICP:** 56F      **Sharps Creek Base Camp:** 55F

**EXTENDED OUTLOOK:** A weak trough swings through Monday bringing onshore flow but no precipitation. This will cool things off and moisten humidity levels through Wednesday. A transition back to offshore flow is possible Thursday promoting the next warming and drying trend. Details carry low confidence at this time.

**PLEASE submit weather observations to the IMET - \*\*Snap a picture of observations and text to # above\*\***

# FIRE BEHAVIOR FORECAST

<b>FORECAST NUMBER:</b> 16	<b>TYPE OF FIRE:</b> Wildfire
<b>FIRE NAME:</b> Umpqua Fires	<b>OPERATIONAL PERIOD:</b> 0700-1900, Friday September 15, 2023
<b>DATE ISSUED:</b> Thursday September 14, 2023	<b>TIME ISSUED:</b> 19:30 Hours
<b>UNIT:</b> Umpqua National Forest	<b>SIGNED:</b> Sarah Bush – FBAN

## INPUTS

**WEATHER SUMMARY:** See Fire Weather Forecast for Details

### FUELS:

Fuels in the fire area are primarily composed of *Timber Litter*, and *Timber Understory with moss/lichen present in most stands*. Mature conifer stands with western hemlock and Douglas fir present, generally have heavy surface fuel loading. 30 to 50+ year old second growth conifer stands contain needle litter and some down woody debris. Brush and reproduction present in areas with less dense canopies.

Dinner, Brice, Grizzly- Forecast -ERC 90<sup>th</sup> percentile. Yesterday's obs. **1hr-6%, 10hr-10%**, 100hr-16%, 1000hr-18%  
Chilcoot & Ridge- Forecast -ERC 94<sup>th</sup> percentile. Yesterday's obs. **1hr-8%, 10hr-14%, 100hr-15%**, 1000hr-17%

## OUTPUTS

### FIRE BEHAVIOR GENERAL:

The combination of low humidities during the day and poor overnight recoveries extend the burn period for areas that with active fire. The hot and dry conditions continue over the fire areas. The 1000-hr fuels are slowly losing moisture due to these conditions, making them more available to consume. Expect lichen to be completely available to burn in mature stands of timber with potential for torching, due to RH less than 30%.

### Past Experience:

Watch Out: When dry fuels combine with any of the following: Haines 5 or 6, alignment of wind and slope, or poor RH recovery.

Substantial holding concerns may result from lichen found on tree bark in timber stands. Note that fires often have limited fire behavior for multiple days before conditions cause rapid growth.

One and 10-hr fuels will be more available to burn due to drying. Creeping and smoldering in surface fuels will be the most common fire behavior in areas with active burning.

### FIRE BEHAVIOR SPECIFIC:

#### Dinner, Brice, Grizzly, Chilcoot, and Ridge

Smoldering and creeping with isolated torching will be the main types of fire today. **Chilcoot fire (Div J)** can expect less than 4' flame lengths and less than 6 ch/hr ROS where there is active fire. Fire spread potential will be largely dependent on location, aspect, and exposure/sheltering. One and 10-hr fuels on southern aspects will be significantly more available to carry fire in the peak of the day although at moderated ROS due to low wind speeds. Expect another day with an uptick in fire behavior on **Brice (Div A)**.

**Ridge (Div W) and Dinner (Div D)** fires should experience minimal fire behavior and isolated to interior portions of the fire today. Expect minimal amounts of creeping and smoke on **Grizzly (Div S/Z)** due to suppression actions that are occurring. The area would exhibit up to 6'FL and 6 ch/hr ROS without suppression actions.

**Spotting distance up to 0.2 mi, Probability of Ignition- 60% shaded; 90% unshaded**

**Initial Attack:** In the event resources respond to a new start, recognize that fuels, topography, and conditions may be different than areas you have previously worked in.

**AIR OPERATIONS:** Warm and dry today. No concerns.

## SAFETY

"Smoldering" fire behavior hazards include ....threats to your feet, hands, airways, knees, shins, and eyes that will continue to be challenged by smoke, ash, slippery dirt (mud), sharp things, pokey stuff, steam.....be kind to your feet – they need to last to the end of the season.

<b>AIR OPERATIONS SUMMARY 220</b>	Prepared/Approved: Doug Ledgerwood	Prepared Time: 1800 hrs.
<b>1. INCIDENT NAME: UMPQUA FIRES</b>	<b>2. OPERATIONAL PERIOD</b> 09/15/2023	<b>START TIME:</b> 0700
		<b>END TIME:</b> 1900
		<b>SUNRISE:</b> 0652
		<b>SUNSET:</b> 1922

**3. REMARKS** (Safety Notes, Hazards, Air Operations Special Equipment, etc.).  
**Smoky conditions \* Steep terrain \* Shadow effects**  
**Only use approved dip sites. Do not cross contaminate water sources without sanitizing bucket/snorkel. All GPS data to be collected in DEGREES MINUTES, DECIMAL MINUTES.**  
 Avoid foam within 300' of waterways or bodies of water. Notify AOBD if this is not achieved  
 Aircraft costs daily to: [2023.chilcoot.finance@firenet.gov](mailto:2023.chilcoot.finance@firenet.gov) and cc to [2023.chilcoot.airops@firenet.gov](mailto:2023.chilcoot.airops@firenet.gov)

**4. READY ALERT AIRCRAFT:**  
**N234BH Yellowstone Short Haul:**  
 @Grants Pass.  
**N38HX Teton Short Haul @**  
 Walterville.

**5.TFR: #3/9930 (A30) North**  
 Freq 121.3750  
 Surface to 9000ft MSL  
 Operational 1500-0400 UTC  
**TFR: #3/7750 (A51) South**  
 Freq:132.525  
 Surface to 8500 MSL  
 Operational 1630-0400 UTC

6. PERSONNEL	NAME	PHONE #
Glide Helibase		
AOBD	Doug Ledgerwood	541-852-0633
ASGS	Kevin Kozak	360-280-6714
HEBM	Matt Quezada	760-379-6995
HEBM(t)	Mario Melendez	661-912-8235
ORRIC	Aircraft Desk	541-957-3325
UAO	Jim Dotson	307-413-2024
For IA: send flight strip to <a href="mailto:matt.quezada@usda.gov">matt.quezada@usda.gov</a> HEBM(t) <a href="mailto:Mario.melendez@usda.gov">Mario.melendez@usda.gov</a>		

7. FREQUENCIES	AM	FM
A/A TFR and Primary North	121.3750	
A/G Primary (A4) North		165.9875
A/G Secondary (A5) North		173.5000
A/A TFR and Primary South	132.525	
A/G Primary (A6) South		167.1500
A/G Secondary (A-7) South		170.2625
Deck Tone-156.7(TX/RX)		163.1000
IA A/G 49 USFS		168.0375
IA A/G 81 USFS		166.9500
VMED29 Tone 156.7(TX/RX)		155.3475
CTAF		122.8
Air Guard Tone 110.9 (TX)		168.6250

8. FIXED-WING Avail/ Type/ Make-Model/ N#/ Base
<b>AIRTANKERS: ORDER THRU ATGS</b>
<b>ATGS – order through Roseburg Dispatch</b>
<b>Landing Sites on Fire: See pilot map</b> Layng Cr Helispot: 43°42.698'N X 122°42.114'W 1224ft Cottage Grove S61: 43°48.246'N X 123°1.923'W 641ft  Glide Helibase 43° 18.922' X 123° 4.415'
<b>Tank Dips: See Pilot Map</b>
<b>LAKE DIPS:</b> Gertrude LK 43°35.698'N X 122°32.452'W 3990 ft Crawfish Lk 43°37.502'N X 122°42.222'W 4794 ft Crystal Lk 43°35.602 N X 122°38.655 W 4650 ft Elephant Lake 43°35.742 X 122°39.237 W 5126 ft

FAA N#	T Y	MAKE/ MODEL	BASE	START	AVAIL	REMARKS	FAA N#	T Y	MAKE/ MODEL	BASE	START	AVAIL	REMARKS
N274TH (A-9)	1	UH-60	Glide	0700	0800								
526MW (A-10)	1	KMAX	Glide	0700	0800								
N933CH(A-39)	2	Bell 205 A1	Glide	0700	0800	15 personnel							
H377PA(A-20)	2	Bell 212	Glide	0700	0800	8 personnel	NR474A	3	UR-31(A-26)	Glide	0700		Ryan Gregg Mngr: 360-852-2296
32HX (A-19)	3	AS 350	Glide	0700	0800	11 personnel							

# HEALTH AND SAFETY MESSAGE

Every Firefighter on the fireline deserves a Safety Briefing EVERY DAY.

Incident: Chilcoot/Grizzly/Dinner/Ridge/Brice

Date: **September 15, 2023**

## Major Hazards and Risks:

- \*Air Operations – Flight Hazards, bucket drops, Communications
- \*Transportation – Fatigue, complacency, driving too fast, narrow, blind corners, brushy & dusty Roads.
- \*Mop up- Ensure areas are free of hazard trees, watch footing, & stump holes.
- \*Personal Protective Equipment – Use it, use it properly!
- \*Snags- Maintain Situational awareness in burned areas for snags and weakened green trees.

## Avoid Complacency

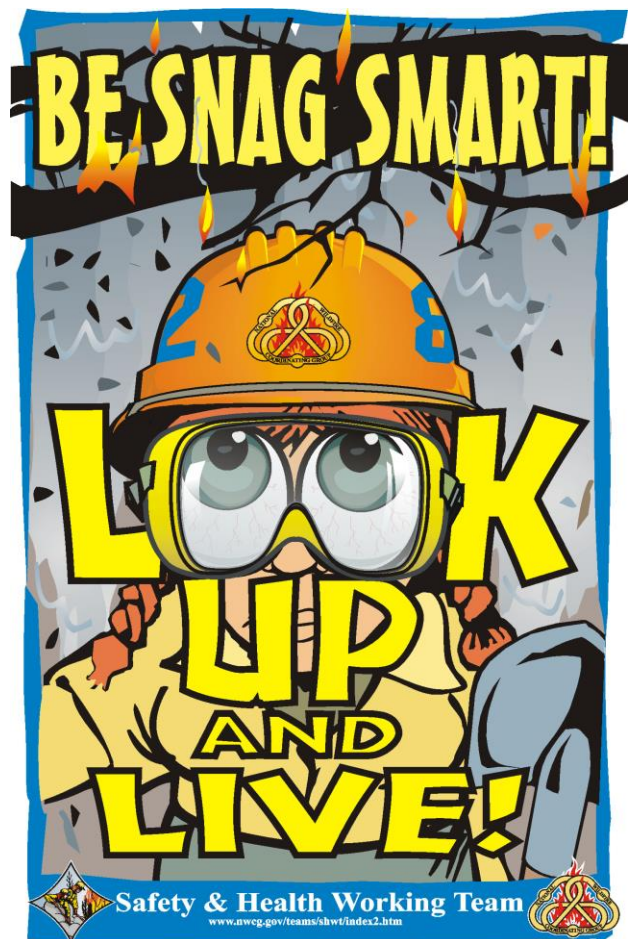
There is much danger in going into “autopilot” when on and going to and from the fireline. All too often we don’t realize how complacent we are until we have a near miss or close call. Those events tend to jump start our hearts and focus our attention . . . at least for a little while, on the task at hand.

One technique found to be effective in battling complacency in your own actions is to watch the actions of other while they work. This has a dual-fold effect in that it raises your awareness as you examine the actions of a coworker as they are working and it may raise your coworker’s awareness if you share with them some of the observations you made that would allow them to do their job in a safer manner. It can be a win-win.

## Watch Out Situation of the Day



4. UNFAMILIAR WITH WEATHER AND LOCAL FACTORS INFLUENCING FIRE BEHAVIOR







# Risk Assessment Worksheet



## 1. Project/Work Activity:

Dinner, Brice, Grizzly, Chilcoot and Ridge Fires

## 2. Location:

North Zone Umpqua NF

## 3. Specific Objective:

Containment of the UPF Fires

## 4. Name and Title of Preparer:

Eric Risdal SOF2

## 5. Date Prepared:

Wednesday, September 13, 2023

6. Risk Decision Authority: The risk decision authority block should be signed after the worksheet is completed. Use the Risk Decision Authority matrix to determine the authorization required to sign in block 6.

Signature: **TYSON ALBRECHT** Digitally signed by TYSON ALBRECHT Date: 2023.09.14 17:38:14 -0700

Title:

Incident Commander

Date: 9/14/2023

Identify Hazards		Assess Hazards		Develop Controls		Make Risk Decisions			Implement	
7. Task	8. Hazard	9. Hazard Probability	10. Severity	11. RAC	12. Identify risk mitigations & controls (press [alt + enter] to add a line)	13. Hazard Probability	14. Severity	15. RAC	16. Task Necessary?	17. Hazard Control Assigned to:
Medevac Extraction	Time to definitive care	Likely	Critical	Extremely High	Identify medivac sites and helispots. Initiate Ground Transport to accident site for Transport. Early and often conduct assessment of potential sites of extraction nearest to work areas. Practice IWI Drills with DIVS and all personnel. Short-Haul Ship flew all the fires to pre-identify extraction and landing areas.	Possible	Critical	High	YES	MEDL, OPS, Safety
Suppression	Hit by Hazards	Possible	Catastrophic	Extremely High	Utilize Heavy Equipment. Failures to Mitigate Known Hazard Trees. Indirect or monitor strategy to keep personnel out of high risk areas. Limit exposure time in high risk areas.	Unlikely	Catastrophic	High	YES	Ops, Safety
Suppression	Fire Behavior and Weather	Likely	Critical	Extremely High	Work with FBAN/IMET to monitor trends. Take weather readings hourly on the ground to help inform spot forecasts. Evaluate mission needs VS adverse weather conditions.	Possible	Critical	High	YES	Ops, Safety, IMET, FBAN
Suppression	Environmental Factors.	Likely	Critical	Extremely High	Be aware of surroundings. Make allergic reaction potential known. Carry Epi. work with medical immediately upon exposure/reaction. Work with LOGS to help reduce Hornet/Wasp attractants in camp. Areas attracting Hornet activity were removed from ICP. Shower, change and launder clothing after Poison Oak exposure. Work with READ/REAF to ensure personnel are aware of mining related hazards.	Possible	Critical	High	YES	Safety, Medical
ALL Incident Tasks	Respiratory illness	Likely	Critical	Extremely High	Stay home if sick, maintain hygiene, rest, fluid and caloric intake. Do not touch high traffic surfaces, clean work areas. Cover when you cough.	Possible	Critical	High	YES	All personnel
Suppression	Heavy Equipment Operations	Unlikely	Catastrophic	High	Maintain safe separation between Responders and Heavy Equipment. Use flaggers and pilot cars when transporting.	Rare	Catastrophic	Moderate	YES	OPS, Safety
Initial Attack	Lack of coordination/communication	Possible	Critical	High	Ensure COMMO plans are known and shared, clearly indicate expectations to personnel. Pre-identify potential IA Resources and brief to intent. Share required mapping products.	Unlikely	Critical	Moderate		
Suppression	Aviation Operations	Rare	Catastrophic	Moderate	Consider true need of each mission. Ensure all COMMO between ground and air resources is functioning. PIO to help with messaging regarding UAS incursions. Utilize secondary, A/G channel for Aviation RX missions. UAS platforms being used in place of other Aircraft to reduce exposure.	Rare	Catastrophic	Moderate	YES	Air-OPS, OPS

## LOGISTICS

Email orders to [2023.chilcoot.ordering@firenet.gov](mailto:2023.chilcoot.ordering@firenet.gov)

### Strader ICP

Location	Glide East of Green Bridge north on French Creek Road
Supply	Hours: 0630 - 2200
Ground Support	Hours: 0630 - 2200
Fuel Truck	Hours: 0630 - 2100
Weed Wash	Hours: 0700 - 2000
Meals	Hours: Breakfast 0530-0930    Dinner 1800 - 2200
Laundry	Hours: 0500 - 2200
Showers	Hours: 0500 – 1200 & 1400-2200

### Sharps Creek Base Camp    Email orders to [2023.dinner.ordering@firenet.gov](mailto:2023.dinner.ordering@firenet.gov)

Location	73792 Sharps Creek Road Dorena, OR
Supply	Hours: 0600 - 2130
Ground Support	Hours: 0600 - 2200
Fuel Truck	Hours: 0600 - 2200
Weed Wash	Hours: 0700 - 2000
Meals	Hours: Breakfast 0530-0900    Dinner 1700 - 2100
Laundry	Hours: 0600 -1300 & 1700 - 2200
Showers	Hours: 0500 – 1200 & 1400-2200

### 1-Mile Hose Kit for PNW Team 6

*Please note this is what will be sent out with an order for a 1- mile hose kit from supply with Team 6.*

NFES	QUANTITY	ISSUE	DESCRIPTION
1239	50	LG	1 1/2" Hose
1238	25	LG	1" Hose
1016	50	LG	3/4" Hose
0010	25	EA	Reducers 1 1/2" to 1"
0733	20	EA	Reducers 1" to 3/4"
0231	25	EA	1 1/2" Gated Wyes
0259	20	EA	1" Gated Wyes
0904	25	EA	3/4" Gated Wyes
0024	25	EA	Forrester Nozzles
0136	25	EA	Garden Nozzle
0738	25	EA	3/4" Shut Off
0664	2	EA	Fold a Tank 1500 gal
3870	2	EA	Mark III Kits
0606	3	EA	Can, safety
7724	3	EA	Oil, 2 stroke mix
0805	3	EA	Tags, 2 stroke
0148	2	EA	Pump, Mk III

# INCIDENT RADIO COMMUNICATIONS PLAN (ICS 205)

Controlled Unclassified Information //Basic

<b>1. Incident Name:</b>	<b>2. Date/time Prepared:</b>	<b>3. Operational Period:</b>
Umpqua Fires- Cottage Grove	Date: 09/14/23 Time: 1738	Date/Time From: 09/15/23 0700 HRS Date/Time To: 09/15/23 1900 HRS

4. Basie Radio Channel Use:										
Zone Group	Ch #	Function	Channel Name/Trunked Radio System Talk Group	Assignment	RX Freq	RX Tone/NAC	TX Freq	TX Tone/NAC	Mode (A.O. 0<M)	Remarks
	1	TACTICAL	TAC 1	DIV A	168.0500	100.0	168.0500	100.0	A	DIVISION ALPHA TACTICAL-BRICE FIRE
	2	TACTICAL	TAC 2	DIV C	168.2000	100.0	168.2000	100.0	A	DIVISION CHARLIE TACTICAL-BRICE FIRE
	3	TACTICAL	TAC 3	DIV D	168.6000	100.0	168.6000	100.0	A	DIVISION DELTA TACTICAL-DINNER FIRE
	4	TACTICAL	TAC 4	DIV S	166.7250	100.0	166.7250	100.0	A	DIVISION SIERRA ZULU TACTICAL-GRIZZLY FIRE
	5	TACTICAL	TAC 5	CURRENTLY UNASSIGNED	166.7750	100.0	166.7750	100.0	A	CURRENTLY UNASSIGNED
	6	TACTICAL	TAC 6	CURRENTLY UNASSIGNED	168.2500	100.0	168.2500	100.0	A	CURRENTLY UNASSIGNED
	7	COMMAND	CMD 7	COMMAND	170.0625	100.0	162.4375	100.0	A	COMMAND 7-LOCATED ON FAIRVIEW LOOKOUT
	8	COMMAND	CMD 8	COMMAND	169.6125	100.0	162.5125	100.0	A	COMMAND 8-CULP CREEK/SHARPS CAMP
	9	EMPTY	EMPTY	EMPTY						EMPTY CHANNEL/FUTURE EXPANSION
	10	FOREST REPEATER	FAIRVIEW LO	ALL RESOURCES	170.5500	103.5	164.8000	173.8	A	UPF N FAIRVIEW REPEATER
	11	TACTICAL	ODF RED	IA ONLY	151.3400	156.7	151.3400	156.7	A	INITIAL ATTACK USE ONLY
	12	AIR OPS	A/G 49	IA ONLY	168.0375	NONE	168.0375	NONE	A	INITIAL ATTACK USE ONLY
	13	AIR TO GROUND	A/G PRI	AIR TO GROUND PRIMARY	165.9875	NONE	165.9875	NONE	A	AIR TO GROUND OPERATIONS PRIMARY
	14	AIR TO GROUND	A/G SEC	AIR TO GROUND SECONDARY	173.5000	NONE	173.5000	NONE	A	AIR TO GROUND OPERATIONS SECONDARY
	15	AIR TO GROUND	V MED29	MEDICAL	155.3475	156.7	155.3475	156.7	A	MEDICAL EVACUATION ONLY
	16	AIR GUARD	AIR GUARD	ALL DIVS	168.6250	NONE	168.6250	110.9	A	EMERGENCY USE ON LY

<b>5. Special Instructions:</b>	
<b>6. Prepared By</b> (Communications Unit Leader)	<b>Signature:</b> TROY MCMILLAN
Communications staffed 0700-1900 hours. Phone: (949) 648-1591	Date/Time: 09/14/23 1738 HRS

Digitally signed by TROY MCMILLAN  
Date: 2023.09.14 18:39:41 -0600

# INCIDENT RADIO COMMUNICATIONS PLAN (ICS 205)

Controlled Unclassified Information //Basic

<b>1. Incident Name:</b>		<b>2. Date/Time Prepared:</b>		<b>3. Operational Period:</b>						
UMPQUA FIRES-NORTH UMPQUA		Date: 09/14/23 Time:		Date/Time From: 09/15/23 0700 HRS Date/Time To: 09/15/23 1900 HRS						
<b>4. Basie Radio Channel Use:</b>										
Zone Group	Ch #	Function	Channel Name/Trunked Radio System Talk Group	Assignment	RX Freq	RX Tone/NAC	TX Freq	TX Tone/NAC	Mode (A.O. 0<M)	Remarks
	1	TACTICAL	TAC 1	DIV J	168.0500	167.9	168.0500	167.9	A	DIVISION JULIET TACTICAL
	2	TACTICAL	TAC 2	DIV E	168.2000	167.9	168.2000	167.9	A	DIVISION ECHO TACTICAL
	3	TACTICAL	TAC 3	DIV H	168.6000	167.9	168.6000	167.9	A	DIVISION HOTEL TACTICAL
	4	TACTICAL	TAC 4	ROAD MAINTENANCE	166.7250	167.9	166.7250	167.9	A	ROAD MAINTENANCE TACTICAL
	5	TACTICAL	TAC 5	DIV W	166.7750	167.9	166.7750	167.9	A	DIVISION WHISKEY TACTICAL
	6	TACTICAL	TAC 6	CURRENTLY UNASSIGNED	168.2500	167.9	168.2500	167.9	A	CURRENTLY UNASSIGNED
	7	COMMAND	CMD 7	COMMAND	169.7500	167.9	167.1000	167.9	A	COMMAND 7-LOCATED ON SCOTT MOUNTAIN
	8	COMMAND	CMD 8	COMMAND	173.7125	167.9	162.6000	167.9	A	COMMAND 8- LOCATED ON PIG IRON LOOKOUT
	9	COMMAND	CMD 9	COMMAND	173.6000	167.9	169.4625	167.9	A	COMMAND 9- LOCATED ON CHILCOOT MOUNTAIN
	10	COMMAND	CMD 10	COMMAND	169.8375	167.9	162.4625	167.9	A	COMMAND 10- LOCATED ON RED BUTTE LOOKOUT
	11	FOREST REPEATER	CHILCOOT	ALL RESOURCES	170.5500	103.5	164.8000	192.8	A	UMF N CHILCOOT REPEATER
	12	FOREST REPEATER	PIG IRON	ALL RESOURCES	171.4125	103.5	166.0000	179.9	A	UMF N PIG IRON REPEATER
	13	AIR TO GROUND	A/G PRI	AIR TO GROUND PRIMARY	167.1500	NONE	167.1500	NONE	A	AIR TO GROUND OPERATIONS, PRIMARY
	14	AIR TO GROUND	A/G SEC	AIR TO GROUND SECONDARY	170.2625	NONE	170.2625		A	AIR TO GROUND OPERATIONS, SECONDARY
	15	AIR TO GROUND	VMED29	MEDICAL	155.3475	156.7	155.3475	156.7	A	MEDICAL USE ONLY
	16	AIR GUARD	AIR GUARD	ALL DIVS	168.6250	NONE	168.6250	110.9	A	EMERGENCY USE ON LY
<b>5. Special Instructions:</b>										
<b>6.Prepared By</b>				Name: Troy McMillan	<b>Signature: TROY MCMILLAN</b>					
(Communications Unit Leader)					Digitally signed by TROY MCMILLAN Date: 2023.09.14 16:36:42 -0600					
Communications staffed 0600-2200 hours. Phone: (949) 648-1591				<b>IAP Page</b>	Date/Time: 09/14/23 1738 HRS					



## FINANCE

Note: On the TOP of your CTR or ST please indicate Fire you were ordered on. Add in remarks section on CTR or ST Fire name you worked on.

### Finance Email:

**2023.dinner.finance@firenet.gov**

**2023.chilcoot.finance@firenet.gov**

### FINANCE CHECK IN:

**2023.dinner.finance@firenet.gov**

**2023.chilcoot.finance@firenet.gov**



CTR'S

Shift Ticket



### Required Financial Documents

Agency Overhead	Agency ADs / EFFs	Contract / Agency Crews	Cooperators
Resource Order	Resource Order	Resource Order	Resource Order
Signed CTRs	Casual Hire Form Signed CTRs	Manifest Agreement / Contract Schedule of Items Inspections Signed CTRs	Agreement Signed STs / CTRs

**PLEASE SEND CTR/SHIFT TICKET ELECTRONICALLY**  
**(In EMAIL subject: EX: TIME or CTR or SHIFT TICKET, RESOURCE ORDER, CASUAL HIRE FORM**  
**AND FIRST, LAST NAME)**  
**AND Fire Worked**

**Finance can be reached at:**

**Contractors: 971-713-0374; Overhead: 971-727-5250**

**COMP/CLAIMS – 971-245-0248**

**\*NOTE: If you are not able to submit an electronic version of your CTR or Shift Ticket. Please drop a hard copy in the Finance box. Make sure that a phone number is in the remarks section.**

# Information Section

Do you or the public need to reach the PIOs?

Phone: (541) 900-5862

Emails: Brice Creek/Dinner/Grizzly: [2023.dinner@firenet.gov](mailto:2023.dinner@firenet.gov)

Chilcoot/Ridge: [2023.chilcoot@firenet.gov](mailto:2023.chilcoot@firenet.gov)

Please email us your photos! (And don't forget your PPE 😊)



Chilcoot and Ridge Fires Information



Brice, Dinner, and Grizzly Fires Information

Scan the codes above to access links to each of the official sources of information on all five of the Umpqua Fires—from InciWeb to Facebook to email addresses, it's all there!

## Sharps Creek (Dorena PO)

Dorena Post Office: C/O (Your Name)  
75694 Wicks Road  
Dorena, OR 97434

### Notes on Dorena PO pick-up:

Persons picking up the mail must present ID for their mail.

Business hours:

9 AM- 1 PM Monday -Friday

11 AM- 12 PM Saturday

(Closed Sundays)

## Strader ICP (Glide ICP)

C/O (Your Name) Chilcoot Fire Camp  
373 French Creek Road  
Glide, OR 97443

Mail can be picked up with the PIOs at the Strader ICP in Glide.



**Call or visit us if you've lost something!  
We have a PIO shops in both Glide and  
Sharps Creek**



## Human Resource Message

### Umpqua Fires September 15, 2023

### Thrive

To thrive in life you  
need three bones.  
A wishbone.  
A backbone.  
And a funny bone.

*Reba McEntire*

Joining me for the next few days is an HRSP Trainee, KC Briggs. You can reach KC by text or phone call at 541-954-6520.

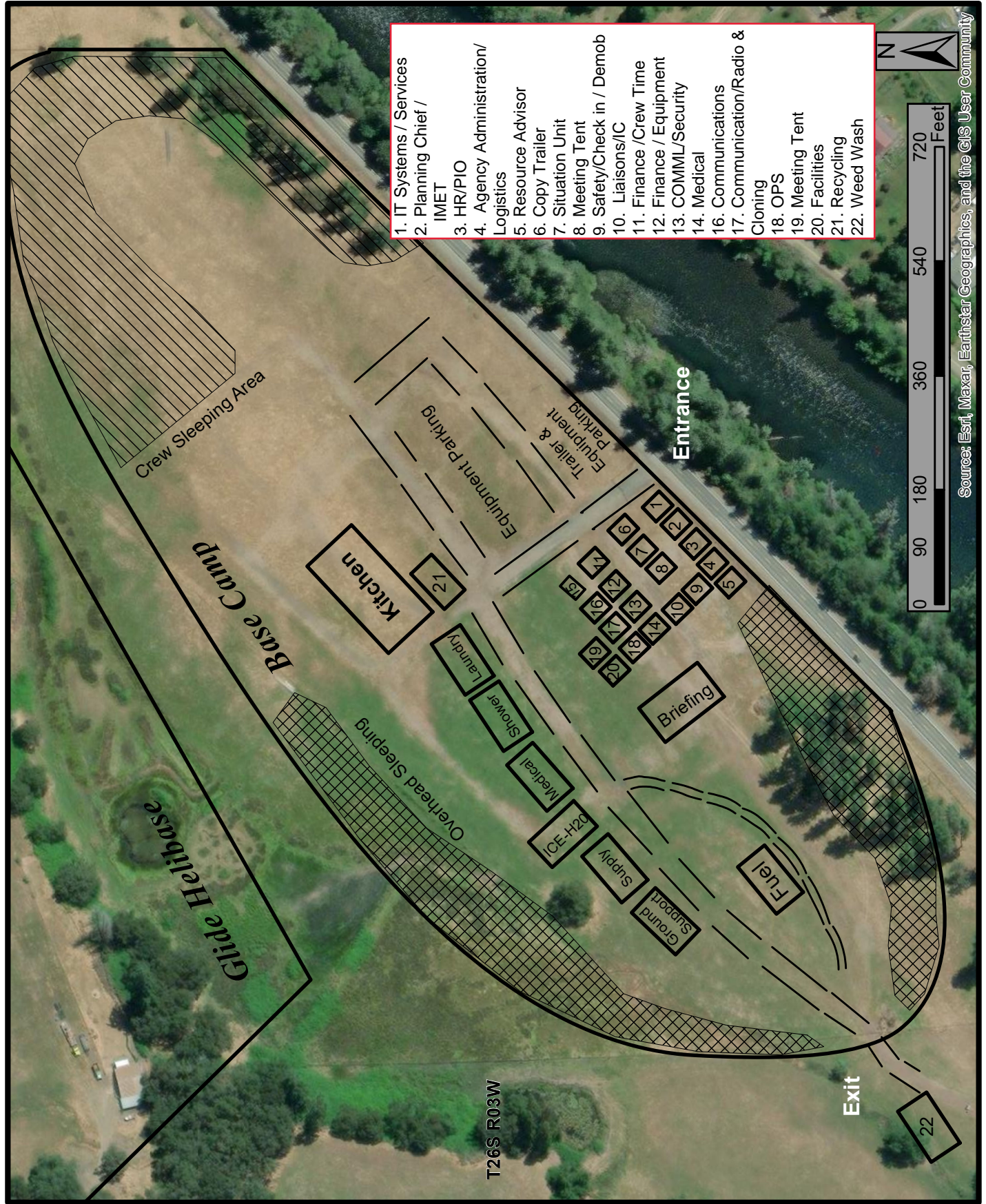
You can reach me by text or phone call at 503-575-8547. You can visit us in our yurt on the SW side of camp.

Have a safe shift and have a great day!

Audrey Matsumonji  
Human Resource Specialist  
503-575-8547

K.C. Briggs  
Human Resources Specialist Trainee  
541-954-6520

# Chilcoot ICP Basecamp Map



1. IT Systems / Services
2. Planning Chief / IMET
3. HR/PIO
4. Agency Administration/ Logistics
5. Resource Advisor
6. Copy Trailer
7. Situation Unit
8. Meeting Tent
9. Safety/Check in / Demob
10. Liaisons/IC
11. Finance /Crew Time
12. Finance / Equipment
13. COMML/Security
14. Medical
16. Communications
17. Communication/Radio & Cloning
18. OPS
19. Meeting Tent
20. Facilities
21. Recycling
22. Weed Wash

Source: Esri, Maxar, Earthstar Geographics, and the GIS User Community

T26S R03W



## Demob List for Friday 09/15/2023

<b>DINNER – BRICE CREEK - GRIZZLY FIRES</b>				
C-9	0830	CR2I	SANTIAM RIVER	DINNER
C-10001	0900	CRWC	NORTH PACIFIC FORESTRY	DINNER
E-1	0800	AMB2	TRI COUNTY AMBULANCE	DINNER
E-11	0815	ENG6	BIG BEAR LOGGING	BRICE
E-44	0830	ENG4	HI COUNTRY	DINNER
E-63	0845	AMB2	WILDERNESS MEDICS	DINNER
E-68	0900	ENG6	OVERWATCH ENTERPRISE	DINNER
O-90	0800	LSCC	FOOTEN, PAUL	DINNER
<b>CHILCOOT - RIDGE FIRES</b>				
E-104	0800	ENG6	WOODPECKER	CHILCOOT
E-106	0815	ENG6	FIRST STRIKE	CHILCOOT
E-109	0830	DZR2	GIESBRECHT	CHILCOOT
E-134	0845	PUP1	MNGLR	CHILCOOT
O-92	0800	TFLD	MARK, ERIC	CHILCOOT
O-133	0815	FMOD	PACIFIC RIDGELINE	CHILCOOT
O-181	0830	TFLD	MARSHALL, JANSON	CHILCOOT
O-187	0845	WFM2	WILDLAND FIRE T2	CHILCOOT
O-10013	0900	TFLD	DAVIS, LOGAN	CHILCOOT
O-112	0900	RADO	CABRERA, ANTHONY	CHILCOOT
O-192	0930	PIO3	TURNER, DYLAN	CHILCOOT
O-901	0945	DMOB	THOMAS, DONNA	CHILCOOT
O-10013	0945	TFLD	DAVIS, LOGAN	CHILCOOT
O-193	1000	RADO	CURNOW, MACY (ALSO O-178)	CHILCOOT
O-188	1800	TFLD	SHIELDS, RUSSEL	CHILCOOT

## Demob List for Saturday 09/16/2023

<b>DINNER – BRICE CREEK - GRIZZLY FIRES</b>				
E-14	0700	ENG6	FRANCO REFORESTATION	BRICE
O-2	0700	FMOD	CREEL CUTTING	GRIZZLY
O-73	0715	DIVS	LUCAS, JEFF	DINNER
O-80	0730	MEDL	CISNEROS, ANGELA	DINNER
O-83	0900	RADO	MOAG, HUGH	DINNER
O-59	1800	BCMG	DIXON, JEFFREY	DINNER
<b>CHILCOOT - RIDGE FIRES</b>				
C-33	0700	CR2I	GRAYBACK 16C	CHILCOOT
E-102	0700	ENG4	INBOUND	CHILCOOT
O-176	0715	EMTF	WILDLAND MEDICS	CHILCOOT
O-121	0730	RADO	AINSWORTH, KEN	CHILCOOT
O-161	0745	COMT	EWENS, LEIGHTON	CHILCOOT
O-900	0800	TNSP	HOLLINGSWORTH	CHILCOOT

## Demob List for Sunday 09/17/2023

<b>DINNER – BRICE CREEK - GRIZZLY FIRES</b>				
*** NO RESOURCES SCHEDULED ***				
<b>CHILCOOT – RIDGE FIRES</b>				
E-33	0700	MESU	MEDICAL SUPPORT UNIT	CHILCOOT
E-10001	0715	ENG5	CAS E3151	CHILCOOT
E-10003	0730	ENG5	ID E2351	CHILCOOT
O-177	0700	EMTF	KIME, ANASTASIA	CHILCOOT
O-182	0715	DIVS	ASHCRAFT, JOHN	CHILCOOT
O-199	0730	HEQB	MATHESON, RYAN	CHILCOOT
O-240.72	0745	COML	MCMILLAN, TROY	CHILCOOT
O-10005	0800	TFLD	VORE, ERIC	CHILCOOT

# Umpqua Fires

## Demob Check-Out Instruction Form

Pick up Demob Check-Out form at BRIEFING (IAP) or PLANNING to begin Process

RO # \_\_\_\_\_ Resource Name \_\_\_\_\_ Fire: \_\_\_\_\_ Date: \_\_\_\_\_

### Initial

**Follow these steps in the order below:**

- \_\_\_\_\_ 1. **Weed Wash** – ALL line resources that went off-road will need to go through a Weed Wash in your specific fire location. **If not needed, proceed to step 2.**
- \_\_\_\_\_ 2. **Ground support** – Contractors must stop to sign their release inspection. The inspection is optional for agency resources. **Agency resources proceed to step 3.**
- \_\_\_\_\_ 3. **Supply** – Return any items you checked out. All units must have an initial from SUPPLY confirming all equipment has been returned.
- \_\_\_\_\_ 4. **Communications** – Return any items you checked out. All units must have an initial from COMMUNICATIONS confirming all radio equipment has been returned.
- \_\_\_\_\_ 5. **Finance** – Proceed to finance to receive your final timesheet. Having ALL your times turned in and up to date will GREATLY speed up the process.
- \_\_\_\_\_ 6. **Demob – Final step.** Return completed Demob Check-Out form and any Documentation to Demob/Check-in. Contact Demob at 509-432-6143 with your estimated time of departure, arrival time and destination. You will not be released from the incident with Dispatch until this is completed.

### ALL AIR TRAVELERS

Submit your request 72 hours prior to flight date through the QR Code on the IAP Cover. Call 509-432-6143 for any questions or assistance.

### NIGHT SHIFT PERSONNEL

All night shift personnel coming off the line will be required to meet work/rest requirements before completing the Demob process.

### EXTENSIONS AND CREW SWAPS

All extension/crew swap processes **should be done at least 48 hours** before your last working day to help facilitate Operational resources and the Demob process.

**Division/Group Assignment List (ICS 204 WF)**  
**Controlled Unclassified Information//Basic**

<b>1. Incident Name:</b>				<b>3.</b>		
UMPQUA FIRES				<b>Branch:</b>	<b>Division/Group</b>  BRICE CREEK A/C	
<b>2. Operational Period: DAY</b>						
Date/Time From: 09/15/2023 0700 FRI		Date/Time To: 09/15/2023 1900 FRI				
<b>4. Operations Personnel</b>						
<b>OPERATIONS CHIEF</b>		DAN MARTIN		<b>BRANCH DIRECTOR</b>		
<b>SAFETY OFFICERS</b>		ERIC RISDAL SHANE THEALL		<b>DIVISION/GROUP SUPERVISOR</b>		DOUG CATES
<b>5. Resources Assigned this Period</b>						
Strike Team / Task Force / Resource Designator		LWD	Leader	Number Persons	Drop Off PT./Time	Pick Up PT./Time
O-240.32 SOF2		09/26	AL AUGUSTINE	1	SHARPS CREEK BASECAMP/0700	SHARPS CREEK BASECAMP/1900
O-4 TFLD		09/18	JACK MASTERS	1	SHARPS CREEK BASE CAMP/0700	SHARPS CREEK BASE CAMP/1900
O-240.69 TFLD (T)		09/25	MICHEAL DAKE	1	SHARPS CREEK BASE CAMP/0700	SHARPS CREEK BASE CAMP/1900
O-2 FMOD CREEL CUTTING		09/15	TYLER GRAVES	1	SHARPS CREEK BASE CAMP/0700	SHARPS CREEK BASE CAMP/1900
C-17 CR2I VALE SRV #12		09/23	JULIAN I JACOBO	24	SHARPS CREEK BASE CAMP/0700	SHARPS CREEK BASE CAMP/1900
C-18 CR2I CENTRAL OREGON #05		09/24	NICHOLAS FOEY	20	SHARPS CREEK BASE CAMP/0700	SHARPS CREEK BASE CAMP/1900
E-39 ENG4 STERLING SYSTEMS		09/16	BRIAN MOORE	3	SHARPS CREEK BASE CAMP/0700	SHARPS CREEK BASE CAMP/1900
E-10 ENG6 THREE STRIPES		09/18	TIMOTHY PEARSON	3	SHARPS CREEK BASE CAMP/0700	SHARPS CREEK BASE CAMP/1900
E-14 ENG6 FRANCO REFORESTATION		09/15	CHOY HUMERTO	3	SHARPS CREEK BASE CAMP/0700	SHARPS CREEK BASE CAMP/1900
E-2 WTS2 RHY-DEM		09/24	RUSSEL ROBINSON	1	SHARPS CREEK BASE CAMP/0700	SHARPS CREEK BASE CAMP/1900
E-18 WTS2 IRELAND BROTHERS		09/23	ERIC ARASMITH	1	SHARPS CREEK BASE CAMP/0700	SHARPS CREEK BASE CAMP/1900
E-10000 DZR2 R & L EXCAVATING		09/25	CHAD SCOFIELD	2	SHARPS CREEK BASE CAMP/0700	SHARPS CREEK BASE CAMP/1900
E-12 CHP2 SALAMANDER INCIDENT SERVICES		09/17	ZACH UNDERWOOD	3	SHARPS CREEK BASE CAMP/0700	SHARPS CREEK BASE CAMP/1900
<b>8. Division/Group Communication Summary</b>						
Function	Channel	RX Frequency N/W	RX Tone/NAC	TX Frequency N/W	TX Tone/NAC	Mode
TACTICAL	TAC 1	168.0500	100.0	168.0500	100.0	A
COMMAND	CMD 7	170.0625	100.0	162.4375	100.0	A
COMMAND	CMD 8	169.6125	100.0	162.5125	100.0	A
AIR TO GROUND	A/G PRI	165.9875		165.9875		A
AIR TO GROUND	A/G SEC	173.5000		173.5000		A
AIR GUARD	AIR GUARD	168.6250		168.6250	110.9	A
<b>9. Prepared By (Resource Unit Leader)</b>			<b>Approved By (Planning Section Chief)</b>		<b>Date</b>	<b>Time</b>
JAMES MAHAFFY RESL (T)			KRISANN KOSEL		09/14/2023	2200

**Division/Group Assignment List (ICS 204 WF)**  
**Controlled Unclassified Information//Basic**

<b>1. Incident Name:</b>				<b>3.</b>		
UMPQUA FIRES				<b>Branch:</b>	<b>Division/Group</b>	
<b>2. Operational Period: DAY</b>						
Date/Time From: 09/15/2023 0700 FRI		Date/Time To: 09/15/2023 1900 FRI		<b>BRICE CREEK A/C</b>		
<b>4. Operations Personnel</b>						
<b>OPERATIONS CHIEF</b>		DAN MARTIN		<b>BRANCH DIRECTOR</b>		
<b>SAFETY OFFICERS</b>		ERIC RISDAL SHANE THEALL		<b>DIVISION/GROUP SUPERVISOR</b> DOUG CATES		
<b>5. Resources Assigned this Period</b>						
Strike Team / Task Force / Resource Designator		LWD	Leader	Number Persons	Drop Off PT./Time	Pick Up PT./Time
O-29 REMS BEYOND THE EDGE (REMS 1)		09/26	JOE DECKER	4	SHARPS CREEK BASE CAMP/0700	SHARPS CREEK BASE CAMP/1900
O-85 REMS HART (REMS 2)		09/17	SUEANN MURPHY	4	SHARPS CREEK BASE CAMP/0700	SHARPS CREEK BASE CAMP/1900
E-63 AMB2 WILDERNESS MEDICS (AMBO 4)		09/14	MATT ROTH	2	SHARPS CREEK BASE CAMP/0700	SHARPS CREEK BASE CAMP/1900
O-129 REAF		09/23	JEDIDIAH HANCOCK	1	SHARPS CREEK BASE CAMP/0700	SHARPS CREEK BASE CAMP/1900
E-1 VUTV TOP GUN					SHARPS CREEK BASE CAMP/0700	SHARPS CREEK BASE CAMP/1900
E-16 VUTV TOP GUN					SHARPS CREEK BASE CAMP/0700	SHARPS CREEK BASE CAMP/1900
<b>6. Control Operations/Work Assignments:</b>						
<p>Task: Continue to hold, secure, and mop-up control lines. Monitor conditions in preparation to implement firing plan in direct areas. Complete contingency line preparation.</p> <p>Purpose: Prevent fire from impacting values at risk, including communities to the west, commercial timberlands and T&amp;E habitat.</p> <p>End State: Fire is kept north of 22 RD, south of the 2216 RD, and east of the 732 RD. To protect the values at risk through the remainder of the fire season.</p>						
<b>7. Special Instructions:</b>						
<ul style="list-style-type: none"> <li>All resources assigned to this division will add BRICE CREEK FIRE to all CTR and SHIFT TICKETS, OR-UPF-000359 P6QLI4. Ensure signage is adequate at all drop points.</li> <li>Add signage to all major intersections to help with locating drop points.</li> </ul>						
<b>8. Division/Group Communication Summary</b>						
Function	Channel	RX Frequency N/W	RX Tone/NAC	TX Frequency N/W	TX Tone/NAC	Mode
TACTICAL	TAC 1	168.0500	100.0	168.0500	100.0	A
COMMAND	CMD 7	170.0625	100.0	162.4375	100.0	A
COMMAND	CMD 8	169.6125	100.0	162.5125	100.0	A
AIR TO GROUND	A/G PRI	165.9875		165.9875		A
AIR TO GROUND	A/G SEC	173.5000		173.5000		A
AIR GUARD	AIR GUARD	168.6250		168.6250	110.9	A
<b>9. Prepared By (Resource Unit Leader)</b>			<b>Approved By (Planning Section Chief)</b>		<b>Date</b>	<b>Time</b>
JAMES MAHAFFY RESL (T)			KRISANN KOSEL		09/14/2023	2200

**Division/Group Assignment List (ICS 204 WF)**  
**Controlled Unclassified Information//Basic**

<b>1. Incident Name:</b>				<b>3.</b>		
UMPQUA FIRES				<b>Branch:</b>	<b>Division/Group</b>	
<b>2. Operational Period: DAY</b>						
Date/Time From: 09/15/2023 0700 FRI		Date/Time To: 09/15/2023 1900 FRI		<b>DINNER D</b>		
<b>4. Operations Personnel</b>						
<b>OPERATIONS CHIEF</b>		DAN MARTIN		<b>BRANCH DIRECTOR</b>		
<b>SAFETY OFFICERS</b>		ERIC RISDALL SHANE THEALL		<b>DIVISION/GROUP SUPERVISOR</b> LOGAN LAWSON		
<b>5. Resources Assigned this Period</b>						
Strike Team / Task Force / Resource Designator		LWD	Leader	Number Persons	Drop Off PT./Time	Pick Up PT./Time
O-240 SOF2		09/26	AL AUGUSTINE	1	SHARPS CREEK BASE CAMP/0700	SHARPS CREEK BASE CAMP/1900
E-42 ENG4 METHOW RIVER WILD FIRE		09/27	JOHN NEUNEKER	3	SHARPS CREEK BASE CAMP/0700	SHARPS CREEK BASE CAMP/1900
E-11 ENG6 JD FORESTRY		09/16	FELIX DROESCH	3	SHARPS CREEK BASE CAMP/0700	SHARPS CREEK BASE CAMP/1900
E-64 AMB2 ROUGH COUNTRY (AMBO 5)		09/17	JESSIE EVANS	2	SHARPS CREEK BASE CAMP/0700	SHARPS CREEK BASE CAMP/1900
O-129 REAF		09/23	JEDIDIAH HANCOCK	1	SHARPS CREEK BASE CAMP/0700	SHARPS CREEK BASE CAMP/1900
<b>6. Control Operations/Work Assignments:</b>						
<p>Task: Continue to patrol and secure fireline. Continue with fire suppression repair work.</p> <p>Purpose: Prevent fire from impacting values at risk, including communities to the west, commercial timberlands, T&amp;E habitat.</p> <p>End State: Fire is kept north of 1745 RD and south of 1746 RD to protect the values at risk through the remainder of the fire season.</p>						
<b>7. Special Instructions:</b>						
<ul style="list-style-type: none"> <li>All resources assigned to this division need to add DINNER FIRE OR-UPF-000357 P6QLF5 (0615) to your CTR's and Shift Tickets</li> </ul>						
<b>8. Division/Group Communication Summary</b>						
Function	Channel	RX Frequency N/W	RX Tone/NAC	TX Frequency N/W	TX Tone/NAC	Mode
TACTICAL	TAC 3	168.6000	100.0	168.6000	100.0	A
COMMAND	CMD 7	170.0625	100.0	162.4375	100.0	A
COMMAND	CMD 8	169.6125	100.0	162.5125	100.0	A
AIR TO GROUND	A/G PRI	165.9875		165.9875		A
AIR TO GROUND	A/G SEC	173.5000		173.5000		A
AIR GUARD	AIR GUARD	168.6250		168.6250	110.9	A
<b>9. Prepared By (Resource Unit Leader)</b>			<b>Approved By (Planning Section Chief)</b>		<b>Date</b>	<b>Time</b>
JAMES MAHAFFY RESL(T)			KRISANN KOSEL		09/14/2023	2200

**Division/Group Assignment List (ICS 204 WF)**  
**Controlled Unclassified Information//Basic**

<b>1. Incident Name:</b>				<b>3.</b>		
UMPQUA FIRES				<b>Branch:</b>	<b>Division/Group</b>	
<b>2. Operational Period: DAY</b>						
Date/Time From: 09/15/2023 0700 FRI		Date/Time To: 09/15/2023 1900 FRI		<b>GRIZZLY S/Z</b>		
<b>4. Operations Personnel</b>						
<b>OPERATIONS CHIEF</b> DAN MARTIN		<b>BRANCH DIRECTOR</b>				
<b>SAFETY OFFICERS</b> ERIC RISDAL SHANE THEALL		<b>DIVISION/GROUP SUPERVISOR</b>		RORY HIETT		
<b>5. Resources Assigned this Period</b>						
Strike Team / Task Force / Resource Designator	LWD	Leader	Number Persons	Drop Off PT./Time	Pick Up PT./Time	
O-36 SOFC	09/20	RICHARD M MCCONNELL	1	SHARPS CREEK BASE CAMP/0700	SHARPS CREEK BASE CAMP/1900	
O-240.32 SOF2	09/26	AL AUGUSTINE	1	SHARPS CREEK BASECAMP/0700	SHARPS CREEK BASECAMP/1900	
O-209 STORM PEAK WFM	09/18	TIM CUSACK	13	SHARPS CREEK BASE CAMP/0700	SHARPS CREEK BASE CAMP/1900	
E-7 WTS3 PACIFIC RIDGELINE	09/21	JUSTIN RIOLO	1	SHARPS CREEK BASE CAMP/0700	SHARPS CREEK BASE CAMP/1900	
E-1 AMB2 TRI COUNTY AMBULANCE (AMBO 3)	09/14	LONNIE CAMP	2	SHARPS CREEK BASE CAMP/0700	SHARPS CREEK BASE CAMP/1900	
O-129 REAF	09/23	JEDIDIAH HANCOCK	1	SHARPS CREEK BASECAMP/0700	SHARPS CREEK BASECAMP/1900	
E-13 VUTV KD OUTDOORS LLC				SHARPS CREEK BASE CAMP/0700	SHARPS CREEK BASE CAMP/1900	
E-84 VUTV KWIK RESPONSE SUPPORT				SHARPS CREEK BASE CAMP/0700	SHARPS CREEK BASE CAMP/1900	
E-90 VUTV TOG GUN				SHARPS CREEK BASE CAMP/0700	SHARPS CREEK BASE CAMP/1900	
<b>8. Division/Group Communication Summary</b>						
Function	Channel	RX Frequency N/W	RX Tone/NAC	TX Frequency N/W	TX Tone/NAC	Mode
TACTICAL	TAC 4	166.7250	100.0	166.7250	100.0	A
COMMAND	CMD 7	170.0625	100.0	162.4375	100.0	A
COMMAND	CMD 8	169.6125	100.0	162.5125	100.0	A
AIR TO GROUND	A/G PRI	165.9875		165.9875		A
AIR TO GROUND	A/G SEC	173.5000		173.5000		A
AIR GUARD	AIR GUARD	168.6250		168.6250	110.9	A
<b>9. Prepared By (Resource Unit Leader)</b>		<b>Approved By (Planning Section Chief)</b>		<b>Date</b>	<b>Time</b>	
JAMES MAHAFFY RESL (T)		KRISANN KOSEL		09/14/2023	2200	

# Division/Group Assignment List (ICS 204 WF)

Controlled Unclassified Information//Basic

<b>1. Incident Name:</b>			<b>3.</b>			
UMPQUA FIRES			<b>Branch:</b>		<b>Division/Group</b>	
<b>2. Operational Period: DAY</b>						
Date/Time From: 09/15/2023 0700 FRI		Date/Time To: 09/15/2023 1900 FRI		<b>GRIZZLY S/Z</b>		
<b>4. Operations Personnel</b>						
<b>OPERATIONS CHIEF</b>		DAN MARTIN		<b>BRANCH DIRECTOR</b>		
<b>SAFETY OFFICERS</b>		ERIC RISDAL SHANE THEALL		<b>DIVISION/GROUP SUPERVISOR</b>		RORY HIETT
<b>5. Resources Assigned this Period</b>						
Strike Team / Task Force / Resource Designator	LWD	Leader	Number Persons	Drop Off PT./Time	Pick Up PT./Time	
<b>6. Control Operations/Work Assignments:</b>						
<p><b>Task:</b> Assess need to take action on the Grizzly fire using pre-identified actions as defined in the management action points.</p> <p><b>Purpose:</b> Prevent fire from impacting values at risk, including private residences, communities to the west, historic mining community and infrastructure and commercial timberlands.</p> <p><b>End State:</b> Fire is kept west of the 2213 RD, north of the 904 RD, east of the 2473 RD, and south of 22 RD, to protect the values at risk through the remainder of fire season. Structures are prepped and secured.</p>						
<b>7. Special Instructions:</b>						
<ul style="list-style-type: none"> <li>All resources assigned to this division need to add Grizzly Fire OR-UPF-000341 P6QL0W (0615) to your CTR's and shift tickets.</li> </ul>						
<b>8. Division/Group Communication Summary</b>						
Function	Channel	RX Frequency N/W	RX Tone/NAC	TX Frequency N/W	TX Tone/NAC	Mode
TACTICAL	TAC 4	166.7250	100.0	166.7250	100.0	A
COMMAND	CMD 7	170.0625	100.0	162.4375	100.0	A
COMMAND	CMD 8	169.6125	100.0	162.5125	100.0	A
AIR TO GROUND	A/G PRI	165.9875		165.9875		A
AIR TO GROUND	A/G SEC	173.5000		173.5000		A
AIR GUARD	AIR GUARD	168.6250		168.6250	110.9	A
<b>9. Prepared By (Resource Unit Leader)</b>			<b>Approved By (Planning Section Chief)</b>		<b>Date</b>	<b>Time</b>
JAMES MAHAFFY RESL (T)			KRISANN KOSEL		09/14/2023	2200



**Division/Group Assignment List (ICS 204 WF)**  
**Controlled Unclassified Information//Basic**

<b>1. Incident Name:</b>			<b>3.</b>			
UMPQUA FIRES			<b>Branch:</b>		<b>Division/Group</b>	
<b>2. Operational Period:</b> 0700 - 1900					CHILCOOT E	
Date/Time From: 09/15/2023 0700 FRI	Date/Time To: 09/15/2023 1900 FRI					
<b>4. Operations Personnel</b>						
<b>OPERATIONS CHIEF</b> DAN MARTIN		<b>SAFETY OFFICERS</b> ERIC RISDAL SHANE THEALL				
<b>BRANCH DIRECTOR</b>		<b>DIVISION/GROUP SUPERVISOR</b> NICK PETERS				
<b>5. Resources Assigned this Period</b>						
Strike Team / Task Force / Resource Designator	LWD	Leader	Number Persons	Drop Off PT./Time	Pick Up PT./Time	
O-90 SOFR	09/20	MICHAEL GOYETTE	1	STRADER ICP/0700	STRADER ICP/1900	
O-265 SOFR	09/26	MICHAEL JOHNSON	1	STRADER ICP/0700	STRADER ICP/1900	
O-240.71 TFLD(T)	09/25	MEGAN HURRELL	1	STRADER ICP/0700	STRADER ICP/1900	
C-47 CR2I SRV #10	09/23	ANDRES HERNADEZ	25	STRADER ICP/0700	STRADER ICP/1900	
C-33 CRW2 GRAYBACK	09/15	ROBERT PONDELICK	20	STRADER ICP/0700	STRADER ICP/1900	
C-50 CRW2 GFP	09/25	JESSE SZABO	20	STRADER ICP/0700	STRADER ICP/1900	
C-51 CRW2 OROZCO	09/24	CHRIS OROZCO	20	STRADER ICP/0700	STRADER ICP/1900	
E-188 ENG4 ORUPF E424	09/22	JEFF CASE	5	STRADER ICP/0700	STRADER ICP/1900	
E-183 ENG6 TIMBER TIPPER	09/24	MIKE CADE	3	STRADER ICP/0700	STRADER ICP/1900	
E-185 ENG6 GRAYBACK E25	09/24	ARIC PAUL	3	STRADER ICP/0700	STRADER ICP/1900	
E-112 WTT1 HYDROTACTICAL	09/20	DANIEL WARNER	2	STRADER ICP/0700	STRADER ICP/1900	
E-137 WTS2 ON THE GO H2O	09/15	MAY MAYAK	1	STRADER ICP/0700	STRADER ICP/1900	
E-138 WTS2 COWBOY FIRE	09/27	MALIKI PARKER	1	STRADER ICP/0700	STRADER ICP/1900	
E-178 WTS2 SIMONS	09/17	JOSETTE ROCHAT	1	STRADER ICP/0700	STRADER ICP/1900	
E-114 EXC2 SCOTT MARSHALL	09/24	SCOTT MARSHALL	2	STRADER ICP/0700	STRADER ICP/1900	
<b>8. Division/Group Communication Summary</b>						
Function	Channel	RX Frequency N/W	RX Tone/NAC	TX Frequency N/W	TX Tone/NAC	Mode
TACTICAL	TAC 2	168.2000	167.9	168.2000	167.9	A
COMMAND	CMD 7	169.7500	167.9	167.1000	167.9	A
COMMAND	CMD 9	173.6000	167.9	169.4625	167.9	A
AIR TO GROUND	A/G PRI	167.1500		167.1500		A
AIR TO GROUND	A/G SEC	170.2625		170.2625		A
AIR GUARD	AIR GUARD	168.6250		168.6250	110.9	A
<b>9. Prepared By (Resource Unit Leader)</b>		<b>Approved By (Planning Section Chief)</b>		<b>Date</b>		<b>Time</b>
STEPHANIE FALCON		KRISANN KOSEL		09/14/2023		2200

**Division/Group Assignment List (ICS 204 WF)**  
**Controlled Unclassified Information//Basic**

<b>1. Incident Name:</b>				<b>3.</b>		
UMPQUA FIRES				<b>Branch:</b>	<b>Division/Group</b>	
<b>2. Operational Period: 0700 - 1900</b>						
Date/Time From: 09/15/2023 0700 FRI		Date/Time To: 09/15/2023 1900 FRI		<b>CHILCOOT E</b>		
<b>4. Operations Personnel</b>						
<b>OPERATIONS CHIEF</b> DAN MARTIN		<b>SAFETY OFFICERS</b> ERIC RISDAL SHANE THEALL				
<b>BRANCH DIRECTOR</b>		<b>DIVISION/GROUP SUPERVISOR</b> NICK PETERS				
<b>5. Resources Assigned this Period</b>						
Strike Team / Task Force / Resource Designator	LWD	Leader	Number Persons	Drop Off PT./Time	Pick Up PT./Time	
E-177 DZR2 PARKHURST EXCAVATION	09/18	KIESHA JOYSON	2	STRADER ICP/0700	STRADER ICP/1900	
E-10016 CHP2 IRA TORRES	09/22	ADAN CHAVEZ	3	STRADER ICP/0700	STRADER ICP/1900	
E-10017 CHP2 IRA TORRES	09/22	ISMAEL LOPEZ	3	STRADER ICP/0700	STRADER ICP/1900	
E-6 GRD1 MARK JONES TRUCKING	09/26	JESS CALVERT	2	STRADER ICP/0700	STRADER ICP/1900	
E-12 VROL MARK JONES TRUCKING	09/19	JUSTIN MURPHY	2	STRADER ICP/0700	STRADER ICP/1900	
O-72 REMS BACKCOUNTRY (REMS 11)	09/21	BANEX	5	STRADER ICP/0700	STRADER ICP/1900	
E-32 AMBO UNLIMITED PARAMEDICS (AMBO 22)	09/18	SETH CRIBB	2	STRADER ICP/0700	STRADER ICP/1900	
O-64 EMPF	09/18	RICH DOBSON	1	STRADER ICP/0700	STRADER ICP/1900	
O-58 EMTF	09/18	SOREN CAUDILL	1	STRADER ICP/0700	STRADER ICP/1900	
O-234 REAF	09/24	NATALIE MILLS	1	STRADER ICP/0700	STRADER ICP/1900	
O-237 REAF(T)	09/25	ELIZABETH DAY	1	STRADER ICP/0700	STRADER ICP/1900	
O-238 REAF	09/21	CHRIS MCGRATH	1	STRADER ICP/0700	STRADER ICP/1900	
O-233 REAF	09/21	DANE SJODEN	1	STRADER ICP/0700	STRADER ICP/1900	
O-142 REAF	09/24	BRADY DODD	1	STRADER ICP/0700	STRADER ICP/1900	
O-108 REAF	09/13	CHASE BOYLARD	1	STRADER ICP/0700	STRADER ICP/1900	
<b>8. Division/Group Communication Summary</b>						
Function	Channel	RX Frequency N/W	RX Tone/NAC	TX Frequency N/W	TX Tone/NAC	Mode
TACTICAL	TAC 2	168.2000	167.9	168.2000	167.9	A
COMMAND	CMD 7	169.7500	167.9	167.1000	167.9	A
COMMAND	CMD 9	173.6000	167.9	169.4625	167.9	A
AIR TO GROUND	A/G PRI	167.1500		167.1500		A
AIR TO GROUND	A/G SEC	170.2625		170.2625		A
AIR GUARD	AIR GUARD	168.6250		168.6250	110.9	A
<b>9. Prepared By (Resource Unit Leader)</b>		<b>Approved By (Planning Section Chief)</b>		<b>Date</b>	<b>Time</b>	
STEPHANIE FALCON		KRISANN KOSEL		09/14/2023	2200	

**Division/Group Assignment List (ICS 204 WF)**

**Controlled Unclassified Information//Basic**

<b>1. Incident Name:</b>			<b>3.</b>			
UMPQUA FIRES			<b>Branch:</b>		<b>Division/Group</b>	
<b>2. Operational Period:</b> 0700 - 1900					CHILCOOT E	
Date/Time From: 09/15/2023 0700 FRI		Date/Time To: 09/15/2023 1900 FRI				
<b>4. Operations Personnel</b>						
<b>OPERATIONS CHIEF</b> DAN MARTIN		<b>SAFETY OFFICERS</b> ERIC RISDAL SHANE THEALL				
<b>BRANCH DIRECTOR</b>		<b>DIVISION/GROUP SUPERVISOR</b> NICK PETERS				
<b>5. Resources Assigned this Period</b>						
Strike Team / Task Force / Resource Designator		LWD	Leader	Number Persons	Drop Off PT./Time	Pick Up PT./Time
<b>6. Control Operations/Work Assignments:</b>						
<b>Task:</b> Complete and improve containment lines from the 3806 RD along the perimeter to Hipower Bluffs. Improve control lines and mop-up along the 3806 RD. Continue any remaining prep along the 300 spur road. <b>Mop up</b> and secure from th 3806 RD into the head of Hipower Creek.						
<b>Purpose:</b> To prevent fire from impacting values such as nearby communities, private timberland, critical infrastructure by limiting fire spread.						
<b>End State:</b> Fire is contained west of the 3806 RD and 300 RD and north of the Hipower Bluffs.						
<b>7. Special Instructions:</b>						
<ul style="list-style-type: none"><li>Utilize Chilcoot repeater. Mitigate snag hazard and implement the risk management process in tactical decisions. Support tactics that minimize impacts to private property. Avoid waterways with retardant applications and reduce impact to Salmom/Steelhead protected populations. Ensure signage is adequate to all drop points. Add signage at all major intersections to help with locating drop points.</li><li>Resources assigned to this division should put OR-UPF-000345 Chilcoot P6QLF5 (0615) on all CTR's and shift tickets.</li></ul>						
<b>8. Division/Group Communication Summary</b>						
Function	Channel	RX Frequency N/W	RX Tone/NAC	TX Frequency N/W	TX Tone/NAC	Mode
TACTICAL	TAC 2	168.2000	167.9	168.2000	167.9	A
COMMAND	CMD 7	169.7500	167.9	167.1000	167.9	A
COMMAND	CMD 9	173.6000	167.9	169.4625	167.9	A
AIR TO GROUND	A/G PRI	167.1500		167.1500		A
AIR TO GROUND	A/G SEC	170.2625		170.2625		A
AIR GUARD	AIR GUARD	168.6250		168.6250	110.9	A
<b>9. Prepared By (Resource Unit Leader)</b>			<b>Approved By (Planning Section Chief)</b>		<b>Date</b>	<b>Time</b>
STEPHANIE FALCON			KRISANN KOSEL		09/14/2023	2200

## Division/Group Assignment List (ICS 204 WF)

Controlled Unclassified Information//Basic

<b>1. Incident Name:</b>				<b>3.</b>			
UMPQUA FIRES				<b>Branch:</b>		<b>Division/Group</b>	
<b>2. Operational Period:</b> 0700 - 1900							
Date/Time From: 09/15/2023 0700 FRI		Date/Time To: 09/15/2023 1900 FRI		<b>CHILCOOT H</b>			
<b>4. Operations Personnel</b>							
<b>OPERATIONS CHIEF</b> DAN MARTIN				<b>SAFETY OFFICERS</b> ERIC RISDAL SHANE THEALL			
<b>BRANCH DIRECTOR</b>				<b>DIVISION/GROUP SUPERVISOR</b> JON MILES JOHN ASHCRAFT (T)			
<b>5. Resources Assigned this Period</b>							
Strike Team / Task Force / Resource Designator		LWD	Leader	Number Persons	Drop Off PT./Time	Pick Up PT./Time	
O-265 SOFR		09/26	MICHAEL JOHNSON	1	STRADER /0700	STRADER/1900	
O-10005 STEN		09/16	ERIC VORE	1	STRADER/0700	STRADER/1900	
E-102 ENG4 INBOUND		09/15	MIKE HOLLOWAT	3	STRADER/0700	STRADER/1900	
E-190 ENG4 J3		09/25	JOSE ARIZMENDI	3	STRADER/0700	STRADER/1900	
E-10001 ENG5 CAS E-3151		09/16	KATHRYN WEST	5	STRADER/0700	STRADER/1900	
E-10003 ENG5 ID E-2351		09/16	TYLER PRESSER	4	STRADER/0700	STRADER/1900	
E-184 ENG6 DIAMOND FIRE		09/24	NICHOLAS KING	3	STRADER/0700	STRADER/1900	
E-187 ENG6 FRANCO			REBECCA PICKERING	3	STRADER/0700	STRADER/1900	
O-57 EMTF		09/18	MELISSA MARTINEZ	1	STRADER/0700	STRADER/1900	
O-174 EMPF		09/17	GREG GIFFORD	1	STRADER/0700	STRADER/1900	
<b>8. Division/Group Communication Summary</b>							
Function	Channel	RX Frequency N/W	RX Tone/NAC	TX Frequency N/W	TX Tone/NAC	Mode	
TACTICAL	TAC 3	168.6000	167.9	168.6000	167.9	A	
COMMAND	CMD 8	173.7125	167.9	162.6000	167.9	A	
COMMAND	CMD 9	173.6000	167.9	169.4625	167.9	A	
AIR TO GROUND	A/G PRI	167.1500		167.1500		A	
AIR TO GROUND	A/G SEC	170.2625		170.2625		A	
AIR GUARD	AIR GUARD	168.6250		168.6250	110.9	A	
<b>9. Prepared By (Resource Unit Leader)</b>			<b>Approved By (Planning Section Chief)</b>			<b>Date</b>	<b>Time</b>
STEPHANIE FALCON			KRISANN KOSEL			09/14/2023	2200

**Division/Group Assignment List (ICS 204 WF)**  
**Controlled Unclassified Information//Basic**

<b>1. Incident Name:</b>				<b>3.</b>		
UMPQUA FIRES				<b>Branch:</b>	<b>Division/Group</b>  <b>CHILCOOT H</b>	
<b>2. Operational Period:</b> 0700 - 1900						
Date/Time From: 09/15/2023 0700 FRI		Date/Time To: 09/15/2023 1900 FRI				
<b>4. Operations Personnel</b>						
<b>OPERATIONS CHIEF</b> DAN MARTIN		<b>SAFETY OFFICERS</b> ERIC RISDAL SHANE THEALL				
<b>BRANCH DIRECTOR</b>		<b>DIVISION/GROUP SUPERVISOR</b> JON MILES JOHN ASHCRAFT (T)				
<b>5. Resources Assigned this Period</b>						
Strike Team / Task Force / Resource Designator	LWD	Leader	Number Persons	Drop Off PT./Time	Pick Up PT./Time	
<b>6. Control Operations/Work Assignments:</b>						
<b>Task:</b> Continue mop-up and securing along Hipower Creek. Continue lining and securing the fire edge at the head of Hipower creek. Monitor conditions and develop options as needed to burn out areas of dirty burn/ indirect line on the north edge of the fire near Hipower Creek.						
<b>Purpose:</b> To prevent fore from impacting values, such as nearby communities, private timberland, and critical infrastructure by limiting fire spread.						
<b>End State:</b> Fire is contained along existing fireline in Hipower creek, and south of the ridge line above the head of Hipower Creek.						
<b>7. Special Instructions:</b>						
<ul style="list-style-type: none"> <li>Mitigate aerial hazards, both standing live and snag trees. Survey work areas and implement the risk management process in all tactical decisions. Support tactics that minimize impacts to private timber and property. Avoid waterways with retardant applications and use screens to reduce impact to Salmo/ Steelhead protected populations.</li> <li>All resources assigned to this division need to out OR0UPF-000345 P6QLF5 (0615) on there CTR's and shift tickets.</li> </ul>						
<b>8. Division/Group Communication Summary</b>						
Function	Channel	RX Frequency N/W	RX Tone/NAC	TX Frequency N/W	TX Tone/NAC	Mode
TACTICAL	TAC 3	168.6000	167.9	168.6000	167.9	A
COMMAND	CMD 8	173.7125	167.9	162.6000	167.9	A
COMMAND	CMD 9	173.6000	167.9	169.4625	167.9	A
AIR TO GROUND	A/G PRI	167.1500		167.1500		A
AIR TO GROUND	A/G SEC	170.2625		170.2625		A
AIR GUARD	AIR GUARD	168.6250		168.6250	110.9	A
<b>9. Prepared By (Resource Unit Leader)</b>			<b>Approved By (Planning Section Chief)</b>		<b>Date</b>	<b>Time</b>
STEPHANIE FALCON			KRISANN KOSEL		09/14/2023	2200

**Division/Group Assignment List (ICS 204 WF)**  
**Controlled Unclassified Information//Basic**

<b>1. Incident Name:</b>				<b>3.</b>		
UMPQUA FIRES				<b>Branch:</b>	<b>Division/Group</b>  <b>CHILCOOT J</b>	
<b>2. Operational Period:</b> 0700 - 1900						
Date/Time From: 09/15/2023 0700 FRI		Date/Time To: 09/15/2023 1900 FRI				
<b>4. Operations Personnel</b>						
<b>OPERATIONS CHIEF</b> DAN MARTIN		<b>SAFETY OFFICERS</b> ERIC RISDAL SHANE THEALL				
<b>BRANCH DIRECTOR</b>		<b>DIVISION/GROUP SUPERVISOR</b>			DAN COTHREN	
<b>5. Resources Assigned this Period</b>						
Strike Team / Task Force / Resource Designator	LWD	Leader	Number Persons	Drop Off PT./Time	Pick Up PT./Time	
O-265 SOFR	09/26	MICHAEL JOHNSON	1	STRADER ICP/0700	STRADER ICP/1900	
O-188 TFLD(T)	09/15	RUSSELL SHIELDS	1	STRADER ICP/0700	STRADER ICP/1900	
O-199 HEQB	09/16	RYAN MATHESON	1	STRADER ICP/0700	STRADER ICP/1900	
C-49 CRW1 HELENA IHC	09/26	TIGHE STOYANOFF	25	STRADER ICP/0700	STRADER ICP/1900	
C-53 CR2I WENATCHEE RIVER	09/26	BRIAN FLATTEN	18	STRADER ICP/0700	STRADER ICP/1900	
C-52 CRW2 PACIFIC OASIS	09/28	ALEX HESS	20	STRADER ICP/0700	STRADER ICP/1900	
E-189 ENG4 DIAMOND FIRE	09/23	DEAN WILSON	3	STRADER ICP/0700	STRADER ICP/1900	
E-13 WTS2 SCOTT MARSHALL	09/20	BENNEY YOKUM	1	STRADER ICP/0700	STRADER ICP/1900	
E-173 WTS2 SCOTT MARSHALL	09/21	RICHARD JOHNSON	1	STRADER ICP/0700	STRADER ICP/1900	
E-24 DZR2 TOUGH EQUIPMENT	09/25	ROBERT ASHERIN	2	STRADER ICP/0700	STRADER ICP/1900	
E-157 SKG SKIDGINE	09/18	MICHAEL SUTCH	2	STRADER ICP/0700	STRADER ICP/1900	
E-158 SKG SKIDGINE	09/18	JEREMY RUSSELL	2	STRADER ICP/0700	STRADER ICP/1900	
O-73 REMS ROUGH COUNTRY (REMS 22)	09/19	ANDREW PADDISON	4	STRADER ICP/0700	STRADER ICP/1900	
E-142 AMB2 (MED MOD 1)	09/20	CHAARLES CARLSON	2	STRADER ICP/0700	STRADER ICP/1900	
E-175 AMBU BEST PRACTICES (AMBO 44)	09/22	DEVIN BEST	2	STRADER ICP/0700	STRADER ICP/1900	
O-59 EMTF	09/18	JORJA WELCH	1	STRADER ICP/0700	STRADER ICP/1900	
O-62 EMPF	09/18	JEFFERY KAISER	1	STRADER ICP/0700	STRADER ICP/1900	
O-234 REAF	09/24	NATALIE R MILLS	1	STRADER ICP/0700	STRADER ICP/1900	
<b>8. Division/Group Communication Summary</b>						
Function	Channel	RX Frequency N/W	RX Tone/NAC	TX Frequency N/W	TX Tone/NAC	Mode
TACTICAL	TAC 1	168.0500	167.9	168.0500	167.9	A
COMMAND	CMD 8	173.7125	167.9	162.6000	167.9	A
COMMAND	CMD 9	173.6000	167.9	169.4625	167.9	A
AIR TO GROUND	A/G PRI	167.1500		167.1500		A
AIR TO GROUND	A/G SEC	170.2625		170.2625		A
AIR GUARD	AIR GUARD	168.6250		168.6250	110.9	A
<b>9. Prepared By (Resource Unit Leader)</b>			<b>Approved By (Planning Section Chief)</b>		<b>Date</b>	<b>Time</b>
STEPHANIE FALCON			KRISANN KOSEL		09/14/2023	2200

**Division/Group Assignment List (ICS 204 WF)**  
**Controlled Unclassified Information//Basic**

<b>1. Incident Name:</b>				<b>3.</b>		
UMPQUA FIRES				<b>Branch:</b>	<b>Division/Group</b>	
<b>2. Operational Period:</b> 0700 - 1900						
Date/Time From: 09/15/2023 0700 FRI		Date/Time To: 09/15/2023 1900 FRI		CHILCOOT J		
<b>4. Operations Personnel</b>						
<b>OPERATIONS CHIEF</b> DAN MARTIN		<b>SAFETY OFFICERS</b> ERIC RISDAL SHANE THEALL				
<b>BRANCH DIRECTOR</b>		<b>DIVISION/GROUP SUPERVISOR</b> DAN COTHREN				
<b>5. Resources Assigned this Period</b>						
Strike Team / Task Force / Resource Designator	LWD	Leader	Number Persons	Drop Off PT./Time	Pick Up PT./Time	
O-157 REAF	09/13	SOPHIA KIM	1	STRADER ICP/0700	STRADER ICP/1900	
O-143 REAF (T)	09/21	MADELYN HOUSTON	1	STRADER ICP/0700	STRADER ICP/1900	
O-237 REAF (T)	09/25	ELIZABETH DAY	1	STRADER ICP/0700	STRADER ICP/1900	
E-136 UTV				STRADER ICP/0700	STRADER ICP/1900	
E-137 UTV				STRADER ICP/0700	STRADER ICP/1900	
<b>6. Control Operations/Work Assignments:</b>						
<p><b>Task:</b> Continue to take action to secure fire from the southwest corner of Hipower Creek to the 3803 RD. Complete fireline preparation on the indirect line off the 3803 RD. Monitor conditions and continue preparation for implementing firing plan in indirect areas.</p> <p><b>Purpose:</b> To prevent fire from impacting nearby communities, private timberland, and critical infrastructure by limiting fire spread.</p> <p><b>End State:</b> Fire is contained east of the forest boundary, west of the Hipower Bluffs and north of the indirect line connected to the 3803 RD.</p>						
<b>7. Special Instructions:</b>						
<ul style="list-style-type: none"> <li>Survey and mitigate aerial hazards including live trees and snags as needed. Implementing risk management process in all tactical decisions, utilize tactics that minimize impacts to private property. Avoid waterways with retardant. Use screens to reduce impact on salmon/ steelhead protected populations.</li> <li>Ensure signage is adequate at all drop points. Add signage at all major intersections to help with locating drop zones.</li> <li>All resources assigned to this Division need to put OR-UPF 000345 P6QLF5 (0615) on all CTR's and shift tickets.</li> </ul>						
<b>8. Division/Group Communication Summary</b>						
Function	Channel	RX Frequency N/W	RX Tone/NAC	TX Frequency N/W	TX Tone/NAC	Mode
TACTICAL	TAC 1	168.0500	167.9	168.0500	167.9	A
COMMAND	CMD 8	173.7125	167.9	162.6000	167.9	A
COMMAND	CMD 9	173.6000	167.9	169.4625	167.9	A
AIR TO GROUND	A/G PRI	167.1500		167.1500		A
AIR TO GROUND	A/G SEC	170.2625		170.2625		A
AIR GUARD	AIR GUARD	168.6250		168.6250	110.9	A
<b>9. Prepared By (Resource Unit Leader)</b>		<b>Approved By (Planning Section Chief)</b>		<b>Date</b>	<b>Time</b>	
STEPHANIE FALCON		KRISANN KOSEL		09/14/2023	2200	

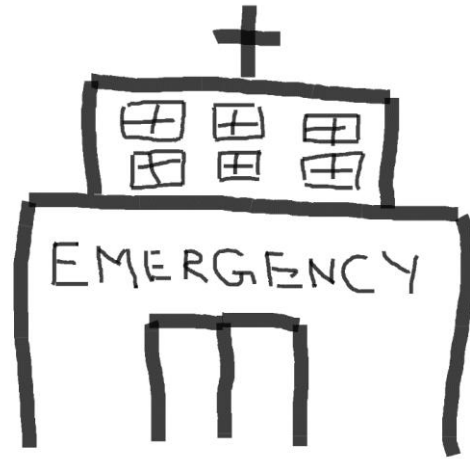
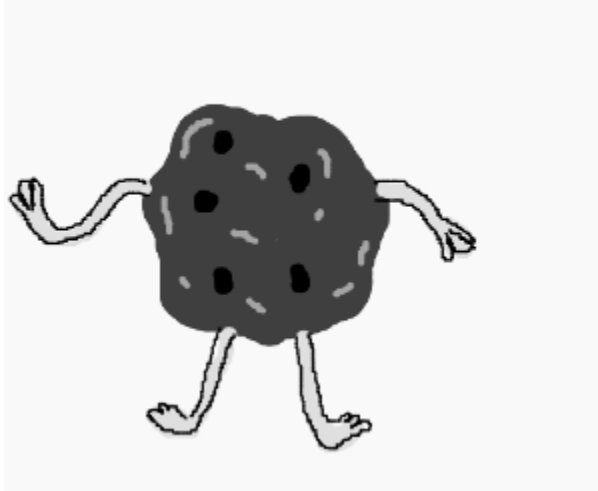
**Division/Group Assignment List (ICS 204 WF)**  
**Controlled Unclassified Information//Basic**

<b>1. Incident Name:</b>			<b>3.</b>			
UMPQUA FIRES			<b>Branch:</b>		<b>Division/Group</b>	
<b>2. Operational Period:</b> 0700 - 1900					RIDGE W	
Date/Time From: 09/15/2023 0700 FRI		Date/Time To: 09/15/2023 1900 FRI				
<b>4. Operations Personnel</b>						
<b>OPERATIONS CHIEF</b> DAN MARTIN		<b>SAFETY OFFICERS</b> ERIC RISDAL SHANE THEALL				
<b>BRANCH DIRECTOR</b>		<b>DIVISION/GROUP SUPERVISOR</b> SHILOW NORTON				
<b>5. Resources Assigned this Period</b>						
Strike Team / Task Force / Resource Designator		LWD	Leader	Number Persons	Drop Off PT./Time	Pick Up PT./Time
O-265 SOFR		09/26	MICHAEL JOHNSON	1	STRADER ICP/0700	STRADER ICP/1900
E-4 ENG4 TORRES		09/17	HARLEY MEAD	3	STRADER ICP/0700	STRADER ICP/1900
E-186 ENG6 FENIX FORESTRY		09/24	SUZANNE FLYNN	3	STRADER ICP/0700	STRADER ICP/1900
O-63 EMPF		09/19	TOM GIBSON	1	STRADER ICP/0700	STRADER ICP/1900
O-177 EMTF		09/16	ANASTASIA KIME	1	STRADER ICP/0700	STRADER ICP/1900
<b>6. Control Operations/Work Assignments:</b>						
<p><b>Task:</b> Complete line on north part of Ridge Fire. Look for opportunities to secure fire edge in the northeast corner of fire below 5851 RD. Begin repair on 5851 RD. Continue mop-up and securing line on the remainder of the fire.</p> <p><b>Purpose:</b> Prevent impact to nearby values by limiting fire spread towards Fuller Lake, the Willamette NF and Boulder Creek Wilderness.</p> <p><b>End State:</b> Fire is contained east of Fuller Lake, North of the 3810 RD and west of the 5851 Rd.</p>						
<b>7. Special Instructions:</b>						
<ul style="list-style-type: none"> <li>Mitigate aerial hazards, both standing live and snag trees. Survey work areas and implement the risk management process in all tactical decisions. Support tactics that minimize impacts to private timber property. Avoid waterways with retardant applications and use screens to reduce the impact to Salmon/ Steelhead protected populations.</li> <li>Ensure signage is adequate at all drop points. Add signage at all major intersections to help with locating drop points.</li> <li>All resources assigned to this division will put OR-UPF-000346 P6QLFA (0615) on the bottom of CTR's and shift tickets.</li> </ul>						
<b>8. Division/Group Communication Summary</b>						
Function	Channel	RX Frequency N/W	RX Tone/NAC	TX Frequency N/W	TX Tone/NAC	Mode
TACTICAL	TAC 5	166.7750	167.9	166.7750	167.9	A
COMMAND	CMD 8	173.7125	167.9	162.6000	167.9	A
AIR TO GROUND	A/G PRI	167.1500		167.1500		A
AIR TO GROUND	A/G SEC	170.2625		170.2625		A
AIR GUARD	AIR GUARD	168.6250		168.6250	110.9	A
<b>9. Prepared By (Resource Unit Leader)</b>			<b>Approved By (Planning Section Chief)</b>		<b>Date</b>	<b>Time</b>
STEPHANIE FALCON			KRISANN KOSEL		09/14/2023	2200



# Disease Prevention

Why did the cookie go to the hospital?



Because he was feeling Crummy.

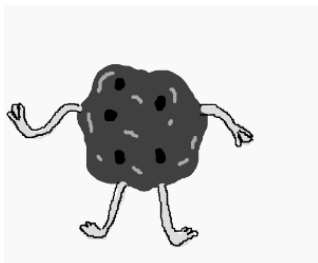
Avoid feeling crummy by:

Wash your hands

Drink lots of fluids

Eat your vegetables

And step away from the cookie.



# MEDICAL PLAN (ICS 206 WF)

Controlled unclassified Information Basic

1. Incident/Project Name			2. Operational Period					
Umpqua Fires (Dinner, Brice Creek & Grizzly Fires)			Date/Time		9/15/2023, 0600-2200			
3. Ambulance Services								
Name	Complete Address	Phone & EMS Frequency	Advanced Life Support					
			Yes	No				
South Lane Fire & Rescue	233 E. Harrison Ave, Cottage Grove, OR	Command Channel/911(Backup)	X					
4. Air Ambulance Services								
Name		Phone	Type of Aircraft and Capability					
Commercial Air Ambulance		911 / 541-344-2211	Closest available based on availability					
Teton, N38HX		Command	Short Haul, Day time use only					
5. Hospitals								
Name Address	GPS Datum – WGS 84		Travel Time		Phone	Helipad		Level of Care
			Air	Gnd		Yes	No	
Sacred Heart MC Riverbend 3333 Riverbend Dr. Springfield, OR 97477	Lat: N 44° 04.876' Long: W 123° 01.588' VHF:	30 min	1 hr	(541) 222-1581	X		Level II Trauma	
PeaceHealth Cottage Grove Community MC 1515 Village Dr Cottage Grove, OR	Lat: N 43° 48.2292' Long: W 123° 2.3801' VHF:	15 min	30 Min	(541) 726-4580	X		Level 3 Trauma	
McKenzie-Willamette MC 1460 G St Springfield, OR 97477	Lat: N 44° 03.217' Long: W 123° 00.219' VHF:	30 min	1 hr	(541) 726-4580	X		Non Trauma	
Legacy Emanuel 2801 N Gantenbein Ave Portland OR 97227	Lat: N 45°32.66' Long: W 122° 40.18' VHF:	1 hr	2 hr 30 min	(503) 413-2285	X		Level I / Burn Center	
6. Branch/Div/Group		Area Location Capability						
Grizzly Fire DIV S/Z		Ambo 3 - Camp						
Brice Creek Fire DIV A/C		REMS 2 - Murphy, Ambo 4 - Lyman REMS 1- Decker (Shadowing REMS 2)						
Dinner Fire DIV D		Ambo 5 - Evans						
Sharps Creek Base Camp		MEDL Angela Cisneros - Thorsvold MEDL(t) Christy Field						
8. Prepared By (Medical Unit Leader)		9. Date/Time	10. Reviewed By (Safety Officer)			11. Date/Time		
Paul Smith, MEDLT		9/14/2023	Eric Risdal ERIC RISDAL <small>Digitally signed by ERIC RISDAL Date: 2023.09.14 20:32:41 -0700</small>					

# MEDICAL PLAN (ICS 206 WF)

Controlled unclassified Information Basic

1. Incident/Project Name		2. Operational Period						
UMPQUA FIRES (Chilcoot Fire & Ridge Fire)		Date/Time	9/15/2023 0600-2200					
3. Ambulance Services								
Name	Complete Address	Radio Frequency & Phone	Advanced Life Support					
			Yes	No				
Umpqua Valley Ambulance	1290 NE Cedar St. Roseburg OR	Command Channel/911 (backup)	X					
4. Air Ambulance Services								
Name	Phone	Type of Aircraft and Capability						
Commercial Air Ambulance	Command /911(backup)	Closest available ship based on availability						
Teton N38HX	Command Channel	Short Haul Capable (Walterville OR)						
Yellowstone N234BH	Command Channel	Short Haul Capable (Grants Pass OR)						
5. Hospitals								
Name Address	GPS Datum – WGS 84		Travel Time		Phone	Helipad		Level of Care
			Air	Gnd		Yes	No	
Mercy Medical Center 2700 NW Stewart Pkwy Roseburg, OR	<b>Lat:</b> N 43° 14.567'	<b>Long:</b> W 123° 21.983'	30 min	1 hr	(541) 673-0611	X		Level III Trauma
	<b>VHF:</b>							
Legacy Emanuel 2801 N Gantenbein Ave Portland OR 97227	<b>Lat:</b> N 45°32.66'	<b>Long:</b> W 122° 40.18'	2 hr	4 hr	(503) 413-2285	X		Level I / Burn Center
	<b>VHF:</b>							
6. Branch/Div/Group	Area Location Capability							
<b>DIV J (Chilcoot)</b>	Med. Mod 1 - Carlson, Ambo 44 - Best, REMS 22 - Paddison EMPF Kaiser, EMTF Welch							
<b>DIV E (Chilcoot)</b>	REMS 11 - Banex, Ambo 22 - Cribb EMTF Caudill, EMPF Dobson							
<b>DIV H (Chilcoot)</b>	EMPF Gifford EMTF Martinez							
<b>DIV W (Ridge)</b>	EMPF Gibson EMTF Kime							
<b>Chilcoot ICP</b>	MESU Cardinal Medical - Julie Sargent (In-Camp Treatment) MEDL Laura Belino, MEDL John Nokes (509) 680-1339 MEDL(t) Paul Smith							
8. Prepared By (Medical Unit Leader)	9. Date/Time	10. Reviewed By (Safety Officer)	11. Date/Time					
Paul Smith , MEDLT	9/14/2023	Eric Risdal ERIC RISDAL	9/14/2023					

# IWI Procedures

## **Fire Line**

1. Request closest EMT/Medic to the injured person and report to DIV Supervisor.
2. Contact **Chilcoot Communications** and declare a “Red medical” (critical), “Yellow medical” (serious), or “Green medical” (minor). Request emergency radio traffic if needed.
3. Give location of patient and best access for initial responders.
4. Describe injury(s): Are they bleeding? How much? Are they conscious? Can they talk? Do they know what’s going on? How many people are hurt.
5. Gather information for MIR and relay to dispatch as soon as practical (see MIR back page)

## **Sharps Basecamp**

1. Life threatening emergency, call 911
2. Call Chilcoot Communications on Command 7 or 8 or (310) 780-4296
3. Contact (go to) the medical tent.
4. Call the medical tent 310-780-4296

## **Strader ICP**

1. Life threatening emergency, call 911
2. Call Chilcoot Communications on Command or 949-648-1591
3. Non-life-threatening go to blue medical trailer located between lunch trailer and laundry trailer

**ACTIVITY LOG (ICS 214)**

<b>1. Incident Name:</b>	<b>2. Operational Period:</b> Date From: _____ Date To: _____ Time From: _____ Time To: _____
--------------------------	--

<b>3. Name:</b>	<b>4. ICS Position:</b>	<b>5. Home Agency (and Unit):</b>
-----------------	-------------------------	-----------------------------------

<b>6. Resources Assigned:</b>		
Name	ICS Position	Home Agency (and Unit)

<b>7. Activity Log:</b>	
Date/Time	Notable Activities

<b>8. Prepared by:</b> Name: _____	Position/Title: _____	Signature: _____
<b>ICS 214, Page 1</b>		Date/Time: _____

# MEDICAL PLAN (ICS 206 WF)

Controlled Unclassified Information//Basic

## Medical Incident Report

**FOR A NON-EMERGENCY INCIDENT, WORK THROUGH CHAIN OF COMMAND TO REPORT AND TRANSPORT INJURED PERSONNEL AS NECESSARY.**

**FOR A MEDICAL EMERGENCY: IDENTIFY ON SCENE INCIDENT COMMANDER BY NAME AND POSITION AND ANNOUNCE "MEDICAL EMERGENCY" TO INITIATE RESPONSE FROM IMT COMMUNICATIONS/DISPATCH.**

Use the following items to communicate situation to communications/dispatch.

**1. CONTACT COMMUNICATIONS / DISPATCH (Verify correct frequency prior to starting report)**

*Ex: "Communications, Div. Alpha. Stand-by for Emergency Traffic."*

**2. INCIDENT STATUS: Provide incident summary (including number of patients) and command structure.**

*Ex: "Communications, I have a Red priority patient, unconscious, struck by a falling tree. Requesting air ambulance to Forest Road 1 at (Lat./Long.) This will be the Trout Meadow Medical, IC is TFLD Jones. EMT Smith is providing medical care."*

Severity of Emergency / Transport Priority	<input type="checkbox"/> RED / PRIORITY 1 Life or limb threatening injury or illness. Evacuation need is IMMEDIATE <i>Ex: Unconscious, difficulty breathing, bleeding severely, 2° – 3° burns more than 4 palm sizes, heat stroke, disoriented.</i> <input type="checkbox"/> YELLOW / PRIORITY 2 Serious Injury or illness. Evacuation may be DELAYED if necessary. <i>Ex: Significant trauma, unable to walk, 2° – 3° burns not more than 1-3 palm sizes.</i> <input type="checkbox"/> GREEN / PRIORITY 3 Minor Injury or illness. Non-Emergency transport <i>Ex: Sprains, strains, minor heat-related illness.</i>	
Nature of Injury or Illness & Mechanism of Injury		<i>Brief Summary of Injury or Illness (Ex: Unconscious, Struck by Falling Tree)</i>
Transport Request		<i>Air Ambulance / Short Haul/Hoist Ground Ambulance / Other</i>
Patient Location		<i>Descriptive Location &amp; Lat. / Long. (WGS84)</i>
Incident Name		<i>Geographic Name + "Medical" (Ex: Trout Meadow Medical)</i>
On-Scene Incident Commander		<i>Name of on-scene IC of Incident within an Incident (Ex: TFLD Jones)</i>
Patient Care		<i>Name of Care Provider (Ex: EMT Smith)</i>

**3. INITIAL PATIENT ASSESSMENT: Complete this section for each patient as applicable (start with the most severe patient)**

Patient Assessment: See IRPG page 106

Treatment:

**4. TRANSPORT PLAN:**

Evacuation Location (if different): (Descriptive Location (drop point, intersection, etc.) or Lat. / Long.) Patient's ETA to Evacuation Location:

Helispot / Extraction Site Size and Hazards:

**5. ADDITIONAL RESOURCES / EQUIPMENT NEEDS:**

*Example: Paramedic/EMT, Crews, Immobilization Devices, AED, Oxygen, Trauma Bag, IV/Fluid(s), Splints, Rope rescue, Wheeled litter, HAZMAT, Extrication*

**6. COMMUNICATIONS: Identify State Air/Ground EMS Frequencies and Hospital Contacts as applicable**

Function	Channel Name/Number	Receive (RX)	Tone/NAC *	Transmit (TX)	Tone/NAC *
COMMAND					
AIR-TO-GRND					
TACTICAL					

**7. CONTINGENCY: Considerations: If primary options fail, what actions can be implemented in conjunction with primary evacuation method? Be thinking ahead.**

**8. ADDITIONAL INFORMATION: Updates/Changes, etc.**

**REMEMBER:** Confirm ETA's of resources ordered. Act according to your level of training. Be Alert. Keep Calm. Think Clearly. Act Decisively.