







Incident Objectives (ICS 202)						
1. Incident Name			2. Date Prepared		3. Time Prepared	
Umpqua Fires			9/16/2023		2000	
4. Operational Period (Date and Time)						
From:	9/17/2023	at	700	To:	9/17/2023	at 1900
5. Strategic Framework and Leaders Intent						
Strategic Framework:						
Implement suppression strategies that minimize impacts to identified values at risk, and that ensures firefighter and public safety are the top priority						
Specifically manage risk to firefighters by ensuring hazards are identified, assessed, and where possible mitigated. Be prepared to accept residual risk when exposure is commensurate with values threatened and the probability of achieving objectives is high.						
Leaders Intent:						
Engage in all work assignments with a high degree of professionalism and provide excellent customer service to all parties involved with the incident. All assigned personnel should:						
* Exhibit professional behavior						
* Ensure effective communication						
* Manage personal safety and the safety of others						
* Conduct effective fatigue management and implement work/rest cycles						
6. Management Objectives and Requirements						
Implement operational plans that establish holding features across the entire perimeter of each fire resulting in minimized duration and physical extent of each, and maximizing the protection of:						
* Highway 138 corridor						
* Private timber lands						
* Bohemia Mining District, Fairview Comm Site, Chilcoot Repeater, and other infrastructure						
* Active USFS timber sales						
* Natural and cultural resources						
Coordinate all fire suppression and repair work with Resource Advisors to protect natural and cultural values.						
Maintain effective relationships by ensuring timely information between the IMT, affected agencies, and the public.						
7. Operational Period Command Emphasis						
Rinse and repeat? Fuels are especially dry, although the weather continues to moderate. Fires that have been parked are on the move. Luckily, fire behavior should be low to moderate, still allowing active suppression where it is safe and appropriate to do so.						
8. Attachments (check if attached)						
X	Organization List (ICS 203)	X	Medical Plan (ICS 206)	X	Fire Behavior	
X	Assignment List (ICS 204)	X	Safety Message			
X	Communications Plan (ICS 205)	X	General Forecast			
9. Prepared by (Planning Section Chief)			10. Approved by (Incident Commander)			
						





# Fire Weather Forecast



**FORECAST NO:** 18  
**FORECAST FOR:** Sunday Day Shift  
**SHIFT DATE:** 09/17/2023  
**DATE AND TIME ISSUED:** 09/16/2023 at 2000

**NAME OF FIRE:** Umpqua Fires  
**UNIT:** OR-UPF  
**SIGNED:** Steve Bodnar - Incident Meteorologist  
 405-203-9850 (cell) / stephen.bodnar@noaa.gov

**WEATHER DISCUSSION:** High pressure remains over the fire today but will continue to flatten as a shortwave tracks through Washington. There will be an influx of mid and high level clouds through the afternoon filtering sunshine. Look for subtle trends with temperatures and humidity. Winds will shift west earlier in the day and remain west to northwest through the afternoon. Slopes and drainages with alignment will be exposed to gusts of 15-18 mph.

## SUNDAY:

**WEATHER:** Mostly sunny, increasing mid and high clouds. Hazy with high level smoke from regional wildfires.

	Max Temperatures	Minimum Relative Humidity
<b>Valleys</b> (2500-3500 ft)	83-87° (Down 1-3)	21-27% (Up 5%)
<b>Ridges</b> (3500-4500 ft)	76-81° (Down 2-4) **	22-26% AM incr 28-35% (Up 6%) **

\*\*Sheltered Valleys on north aspects will experience temps/RH similar to ridge forecast.

## **20-FOOT WINDS:**

**Valleys and Slopes:** Upslope/upvalley 3 to 7 mph. Slopes and valleys aligned with west/northwest general winds, speeds increasing 6 to 10 mph gusts to 16 mph after 1300.

**Ridgetops:** West 3 to 6 mph becoming west/northwest 7-11 mph gusts up to 18 mph after 1300.

**AVIATION:** Smoke from Grizzly/Brice Creek trapped in valley inversions through 1300, local visibility 2-6SM.

**CWR (≥ 0.25"):** 0%      **LAL:** 1      **HAINES:** 3      **INVERSION BREAK/MH:** 1100 hrs/ 6500 ft

**CAMP FORECAST:**                      **Strader ICP:** 87F                      **Sharps Creek Base Camp:** 86F

## SUNDAY NIGHT:

**WEATHER:** Mostly cloudy.

	Min Temperatures - trend	Maximum Relative Humidity - trend
<b>Valleys</b> (2500-3500 ft)	50-54° - cooler	55-65% - wetter
<b>Ridges</b> (3500-4500 ft)	53-58° - little change	45-60% - wetter

## **20-FOOT WINDS:**

Valleys and Slopes: Downslope/drainage 1 to 4 mph.

Ridgetops: East/northeast 4 to 7 mph.

**CWR (≥ 0.25"):** 0%      **LAL:** 1      **INVERSIONS:** Weaker inversions overnight setting after 2100

**CAMP FORECAST:**                      **Strader ICP:** 50F                      **Sharps Creek Base Camp:** 50F

**EXTENDED OUTLOOK:** A trough begins to carve into the Northwest Monday and Tuesday transitioning into a cutoff low settling into Oregon Wednesday then drifting east Thursday and Friday. This will promote cooling and moistening through Wednesday followed by warming and drying Thursday and Friday. Winds will become increasingly breezy from the northwest Tuesday, north Wednesday, then northeast Thursday; Thursday looks to be the windiest. The system will bring a small threat for showers with low probabilities for wetting rains.

# FIRE BEHAVIOR FORECAST

<b>FORECAST NUMBER:</b> 18	<b>TYPE OF FIRE:</b> Wildfire
<b>FIRE NAME:</b> Umpqua Fires	<b>OPERATIONAL PERIOD:</b> 0700-1900, Sunday September 17, 2023
<b>DATE ISSUED:</b> Saturday September 16, 2023	<b>TIME ISSUED:</b> 19:30 Hours
<b>UNIT:</b> Umpqua National Forest	<b>SIGNED:</b> Sarah Bush – FBAN

## INPUTS

**WEATHER SUMMARY:** See Fire Weather Forecast for Details

### FUELS:

Fuels in the fire areas are primarily composed of *Timber Litter*, and *Timber Understory with moss/lichen present in most stands*. Mature conifer stands with western hemlock and Douglas fir present, generally have heavy surface fuel loading. 30 to 50+ year old second growth conifer stands contain needle litter and some down woody debris. Brush and reproduction present in areas with less dense canopies.

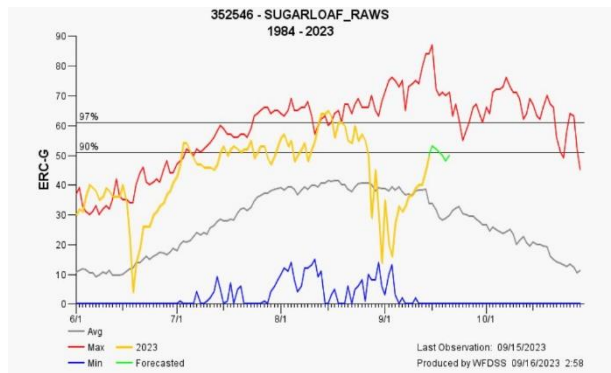
Dinner, Brice, Grizzly- Forecast -ERC 93<sup>rd</sup> percentile. Yesterday's obs. **1hr-6%, 10hr-7%, 100hr-11%, 1000hr-16%**  
Chilcoot & Ridge- Forecast -ERC 96<sup>th</sup> percentile. Yesterday's obs. **1hr-7%, 10hr-9%, 100hr-12%, 1000hr-16%**

## OUTPUTS

### FIRE BEHAVIOR GENERAL:

The combination of low humidities during the day and poor overnight recoveries extend the burn period for areas with active fire, especially in Divs J and S/Z. The hot and dry conditions continue over the fire areas. The 1000-hr fuel moisture is lower, making them more available to consume and preheat canopies. Expect lichen to be available to burn with potential for torching, due to RH hovering around 30%.

One-hour fuels are available to burn but have responded to the higher RH. The 10 and 100-hr fuels continue to lag and are more available to burn. Creeping and backing in surface fuels will be the most common surface fire behavior in areas with active burning.



### FIRE BEHAVIOR SPECIFIC:

#### Dinner, Brice, Grizzly, Chilcoot, and Ridge

**Chilcoot fire (Div J)** can expect up to 6' flame lengths and less than 6 ch/hr ROS where there is active fire. Fire spread potential will be largely dependent on location, aspect, and exposure/sheltering. Ten and 100-hr fuels in exposed stands will be significantly more available to carry fire in the peak of the day although at moderated ROS due to low wind speeds. Expect another day with similar fire activity on **Brice (Div A)** with backing fire behavior with the potential of isolated torching on both **Div J** and **A**.

**Ridge (Div W) and Dinner (Div D)** fires should experience minimal fire behavior and isolated to interior portions of the fire today. Expect backing and isolated torching with a moderate level of smoke production on **Grizzly (Div S/Z)** due to the dry environmental conditions and the ongoing suppression actions. Fire will back towards the Champion Ck Rd. If fire crosses Grizzly creek to the east, wind/slope alignment would push fire ESE towards the Noon Day Road, 2212 at 6ch/hr. The area would exhibit up to 6'FL without suppression actions.

**Spotting distance up to 0.2 mi, Probability of Ignition- 55% shaded; 85% unshaded**

**Initial Attack:** In the event resources respond to a new start, recognize that fuels, topography, and conditions may be different than areas you have previously worked in.

**AIR OPERATIONS:** Inversion will limit ability to fly on Brice and Grizzly until early afternoon.

## SAFETY

Excellent day to review the back cover of your IRPG – ensure the STANDARD FIREFIGHTING ORDERS are followed, and WATCHOUT SITUATIONS are understood. Lots of fresh faces on the fire – share what you have observed.

<b>AIR OPERATIONS SUMMARY 220</b>	Prepared/Approved: Doug Ledgerwood	Prepared: 9/16/2023	Prepared Time: 1800 hrs.
<b>1. INCIDENT NAME: UMPQUA FIRES</b>	<b>2. OPERATIONAL PERIOD</b> 09/17/2023	<b>START TIME:</b> 0700	<b>SUNRISE:</b> 0654
		<b>END TIME:</b> 1900	<b>SUNSET:</b> 1918

**3. REMARKS** (Safety Notes, Hazards, Air Operations Special Equipment, etc.).  
**Smoky conditions \* Steep terrain \* Shadow effects**  
**Only use approved dip sites. Do not cross contaminate water sources without sanitizing bucket/snorkel. All GPS data to be collected in DEGREES MINUTES, DECIMAL MINUTES.**  
 Avoid foam within 300' of waterways or bodies of water. Notify AOBD if this is not achieved  
 Aircraft costs daily to: [2023.chilcoot.finance@firenet.gov](mailto:2023.chilcoot.finance@firenet.gov) and cc to [2023.chilcoot.airops@firenet.gov](mailto:2023.chilcoot.airops@firenet.gov)

**4. READY ALERT AIRCRAFT:**  
**N234BH** Yellowstone Short Haul:  
 @Grants Pass.  
**N38HX** Teton Short Haul @  
 Walterville.

**5. TFR: #3/9930 (A30) North**  
 Freq 121.3750  
 Surface to 9000ft MSL  
 Operational 1500-0400 UTC  
**TFR: #3/7750 (A51) South**  
 Freq:132.525  
 Surface to 8500 MSL  
 Operational 1630-0400 UTC

PERSONNEL	NAME	PHONE #	AM	FM
<b>8. FIXED-WING Avail/ Type/ Make-Model/ N#/ Base</b>				
<i>AIRTANKERS: ORDER THRU ATGS</i>				
<b>ATGS – order through Roseburg Dispatch</b>				
Landing Sites on Fire: See pilot map Layng Cr Helispot: 43°42.698'N X 122°42.114'W 1224ft Cottage Grove S61: 43°48.246'N X 123°1.923'W 641ft Glide Helibase 43° 18.922' X 123° 4.415'				
Tank Dips: See Pilot Map				
<b>LAKE DIPS:</b> Gertrude LK 43°35.698'N X 122°32.452'W 3990 ft Crawfish Lk 43°37.502'N X 122°42.222'W 4794 ft Crystal Lk 43°35.602 N X 122°38.655 W 4650 ft Elephant Lake 43°35.742 X 122°39.237 W 5126 ft				
<b>7. FREQUENCIES</b>				
	A/A TFR and Primary North	121.3750		
	A/G Primary (A4) North		165.9875	
	A/G Secondary (A5) North		173.5000	
	A/A TFR and Primary South	132.525		
	A/G Primary (A6) South		167.1500	
	A/G Secondary (A-7) South		170.2625	
	Deck Tone-156.7(TX/RX)		163.1000	
	IA A/G 49 USFS		168.0375	
	IA A/G 81 USFS		166.9500	
	VME D29 Tone 156.7(TX/RX)		155.3475	
	CTAF		122.8	
	Air Guard Tone 110.9 (TX)		168.6250	
<b>6. PERSONNEL</b>				
	Glide Helibase			
AOBD	Doug Ledgerwood	541-852-0633		
ASGS	Kevin Kozak	360-280-6714		
HEBM	Matt Quezada	760-379-6995		
HEBM(t)	Mario Melendez	661-912-8235		
ORRIC	Aircraft Desk	541-957-3325		
UAO	Jim Dotson	307-413-2024		
For IA: send flight strip to <a href="mailto:matthew.quezada@usda.gov">matthew.quezada@usda.gov</a> HEBM(t) <a href="mailto:Mario.melendez@usda.gov">Mario.melendez@usda.gov</a>				

FAA N#	T Y	MAKE/ MODEL	BASE	START	AVAIL	REMARKS	FAA N#	T Y	MAKE/ MODEL	BASE	START	AVAIL	REMARKS
N274TH (A-9)	1	UH-60	Glide	0700	0800		32HX (A-19)	3	AS 350	Glide	0700	0800	11 personnel
526MW (A-10)	1	KMAX	Glide	0700	0800								
N357KA (A-57)	1	KMAX	Glide	0900	0930								
N933CH(A-39)	2	Bell 205 A1	Glide	0700	0800	15 personnel	NR474A	3	UR-31(A-26)	Glide	0700		Ryan Gregg Mngr: 360-852-2296
H377PA(A-20)	2	Bell 212	Glide	0700	0800	8 personnel							

# SAFETY MESSAGE

Positive attitudes have positive influence on safety

Incident: <b>Grizzly/Chilcoot/Ridge/Dinner/Brice</b>	Date: <b>9/17/2023</b> <b>24 Hr.</b>
---	--------------------------------------

**Major Hazards and Risks:**

- \*Snags- Maintain Situational awareness in burned areas for snags and fire weakened green trees.
- \*Heat illness – Dehydration, over-exertion, high temperatures, poor diet, and lack of rest. Stay hydrated.
- \*Air Operations – Flight Hazards, bucket drops, back hauls, Communications, is the mission necessary?
- \*Transportation – Fatigue, complacency, driving too fast, narrow, blind corners, brushy & dusty Roads, increased traffic due to the Pow Wow.
- \*Poison Oak- Usually present here below 3000 feet, exposed, southern aspect, rocky terrain.

## What is Situational Awareness (SA)?

Situational Awareness refers to the degree of accuracy by which one's perception of his current environment mirrors reality (**knowing what is going on around you**).

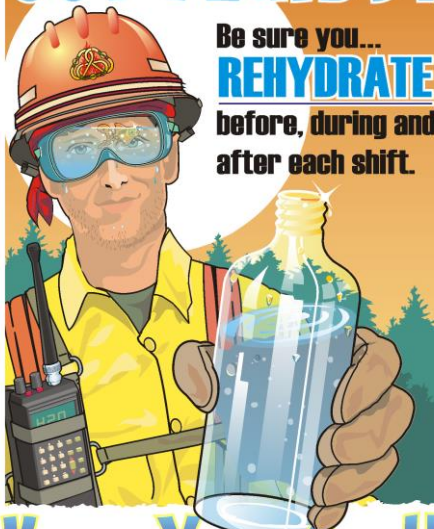
<p><b>PERCEPTION VERSUS REALITY</b></p> <ul style="list-style-type: none"> <li>● View of Situation</li> <li>● Incoming information</li> <li>● Expectations &amp; Biases</li> <li>● Incoming Information versus Expectations</li> </ul>	<p><b>FACTORS THAT REDUCE SITUATIONAL AWARENESS (See IRPG xi)</b></p> <ul style="list-style-type: none"> <li>● Insufficient Communication</li> <li>● Fatigue / Stress, Invulnerable, Anti-Authority</li> <li>● Task Overload</li> <li>● Task Under load</li> <li>● Group Mindset, Macho, Complacent</li> <li>● "Press on Regardless" Philosophy</li> <li>● Degraded Operating Conditions</li> </ul>
--	---

## Watch Out Situation of the Day

<p><b>Bees</b></p>  <p>•Bumbly boi</p> <p>•Can sting once then dies</p> <p>•Fuzzy <del>monsters</del> kinda cute</p> <p>Haha bumbly boi</p>	<p><b>Wasps</b></p>  <p>•Spawn of Satan</p> <p>•Will sting you for no reason cuz they're <del>monsters</del> <b>JERKS</b></p> <p>•No loving god would create these monsters</p>
--	--

# GOT FLUIDS?

Be sure you... **REHYDRATE** before, during and after each shift.



# Keep Your Cool!

With a mix of water & electrolyte/carbo sports drink.

**Safety & Health Working Team**

www.aawcg.gov/teams/shwt/index2.htm

**Safety Officers: Risdal, Theall, Augustine, Johnson, McConnel, Goyette**



# LOGISTICS PAGE

## **Strader ICP:**

Email orders to [2023.chilcoot.ordering@firenet.gov](mailto:2023.chilcoot.ordering@firenet.gov)

Location	373 French Creek Road Glide OR, 97443
Supply	Hours: 0600 - 2130
Ground Support	Hours: 0630 - 2200
Fuel Truck	Hours: 0630 - 2100
Weed Wash	Hours: 0700 - 2000
Meals	Hours: Breakfast – 0600 - 0930 & Dinner – 1800 - 2130
Laundry	Hours: 0500 - 2200
Showers	Hours: 0500 - 1200 & 1400-2200

## **Sharps Creek Base Camp:**

Email orders to [2023.dinner.ordering@firenet.gov](mailto:2023.dinner.ordering@firenet.gov)

Location	73792 Sharps Creek Road Dorena OR, 97434
Supply	Hours: 0600 - 2130
Ground Support	Hours: 0600 - 2200
Fuel Truck	Hours: 0600 - 2200
Weed Wash	Hours: 0700 - 2000
Meals	Hours: Breakfast – 0600 - 0830 & Dinner – 1700 - 2030
Laundry	Hours: 0600 -1300 & 1700 - 2200
Showers	Hours: 0500 - 1200 & 1400 - 2200

### **1-Mile Hose Kit for PNW Team 6**

*Please note this is what will be sent out with an order for a 1- mile hose kit from supply with Team 6.*

NFES	QUANTITY	ISSUE	DESCRIPTION
1239	50	LG	1 1/2" Hose
1238	25	LG	1" Hose
1016	50	LG	3/4" Hose
0010	25	EA	Reducers 1 1/2" to 1"
0733	20	EA	Reducers 1" to 3/4"
0231	25	EA	1 1/2" Gated Wyes
0259	20	EA	1" Gated Wyes
0904	25	EA	3/4" Gated Wyes
0024	25	EA	Forrester Nozzles
0136	25	EA	Garden Nozzle
0738	25	EA	3/4" Shut Off
0664	2	EA	Fold a Tank 1500 gal
3870	2	EA	Mark III Kits
0606	3	EA	Can, safety
7724	3	EA	Oil, 2 stroke mix
0805	3	EA	Tags, 2 stroke
0148	2	EA	Pump, Mk III

# INCIDENT RADIO COMMUNICATIONS PLAN (ICS 205)

Controlled Unclassified Information //Basic

<b>1. Incident Name:</b>		<b>2. Date Prepared:</b>		<b>3. Operational Period:</b>	
Umpqua Fires- Cottage Grove		Date: 09/16/23		Date/Time From: 09/17/23 0700 HRS	
				Date/Time To: 09/17/23 1900 HRS	

Zone Group	Ch #	Function	Channel Name/Trunked Radio System Talk Group	Assignment	RX Freq	RX Tone/NAC	TX Freq	TX Tone/NAC	Mode (A.O. 0<M)	Remarks
	1	TACTICAL	TAC 1	DIV A	168.0500	100.0	168.0500	100.0	A	DIVISION ALPHA TACTICAL-BRICE FIRE
	2	TACTICAL	TAC 2	DIV C	168.2000	100.0	168.2000	100.0	A	DIVISION CHARLIE TACTICAL-BRICE FIRE
	3	TACTICAL	TAC 3	DIV D	168.6000	100.0	168.6000	100.0	A	DIVISION DELTA TACTICAL-DINNER FIRE
	4	TACTICAL	TAC 4	DIV S	166.7250	100.0	166.7250	100.0	A	DIVISION SIERRA/ZULU TACTICAL-GRIZZLY FIRE
	5	TACTICAL	TAC 5	CURRENTLY UNASSIGNED	166.7750	100.0	166.7750	100.0	A	CURRENTLY UNASSIGNED
	6	TACTICAL	TAC 6	CURRENTLY UNASSIGNED	168.2500	100.0	168.2500	100.0	A	CURRENTLY UNASSIGNED
	7	COMMAND	CMD 7	COMMAND	170.0625	100.0	162.4375	100.0	A	COMMAND 7-LOCATED ON FAIRVIEW LOOKOUT
	8	COMMAND	CMD 8	COMMAND	169.6125	100.0	162.5125	100.0	A	COMMAND 8- CULP CREEK/SHARPS CAMP
	9	EMPTY	EMPTY	EMPTY						EMPTY CHANNEL/FUTURE EXPANSION
	10	FOREST REPEATER	FAIRVIEW LO	ALL RESOURCES	170.5500	103.5	164.8000	173.8	A	UPF N FAIRVIEW REPEATER
	11	TACTICAL	ODF RED	IA ONLY	151.3400	156.7	151.3400	156.7	A	INITIAL ATTACK USE ONLY
	12	AIR OPS	A/G 49	IA ONLY	168.0375	NONE	168.0375	NONE	A	INITIAL ATTACK USE ONLY
	13	AIR TO GROUND	A/G PRI	AIR TO GROUND PRIMARY	165.9875	NONE	165.9875	NONE	A	AIR TO GROUND OPERATIONS PRIMARY
	14	AIR TO GROUND	A/G SEC	AIR TO GROUND SECONDARY	173.5000	NONE	173.5000	NONE	A	AIR TO GROUND OPERATIONS SECONDARY
	15	AIR TO GROUND	V/MED29	MEDICAL	155.3475	156.7	155.3475	156.7	A	MEDICAL E/VACUATION ONLY
	16	AIR GUARD	AIR GUARD	ALL DIVS	168.6250	NONE	168.6250	110.9	A	EMERGENCY USE ON LY

**5. Special Instructions:**

**6.Prepared By** (Communications Unit Leader) Name: Troy McMillan  
**Signature:** TROY MCMILLAN  
 Date/Time: 09/16/23 1748 HRS

Communications staffed 0700-1900 hours. Phone: (949) 648-1591  
**IAP Page**

# INCIDENT RADIO COMMUNICATIONS PLAN (ICS 205)

Controlled Unclassified Information //Basic

<b>1. Incident Name:</b>	<b>2. Date Prepared:</b>	<b>3. Operational Period:</b>	
UMPQUA FIRES-NORTH UMPQUA	Date: 09/16/23	Date/Time From: 09/17/23 0700 HRS	Date/Time To: 09/17/23 1900 HRS

4. Basie Radio Channel Use:												
Zone Group	Ch #	Function	Channel Name/Trunked Radio System Talk Group	Assignment	RX Freq	RX Tone/NAC	TX Freq	TX Tone/NAC	Mode (A.O. 0<M)	Remarks		
	1	TACTICAL	TAC 1	DIV J	168.0500	167.9	168.0500	167.9	A	DIVISION JULIET TACTICAL		
	2	TACTICAL	TAC 2	DIV E	168.2000	167.9	168.2000	167.9	A	DIVISION ECHO TACTICAL		
	3	TACTICAL	TAC 3	DIV H	168.6000	167.9	168.6000	167.9	A	DIVISION HOTEL TACTICAL		
	4	TACTICAL	TAC 4	ROAD MAINTENANCE GROUP	166.7250	167.9	166.7250	167.9	A	ROAD MAINTENANCE GROUP TACTICAL		
	5	TACTICAL	TAC 5	DIV W	166.7750	167.9	166.7750	167.9	A	DIVISION WHISKEY TACTICAL		
	6	TACTICAL	TAC 6	CURRENTLY UNASSIGNED	168.2500	167.9	168.2500	167.9	A	CURRENTLY UNASSIGNED		
	7	COMMAND	CMD 7	COMMAND	169.7500	167.9	167.1000	167.9	A	COMMAND 7-LOCATED ON SCOTT MOUNTAIN		
	8	COMMAND	CMD 8	COMMAND	173.7125	167.9	162.6000	167.9	A	COMMAND 8- LOCATED ON PIG IRON LOOKOUT		
	9	COMMAND	CMD 9	COMMAND	173.6000	167.9	169.4625	167.9	A	COMMAND 9- LOCATED ON CHILCOOT MOUNTAIN		
	10	COMMAND	CMD 10	COMMAND	169.8375	167.9	162.4625	167.9	A	COMMAND 10- LOCATED ON LOOKOUT MOUNTAIN		
	11	FOREST REPEATER	CHILCOOT	ALL RESOURCES	170.5500	103.5	164.8000	192.8	A	UMF N CHILCOOT REPEATER		
	12	FOREST REPEATER	PIG IRON	ALL RESOURCES	171.4125	103.5	166.0000	179.9	A	UMF N PIG IRON REPEATER		
	13	AIR TO GROUND	A/G PRI	AIR TO GROUND PRIMARY	167.1500	NONE	167.1500	NONE	A	AIR TO GROUND OPERATIONS, PRIMARY		
	14	AIR TO GROUND	A/G SEC	AIR TO GROUND SECONDARY	170.2625	NONE	170.2625		A	AIR TO GROUND OPERATIONS, SECONDARY		
	15	AIR TO GROUND	VMED29	MEDICAL	155.3475	156.7	155.3475	156.7	A	MEDICAL USE ONLY		
	16	AIR GUARD	AIR GUARD	ALL DIVS	168.6250	NONE	168.6250	110.9	A	EMERGENCY USE ON LY		

<b>5. Special Instructions:</b>	

<b>6.Prepared By</b>	<b>Signature:</b>
(Communications Unit Leader)	<b>TROY MCMILLAN</b>
Name: Troy McMillan	Digitally signed by TROY MCMILLAN Date: 2023.09.16 16:47:24 -0600
Communications staffed 0600-2200 hours. Phone: (949) 648-1591	Date/Time: 09/16/23 1748 HRS



## FINANCE

Note: On the TOP of your CTR or ST please indicate Fire you were ordered on. Add in remarks section on CTR or ST Fire name you worked on.

### Finance Email:

**2023.dinner.finance@firenet.gov**

**2023.chilcoot.finance@firenet.gov**

### FINANCE CHECK IN:

**2023.dinner.finance@firenet.gov**

**2023.chilcoot.finance@firenet.gov**



CTR'S

Shift Ticket



### Required Financial Documents

Agency Overhead	Agency ADs / EFFs	Contract / Agency Crews	Cooperators
Resource Order	Resource Order	Resource Order	Resource Order
Signed CTRs	Casual Hire Form Signed CTRs	Manifest Agreement / Contract Schedule of Items Inspections Signed CTRs	Agreement Signed STs / CTRs

**PLEASE SEND CTR/SHIFT TICKET ELECTRONICALLY**  
**(In EMAIL subject: EX: TIME or CTR or SHIFT TICKET, RESOURCE ORDER, CASUAL HIRE FORM**  
**AND FIRST, LAST NAME)**  
**AND Fire Worked**

**Finance can be reached at:**

**Contractors: 971-713-0374; Overhead: 971-727-5250**

**COMP/CLAIMS – 971-245-0248**

**\*NOTE: If you are not able to submit an electronic version of your CTR or Shift Ticket. Please drop a hard copy in the Finance box. Make sure that a phone number is in the remarks section.**

# Information Section

Do you or the public need to reach the PIOs?

Phone: (541) 900-5862

Emails: Brice Creek/Dinner/Grizzly: [2023.dinner@firenet.gov](mailto:2023.dinner@firenet.gov)

Chilcoot/Ridge: [2023.chilcoot@firenet.gov](mailto:2023.chilcoot@firenet.gov)

Please email us your photos! (And don't forget your PPE 😊)



Chilcoot and Ridge Fires Information



Brice, Dinner, and Grizzly Fires Information

Scan the codes above to access links to each of the official sources of information on all five of the Umpqua Fires—from InciWeb to Facebook to email addresses, it's all there!

## Sharps Creek (Dorena PO)

Dorena Post Office: C/O (Your Name)  
75694 Wicks Road  
Dorena, OR 97434



### Notes on Dorena PO pick-up:

Persons picking up the mail must present ID for their mail.

Business hours:

9 AM- 1 PM Monday -Friday

11 AM- 12 PM Saturday

(Closed Sundays)

## Strader ICP

(North Umpqua Ranger District):

### Address your mail to:

C/O (Chilcoot Fire, Your Name, Resource Number)

North Umpqua Ranger District

18782 North Umpqua Highway

Glide, OR 97443

### Notes on Strader pickup:

PIOs are checking mail daily; come visit our PIO trailer to get your items!



**Call or visit us if you've lost something!**  
**We have a PIO shops in both Glide and Sharps Creek**



## Human Resource Message

**Umpqua Fires  
September 17, 2023**

### **Transitioning - It's mid-September, how are you preparing for the off season?**

#### **Discussion Guide**

People returning from all hazard missions, particularly missions that are characterized by arduous work, and high or chronic stress, can experience transition discomfort. They can have increased symptoms of anxiety, post-traumatic stress disorder, and/or depression. Generally, first responders, humanitarian aid and disaster relief workers demonstrate considerable resilience and adapt to the stressful environments, but elevated and chronic stress can lead to decreases in behavioral health. Effective pre-deployment briefings and understanding common responses can increase confidence and develop a responder's ability to cope with highly stressful environments and transition from all hazard missions in a more comfortable and healthful way.

#### **Common Experiences**

- Shifting Social Conditions – Transition from mission driven and transactional communication to talking with family and friends.
- Changes in daily experience which drives feelings of isolation or belonging.
- Disruptions to work/life norms.
- Re-entry into needs and relationships at home.

#### **Leading Your Team –**

The common goal of the discussion is to understand and support healthy transitions from a fire assignment and to explore what your team needs to make transitions successful. You can host a discussion with your team by asking some of these questions.

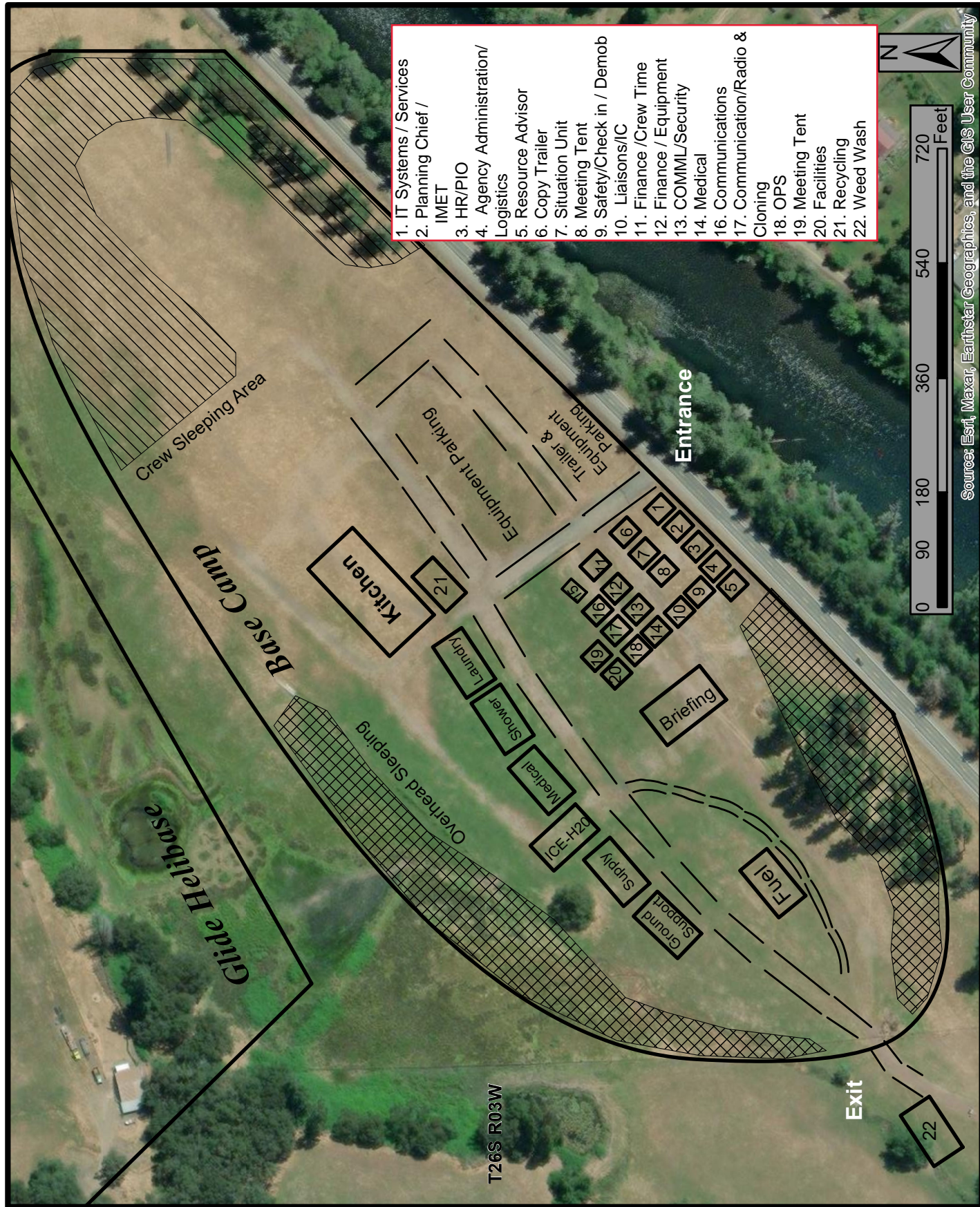
- What are some common transition experiences for this team?
- What support does each person value most for assisting them as they transition off an incident?
- What are your expectations for yourself, your family, your supervisor, and the organization? Mutual understanding of needs and interests are important.
- What is the difference between transitions between assignments and the transition at the end of the season?
- What do you want to do as a team as you head off into the winter season?

For Human Resources help contact  
Audrey Matsumonji 503-575-8547  
K.C. Briggs 541-954-6520

For more information on resetting at the end of the season or between assignments follow this QR code to access the complete guide.



# Chilcoot ICP Basecamp Map



1. IT Systems / Services
2. Planning Chief / IMET
3. HR/PIO
4. Agency Administration/ Logistics
5. Resource Advisor
6. Copy Trailer
7. Situation Unit
8. Meeting Tent
9. Safety/Check in / Demob
10. Liaisons/IC
11. Finance /Crew Time
12. Finance / Equipment
13. COMML/Security
14. Medical
16. Communications
17. Communication/Radio & Cloning
18. OPS
19. Meeting Tent
20. Facilities
21. Recycling
22. Weed Wash



Source: Esri, Maxar, Earthstar Geographics, and the GIS User Community

# Extensions and Crew Swaps – NW 6

This is the Team Standard Operating procedure based on national policy

Resources may be demobed regardless of crew status if it is no longer needed

O Numbers - Resources ordered as 'O' numbers cannot swap crew members (except some medical resources). They can extend an additional 7 or 14 days, depending on their availability and the needs of the incident. See Plans for an extension form.

Contract Crews are generally not extended unless replacement resources are scarce. Hand crews may swap crew members if needed, the IMT must be notified through the crew swap form through the QR code

## Contracted Fireline Equipment

- Contract equipment may stay on the incident until is no longer needed, a maximum dollar amount is reached, or replacement operators cannot be provided
- It is the responsibility of the Contract Owner to track their workers and ensure the workers maintain proper work/rest
- Non-fireline equipment personnel (like hand wash stations) are not tracked other than a current, onsite contact
- The IMT will assume contracted equipment will swap crew members as necessary to provide adequate rest for their workers
- If replacement personnel cannot be provided, this information must be documented on an ICS-213, provided to Operations and Plans at least 72 hours prior to the 14<sup>th</sup> workday, and the resource will be demobed after 14 shifts. Or, an extension form may be completed under certain circumstances, based on operational need, see Plans for this form.
- Crew swaps/replacements **MUST** be tracked through the provided QR code form (or a previously obtained form from a past IMT) as soon as known and/or at least by 1800 the day prior to the change.
- We prefer all members of a resource swap at once, if possible. However, you will need to fill out the QR code for each individual member.
- Replacement workers must provide proof of current annual training upon request
- The IMT will **NOT** track a last work day for these resources in the IAP unless
  - It was determined to be excess to the needs of the incident and will demob
  - A resource was unable to provide replacement workers and will demob

Please contact Plans after the briefing, at their office at either camp, or at Check-in if you have questions or wish to understand how your last work day/demob date was determined.

Crew Swap Form  
Is a Button on the  
Main Page:





# **CHECK-IN PROCESS - ALL RESOURCES**

**Grizzly (OR-UPF-000341) Dinner (OR-UPF-000357) Brice Creek (OR-UPF-000359)  
Chilcoot (OR-UPF-000345) Ridge (OR-UPF-000346)**

**STEP 1. Scan the QR code to fill out and submit the online check-in form.**

- Have your resource order ready as many questions reference it.



**STEP 2. Email your MANIFEST (if appropriate) depending on what incident you are assigned to. Include your request number in the subject line (e.g, E-118, O-48).**

- If you are assigned to the Grizzly, Dinner or Brice Creek incidents, email to [2023.dinner.checkin@firenet.gov](mailto:2023.dinner.checkin@firenet.gov)
- If you are assigned to the Chilcoot or Ridge incidents, email to [2023.chilcoot.checkin@firenet.gov](mailto:2023.chilcoot.checkin@firenet.gov)

**STEP 3. See Finance page of IAP for further instructions on how to check in with finance.**

**STEP 4. Complete vehicle inspection as instructed in your resource order, including contract inspection as needed.**

**If you have any issues, please contact Check-in at (208) 891-6286 or by email at [2023.chilcoot.checkin@firenet.gov](mailto:2023.chilcoot.checkin@firenet.gov) or [2023.dinner.checkin@firenet.gov](mailto:2023.dinner.checkin@firenet.gov)**

## Demob List for Sunday 09/17/2023

<b>DINNER – BRICE CREEK - GRIZZLY FIRES</b>				
E-39	0700	ENG4	STERLING	DINNER
E-2	0800	VUTV	TOP GUN	GRIZZLY
E-86	0800	UTV	TOP GUN	DINNER
<b>CHILCOOT – RIDGE FIRES</b>				
E-10001	0700	ENG5	CAS	CHILCOOT
E-10003	0715	ENG5	ID E2351	CHILCOOT
E-10004	0730	ENG6	ID SJS E3261	CHILCOOT
O-177	0730	EMTF	KIME, ANASTASIA	CHILCOOT
O-182	0730	DIVS	ASHCRAFT, JOHN	CHILCOOT
O-199	0745	HEQB	MATHESON, RYAN	CHILCOOT
O-10005	0800	TFLD	VORE, ERIC	CHILCOOT
O-273	1400	HRSP	BRIGGS, KIMBERLY	CHILCOOT
O-174	1800	EMPF	GIFFORD, GREGGORY	CHILCOOT

## Demob List for Monday 09/18/2023

<b>DINNER – BRICE CREEK - GRIZZLY FIRES</b>				
O-43	0800	EQPM	RHUE, WILLIAM	DINNER
O-103	1800	SEC2	SMITH, FRANCISCO	DINNER
<b>CHILCOOT - RIDGE FIRES</b>				
O-204	0800	HRSP	BUCHHOLZ, TODD	CHILCOOT
O-208	0830	BCMG	AXE, MATHEW	CHILCOOT
O-67	2000	EQPM	CONLON, JAMES	CHILCOOT

## Demob List for Tuesday 09/19/2023

<b>DINNER – BRICE CREEK - GRIZZLY FIRES</b>				
O-36	0800	SOFC	MCCONNELL, RICHARD	DINNER
O-125	0900	SEC2	MITCHELL, JEFFREY	DINNER
<b>CHILCOOT - RIDGE FIRES</b>				
O-57	0700	EMTF	MARTINEZ, MELISSA	CHILCOOT
O-58	0715	EMTF	CAUDILL, SOREN	CHILCOOT
O-62	0730	EMPF	KAISER, JEFFREY	CHILCOOT
O-64	0745	EMPF	DOBSON, RICH	CHILCOOT
O-67	0800	EQPM	CONLON, JAMES	CHILCOOT
O-184	0815	HEQB	NORTON, SHILOW	CHILCOOT
O-209	0830	WFM1	STORM PEAK	CHILCOOT
O-210	0845	MEDL	NOKES, JOHN	CHILCOOT
O-217	0900	SECG	PERRY, MICHAEL	CHILCOOT
O-218	0915	FFT2	GROS, JACOB	CHILCOOT

# Umpqua Fires

## Demob Check-Out Instruction Form

Pick up Demob Check-Out form at BRIEFING (IAP) or PLANNING to begin Process

RO # \_\_\_\_\_ Resource Name \_\_\_\_\_ Fire: \_\_\_\_\_ Date: \_\_\_\_\_

### Initial

Follow these steps in the order below:

- \_\_\_\_\_ 1. **Weed Wash** – ALL line resources that went off-road will need to go through a Weed Wash in your specific fire location. **If not needed, proceed to step 2.**
- \_\_\_\_\_ 2. **Ground support** – Contractors must stop to sign their release inspection. The inspection is optional for agency resources. **Agency resources proceed to step 3.**
- \_\_\_\_\_ 3. **Supply** – Return any items you checked out. All units must have an initial from SUPPLY confirming all equipment has been returned.
- \_\_\_\_\_ 4. **Communications** – Return any items you checked out. All units must have an initial from COMMUNICATIONS confirming all radio equipment has been returned.
- \_\_\_\_\_ 5. **Finance** – Proceed to finance to receive your final timesheet. Having ALL your times turned in and up to date will GREATLY speed up the process.
- \_\_\_\_\_ 6. **Demob – Final step.** Return completed Demob Check-Out form and any Documentation to Demob/Check-in. Documentation can also be emailed to 2023.chilcoot.docs@firenet.gov Contact Demob at 509-432-6143 with your estimated time of departure, arrival time and destination. You will not be released from the incident with Dispatch until this is completed.

### ALL AIR TRAVELERS

Submit your request 72 hours prior to flight date through the QR Code on the IAP Cover. Call 509-432-6143 for any questions or assistance.

### NIGHT SHIFT PERSONNEL

All night shift personnel coming off the line will be required to meet work/rest requirements before completing the Demob process.

### EXTENSIONS AND CREW SWAPS

All extension/crew swap processes should be done at least 48 hours before your last working day to help facilitate Operational resources and the Demob process.

**Division/Group Assignment List (ICS 204 WF)**  
**Controlled Unclassified Information//Basic**

<b>1. Incident Name:</b>				<b>3.</b>		
UMPQUA FIRES				<b>Branch:</b>	<b>Division/Group</b>	
<b>2. Operational Period: DAY</b>						
Date/Time From: 09/17/2023 0700      SUN		Date/Time To: 09/17/2023 1900      SUN		<b>BRICE CREEK A/C</b>		
<b>4. Operations Personnel</b>						
<b>OPERATIONS CHIEF</b>		DAN MARTIN LARAE GUILLORY (T)		<b>BRANCH DIRECTOR</b>		
<b>SAFETY OFFICERS</b>		ERIC RISDAL SHANE THEALL		<b>DIVISION/GROUP SUPERVISOR</b> DOUG CATES		
<b>5. Resources Assigned this Period</b>						
Strike Team / Task Force / Resource Designator		LWD	Leader	Number Persons	Drop Off PT./Time	Pick Up PT./Time
O-240.32 SOF2		09/26	AL AUGUSTINE	1	SHARPS CREEK BASECAMP/0700	SHARPS CREEK BASECAMP/1900
O-4 TFLD		09/19	JACK MASTERS	1	SHARPS CREEK BASE CAMP/0700	SHARPS CREEK BASE CAMP/1900
O-16 TFLD (T)		09/30	BRIAN WHETSLER	1	SHARPS CREEK BASE CAMP/0700	SHARPS CREEK BASE CAMP/1900
O-240.69 TFLD (T)		09/25	MICHEAL DAKE	1	SHARPS CREEK BASE CAMP/0700	SHARPS CREEK BASE CAMP/1900
O-14 HEQB		09/29	ETHAN REDDICK	1	SHARPS CREEK BASE CAMP/0700	SHARPS CREEK BASE CAMP/1900
C-17 CR2I VALE SRV #12		09/23	JULIAN I JACOBO	24	SHARPS CREEK BASE CAMP/0700	SHARPS CREEK BASE CAMP/1900
C-18 CR2I CENTRAL OREGON #05		09/24	NICHOLAS FOEY	20	SHARPS CREEK BASE CAMP/0700	SHARPS CREEK BASE CAMP/1900
C-55 CRW2 IRON MOUNTAIN		09/29	FRANSCISCO CISNEROS	20	SHARPS CREEK BASE CAMP/0700	SHARPS CREEK BASE CAMP/1900
E-39 ENG4 STERLING			BRIAN MOORE	3	SHARPS CREEK BASE CAMP/0700	SHARPS CREEK BASE CAMP/1900
E-10 ENG6 THREE STRIPES			TIMOTHY PEARSON	3	SHARPS CREEK BASE CAMP/0700	SHARPS CREEK BASE CAMP/1900
E-25 ENG6 NORTH PACIFIC			PORFIRIO SERVIN	3	SHARPS CREEK BASE CAMP/0700	SHARPS CREEK BASE CAMP/1900
E-26 ENG6 FIRST STRIKE			HOLDEN HILLIKER	3	SHARPS CREEK BASE CAMP/0700	SHARPS CREEK BASE CAMP/1900
E-194 ENG6 DIAMOND FIRE			DANIEL EMEL	3	SHARPS CREEK BASE CAMP/0700	SHARPS CREEK BASE CAMP/1900
E-2 WTS2 RHY-DEM			RUSSEL ROBINSON	1	SHARPS CREEK BASE CAMP/0700	SHARPS CREEK BASE CAMP/1900
E-18 WTS2 IRELAND BROTHERS			ERIC ARASMITH	1	SHARPS CREEK BASE CAMP/0700	SHARPS CREEK BASE CAMP/1900
<b>8. Division/Group Communication Summary</b>						
Function	Channel	RX Frequency N/W	RX Tone/NAC	TX Frequency N/W	TX Tone/NAC	Mode
TACTICAL	TAC 1	168.0500	100.0	168.0500	100.0	A
COMMAND	CMD 7	170.0625	100.0	162.4375	100.0	A
COMMAND	CMD 8	169.6125	100.0	162.5125	100.0	A
AIR TO GROUND	A/G PRI	165.9875		165.9875		A
AIR TO GROUND	A/G SEC	173.5000		173.5000		A
AIR GUARD	AIR GUARD	168.6250		168.6250	110.9	A
<b>9. Prepared By (Resource Unit Leader)</b>			<b>Approved By (Planning Section Chief)</b>		<b>Date</b>	<b>Time</b>
JAMES MAHAFFY RESL (T)			KRISANN KOSEL		09/16/2023	2200

**Division/Group Assignment List (ICS 204 WF)**  
**Controlled Unclassified Information//Basic**

<b>1. Incident Name:</b>			<b>3.</b>			
UMPQUA FIRES			<b>Branch:</b>		<b>Division/Group</b>	
<b>2. Operational Period:</b> DAY			BRICE CREEK A/C			
Date/Time From: 09/17/2023 0700	SUN	Date/Time To: 09/17/2023 1900				
<b>4. Operations Personnel</b>						
<b>OPERATIONS CHIEF</b>		DAN MARTIN LARAE GUILLORY (T)		<b>BRANCH DIRECTOR</b>		
<b>SAFETY OFFICERS</b>		ERIC RISDAL SHANE THEALL		<b>DIVISION/GROUP SUPERVISOR</b>		DOUG CATES
<b>5. Resources Assigned this Period</b>						
Strike Team / Task Force / Resource Designator		LWD	Leader	Number Persons	Drop Off PT./Time	Pick Up PT./Time
E-10000 DZR2 R & L			CHAD SCOFIELD	2	SHARPS CREEK BASE CAMP/0700	SHARPS CREEK BASE CAMP/1900
E-12 CHP2 SALAMANDER			ZACH UNDERWOOD	3	SHARPS CREEK BASE CAMP/0700	SHARPS CREEK BASE CAMP/1900
E-1 VUTV TOP GUN					SHARPS CREEK BASE CAMP/0700	SHARPS CREEK BASE CAMP/1900
E-16 VUTV TOP GUN					SHARPS CREEK BASE CAMP/0700	SHARPS CREEK BASE CAMP/1900
O-129 REAF		09/23	JEDIDIAH HANCOCK	1	SHARPS CREEK BASE CAMP/0700	SHARPS CREEK BASE CAMP/1900
O-29 REMS BEYOND THE EDGE (REMS 1)		09/26	JOE DECKER	4	SHARPS CREEK BASE CAMP/0700	SHARPS CREEK BASE CAMP/1900
E-193 AMB2 FRONT LINE (AMB 55)		09/29	LANCE PUIG	2	SHARPS CREEK BASE CAMP/0700	SHARPS CREEK BASE CAMP/1900
<b>6. Control Operations/Work Assignments:</b>						
<p>Task: Continue to hold, secure, and mop-up control lines. Monitor conditions in preparation to implement firing plan in direct areas. Complete contingency line preparation.</p> <p>Purpose: Prevent fire from impacting values at risk, including communities to the west, commercial timberlands and T&amp;E habitat.</p> <p>End State: Fire is kept north of 22 RD, south of the 2216 RD, and east of the 732 RD. To protect the values at risk through the remainder of the fire season.</p>						
<b>7. Special Instructions:</b>						
<ul style="list-style-type: none"> <li>All resources assigned to this division will add BRICE CREEK FIRE to all CTR and SHIFT TICKETS, OR-UPF-000359 P6QLI4. Ensure signage is adequate at all drop points.</li> <li>Add signage to all major intersections to help with locating drop points.</li> </ul>						
<b>8. Division/Group Communication Summary</b>						
Function	Channel	RX Frequency N/W	RX Tone/NAC	TX Frequency N/W	TX Tone/NAC	Mode
TACTICAL	TAC 1	168.0500	100.0	168.0500	100.0	A
COMMAND	CMD 7	170.0625	100.0	162.4375	100.0	A
COMMAND	CMD 8	169.6125	100.0	162.5125	100.0	A
AIR TO GROUND	A/G PRI	165.9875		165.9875		A
AIR TO GROUND	A/G SEC	173.5000		173.5000		A
AIR GUARD	AIR GUARD	168.6250		168.6250	110.9	A
<b>9. Prepared By (Resource Unit Leader)</b>			<b>Approved By (Planning Section Chief)</b>		<b>Date</b>	<b>Time</b>
JAMES MAHAFFY RESL (T)			KRISANN KOSEL		09/16/2023	2200

**Division/Group Assignment List (ICS 204 WF)**  
**Controlled Unclassified Information//Basic**

<b>1. Incident Name:</b>				<b>3.</b>		
UMPQUA FIRES				<b>Branch:</b>	<b>Division/Group</b>	
<b>2. Operational Period: DAY</b>						
Date/Time From: 09/17/2023 0700      SUN		Date/Time To: 09/17/2023 1900      SUN		<b>DINNER D</b>		
<b>4. Operations Personnel</b>						
<b>OPERATIONS CHIEF</b>		DAN MARTIN LARAE GUILLORY (T)		<b>BRANCH DIRECTOR</b>		
<b>SAFETY OFFICERS</b>		ERIC RISDALL SHANE THEALL		<b>DIVISION/GROUP SUPERVISOR</b> LOGAN LAWSON		
<b>5. Resources Assigned this Period</b>						
Strike Team / Task Force / Resource Designator		LWD	Leader	Number Persons	Drop Off PT./Time	Pick Up PT./Time
O-240 SOF2		09/26	AL AUGUSTINE	1	SPARPS CREEK BASE CAMP/0700	SPARPS CREEK BASE CAMP/1900
E-42 ENG4 METHOW RIVER WILD FIRE			CINDY GAMEROS	3	SHARPS CREEK BASE CAMP/0700	SHARPS CREEK BASE CAMP/1900
E-195 ENG6 VALLEY FIRE			ZACK SMITH	3	SHARPS CREEK BASE CAMP/0700	SHARPS CREEK BASE CAMP/1900
O-129 REAF		09/23	JEDIDIAH HANCOCK	1	SHARPS CREEK BASE CAMP/0700	SHARPS CREEK BASE CAMP/1900
O-133 EMPF ADVENTURE MEDICS (MEDIC NELSON)		09/28	RUTH NELSON	1	SHARPS CREEK BASE CAMP/0700	SHARPS CREEK BASE CAMP/1900
<b>6. Control Operations/Work Assignments:</b>						
<p>Task: Continue to patrol and secure fireline. Continue with fire suppression repair work.          Purpose: Prevent fire from impacting values at risk, including communities to the west, commercial timberlands, T&amp;E habitat.          End State: Fire is kept north of 1745 RD and south of 1746 RD to protect the values at risk through the remainder of the fire season.</p>						
<b>7. Special Instructions:</b>						
<ul style="list-style-type: none"> <li>All resources assigned to this division need to add DINNER FIRE OR-UPF-000357 P6QLF5 (0615) to your CTR's and Shift Tickets</li> </ul>						
<b>8. Division/Group Communication Summary</b>						
Function	Channel	RX Frequency N/W	RX Tone/NAC	TX Frequency N/W	TX Tone/NAC	Mode
TACTICAL	TAC 3	168.6000	100.0	168.6000	100.0	A
COMMAND	CMD 7	170.0625	100.0	162.4375	100.0	A
COMMAND	CMD 8	169.6125	100.0	162.5125	100.0	A
AIR TO GROUND	A/G PRI	165.9875		165.9875		A
AIR TO GROUND	A/G SEC	173.5000		173.5000		A
AIR GUARD	AIR GUARD	168.6250		168.6250	110.9	A
<b>9. Prepared By (Resource Unit Leader)</b>			<b>Approved By (Planning Section Chief)</b>		<b>Date</b>	<b>Time</b>
JAMES MAHAFFY RESL(T)			KRISANN KOSEL		09/16/2023	1327

**Division/Group Assignment List (ICS 204 WF)**  
**Controlled Unclassified Information//Basic**

<b>1. Incident Name:</b>			<b>3.</b>			
UMPQUA FIRES			<b>Branch:</b>		<b>Division/Group</b>	
<b>2. Operational Period: DAY</b>			GRIZZLY S/Z			
Date/Time From: 09/17/2023 0700	SUN	Date/Time To: 09/17/2023 1900				
<b>4. Operations Personnel</b>						
<b>OPERATIONS CHIEF</b>		DAN MARTIN LARAE GUILLORY (T)		<b>BRANCH DIRECTOR</b>		
<b>SAFETY OFFICERS</b>		ERIC RISDAL SHANE THEALL		<b>DIVISION/GROUP SUPERVISOR</b>		RORY HIETT
<b>5. Resources Assigned this Period</b>						
Strike Team / Task Force / Resource Designator	LWD	Leader	Number Persons	Drop Off PT./Time	Pick Up PT./Time	
O-36 SOFC	09/19	RICHARD MCCONNELL	1	SHARPS CREEK BASE CAMP/0700	SHARPS CREEK BASE CAMP/1900	
O-240.32 SOF2	09/26	AL AUGUSTINE	1	SHARPS CREEK BASECAMP/0700	SHARPS CREEK BASECAMP/1900	
C-8.2 TFLD	09/29	PHILIP BRASS	1	SHARPS CREEK BASE CAMP/0700	SHARPS CREEK BASE CAMP/1900	
C-8.12 TFLD (T)	09/14	RAWLIN THOMAS MYERS	1	SHARPS CREEK BASE CAMP/0700	SHARPS CREEK BASE CAMP/1900	
O-11 WFM WARM SPRINGS	09/29	JOSHUA SOHAPPY	7	SHARPS CREEK BASE CAMP/0700	SHARPS CREEK BASE CAMP/1900	
O-209 WFM STORM PEAK	09/18	TIM CUSACK	13	SHARPS CREEK BASE CAMP/0700	SHARPS CREEK BASE CAMP/1900	
C-8 CR2I POTOMAC	09/29	JARED ROGERS	20	SHARPS CREEK BASE CAMP/0700	SHARPS CREEK BASE CAMP/1900	
E-157 SKG2 MICHAEL SUTCH		MICHAEL SUTCH	1	SHARPS CREEK BASE CAMP/0700	SHARPS CREEK BASE CAMP/1900	
E-158 SKG2 HARD HUNT		JEREMY RUSSELL	2	SHARPS CREEK BASE CAMP/0700	SHARPS CREEK BASE CAMP/1900	
E-7 WTS3 PACIFIC RIDGELINE		JUSTIN RIOLO	1	SHARPS CREEK BASE CAMP/0700	SHARPS CREEK BASE CAMP/1900	
E-13 VUTV KD OUTDOORS LLC				SHARPS CREEK BASE CAMP/0700	SHARPS CREEK BASE CAMP/1900	
E-84 VUTV KWIK RESPONSE				SHARPS CREEK BASE CAMP/0700	SHARPS CREEK BASE CAMP/1900	
E-90 VUTV TOG GUN				SHARPS CREEK BASE CAMP/0700	SHARPS CREEK BASE CAMP/1900	
O-15 FMOD B&M	09/29	NICK BROWNING	2	SHARPS CREEK BASE CAMP/0700	SHARPS CREEK BASE CAMP/1900	
<b>8. Division/Group Communication Summary</b>						
Function	Channel	RX Frequency N/W	RX Tone/NAC	TX Frequency N/W	TX Tone/NAC	Mode
TACTICAL	TAC 4	166.7250	100.0	166.7250	100.0	A
COMMAND	CMD 7	170.0625	100.0	162.4375	100.0	A
COMMAND	CMD 8	169.6125	100.0	162.5125	100.0	A
AIR TO GROUND	A/G PRI	165.9875		165.9875		A
AIR TO GROUND	A/G SEC	173.5000		173.5000		A
AIR GUARD	AIR GUARD	168.6250		168.6250	110.9	A
<b>9. Prepared By (Resource Unit Leader)</b>		<b>Approved By (Planning Section Chief)</b>			<b>Date</b>	<b>Time</b>
JAMES MAHAFFY RESL (T)		KRISANN KOSEL			09/16/2023	2200

**Division/Group Assignment List (ICS 204 WF)**  
**Controlled Unclassified Information//Basic**

<b>1. Incident Name:</b>			<b>3.</b>			
UMPQUA FIRES			<b>Branch:</b>		<b>Division/Group</b>	
<b>2. Operational Period: DAY</b>			GRIZZLY S/Z			
Date/Time From: 09/17/2023 0700      SUN		Date/Time To: 09/17/2023 1900      SUN				
<b>4. Operations Personnel</b>						
<b>OPERATIONS CHIEF</b>		DAN MARTIN LARAE GUILLORY (T)		<b>BRANCH DIRECTOR</b>		
<b>SAFETY OFFICERS</b>		ERIC RISDAL SHANE THEALL		<b>DIVISION/GROUP SUPERVISOR</b>		RORY HIETT
<b>5. Resources Assigned this Period</b>						
Strike Team / Task Force / Resource Designator		LWD	Leader	Number Persons	Drop Off PT./Time	Pick Up PT./Time
O-129 REAF		09/23	JEDIDIAH HANCOCK	1	SHARPS CREEK BASECAMP/0700	SHARPS CREEK BASECAMP/1900
E-64 AMB2 ROUGH COUNTRY (AMB 5)		09/17	DAVID GUZMAN	2	SHARPS CREEK BASE CAMP/0700	SHARPS CREEK BASE CAMP/1900
<b>6. Control Operations/Work Assignments:</b>						
<p><b>Task:</b> Assess need to take action on the Grizzly fire using pre-identified actions as defined in the management action points.</p> <p><b>Purpose:</b> Prevent fire from impacting values at risk, including private residences, communities to the west, historic mining community and infrastructure and commercial timberlands.</p> <p><b>End State:</b> Fire is kept west of the 2213 RD, north of the 904 RD, east of the 2473 RD, and south of 22 RD, to protect the values at risk through the remainder of fire season. Structures are prepped and secured.</p>						
<b>7. Special Instructions:</b>						
<ul style="list-style-type: none"> <li>All resources assigned to this division need to add Grizzly Fire OR-UPF-000341 P6QL0W (0615) to your CTR's and shift tickets.</li> </ul>						
<b>8. Division/Group Communication Summary</b>						
Function	Channel	RX Frequency N/W	RX Tone/NAC	TX Frequency N/W	TX Tone/NAC	Mode
TACTICAL	TAC 4	166.7250	100.0	166.7250	100.0	A
COMMAND	CMD 7	170.0625	100.0	162.4375	100.0	A
COMMAND	CMD 8	169.6125	100.0	162.5125	100.0	A
AIR TO GROUND	A/G PRI	165.9875		165.9875		A
AIR TO GROUND	A/G SEC	173.5000		173.5000		A
AIR GUARD	AIR GUARD	168.6250		168.6250	110.9	A
<b>9. Prepared By (Resource Unit Leader)</b>			<b>Approved By (Planning Section Chief)</b>		<b>Date</b>	<b>Time</b>
JAMES MAHAFFY RESL (T)			KRISANN KOSEL		09/16/2023	2200



**Division/Group Assignment List (ICS 204 WF)**  
**Controlled Unclassified Information//Basic**

<b>1. Incident Name:</b>			<b>3.</b>			
UMPQUA FIRES			<b>Branch:</b>		<b>Division/Group</b>	
<b>2. Operational Period:</b> 0700 - 1900			CHILCOOT E			
Date/Time From: 09/17/2023 0700 SUN		Date/Time To: 09/17/2023 1900 SUN				
<b>4. Operations Personnel</b>						
<b>OPERATIONS CHIEF</b>		DAN MARTIN LARAE GUILLORY (T)		<b>SAFETY OFFICERS</b>		ERIC RISDAL SHANE THEALL
<b>BRANCH DIRECTOR</b>				<b>DIVISION/GROUP SUPERVISOR</b>		NICK PETERS
<b>5. Resources Assigned this Period</b>						
Strike Team / Task Force / Resource Designator		LWD	Leader	Number Persons	Drop Off PT./Time	Pick Up PT./Time
O-90 SOFR		09/20	MICHAEL GOYETTE	1	STRADER ICP/0700	STRADER ICP/1900
O-265 SOFR		09/26	MICHAEL JOHNSON	1	STRADER ICP/0700	STRADER ICP/1900
O-138 TFLD		09/27	TOM SCHOENFELDER	1	STRADER ICP/0700	STRADER ICP/1900
O-240.71 TFLD (T)		09/25	MEGAN HURRELL	1	STRADER ICP/0700	STRADER ICP/1900
C-47 CR2I SRV #10		09/23	ANDRES HERNADEZ	25	STRADER ICP/0700	STRADER ICP/1900
C-50 CRW2 GFP		09/25	JESSE SZABO	20	STRADER ICP/0700	STRADER ICP/1900
C-51 CRW2 OROZCO		09/24	CHRIS OROZCO	20	STRADER ICP/0700	STRADER ICP/1900
E-188 ENG4 ORUPF E424		09/22	JEFF CASE	5	STRADER ICP/0700	STRADER ICP/1900
E-183 ENG6 TIMBER TIPPER			KEITH REID	3	STRADER ICP/0700	STRADER ICP/1900
E-185 ENG6 GRAYBACK E25			ARIC PAUL	3	STRADER ICP/0700	STRADER ICP/1900
E-112 WTT1 HYDROTACTICAL			DANIEL WARNER	2	STRADER ICP/0700	STRADER ICP/1900
E-178 WTS2 SIMONS			JOSETTE ROCHAT	1	STRADER ICP/0700	STRADER ICP/1900
E-177 DZR2 PARKHURST			KRAIG CERMAK	2	STRADER ICP/0700	STRADER ICP/1900
E-10016 CHP2 IRA TORRES			ADAN CHAVEZ	3	STRADER ICP/0700	STRADER ICP/1900
<b>8. Division/Group Communication Summary</b>						
Function	Channel	RX Frequency N/W	RX Tone/NAC	TX Frequency N/W	TX Tone/NAC	Mode
TACTICAL	TAC 2	168.2000	167.9	168.2000	167.9	A
TACTICAL	TAC 4	166.7250	167.9	166.7250	167.9	A
COMMAND	CMD 9	173.6000	167.9	169.4625	167.9	A
COMMAND	CMD 10	169.8375	167.9	162.4625	167.9	A
AIR TO GROUND	A/G PRI	167.1500		167.1500		A
AIR TO GROUND	A/G SEC	170.2625		170.2625		A
AIR GUARD	AIR GUARD	168.6250		168.6250	110.9	A
<b>9. Prepared By (Resource Unit Leader)</b>			<b>Approved By (Planning Section Chief)</b>		<b>Date</b>	<b>Time</b>
STEPHANIE FALCON			KRISANN KOSEL		09/16/2023	2200

**Division/Group Assignment List (ICS 204 WF)**  
**Controlled Unclassified Information//Basic**

<b>1. Incident Name:</b>			<b>3.</b>			
UMPQUA FIRES			<b>Branch:</b>		<b>Division/Group</b>	
<b>2. Operational Period:</b> 0700 - 1900					CHILCOOT E	
Date/Time From: 09/17/2023 0700	SUN	Date/Time To: 09/17/2023 1900	SUN			
<b>4. Operations Personnel</b>						
<b>OPERATIONS CHIEF</b>		DAN MARTIN LARAE GUILLORY (T)		<b>SAFETY OFFICERS</b>		ERIC RISDAL SHANE THEALL
<b>BRANCH DIRECTOR</b>				<b>DIVISION/GROUP SUPERVISOR</b>		NICK PETERS
<b>5. Resources Assigned this Period</b>						
Strike Team / Task Force / Resource Designator		LWD	Leader	Number Persons	Drop Off PT./Time	Pick Up PT./Time
E-10017 CHP2 IRA TORRES			ISMAEL LOPEZ	3	STRADER ICP/0700	STRADER ICP/1900
O-225 EQPM (T)		09/20	PHILLIP MAZON	1	STRADER ICP/0700	STRADER ICP/1900
E-137 WTS2 ON THE GO H2O			TIM SCHMIDT	1	STRADER ICP/0700	STRADER ICP/1900
E-138 WTS2 COWBOY FIRE			MALIKI PARKER	1	STRADER ICP/0700	STRADER ICP/1900
E-114 EXC2 SCOTT MARSHALL			SCOTT MARSHALL	2	STRADER ICP/0700	STRADER ICP/1900
E-6 GRD1 MARK JONES			JESS CALVERT	2	STRADER ICP/0700	STRADER ICP/1900
E-12 VROL MARK JONES			JUSTIN MURPHY	1	STRADER ICP/0700	STRADER ICP/1900
O-142 REAF		09/24	BRADY DODD	1	STRADER ICP/0700	STRADER ICP/1900
O-143 REAF		09/21	MADELYN HOUSTON	1	STRADER ICP/0700	STRADER ICP/1900
O-233 REAF		09/21	DANE SJODEN	1	STRADER ICP/0700	STRADER ICP/1900
O-238 REAF		09/21	CHRIS MCGRATH	1	STRADER ICP/0700	STRADER ICP/1900
<b>8. Division/Group Communication Summary</b>						
Function	Channel	RX Frequency N/W	RX Tone/NAC	TX Frequency N/W	TX Tone/NAC	Mode
TACTICAL	TAC 2	168.2000	167.9	168.2000	167.9	A
TACTICAL	TAC 4	166.7250	167.9	166.7250	167.9	A
COMMAND	CMD 9	173.6000	167.9	169.4625	167.9	A
COMMAND	CMD 10	169.8375	167.9	162.4625	167.9	A
AIR TO GROUND	A/G PRI	167.1500		167.1500		A
AIR TO GROUND	A/G SEC	170.2625		170.2625		A
AIR GUARD	AIR GUARD	168.6250		168.6250	110.9	A
<b>9. Prepared By (Resource Unit Leader)</b>			<b>Approved By (Planning Section Chief)</b>		<b>Date</b>	<b>Time</b>
STEPHANIE FALCON			KRISANN KOSEL		09/16/2023	2200

**Division/Group Assignment List (ICS 204 WF)**  
**Controlled Unclassified Information//Basic**

<b>1. Incident Name:</b>			<b>3.</b>			
UMPQUA FIRES			<b>Branch:</b>		<b>Division/Group</b>	
<b>2. Operational Period:</b> 0700 - 1900			CHILCOOT E			
Date/Time From: 09/17/2023 0700	SUN	Date/Time To: 09/17/2023 1900				
<b>4. Operations Personnel</b>						
<b>OPERATIONS CHIEF</b>		DAN MARTIN LARAE GUILLORY (T)		<b>SAFETY OFFICERS</b>		ERIC RISDAL SHANE THEALL
<b>BRANCH DIRECTOR</b>				<b>DIVISION/GROUP SUPERVISOR</b>		NICK PETERS
<b>5. Resources Assigned this Period</b>						
Strike Team / Task Force / Resource Designator		LWD	Leader	Number Persons	Drop Off PT./Time	Pick Up PT./Time
O-72 REMS BACKCOUNTRY RESCUE (REMS 11)		09/21	JOHN MEYER	5	STRADER ICP/0700	STRADER ICP/1900
E-32 AMBO UNLIMITED PARAMEDICS (AMBO 22)		09/18	SETH CRIBB	2	STRADER ICP/0700	STRADER ICP/1900
O-64 EMPF		09/18	RICH DOBSON	1	STRADER ICP/0700	STRADER ICP/1900
O-58 EMTF		09/18	SOREN CAUDILL	1	STRADER ICP/0700	STRADER ICP/1900
<b>6. Control Operations/Work Assignments:</b>						
<p><b>Task:</b> Complete and improve containment lines from the 3806 RD along the perimeter to Hipower Bluffs. Improve control lines and mop-up along the 3806 RD. Continue any remaining prep along the 300 spur road. Mop up and secure from the 3806 RD into the head of Hipower Creek.</p> <p><b>Purpose:</b> To prevent fire from impacting values such as nearby communities, private timberland, critical infrastructure by limiting fire spread.</p> <p><b>End State:</b> Fire is contained west of the 3806 RD and 300 RD and north of the Hipower Bluffs.</p>						
<b>7. Special Instructions:</b>						
<ul style="list-style-type: none"> <li>Utilize Chilcoot repeater. Mitigate snag hazard and implement the risk management process in tactical decisions. Support tactics that minimize impacts to private property. Avoid waterways with retardant applications and reduce impact to Salmom/Steelhead protected populations. Ensure signage is adequate to all drop points. Add signage at all major intersections to help with locating drop points.</li> <li>Resources assigned to this division should put OR-UPF-000345 Chilcoot P6QLF5 (0615) on all CTR's and shift tickets.</li> </ul>						
<b>8. Division/Group Communication Summary</b>						
Function	Channel	RX Frequency N/W	RX Tone/NAC	TX Frequency N/W	TX Tone/NAC	Mode
TACTICAL	TAC 2	168.2000	167.9	168.2000	167.9	A
TACTICAL	TAC 4	166.7250	167.9	166.7250	167.9	A
COMMAND	CMD 9	173.6000	167.9	169.4625	167.9	A
COMMAND	CMD 10	169.8375	167.9	162.4625	167.9	A
AIR TO GROUND	A/G PRI	167.1500		167.1500		A
AIR TO GROUND	A/G SEC	170.2625		170.2625		A
AIR GUARD	AIR GUARD	168.6250		168.6250	110.9	A
<b>9. Prepared By (Resource Unit Leader)</b>			<b>Approved By (Planning Section Chief)</b>		<b>Date</b>	<b>Time</b>
STEPHANIE FALCON			KRISANN KOSEL		09/16/2023	2200

**Division/Group Assignment List (ICS 204 WF)**  
**Controlled Unclassified Information//Basic**

<b>1. Incident Name:</b>			<b>3.</b>			
UMPQUA FIRES			<b>Branch:</b>		<b>Division/Group</b>	
<b>2. Operational Period:</b> 0700 - 1900					CHILCOOT H	
Date/Time From: 09/17/2023 0700	SUN	Date/Time To: 09/17/2023 1900	SUN			
<b>4. Operations Personnel</b>						
<b>OPERATIONS CHIEF</b>		DAN MARTIN LARAE GUILLORY (T)		<b>SAFETY OFFICERS</b>		ERIC RISDAL SHANE THEALL
<b>BRANCH DIRECTOR</b>				<b>DIVISION/GROUP SUPERVISOR</b>		JON MILES
<b>5. Resources Assigned this Period</b>						
Strike Team / Task Force / Resource Designator		LWD	Leader	Number Persons	Drop Off PT./Time	Pick Up PT./Time
O-265 SOFR		09/26	MICHAEL JOHNSON	1	STRADER ICP/0700	STRADER ICP/1900
E-190 ENG4 J3			JOSE ARIZMENDI	3	STRADER ICP/0700	STRADER ICP/1900
E-184 ENG6 DIAMOND FIRE			NICHOLAS KING	3	STRADER ICP/0700	STRADER ICP/1900
E-187 ENG6 FRANCO			REBECCA PICKERING	3	STRADER ICP/0700	STRADER ICP/1900
E-199 WTT1 NEVADA FORESTRY NDF-5181		09/29	JERRY SIMPSON	2	STRADER ICP/0700	STRADER ICP/1900
O-57 EMTF		09/18	MELISSA MARTINEZ	1	STRADER ICP/0700	STRADER ICP/1900
O-174 EMPF		09/17	GREG GIFFORD	1	STRADER ICP/0700	STRADER ICP/1900
<b>6. Control Operations/Work Assignments:</b>						
<p><b>Task:</b> Continue mop-up and securing along Hipower Creek. Continue lining and securing the fire edge at the head of Hipower creek. Monitor conditions and develop options as needed to burn out areas of dirty burn/ indirect line on the north edge of the fire near Hipower Creek.</p> <p><b>Purpose:</b> To prevent fore from impacting values, such as nearby communities, private timberland, and critical infrastructure by limiting fire spread.</p> <p><b>End State:</b> Fire is contained along existing fireline in Hipower creek, and south of the ridge line above the head of Hipower Creek.</p>						
<b>7. Special Instructions:</b>						
<ul style="list-style-type: none"> <li>Mitigate aerial hazards, both standing live and snag trees. Survey work areas and implement the risk management process in all tactical decisions. Support tactics that minimize impacts to private timber and property. Avoid waterways with retardant applications and use screens to reduce impact to Salmo/ Steelhead protected populations.</li> <li>All resources assigned to this division need to out OR0UPF-000345 P6QLF5 (0615) on there CTR's and shift tickets.</li> </ul>						
<b>8. Division/Group Communication Summary</b>						
Function	Channel	RX Frequency N/W	RX Tone/NAC	TX Frequency N/W	TX Tone/NAC	Mode
TACTICAL	TAC 3	168.6000	167.9	168.6000	167.9	A
COMMAND	CMD 8	173.7125	167.9	162.6000	167.9	A
COMMAND	CMD 9	173.6000	167.9	169.4625	167.9	A
AIR TO GROUND	A/G PRI	167.1500		167.1500		A
AIR TO GROUND	A/G SEC	170.2625		170.2625		A
AIR GUARD	AIR GUARD	168.6250		168.6250	110.9	A
<b>9. Prepared By (Resource Unit Leader)</b>			<b>Approved By (Planning Section Chief)</b>		<b>Date</b>	<b>Time</b>
STEPHANIE FALCON			KRISANN KOSEL		09/16/2023	2200

**Division/Group Assignment List (ICS 204 WF)**  
**Controlled Unclassified Information//Basic**

<b>1. Incident Name:</b>			<b>3.</b>			
UMPQUA FIRES			<b>Branch:</b>		<b>Division/Group</b>	
<b>2. Operational Period:</b> 0700 - 1900					CHILCOOT J	
Date/Time From: 09/17/2023 0700      SUN	Date/Time To: 09/17/2023 1900      SUN					
<b>4. Operations Personnel</b>						
<b>OPERATIONS CHIEF</b>		DAN MARTIN LARAE GUILLORY (T)		<b>SAFETY OFFICERS</b>		ERIC RISDAL SHANE THEALL
<b>BRANCH DIRECTOR</b>				<b>DIVISION/GROUP SUPERVISOR</b>		DAN COTHREN
<b>5. Resources Assigned this Period</b>						
Strike Team / Task Force / Resource Designator	LWD	Leader	Number Persons	Drop Off PT./Time	Pick Up PT./Time	
O-265 SOFR	09/26	MICHAEL JOHNSON	1	STRADER ICP/0700	STRADER ICP/1900	
O-13 TFLD	09/28	JEREMY BRYANT	1	STRADER ICP/0700	STRADER ICP/1900	
O-292 HEQB (T)	09/29	GARRETT GIBBS	1	STRADER ICP/0700	STRADER ICP/1900	
O-291 HEQB	09/29	BRIAN GENTIS	1	STRADER ICP/0700	STRADER ICP/1900	
C-49 CRW1 HELENA IHC	09/26	TIGHE STOYANOFF	25	STRADER ICP/0700	STRADER ICP/1900	
C-52 CRW2 PACIFIC OASIS C-2	09/28	ALEX HESS	20	STRADER ICP/0700	STRADER ICP/1900	
C-53 CR2I WENATCHEE RIVER	09/26	BRIAN FLATTEN	18	STRADER ICP/0700	STRADER ICP/1900	
C-54 CRW2 PACIFIC OASIS	09/30	DONTE MARQUEZ	20	STRADER ICP/0700	STRADER ICP/1900	
E-189 ENG4 DIAMOND FIRE		DEAN WILSON	3	STRADER ICP/0700	STRADER ICP/1900	
E-13 WTS2 SCOTT MARSHALL		BENNEY YOKUM	1	STRADER ICP/0700	STRADER ICP/1900	
E-173 WTS2 SCOTT MARSHALL		RICHARD JOHNSON	1	STRADER ICP/0700	STRADER ICP/1900	
E-24 DZR2 TOUGH EQUIPMENT		ROBERT ASHERIN	2	STRADER ICP/0700	STRADER ICP/1900	
E-136 UTV				STRADER ICP/0700	STRADER ICP/1900	
E-137 UTV				STRADER ICP/0700	STRADER ICP/1900	
O-142 REAF	09/24	BRADY DODD	1	STRADER ICP/0700	STRADER ICP/1900	
O-233 REAF	09/21	DANE SJODEN	1	STRADER ICP/0700	STRADER ICP/1900	
O-234 REAF	09/24	NATALIE MILLS	1	STRADER ICP/0700	STRADER ICP/1900	
<b>8. Division/Group Communication Summary</b>						
Function	Channel	RX Frequency N/W	RX Tone/NAC	TX Frequency N/W	TX Tone/NAC	Mode
TACTICAL	TAC 1	168.0500	167.9	168.0500	167.9	A
COMMAND	CMD 9	173.6000	167.9	169.4625	167.9	A
COMMAND	CMD 10	169.8375	167.9	162.4625	167.9	A
AIR TO GROUND	A/G PRI	167.1500		167.1500		A
AIR TO GROUND	A/G SEC	170.2625		170.2625		A
AIR GUARD	AIR GUARD	168.6250		168.6250	110.9	A
<b>9. Prepared By (Resource Unit Leader)</b>		<b>Approved By (Planning Section Chief)</b>			<b>Date</b>	<b>Time</b>
STEPHANIE FALCON		KRISANN KOSEL			09/16/2023	2200

**Division/Group Assignment List (ICS 204 WF)**  
**Controlled Unclassified Information//Basic**

<b>1. Incident Name:</b>				<b>3.</b>		
UMPQUA FIRES				<b>Branch:</b>	<b>Division/Group</b>	
<b>2. Operational Period:</b> 0700 - 1900						
Date/Time From: 09/17/2023 0700 SUN		Date/Time To: 09/17/2023 1900 SUN		CHILCOOT J		
<b>4. Operations Personnel</b>						
<b>OPERATIONS CHIEF</b>		DAN MARTIN LARAE GUILLORY (T)		<b>SAFETY OFFICERS</b>		
<b>BRANCH DIRECTOR</b>				<b>DIVISION/GROUP SUPERVISOR</b>		
				ERIC RISDAL SHANE THEALL DAN COTHREN		
<b>5. Resources Assigned this Period</b>						
Strike Team / Task Force / Resource Designator		LWD	Leader	Number Persons	Drop Off PT./Time	Pick Up PT./Time
O-238 REAF		09/21	CHRIS MCGRATH	1	STRADER ICP/0700	STRADER ICP/1900
O-237 REAF (T)		09/25	ELIZABETH DAY	1	STRADER ICP/0700	STRADER ICP/1900
O-73 REMS ROUGH COUNTRY (REMS 22)		09/19	ANDREW PADDISON	4	STRADER ICP/0700	STRADER ICP/1900
E-142 AMB2 CARDINAL MEDICAL SOULTIONS (MED MOD 1)		09/23	CHARLES CARLSON	2	STRADER ICP/0700	STRADER ICP/1900
E-175 AMBU BEST PRACTICES (AMBU 44)		09/22	DEVIN BEST	2	STRADER ICP/0700	STRADER ICP/1900
O-62 EMPF		09/18	JEFFERY KAISER	1	STRADER ICP/0700	STRADER ICP/1900
<b>6. Control Operations/Work Assignments:</b>						
<p><b>Task:</b> Continue to take action to secure fire from the southwest corner of Hipower Creek to the 3803 RD. Complete fireline preparation on the indirect line off the 3803 RD. Monitor conditions and continue preparation for implementing firing plan in indirect areas.</p> <p><b>Purpose:</b> To prevent fire from impacting nearby communities, private timberland, and critical infrastructure by limiting fire spread.</p> <p><b>End State:</b> Fire is contained east of the forest boundary, west of the Hipower Bluffs and north of the indirect line connected to the 3803 RD.</p>						
<b>7. Special Instructions:</b>						
<ul style="list-style-type: none"> <li>Survey and mitigate aerial hazards including live trees and snags as needed. Implementing risk management process in all tactical decisions, utilize tactics that minimize impacts to private property. Avoid waterways with retardant. Use screens to reduce impact on salmon/ steelhead protected populations.</li> <li>Ensure signage is adequate at all drop points. Add signage at all major intersections to help with locating drop zones.</li> <li>All resources assigned to this Division need to put OR-UPF 000345 P6QLF5 (0615) on all CTR's and shift tickets.</li> </ul>						
<b>8. Division/Group Communication Summary</b>						
Function	Channel	RX Frequency N/W	RX Tone/NAC	TX Frequency N/W	TX Tone/NAC	Mode
TACTICAL	TAC 1	168.0500	167.9	168.0500	167.9	A
COMMAND	CMD 9	173.6000	167.9	169.4625	167.9	A
COMMAND	CMD 10	169.8375	167.9	162.4625	167.9	A
AIR TO GROUND	A/G PRI	167.1500		167.1500		A
AIR TO GROUND	A/G SEC	170.2625		170.2625		A
AIR GUARD	AIR GUARD	168.6250		168.6250	110.9	A
<b>9. Prepared By (Resource Unit Leader)</b>			<b>Approved By (Planning Section Chief)</b>		<b>Date</b>	<b>Time</b>
STEPHANIE FALCON			KRISANN KOSEL		09/16/2023	2200

**Division/Group Assignment List (ICS 204 WF)**  
**Controlled Unclassified Information//Basic**

<b>1. Incident Name:</b>			<b>3.</b>			
UMPQUA FIRES			<b>Branch:</b>		<b>Division/Group</b>	
<b>2. Operational Period:</b> 0700 - 1900					RIDGE W	
Date/Time From: 09/17/2023 0700 SUN		Date/Time To: 09/17/2023 1900 SUN				
<b>4. Operations Personnel</b>						
<b>OPERATIONS CHIEF</b>		DAN MARTIN LARAE GUILLORY (T)		<b>SAFETY OFFICERS</b>		ERIC RISDAL SHANE THEALL
<b>BRANCH DIRECTOR</b>				<b>DIVISION/GROUP SUPERVISOR</b>		SHILOW NORTON
<b>5. Resources Assigned this Period</b>						
Strike Team / Task Force / Resource Designator		LWD	Leader	Number Persons	Drop Off PT./Time	Pick Up PT./Time
O-265 SOFR		09/26	MICHAEL JOHNSON	1	STRADER ICP/0700	STRADER ICP/1900
E-4 ENG4 TORRES			JAUN TORRES	3	STRADER ICP/0700	STRADER ICP/1900
E-186 ENG6 FENIX			SUZANNE FLYNN	3	STRADER ICP/0700	STRADER ICP/1900
O-63 EMPF		09/19	TOM GIBSON	1	STRADER ICP/0700	STRADER ICP/1900
<b>6. Control Operations/Work Assignments:</b>						
<p><b>Task:</b> Complete line on north part of Ridge Fire. Look for opportunities to secure fire edge in the northeast corner of fire below 5851 RD. Begin repair on 5851 RD. Continue mop-up and securing line on the remainder of the fire.</p> <p><b>Purpose:</b> Prevent impact to nearby values by limiting fire spread towards Fuller Lake, the Willamette NF and Boulder Creek Wilderness.</p> <p><b>End State:</b> Fire is contained east of Fuller Lake, North of the 3810 RD and west of the 5851 Rd.</p>						
<b>7. Special Instructions:</b>						
<ul style="list-style-type: none"> <li>Mitigate aerial hazards, both standing live and snag trees. Survey work areas and implement the risk management process in all tactical decisions. Support tactics that minimize impacts to private timber property. Avoid waterways with retardant applications and use screens to reduce the impact to Salmon/ Steelhead protected populations.</li> <li>Ensure signage is adequate at all drop points. Add signage at all major intersections to help with locating drop points.</li> <li>All resources assigned to this division will put OR-UPF-000346 P6QLFA (0615) on the bottom of CTR's and shift tickets.</li> </ul>						
<b>8. Division/Group Communication Summary</b>						
Function	Channel	RX Frequency N/W	RX Tone/NAC	TX Frequency N/W	TX Tone/NAC	Mode
TACTICAL	TAC 5	166.7750	167.9	166.7750	167.9	A
COMMAND	CMD 8	173.7125	167.9	162.6000	167.9	A
AIR TO GROUND	A/G PRI	167.1500		167.1500		A
AIR TO GROUND	A/G SEC	170.2625		170.2625		A
AIR GUARD	AIR GUARD	168.6250		168.6250	110.9	A
<b>9. Prepared By (Resource Unit Leader)</b>			<b>Approved By (Planning Section Chief)</b>		<b>Date</b>	<b>Time</b>
STEPHANIE FALCON			KRISANN KOSEL		09/16/2023	2200

# MEDICAL PLAN (ICS 206 WF)

Controlled unclassified Information Basic

1. Incident/Project Name			2. Operational Period					
Umpqua Fires (Dinner, Brice Creek & Grizzly Fires)			Date/Time		9/17/2023 - 9/18/2023, 0600 - 0600			
3. Ambulance Services								
Name	Complete Address		Phone & EMS Frequency		Advanced Life Support			
					Yes	No		
South Lane Fire & Rescue	233 E. Harrison Ave, Cottage Grove, OR		Command Channel/911(Backup)		X			
4. Air Ambulance Services								
Name		Phone		Type of Aircraft and Capability				
Commercial Air Ambulance		911 / 541-344-2211		Closest available based on availability				
Teton, N38HX		Command		Short Haul, Day time use only				
5. Hospitals								
Name Address	GPS Datum – WGS 84		Travel Time		Phone	Helipad		Level of Care
			Air	Gnd		Yes	No	
Sacred Heart MC Riverbend 3333 Riverbend Dr. Springfield, OR 97477	Lat: N 44° 04.876' Long: W 123° 01.588' VHF:	30 min	1 hr	(541) 222-6929	X		Level II Trauma	
PeaceHealth Cottage Grove Community MC 1515 Village Dr Cottage Grove, OR	Lat: N 43° 48.2292' Long: W 123° 2.3801' VHF:	15 min	30 Min	(541) 942-6646	X		Non Trauma	
McKenzie-Willamette MC 1460 G St Springfield, OR 97477	Lat: N 44° 03.217' Long: W 123° 00.219' VHF:	30 min	1 hr	(541) 726-4580	X		Level III	
Legacy Emanuel 2801 N Gantenbein Ave Portland OR 97227	Lat: N 45°32.66' Long: W 122° 40.18' VHF:	1 hr	2 hr 30 min	(503) 413-2285	X		Level I / Burn Center	
6. Branch/Div/Group		Area Location Capability						
Grizzly Fire DIV S/Z		Ambu 5 - Evans						
Brice Creek Fire DIV A/C		Ambu 55- Puig (Transferring from ICP will be arriving mid-morning) REMS 1- Decker						
Dinner Fire DIV D		Medic Nelson						
Grizzly Fire Night Shift		Ambu 4						
Sharps Creek Base Camp		MEDL John Nokes (509)680-1339, MEDL(t) Christy Field Ambu 6 - Barto						
8. Prepared By (Medical Unit Leader)			9. Date/Time	10. Reviewed By (Safety Officer)		11. Date/Time		
Paul Smith, MEDLT			9/16/2023	Eric Risdal    ERIC RISDAL <small>Digitally signed by ERIC RISDAL Date: 2023.09.16 19:10:04 -0700</small>		9/16/2023		



# MEDICAL PLAN (ICS 206 WF)

Controlled unclassified Information Basic

1. Incident/Project Name			2. Operational Period					
UMPQUA FIRES (Chilcoot Fire & Ridge Fire)			Date/Time		9/17/2023 0600-2200			
3. Ambulance Services								
Name	Complete Address	Radio Frequency & Phone	Advanced Life Support					
			Yes	No				
Umpqua Valley Ambulance	1290 NE Cedar St. Roseburg OR	Command Channel/911 (backup)	X					
4. Air Ambulance Services								
Name	Phone	Type of Aircraft and Capability						
Commercial Air Ambulance	Command /911(backup)	Closest available ship based on availability						
Teton N38HX	Command Channel	Short Haul Capable (Walterville OR)						
Yellowstone N234BH	Command Channel	Short Haul Capable (Grants Pass OR)						
5. Hospitals								
Name Address	GPS Datum – WGS 84		Travel Time		Phone	Helipad		Level of Care
			Air	Gnd		Yes	No	
Mercy Medical Center 2700 NW Stewart Pkwy Roseburg, OR	<b>Lat:</b> N 43° 14.567'	<b>Long:</b> W 123° 21.983'	30 min	1 hr	(541) 673-0611	X		Level III Trauma
	<b>VHF:</b>							
Legacy Emanuel 2801 N Gantenbein Ave Portland OR 97227	<b>Lat:</b> N 45°32.66'	<b>Long:</b> W 122° 40.18'	2 hr	4 hr	(503) 413-2285	X		Level I/ Burn Center
	<b>VHF:</b>							
6. Branch/Div/Group	Area Location Capability							
<b>DIV J (Chilcoot)</b>	Med. Mod 1 - Carlson, AMBU 44 - Best, REMS 22 - Paddison EMPF Kaiser,							
<b>DIV E (Chilcoot)</b>	REMS 11 - Meyer, Ambu 22 - Cribb EMTF Caudill, EMPF Dobson							
<b>DIV H (Chilcoot)</b>	EMPF Gifford EMTF Martinez							
<b>DIV W (Ridge)</b>	EMPF Gibson							
<b>Chilcoot ICP</b>	MESU Cardinal Medical - Julie Sargent (In-Camp Treatment) MEDL Laura Belino, MEDL(t) Paul Smith							
8. Prepared By (Medical Unit Leader)	9. Date/Time	10. Reviewed By (Safety Officer)			11. Date/Time			
Paul Smith , MEDLT	9/16/2023	Eric Risdal ERIC RISDAL <small>Digitally signed by ERIC RISDAL Date: 2023.09.16 19:10:46 -0700</small>			9/16/2023			

# IWI Procedures

## Fire Line

1. Request closest EMT/Medic to the injured person and report to DIV Supervisor.
2. Contact **Chilcoot Communications** and declare a “Red medical” (critical), “Yellow medical” (serious), or “Green medical” (minor). Request emergency radio traffic if needed.
3. Give location of patient and best access for initial responders.
4. Describe injury(s): Are they bleeding? How much? Are they conscious? Can they talk? Do they know what’s going on? How many people are hurt.
5. Gather information for MIR and relay to dispatch as soon as practical (see MIR back page)

## Sharps Basecamp

1. Life threatening emergency, call 911
2. Call Chilcoot Communications on Command 7 or 8 or (310) 780-4296
3. Contact (go to) the medical tent.
4. Call the medical tent 310-780-4296

## Strader ICP

1. Life threatening emergency, call 911
2. Call Chilcoot Communications on Command or 949-648-1591
3. Non-life-threatening go to blue medical trailer located between lunch trailer and laundry trailer





# MEDICAL PLAN (ICS 206 WF)

Controlled Unclassified Information//Basic

## Medical Incident Report

**FOR A NON-EMERGENCY INCIDENT, WORK THROUGH CHAIN OF COMMAND TO REPORT AND TRANSPORT INJURED PERSONNEL AS NECESSARY.**

**FOR A MEDICAL EMERGENCY: IDENTIFY ON SCENE INCIDENT COMMANDER BY NAME AND POSITION AND ANNOUNCE "MEDICAL EMERGENCY" TO INITIATE RESPONSE FROM IMT COMMUNICATIONS/DISPATCH.**

Use the following items to communicate situation to communications/dispatch.

1. CONTACT COMMUNICATIONS / DISPATCH (**Verify correct frequency prior to starting report**)

*Ex: "Communications, Div. Alpha. Stand-by for Emergency Traffic."*

2. INCIDENT STATUS: *Provide incident summary (including number of patients) and command structure.*

*Ex: "Communications, I have a Red priority patient, unconscious, struck by a falling tree. Requesting air ambulance to Forest Road 1 at (Lat./Long.) This will be the Trout Meadow Medical, IC is TFLD Jones. EMT Smith is providing medical care."*

Severity of Emergency / Transport Priority	<input type="checkbox"/> RED / PRIORITY 1 Life or limb threatening injury or illness. Evacuation need is IMMEDIATE <i>Ex: Unconscious, difficulty breathing, bleeding severely, 2° – 3° burns more than 4 palm sizes, heat stroke, disoriented.</i> <input type="checkbox"/> YELLOW / PRIORITY 2 Serious Injury or illness. Evacuation may be DELAYED if necessary. <i>Ex: Significant trauma, unable to walk, 2° – 3° burns not more than 1-3 palm sizes.</i> <input type="checkbox"/> GREEN / PRIORITY 3 Minor Injury or illness. Non-Emergency transport <i>Ex: Sprains, strains, minor heat-related illness.</i>	
Nature of Injury or Illness & Mechanism of Injury		<i>Brief Summary of Injury or Illness (Ex: Unconscious, Struck by Falling Tree)</i>
Transport Request		<i>Air Ambulance / Short Haul/Hoist Ground Ambulance / Other</i>
Patient Location		<i>Descriptive Location &amp; Lat. / Long. (WGS84)</i>
Incident Name		<i>Geographic Name + "Medical" (Ex: Trout Meadow Medical)</i>
On-Scene Incident Commander		<i>Name of on-scene IC of Incident within an Incident (Ex: TFLD Jones)</i>
Patient Care		<i>Name of Care Provider (Ex: EMT Smith)</i>

3. INITIAL PATIENT ASSESSMENT: *Complete this section for each patient as applicable (start with the most severe patient)*

Patient Assessment: See IRPG page 106

Treatment:

4. TRANSPORT PLAN:

Evacuation Location (if different): *(Descriptive Location (drop point, intersection, etc.) or Lat. / Long.)* Patient's ETA to Evacuation Location:

Helispot / Extraction Site Size and Hazards:

5. ADDITIONAL RESOURCES / EQUIPMENT NEEDS:

*Example: Paramedic/EMT, Crews, Immobilization Devices, AED, Oxygen, Trauma Bag, IV/Fluid(s), Splints, Rope rescue, Wheeled litter, HAZMAT, Extrication*

6. COMMUNICATIONS: Identify State Air/Ground EMS Frequencies and Hospital Contacts as applicable

Function	Channel Name/Number	Receive (RX)	Tone/NAC *	Transmit (TX)	Tone/NAC *
COMMAND					
AIR-TO-GRND					
TACTICAL					

7. CONTINGENCY: **Considerations:** *If primary options fail, what actions can be implemented in conjunction with primary evacuation method? Be thinking ahead.*

8. ADDITIONAL INFORMATION: *Updates/Changes, etc.*

**REMEMBER:** Confirm ETA's of resources ordered. Act according to your level of training. Be Alert. Keep Calm. Think Clearly. Act Decisively.