

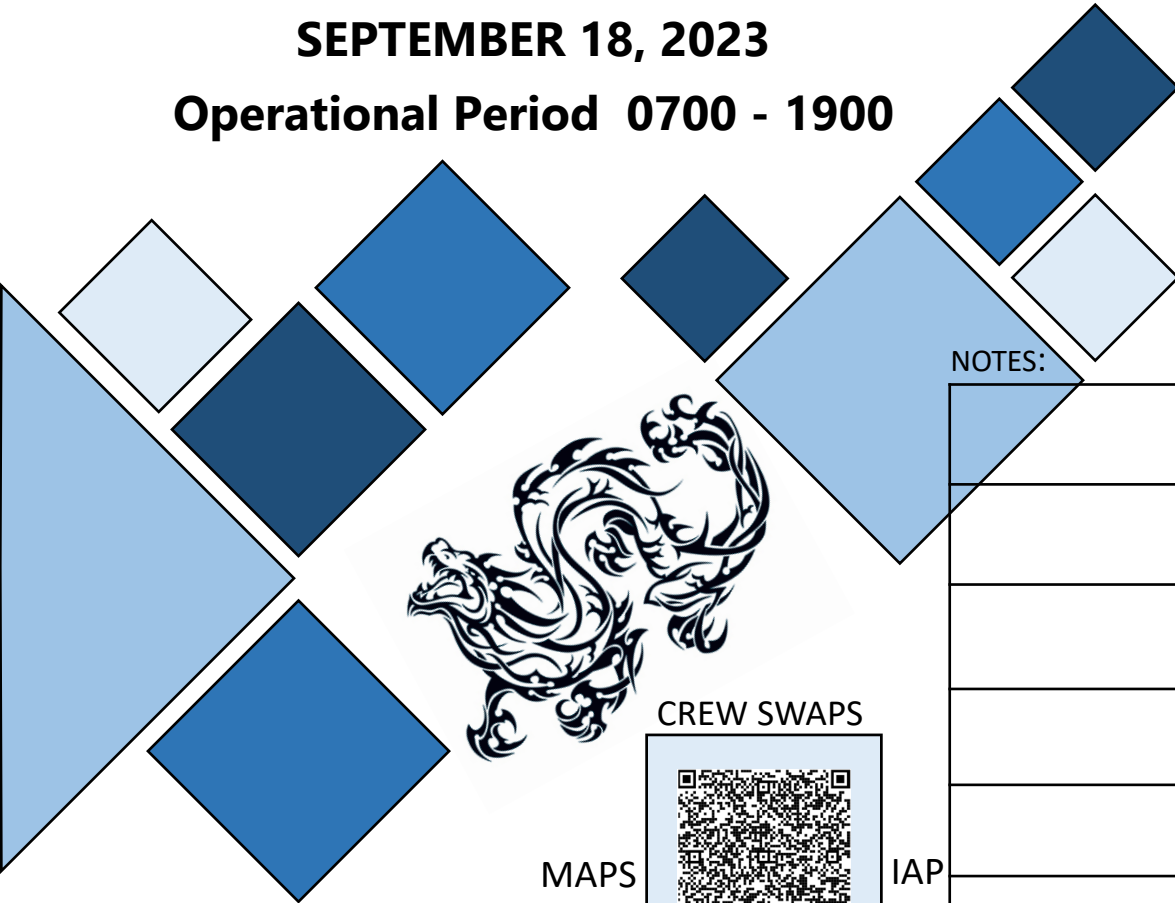
INCIDENT ACTION PLAN
**DINNER GRIZZLY BRICE CREEK
CHILCOOT RIDGE**



MONDAY

SEPTEMBER 18, 2023

Operational Period 0700 - 1900



NOTES:



CREW SWAPS



CHECK-IN

MAPS

IAP

Grizzly

OR-UPF-000341
P6 QL0W (0615)

Brice Creek

OR-UPF-000359
P6 QLJ4 (0615)

Dinner

OR-UPF-000357
P6 QLJ7 (0615)

Chilcoot

OR-UPF-000345
P6 QLF5 (0615)
221-ICU (DNR)

Ridge

OR-UPF-000346
P6 QLF4 (0615)

Incident Objectives (ICS 202)

1. Incident Name	2. Date Prepared	3. Time Prepared
Umpqua Fires	9/17/2023	2000

4. Operational Period (Date and Time)					
From:	9/18/2023	at	700	To:	9/18/2023 at 1900

5. Strategic Framework and Leaders Intent

Strategic Framework:
 Implement suppression strategies that minimize impacts to identified values at risk, and that ensures firefighter and public safety are the top priority

Specifically manage risk to firefighters by ensuring hazards are identified, assessed, and where possible mitigated. Be prepared to accept residual risk when exposure is commensurate with values threatened and the probability of achieving objectives is high.

Leaders Intent:

Engage in all work assignments with a high degree of professionalism and provide excellent customer service to all parties involved with the incident. All assigned personnel should:

- * Exhibit professional behavior
- * Ensure effective communication
- * Manage personal safety and the safety of others
- * Conduct effective fatigue management and implement work/rest cycles

6. Management Objectives and Requirements

Implement operational plans that establish holding features across the entire perimeter of each fire resulting in minimized duration and physical extent of each, and maximizing the protection of:

- * Highway 138 corridor
- * Private timber lands
- * Bohemia Mining District, Fairview Comm Site, Chilcoot Repeater, and other infrastructure
- * Active USFS timber sales
- * Natural and cultural resources



Coordinate all fire suppression and repair work with Resource Advisors to protect natural and cultural values. Maintain effective relationships by ensuring timely information between the IMT, affected agencies, and the public.

7. Operational Period Command Emphasis

Several resources have been moved around the incidents, onto fires they have not previously seen, while some are seeing the same ground once again. Take a moment, prior to engaging on the firelines, to reassess your hazards. Some are identified, many are not, some are obvious while some are not. In particular around the Grizzly fire, mining hazards including hidden shafts and adits, loose gravel/rocks, abandoned tools and fencing, and more. Always assess if the hazards outweigh the values at risk. You are our highest value at risk.

8. Attachments (check if attached)

X	Organization List (ICS 203)	X	Medical Plan (ICS 206)	X	Fire Behavior
X	Assignment List (ICS 204)	X	Safety Message		
X	Communications Plan (ICS 205)	X	General Forecast		

9. Prepared by (Planning Section Chief)	10. Approved by (Incident Commander)
	

ORGANIZATION ASSIGNMENT LIST (ICS 203)

NORTHWEST TEAM 6				7. Operations Section			
1. Incident Name		GRIZZLY / DINNER / BRICE CREEK / CHILCOOT / RIDGE FIRES		Operations		DAN MARTIN / LARAE GUILLORY (T)	
2. Date		Time		Field Operations		JESS BOHNSACK / JOE PARR (T)	
9/17/2023		2000		Planning Operations		TRISH WALLACE / STEVE YOUNG (T)	
2a. Operational Period		From: 9/18/2023 0700 To: 9/18/2023 1900		Planning Operations		TIM NUTLEY / JAMES GRAHAM (T)	
3. Incident Commander(s) and Staff				Strategic Operations			
Incident Commander	TYSON ALBRECHT						
Deputy	ADAM VEALE / KEN PAUL / STEVE HAWKINS			DIVISION	BRICE CREEK	A/C	DOUG CATES
Safety Officer	ERIC RISDAL / SHANE THEALL			DIVISION	DINNER	D	LOGAN LAWSON
Safety Officer	AL AUGUSTINE			DIVISION	GRIZZLY	S/Z	RORY HIETT
Medical Unit	JOHN NOKES / CHRISTY FIELD (T)			DIVISION	CHILCOOT	E	NICK PETERS
Medical Unit	LAURA BELINO / PAUL SMITH (T)			DIVISION	CHILCOOT	H	JON MILES
Information Officer	JODIE BARRAM / JESSICA REED (T)			DIVISION	CHILCOOT	J	DAN COTHREN
Information Officer	NANCY JONES / JOE ANDERSON			DIVISION	RIDGE	W	SHILOW NORTON
Liaison Officer	KIM TITUS / GARRIT CRAIG			DIVISION			
Human Resources	AUDREY MATSUMONJI / K.C. BRIGGS (T)						
				Branch Director			
					DIVISION		
					DIVISION		
4. Agency/Organization Representative							
UMPQUA NATIONAL FOREST	DAVID ANDERSEN / JIMMY TYREE				DIVISION		
UMPQUA NATIONAL FOREST	MARK SOMMER (T)			BRANCH			
WILLAMETTE NF	MOLLY JUILLERAT			Branch Director			
BLM - EUGENE	DENNIS TEITZEL				DIVISION		
BLM - ROSEBURG	HEATHER WHITMAN				DIVISION		
ODF	CHRIS CLINE / JOHN FLANNIGAN				DIVISION		
DFA	PAUL RITTER			Branch Director			
LEAD READ	JED HANCOCK / BRADY DODD				GROUP		
USFS - SW IARR	MANUEL MARTINEZ				GROUP		
5. Planning Section							
Chief	KRISANN KOSEL				GROUP		
Deputy	SUE PUDDY / JOHN NONEMAM / SHANNA MCCARTY				GROUP		
Resource Unit	STEPHANIE FALCON / JAMES MAHAFFY (T)						
Situation Unit	KENT ELLETT / DAMIEN HAWLEY-JONES (T)				GROUP		
Status Check-in	AMY BURT (T) / DIANA HECKATHORN (T)				DIVISION		
GISS	EMILY RUSH / ROBIN BIGGS (T)				GROUP		
Fire Behavior	SARAH BUSH						
Meteorologist	STEVE BODNAR / SPENCER TANGEN (T)						
DMOB	MIKE HESTON (V)						
DOCL	DEIDRE SMITH (V)						
FOBS							
				7b. Air Operations Branch			
				Air Operations Director		DOUG LEDGERWOOD	
				Air Support Supervisor		KEVIN KOZAK	
6. Logistics Section				Air Attack Supervisor			
Chief	JOE NEER / CINDY WEDEKIND			Helicopter Coordinator			
Facilities Unit	ANNA TANKERSLEY / MIKE VAUGHN (T)						
Supply Unit	JON BYERLY						
8. Finance/Administration Section							
Ground Support Unit	TODD GRIFFIN / BRANDON SIEDERS			Chief		JEN KNUTSON / KEL'S MARTINEZ	
Ground Support Unit	KEVIN PALM / MIGUEL MACIAS (T)			Chief		JANET MACDONALD (T) / PAM ARBOGAST (T)	
Communications Unit	TROY MCMILLIAN			Time Unit		KRISSE MITCHELL / KEVIN GU (T)	
ITSS	MATT MATSON / JAMES BROWN			Equipment Time		PEGGY ROBERTS / SABRINA BLASINGAME	
Food Unit	MIKE SPATZ / JOE DEPAOLA (T)			Equipment Time		JUSTIN KRIEG (T)	
Food Unit	REE ELLA VONBORSTEL			Personnel Time		KATHY HOTTLE / NANCY SHADOMY	
Security Unit	RONNIE OROPEZA			Personnel Time		DARCI DRINKWATER (T) / JOSEPH TOTTON (T)	
Ordering Manager	DONNA DIXON / NOE REYES / MICHAEL SMITH (T)			Comp/Claims Unit		DIANNA PRIOR	
Receiving & Distribution	KARLIS LAZDA / ED JENSEN			Cost Unit		ANTHONY JOHNS	
Base Camp Manager	MATT AXE (T) / BEN WALKER (T)			ICPI		LEO ROBB	
9. Prepared by:	JAMES MAHAFFY		Date: 9/17/2023	Signature:		Sue Puddy, PSC2	



Fire Weather Forecast



FORECAST NO: 19
FORECAST FOR: Monday Day & Night Shift
SHIFT DATE: 09/18/2023
DATE AND TIME ISSUED: 09/17/2023 at 2000

NAME OF FIRE: Umpqua Fires
UNIT: OR-UPF
SIGNED: Steve Bodnar - Incident Meteorologist
 405-203-9850 (cell) / stephen.bodnar@noaa.gov

WEATHER DISCUSSION: A cold front slides through the region tomorrow ushering cooler temperatures and clearing of the midlevel clouds. The air mass will start off very dry within thermal belts and moisten throughout the day. Surface inversions will be present in the morning trapping smoke near the surface. As the inversions lift around 1200, smoke may become trapped under a stable layer roughly 3000 feet off the surface. A very dry airmass moves into the region Monday night but looks to remain at elevations of 5500 feet and higher. This will promote strong radiational cooling and chilly overnight lows. May want to consider an extra blanket for Tuesday morning.

MONDAY:

WEATHER: Mostly cloudy in the morning becoming mostly sunny in the afternoon. Hazy.

	Max Temperatures	Minimum Relative Humidity
Valleys (2500-3500 ft)	76-79° (Down 10)	27-34% (Up 8-10%)
Ridges (3500-4500 ft)	68-74° (Down 10)	15% AM > 40-50% (Up 20-25%)

20-FOOT WINDS:

Chilcoot: Drainage 0 to 4 mph through 1100, becoming northwest 5 to 9 mph. Local gusts 15 mph on ridge.
 Grizzly: northwest 3 to 6 mph lower drainage, 8 to 11 mph gust 18 mph upper drainage > north/northwest ~1600
 Brice Creek: Ridgelines northwest 4 to 7 mph. Shelter drainages variable to upslope 2 to 6 mph.
 Dinner/Ridge: Northwest 6 to 10 mph gust 15 to 18 mph.

AVIATION: Smoke from Grizzly/Brice Creek trapped in valley inversions through 1300, local visibility 2-5SM.
CWR (≥ 0.25"): 0% **LAL:** 1 **HAINES:** 4 **INVERSION BREAK/MH:** 1200 hrs/ 3000 ft
CAMP FORECAST: **Strader ICP:** 78F **Sharps Creek Base Camp:** 74F

MONDAY NIGHT:

WEATHER: Clear, strong surface inversions. Chilly temperatures in the valleys. Very dry around 5500 feet.

	Min Temperatures	Maximum Relative Humidity
Valleys (2500-3500 ft)	42-47° (Down 10)	70-85% - (Up 10-15%)
Ridges (3500-4500 ft)	47-52° (Down 9)	50-60% - (Up 20-25%)

20-FOOT WINDS:

Grizzly: North 5 to 10 mph in the evening becoming northeast 1 to 5 mph overnight.
 Chilcoot: North/northeast 4 to 8 in the evening decreasing 1 to 5 mph overnight.

CWR (≥ 0.25"): 0% **LAL:** 1 **INVERSIONS:** Strong inversions overnight setting after 2100
CAMP FORECAST: **Strader ICP:** 39F **Sharps Creek Base Camp:** 43F – Fog possible

EXTENDED OUTLOOK: The air mass becomes drier on Tuesday with seasonal temperatures. A deep low carves into the Northwest Wednesday and Thursday and slides east on Friday. The track of the low will push breezy to gusty NW/N/NE winds across the fire Wednesday into Thursday with decent moisture and small threat for light showers. Winds weaken and become light from the east Friday but this will allow for warming and drying conditions. Rain chances start to increase early next week. **Please send weather observations to the IMET – text # above.**

FIRE BEHAVIOR FORECAST

FORECAST NUMBER: 19	TYPE OF FIRE: Wildfire
FIRE NAME: Umpqua Fires	OPERATIONAL PERIOD: Day & Night shifts, September 18, 2023
DATE ISSUED: Sunday September 17, 2023	TIME ISSUED: 19:30 Hours
UNIT: Umpqua National Forest	SIGNED: Sarah Bush – FBAN

INPUTS

WEATHER SUMMARY: See Fire Weather Forecast for Details

FUELS:

Fuels in the fire areas are primarily composed of *Timber Litter*, and *Timber Understory with moss/lichen present in most stands*. Mature conifer stands with western hemlock and Douglas fir present, generally have heavy surface fuel loading. 30 to 50+ year old second growth conifer stands contain needle litter and some down woody debris. Brush and reproduction present in areas with less dense canopies.

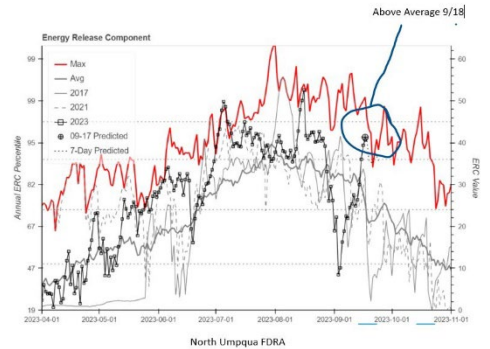
Dinner, Brice, Grizzly- Forecast -ERC 93rd percentile. Yesterday's obs. **1hr-5%, 10hr-8%, 100hr-10%, 1000hr-15%**
 Chilcoot & Ridge- Forecast -ERC 96th percentile. Yesterday's obs. **1hr-8%, 10hr-11%, 100hr-11%, 1000hr-15%**

OUTPUTS

FIRE BEHAVIOR GENERAL:

One more night with poor overnight humidity recoveries combined with low daytime humidities will extend the burn period for areas with active fire, especially in Divs J and S/Z. Conditions will remain dry and slightly cooler. The 1000-hr fuel moisture will be lower, making them more available to consume and preheat canopies. Expect lichen to be available to burn with potential for torching when the RH gets below 30%.

One and 10-hour fuels are available to burn but have responded to the higher RH. The 100-hr fuels continue to lag and are more available to burn. Creeping and backing will be the most common surface fire behavior in areas with active burning.



FIRE BEHAVIOR SPECIFIC:

Dinner, Brice, Grizzly, Chilcoot, and Ridge

Chilcoot fire (Div J) can expect up to 6' flame lengths and less than 6 ch/hr ROS where there is active fire. Fire spread potential will be largely dependent on location, aspect, and exposure/sheltering. Ten and 100-hr fuels in exposed stands will be available to carry fire throughout the day although at moderated rates of spread due to low wind speeds. Expect moderated fire activity on **Brice (Div A)** with creeping fire behavior as unburned pockets consume fuels. The potential of isolated torching on **Div J** and **A** will be much lower tomorrow due to cooler and moister conditions.

Ridge (Div W) and Dinner (Div D) fires should experience minimal fire behavior and isolated to interior portions of the fire today. Expect backing fire with a moderate level of smoke production on **Grizzly (Div S/Z)** as the heavy dead and down consumes. Fire will back towards the Champion Ck Rd. If fire crosses Grizzly creek to the east, wind/slope alignment would push fire ESE towards the Noon Day Road, 2212 at 6ch/hr. The area would exhibit up to 6'FL without suppression actions.

Spotting distance up to 0.2 mi, Probability of Ignition- 40% shaded and overnight; 65% unshaded

Initial Attack: In the event resources respond to a new start, recognize that fuels, topography, and conditions may be different than areas you have previously worked in.

AIR OPERATIONS: Inversion will limit visibility and ability to fly on Brice and Grizzly until early afternoon.

SAFETY

Base all actions on current and expected behavior of the fire (evaluate your situation and the fire activity – anticipate rate of change, consider “what-if’s”, establish trigger points).

AIR OPERATIONS SUMMARY 220	Prepared/Approved: Doug Ledgerwood	Prepared: 9/17/2023	Prepared Time: 1800 hrs.
1. INCIDENT NAME: UMPQUA FIRES	2. OPERATIONAL PERIOD 09/18/2023	START TIME: 0700	SUNRISE: 0655
		END TIME: 1900	SUNSET: 1917

3. REMARKS (Safety Notes, Hazards, Air Operations Special Equipment, etc.):
Smoky conditions * Steep terrain * Shadow effects
 Only use approved dip sites. Do not cross contaminate water sources without sanitizing bucket/snorkel. All GPS data to be collected in DEGREES MINUTES, DECIMAL MINUTES.
 Avoid foam within 300' of waterways or bodies of water. Notify AOBD if this is not achieved
 Aircraft costs daily to: 2023.chilcoot.finance@firenet.gov and cc to 2023.chilcoot.airops@firenet.gov

4. READY ALERT AIRCRAFT:
 N234BH Yellowstone Short Haul:
 @Grants Pass.
 N38HX Teton Short Haul @
 Walterville.

5. TFR: #3/9930 (A30) North
 Freq 121.3750
 Surface to 9000ft MSL
 Operational 1500-0400 UTC
TFR: #3/7750 (A51) South
 Freq:132.525
 Surface to 8500 MSL
 Operational 1630-0400 UTC

6. PERSONNEL	NAME	PHONE #	7. FREQUENCIES		AM	FM
Glide Helibase						
AOBD	Doug Ledgerwood	541-852-0633	A/A TFR and Primary North		121.3750	
ASGS	Kevin Kozak	360-280-6714	A/A TFR and Primary South		132.525	
			A/G Primary (A6)			167.1500
			A/G Secondary (A-7)			170.2625
HEBM	Matt Quezada	760-379-6995	Deck	Tone-156.7(TX/RX)		163.1000
HEBM(t)	Mario Melendez	661-912-8235				
ORRIC	Aircraft Desk	541-957-3325	IA A/G 49 USFS			168.0375
UAO	Jim Dotson	307-413-2024	IA A/G 81 USFS			166.9500
			VMEB29	Tone 156.7 (TX/RX)		155.3475
			CTAF			122.8
			Air Guard	Tone 110.9 (TX)		168.6250

8. FIXED-WING Avail/ Type/ Make-Model/ N#/ Base
AIRTANKERS: ORDER THRU ATGS
ATGS – order through Roseburg Dispatch
 Landing Sites on Fire: See pilot map
 Layng Cr Helispot: 43°42.698'N X 122°42.114'W 1224ft
 Cottage Grove S61: 43°48.246'N X 123°1.923'W 641ft
 Glide Helibase 43° 18.922' X 123° 4.415'

Tank Dips: See Pilot Map

LAKE DIPS:
 Gertrude Lk 43°35.698'N X 122°32.452'W 3990 ft
 Crawfish Lk 43°37.502'N X 122°42.222'W 4794 ft
 Crystal Lk 43°35.602 N X 122°38.655 W 4650 ft
 Elephant Lake 43°35.742 X 122°39.237 W 5126 ft

FAA N#	T Y	MAKE/ MODEL	BASE	START	AVAIL	REMARKS	FAA N#	T Y	MAKE/ MODEL	BASE	START	AVAIL	REMARKS
N274TH (A-9)	1	UH-60	Glide	0700	0800		32HX (A-19)	3	AS 350	Glide	0700	0800	11 personnel
526MW (A-10)	1	KMAX	Glide	0700	0800								
N357KA (A-57)	1	KMAX	Glide	0900	0930								
N933CH(A-39)	2	Bell 205 A1	Glide	0700	0800	15 personnel	NR474A	3	UR-31(A-26)	Glide	0700		Ryan Gregg Mngr: 360-852-2296
H377PA(A-20)	2	Bell 212	Glide	0700	0800	8 personnel							

SAFETY

SITUATIONAL
AWARENESS

OVER

L.C.E.S

MISSION

“Chance takers are accident makers.” ~Author Unknown

Normalization of Risk:

Also known as *the normalization of deviance* and *risk normalization*, this common behavior could be creating risk exposures. At some point, a conscious decision to accept a risk not normally taken leads to trying it again. Because you ‘got away with it’, it is accepted and eventually, the risk-taking behavior becomes standard.

A slow creep to accepting risks that were not originally acceptable can happen to anyone or to an entire organization if it isn’t guarded against. Fire behavior is still a factor, fuels continue to dry out even though the weather is cooler. Gravity hazards and driving remain some of our greatest risks. Please consider risk vs reward. With a long season still ahead of us, a little more time and deliberation prior to engagement is warranted. Stay cool, stay hydrated, and work at an appropriate pace.

It’s time to Re-evaluate Risk:

- What contributes to elevated risk?
 - Current weather conditions may be conducive to elevated Fire Risk.
 - Recent Fire Behavior has been benign on some divisions?
 - Being patient and deliberate in our actions will win the day.
- Are external pressures dictating pace over safety?
- Is the exposure, commensurate with the needs of the mission?

Root Causes

- Sense of Urgency
- Inadequate Resources
- Mission Creep and Tunnel Vision
- Complacency, taking shortcuts
- Culture

Examples

- Challenger-Known Defective O-Rings-4 different flights noted damage prior
- Columbia-Foam Shielding Falling from the External Tank, previously Documented
- Health care industry, driving while texting and many others.

Safety Officers: Everyone is a Safety Officer!

LOGISTICS PAGE

Strader ICP:

Email orders to 2023.chilcoot.ordering@firenet.gov

Location	373 French Creek Road Glide OR, 97443
Supply	Hours: 0600 - 2130
Ground Support	Hours: 0600 - 2130
Fuel Truck	Hours: 0630 - 2100
Weed Wash	Hours: 0700 - 2000
Meals	Hours: Breakfast – 0600 - 0930 & Dinner – 1800 - 2100
Laundry	Hours: 0500 - 2200
Showers	Hours: 0500 - 1200 & 1400-2200

Sharps Creek Base Camp:

Email orders to 2023.dinner.ordering@firenet.gov

Location	73792 Sharps Creek Road Dorena OR, 97434
Supply	Hours: 0600 - 2130
Ground Support	Hours: 0600 - 2200
Fuel Truck	Hours: 0600 - 2200
Weed Wash	Hours: 0700 - 2000
Meals	Hours: Breakfast – 0600 - 0830 & Dinner – 1700 - 2030
Laundry	Hours: 0600-0900 1800-2100 drop off at Ground Support for 24 hour return
Showers	Hours: 0600 - 1200 & 1400 - 2200

1-Mile Hose Kit for PNW Team 6

Please note this is what will be sent out with an order for a 1- mile hose kit from supply with Team 6.

NFES	QUANTITY	ISSUE	DESCRIPTION
1239	50	LG	1 1/2" Hose
1238	25	LG	1" Hose
1016	50	LG	3/4" Hose
0010	25	EA	Reducers 1 1/2" to 1"
0733	20	EA	Reducers 1" to 3/4"
0231	25	EA	1 1/2" Gated Wyes
0259	20	EA	1" Gated Wyes
0904	25	EA	3/4" Gated Wyes
0024	25	EA	Forrester Nozzles
0136	25	EA	Garden Nozzle
0738	25	EA	3/4" Shut Off
0664	2	EA	Fold a Tank 1500 gal
3870	2	EA	Mark III Kits
0606	3	EA	Can, safety
7724	3	EA	Oil, 2 stroke mix
0805	3	EA	Tags, 2 stroke
0148	2	EA	Pump, Mk III

INCIDENT RADIO COMMUNICATIONS PLAN (ICS 205)

Controlled Unclassified Information //Basic

1. Incident Name:		2. Date Prepared:		3. Operational Period:						
CHILCOOT/GRIZZLY/RIDGE/BRICE/DINNER FIRES		Date: 09/17/23		Date/Time from: 09/19/23 0700 HRS						
Date: 09/17/23		Date/time from: 09/19/23 0700 HRS		Date/Time To: 09/19/23 0700 HRS						
4. Basic Radio Channel Use:										
Zone Group	Ch #	Function	Channel Name/Trunked Radio System Talk Group	Assignment	RX Freq	RX Tone/NAC	TX Freq	TX Tone/NAC	Mode (A.O. 0<M)	Remarks
	1	TACTICAL	TAC 1	DIV A AND J	168.0500	167.9	168.0500	167.9	A	DIVISION ALPHA AND JULIET TACTICAL
	2	TACTICAL	TAC 2	DIV C AND E	168.2000	167.9	168.2000	167.9	A	DIVISION CHARLIE AND ECHO TACTICAL
	3	TACTICAL	TAC 3	DIV D AND H	168.6000	167.9	168.6000	167.9	A	DIVISION DELTA AND HOTEL TACTICAL
	4	TACTICAL	TAC 4	DIV S / Z	166.7250	167.9	166.7250	167.9	A	DIVISION SIERRA / ZULU TACTICAL
	5	TACTICAL	TAC 5	DIV W	166.7750	167.9	166.7750	167.9	A	DIVISION WHISKEY TACTICAL
	6	TACTICAL	TAC 6	ROAD MAINTENANCE	168.2500	167.9	168.2500	167.9	A	ROAD MAINTENANCE TACTICAL
	7	COMMAND	CMD 7	COMMAND	169.7500	167.9	167.1000	167.9	A	COMMAND 7-LOCATED ON SCOTT MOUNTAIN
	8	COMMAND	CMD 8	COMMAND	173.7125	167.9	162.6000	167.9	A	COMMAND 8- LOCATED ON PIG IRON LOOKOUT
	9	COMMAND	CMD 9	COMMAND	173.6000	167.9	169.4625	167.9	A	COMMAND 9- LOCATED ON CHILCOOT MOUNTAIN
	10	COMMAND	CMD 10	COMMAND	169.8375	167.9	162.4625	167.9	A	COMMAND 10- LOCATED ON LOOKOUT MOUNTAIN
	11	COMMAND	CMD 11	COMMAND	170.0625	167.9	162.4375	167.9	A	COMMAND 11- LOCATED ON FAIRVIEW LOOKOUT
	12	FOREST REPEATER	CHILCOOT	ALL RESOURCES	170.5500	103.5	164.8000	192.8	A	UMPQUA CHILCOOT REPEATER
	13	AIR TO GROUND	A/G PRI	AIR TO GROUND PRIMARY	167.1500	NONE	167.1500	NONE	A	AIR TO GROUND OPERATIONS, PRIMARY
	14	AIR TO GROUND	A/G SEC	AIR TO GROUND SECONDARY	170.2625	NONE	170.2625	NONE	A	AIR TO GROUND OPERATIONS, SECONDARY
	15	AIR TO GROUND	MMED29	MEDICAL	155.3475	156.7	155.3475	156.7	A	MEDICAL USE ONLY
	16	AIR GUARD	AIR GUARD	ALL DIVS	168.6250	NONE	168.6250	110.9	A	EMERGENCY USE ON LY
5. Special Instructions:										
6. Prepared By (Communications Unit Leader)				Name: Berry Mathias						
Communications staffed 0600-2200 hours. Phone: (949) 648-1591				IAP Page						
Signature: <i>Berry Mathias</i>				Date/Time: 09/17/23 17:30 HRS						

Finance Email:

- 2023.dinner.finance@firenet.gov
- 2023.chilcoot.finance@firenet.gov

FINANCE CHECK IN:

- 2023.dinner.finance@firenet.gov
- 2023.chilcoot.finance@firenet.gov



Finance can be reached at:

Contractors: 971-713-0374; Overhead: 971-727-5250

COMP/CLAIMS – 971-245-0248

Agency Overhead	Agency AD's / EFF's	Agency Crews	Contract Crews / Equipment	Cooperators
Resource Orders (RO)	Resource Orders (RO)	Resource Orders (RO)	Resource Orders (RO)	Resource Orders (RO)
Signed CTR	Casual Hire Form	Manifest	Manifest	Agreement
	Signed CTR	Signed CTR	Agreement	Signed Shift Ticket / CTR
			Inspections	
			Signed Shift Ticket / CTR	

Tip on a Complete CTR / Shift Ticket:

- Resource Order Number
- Correct dates and work time
- Total hours added for each day
- Signed by Division or above (Include O-# by signed official)
- Justification are required for all:
 - Hazard Pay – Hazard for fighting uncontrolled fire on fireline.
 - Excessive shifts (Example: air travel to incident, burnout operations, initial attack)
 - No meal break shown

NOTE: ON THE TOP OF YOUR CTR OR SHIFT TICKET, PLEASE INDICATE THE FIRE YOU WERE ORDERED ON. ADD IN REMARKS SECTION ON CTR OR SHIFT TICKET, THE "FIRE NAME" THAT YOU WORKED ON.

Information Section

Do you or the public need to reach the PIOs?

Phone: (541) 900-5862

Emails: Brice Creek/Dinner/Grizzly: 2023.dinner@firenet.gov

Chilcoot/Ridge: 2023.chilcoot@firenet.gov

Please email us your photos! (And don't forget your PPE 😊)



Chilcoot and Ridge Fires Information



Brice, Dinner, and Grizzly Fires Information

Scan the codes above to access links to each of the official sources of information on all five of the Umpqua Fires—from InciWeb to Facebook to email addresses, it's all there!

Sharps Creek (Dorena PO)

Dorena Post Office: C/O (Your Name)
75694 Wicks Road
Dorena, OR 97434



Notes on Dorena PO pick-up:

Persons picking up the mail must present ID for their mail.

Business hours:

9 AM- 1 PM Monday -Friday

11 AM- 12 PM Saturday

(Closed Sundays)

Strader ICP

(North Umpqua Ranger District):

Address your mail to:

C/O (Chilcoot Fire, Your Name, Resource Number)

North Umpqua Ranger District

18782 North Umpqua Highway

Glide, OR 97443

Notes on Strader pickup:

PIOs are checking mail daily; come visit our PIO trailer to get your items!



Call or visit us if you've lost something!
We have a PIO shops in both Glide and Sharps Creek



Human Resource Message

Umpqua Fires September 18, 2023

Teamwork



We are not a team because we work together.

We are a team because we respect, trust, and care for each other.

Vala Afshar

We are all in this together. If we see someone is down reach out to them and help to build them up. If someone is up, bring others with you.

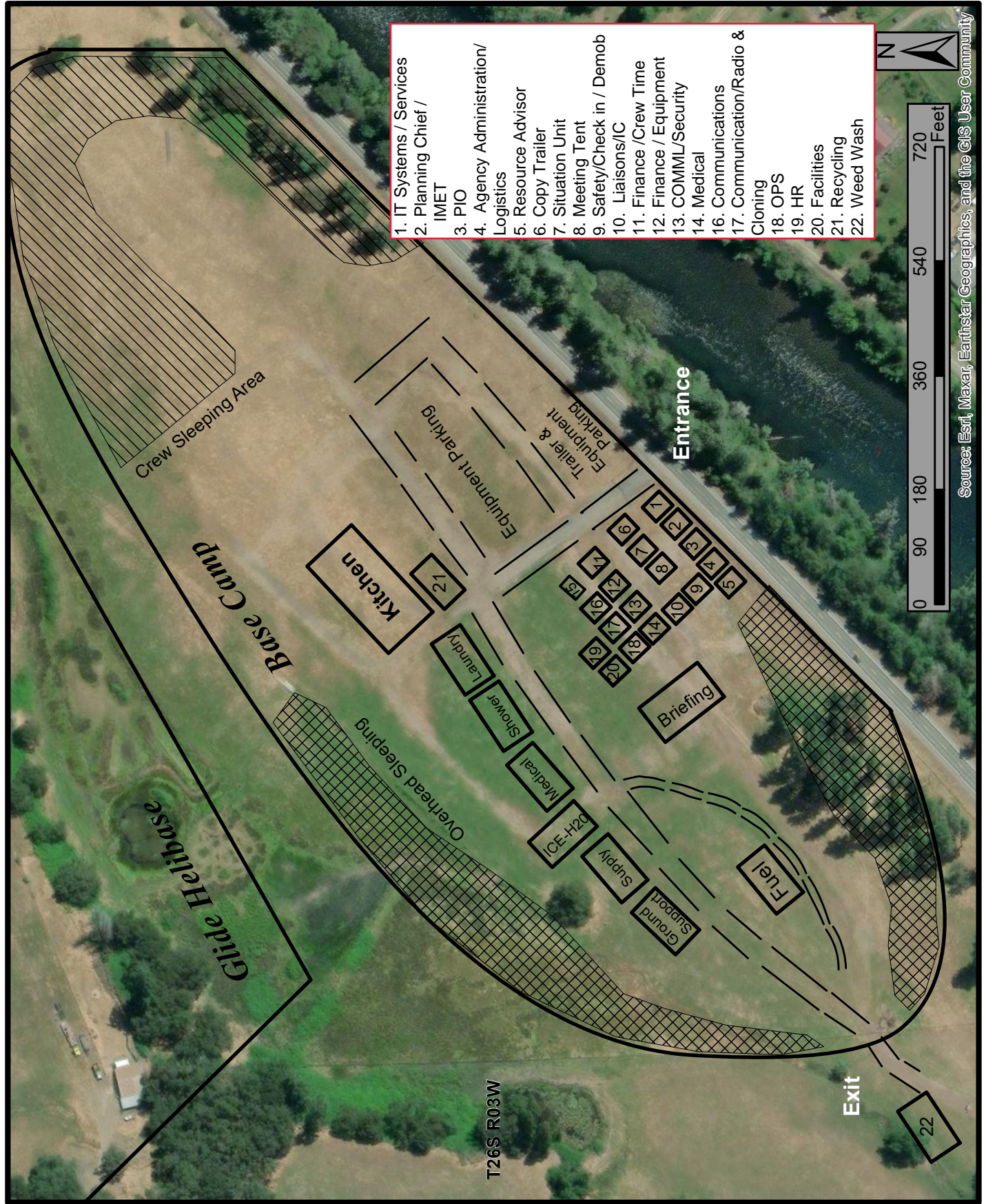
You can reach me by text or phone call at 503-575-8547. You can visit me in my yurt on the SW side of camp.

Have a safe shift and have a great day!

503-575-8547

Audrey Matsumonji
Human Resource Specialist

Chilcoot ICP Basecamp Map



Extensions and Crew Swaps – NW 6

This is the Team Standard Operating procedure based on national policy

- **Resources may be demobed, regardless of crew status, if it is no longer needed.**
- Contract Crews are generally not extended unless replacement resources are scarce. Crews may swap crew members if needed by utilizing the crew swap form at the QR code below.
- Resources ordered on 'O' numbers cannot swap crew members (exception - some medical resources). These resources can extend depending on availability and needs of the incident. See Plans for a resource extension form.

Contracted Fireline Equipment Crew Swap Procedure

- Contract equipment may stay on the incident until it is no longer needed, a maximum dollar amount is reached, or replacement crew members cannot be provided.
- It is the responsibility of the contract owner to track their crew members and ensure they maintain proper work/rest ratios. The IMT assumes contracted equipment will swap crew members as needed to provide adequate rest for their employees.
- Non-fireline equipment personnel (like hand wash stations) are not tracked other than a current onsite contact.
- If replacement crew members cannot be provided, this must be documented on an ICS-213 and provided to Operations and Plans at least 72 hours prior to the 14th workday. The resource will be demobed after 14 shifts OR an extension form may be completed based on operational need, see Plans for this form.
- Crew swaps **MUST** be tracked through the below QR code form as soon as known, **no later than 1800** on the day prior to the swap. If the new crew member is the primary operator and any information in the IAP is incorrect, correct information **MUST** be provided to the Division Supervisor immediately following the operational briefing/division breakout.
- We prefer all members of a resource swap at once if possible. The crew swap form will need to be filled out for **each individual crew member**.
- Replacement workers must provide proof of current annual training upon request.
- The IMT will NOT track a last workday for these resources in the IAP unless:
 - It was determined to be excess to the needs of the incident and will demob
 - A resource was unable to provide replacement workers and will demob

QR code link to Umpqua Fires FTP page, then find button named **Crew Swap Form**



Please contact Plans after the briefing, at their office at either camp, or at Check-in if you have questions or wish to understand how your last workday/demob date was determined.



CHECK-IN PROCESS - ALL RESOURCES

**Grizzly (OR-UPF-000341) Dinner (OR-UPF-000357) Brice Creek (OR-UPF-000359)
Chilcoot (OR-UPF-000345) Ridge (OR-UPF-000346)**

STEP 1. Scan the QR code to fill out and submit the online check-in form.

- Have your resource order ready as many questions reference it.



STEP 2. Email your MANIFEST (if appropriate) depending on what incident you are assigned to. Include your request number in the subject line (e.g, E-118, O-48).

- If you are assigned to the Grizzly, Dinner or Brice Creek incidents, email to 2023.dinner.checkin@firenet.gov
- If you are assigned to the Chilcoot or Ridge incidents, email to 2023.chilcoot.checkin@firenet.gov

STEP 3. See Finance page of IAP for further instructions on how to check in with finance.

STEP 4. Complete vehicle inspection as instructed in your resource order, including contract inspection as needed.

If you have any issues, please contact Check-in at (208) 891-6286 or by email at 2023.chilcoot.checkin@firenet.gov or 2023.dinner.checkin@firenet.gov

Umpqua Fires

Demob Check-Out Instruction Form

Pick up Demob Check-Out form at BRIEFING (IAP) or PLANNING to begin Process

RO # _____ Resource Name _____ Fire: _____ Date: _____

Initial

Follow these steps in the order below:

- _____ 1. **Weed Wash** – ALL line resources that went off-road will need to go through a Weed Wash in your specific fire location. **If not needed, proceed to step 2.**
- _____ 2. **Ground support** – Contractors must stop to sign their release inspection. The inspection is optional for agency resources. **Agency resources proceed to step 3.**
- _____ 3. **Supply** – Return any items you checked out. All units must have an initial from SUPPLY confirming all equipment has been returned.
- _____ 4. **Communications** – Return any items you checked out. All units must have an initial from COMMUNICATIONS confirming all radio equipment has been returned.
- _____ 5. **Finance** – Proceed to finance to receive your final timesheet. Having ALL your times turned in and up to date will GREATLY speed up the process.
- _____ 6. **Demob – Final step.** Return completed Demob Check-Out form and any Documentation to Demob/Check-in. Documentation can also be emailed to 2023.chilcoot.docs@firenet.gov Contact Demob at 509-432-6143 with your estimated time of departure, arrival time and destination. You will not be released from the incident with Dispatch until this is completed.

ALL AIR TRAVELERS

Submit your request 72 hours prior to flight date through the QR Code on the IAP Cover. Call 509-432-6143 for any questions or assistance.

NIGHT SHIFT PERSONNEL

All night shift personnel coming off the line will be required to meet work/rest requirements before completing the Demob process.

EXTENSIONS AND CREW SWAPS

All extension/crew swap processes **should be done at least 48 hours** before your last working day to help facilitate Operational resources and the Demob process.

Demob List for Monday 09/18/2023

DINNER – BRICE CREEK - GRIZZLY FIRES				
O-36	0700	SOFC	MCCONNELL, RICHARD	DINNER
O-43	0800	EQPM	RHUE, WILLIAM	DINNER
O-103	1800	SEC2	SMITH, FRANCISCO	DINNER
CHILCOOT - RIDGE FIRES				
O-204	0800	HRSP	BUCHHOLZ, TODD	CHILCOOT
O-208	0830	BCMG	AXE, MATHEW	CHILCOOT
O-67	2000	EQPM	CONLON, JAMES	CHILCOOT

Demob List for Tuesday 09/19/2023

DINNER – BRICE CREEK - GRIZZLY FIRES				
E-12	0800	VROL	MARK JONES	GRIZZLY
O-4	0730	TFLD	MASTERS, JACK	GRIZZLY
O-125	0800	SEC2	MITCHELL, JEFFREY	DINNER
CHILCOOT - RIDGE FIRES				
O-57	0700	EMTF	MARTINEZ, MELISSA	CHILCOOT
O-58	0715	EMTF	CAUDILL, SOREN	CHILCOOT
O-62	0730	EMPF	KAISER, JEFFREY	CHILCOOT
O-64	0745	EMPF	DOBSON, RICH	CHILCOOT
O-184	0815	HEQB	NORTON, SHILOW	CHILCOOT
O-209	0830	WFM1	STORM PEAK	CHILCOOT
O-210	0845	MEDL	NOKES, JOHN	CHILCOOT
O-217	0900	SECG	PERRY, MICHAEL	CHILCOOT
O-218	0915	FFT2	GROS, JACOB	CHILCOOT

Demob List for Wednesday 09/20/2023

DINNER – BRICE CREEK - GRIZZLY FIRES				
C-8	0700	CR2I	POTOMIC RIVER	GRIZZLY
O-71	0700	COMT	CAMPBELL, DUNCAN	DINNER
O-122	0730	SECM	HUFFMAN, RAMOND	DINNER
CHILCOOT – RIDGE FIRES				
E-112	0730	WTT1	HYDROTACTICAL	CHILCOOT
O-63	0800	EMPF	GIBSON, TOM	CHILCOOT
O-73	0830	RES	ROUGH COUNTRY	CHILCOOT
O-191	1900	COMT	ROSS, JAMES	CHILCOOT
O-277	1200	DMOB	HESTON, MIKE	CHILCOOT

Division/Group Assignment List (ICS 204 WF)
Controlled Unclassified Information//Basic

1. Incident Name:				3.		
UMPQUA FIRES				Branch:	Division/Group	
2. Operational Period: DAY						
Date/Time From: 09/18/2023 0700 MON		Date/Time To: 09/18/2023 1900 MON		BRICE CREEK A/C		
4. Operations Personnel						
OPERATIONS CHIEF		DAN MARTIN LARAE GUILLORY (T)		BRANCH DIRECTOR		
SAFETY OFFICERS		ERIC RISDAL SHANE THEALL		DIVISION/GROUP SUPERVISOR DOUG CATES		
5. Resources Assigned this Period						
Strike Team / Task Force / Resource Designator	LWD	Leader	Number Persons	Drop Off PT./Time	Pick Up PT./Time	
O-240.32 SOF2	09/26	AL AUGUSTINE	1	SHARPS CREEK BASECAMP/0700	SHARPS CREEK BASECAMP/1900	
O-4 TFLD	09/19	JACK MASTERS	1	SHARPS CREEK BASE CAMP/0700	SHARPS CREEK BASE CAMP/1900	
O-16 TFLD (T)	09/30	BRIAN WHETSLE	1	SHARPS CREEK BASE CAMP/0700	SHARPS CREEK BASE CAMP/1900	
O-240.69 TFLD (T)	09/25	MICHEAL DAKE	1	SHARPS CREEK BASE CAMP/0700	SHARPS CREEK BASE CAMP/1900	
O-14 HEQB	09/29	ETHAN REDDICK	1	SHARPS CREEK BASE CAMP/0700	SHARPS CREEK BASE CAMP/1900	
C-17 CR2I VALE SRV #12	09/23	JULIAN I JACOBO	24	SHARPS CREEK BASE CAMP/0700	SHARPS CREEK BASE CAMP/1900	
C-18 CR2I CENTRAL OREGON #05	09/24	NICHOLAS FOEY	20	SHARPS CREEK BASE CAMP/0700	SHARPS CREEK BASE CAMP/1900	
C-55 CRW2 IRON MOUNTAIN	09/29	FRANSCISCO CISNEROS	20	SHARPS CREEK BASE CAMP/0700	SHARPS CREEK BASE CAMP/1900	
E-10 ENG6 THREE STRIPES		TIMOTHY PEARSON	3	SHARPS CREEK BASE CAMP/0700	SHARPS CREEK BASE CAMP/1900	
E-25 ENG6 NORTH PACIFIC		PORFIRIO SERVIN	3	SHARPS CREEP BASE CAMP/0700	SHARPS CREEP BASE CAMP/1900	
E-26 ENG6 FIRST STRIKE		HOLDEN HILLIKER	3	SHARPS CREEK BASE CAMP/0700	SHARPS CREEK BASE CAMP/1900	
E-194 ENG6 DIAMOND FIRE		DANIEL EMEL	3	SHARPS CREEK BASE CAMP/0700	SHARPS CREEK BASE CAMP/1900	
E-2 WTS2 RHY-DEM		RUSSEL ROBINSON	1	SHARPS CREEK BASE CAMP/0700	SHARPS CREEK BASE CAMP/1900	
E-18 WTS2 IRELAND BROTHERS		ADAM FRASER	1	SHARPS CREEK BASE CAMP/0700	SHARPS CREEK BASE CAMP/1900	
8. Division/Group Communication Summary						
Function	Channel	RX Frequency N/W	RX Tone/NAC	TX Frequency N/W	TX Tone/NAC	Mode
TACTICAL	TAC 1	168.0500	167.9	168.0500	167.9	A
TACTICAL	TAC 2	168.2000	167.9	168.2000	167.9	A
COMMAND	CMD 11	170.0625	167.9	162.4375	167.9	A
AIR TO GROUND	A/G PRI	167.1500		167.1500		A
AIR TO GROUND	A/G SEC	170.2625		170.2625		A
AIR GUARD	AIR GUARD	168.6250		168.6250	110.9	A
9. Prepared By (Resource Unit Leader)		Approved By (Planning Section Chief)		Date	Time	
JAMES MAHAFFY RESL (T)		KRISANN KOSEL		09/17/2023	2200	

Division/Group Assignment List (ICS 204 WF)
Controlled Unclassified Information//Basic

1. Incident Name:			3.			
UMPQUA FIRES			Branch:		Division/Group	
2. Operational Period: DAY			BRICE CREEK A/C			
Date/Time From: 09/18/2023 0700 MON		Date/Time To: 09/18/2023 1900 MON				
4. Operations Personnel						
OPERATIONS CHIEF		DAN MARTIN LARAE GUILLORY (T)		BRANCH DIRECTOR		
SAFETY OFFICERS		ERIC RISDAL SHANE THEALL		DIVISION/GROUP SUPERVISOR		DOUG CATES
5. Resources Assigned this Period						
Strike Team / Task Force / Resource Designator		LWD	Leader	Number Persons	Drop Off PT./Time	Pick Up PT./Time
E-10000 DZR2 R & L			CHAD SCOFIELD	2	SHARPS CREEK BASE CAMP/0700	SHARPS CREEK BASE CAMP/1900
E-1 VUTV TOP GUN					SHARPS CREEK BASE CAMP/0700	SHARPS CREEK BASE CAMP/1900
E-16 VUTV TOP GUN					SHARPS CREEK BASE CAMP/0700	SHARPS CREEK BASE CAMP/1900
O-129 REAF		09/23	JEDIDIAH HANCOCK	1	SHARPS CREEK BASE CAMP/0700	SHARPS CREEK BASE CAMP/1900
O-29 REMS BEYOND THE EDGE (REMS 1)		09/26	JOE DECKER	4	SHARPS CREEK BASE CAMP/0700	SHARPS CREEK BASE CAMP/1900
E-193 AMB2 FRONT LINE (AMB 55)		09/29	LANCE PUIG	2	SHARPS CREEK BASE CAMP/0700	SHARPS CREEK BASE CAMP/1900
6. Control Operations/Work Assignments:						
<p>TASK: Continue to hold, secure, and mop-up control lines. Monitor conditions in preparation to implement firing plan in direct areas. Utilize aircraft as necessary to moderate fire behavior. Snag along open roads.</p> <p>PURPOSE: Prevent fire from impacting values at risk, including communities to the west, commercial timberlands and T&E habitat. Provide for firefighter and public safety.</p> <p>END STATE: Fire is kept north of 22 RD, south of the 2216 RD, and east of the 732 RD. To protect the values at risk through the remainder of the fire season.</p>						
7. Special Instructions:						
<ul style="list-style-type: none"> All resources assigned to this division will add BRICE CREEK FIRE to all CTR and SHIFT TICKETS, OR-UPF-000359 P6QLI4. Ensure signage is adequate at all drop points. Add signage to all major intersections to help with locating drop points. Mop-up and secure edges of two unburned pockets H19 and H191 are the nearest helispots for Division A/C 						
8. Division/Group Communication Summary						
Function	Channel	RX Frequency N/W	RX Tone/NAC	TX Frequency N/W	TX Tone/NAC	Mode
TACTICAL	TAC 1	168.0500	167.9	168.0500	167.9	A
TACTICAL	TAC 2	168.2000	167.9	168.2000	167.9	A
COMMAND	CMD 11	170.0625	167.9	162.4375	167.9	A
AIR TO GROUND	A/G PRI	167.1500		167.1500		A
AIR TO GROUND	A/G SEC	170.2625		170.2625		A
AIR GUARD	AIR GUARD	168.6250		168.6250	110.9	A
9. Prepared By (Resource Unit Leader)			Approved By (Planning Section Chief)		Date	Time
JAMES MAHAFFY RESL (T)			KRISANN KOSEL		09/17/2023	2200

Division/Group Assignment List (ICS 204 WF)
Controlled Unclassified Information//Basic

1. Incident Name:				3.		
UMPQUA FIRES				Branch:	Division/Group	
2. Operational Period: DAY						
Date/Time From: 09/18/2023 0700 MON		Date/Time To: 09/18/2023 1900 MON		DINNER D		
4. Operations Personnel						
OPERATIONS CHIEF		DAN MARTIN LARAE GUILLORY (T)		BRANCH DIRECTOR		
SAFETY OFFICERS		ERIC RISDALL SHANE THEALL		DIVISION/GROUP SUPERVISOR LOGAN LAWSON		
5. Resources Assigned this Period						
Strike Team / Task Force / Resource Designator		LWD	Leader	Number Persons	Drop Off PT./Time	Pick Up PT./Time
O-240 SOF2		09/26	AL AUGUSTINE	1	SPARPS CREEK BASE CAMP/0700	SPARPS CREEK BASE CAMP/1900
E-42 ENG4 METHOW RIVER WILD FIRE			CINDY GAMEROS	3	SHARPS CREEK BASE CAMP/0700	SHARPS CREEK BASE CAMP/1900
E-195 ENG6 VALLEY FIRE			ZACK SMITH	3	SHARPS CREEK BASE CAMP/0700	SHARPS CREEK BASE CAMP/1900
O-129 REAF		09/23	JEDIDIAH HANCOCK	1	SHARPS CREEK BASE CAMP/0700	SHARPS CREEK BASE CAMP/1900
O-133 EMPF ADVENTURE MEDICS (MEDIC NELSON)		09/28	RUTH NELSON	1	SHARPS CREEK BASE CAMP/0700	SHARPS CREEK BASE CAMP/1900
6. Control Operations/Work Assignments:						
<p>TASK: Continue to patrol and secure fireline. Continue with fire suppression repair work.</p> <p>PURPOSE: Prevent fire from impacting values at risk, including communities to the west, commercial timberlands, T&E habitat.</p> <p>END STATE: Fire is kept north of 1745 RD and south of 1746 RD to protect the values at risk through the remainder of the fire season.</p>						
7. Special Instructions:						
<ul style="list-style-type: none"> All resources assigned to this division need to add DINNER FIRE OR-UPF-000357 P6QLF5 (0615) to your CTR's and Shift Tickets H-41 is the nearest helispot for Division D 						
8. Division/Group Communication Summary						
Function	Channel	RX Frequency N/W	RX Tone/NAC	TX Frequency N/W	TX Tone/NAC	Mode
TACTICAL	TAC 3	168.6000	167.9	168.6000	167.9	A
COMMAND	CMD 11	170.0625	167.9	162.4375	167.9	A
AIR TO GROUND	A/G PRI	167.1500		167.1500		A
AIR TO GROUND	A/G SEC	170.2625		170.2625		A
AIR GUARD	AIR GUARD	168.6250		168.6250	110.9	A
9. Prepared By (Resource Unit Leader)			Approved By (Planning Section Chief)		Date	Time
JAMES MAHAFFY RESL(T)			KRISANN KOSEL		09/17/2023	2200

Division/Group Assignment List (ICS 204 WF)
Controlled Unclassified Information//Basic

1. Incident Name:			3.			
UMPQUA FIRES			Branch:		Division/Group	
2. Operational Period: DAY			GRIZZLY S/Z			
Date/Time From: 09/18/2023 0700 MON		Date/Time To: 09/18/2023 1900 MON				
4. Operations Personnel						
OPERATIONS CHIEF		DAN MARTIN LARAE GUILLORY (T)		BRANCH DIRECTOR		
SAFETY OFFICERS		ERIC RISDAL SHANE THEALL		DIVISION/GROUP SUPERVISOR		RORY HIETT
5. Resources Assigned this Period						
Strike Team / Task Force / Resource Designator		LWD	Leader	Number Persons	Drop Off PT./Time	Pick Up PT./Time
O-36 SOFC		09/19	RICHARD MCCONNELL	1	SHARPS CREEK BASE CAMP/0700	SHARPS CREEK BASE CAMP/1900
O-240.32 SOF2		09/26	AL AUGUSTINE	1	SHARPS CREEK BASECAMP/0700	SHARPS CREEK BASECAMP/1900
C-8.2 TFLD		09/29	PHILIP BRASS	1	SHARPS CREEK BASE CAMP/0700	SHARPS CREEK BASE CAMP/1900
C-8.12 TFLD (T)		09/29	ADAM CHRISTIE	1	SHARPS CREEK BASE CAMP/0700	SHARPS CREEK BASE CAMP/1900
O-11 WFM WARM SPRINGS		09/29	JOSHUA SOHAPPY	7	SHARPS CREEK BASE CAMP/0700	SHARPS CREEK BASE CAMP/1900
O-209 WFM STORM PEAK		09/18	TIM CUSACK	13	SHARPS CREEK BASE CAMP/0700	SHARPS CREEK BASE CAMP/1900
C-8 CR2I POTOMAC		09/29	JARED ROGERS	20	SHARPS CREEK BASE CAMP/0700	SHARPS CREEK BASE CAMP/1900
E-157 SKG2 MICHAEL SUTCH			MICHAEL SUTCH	1	SHARPS CREEK BASE CAMP/0700	SHARPS CREEK BASE CAMP/1900
E-7 WTS3 PACIFIC RIDGELINE			JUSTIN RIOLO	1	SHARPS CREEK BASE CAMP/0700	SHARPS CREEK BASE CAMP/1900
E-13 VUTV KD OUTDOORS LLC					SHARPS CREEK BASE CAMP/0700	SHARPS CREEK BASE CAMP/1900
E-84 VUTV KWIK RESPONSE					SHARPS CREEK BASE CAMP/0700	SHARPS CREEK BASE CAMP/1900
E-90 VUTV TOG GUN					SHARPS CREEK BASE CAMP/0700	SHARPS CREEK BASE CAMP/1900
O-15 FMOD B&M		09/29	NICK BROWNING	2	SHARPS CREEK BASE CAMP/0700	SHARPS CREEK BASE CAMP/1900
O-129 REAF		09/23	JEDIDIAH HANCOCK	1	SHARPS CREEK BASECAMP/0700	SHARPS CREEK BASECAMP/1900
8. Division/Group Communication Summary						
Function	Channel	RX Frequency N/W	RX Tone/NAC	TX Frequency N/W	TX Tone/NAC	Mode
TACTICAL	TAC 4	166.7250	167.9	166.7250	167.9	A
COMMAND	CMD 11	170.0625	167.9	162.4375	167.9	A
AIR TO GROUND	A/G PRI	167.1500		167.1500		A
AIR TO GROUND	A/G SEC	170.2625		170.2625		A
AIR GUARD	AIR GUARD	168.6250		168.6250	110.9	A
9. Prepared By (Resource Unit Leader)			Approved By (Planning Section Chief)		Date	Time
JAMES MAHAFFY RESL (T)			KRISANN KOSEL		09/17/2023	2200

Division/Group Assignment List (ICS 204 WF)
Controlled Unclassified Information//Basic

1. Incident Name:				3.		
UMPQUA FIRES				Branch:	Division/Group	
2. Operational Period: DAY						
Date/Time From: 09/18/2023 0700 MON		Date/Time To: 09/18/2023 1900 MON		GRIZZLY S/Z		
4. Operations Personnel						
OPERATIONS CHIEF		DAN MARTIN LARAE GUILLORY (T)		BRANCH DIRECTOR		
SAFETY OFFICERS		ERIC RISDAL SHANE THEALL		DIVISION/GROUP SUPERVISOR RORY HIETT		
5. Resources Assigned this Period						
Strike Team / Task Force / Resource Designator		LWD	Leader	Number Persons	Drop Off PT./Time	Pick Up PT./Time
O-15 MRES REMOTE ACCESS (REMS 3)		10/01	NOLAN HOWELL	4	SHARPS CREEK BASE CAMP/0700	SHARPS CREEK BASE CAMP/1900
E-64 AMB2 ROUGH COUNTRY (AMB 5)		10/01	ZACK CLARK	2	SHARPS CREEK BASE CAMP/0700	SHARPS CREEK BASE CAMP/1900
6. Control Operations/Work Assignments:						
<p>TASK: Assess need to take action on the Grizzly fire using pre-identified actions as defined in the management action points.</p> <p>PURPOSE: Prevent fire from impacting values at risk, including private residences, communities to the west, historic mining community and infrastructure and commercial timberlands.</p> <p>END STATE: Fire is kept west of the 2213 RD, north of the 904 RD, east of the 2473 RD, and south of 22 RD, to protect the values at risk through the remainder of fire season. Structures are prepped and secured.</p>						
7. Special Instructions:						
<ul style="list-style-type: none"> All resources assigned to this division need to add Grizzly Fire OR-UPF-000341 P6QL0W (0615) to your CTR's and shift tickets. H-191 is the nearest helispot for Division S/W. 						
8. Division/Group Communication Summary						
Function	Channel	RX Frequency N/W	RX Tone/NAC	TX Frequency N/W	TX Tone/NAC	Mode
TACTICAL	TAC 4	166.7250	167.9	166.7250	167.9	A
COMMAND	CMD 11	170.0625	167.9	162.4375	167.9	A
AIR TO GROUND	A/G PRI	167.1500		167.1500		A
AIR TO GROUND	A/G SEC	170.2625		170.2625		A
AIR GUARD	AIR GUARD	168.6250		168.6250	110.9	A
9. Prepared By (Resource Unit Leader)			Approved By (Planning Section Chief)		Date	Time
JAMES MAHAFFY RESL (T)			KRISANN KOSEL		09/17/2023	2200

Division/Group Assignment List (ICS 204 WF)
Controlled Unclassified Information//Basic

1. Incident Name:				3.		
UMPQUA FIRES				Branch:	Division/Group GRIZZLY NIGHT	
2. Operational Period: DAY						
Date/Time From: 09/18/2023 0700 MON		Date/Time To: 09/18/2023 1900 MON				
4. Operations Personnel						
SAFETY OFFICERS				OPERATIONS CHIEF		DAN MARTIN LARAE GUILLORY (T)
BRANCH DIRECTOR				DIVISION/GROUP SUPERVISOR		
5. Resources Assigned this Period						
Strike Team / Task Force / Resource Designator		LWD	Leader	Number Persons	Drop Off PT./Time	Pick Up PT./Time
O-11 WFM WARM SPRINGS		09/29	JOSHUA SOHAPPY	7	SHARPS CREEK BASE CAMP/1900	SHARPS CREEK BASE CAMP/0700
E-63 AMB2 AMBO 4 - WILDERNESS MEDICS		09/25	ANDREW LYMAN	2	SHARPS CREEK BASE CAMP/1900	SHARPS CREEK BASE CAMP/0700
6. Control Operations/Work Assignments:						
<p>TASK: Assess need to take action on the Grizzly fire using pre-identified actions as defined in the management action points.</p> <p>PURCHASE: Prevent fire from impacting values at risk, including private residences, communities to the west, historic mining community and infrastructure and commercial timberlands.</p> <p>END STATE: Fire is kept east of Channel Creek, to protect the values at risk through the remainder of fire season. Structures are prepped and secured.</p>						
7. Special Instructions:						
<ul style="list-style-type: none"> All resources assigned to this division need to add Grizzly Fire OR-UPF-000341 P6QL0W (0615) to your CTR's and shift tickets. H-191 is the nearest helispot for Division S/Z. 						
8. Division/Group Communication Summary						
Function	Channel	RX Frequency N/W	RX Tone/NAC	TX Frequency N/W	TX Tone/NAC	Mode
TACTICAL	TAC 4	166.7250	167.9	166.7250	167.9	A
COMMAND	CMD 11	170.0625	167.9	162.4375	167.9	A
AIR TO GROUND	A/G PRI	167.1500		167.1500		A
AIR TO GROUND	A/G SEC	170.2625		170.2625		A
AIR GUARD	AIR GUARD	168.6250		168.6250	110.9	A
9. Prepared By (Resource Unit Leader)			Approved By (Planning Section Chief)		Date	Time
JAMES MAHAFFY			KRISANN KOSEL		09/17/2023	2000

Division/Group Assignment List (ICS 204 WF)
Controlled Unclassified Information//Basic

1. Incident Name:			3.			
UMPQUA FIRES			Branch:		Division/Group	
2. Operational Period: 0700 - 1900					CHILCOOT E	
Date/Time From: 09/18/2023 0700 MON	Date/Time To: 09/18/2023 1900 MON					
4. Operations Personnel						
OPERATIONS CHIEF		DAN MARTIN LARAE GUILLORY (T)		SAFETY OFFICERS		ERIC RISDAL SHANE THEALL
BRANCH DIRECTOR				DIVISION/GROUP SUPERVISOR		NICK PETERS
5. Resources Assigned this Period						
Strike Team / Task Force / Resource Designator		LWD	Leader	Number Persons	Drop Off PT./Time	Pick Up PT./Time
O-90 SOFR		09/20	MICHAEL GOYETTE	1	STRADER ICP/0700	STRADER ICP/1900
O-265 SOFR		09/26	MICHAEL JOHNSON	1	STRADER ICP/0700	STRADER ICP/1900
O-314 TFLD		09/28	TOM SCHOENFELDER	1	STRADER ICP/0700	STRADER ICP/1900
O-240.71 TFLD (T)		09/25	MEGAN HURRELL	1	STRADER ICP/0700	STRADER ICP/1900
C-47 CR2I SRV #10		09/23	ANDRES HERNADEZ	25	STRADER ICP/0700	STRADER ICP/1900
C-50 CRW2 GFP		09/25	JESSE SZABO	20	STRADER ICP/0700	STRADER ICP/1900
C-51 CRW2 OROZCO		09/24	CHRIS OROZCO	20	STRADER ICP/0700	STRADER ICP/1900
E-188 ENG4 ORUPF E424		09/22	JEFF CASE	5	STRADER ICP/0700	STRADER ICP/1900
E-183 ENG6 TIMBER TIPPER			KEITH REID	3	STRADER ICP/0700	STRADER ICP/1900
E-185 ENG6 GRAYBACK E25			ARIC PAUL	3	STRADER ICP/0700	STRADER ICP/1900
E-112 WTT1 HYDROTACTICAL			DANIEL WARNER	2	STRADER ICP/0700	STRADER ICP/1900
E-177 DZR2 PARKHURST			KRAIG CERMAK	2	STRADER ICP/0700	STRADER ICP/1900
E-10016 CHP2 IRA TORRES			ADAN CHAVEZ	3	STRADER ICP/0700	STRADER ICP/1900
E-10017 CHP2 IRA TORRES			ISMAEL LOPEZ	3	STRADER ICP/0700	STRADER ICP/1900
8. Division/Group Communication Summary						
Function	Channel	RX Frequency N/W	RX Tone/NAC	TX Frequency N/W	TX Tone/NAC	Mode
TACTICAL	TAC 2	168.2000	167.9	168.2000	167.9	A
TACTICAL	TAC 6	168.2500	167.9	168.2500	167.9	A
COMMAND	CMD 9	173.6000	167.9	169.4625	167.9	A
COMMAND	CMD 10	169.8375	167.9	162.4625	167.9	A
AIR TO GROUND	A/G PRI	167.1500		167.1500		A
AIR TO GROUND	A/G SEC	170.2625		170.2625		A
AIR GUARD	AIR GUARD	168.6250		168.6250	110.9	A
9. Prepared By (Resource Unit Leader)			Approved By (Planning Section Chief)		Date	Time
STEPHANIE FALCON			KRISANN KOSEL		09/17/2023	2200

Division/Group Assignment List (ICS 204 WF)
Controlled Unclassified Information//Basic

1. Incident Name:				3.		
UMPQUA FIRES				Branch:	Division/Group CHILCOOT E	
2. Operational Period: 0700 - 1900						
Date/Time From: 09/18/2023 0700 MON		Date/Time To: 09/18/2023 1900 MON				
4. Operations Personnel						
OPERATIONS CHIEF		DAN MARTIN LARAE GUILLORY (T)		SAFETY OFFICERS		ERIC RISDAL SHANE THEALL
BRANCH DIRECTOR				DIVISION/GROUP SUPERVISOR		NICK PETERS
5. Resources Assigned this Period						
Strike Team / Task Force / Resource Designator		LWD	Leader	Number Persons	Drop Off PT./Time	Pick Up PT./Time
O-225 EQPM (T)		09/20	PHILLIP MAZON	1	STRADER ICP/0700	STRADER ICP/1900
E-137 WTS2 ON THE GO H2O			TIM SCHMIDT	1	STRADER ICP/0700	STRADER ICP/1900
E-138 WTS2 COWBOY FIRE			MALIKI PARKER	1	STRADER ICP/0700	STRADER ICP/1900
E-200 WTS2 M & M			MARK CSERNAK	1	STRADER ICP/0700	STRADER ICP/1900
E-114 EXC2 SCOTT MARSHALL			SCOTT MARSHALL	2	STRADER ICP/0700	STRADER ICP/1900
E-6 GRD1 MARK JONES			JESS CALVERT	2	STRADER ICP/0700	STRADER ICP/1900
E-12 VROL MARK JONES			JUSTIN MURPHY	1	STRADER ICP/0700	STRADER ICP/1900
O-142 REAF		09/24	BRADY DODD	1	STRADER ICP/0700	STRADER ICP/1900
O-143 REAF		09/21	MADELYN HOUSTON	1	STRADER ICP/0700	STRADER ICP/1900
O-233 REAF		09/21	DANE SJODEN	1	STRADER ICP/0700	STRADER ICP/1900
O-238 REAF		09/21	CHRIS MCGRATH	1	STRADER ICP/0700	STRADER ICP/1900
8. Division/Group Communication Summary						
Function	Channel	RX Frequency N/W	RX Tone/NAC	TX Frequency N/W	TX Tone/NAC	Mode
TACTICAL	TAC 2	168.2000	167.9	168.2000	167.9	A
TACTICAL	TAC 6	168.2500	167.9	168.2500	167.9	A
COMMAND	CMD 9	173.6000	167.9	169.4625	167.9	A
COMMAND	CMD 10	169.8375	167.9	162.4625	167.9	A
AIR TO GROUND	A/G PRI	167.1500		167.1500		A
AIR TO GROUND	A/G SEC	170.2625		170.2625		A
AIR GUARD	AIR GUARD	168.6250		168.6250	110.9	A
9. Prepared By (Resource Unit Leader)			Approved By (Planning Section Chief)		Date	Time
STEPHANIE FALCON			KRISANN KOSEL		09/17/2023	2200

Division/Group Assignment List (ICS 204 WF)

Controlled Unclassified Information//Basic

1. Incident Name:			3.				
UMPQUA FIRES			Branch:		Division/Group		
2. Operational Period: 0700 - 1900							
Date/Time From: 09/18/2023 0700 MON		Date/Time To: 09/18/2023 1900 MON		CHILCOOT E			
4. Operations Personnel							
OPERATIONS CHIEF		DAN MARTIN LARAE GUILLORY (T)		SAFETY OFFICERS		ERIC RISDAL SHANE THEALL	
BRANCH DIRECTOR				DIVISION/GROUP SUPERVISOR		NICK PETERS	
5. Resources Assigned this Period							
Strike Team / Task Force / Resource Designator		LWD	Leader		Number Persons	Drop Off PT./Time	Pick Up PT./Time
O-72 REMS BACKCOUNTRY RESCUE (REMS 11)		09/23	JOHN MEYER		5	STRADER ICP/0700	STRADER ICP/1900
E-32 AMBO UNLIMITED PARAMEDICS (AMBO 22)		09/18	SETH CRIBB		2	STRADER ICP/0700	STRADER ICP/1900
O-64 EMPF (MEDIC DOBSON)		09/18	RICH DOBSON		1	STRADER ICP/0700	STRADER ICP/1900
O-58 EMTF (EMT CAUDILL)		09/18	SOREN CAUDILL		1	STRADER ICP/0700	STRADER ICP/1900
O-177 EMTF (EMT KIME)		09/23	ANASTASIA KIME		1	STRADER ICP/0700	STRADER ICP/1900
6. Control Operations/Work Assignments:							
<p>TASK: Patrol and mop-up any threats to containment line within the division. Chip any remaining debris piles along the 3806, 400, and 3809 roads. Grade and roll 3809 road from the 3806 intersection to the 38 road intersection.</p> <p>PURPOSE: Prevent additional fire growth and repair and damage caused by suppression efforts.</p> <p>END STATE: Fire is contained west of 3806 road and 370 road.</p>							
7. Special Instructions:							
<ul style="list-style-type: none"> Utilize Chilcoot repeater. Mitigate snag hazard and implement the risk management process in tactical decisions. Support tactics that minimize impacts to private property. Avoid waterways with retardant applications and reduce impact to Salmon/Steelhead protected populations. Ensure signage is adequate to all drop points. Add signage at all major intersections to help with locating drop points. Resources assigned to this division should put OR-UPF-000345 Chilcoot P6QLF5 (0615) on all CTR's and shift tickets. H-57 is the nearest helispot for Division E. 							
8. Division/Group Communication Summary							
Function	Channel	RX Frequency N/W	RX Tone/NAC	TX Frequency N/W	TX Tone/NAC	Mode	
TACTICAL	TAC 2	168.2000	167.9	168.2000	167.9	A	
TACTICAL	TAC 6	168.2500	167.9	168.2500	167.9	A	
COMMAND	CMD 9	173.6000	167.9	169.4625	167.9	A	
COMMAND	CMD 10	169.8375	167.9	162.4625	167.9	A	
AIR TO GROUND	A/G PRI	167.1500		167.1500		A	
AIR TO GROUND	A/G SEC	170.2625		170.2625		A	
AIR GUARD	AIR GUARD	168.6250		168.6250	110.9	A	
9. Prepared By (Resource Unit Leader)			Approved By (Planning Section Chief)		Date	Time	
STEPHANIE FALCON			KRISANN KOSEL		09/17/2023	2200	

Division/Group Assignment List (ICS 204 WF)
Controlled Unclassified Information//Basic

1. Incident Name:			3.			
UMPQUA FIRES			Branch:		Division/Group	
2. Operational Period: 0700 - 1900			CHILCOOT H			
Date/Time From: 09/18/2023 0700 MON		Date/Time To: 09/18/2023 1900 MON				
4. Operations Personnel						
OPERATIONS CHIEF		DAN MARTIN LARAE GUILLORY (T)		SAFETY OFFICERS		ERIC RISDAL SHANE THEALL
BRANCH DIRECTOR				DIVISION/GROUP SUPERVISOR		JON MILES
5. Resources Assigned this Period						
Strike Team / Task Force / Resource Designator		LWD	Leader	Number Persons	Drop Off PT./Time	Pick Up PT./Time
O-265 SOFR		09/26	MICHAEL JOHNSON	1	STRADER ICP/0700	STRADER ICP/1900
E-190 ENG4 J3			JOSE ARIZMENDI	3	STRADER ICP/0700	STRADER ICP/1900
E-184 ENG6 DIAMOND FIRE			NICHOLAS KING	3	STRADER ICP/0700	STRADER ICP/1900
E-187 ENG6 FRANCO			REBECCA PICKERING	3	STRADER ICP/0700	STRADER ICP/1900
E-199 WTT1 NEVADA FORESTRY NDF-5181		09/29	JERRY SIMPSON	2	STRADER ICP/0700	STRADER ICP/1900
O-57 EMTF (EMT MARTINEZ)		09/18	MELISSA MARTINEZ	1	STRADER ICP/0700	STRADER ICP/1900
O-174 EMPF (MEDIC GIFFORD)		09/24	GREGGORY GIFFORD	1	STRADER ICP/0700	STRADER ICP/1900
6. Control Operations/Work Assignments:						
<p>TASK: Continue mop-up and securing along Hipower Creek. Continue lining and securing the fire edge at the head of Hipower creek. Monitor conditions and develop options as needed to burn out areas of dirty burn/ indirect line on the north edge of the fire near Hipower Creek.</p> <p>PURPOSE: To prevent fore from impacting values, such as nearby communities, private timberland, and critical infrastructure by limiting fire spread.</p> <p>END STATE: Fire is contained along existing fireline in Hipower creek, and south of the ridge line above the head of Hipower Creek.</p>						
7. Special Instructions:						
<ul style="list-style-type: none"> Mitigate aerial hazards, both standing live and snag trees. Survey work areas and implement the risk management process in all tactical decisions. Support tactics that minimize impacts to private timber and property. Avoid waterways with retardant applications and use screens to reduce impact to Salmo/ Steelhead protected populations. All resources assigned to this division need to out OR0UPF-000345 P6QLF5 (0615) on there CTR's and shift tickets. H-1 is the nearest helispot for Division H. 						
8. Division/Group Communication Summary						
Function	Channel	RX Frequency N/W	RX Tone/NAC	TX Frequency N/W	TX Tone/NAC	Mode
TACTICAL	TAC 3	168.6000	167.9	168.6000	167.9	A
COMMAND	CMD 8	173.7125	167.9	162.6000	167.9	A
COMMAND	CMD 9	173.6000	167.9	169.4625	167.9	A
AIR TO GROUND	A/G PRI	167.1500		167.1500		A
AIR TO GROUND	A/G SEC	170.2625		170.2625		A
AIR GUARD	AIR GUARD	168.6250		168.6250	110.9	A
9. Prepared By (Resource Unit Leader)			Approved By (Planning Section Chief)		Date	Time
STEPHANIE FALCON			KRISANN KOSEL		09/17/2023	2200

Division/Group Assignment List (ICS 204 WF)
Controlled Unclassified Information//Basic

1. Incident Name:			3.			
UMPQUA FIRES			Branch:		Division/Group	
2. Operational Period: 0700 - 1900					CHILCOOT J	
Date/Time From: 09/18/2023 0700	MON	Date/Time To: 09/18/2023 1900	MON			
4. Operations Personnel						
OPERATIONS CHIEF		DAN MARTIN LARAE GUILLORY (T)		SAFETY OFFICERS		ERIC RISDAL SHANE THEALL
BRANCH DIRECTOR				DIVISION/GROUP SUPERVISOR		DAN COTHREN
5. Resources Assigned this Period						
Strike Team / Task Force / Resource Designator		LWD	Leader	Number Persons	Drop Off PT./Time	Pick Up PT./Time
O-265 SOFR		09/26	MICHAEL JOHNSON	1	STRADER ICP/0700	STRADER ICP/1900
O-13 TFLD		09/28	JEREMY BRYANT	1	STRADER ICP/0700	STRADER ICP/1900
O-291 HEQB		09/29	BRIAN GENTIS	1	STRADER ICP/0700	STRADER ICP/1900
O-292 HEQB (T)		09/29	GARRETT GIBBS	1	STRADER ICP/0700	STRADER ICP/1900
C-49 CRW1 HELENA IHC		09/26	TIGHE STOYANOFF	25	STRADER ICP/0700	STRADER ICP/1900
C-52 CRW2 PACIFIC OASIS C-2		09/28	ALEX HESS	20	STRADER ICP/0700	STRADER ICP/1900
C-53 CR2I WENATCHEE RIVER		09/26	BRIAN FLATTEN	18	STRADER ICP/0700	STRADER ICP/1900
C-54 CRW2 PACIFIC OASIS		09/30	DONTE MARQUEZ	20	STRADER ICP/0700	STRADER ICP/1900
E-189 ENG4 DIAMOND FIRE			DEAN WILSON	3	STRADER ICP/0700	STRADER ICP/1900
E-13 WTS2 SCOTT MARSHALL			BENNEY YOKUM	1	STRADER ICP/0700	STRADER ICP/1900
E-173 WTS2 SCOTT MARSHALL			RICHARD JOHNSON	1	STRADER ICP/0700	STRADER ICP/1900
E-205 WTS2 WESTERN FIRES			RICHARD DAUGHERTY	1	STRADER ICP/0700	STRADER ICP/1900
E-206 WTS2 S5			JOHN YATES	1	STRADER ICP/0700	STRADER ICP/1900
E-24 DZR2 TOUGH EQUIPMENT			ROBERT ASHERIN	2	STRADER ICP/0700	STRADER ICP/1900
E-158 SKG2 HARD HUNT			MARSHALL MEACHAM	2	STRADER ICP/0700	STRADER ICP/1900
E-136 UTV					STRADER ICP/0700	STRADER ICP/1900
E-137 UTV					STRADER ICP/0700	STRADER ICP/1900
8. Division/Group Communication Summary						
Function	Channel	RX Frequency N/W	RX Tone/NAC	TX Frequency N/W	TX Tone/NAC	Mode
TACTICAL	TAC 1	168.0500	167.9	168.0500	167.9	A
COMMAND	CMD 9	173.6000	167.9	169.4625	167.9	A
COMMAND	CMD 10	169.8375	167.9	162.4625	167.9	A
AIR TO GROUND	A/G PRI	167.1500		167.1500		A
AIR TO GROUND	A/G SEC	170.2625		170.2625		A
AIR GUARD	AIR GUARD	168.6250		168.6250	110.9	A
9. Prepared By (Resource Unit Leader)			Approved By (Planning Section Chief)		Date	Time
STEPHANIE FALCON			KRISANN KOSEL		09/17/2023	2200

Division/Group Assignment List (ICS 204 WF)
Controlled Unclassified Information//Basic

1. Incident Name:				3.		
UMPQUA FIRES				Branch:	Division/Group CHILCOOT J	
2. Operational Period: 0700 - 1900						
Date/Time From: 09/18/2023 0700 MON		Date/Time To: 09/18/2023 1900 MON				
4. Operations Personnel						
OPERATIONS CHIEF		DAN MARTIN LARAE GUILLORY (T)		SAFETY OFFICERS		ERIC RISDAL SHANE THEALL
BRANCH DIRECTOR				DIVISION/GROUP SUPERVISOR		DAN COTHREN
5. Resources Assigned this Period						
Strike Team / Task Force / Resource Designator		LWD	Leader	Number Persons	Drop Off PT./Time	Pick Up PT./Time
O-142 REAF		09/24	BRADY DODD	1	STRADER ICP/0700	STRADER ICP/1900
O-233 REAF		09/21	DANE SJODEN	1	STRADER ICP/0700	STRADER ICP/1900
O-234 REAF		09/24	NATALIE MILLS	1	STRADER ICP/0700	STRADER ICP/1900
O-238 REAF		09/21	CHRIS MCGRATH	1	STRADER ICP/0700	STRADER ICP/1900
O-237 REAF (T)		09/25	ELIZABETH DAY	1	STRADER ICP/0700	STRADER ICP/1900
O-73 REMS ROUGH COUNTRY (REMS 22)		09/19	ANDREW PADDISON	4	STRADER ICP/0700	STRADER ICP/1900
E-142 AMB2 CARDINAL MEDICAL SOULTIONS (MED MOD 1)		09/23	CHARLES CARLSON	2	STRADER ICP/0700	STRADER ICP/1900
E-175 AMBU BEST PRACTICES (AMBU 44)		09/22	DEVIN BEST	2	STRADER ICP/0700	STRADER ICP/1900
O-62 EMPF (MEDIC KAISER)		09/18	JEFFERY KAISER	1	STRADER ICP/0700	STRADER ICP/1900
O-63 EMPF (MEDIC GISBSON)		09/19	TOM GIBSON	1	STRADER ICP/0700	STRADER ICP/1900
8. Division/Group Communication Summary						
Function	Channel	RX Frequency N/W	RX Tone/NAC	TX Frequency N/W	TX Tone/NAC	Mode
TACTICAL	TAC 1	168.0500	167.9	168.0500	167.9	A
COMMAND	CMD 9	173.6000	167.9	169.4625	167.9	A
COMMAND	CMD 10	169.8375	167.9	162.4625	167.9	A
AIR TO GROUND	A/G PRI	167.1500		167.1500		A
AIR TO GROUND	A/G SEC	170.2625		170.2625		A
AIR GUARD	AIR GUARD	168.6250		168.6250	110.9	A
9. Prepared By (Resource Unit Leader)			Approved By (Planning Section Chief)		Date	Time
STEPHANIE FALCON			KRISANN KOSEL		09/17/2023	2200

Division/Group Assignment List (ICS 204 WF)
Controlled Unclassified Information//Basic

1. Incident Name:			3.			
UMPQUA FIRES			Branch:		Division/Group	
2. Operational Period: 0700 - 1900			RIDGE W			
Date/Time From: 09/18/2023 0700	MON	Date/Time To: 09/18/2023 1900				
4. Operations Personnel						
OPERATIONS CHIEF		DAN MARTIN LARAE GUILLORY (T)		SAFETY OFFICERS		ERIC RISDAL SHANE THEALL
BRANCH DIRECTOR				DIVISION/GROUP SUPERVISOR		SHILOW NORTON
5. Resources Assigned this Period						
Strike Team / Task Force / Resource Designator		LWD	Leader	Number Persons	Drop Off PT./Time	Pick Up PT./Time
O-265 SOFR		09/26	MICHAEL JOHNSON	1	STRADER ICP/0700	STRADER ICP/1900
E-4 ENG4 TORRES			JAUN TORRES	3	STRADER ICP/0700	STRADER ICP/1900
E-186 ENG6 FENIX			SUZANNE FLYNN	3	STRADER ICP/0700	STRADER ICP/1900
6. Control Operations/Work Assignments:						
<p>TASK: Complete line on north part of Ridge Fire. Look for opportunities to secure fire edge in the northeast corner of fire below 5851 RD. Begin repair on 5851 RD. Continue mop-up and securing line on the remainder of the fire.</p> <p>PURPOSE: Prevent impact to nearby values by limiting fire spread towards Fuller Lake, the Willamette NF and Boulder Creek Wilderness.</p> <p>END STATE: Fire is contained east of Fuller Lake, North of the 3810 RD and west of the 5851 Rd.</p>						
7. Special Instructions:						
<ul style="list-style-type: none"> Mitigate aerial hazards, both standing live and snag trees. Survey work areas and implement the risk management process in all tactical decisions. Support tactics that minimize impacts to private timber property. Avoid waterways with retardant applications and use screens to reduce the impact to Salmon/ Steelhead protected populations. Ensure signage is adequate at all drop points. Add signage at all major intersections to help with locating drop points. All resources assigned to this division will put OR-UPF-000346 P6QLFA (0615) on the bottom of CTR's and shift tickets. H-291 is the nearest helispot for Division W. 						
8. Division/Group Communication Summary						
Function	Channel	RX Frequency N/W	RX Tone/NAC	TX Frequency N/W	TX Tone/NAC	Mode
TACTICAL	TAC 5	166.7750	167.9	166.7750	167.9	A
COMMAND	CMD 8	173.7125	167.9	162.6000	167.9	A
AIR TO GROUND	A/G PRI	167.1500		167.1500		A
AIR TO GROUND	A/G SEC	170.2625		170.2625		A
AIR GUARD	AIR GUARD	168.6250		168.6250	110.9	A
9. Prepared By (Resource Unit Leader)			Approved By (Planning Section Chief)		Date	Time
STEPHANIE FALCON			KRISANN KOSEL		09/17/2023	2200

MEDICAL PLAN (ICS 206 WF)

Controlled unclassified Information Basic

1. Incident/Project Name			2. Operational Period											
Umpqua Fires (Dinner, Brice Creek & Grizzly Fires)			Date/Time		9/18/2023 - 9/19/2023, 0600 - 0600									
3. Ambulance Services														
Name	Complete Address	Phone & EMS Frequency			Advanced Life Support									
					Yes	No								
South Lane Fire & Rescue	233 E. Harrison Ave, Cottage Grove, OR	Command Channel/911(Backup)			X									
4. Air Ambulance Services														
Name		Phone		Type of Aircraft and Capability										
Commercial Air Ambulance		911 / 541-344-2211		Closest available based on availability										
Teton, N38HX		Command		Short Haul, Day time use only										
5. Hospitals														
Name Address	GPS Datum – WGS 84		Travel Time		Phone	Helipad		Level of Care						
			Air	Gnd		Yes	No							
Sacred Heart MC Riverbend 3333 Riverbend Dr. Springfield, OR 97477	Lat: N 44° 04.876'	Long: W 123° 01.588'	30 min	1 hr	(541) 222-6929	X		Level II Trauma						
PeaceHealth Cottage Grove Community MC 1515 Village Dr Cottage Grove, OR	Lat: N 43° 48.2292'	Long: W 123° 2.3801'							15 min	30 Min	(541) 942-6646	X		Non Trauma
McKenzie-Willamette MC 1460 G St Springfield, OR 97477	Lat: N 44° 03.217'	Long: W 123° 00.219'												
Legacy Emanuel 2801 N Gantenbein Ave Portland OR 97227	Lat: N 45°32.66'	Long: W 122° 40.18'	1 hr	2 hr 30 min	(503) 413-2285	X		Level I / Burn Center						
6. Branch/Div/Group		Area Location Capability												
Grizzly Fire DIV S/Z		E-64, Ambu 5 - Zack Clark O-15, REMS 3 - Nolan Howell												
Brice Creek Fire DIV A/C		E-193, Ambu 55- Lance Puig O-29, REMS 1- Joe Decker												
Dinner Fire DIV D		O-133, Medic Ruth Nelson												
Grizzly Fire Night Shift		E-63, Ambu 2 - Andrew Lyman												
Sharps Creek Base Camp		O-210 MEDL John Nokes (509)680-1339, O-106 MEDL(t) Christy Field E-105 Ambu 6 - Marina Barto												
8. Prepared By (Medical Unit Leader)			9. Date/Time	10. Reviewed By (Safety Officer)		11. Date/Time								
Paul Smith, MEDLT			9/17/2023	Eric Risdal ERIC RISDAL		9/17/2023								

MEDICAL PLAN (ICS 206 WF)

Controlled unclassified Information Basic

1. Incident/Project Name		2. Operational Period						
UMPQUA FIRES (Chilcoot Fire & Ridge Fire)		Date/Time	9/18/2023 0600-2200					
3. Ambulance Services								
Name	Complete Address	Radio Frequency & Phone	Advanced Life Support					
			Yes	No				
Umpqua Valley Ambulance	1290 NE Cedar St. Roseburg OR	Command Channel/911 (backup)	X					
4. Air Ambulance Services								
Name	Phone	Type of Aircraft and Capability						
Commercial Air Ambulance	Command /911(backup)	Closest available ship based on availability						
Teton N38HX	Command Channel	Short Haul Capable (Walterville OR)						
Yellowstone N234BH	Command Channel	Short Haul Capable (Grants Pass OR)						
5. Hospitals								
Name Address	GPS Datum – WGS 84		Travel Time		Phone	Helipad		Level of Care
			Air	Gnd		Yes	No	
Mercy Medical Center 2700 NW Stewart Pkwy Roseburg, OR	Lat: N 43° 14.567'	Long: W 123° 21.983'	30 min	1 hr	(541) 673-0611	X		Level III Trauma
	VHF:							
Legacy Emanuel 2801 N Gantenbein Ave Portland OR 97227	Lat: N 45°32.66'	Long: W 122° 40.18'	2 hr	4 hr	(503) 413-2285	X		Level I/ Burn Center
	VHF:							
6. Branch/Div/Group	Area Location Capability							
DIV E (Chilcoot)	O-72 REMS 11 - John Meyer, E-32 Ambu 22 - Seth Cribb O-58 EMTF Soren Caudill, O-64 Medic Rich Dobson, O-177 EMTF Anastasia Kime							
DIV H (Chilcoot)	O-174 Medic Gregory Gifford O-57 EMTF Melissa Martinez							
DIV J (Chilcoot)	Med. Mod 1 - Charles Carlson, AMBU 44 - Devin Best, O-73, REMS 22 - Andrew Paddison O-62 Medic Jeff Kaiser, O-63 Medic Tom Gibson							
Chilcoot ICP	MESU Cardinal Medical - Julie Sargent (In-Camp Treatment) MEDL Laura Belino, MEDL(t) Paul Smith							
8. Prepared By (Medical Unit Leader)	9. Date/Time	10. Reviewed By (Safety Officer)		11. Date/Time				
Paul Smith , MEDLT	9/17/2023	Eric Risdal ERIC RISDAL		9/17/2023				

Digitally signed by ERIC RISDAL
Date: 2023.09.17 19:36:51
-0700

IWI Procedures

Fire Line

1. Request closest EMT/Medic to the injured person and report to DIV Supervisor.
2. Contact **Chilcoot Communications** and declare a “Red medical” (critical), “Yellow medical” (serious), or “Green medical” (minor). Request emergency radio traffic if needed.
3. Give location of patient and best access for initial responders.
4. Describe injury(s): Are they bleeding? How much? Are they conscious? Can they talk? Do they know what’s going on? How many people are hurt.
5. Gather information for MIR and relay to dispatch as soon as practical (see MIR back page)

Sharps Basecamp

1. Life threatening emergency, call 911
2. Call Chilcoot Communications on Command 7 or 8 or (310) 780-4296
3. Contact (go to) the medical tent.
4. Call the medical tent 310-780-4296

Strader ICP

1. Life threatening emergency, call 911
2. Call Chilcoot Communications on Command or 949-648-1591
3. Non-life-threatening go to blue medical trailer located between lunch trailer and laundry trailer



Please take care of those around you and cover your cough so this won't happen to you!!

ACTIVITY LOG (ICS 214)

1. Incident Name: _____		2. Operational Period: Date From: _____ Date To: _____ Time From: _____ Time To: _____	
3. Name: _____	4. ICS Position: _____	5. Home Agency (and Unit): _____	
6. Resources Assigned:			
Name	ICS Position		Home Agency (and Unit)
7. Activity Log:			
Date/Time	Notable Activities		
8. Prepared by: Name: _____ Position/Title: _____ Signature: _____			
ICS 214, Page 1		Date/Time: _____	

MEDICAL PLAN (ICS 206 WF)

Controlled Unclassified Information//Basic

Medical Incident Report

FOR A NON-EMERGENCY INCIDENT, WORK THROUGH CHAIN OF COMMAND TO REPORT AND TRANSPORT INJURED PERSONNEL AS NECESSARY.

FOR A MEDICAL EMERGENCY: IDENTIFY ON SCENE INCIDENT COMMANDER BY NAME AND POSITION AND ANNOUNCE "MEDICAL EMERGENCY" TO INITIATE RESPONSE FROM IMT COMMUNICATIONS/DISPATCH.

Use the following items to communicate situation to communications/dispatch.

1. CONTACT COMMUNICATIONS / DISPATCH (**Verify correct frequency prior to starting report**)

Ex: "Communications, Div. Alpha. Stand-by for Emergency Traffic."

2. INCIDENT STATUS: *Provide incident summary (including number of patients) and command structure.*

Ex: "Communications, I have a Red priority patient, unconscious, struck by a falling tree. Requesting air ambulance to Forest Road 1 at (Lat./Long.) This will be the Trout Meadow Medical, IC is TFLD Jones. EMT Smith is providing medical care."

Severity of Emergency / Transport Priority	<input type="checkbox"/> RED / PRIORITY 1 Life or limb threatening injury or illness. Evacuation need is IMMEDIATE <i>Ex: Unconscious, difficulty breathing, bleeding severely, 2° – 3° burns more than 4 palm sizes, heat stroke, disoriented.</i> <input type="checkbox"/> YELLOW / PRIORITY 2 Serious Injury or illness. Evacuation may be DELAYED if necessary. <i>Ex: Significant trauma, unable to walk, 2° – 3° burns not more than 1-3 palm sizes.</i> <input type="checkbox"/> GREEN / PRIORITY 3 Minor Injury or illness. Non-Emergency transport <i>Ex: Sprains, strains, minor heat-related illness.</i>	
Nature of Injury or Illness & Mechanism of Injury		<i>Brief Summary of Injury or Illness (Ex: Unconscious, Struck by Falling Tree)</i>
Transport Request		<i>Air Ambulance / Short Haul/Hoist Ground Ambulance / Other</i>
Patient Location		<i>Descriptive Location & Lat. / Long. (WGS84)</i>
Incident Name		<i>Geographic Name + "Medical" (Ex: Trout Meadow Medical)</i>
On-Scene Incident Commander		<i>Name of on-scene IC of Incident within an Incident (Ex: TFLD Jones)</i>
Patient Care		<i>Name of Care Provider (Ex: EMT Smith)</i>

3. INITIAL PATIENT ASSESSMENT: *Complete this section for each patient as applicable (start with the most severe patient)*

Patient Assessment: See IRPG page 106

Treatment:

4. TRANSPORT PLAN:

Evacuation Location (if different): *(Descriptive Location (drop point, intersection, etc.) or Lat. / Long.)* Patient's ETA to Evacuation Location:

Helispot / Extraction Site Size and Hazards:

5. ADDITIONAL RESOURCES / EQUIPMENT NEEDS:

Example: Paramedic/EMT, Crews, Immobilization Devices, AED, Oxygen, Trauma Bag, IV/Fluid(s), Splints, Rope rescue, Wheeled litter, HAZMAT, Extrication

6. COMMUNICATIONS: Identify State Air/Ground EMS Frequencies and Hospital Contacts as applicable

Function	Channel Name/Number	Receive (RX)	Tone/NAC *	Transmit (TX)	Tone/NAC *
COMMAND					
AIR-TO-GRND					
TACTICAL					

7. CONTINGENCY: **Considerations:** *If primary options fail, what actions can be implemented in conjunction with primary evacuation method? Be thinking ahead.*

8. ADDITIONAL INFORMATION: *Updates/Changes, etc.*

REMEMBER: Confirm ETA's of resources ordered. Act according to your level of training. Be Alert. Keep Calm. Think Clearly. Act Decisively.