

DINNER GRIZZLY BRICE CREEK CHILCOOT RIDGE



TUESDAY
SEPTEMBER 19, 2023

Operational Period
0700-1900



INCIDENT ACTION PLAN

NOTES:

CREW SWAPS



MAPS

IAP

CHECK-IN

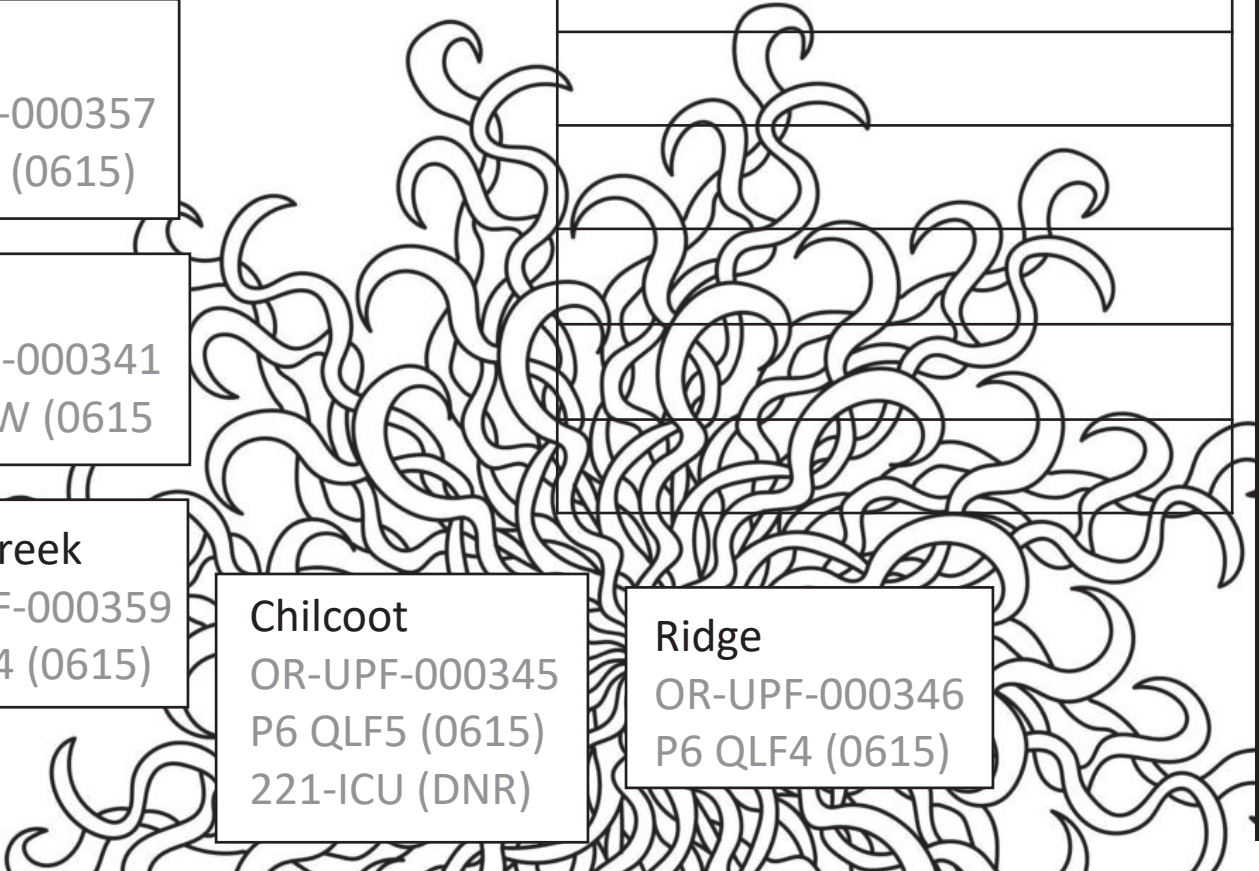
Dinner
OR-UPF-000357
P6 QLJ7 (0615)


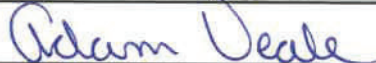
Grizzly
OR-UPF-000341
P6 QLOW (0615)

Brice Creek
OR-UPF-000359
P6 QLJ4 (0615)

Chilcoot
OR-UPF-000345
P6 QLF5 (0615)
221-ICU (DNR)

Ridge
OR-UPF-000346
P6 QLF4 (0615)



Incident Objectives (ICS 202)					
1. Incident Name		2. Date Prepared		3. Time Prepared	
Umpqua Fires		9/18/2023		2000	
4. Operational Period (Date and Time)					
From:	9/19/2023	at	700	To:	9/19/2023 at 1900
5. Strategic Framework and Leaders Intent					
Strategic Framework:					
Implement suppression strategies that minimize impacts to identified values at risk, and that ensures firefighter and public safety are the top priority					
Specifically manage risk to firefighters by ensuring hazards are identified, assessed, and where possible mitigated. Be prepared to accept residual risk when exposure is commensurate with values threatened and the probability of achieving objectives is high.					
Leaders Intent:					
Engage in all work assignments with a high degree of professionalism and provide excellent customer service to all parties involved with the incident. All assigned personnel should:					
* Exhibit professional behavior					
* Ensure effective communication					
* Manage personal safety and the safety of others					
* Conduct effective fatigue management and implement work/rest cycles					
6. Management Objectives and Requirements					
Implement operational plans that establish holding features across the entire perimeter of each fire resulting in minimized duration and physical extent of each, and maximizing the protection of:					
* Highway 138 corridor					
* Private timber lands					
* Bohemia Mining District, Fairview Comm Site, Chilcoot Repeater, and other infrastructure					
* Active USFS timber sales					
* Natural and cultural resources					
Coordinate all fire suppression and repair work with Resource Advisors to protect natural and cultural values.					
Maintain effective relationships by ensuring timely information between the IMT, affected agencies, and the public.					
7. Operational Period Command Emphasis					
One of the principals of Highly Reliable Organizations (HRO) is Sensitivity to Operations. This involves maintaining situational awareness at all staff levels, helping to identify potential hazards, correcting errors when they are small, and continually learning from each other and our environment. If you see a safety concern, have a near-miss, notice a harmful pattern, or realize you or someone else is normalizing risk, speak up.					
8. Attachments (check if attached)					
X	Organization List (ICS 203)	X	Medical Plan (ICS 206)	X	Fire Behavior
X	Assignment List (ICS 204)	X	Safety Message		
X	Communications Plan (ICS 205)	X	General Forecast		
9. Prepared by (Planning Section Chief)			10. Approved by (Incident Commander)		
					

ORGANIZATION ASSIGNMENT LIST (ICS 203)

NORTHWEST TEAM 6				7. Operations Section			
1. Incident Name		GRIZZLY / DINNER / BRICE CREEK / CHILCOOT / RIDGE FIRES		Operations		DAN MARTIN / LARAE GUILLORY (T)	
				Field Operations		JESS BOHNSACK / JOE PARR (T)	
2. Date		Time		Planning Operations		TRISH WALLACE / STEVE YOUNG (T)	
9/18/2023		2000		Planning Operations		TIM NUTLEY / JAMES GRAHAM (T)	
2a. Operational Period				Strategic Operations			
From: 9/19/2023 0700 To: 9/19/2023 1900							
3. Incident Commander(s) and Staff							
Incident Commander		TYSON ALBRECHT					
Deputy		ADAM VEALE / KEN PAUL / STEVE HAWKINS		DIVISION		BRICE CREEK A/C/D DOUG CATES	
Safety Officer		ERIC RISDAL / SHANE THEALL		DIVISION		GRIZZLY S/Z RORY HIETT	
Safety Officer		AL AUGUSTINE		DIVISION		GRIZZLY NIGHT	
Medical Unit		JOHN NOKES / CHRISTY FIELD (T)		DIVISION		CHILCOOT E/W NICK PETERS	
Medical Unit		LAURA BELINO / PAUL SMITH (T)		DIVISION		CHILCOOT H JON MILES	
Information Officer		JODIE BARRAM / JESSICA REED (T)		DIVISION		CHILCOOT J DAN COTHREN	
Information Officer		NANCY JONES / JOE ANDERSON		DIVISION			
Liaison Officer		KIM TITUS / GARRIT CRAIG		DIVISION			
Human Resources		AUDREY MATSUMONJI / K.C. BRIGGS (T)					
				Branch Director			
				DIVISION			
				DIVISION			
4. Agency/Organization Representative							
UMPQUA NATIONAL FOREST		DAVID ANDERSEN / JIMMY TYREE		DIVISION			
UMPQUA NATIONAL FOREST		MARK SOMMER (T)		BRANCH			
WILLAMETTE NF		MOLLY JUILLERAT		Branch Director			
BLM - EUGENE		DENNIS TEITZEL		DIVISION			
BLM - ROSEBURG		HEATHER WHITMAN		DIVISION			
ODF		CHRIS CLINE / JOHN FLANNIGAN		DIVISION			
DFPA		PAUL RITTER		Branch Director			
LEAD READ		JED HANCOCK / BRADY DODD		GROUP			
USFS - SW IARR		MANUEL MARTINEZ		GROUP			
				GROUP			
5. Planning Section							
Chief		KRISANN KOSEL		GROUP			
Deputy		SUE PUDDY / JOHN NONEMAN / SHANNA MCCARTY		GROUP			
Resource Unit		STEPHANIE FALCON / JAMES MAHAFFY (T)					
Situation Unit		KENT ELLETT / DAMIEN HAWLEY-JONES (T)		GROUP			
Status Check-in		AMY BURT (T) / DIANA HECKATHORN (T)		DIVISION			
GISS		EMILY RUSH / ROBIN BIGGS (T)		GROUP			
Fire Behavior		SARAH BUSH					
Meteorologist		STEVE BODNAR / SPENCER TANGEN (T)					
DMOB		MIKE HESTON (V)					
DOCL		DEIDRE SMITH (V)					
FOBS							
				7b. Air Operations Branch			
				Air Operations Director		DOUG LEDGERWOOD	
				Air Support Supervisor		KEVIN KOZAK	
				Air Attack Supervisor			
6. Logistics Section		JOE NEER / CINDY WEDEKIND		Helicopter Coordinator			
Facilities Unit		ANNA TANKERSLEY / MIKE VAUGHN (T)					
Supply Unit		JON BYERLY					
				8. Finance/Administration Section			
Ground Support Unit		TODD GRIFFIN / BRANDON SIEDERS		Chief		JEN KNUTSON / KEL'S MARTINEZ	
Ground Support Unit		KEVIN PALM / MIGUEL MACIAS (T)		Chief		JANET MACDONALD (T) / PAM ARBOGAST (T)	
Communications Unit		BERRY MATHIAS / DAVID MARSCH		Time Unit		KRISSE MITCHELL / KEVIN GU (T)	
ITSS		MATT MATSON / JAMES BROWN		Equipment Time		PEGGY ROBERTS / SABRINA BLASINGAME	
Food Unit		MIKE SPATZ / JOE DEPAOLA (T)		Equipment Time		JUSTIN KRIEG (T)	
Food Unit		REE ELLA VONBORSTEL		Personnel Time		KATHY HOTTLE / NANCY SHADOMY	
Security Unit		RONNIE OROPEZA		Personnel Time		DARCI DRINKWATER (T) / JOSEPH TOTTEN (T)	
Ordering Manager		DONNA DIXON / NOE REYES / MICHAEL SMITH (T)		Comp/Claims Unit		DIANNA PRIOR	
Receiving & Distribution		KARLIS LAZDA / ED JENSEN		Cost Unit		ANTHONY JOHNS	
Base Camp Manager		MATT AXE (T) / BEN WALKER (T)		ICPI		LEO ROBB	
9. Prepared by:				Signature:			
JAMES MAHAFFY		Date: 9/18/2023		Sue Puddy, PSC2			



Fire Weather Forecast



FORECAST NO: 20
FORECAST FOR: Tuesday Day & Night Shift
SHIFT DATE: 09/19/2023
DATE AND TIME ISSUED: 09/18/2023 at 2000

NAME OF FIRE: Umpqua Fires
UNIT: OR-UPF
SIGNED: Steve Bodnar - Incident Meteorologist
 405-203-9850 (cell) / stephen.bodnar@noaa.gov

WEATHER DISCUSSION: Another weak cold front will pass over the fires today but this front will contain little to no moisture and cloud cover. Main impacts will be a degree or two of cooling and drying of the atmosphere. Humidity levels will start off extremely dry along the highest peaks with fair to good recoveries in the valleys. As inversions lift 1200-1300, much drier air will get mixed down the surface with sharp decline in observed humidity values.

TUESDAY:

WEATHER: Few clouds in the morning, otherwise sunny. Patchy fog or smoke in the valleys.

	Max Temperatures	Minimum Relative Humidity
Valleys (2500-3500 ft)	74-77° (Down 2)	20-28% (Down 7-10%)
Ridges (3500-4500 ft)	65-71° (Down 3)	10% AM > 30-40% (Down 5%)

20-FOOT WINDS:

Chilcoot: Drainage 0 to 4 mph through 1100, becoming west/northwest 4 to 8 mph; ridge gusts 15 mph 1400-1700.
 Grizzly: Northwest 3 to 6 mph lower drainage, 8 to 11 mph gusts 18 mph upper drainage after 1400.
 Brice Creek: Ridgelines north/northwest 4 to 7 mph. Shelter drainages variable to upslope 2 to 6 mph.
 Dinner/Ridge: Northwest to north 6 to 10 mph gust 14 to 18 mph.

AVIATION: Smoke/fog under inversions could result in local visibility 2-5SM before 1200.

CWR (≥ 0.25"): 0% **LAL:** 1 **HAINES:** 4 **INVERSION BREAK/MH:** 1300 hrs/ 3500 ft
CAMP FORECAST: **Strader ICP:** 78F **Sharps Creek Base Camp:** 78F

TUESDAY NIGHT:

WEATHER: Mostly clear in the evening. Increasing marine clouds near sunrise.

	Min Temperatures	Maximum Relative Humidity
Valleys (2500-3500 ft)	43-46° down 1-2	75-85% - Up 5%
Ridges (3500-4500 ft)	40-44° down 3	70-80% - (Up 40-50% or more)

20-FOOT WINDS:

Grizzly: Northwest to north 4 to 9 mph in the evening becoming drainage or northeast 1 to 5 mph overnight.
 Chilcoot: North/northeast 4 to 8 in the evening decreasing 1 to 4 mph overnight.

CWR (≥ 0.25"): 0% **LAL:** 1 **INVERSIONS:** Weak inversions overnight setting after 2100
CAMP FORECAST: **Strader ICP:** 45F **Sharps Creek Base Camp:** 45F – Patchy fog

EXTENDED OUTLOOK: A low pressure system carves into Oregon starting Wednesday, rotates over the area Thursday, then drifts east with weak ridging on Friday. Breezy to gusty winds will accompany the system with direction wavering from N/NW Wednesday to N/NE Thursday. The arrival of the low will bring a decent shot of moisture with a 30% chance for light showers. Warmer and drier conditions return Friday into the weekend with a 20% chance for light showers over the weekend.

Please send weather observations to the IMET – text a picture of the observations to the # above.

FIRE BEHAVIOR FORECAST

FORECAST NUMBER: 20	TYPE OF FIRE: Wildfire
FIRE NAME: Umpqua Fires	OPERATIONAL PERIOD: Day & Night shifts, September 19, 2023
DATE ISSUED: Monday September 18, 2023	TIME ISSUED: 19:30 Hours
UNIT: Umpqua National Forest	SIGNED: Sarah Bush – FBAN

INPUTS

WEATHER SUMMARY: See Fire Weather Forecast for Details

FUELS:

Fuels in the fire areas are primarily composed of *Timber Litter*, and *Timber Understory with moss/lichen present in most stands*. Mature conifer stands with western hemlock and Douglas fir present, generally have heavy surface fuel loading. 30 to 50+ year old second growth conifer stands contain needle litter and some down woody debris. Brush and reproduction present in areas with less dense canopies.

Grizzly, Brice, Dinner - Forecast -ERC 94th percentile. Yesterday's obs. 1hr-10%, 10hr-11%, 100hr-10%, **1000hr-14%**
 Chilcoot & Ridge- Forecast -ERC 95th percentile. Yesterday's obs. 1hr-10%, 10hr-12%, 100hr-11%, **1000hr-14%**

OUTPUTS

FIRE BEHAVIOR GENERAL:

One more night with fair overnight humidity recoveries combined with the low daytime humidities have extended the burn period for areas with active fire. Conditions will remain dry and slightly cooler. The 1000-hr fuel moisture will be lower, making them available and receptive to consume and preheat canopies. Expect lichen to be available to burn with potential for torching when the RH gets below 30%.

One and 10-hour fuel moistures are slightly higher today yet still available to burn, especially in exposed stands. The 100-hr fuels continue to lag and are more available to burn. Creeping and backing will be the most common surface fire behavior in areas with active burning.



Fire Danger—Umpqua National Forest

Local Thresholds – Watch Out: Combinations of any of these factors can greatly increase fire behavior:
 20' Wind Speed over 13 mph, RH less than 25%,
 Temperature over 85, 1000-Hour Fuel Moisture less than 12%

FIRE BEHAVIOR SPECIFIC:

Brice, Grizzly, and Chilcoot

Div J can expect up to 4' flame lengths and less than 6 ch/hr ROS where there is active fire. Fire spread potential will be largely dependent on location, aspect, and exposure/sheltering. Ten and 100-hr fuels in exposed stands will be available to carry fire throughout the day although at moderate rates of spread due to low wind speeds on the fire. Creeping and backing is expected in on **Div E** as well. Expect moderated fire activity with a low potential for isolated torching on **Div A** with creeping fire behavior as unburned pockets consume fuels. The potential for isolated torching on **Div J** will be slightly elevated today due to the drier overnight and daytime conditions.

Expect minimal fire behavior and smoke on the **Ridge** and **Dinner** fires as active burning and smoke would be limited to isolated interior areas of the fire today. Expect another day with backing fire and a moderate level of smoke production on **Div S/Z** as the heavy dead and down consumes. Fire will back towards the Champion Ck Rd and fill in unburned islands of fuels. If fire crosses Grizzly creek to the east, wind/slope alignment would push fire ESE towards the Noon Day Road, 2212 at 6ch/hr. The area would exhibit up to 6'FL without suppression actions.

Spotting distance up to 0.2 mi, Probability of Ignition- 50% shaded and overnight: 75% unshaded.

Initial Attack: In the event resources respond to a new start, recognize that fuels, topography, and conditions may be different than areas you have previously worked in.

AIR OPERATIONS: Inversion will limit visibility and ability to fly until around noon.

SAFETY

Pay attention for roll-outs on steep slopes. Potential for fire weakened trees and snags hazards exists where fire has been burning on the landscape for the last couple weeks.

AIR OPERATIONS SUMMARY 220	Prepared/Approved: Doug Ledgerwood	Prepared Time: 1800 hrs.
1. INCIDENT NAME: UMPQUA FIRES	2. OPERATIONAL PERIOD 09/19/2023	START TIME: 0700
	END TIME: 1900	SUNRISE: 0656
		SUNSET: 1915

3. REMARKS (Safety Notes, Hazards, Air Operations Special Equipment, etc.):
Smoky conditions * Steep terrain * Shadow effects
Only use approved dip sites. Do not cross contaminate water sources without sanitizing bucket/snorkel. All GPS data to be collected in DEGREES MINUTES, DECIMAL MINUTES.
 Avoid foam within 300' of waterways or bodies of water. Notify AOBD if this is not achieved
 Aircraft costs daily to: 2023.chilcoot.finance@firenet.gov and cc to 2023.chilcoot.airops@firenet.gov

4. READY ALERT AIRCRAFT:
N234BH Yellowstone Short Haul:
 @Grants Pass.
N38HX Teton Short Haul @ Sunriver.

5. TFR: #3/1276 (A15) North
 Freq 121.3750
 Surface to 9000ft MSL
 Operational 1500-0400 UTC
TFR: #3/7750 (A51) South
 Freq:132.525
 Surface to 8500 MSL
 Operational 1630-0400 UTC

6. PERSONNEL	NAME	PHONE #	7. FREQUENCIES	AM	FM
Glide Helibase					
AOBD	Doug Ledgerwood	541-852-0633	A/A TFR and Primary North	121.3750	165.9875
ASGS	Kevin Kozak	360-280-6714	A/G Primary (A-4) North		173.5000
			A/G Secondary (A-5) North	132.5250	167.1500
			A/A TFR and Primary South		170.2625
			A/G Primary (A-6) South		163.1000
			A/G Secondary (A-7) South		
			Deck Tone-156.7 (TX/RX)		
HEBM	Matt Quezada	760-379-6995			
HEBM(t)	Mario Melendez	661-912-8235			
ORRIC	Aircraft Desk	541-957-3325	IA A/G 49 USFS		168.0375
UAO	Jim Dotson	307-413-2024	IA A/G 81 USFS		166.9500
For IA: send flight strip to matthew.quezada@usda.gov					
HEBM(t) Mario.melendez@usda.gov					

8. FIXED-WING Avail/ Type/ Make-Model/ N#/ Base
AIRTANKERS: ORDER THRU ATGS
ATGS – order through Roseburg Dispatch
Landing Sites on Fire: See pilot map
Laying Cr Helispot: 43°42.698'N X 122°42.114'W 1224ft
Cottage Grove S61: 43°48.246'N X 123°1.923'W 641ft
Glide Helibase 43° 18.922' X 123° 4.415'
Tank Dips: See Pilot Map

LAKE DIPS:
Gertrude LK 43°35.698'N X 122°32.452'W 3990 ft
Crawfish Lk 43°37.502'N X 122°42.222'W 4794 ft
Crystal Lk 43°35.602 N X 122°38.655 W 4650 ft
Elephant Lake 43°35.742 X 122°39.237 W 5126 ft

FAA N#	T Y	MAKE/ MODEL	BASE	START	AVAIL	REMARKS	FAA N#	T Y	MAKE/ MODEL	BASE	START	AVAIL	REMARKS
N274TH (A-9)	1	UH-60	Glide	0700	0800		32HX (A-19)	3	AS 350	Glide	0700	0800	11 personnel
526MW (A-10)	1	KMAX	Glide	0700	0800								
N357KA (A-57)	1	KMAX	Glide	0900	0930								
N933CH(A-39)	2	Bell 205 A1	Glide	0700	0800	15 personnel	NR474A	3	UR-31(A-26)	Glide	0700		Ryan Gregg Mngr: 360-852-2296
H377PA(A-20)	2	Bell 212	Glide	0700	0800	8 personnel							

HEALTH AND SAFETY MESSAGE

INCIDENT: Chilcoot, Grizzly, Ridge Brice, Dinner

DATE: September 19, 2023

We are ALL accountable for SAFE behaviors

Mission Creep: The gradual or incremental expansion of an intervention, project or mission, beyond its original scope, focus or goals. Mission creep can be caused by initial success, changing needs, or lack of clear objectives.

Examples of Mission Creep

- Performing unnecessary tasks leading to unnecessary exposure
- Going outside of your qualifications or capabilities
- Taking independent action and not staying with the plan or objectives
-

Potential Hazards associated with Mission Creep

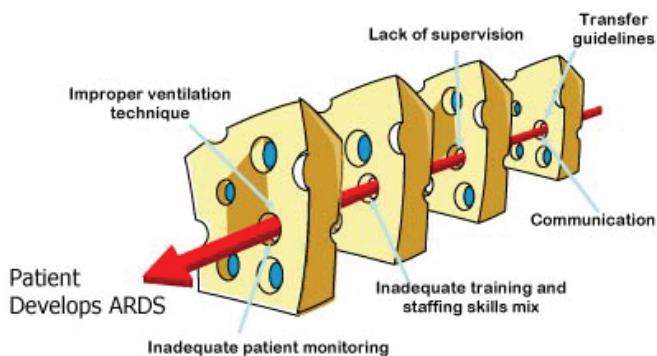
- Working in an unfamiliar area that may not have the hazards mitigated
- Performing a task that puts you or your co-workers in danger
- Failure to maintain situational awareness and creating unnecessary risk

KNOW:

- **TASK.....What is to be done.....Strategy and tactics**
- **PURPOSE.....Why it is to be done.....Big picture.....who, what, when, where, why, etc.....**
- **END STATE.....How it should look when done....Quantify your expectations.....Leaders Intent**

Situation Awareness

- **Speak up if you see something that looks wrong!!!**
- **Get a good briefing prior to beginning task**
- **Ask if you don't understand!!!!**



HELP BREAK THE "ERROR CHAIN"!!!



"I lift, you grab. ... Was that concept just a little too complex, Carl?"

Give clear instructions and be sure they are understood.

LOGISTICS PAGE

Strader ICP:

Email orders to 2023.chilcoot.ordering@firenet.gov

Location	373 French Creek Road Glide OR, 97443
Supply	Hours: 0600 - 2130
Ground Support	Hours: 0600 - 2130
Fuel Truck	Hours: 0630 - 2100
Weed Wash	Hours: 0700 - 2000
Meals	Hours: Breakfast – 0600 - 0930 & Dinner – 1800 - 2100
Laundry	Hours: 0500 - 2200
Showers	Hours: 0500 - 1200 & 1400-2200

Sharps Creek Base Camp:

Email orders to 2023.dinner.ordering@firenet.gov

Location	73792 Sharps Creek Road Dorena OR, 97434
Supply	Hours: 0600 - 2130
Ground Support	Hours: 0600 - 2200
Fuel Truck	Hours: 0600 - 2200
Weed Wash	Hours: 0700 - 2000
Meals	Hours: Breakfast – 0600 - 0830 & Dinner – 1700 - 2030
Laundry	Hours: 0600-0900 1800-2100 drop off at Ground Support for 24 hour return
Showers	Hours: 0600 - 1200 & 1400 - 2200

1-Mile Hose Kit for PNW Team 6

Please note this is what will be sent out with an order for a 1- mile hose kit from supply with Team 6.

NFES	QUANTITY	ISSUE	DESCRIPTION
1239	50	LG	1 1/2" Hose
1238	25	LG	1" Hose
1016	50	LG	3/4" Hose
0010	25	EA	Reducers 1 1/2" to 1"
0733	20	EA	Reducers 1" to 3/4"
0231	25	EA	1 1/2" Gated Wyes
0259	20	EA	1" Gated Wyes
0904	25	EA	3/4" Gated Wyes
0024	25	EA	Forrester Nozzles
0136	25	EA	Garden Nozzle
0738	25	EA	3/4" Shut Off
0664	2	EA	Fold a Tank 1500 gal
3870	2	EA	Mark III Kits
0606	3	EA	Can, safety
7724	3	EA	Oil, 2 stroke mix
0805	3	EA	Tags, 2 stroke
0148	2	EA	Pump, Mk III

INCIDENT RADIO COMMUNICATIONS PLAN (ICS 205)

Controlled Unclassified Information //Basic

1. Incident Name:		2. Date Prepared:		3. Operational Period:	
CHILCOOT/GRIZZLY/RIDGE/BRICE/DINNER FIRES		Date: 09/18/23		Date/Time from: 09/19/23 0700 HRS	
Date/Time To: 09/20/23 0700 HRS					

Zone Group	Ch #	Function	Channel Name/Trunked Radio System Talk Group	Assignment	RX Freq	RX Tone/NAC	TX Freq	TX Tone/NAC	Mode (A.O. 0<M)	Remarks
	1	TACTICAL	TAC 1	DIV A / C / D / J	168.0500	167.9	168.0500	167.9	A	DIVISION ALPHA, CHARLIE DELTA AND JULIET TACTICAL
	2	TACTICAL	TAC 2	DIV E and W	168.2000	167.9	168.2000	167.9	A	DIVISION ECHO AND WHISKEY TACTICAL
	3	TACTICAL	TAC 3	DIV H	168.6000	167.9	168.6000	167.9	A	DIVISION HOTEL TACTICAL
	4	TACTICAL	TAC 4	DIV S / Z	166.7250	167.9	166.7250	167.9	A	DIVISION SIERRA / ZULU TACTICAL
	5	AIR TO GROUND	A/G PRI N	AIR TO GROUND PRIMARY	165.9875	NONE	165.9875	NONE	A	AIR TO GROUND OPERATIONS, PRIMARY
	6	AIR TO GROUND	A/G SEC N	AIR TO GROUND SECONDARY	173.5000	NONE	173.5000	NONE	A	AIR TO GROUND OPERATIONS, SECONDARY
	7	COMMAND	CMD 7	COMMAND	169.7500	167.9	167.1000	167.9	A	COMMAND 7- LOCATED ON SCOTT MOUNTAIN
	8	COMMAND	CMD 8	COMMAND	173.7125	167.9	162.6000	167.9	A	COMMAND 8- LOCATED ON PIG IRON LOOKOUT
	9	COMMAND	CMD 9	COMMAND	173.6000	167.9	169.4625	167.9	A	COMMAND 9- LOCATED ON CHILCOOT MOUNTAIN
	10	COMMAND	CMD 10	COMMAND	169.8375	167.9	162.4625	167.9	A	COMMAND 10- LOCATED ON LOOKOUT MOUNTAIN
	11	COMMAND	CMD 11	COMMAND	170.0625	167.9	162.4375	167.9	A	COMMAND 11- LOCATED ON FAIRVIEW LOOKOUT
	12	TACTICAL	TAC 12	ROAD MAINTENANCE	168.2500	167.9	168.2500	167.9	A	ROAD MAINTENANCE TACTICAL
	13	AIR TO GROUND	A/G PRI S	AIR TO GROUND PRIMARY	167.1500	NONE	167.1500	NONE	A	AIR TO GROUND OPERATIONS, PRIMARY
	14	AIR TO GROUND	A/G SEC S	AIR TO GROUND SECONDARY	170.2625	NONE	170.2625	NONE	A	AIR TO GROUND OPERATIONS, SECONDARY
	15	AIR TO GROUND	VMED29	MEDICAL	155.3475	156.7	155.3475	156.7	A	MEDICAL USE ONLY
	16	AIR GUARD	AIR GUARD	ALL DIVS	168.6250	NONE	168.6250	110.9	A	EMERGENCY USE ON LY

5. Special Instructions:	

6. Prepared By (Communications Unit Leader)	Signature <i>Berry Mathias</i>
Communications staffed 0600-2200 hours. Phone: (949) 648-1591	Date/Time: 09/18/23 12:30 HRS

Controlled Unclassified Information//Basic
FINAL

Finance Email:

- 2023.dinner.finance@firenet.gov
- 2023.chilcoot.finance@firenet.gov

FINANCE CHECK IN:

- 2023.dinner.finance@firenet.gov
- 2023.chilcoot.finance@firenet.gov



Finance can be reached at:

Contractors: 971-713-0374; Overhead: 971-727-5250

COMP/CLAIMS – 971-245-0248

Agency Overhead	Agency AD's / EFF's	Agency Crews	Contract Crews / Equipment	Cooperators
Resource Orders (RO)	Resource Orders (RO)	Resource Orders (RO)	Resource Orders (RO)	Resource Orders (RO)
Signed CTR	Casual Hire Form Signed CTR	Manifest Signed CTR	Manifest Agreement Inspections Signed Shift Ticket / CTR	Agreement Signed Shift Ticket / CTR

Tip on a Complete CTR / Shift Ticket:

- Resource Order Number
- Correct dates and work time
- Total hours added for each day
- Signed by Division or above (Include O-# by signed official)
- Justification are required for all:
 - Hazard Pay – Hazard for fighting uncontrolled fire on fireline.
 - Excessive shifts (Example: air travel to incident, burnout operations, initial attack)
 - No meal break shown

NOTE: ON THE TOP OF YOUR CTR OR SHIFT TICKET, PLEASE INDICATE THE FIRE YOU WERE ORDERED ON. ADD IN REMARKS SECTION ON CTR OR SHIFT TICKET, THE "FIRE NAME" THAT YOU WORKED ON.

Information Section

Do you or the public need to reach the PIOs?

Phone: (541) 900-5862

Emails: Brice Creek/Dinner/Grizzly: 2023.dinner@firenet.gov

Chilcoot/Ridge: 2023.chilcoot@firenet.gov

Please email us your photos! (And don't forget your PPE 😊)



Chilcoot and Ridge Fires Information



Brice, Dinner, and Grizzly Fires Information

Scan the codes above to access links to each of the official sources of information on all five of the Umpqua Fires—from InciWeb to Facebook to email addresses, it's all there!

Sharps Creek (Dorena PO)

Dorena Post Office: C/O (Your Name)
75694 Wicks Road
Dorena, OR 97434



Notes on Dorena PO pick-up:

Persons picking up the mail must present ID for their mail.

Business hours:

9 AM- 1 PM Monday -Friday

11 AM- 12 PM Saturday

(Closed Sundays)

Strader ICP

(North Umpqua Ranger District):

Address your mail to:

C/O (Chilcoot Fire, Your Name, Resource Number)

North Umpqua Ranger District

18782 North Umpqua Highway

Glide, OR 97443

Notes on Strader pickup:

PIOs are checking mail daily; come visit our PIO trailer to get your items!



**Call or visit us if you've lost something!
We have a PIO shops in both Glide and
Sharps Creek**

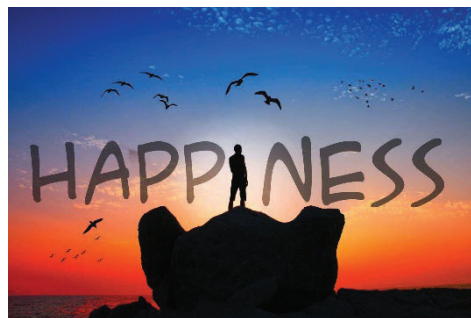


Human Resource Message

Umpqua Fires September 19, 2023

7 Steps to Happiness

- ♥ Think less, Feel More
- ♥ Frown Less, Smile More
- ♥ Talk Less, Listen More
- ♥ Judge Less, Accept More
- ♥ Watch Less, Do More
- ♥ Complain Less, Appreciate More
- ♥ Fear Less, Love More



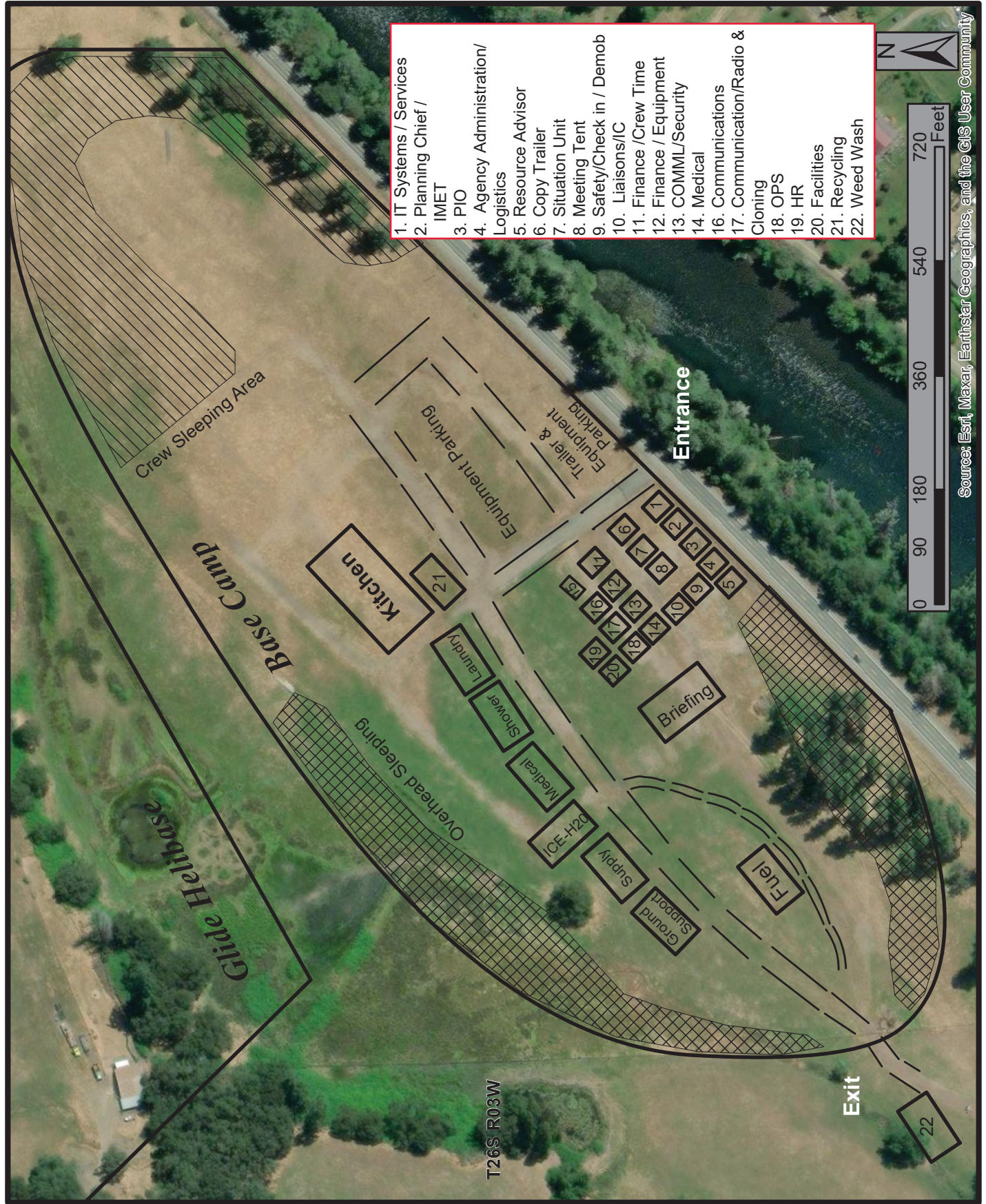
You can reach me by text or phone call at 503-575-8547. You can visit me in my yurt on the SW side of camp.

Have a safe shift and have a great day!

503-575-8547

Audrey Matsumonji
Human Resource Specialist

Chilcoot ICP Basecamp Map



Source: Esri, Maxar, Earthstar Geographics, and the GIS User Community

Extensions and Crew Swaps – NW 6

This is the Team Standard Operating procedure based on national policy

- **Resources may be demobed, regardless of crew status, if it is no longer needed.**
- Contract Crews are generally not extended unless replacement resources are scarce. Crews may swap crew members if needed by utilizing the crew swap form at the QR code below.
- Resources ordered on 'O' numbers cannot swap crew members (exception - some medical resources). These resources can extend depending on availability and needs of the incident. See Plans for a resource extension form.

Contracted Fireline Equipment Crew Swap Procedure

- Contract equipment may stay on the incident until it is no longer needed, a maximum dollar amount is reached, or replacement crew members cannot be provided.
- It is the responsibility of the contract owner to track their crew members and ensure they maintain proper work/rest ratios. The IMT assumes contracted equipment will swap crew members as needed to provide adequate rest for their employees.
- Non-fireline equipment personnel (like hand wash stations) are not tracked other than a current onsite contact.
- If replacement crew members cannot be provided, this must be documented on an ICS-213 and provided to Operations and Plans at least 72 hours prior to the 14th workday. The resource will be demobed after 14 shifts OR an extension form may be completed based on operational need, see Plans for this form.
- Crew swaps MUST be tracked through the below QR code form as soon as known, no later than 1800 on the day prior to the swap. If the new crew member is the primary operator and any information in the IAP is incorrect, correct information MUST be provided to the Division Supervisor immediately following the operational briefing/division breakout.
- We prefer all members of a resource swap at once if possible. The crew swap form will need to be filled out for each individual crew member.
- Replacement workers must provide proof of current annual training upon request.
- The IMT will NOT track a last workday for these resources in the IAP unless:
 - It was determined to be excess to the needs of the incident and will demob
 - A resource was unable to provide replacement workers and will demob

QR code link to Umpqua Fires FTP page, then find button named **Crew Swap Form**



Please contact Plans after the briefing, at their office at either camp, or at Check-in if you have questions or wish to understand how your last workday/demob date was determined.



CHECK-IN PROCESS - ALL RESOURCES

**Grizzly (OR-UPF-000341) Dinner (OR-UPF-000357) Brice Creek (OR-UPF-000359)
Chilcoot (OR-UPF-000345) Ridge (OR-UPF-000346)**

STEP 1. Scan the QR code to fill out and submit the online check-in form.

- Have your resource order ready as many questions reference it.



STEP 2. Email your MANIFEST (if appropriate) depending on what incident you are assigned to. Include your request number in the subject line (e.g, E-118, O-48).

- If you are assigned to the Grizzly, Dinner or Brice Creek incidents, email to 2023.dinner.checkin@firenet.gov
- If you are assigned to the Chilcoot or Ridge incidents, email to 2023.chilcoot.checkin@firenet.gov

STEP 3. See Finance page of IAP for further instructions on how to check in with finance.

STEP 4. Complete vehicle inspection as instructed in your resource order, including contract inspection as needed.

If you have any issues, please contact Check-in at (208) 891-6286 or by email at 2023.chilcoot.checkin@firenet.gov or 2023.dinner.checkin@firenet.gov

Umpqua Fires

Demob Check-Out Instruction Form

Pick up Demob Check-Out form at BRIEFING (IAP) or PLANNING to begin Process

RO # _____ Resource Name _____ Fire: _____ Date: _____

Initial

Follow these steps in the order below:

- _____ 1. **Weed Wash** – ALL line resources that went off-road will need to go through a Weed Wash in your specific fire location. **If not needed, proceed to step 2.**
- _____ 2. **Ground support** – Contractors must stop to sign their release inspection. The inspection is optional for agency resources. **Agency resources proceed to step 3.**
- _____ 3. **Supply** – Return any items you checked out. All units must have an initial from SUPPLY confirming all equipment has been returned.
- _____ 4. **Communications** – Return any items you checked out. All units must have an initial from COMMUNICATIONS confirming all radio equipment has been returned.
- _____ 5. **Finance** – Proceed to finance to receive your final timesheet. Having ALL your times turned in and up to date will GREATLY speed up the process.
- _____ 6. **Demob – Final step.** Return completed Demob Check-Out form and any Documentation to Demob/Check-in. Documentation can also be emailed to 2023.chilcoot.docs@firenet.gov Contact Demob at 509-432-6143 with your estimated time of departure, arrival time and destination. You will not be released from the incident with Dispatch until this is completed.

ALL AIR TRAVELERS

Submit your request 72 hours prior to flight date through the QR Code on the IAP Cover. Call 509-432-6143 for any questions or assistance.

NIGHT SHIFT PERSONNEL

All night shift personnel coming off the line will be required to meet work/rest requirements before completing the Demob process.

EXTENSIONS AND CREW SWAPS

All extension/crew swap processes should be done at least 48 hours before your last working day to help facilitate Operational resources and the Demob process.

Demob List for Tuesday 09/19/2023

DINNER – BRICE CREEK - GRIZZLY FIRES				
E-12	0800	VROL	MARK JONES	GRIZZLY
O-4	0730	TFLD	MASTERS, JACK	GRIZZLY
O-125	0800	SEC2	MITCHELL, JEFFREY	DINNER
CHILCOOT - RIDGE FIRES				
E-32	0700	AMB2	PARAMEDICS UNLIMITED	CHILCOOT
O-58	0700	EMTF	CAUDILL, SOREN	CHILCOOT
O-64	0715	EMPF	DOBSON, RICH	CHILCOOT
O-177	0730	EMTF	KIME, ANASTASIA	CHILCOOT
O-141	0745	BCMG	JENSEN, EDWARD	CHILCOOT
O-184	0800	HEQB	NORTON, SHILOW	CHILCOOT
O-217	0815	SECG	PERRY, MICHAEL	CHILCOOT
O-218	0830	FFT2	GROS, JACOB	CHILCOOT
O-208	1300	BCMG	AXE, MATHEW	CHILCOOT

Demob List for Wednesday 09/20/2023

DINNER – BRICE CREEK - GRIZZLY FIRES				
C-8	0700	CR2I	POTOMIC RIVER	GRIZZLY
O-71	0700	COMT	CAMPBELL, DUNCAN	DINNER
O-122	0730	SECM	HUFFMAN, RAMOND	DINNER
CHILCOOT – RIDGE FIRES				
O-215	0700	GSUL	MACIAS, MIGUEL	CHILCOOT
O-63	0800	EMPF	GIBSON, TOM	CHILCOOT
O-73	0830	RES	ROUGH COUNTRY	CHILCOOT
O-191	1900	COMT	ROSS, JAMES	CHILCOOT
O-90	1800	SOFR	GOYETTE, MICHAEL	CHILCOOT
O-225	1800	EQPM	MAZON, PHILLIP	CHILCOOT
O-277	2200	DMOB	HESTON, MIKE (VIRTUAL)	CHILCOOT

Demob List for Thursday 09/21/2023

DINNER – BRICE CREEK - GRIZZLY FIRES				
E-7	0700	STK1	TIMBER BASIN	DINNER
E-8	0730	CHP2	DARRELL GREEN	GRIZZLY
O-128	0730	SECG	WILLIAMS, HEATHER	DINNER
O-240.53	0800	PIO2	ANDERSON, JOE	CHILCOOT
CHILCOOT - RIDGE FIRES				
E-112	0730	WTT1	HYDROTACTICAL	CHILCOOT
O-121	0730	RADO	AINSWORTH, KEN	CHILCOOT
O-232	0800	SECM	DEANE, PETER	CHILCOOT
O-10003	0830	INBA	MILLER, JILL	CHILCOOT

Division/Group Assignment List (ICS 204 WF)
Controlled Unclassified Information//Basic

1. Incident Name:				3.		
UMPQUA FIRES				Branch:	Division/Group	
2. Operational Period: DAY						
Date/Time From: 09/19/2023 0700 TUE		Date/Time To: 09/19/2023 1900 TUE		BRICE CREEK A/C/D		
4. Operations Personnel						
OPERATIONS CHIEF		DAN MARTIN LARAE GUILLORY (T)		BRANCH DIRECTOR		
SAFETY OFFICERS		ERIC RISDAL SHANE THEALL		DIVISION/GROUP SUPERVISOR DOUG CATES		
5. Resources Assigned this Period						
Strike Team / Task Force / Resource Designator		LWD	Leader	Number Persons	Drop Off PT./Time	Pick Up PT./Time
O-240.32 SOF2		09/26	AL AUGUSTINE	1	SHARPS CREEK BASECAMP/0700	SHARPS CREEK BASECAMP/1900
O-16 TFLD (T)		09/30	BRIAN WHETSLER	1	SHARPS CREEK BASE CAMP/0700	SHARPS CREEK BASE CAMP/1900
O-240.69 TFLD (T)		09/25	MICHEAL DAKE	1	SHARPS CREEK BASE CAMP/0700	SHARPS CREEK BASE CAMP/1900
C-17 CR2I VALE SRV #12		09/23	JULIAN I JACOBO	24	SHARPS CREEK BASE CAMP/0700	SHARPS CREEK BASE CAMP/1900
C-18 CR2I CENTRAL OREGON #05		09/24	NICHOLAS FOEY	20	SHARPS CREEK BASE CAMP/0700	SHARPS CREEK BASE CAMP/1900
C-55 CRW2 IRON MOUNTAIN		09/29	FRANSCISCO CISNEROS	20	SHARPS CREEK BASE CAMP/0700	SHARPS CREEK BASE CAMP/1900
E-42 ENG4 METHOW RIVER			CINDY GAMEROS	3	SHARPS CREEK BASE CAMP /0700	SHARPS CREEK BASE CAMP /1900
E-25 ENG6 NORTH PACIFIC			PORFIRIO SERVIN	3	SHARPS CREEP BASE CAMP/0700	SHARPS CREEP BASE CAMP/1900
E-26 ENG6 FIRST STRIKE			HOLDEN HILLIKER	3	SHARPS CREEK BASE CAMP/0700	SHARPS CREEK BASE CAMP/1900
E-194 ENG6 DIAMOND FIRE			DANIEL EMEL	3	SHARPS CREEK BASE CAMP/0700	SHARPS CREEK BASE CAMP/1900
E-195 ENG6 VALLEY FIRE			ZACK SMITH	3	SHARPS CREEK BASE CAMP/0700	SHARPS CREEK BASE CAMP/1900
E-2 WTS2 RHY-DEM			RUSSEL ROBINSON	1	SHARPS CREEK BASE CAMP/0700	SHARPS CREEK BASE CAMP/1900
E-18 WTS2 IRELAND BROTHERS			ADAM FRASER	1	SHARPS CREEK BASE CAMP/0700	SHARPS CREEK BASE CAMP/1900
E-1 VUTV TOP GUN					SHARPS CREEK BASE CAMP/0700	SHARPS CREEK BASE CAMP/1900
E-16 VUTV TOP GUN					SHARPS CREEK BASE CAMP/0700	SHARPS CREEK BASE CAMP/1900
8. Division/Group Communication Summary						
Function	Channel	RX Frequency N/W	RX Tone/NAC	TX Frequency N/W	TX Tone/NAC	Mode
TACTICAL	TAC 1	168.0500	167.9	168.0500	167.9	A
COMMAND	CMD 11	170.0625	167.9	162.4375	167.9	A
AIR TO GROUND	A/G PRI N	165.9875		165.9875		A
AIR TO GROUND	A/G SEC N	173.5000		173.5000		A
AIR GUARD	AIR GUARD	168.6250		168.6250	110.9	A
9. Prepared By (Resource Unit Leader)			Approved By (Planning Section Chief)		Date	Time
JAMES MAHAFFY RESL (T)			KRISANN KOSEL		09/18/2023	2200

Division/Group Assignment List (ICS 204 WF)
Controlled Unclassified Information//Basic

1. Incident Name:			3.			
UMPQUA FIRES			Branch:		Division/Group	
2. Operational Period: DAY			BRICE CREEK A/C/D			
Date/Time From: 09/19/2023 0700 TUE		Date/Time To: 09/19/2023 1900 TUE				
4. Operations Personnel						
OPERATIONS CHIEF		DAN MARTIN LARAE GUILLORY (T)		BRANCH DIRECTOR		
SAFETY OFFICERS		ERIC RISDAL SHANE THEALL		DIVISION/GROUP SUPERVISOR		DOUG CATES
5. Resources Assigned this Period						
Strike Team / Task Force / Resource Designator		LWD	Leader	Number Persons	Drop Off PT./Time	Pick Up PT./Time
O-129 REAF		09/23	JEDIDIAH HANCOCK	1	SHARPS CREEK BASE CAMP/0700	SHARPS CREEK BASE CAMP/1900
O-29 REMS BEYOND THE EDGE (REMS 1)		09/26	JOE DECKER	4	SHARPS CREEK BASE CAMP/0700	SHARPS CREEK BASE CAMP/1900
6. Control Operations/Work Assignments:						
<p>TASK: Continue to hold, secure, and mop-up control lines. Monitor conditions in preparation to implement firing plan in direct areas. Utilize aircraft as necessary to moderate fire behavior. Snag along open roads.</p> <p>PURPOSE: Prevent fire from impacting values at risk, including communities to the west, commercial timberlands and T&E habitat. Provide for firefighter and public safety.</p> <p>END STATE: Fire is kept north of 22 RD, south of the 2216 RD, and east of the 732 RD. To protect the values at risk through the remainder of the fire season.</p>						
7. Special Instructions:						
<ul style="list-style-type: none"> Resources assigned to Division A/C will add BRICE CREEK FIRE to all CTR and SHIFT TICKETS, OR-UPF-000359 P6QLI4. Resources assigned to Division D need to add DINNER FIRE OR-UPF-000357 P6QLF5 (0615) to your CTR's and SHIFT TICKETS. Ensure signage is adequate at all drop points. Add signage to all major intersections to help with locating drop points. Mop-up and secure edges of two unburned pockets H-19 and H-191 are the nearest helispots for Division A/C. H-41 is the closest helispot for the Division D. 						
8. Division/Group Communication Summary						
Function	Channel	RX Frequency N/W	RX Tone/NAC	TX Frequency N/W	TX Tone/NAC	Mode
TACTICAL	TAC 1	168.0500	167.9	168.0500	167.9	A
COMMAND	CMD 11	170.0625	167.9	162.4375	167.9	A
AIR TO GROUND	A/G PRI N	165.9875		165.9875		A
AIR TO GROUND	A/G SEC N	173.5000		173.5000		A
AIR GUARD	AIR GUARD	168.6250		168.6250	110.9	A
9. Prepared By (Resource Unit Leader)			Approved By (Planning Section Chief)		Date	Time
JAMES MAHAFFY RESL (T)			KRISANN KOSEL		09/18/2023	2200

Division/Group Assignment List (ICS 204 WF)
Controlled Unclassified Information//Basic

1. Incident Name:			3.			
UMPQUA FIRES			Branch:		Division/Group	
2. Operational Period: DAY			GRIZZLY S/Z			
Date/Time From: 09/19/2023 0700 TUE		Date/Time To: 09/19/2023 1900 TUE				
4. Operations Personnel						
OPERATIONS CHIEF		DAN MARTIN LARAE GUILLORY (T)		BRANCH DIRECTOR		
SAFETY OFFICERS		ERIC RISDAL SHANE THEALL		DIVISION/GROUP SUPERVISOR		RORY HIETT
5. Resources Assigned this Period						
Strike Team / Task Force / Resource Designator		LWD	Leader	Number Persons	Drop Off PT./Time	Pick Up PT./Time
O-36 SOFC		09/19	RICHARD MCCONNELL	1	SHARPS CREEK BASE CAMP/0700	SHARPS CREEK BASE CAMP/1900
O-240.32 SOF2		09/26	AL AUGUSTINE	1	SHARPS CREEK BASECAMP/0700	SHARPS CREEK BASECAMP/1900
O-240.38 TFLD		09/26	LOGAN LAWSON	1	SHARPS CREEK BASE CAMP/0700	SHARPS CREEK BASE CAMP/1900
C-8.2 TFLD		09/29	PHILIP BRASS	1	SHARPS CREEK BASE CAMP/0700	SHARPS CREEK BASE CAMP/1900
C-8.12 TFLD (T)		09/29	ADAM CHRISTIE	1	SHARPS CREEK BASE CAMP/0700	SHARPS CREEK BASE CAMP/1900
O-11 WFM WARM SPRINGS		09/29	JOSHUA SOHAPPY	7	SHARPS CREEK BASE CAMP/0700	SHARPS CREEK BASE CAMP/1900
C-9 CRW1 UNION		09/30	ERIC JORGENSEN	21	SHARPS CREEK BASE CAMP/0700	SHARPS CREEK BASE CAMP/1900
C-8 CR2I POTOMAC		09/20	JARED ROGERS	20	SHARPS CREEK BASE CAMP/0700	SHARPS CREEK BASE CAMP/1900
E-7 WTS3 PACIFIC RIDGELINE			JUSTIN RIOLO	1	SHARPS CREEK BASE CAMP/0700	SHARPS CREEK BASE CAMP/1900
E-157 SKG2 MICHAEL SUTCH			NATHAN ARROWOOD	1	SHARPS CREEK BASE CAMP/0700	SHARPS CREEK BASE CAMP/1900
E-10000 DZR2 R & L		09/25	CHAD SCOFIELD	2	SHARPS CREEK BASE CAMP/0700	SHARPS CREEK BASE CAMP/1900
E-13 VUTV KD OUTDOORS LLC					SHARPS CREEK BASE CAMP/0700	SHARPS CREEK BASE CAMP/1900
E-84 VUTV KWIK RESPONSE					SHARPS CREEK BASE CAMP/0700	SHARPS CREEK BASE CAMP/1900
E-90 VUTV TOG GUN					SHARPS CREEK BASE CAMP/0700	SHARPS CREEK BASE CAMP/1900
O-15 FMOD B&M		09/29	NICK BROWNING	2	SHARPS CREEK BASE CAMP/0700	SHARPS CREEK BASE CAMP/1900
8. Division/Group Communication Summary						
Function	Channel	RX Frequency N/W	RX Tone/NAC	TX Frequency N/W	TX Tone/NAC	Mode
TACTICAL	TAC 4	166.7250	167.9	166.7250	167.9	A
COMMAND	CMD 11	170.0625	167.9	162.4375	167.9	A
AIR TO GROUND	A/G PRI N	165.9875		165.9875		A
AIR TO GROUND	A/G SEC N	173.5000		173.5000		A
AIR GUARD	AIR GUARD	168.6250		168.6250	110.9	A
9. Prepared By (Resource Unit Leader)			Approved By (Planning Section Chief)		Date	Time
JAMES MAHAFFY RESL (T)			KRISANN KOSEL		09/18/2023	2200

Division/Group Assignment List (ICS 204 WF)
Controlled Unclassified Information//Basic

1. Incident Name:			3.			
UMPQUA FIRES			Branch:		Division/Group	
2. Operational Period: DAY			GRIZZLY S/Z			
Date/Time From: 09/19/2023 0700 TUE		Date/Time To: 09/19/2023 1900 TUE				
4. Operations Personnel						
OPERATIONS CHIEF		DAN MARTIN LARAE GUILLORY (T)		BRANCH DIRECTOR		
SAFETY OFFICERS		ERIC RISDAL SHANE THEALL		DIVISION/GROUP SUPERVISOR		RORY HIETT
5. Resources Assigned this Period						
Strike Team / Task Force / Resource Designator		LWD	Leader	Number Persons	Drop Off PT./Time	Pick Up PT./Time
O-129 REAF		09/23	JEDIDIAH HANCOCK	1	SHARPS CREEK BASECAMP/0700	SHARPS CREEK BASECAMP/1900
O-15 REMS REMOTE ACCESS (REMS 3)		10/01	NOLAN HOWELL	4	SHARPS CREEK BASE CAMP/0700	SHARPS CREEK BASE CAMP/1900
E-64 AMB2 ROUGH COUNTRY (AMB 5)		10/01	ZACK CLARK	2	SHARPS CREEK BASE CAMP/0700	SHARPS CREEK BASE CAMP/1900
O-133 EMPF ADVENTURE MEDICS (MEDIC NELSON)		09/28	RUTH NELSON	1	SHARPS CREEK BASE CAMP/0700	SHARPS CREEK BASE CAMP/1900
6. Control Operations/Work Assignments:						
<p>TASK: Take action on the Grizzly fire using Using Champion Creek RD to prevent fire spread to the west.</p> <p>PURPOSE: Prevent fire from impacting values at risk, including private residences, communities to the west, historic mining community and infrastructure and commercial timberlands.</p> <p>END STATE: Fire is kept north and west of the 2212 RD, east of the 2473 RD, and south of 22 RD, to protect the values at risk through the remainder of fire season. Structures are prepped and secured.</p>						
7. Special Instructions:						
<ul style="list-style-type: none"> All resources assigned to this division need to add Grizzly Fire OR-UPF-000341 P6QL0W (0615) to your CTR's and shift tickets. H-191 is the nearest helispot for Division S/W. 						
8. Division/Group Communication Summary						
Function	Channel	RX Frequency N/W	RX Tone/NAC	TX Frequency N/W	TX Tone/NAC	Mode
TACTICAL	TAC 4	166.7250	167.9	166.7250	167.9	A
COMMAND	CMD 11	170.0625	167.9	162.4375	167.9	A
AIR TO GROUND	A/G PRI N	165.9875		165.9875		A
AIR TO GROUND	A/G SEC N	173.5000		173.5000		A
AIR GUARD	AIR GUARD	168.6250		168.6250	110.9	A
9. Prepared By (Resource Unit Leader)			Approved By (Planning Section Chief)		Date	Time
JAMES MAHAFFY RESL (T)			KRISANN KOSEL		09/18/2023	2200

Division/Group Assignment List (ICS 204 WF)
Controlled Unclassified Information//Basic

1. Incident Name:				3.		
UMPQUA FIRES				Branch:	Division/Group	
2. Operational Period: DAY						
Date/Time From: 09/19/2023 0700 TUE		Date/Time To: 09/19/2023 1900 TUE		GRIZZLY NIGHT		
4. Operations Personnel						
SAFETY OFFICERS				OPERATIONS CHIEF DAN MARTIN LARAE GUILLORY (T)		
BRANCH DIRECTOR				DIVISION/GROUP SUPERVISOR		
5. Resources Assigned this Period						
Strike Team / Task Force / Resource Designator		LWD	Leader	Number Persons	Drop Off PT./Time	Pick Up PT./Time
O-11 WFM WARM SPRINGS		09/29	JOSHUA SOHAPPY	7	SHARPS CREEK BASE CAMP/1900	SHARPS CREEK BASE CAMP/0700
E-63 AMB2 WILDERNESS MEDICS (AMBO 4)		09/26	MATT ROTH	2	SHARPS CREEK BASE CAMP/1900	SHARPS CREEK BASE CAMP/0700
6. Control Operations/Work Assignments:						
<p>TASK: Assess need to take action on the Grizzly fire using pre-identified actions as defined in the management action points.</p> <p>PURCHASE: Prevent fire from impacting values at risk, including private residences, communities to the west, historic mining community and infrastructure and commercial timberlands.</p> <p>END STATE: Fire is kept east of Channel Creek, to protect the values at risk through the remainder of fire season. Structures are prepped and secured.</p>						
7. Special Instructions:						
<ul style="list-style-type: none"> All resources assigned to this division need to add Grizzly Fire OR-UPF-000341 P6QL0W (0615) to your CTR's and shift tickets. H-191 is the nearest helispot for Division S/Z. 						
8. Division/Group Communication Summary						
Function	Channel	RX Frequency N/W	RX Tone/NAC	TX Frequency N/W	TX Tone/NAC	Mode
TACTICAL	TAC 4	166.7250	167.9	166.7250	167.9	A
COMMAND	CMD 11	170.0625	167.9	162.4375	167.9	A
AIR TO GROUND	A/G PRI N	165.9875		165.9875		A
AIR TO GROUND	A/G SEC N	173.5000		173.5000		A
AIR GUARD	AIR GUARD	168.6250		168.6250	110.9	A
9. Prepared By (Resource Unit Leader)			Approved By (Planning Section Chief)		Date	Time
JAMES MAHAFFY			KRISANN KOSEL		09/18/2023	2200

Division/Group Assignment List (ICS 204 WF)
Controlled Unclassified Information//Basic

1. Incident Name:			3.			
UMPQUA FIRES			Branch:		Division/Group	
2. Operational Period: 0700 - 1900			CHILCOOT E/W			
Date/Time From: 09/19/2023 0700 TUE		Date/Time To: 09/19/2023 1900 TUE				
4. Operations Personnel						
OPERATIONS CHIEF		DAN MARTIN LARAE GUILLORY (T)		SAFETY OFFICERS		ERIC RISDAL SHANE THEALL
BRANCH DIRECTOR				DIVISION/GROUP SUPERVISOR		NICK PETERS
5. Resources Assigned this Period						
Strike Team / Task Force / Resource Designator		LWD	Leader	Number Persons	Drop Off PT./Time	Pick Up PT./Time
O-90 SOFR		09/20	MICHAEL GOYETTE	1	STRADER ICP/0700	STRADER ICP/1900
O-265 SOFR		09/26	MICHAEL JOHNSON	1	STRADER ICP/0700	STRADER ICP/1900
O-314 TFLD		09/28	TOM SCHOENFELDER	1	STRADER ICP/0700	STRADER ICP/1900
O-240.71 TFLD (T)		09/25	MEGAN HURRELL	1	STRADER ICP/0700	STRADER ICP/1900
O-14 HEQB		09/29	ETHAN REDDIC	1	STRADER ICP/0700	STRADER ICP/1900
C-47 CR2I SRV #10		09/23	ANDRES HERNADEZ	25	STRADER ICP/0700	STRADER ICP/1900
C-50 CRW2 GFP		09/25	JESSE SZABO	20	STRADER ICP/0700	STRADER ICP/1900
C-51 CRW2 OROZCO		09/24	CHRIS OROZCO	20	STRADER ICP/0700	STRADER ICP/1900
E-4 ENG4 TORRES 5		10/02	HARLEY MEAD	3	STRADER ICP/0700	STRADER ICP/1900
E-188 ENG4 ORUPF E424		09/22	JEFF CASE	5	STRADER ICP/0700	STRADER ICP/1900
E-183 ENG6 TIMBER TIPPER			KEITH REID	3	STRADER ICP/0700	STRADER ICP/1900
E-185 ENG6 GRAYBACK E25			ARIC PAUL	3	STRADER ICP/0700	STRADER ICP/1900
E-186 ENG6 FENIX			SUZANNE FLYNN	3	STRADER ICP/0700	STRADER ICP/1900
E-112 WTT1 HYDROTACTICAL			DANIEL WARNER	2	STRADER ICP/0700	STRADER ICP/1900
E-178 WTS2 SIMONS			MATTHEW HOLMES	1	STRADER ICP/0700	STRADER ICP/1900
8. Division/Group Communication Summary						
Function	Channel	RX Frequency N/W	RX Tone/NAC	TX Frequency N/W	TX Tone/NAC	Mode
TACTICAL	TAC 2	168.2000	167.9	168.2000	167.9	A
COMMAND	CMD 9	173.6000	167.9	169.4625	167.9	A
COMMAND	CMD 10	169.8375	167.9	162.4625	167.9	A
AIR TO GROUND	A/G PRI S	167.1500		167.1500		A
AIR TO GROUND	A/G SEC S	170.2625		170.2625		A
AIR GUARD	AIR GUARD	168.6250		168.6250	110.9	A
9. Prepared By (Resource Unit Leader)			Approved By (Planning Section Chief)		Date	Time
STEPHANIE FALCON			KRISANN KOSEL		09/18/2023	2200

Division/Group Assignment List (ICS 204 WF)
Controlled Unclassified Information//Basic

1. Incident Name:				3.		
UMPQUA FIRES				Branch:	Division/Group CHILCOOT E/W	
2. Operational Period: 0700 - 1900						
Date/Time From: 09/19/2023 0700 TUE		Date/Time To: 09/19/2023 1900 TUE				
4. Operations Personnel						
OPERATIONS CHIEF		DAN MARTIN LARAE GUILLORY (T)		SAFETY OFFICERS		ERIC RISDAL SHANE THEALL
BRANCH DIRECTOR				DIVISION/GROUP SUPERVISOR		NICK PETERS
5. Resources Assigned this Period						
Strike Team / Task Force / Resource Designator		LWD	Leader	Number Persons	Drop Off PT./Time	Pick Up PT./Time
E-177 DZR2 PARKHURST			KRAIG CERMAK	2	STRADER ICP/0700	STRADER ICP/1900
E-10016 CHP2 IRA TORRES			ADAN CHAVEZ	3	STRADER ICP/0700	STRADER ICP/1900
E-10017 CHP2 IRA TORRES			ISMAEL LOPEZ	3	STRADER ICP/0700	STRADER ICP/1900
O-225 EQPM (T)		09/20	PHILLIP MAZON	1	STRADER ICP/0700	STRADER ICP/1900
E-137 WTS2 ON THE GO H2O			TIM SCHMIDT	1	STRADER ICP/0700	STRADER ICP/1900
E-138 WTS2 COWBOY FIRE			MALIKI PARKER	1	STRADER ICP/0700	STRADER ICP/1900
E-200 WTS2 M & M			MARK CSERNAK	1	STRADER ICP/0700	STRADER ICP/1900
E-114 EXC2 SCOTT MARSHALL			SCOTT MARSHALL	2	STRADER ICP/0700	STRADER ICP/1900
E-6 GRD1 MARK JONES			JESS CALVERT	2	STRADER ICP/0700	STRADER ICP/1900
E-12 VROL MARK JONES			JUSTIN MURPHY	1	STRADER ICP/0700	STRADER ICP/1900
O-142 REAF		09/24	BRADY DODD	1	STRADER ICP/0700	STRADER ICP/1900
O-143 REAF		09/21	MADELYN HOUSTON	1	STRADER ICP/0700	STRADER ICP/1900
O-233 REAF		09/21	DANE SJODEN	1	STRADER ICP/0700	STRADER ICP/1900
O-238 REAF		09/21	CHRIS MCGRATH	1	STRADER ICP/0700	STRADER ICP/1900
8. Division/Group Communication Summary						
Function	Channel	RX Frequency N/W	RX Tone/NAC	TX Frequency N/W	TX Tone/NAC	Mode
TACTICAL	TAC 2	168.2000	167.9	168.2000	167.9	A
COMMAND	CMD 9	173.6000	167.9	169.4625	167.9	A
COMMAND	CMD 10	169.8375	167.9	162.4625	167.9	A
AIR TO GROUND	A/G PRI S	167.1500		167.1500		A
AIR TO GROUND	A/G SEC S	170.2625		170.2625		A
AIR GUARD	AIR GUARD	168.6250		168.6250	110.9	A
9. Prepared By (Resource Unit Leader)			Approved By (Planning Section Chief)		Date	Time
STEPHANIE FALCON			KRISANN KOSEL		09/18/2023	2200

Division/Group Assignment List (ICS 204 WF)
Controlled Unclassified Information//Basic

1. Incident Name:				3.		
UMPQUA FIRES				Branch:	Division/Group CHILCOOT E/W	
2. Operational Period: 0700 - 1900						
Date/Time From: 09/19/2023 0700 TUE		Date/Time To: 09/19/2023 1900 TUE				
4. Operations Personnel						
OPERATIONS CHIEF		DAN MARTIN LARAE GUILLORY (T)		SAFETY OFFICERS		ERIC RISDAL SHANE THEALL
BRANCH DIRECTOR				DIVISION/GROUP SUPERVISOR		NICK PETERS
5. Resources Assigned this Period						
Strike Team / Task Force / Resource Designator		LWD	Leader	Number Persons	Drop Off PT./Time	Pick Up PT./Time
O-72 REMS BACKCOUNTRY RESCUE (REMS 11)		09/23	JOHN MEYER	5	STRADER ICP/0700	STRADER ICP/1900
E-175 AMB2 BEST PRACTICE (AMB 44)		09/22	DEVIN BEST	2	STRADER ICP/0700	STRADER ICP/1900
O-63 EMPF (MEDIC GIBSON)		09/19	TOM GIBSON	1	STRADER ICP/0700	STRADER ICP/1900
6. Control Operations/Work Assignments:						
<p>TASK: Patrol and mop-up any threats to containment line within the division. Chip any remaining debris piles along the 3806, 400, and 3809 roads. Grade and roll 3809 road from the 3806 intersection to the 38 road intersection.</p> <p>PURPOSE: Prevent additional fire growth and repair and damage caused by suppression efforts.</p> <p>END STATE: Fire is contained west of 3806 road and 370 road.</p>						
7. Special Instructions:						
<ul style="list-style-type: none"> Utilize Chilcoot repeater. Mitigate snag hazard and implement the risk management process in tactical decisions. Support tactics that minimize impacts to private property. Avoid waterways with retardant applications and reduce impact to Salmon/Steelhead protected populations. Ensure signage is adequate to all drop points. Add signage at all major intersections to help with locating drop points. Resources assigned to this Division E should put OR-UPF-000345 Chilcoot P6QLF5 (0615) on all CTR's and shift tickets. Resources assigned to this Division W should put OR-UPF-000346 P6QLFA (0615) on the bottom of CTR's and shift tickets. H-57 is the nearest helispot for Division E. H-291 is the nearest helispot for Division W. 						
8. Division/Group Communication Summary						
Function	Channel	RX Frequency N/W	RX Tone/NAC	TX Frequency N/W	TX Tone/NAC	Mode
TACTICAL	TAC 2	168.2000	167.9	168.2000	167.9	A
COMMAND	CMD 9	173.6000	167.9	169.4625	167.9	A
COMMAND	CMD 10	169.8375	167.9	162.4625	167.9	A
AIR TO GROUND	A/G PRI S	167.1500		167.1500		A
AIR TO GROUND	A/G SEC S	170.2625		170.2625		A
AIR GUARD	AIR GUARD	168.6250		168.6250	110.9	A
9. Prepared By (Resource Unit Leader)			Approved By (Planning Section Chief)		Date	Time
STEPHANIE FALCON			KRISANN KOSEL		09/18/2023	2200

Division/Group Assignment List (ICS 204 WF)
Controlled Unclassified Information//Basic

1. Incident Name:			3.			
UMPQUA FIRES			Branch:		Division/Group	
2. Operational Period: 0700 - 1900			CHILCOOT H			
Date/Time From: 09/19/2023 0700 TUE		Date/Time To: 09/19/2023 1900 TUE				
4. Operations Personnel						
OPERATIONS CHIEF		DAN MARTIN LARAE GUILLORY (T)		SAFETY OFFICERS		ERIC RISDAL SHANE THEALL
BRANCH DIRECTOR				DIVISION/GROUP SUPERVISOR		JON MILES
5. Resources Assigned this Period						
Strike Team / Task Force / Resource Designator		LWD	Leader	Number Persons	Drop Off PT./Time	Pick Up PT./Time
O-265 SOFR		09/26	MICHAEL JOHNSON	1	STRADER ICP/0700	STRADER ICP/1900
E-190 ENG4 J3			JOSE ARIZMENDI	3	STRADER ICP/0700	STRADER ICP/1900
E-184 ENG6 DIAMOND FIRE			NICHOLAS KING	3	STRADER ICP/0700	STRADER ICP/1900
E-187 ENG6 FRANCO			REBECCA PICKERING	3	STRADER ICP/0700	STRADER ICP/1900
E-199 WTT1 NEVADA FORESTRY NDF-5181		09/29	JERRY SIMPSON	2	STRADER ICP/0700	STRADER ICP/1900
O-174 EMPF (MEDIC GIFFORD)		09/24	GREGGORY GIFFORD	1	STRADER ICP/0700	STRADER ICP/1900
6. Control Operations/Work Assignments:						
<p>TASK: Continue mop-up and securing along Hipower Creek. Continue lining and securing the fire edge at the head of Hipower creek. Monitor conditions and develop options as needed to burn out areas of dirty burn/ indirect line on the north edge of the fire near Hipower Creek.</p> <p>PURPOSE: To prevent fore from impacting values, such as nearby communities, private timberland, and critical infrastructure by limiting fire spread.</p> <p>END STATE: Fire is contained along existing fireline in Hipower creek, and south of the ridge line above the head of Hipower Creek.</p>						
7. Special Instructions:						
<ul style="list-style-type: none"> Mitigate aerial hazards, both standing live and snag trees. Survey work areas and implement the risk management process in all tactical decisions. Support tactics that minimize impacts to private timber and property. Avoid waterways with retardant applications and use screens to reduce impact to Salmo/ Steelhead protected populations. All resources assigned to this division need to out OR0UPF-000345 P6QLF5 (0615) on there CTR's and shift tickets. H-1 is the nearest helispot for Division H. 						
8. Division/Group Communication Summary						
Function	Channel	RX Frequency N/W	RX Tone/NAC	TX Frequency N/W	TX Tone/NAC	Mode
TACTICAL	TAC 3	168.6000	167.9	168.6000	167.9	A
COMMAND	CMD 8	173.7125	167.9	162.6000	167.9	A
COMMAND	CMD 9	173.6000	167.9	169.4625	167.9	A
AIR TO GROUND	A/G PRI S	167.1500		167.1500		A
AIR TO GROUND	A/G SEC S	170.2625		170.2625		A
AIR GUARD	AIR GUARD	168.6250		168.6250	110.9	A
9. Prepared By (Resource Unit Leader)			Approved By (Planning Section Chief)		Date	Time
STEPHANIE FALCON			KRISANN KOSEL		09/18/2023	2200

Division/Group Assignment List (ICS 204 WF)
Controlled Unclassified Information//Basic

1. Incident Name:			3.			
UMPQUA FIRES			Branch:		Division/Group	
2. Operational Period: 0700 - 1900					CHILCOOT J	
Date/Time From: 09/19/2023 0700 TUE		Date/Time To: 09/19/2023 1900 TUE				
4. Operations Personnel						
OPERATIONS CHIEF		DAN MARTIN LARAE GUILLORY (T)		SAFETY OFFICERS		ERIC RISDAL SHANE THEALL
BRANCH DIRECTOR				DIVISION/GROUP SUPERVISOR		DAN COTHREN
5. Resources Assigned this Period						
Strike Team / Task Force / Resource Designator		LWD	Leader	Number Persons	Drop Off PT./Time	Pick Up PT./Time
O-265 SOFR		09/26	MICHAEL JOHNSON	1	STRADER ICP/0700	STRADER ICP/1900
O-13 TFLD		09/28	JEREMY BRYANT	1	STRADER ICP/0700	STRADER ICP/1900
O-291 HEQB		09/29	BRIAN GENTIS	1	STRADER ICP/0700	STRADER ICP/1900
O-292 HEQB (T)		09/29	GARRETT GIBBS	1	STRADER ICP/0700	STRADER ICP/1900
C-49 CRW1 HELENA IHC		09/26	TIGHE STOYANOFF	25	STRADER ICP/0700	STRADER ICP/1900
C-53 CR2I WENATCHEE RIVER		09/26	BRIAN FLATTEN	18	STRADER ICP/0700	STRADER ICP/1900
C-52 CRW2 PACIFIC OASIS C-2		09/28	ALEX HESS	20	STRADER ICP/0700	STRADER ICP/1900
C-54 CRW2 PACIFIC OASIS		09/30	DONTE MARQUEZ	20	STRADER ICP/0700	STRADER ICP/1900
E-207 ENG3 ORUPF 34		10/02	VICENTE IRANZO	8	STRADER ICP/0700	STRADER ICP/1900
E-189 ENG4 DIAMOND FIRE			DEAN WILSON	3	STRADER ICP/0700	STRADER ICP/1900
E-13 WTS2 SCOTT MARSHALL			BENNEY YOKUM	1	STRADER ICP/0700	STRADER ICP/1900
E-173 WTS2 SCOTT MARSHALL			RICHARD JOHNSON	1	STRADER ICP/0700	STRADER ICP/1900
E-205 WTS2 WESTERN FIRES			RICHARD DAUGHERTY	1	STRADER ICP/0700	STRADER ICP/1900
E-206 WTS2 S5			JOHN YATES	1	STRADER ICP/0700	STRADER ICP/1900
E-24 DZR2 TOUGH EQUIPMENT			ROBERT ASHERIN	2	STRADER ICP/0700	STRADER ICP/1900
8. Division/Group Communication Summary						
Function	Channel	RX Frequency N/W	RX Tone/NAC	TX Frequency N/W	TX Tone/NAC	Mode
TACTICAL	TAC 1	168.0500	167.9	168.0500	167.9	A
COMMAND	CMD 9	173.6000	167.9	169.4625	167.9	A
COMMAND	CMD 10	169.8375	167.9	162.4625	167.9	A
AIR TO GROUND	A/G PRI S	167.1500		167.1500		A
AIR TO GROUND	A/G SEC S	170.2625		170.2625		A
AIR GUARD	AIR GUARD	168.6250		168.6250	110.9	A
9. Prepared By (Resource Unit Leader)			Approved By (Planning Section Chief)		Date	Time
STEPHANIE FALCON			KRISANN KOSEL		09/18/2023	2200

Division/Group Assignment List (ICS 204 WF)
Controlled Unclassified Information//Basic

1. Incident Name:				3.		
UMPQUA FIRES				Branch:	Division/Group CHILCOOT J	
2. Operational Period: 0700 - 1900						
Date/Time From: 09/19/2023 0700 TUE		Date/Time To: 09/19/2023 1900 TUE				
4. Operations Personnel						
OPERATIONS CHIEF		DAN MARTIN LARAE GUILLORY (T)		SAFETY OFFICERS		ERIC RISDAL SHANE THEALL
BRANCH DIRECTOR				DIVISION/GROUP SUPERVISOR		DAN COTHREN
5. Resources Assigned this Period						
Strike Team / Task Force / Resource Designator		LWD	Leader	Number Persons	Drop Off PT./Time	Pick Up PT./Time
E-158 SKG2 HARD HUNT			MARSHALL MEACHAM	2	STRADER ICP/0700	STRADER ICP/1900
E-136 UTV					STRADER ICP/0700	STRADER ICP/1900
E-137 UTV					STRADER ICP/0700	STRADER ICP/1900
O-142 REAF		09/24	BRADY DODD	1	STRADER ICP/0700	STRADER ICP/1900
O-143 REAF		09/21	MADELYN HOUSTON	1	STRADER ICP/0700	STRADER ICP/1900
O-233 REAF		09/21	DANE SJODEN	1	STRADER ICP/0700	STRADER ICP/1900
O-234 REAF		09/24	NATALIE MILLS	1	STRADER ICP/0700	STRADER ICP/1900
O-238 REAF		09/21	CHRIS MCGRATH	1	STRADER ICP/0700	STRADER ICP/1900
O-237 REAF (T)		09/25	ELIZABETH DAY	1	STRADER ICP/0700	STRADER ICP/1900
O-73 REMS ROUGH COUNTRY (REMS 22)		09/19	ANDREW PADDISON	4	STRADER ICP/0700	STRADER ICP/1900
E-142 AMB2 CARDINAL MEDICAL SOULTIONS (MED MOD 1)		09/23	CHARLES CARLSON	2	STRADER ICP/0700	STRADER ICP/1900
E-193 AMB2 FRONT LINE (AMB 55)		09/28	LANCE PUIG	2	STRADER ICP/0700	STRADER ICP/1900
8. Division/Group Communication Summary						
Function	Channel	RX Frequency N/W	RX Tone/NAC	TX Frequency N/W	TX Tone/NAC	Mode
TACTICAL	TAC 1	168.0500	167.9	168.0500	167.9	A
COMMAND	CMD 9	173.6000	167.9	169.4625	167.9	A
COMMAND	CMD 10	169.8375	167.9	162.4625	167.9	A
AIR TO GROUND	A/G PRI S	167.1500		167.1500		A
AIR TO GROUND	A/G SEC S	170.2625		170.2625		A
AIR GUARD	AIR GUARD	168.6250		168.6250	110.9	A
9. Prepared By (Resource Unit Leader)			Approved By (Planning Section Chief)		Date	Time
STEPHANIE FALCON			KRISANN KOSEL		09/18/2023	2200

Division/Group Assignment List (ICS 204 WF)
Controlled Unclassified Information//Basic

1. Incident Name:				3.		
UMPQUA FIRES				Branch:	Division/Group	
2. Operational Period: 0700 - 1900						
Date/Time From: 09/19/2023 0700 TUE		Date/Time To: 09/19/2023 1900 TUE		CHILCOOT J		
4. Operations Personnel						
OPERATIONS CHIEF		DAN MARTIN LARAE GUILLORY (T)		SAFETY OFFICERS		ERIC RISDAL SHANE THEALL
BRANCH DIRECTOR				DIVISION/GROUP SUPERVISOR		DAN COTHREN
5. Resources Assigned this Period						
Strike Team / Task Force / Resource Designator	LWD	Leader	Number Persons	Drop Off PT./Time	Pick Up PT./Time	
6. Control Operations/Work Assignments:						
TASK: Continue to take action to secure fire from the southwest corner of Hipower Creek to the 3803 RD. Complete fireline preparation on the indirect line off the 3803 RD. Monitor conditions and continue preparation for implementing firing plan in indirect areas.						
PURPOSE: To prevent fire from impacting nearby communities, private timberland, and critical infrastructure by limiting fire spread.						
END STATE: Fire is contained east of the forest boundary, west of the Hipower Bluffs and north of the indirect line connected to the 3803 RD.						
7. Special Instructions:						
<ul style="list-style-type: none"> Survey and mitigate aerial hazards including live trees and snags as needed. Implementing risk management process in all tactical decisions, utilize tactics that minimize impacts to private property. Avoid waterways with retardant. Use screens to reduce impact on salmon/ steelhead protected populations. Ensure signage is adequate at all drop points. Add signage at all major intersections to help with locating drop zones. All resources assigned to this Division need to put OR-UPF 000345 P6QLF5 (0615) on all CTR's and shift tickets. 						
8. Division/Group Communication Summary						
Function	Channel	RX Frequency N/W	RX Tone/NAC	TX Frequency N/W	TX Tone/NAC	Mode
TACTICAL	TAC 1	168.0500	167.9	168.0500	167.9	A
COMMAND	CMD 9	173.6000	167.9	169.4625	167.9	A
COMMAND	CMD 10	169.8375	167.9	162.4625	167.9	A
AIR TO GROUND	A/G PRI S	167.1500		167.1500		A
AIR TO GROUND	A/G SEC S	170.2625		170.2625		A
AIR GUARD	AIR GUARD	168.6250		168.6250	110.9	A
9. Prepared By (Resource Unit Leader)			Approved By (Planning Section Chief)		Date	Time
STEPHANIE FALCON			KRISANN KOSEL		09/18/2023	2200

MEDICAL PLAN (ICS 206 WF)

Controlled unclassified Information Basic

1. Incident/Project Name			2. Operational Period				
Umpqua Fires (Dinner, Brice Creek & Chilcoot)			Date/Time		9/19/2023 - 9/20/2023, 0600 - 0600		
3. Ambulance Services							
Name	Complete Address	Phone & EMS Frequency	Advanced Life Support				
			Yes	No			
South Lane Fire & Rescue	233 E. Harrison Ave, Cottage Grove, OR	Command Channel/911(Backup)	X				
Umpqua Valley Ambulance	1290 NE Cedar St. Roseburg OR	Command Channel/911 (backup)	X				
4. Air Ambulance Services							
Name		Phone	Type of Aircraft and Capability				
Commercial Air Ambulance		911 / 541-344-2211	Closest available based on availability				
Teton, N38HX		Command	Short Haul, Day time use only				
Yellowstone N234BH		Command Channel	Short Haul Capable (Grants Pass OR)				
Name Address	GPS Datum – WGS 84	Travel Time		Phone	Helipad		Level of Care
		Air	Gnd		Yes	No	
Mercy Medical Center 2700 NW Stewart Pkwy Roseburg, OR	Lat: N 43° 14.567' Long: W 123° 21.983' VHF:	30 min	1 hr	(541) 673-0611	X		Level III Trauma
PeaceHealth Cottage Grove Community MC 1515 Village Dr Cottage Grove, OR	Lat: N 43° 48.2292' Long: W 123° 2.3801' VHF:	15 min	30 Min	(541) 942-6646	X		Non Trauma
Sacred Heart MC Riverbend 3333 Riverbend Dr. Springfield, OR 97477	Lat: N 44° 04.876' Long: W 123° 01.588 VHF:	30 min	1 hr	(541) 222-6929	X		Level II Trauma
McKenzie-Willamette MC 1460 G St Springfield, OR 97477	Lat: N 44° 03.217' Long: W 123° 00.219' VHF:	30 min	1 hr	(541) 726-4580	X		Level III
Legacy Emanuel 2801 N Gantenbein Ave Portland OR 97227	Lat: N 45°32.66' Long: W 122° 40.18' VHF:	1 hr	2 hr 30 min	(503) 413-2285	X		Level I / Burn Center
6. Branch/Div/Group	Area Location Capability						
Sharps Creek Base Camp	O-210 MEDL Nokes, O-106 MEDL(t) Field E-105 AMBU 6 - Barto						
DIV S/Z (Grizzly)	E-64, AMBU 5 - Clark, O-15 REMS 3 - Howell, O-133 MEDIC Nelson						
DIV A/C (Brice Creek)	O-29, REMS 1- Decker						
DIV D (Dinner)	Unstaffed						
Night Shift (Grizzly)	E-63, AMBU 4 - Roth						
Chilcoot ICP	E-33 Camp Medical Station - Sargent O-246 MEDL Belino, O-240 Field MEDL Prasch, O-247 MEDL(t) Smith						
DIV E (Chilcoot)	O-63 MEDIC Gibson, O-72 REMS 11- Meyer, E-175 AMBU 44 - Best						
DIV H (Chilcoot)	O-174 MEDIC Gifford						
DIV J (Chilcoot)	E-142 MED. MOD 1 - Carlson, O-73 REMS 22 - Paddison E-193 AMBU 55- Puig (AMBU Arriving mid to late morning)						
8. Prepared By (Medical Unit Leader)	9. Date/Time	10. Reviewed By (Safety Officer)			11. Date/Time		
Paul Smith, MEDLT	9/18/2023	Shane Theall			9/18/2023		

IWI Procedures

Fire Line

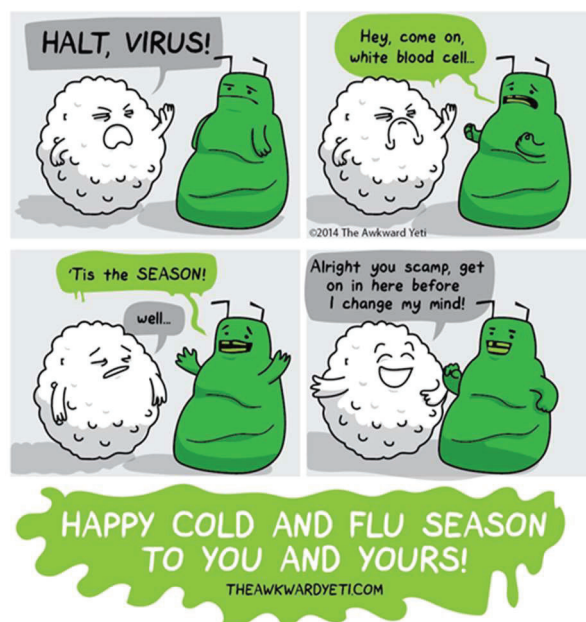
1. Request closest EMT/Medic to the injured person and report to DIV Supervisor.
2. Contact **Chilcoot Communications** and declare a “Red medical” (critical), “Yellow medical” (serious), or “Green medical” (minor). Request emergency radio traffic if needed.
3. Give location of patient and best access for initial responders.
4. Describe injury(s): Are they bleeding? How much? Are they conscious? Can they talk? Do they know what’s going on? How many people are hurt.
5. Gather information for MIR and relay to dispatch as soon as practical (see MIR back page)

Sharps Basecamp

1. Life threatening emergency, call 911
2. Call Chilcoot Communications on Command 7 or 8 or (310) 780-4296
3. Contact (go to) the medical tent.
4. Call the medical tent 310-780-4296

Strader ICP

1. Life threatening emergency, call 911
2. Call Chilcoot Communications on Command or 949-648-1591
3. Non-life-threatening go to blue medical trailer located between lunch trailer and laundry trailer



Don't encourage this relationship, please wash/sanitize your hands, drink lots of fluids, cover your coughs and get some sleep!!

ACTIVITY LOG (ICS 214)

1. Incident Name:		2. Operational Period: Date From: _____ Date To: _____ Time From: _____ Time To: _____	
3. Name:		4. ICS Position:	5. Home Agency (and Unit):
6. Resources Assigned:			
Name		ICS Position	Home Agency (and Unit)
7. Activity Log:			
Date/Time	Notable Activities		
8. Prepared by: Name: _____ Position/Title: _____ Signature: _____			
ICS 214, Page 1		Date/Time: _____	

MEDICAL PLAN (ICS 206 WF)

Controlled Unclassified Information//Basic

Medical Incident Report

FOR A NON-EMERGENCY INCIDENT, WORK THROUGH CHAIN OF COMMAND TO REPORT AND TRANSPORT INJURED PERSONNEL AS NECESSARY.

FOR A MEDICAL EMERGENCY: IDENTIFY ON SCENE INCIDENT COMMANDER BY NAME AND POSITION AND ANNOUNCE "MEDICAL EMERGENCY" TO INITIATE RESPONSE FROM IMT COMMUNICATIONS/DISPATCH.

Use the following items to communicate situation to communications/dispatch.

1. CONTACT COMMUNICATIONS / DISPATCH (Verify correct frequency prior to starting report)

Ex: "Communications, Div. Alpha. Stand-by for Emergency Traffic."

2. INCIDENT STATUS: Provide incident summary (including number of patients) and command structure.

Ex: "Communications, I have a Red priority patient, unconscious, struck by a falling tree. Requesting air ambulance to Forest Road 1 at (Lat./Long.) This will be the Trout Meadow Medical, IC is TFLD Jones. EMT Smith is providing medical care."

Severity of Emergency / Transport Priority	<input type="checkbox"/> RED / PRIORITY 1 Life or limb threatening injury or illness. Evacuation need is IMMEDIATE Ex: Unconscious, difficulty breathing, bleeding severely, 2 ^o – 3 ^o burns more than 4 palm sizes, heat stroke, disoriented.
	<input type="checkbox"/> YELLOW / PRIORITY 2 Serious Injury or illness. Evacuation may be DELAYED if necessary. Ex: Significant trauma, unable to walk, 2 ^o – 3 ^o burns not more than 1-3 palm sizes.
	<input type="checkbox"/> GREEN / PRIORITY 3 Minor Injury or illness. Non-Emergency transport Ex: Sprains, strains, minor heat-related illness.
Nature of Injury or Illness & Mechanism of Injury	Brief Summary of Injury or Illness (Ex: Unconscious, Struck by Falling Tree)
Transport Request	Air Ambulance / Short Haul/Hoist Ground Ambulance / Other
Patient Location	Descriptive Location & Lat. / Long. (WGS84)
Incident Name	Geographic Name + "Medical" (Ex: Trout Meadow Medical)
On-Scene Incident Commander	Name of on-scene IC of Incident within an Incident (Ex: TFLD Jones)
Patient Care	Name of Care Provider (Ex: EMT Smith)

3. INITIAL PATIENT ASSESSMENT: Complete this section for each patient as applicable (start with the most severe patient)

Patient Assessment: See IRPG page 106

Treatment:

4. TRANSPORT PLAN:

Evacuation Location (if different): (Descriptive Location (drop point, intersection, etc.) or Lat. / Long.) Patient's ETA to Evacuation Location:

Helispot / Extraction Site Size and Hazards:

5. ADDITIONAL RESOURCES / EQUIPMENT NEEDS:

Example: Paramedic/EMT, Crews, Immobilization Devices, AED, Oxygen, Trauma Bag, IV/Fluid(s), Splints, Rope rescue, Wheeled litter, HAZMAT, Extrication

6. COMMUNICATIONS: Identify State Air/Ground EMS Frequencies and Hospital Contacts as applicable

Function	Channel Name/Number	Receive (RX)	Tone/NAC *	Transmit (TX)	Tone/NAC *
COMMAND					
AIR-TO-GRND					
TACTICAL					

7. CONTINGENCY: Considerations: If primary options fail, what actions can be implemented in conjunction with primary evacuation method? Be thinking ahead.

8. ADDITIONAL INFORMATION: Updates/Changes, etc.

REMEMBER: Confirm ETA's of resources ordered. Act according to your level of training. Be Alert. Keep Calm. Think Clearly. Act Decisively.