

INCIDENT ACTION PLAN

DINNER GRIZZLY BRICE CREEK CHILCOOT RIDGE

THURSDAY

SEPTEMBER 21, 2023

Operational Period 0700-1900



NOTES:

Dinner

OR-UPF-000357
P6 QLJ7 (0615)

Grizzly

OR-UPF-000341
P6 QL0W (0615)

Brice Creek

OR-UPF-000359
P6 QLJ4 (0615)

Chilcoot

OR-UPF-000345
P6 QLF5 (0615)
221-ICU (DNR)

Ridge

OR-UPF-000346
P6 QLF4 (0615)

CREW SWAPS





MAPS

IAP

CHECK-IN

Incident Objectives (ICS 202)

1. Incident Name		2. Date Prepared		3. Time Prepared	
Umpqua Fires		9/20/2023		2000	
4. Operational Period (Date and Time)					
From:	9/21/2023	at	700	To:	9/21/2023 at 1900
5. Strategic Framework and Leaders Intent					
Strategic Framework:					
Implement suppression strategies that minimize impacts to identified values at risk, and that ensures firefighter and public safety are the top priority					
Specifically manage risk to firefighters by ensuring hazards are identified, assessed, and where possible mitigated. Be prepared to accept residual risk when exposure is commensurate with values threatened and the probability of achieving objectives is high.					
Leaders Intent:					
Engage in all work assignments with a high degree of professionalism and provide excellent customer service to all parties involved with the incident. All assigned personnel should:					
* Exhibit professional behavior					
* Ensure effective communication					
* Manage personal safety and the safety of others					
* Conduct effective fatigue management and implement work/rest cycles					
6. Management Objectives and Requirements					
Implement operational plans that establish holding features across the entire perimeter of each fire resulting in minimized duration and physical extent of each, and maximizing the protection of:					
* Highway 138 corridor					
* Private timber lands					
* Bohemia Mining District, Fairview Comm Site, Chilcoot Repeater, and other infrastructure					
* Active USFS timber sales					
* Natural and cultural resources					
Coordinate all fire suppression and repair work with Resource Advisors to protect natural and cultural values.					
Maintain effective relationships by ensuring timely information between the IMT, affected agencies, and the public.					
7. Operational Period Command Emphasis					
Work is progressing nicely in the fireline. Take some time to review taskbooks and complete evaluations. Contractors depend upon evaluations to maintain their status. Agency employees depend upon taskbooks and evaluations to stay in good standing with their home units and possibly to apply for new jobs. Target any previously unevaluated tasks if possible and ensure taskbooks are filled out completely and correctly. IMT 6 does not have a Training Specialist but there are several current and former unit fire training officers within the IMT that can answer any questions.					
8. Attachments (check if attached)					
X	Organization List (ICS 203)	X	Medical Plan (ICS 206)	X	Fire Behavior
X	Assignment List (ICS 204)	X	Safety Message		
X	Communications Plan (ICS 205)	X	General Forecast		
9. Prepared by (Planning Section Chief)			10. Approved by (Incident Commander)		
					

ORGANIZATION ASSIGNMENT LIST (ICS 203)

NORTHWEST TEAM 6					7. Operations Section				
1. Incident Name			Operations		DAN MARTIN / LARAE GUILLORY (T)				
GRIZZLY / DINNER / BRICE CREEK / CHILCOOT / RIDGE FIRES			Field Operations		JESS BOHNSACK / JOE PARR (T)				
2. Date		Time			Planning Operations		TRISH WALLACE / STEVE YOUNG (T)		
9/20/2023		2000			Planning Operations		TIM NUTLEY		
2a. Operational Period					Strategic Operations				
From: 9/21/2023 0700 To: 9/21/2023 1900									
3. Incident Commander(s) and Staff									
Incident Commander	TYSON ALBRECHT								
Deputy	ADAM VEALE / KEN PAUL / STEVE HAWKINS				DIVISION	BRICE CREEK	A/C/D	DOUG CATES	
Safety Officer	ERIC RISDAL / SHANE THEALL				DIVISION	GRIZZLY	S/Z	RORY HIETT	
Safety Officer	AL AUGUSTINE				DIVISION	GRIZZLY	NIGHT		
Medical Unit	JOHN NOKES / CHRISTY FIELD (T)				DIVISION	CHILCOOT	E/W	NICK PETERS	
Medical Unit	LAURA BELINO / PAUL SMITH (T)				DIVISION	CHILCOOT	H	JON MILES	
Information Officer	JODIE BARRAM / JESSICA REED (T)				DIVISION	CHILCOOT	J	DAN COTHREN	
Information Officer	NANCY JONES / JOE ANDERSON				DIVISION				
Liaison Officer	KIM TITUS / GARRIT CRAIG				DIVISION				
Human Resources	AUDREY MATSUMONJI / K.C. BRIGGS (T)								
					Branch Director				
					DIVISION				
					DIVISION				
4. Agency/Organization Representative									
UMPQUA NATIONAL FOREST	DAVID ANDERSEN / JIMMY TYREE				DIVISION				
UMPQUA NATIONAL FOREST	MARK SOMMER (T)				BRANCH				
WILLAMETTE NF	MOLLY JUILLERAT				Branch Director				
BLM - EUGENE	DENNIS TEITZEL					DIVISION			
BLM - ROSEBURG	HEATHER WHITMAN					DIVISION			
ODF	CHRIS CLINE / JOHN FLANNIGAN					DIVISION			
DFPA	PAUL RITTER				Branch Director				
LEAD READ	JED HANCOCK / BRADY DODD					GROUP			
USFS - SW IARR	MANUEL MARTINEZ					GROUP			
						GROUP			
5. Planning Section									
Chief	KRISANN KOSEL					GROUP			
Deputy	SUE PUDDY / JOHN NONEMAN / SHANNA MCCARTY					GROUP			
Resource Unit	STEPHANIE FALCON / JAMES MAHAFFY (T)								
Situation Unit	KENT ELLETT / DAMIEN HAWLEY-JONES (T)					GROUP			
Status Check-in	AMY BURT (T) / DIANA HECKATHORN (T)					DIVISION			
GISS	EMILY RUSH / ROBIN BIGGS (T) / DAVID HINES (T)					GROUP			
Fire Behavior	SARAH BUSH								
Meteorologist	JACK MESSICK / SPENCER TANGEN (T)								
DMOB									
DOCL	DEIDRE SMITH (V)								
FOBS									
					7b. Air Operations Branch				
					Air Operations Director	DOUG LEDGERWOOD			
					Air Support Supervisor	KEVIN KOZAK			
					Air Attack Supervisor				
6. Logistics Section					8. Finance/Administration Section				
Chief	JOE NEER / CINDY WEDEKIND				Helicopter Coordinator				
Facilities Unit	ANNA TANKERSLEY / MIKE VAUGHN (T)								
Supply Unit	JON BYERLY								
Ground Support Unit	TODD GRIFFIN / BRANDON SIEDERS				Chief	JEN KNUTSON / KEL'S MARTINEZ			
Ground Support Unit	KEVIN PALM / MIGUEL MACIAS (T)				Chief	JANET MACDONALD (T) / PAM ARBOGAST (T)			
Communications Unit	BERRY MATHIAS / DAVID MARSCH				Time Unit	KRISSE MITCHELL / KEVIN GU (T)			
ITSS	MATT MATSON / JAMES BROWN				Equipment Time	PEGGY ROBERTS / SABRINA BLASINGAME			
Food Unit	MIKE SPATZ / JOE DEPAOLA (T)				Equipment Time	JUSTIN KRIEG (T)			
Food Unit	REE ELLA VONBORSTEL				Personnel Time	KATHY HOTTLE / NANCY SHADOMY			
Security Unit	RONNIE OROPEZA				Personnel Time	DARCI DRINKWATER (T) / JOSEPH TOTTEN (T)			
Ordering Manager	DONNA DIXON / NOE REYES / MICHAEL SMITH (T)				Comp/Claims Unit	DIANNA PRIOR			
Receiving & Distribution	KARLIS LAZDA / ED JENSEN				Cost Unit	ANTHONY JOHNS			
Base Camp Manager	BEN WALKER (T)				ICPI	LEO ROBB			
9. Prepared by:	JAMES MAHAFFY			Date:	9/20/2023		Signature:	<i>Sue Puddy</i> , PSC2	



Fire Weather Forecast



FORECAST NO: 22
FORECAST FOR: Thursday Day & Night Shift
SHIFT DATE: 21 September 2023
DATE AND TIME ISSUED: 20 Sep 2023/1930

NAME OF FIRE: Umpqua Fires
UNIT: OR-UPF
SIGNED: *Jack Messick*
 Jack Messick, IMET 208-241-1046

WEATHER DISCUSSION: The low that brought the clouds and cooler temperatures will still linger over southeastern Oregon today, and slowly exit to the east overnight. This will continue light to moderate northerly wind, but skies should clear. This will allow temperatures to warm compared to Wednesday and humidity to lower. The warming and drying continues Friday with a wind shift to the northeast and east. Moderate to heavy rain continues to be possible starting Saturday night and into the first half of next week.

THURSDAY:

WEATHER: Mostly sunny. Fog possible in valleys during the morning.

	Max Temperatures	Minimum Relative Humidity
Valleys (2500-3500 ft)	64 to 72 deg F (up 10)	34 to 40 percent (down 35)
Ridges (3500-4500 ft)	60 to 66 deg F (up 14)	43 to 49 percent (down 35)

20-FOOT WINDS:

Chilcoot: Drainage 0 to 3 mph, by 1100 becoming north northwest 3 to 8 mph gusts to 14 mph. Ridge northeast 2 to 7 mph gusts to 10 mph, by 1100 becoming north northwest 5 to 11 mph gusts to 20 mph.

Grizzly: Down valley 2 to 7 mph, by 1400 becoming north northwest 7 to 13 mph gusts to 24 mph.

Brice Creek: Drainage 0 to 3 mph, by 1200 becoming north northwest 2 to 10 mph gusts to 14 mph.

Dinner/Ridge: Northeast 2 to 7 mph, by 1200 becoming north northwest 7 to 13 mph gusts to 24 mph.

AVIATION: Except for areas of morning fog, conditions should be good. 5000ft MSL afternoon temperatures 10C
CWR ($\geq 0.25''$): Zero **LAL:** 1 **HAINES:** 2 **INVERSION BREAK/MH:** 1200 hrs/ 5600ft
CAMP FORECAST: **Strader ICP:** 73F **Sharps Creek Base Camp:** 73F

THURSDAY NIGHT:

WEATHER: Clear, with patchy fog redeveloping.

	Min Temperatures	Maximum Relative Humidity
Valleys (2500-3500 ft)	34 to 42 deg F	75 percent or higher
Ridges (3500-4500 ft)	36 to 44 deg F	65 to 75 percent

20-FOOT WINDS:

Grizzly: North northeast 2 to 7 mph, by 0300 becoming east 1 to 5 mph.

Chilcoot: North 2 to 7 mph, by 2300 becoming northeast 1 to 4 mph. By 0300 becoming southeast 1 to 4 mph.

CWR ($\geq 0.25''$): Zero **LAL:** 2 **INVERSIONS:** Much shallower inversion, top around 3400ft elevation
CAMP FORECAST: **Strader ICP:** 38F **Sharps Creek Base Camp:** 38F

EXTENDED OUTLOOK: Friday: Sunny. High 66 to 76. Afternoon humidity 25 to 35 percent. Southwest wind 2 to 7 mph, shifting to northwest 2 to 6 mph in the afternoon. Increasing cloudiness Friday night with a slight chance of rain Saturday. A chance of rain Saturday night and Sunday. Rain likely Sunday night and Monday. Lows 39 to 49 Friday night, warming to 45 to 53 Sunday night. Saturday highs 64 to 76, cooling to 64 to 74 Monday. Saturday afternoon ridge wind west northwest 3 to 9 mph gusts to 14 mph. Sunday and Monday afternoon ridge wind south 2 to 8 mph gusts to 12 mph.

TAKING WEATHER OBSERVATIONS? Send to jack.messick@noaa.gov or turn in at ICP.

FIRE BEHAVIOR FORECAST

FORECAST NUMBER: 22	TYPE OF FIRE: Wildfire
FIRE NAME: Umpqua Fires	OPERATIONAL PERIOD: Day & Night shifts, September 21, 2023
DATE ISSUED: Wednesday September 20, 2023	TIME ISSUED: 19:30 Hours
UNIT: Umpqua National Forest	SIGNED: Sarah Bush – FBAN

INPUTS

WEATHER SUMMARY: See Fire Weather Forecast for Details

FUELS:

Fuels in the fire areas are primarily composed of *Timber Litter*, and *Timber Understory with moss/lichen present in most stands*. Mature conifer stands with western hemlock and Douglas fir present, generally have heavy surface fuel loading. 30 to 50+ year old second growth conifer stands contain needle litter and some down woody debris. Brush and reproduction present in areas with less dense canopies.

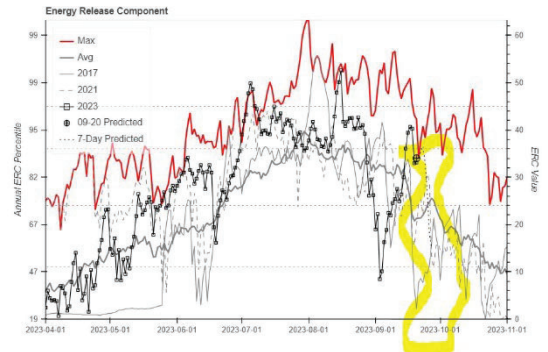
Brice, Grizzly- Forecast -ERC 84th percentile. Yesterday's obs. 1hr-22%, 10hr-21%, 100hr-13%, 1000hr-14%
 Chilcoot - Forecast -ERC 89th percentile. Yesterday's obs. 1hr-14%, **10hr-15%**, 100hr-15%, **1000hr-14%**

OUTPUTS

FIRE BEHAVIOR GENERAL:

Days are getting shorter and reducing the burn period. Conditions will be warmer and drier today. The 1000-hr fuel moisture remains constant, making them available to burn and receptive to embers. Expect lichen to be unavailable to burn with low potential for torching from the lichen as the RH will be above the critical 30% threshold.

The 1-hour fuel moistures are higher today and won't be available to burn until later in the burn period and they're in exposed stands. The 10 and 100-hr fuels in exposed stands will be available to carry fire at low rates of spread. Creeping and backing will be the most common surface fire behavior observed in areas with active burning.



FIRE BEHAVIOR SPECIFIC:

Brice, Grizzly, Chilcoot

Div J can expect up to 2' flame lengths and less than 5 ch/hr ROS where there is active fire. Fire spread potential will be largely dependent on location, aspect, and exposure/sheltering. Expect creeping and smoldering in the sheltered stands near DP 304 and along the eastern edge of fire towards DP 300. Smoldering is expected on **Div E** with less than 2' flame lengths. Expect minimal smoldering and creeping fire behavior with up to 2' flame lengths through unburned pockets of fuels on **Div A** with a limited chance of isolated torching.

Expect isolated pockets of unburned fuels to produce smoke on the Ridge and Dinner divisions. Active burning and smoke would be limited to isolated interior areas of heat on these fires today. Expect another day with backing fire and a moderate level of smoke production on **Div S/Z** as the heavy dead and down consumes. Fire continues to back towards the confluence of Champion and Grizzly Creeks on the NW perimeter of the fire. If the fire crosses Grizzly Creek to the east, wind/slope alignment would push fire ESE towards the Noon Day Road, 2212 at 6ch/hr. The area would exhibit up to 6'FL without suppression actions.

Spotting distance up to 0.2 mi, Probability of Ignition- 25% shaded and overnight; 55% unshaded

Initial Attack: In the event resources respond to a new start, recognize that fuels, topography, and conditions may be different than areas you have previously worked in.

AIR OPERATIONS: Visibility is expected to be good late in the morning through the burn period.

SAFETY

Good opportunity to review and discuss some "what if's???.....". Ensure all parties know what to do, where to go "IF" something happens.

AIR OPERATIONS SUMMARY 220	Prepared/Approved: Doug Ledgerwood	Prepared Time: 1800 hrs.
1. INCIDENT NAME: UMPQUA FIRES	2. OPERATIONAL PERIOD 09/21/2023	START TIME: 0700
		END TIME: 1900
		SUNRISE: 0659
		SUNSET: 1911

3. REMARKS (Safety Notes, Hazards, Air Operations Special Equipment, etc.):
Smoky conditions * Steep terrain * Shadow effects
 Only use approved dip sites. Do not cross contaminate water sources without sanitizing bucket/snorkel. All GPS data to be collected in DEGREES MINUTES, DECIMAL MINUTES.
 Avoid foam within 300' of waterways or bodies of water. Notify AOBD if this is not achieved
 Aircraft costs daily to: 2023.chilcoot.finance@firenet.gov and cc to 2023.chilcoot.airops@firenet.gov

4. READY ALERT AIRCRAFT:
 N234BH Yellowstone Short Haul:
 @Grants Pass.
 N38HX Teton Short Haul @
 Sunriver.

5. TFR: #3/1276 (A15) North
 Freq 121.3750
 Surface to 9000ft MSL
 Operational 1500-0400 UTC
TFR: #3/7750 (A51) South
 Freq:132.525
 Surface to 8500 MSL
 Operational 1630-0400 UTC

PERSONNEL	NAME	PHONE #	7. FREQUENCIES	AM	FM	8. FIXED-WING Avail/ Type/ Make-Model/ N#/ Base
Glide Helibase						
AOBD	Doug Ledgerwood	541-852-0633	A/A TFR and Primary North	121.3750	165.9875	AIRTANKERS: ORDER THRU ATGS
ASGS	Kevin Kozak	360-280-6714	A/G Primary (A-4) North		173.5000	ATGS – order through Roseburg Dispatch
			A/G Secondary (A-5) North			Landing Sites on Fire: See pilot map
			A/A TFR and Primary South	132.5250		Laying Cr Helispot: 43°42.698'N X 122°42.114'W 1224ft
			A/G Primary (A-6) South		167.1500	Cottage Grove S61: 43°48.246'N X 123°1.923'W 641ft
HEBM	Geoff Gillespie	760-223-0180	A/G Secondary (A-7) South		170.2625	Glide Helibase 43° 18.922' X 123° 4.415'
			Deck Tone-156.7 (TX/RX)		163.1000	Tank Dips: See Pilot Map
ORRIC	Aircraft Desk	541-957-3325				LAKE DIPS:
UAO	Jim Dotson	307-413-2024	IA A/G 49 USFS		168.0375	Gertrude LK 43°35.698'N X 122°32.452'W 3990 ft
			IA A/G 81 USFS		166.9500	Crawfish Lk 43°37.502'N X 122°42.222'W 4794 ft
			VMEB29 Tone 156.7(TX/RX)		155.3475	Crystal Lk 43°35.602 N X 122°38.655 W 4650 ft
			CTAF		122.8	Elephant Lake 43°35.742 X 122°39.237 W 5126 ft
			Air Guard Tone 110.9 (TX)		168.6250	Helibase Comm Trailer – Incident Response (E-19)

FAA N#	T Y	MAKE/ MODEL	BASE	START	AVAIL	REMARKS	FAA N#	TY	MAKE/ MODEL	BASE	START	AVAIL	REMARKS
526MW (A-10)	1	KMAX	Glide	0700	0800		32HX (A-20)	3	AS 350	Glide	0700	0800	11 personnel
N357KA (A-57)	1	KMAX	Glide	0700	0800								
N933CH(A-39)	2	Bell 205 A1	Glide	0700	0800	15 personnel	FA3AC3MM7E	3	UR-32(A-66)	Glide	0900		Joe Don Morton 907-388-1050
							NR474A	3	UR-31(A-26)	Glide	0700		Ryan Gregg 360-852-2296

HEALTH AND SAFETY MESSAGE

**Incident: Dinner, Grizzly,
Brice, Chilcoot, Ridge**

Thursday, Sept. 21, 2023

Major Hazards and Risks: 1) Snags; 2) Vehicle Travel; 3) Steep Slopes; 4) Communications

Manage your fatigue by getting plenty of rest and eating right!

Safety concerns

Snags: Lots are out there. Review the SNAG S.O.P. below. In addition, a lot of tree root systems have been exposed or fire weakened the past several of weeks. This will have weakened them, and those with a crown (limbs/needles=heavy tops) will be more prone to topple, especially if high winds develop. Snagging is ongoing, don't go into areas that have not been snagged, re-evaluate areas routinely for hazard trees. Look Up, Look Down, Look Around while you work.

Vehicle Travel: Fire roads are narrow, rock and dirt surface roads with limited turnouts. Drive Defensively, use seat belts & headlights. Manage the congestion at DP's and intersections.

Footing/Steep Slopes: Be sure of your footing, especially in areas that have had retardant, bucket drops, or rain. Take it slow on steep slopes and focus on your footing.

Communications: Please maintain good communications within crews, adjacent divisions, and with the ICP. Give clear instructions and make sure they are understood.

Personal Hygiene:

Sometimes it is hard to maintain good personal hygiene in fire camp because of lack facilities, crowded showers or we are just very tired and want some rest.

Handling food with dirty hands easily spreads bacteria. Wash your hands, or use a handy wipe, before handling food. Especially clean your hands after relieving yourself.

Try to get a shower every day and get your clothes laundered when possible. We do not adhere to the philosophy **the person that can go without a shower the longest wins.**

Poor personal hygiene can lead to gastro-intestinal disorders, rashes, jock itch, eye infections, urinary tract infections, athletes foot and many more.

The showers, wash stations, bathroom sinks, and sanitizer are provided, please use them and **STAY HEALTHY.**

SNAG S.O.P.

*Identify snags, hazard trees, and unstable rocks.

- Look Up, Look Down, Look Around

*Identify kill zone and inform others.

- Flag, describe or post lookouts to keep others out
- Consider wind and weather

*Felling of snags and hazard trees will proceed line construction and mop-up. Felling by qualified fallers only.

*Secure, eliminate or avoid unstable material on slopes. Remember, logs can roll, spin, slide or shift.

*Do not work below equipment or other firefighters. Rocks can roll, slide or bounce.

*No class B/C felling after dark

*Establish drop points, rest areas, sleeping and parking areas free of snags.

*Remain alert to noise or movement – it could signal IMMEDIATE DANGER. Face your danger to decide to escape.

Safety Officers: Risdal, Augustine, Theall, and Johnson

LOGISTICS PAGE

Strader ICP:

Email orders to 2023.chilcoot.ordering@firenet.gov

Location	373 French Creek Road Glide OR, 97443
Supply	Hours: 0600 - 2130
Ground Support	Hours: 0600 - 2130
Fuel Truck	Hours: 0630 - 2100
Weed Wash	Hours: 0700 - 2000
Meals	Hours: Breakfast – 0600 - 0930 & Dinner – 1800 - 2100
Laundry	Hours: 0500 - 2200
Showers	Hours: 0500 - 1200 & 1400-2200

Sharps Creek Base Camp:

Email orders to 2023.dinner.ordering@firenet.gov

Location	73792 Sharps Creek Road Dorena OR, 97434
Supply	Hours: 0600 - 2130
Ground Support	Hours: 0600 - 2200
Fuel Truck	Hours: 0600 - 2200
Weed Wash	Hours: 0700 - 2000
Meals	Hours: Breakfast – 0600 - 0830 & Dinner – 1700 - 2030
Laundry	Hours: 0600-0900 1800-2100 drop off at Ground Support for 24 hour return
Showers	Hours: 0600 - 1200 & 1400 - 2200

1-Mile Hose Kit for PNW Team 6

Please note this is what will be sent out with an order for a 1- mile hose kit from supply with Team 6.

NFES	QUANTITY	ISSUE	DESCRIPTION
1239	50	LG	1 1/2" Hose
1238	25	LG	1" Hose
1016	50	LG	3/4" Hose
0010	25	EA	Reducers 1 1/2" to 1"
0733	20	EA	Reducers 1" to 3/4"
0231	25	EA	1 1/2" Gated Wyes
0259	20	EA	1" Gated Wyes
0904	25	EA	3/4" Gated Wyes
0024	25	EA	Forrester Nozzles
0136	25	EA	Garden Nozzle
0738	25	EA	3/4" Shut Off
0664	2	EA	Fold a Tank 1500 gal
3870	2	EA	Mark III Kits
0606	3	EA	Can, safety
7724	3	EA	Oil, 2 stroke mix
0805	3	EA	Tags, 2 stroke
0148	2	EA	Pump, Mk III

INCIDENT RADIO COMMUNICATIONS PLAN (ICS 205)

Controlled Unclassified Information //Basic

1. Incident Name:		2. Date Prepared:		3. Operational Period:	
CHILCOOT/GRIZZLY/RIDGE/BRICE/DINNER FIRES		Date: 09/19/23		Date/Time from: 09/20/23 0700 HRS	
		Date/Time To: 09/21/23 0700 HRS			

Zone Group	Ch #	Function	Channel Name/Trunked Radio System Talk Group	Assignment	RX Freq	RX Tone/NAC	TX Freq	TX Tone/NAC	Mode (A.O. 0<M)	Remarks
	1	TACTICAL	TAC 1	DIV A / C / D / H	168.0500	167.9	168.0500	167.9	A	DIVISION ALPHA CHARLIE DELTA AND JULIET TACTICAL
	2	TACTICAL	TAC 2	DIV E and W	168.2000	167.9	168.2000	167.9	A	DIVISION ECHO AND WHISKEY TACTICAL
	3	TACTICAL	TAC 3	DIV J	168.6000	167.9	168.6000	167.9	A	DIVISION HOTEL TACTICAL
	4	TACTICAL	TAC 4	DIV S / Z	166.7250	167.9	166.7250	167.9	A	DIVISION SIERRA / ZULU TACTICAL
	5	AIR TO GROUND	A/G PRI N	AIR TO GROUND PRIMARY	165.9875	NONE	165.9875	NONE	A	AIR TO GROUND OPERATIONS, PRIMARY
	6	AIR TO GROUND	A/G SEC N	AIR TO GROUND SECONDARY	173.5000	NONE	173.5000	NONE	A	AIR TO GROUND OPERATIONS, SECONDARY
	7	COMMAND	CMD 7	COMMAND	169.7500	167.9	167.1000	167.9	A	COMMAND 7-LOCATED ON SCOTT MOUNTAIN
	8	COMMAND	CMD 8	COMMAND	173.7125	167.9	162.6000	167.9	A	COMMAND 8- LOCATED ON PIG IRON LOOKOUT
	9	COMMAND	CMD 9	COMMAND	173.6000	167.9	169.4625	167.9	A	COMMAND 9- LOCATED ON CHILCOOT MOUNTAIN
	10	COMMAND	CMD 10	COMMAND	169.8375	167.9	162.4625	167.9	A	COMMAND 10- LOCATED ON LOOKOUT MOUNTAIN
	11	COMMAND	CMD 11	COMMAND	170.0625	167.9	162.4375	167.9	A	COMMAND 11- LOCATED ON FAIRVIEW LOOKOUT
	12	TACTICAL	TAC 12	ROAD MAINTENANCE	168.2500	167.9	168.2500	167.9	A	ROAD MAINTENANCE TACTICAL
	13	AIR TO GROUND	A/G PRI S	AIR TO GROUND PRIMARY	167.1500	NONE	167.1500	NONE	A	AIR TO GROUND OPERATIONS, PRIMARY
	14	AIR TO GROUND	A/G SEC S	AIR TO GROUND SECONDARY	170.2625	NONE	170.2625	NONE	A	AIR TO GROUND OPERATIONS, SECONDARY
	15	AIR TO GROUND	MMED29	MEDICAL	155.3475	NONE	155.3475	156.7	A	MEDICAL USE ONLY
	16	AIR GUARD	AIR GUARD	ALL DIVS	168.6250	NONE	168.6250	110.9	A	EMERGENCY USE ONLY

5. Special Instructions:

6. Prepared By (Communications Unit Leader) Name: Berry Mathias
 Signature: *Berry Mathias*
 Date/Time: 09/20/23 12:30 HRS

Communications staffed 0600-2200 hours. Phone: (949) 648-1591
IAP Page

Finance Email:

- 2023.dinner.finance@firenet.gov
- 2023.chilcoot.finance@firenet.gov

FINANCE CHECK IN:

- 2023.dinner.finance@firenet.gov
- 2023.chilcoot.finance@firenet.gov



Finance can be reached at:

Contractors: 971-713-0374; Overhead: 971-727-5250

COMP/CLAIMS – 971-245-0248

Agency Overhead	Agency AD's / EFF's	Agency Crews	Contract Crews / Equipment	Cooperators
Resource Orders (RO)	Resource Orders (RO)	Resource Orders (RO)	Resource Orders (RO)	Resource Orders (RO)
Signed CTR	Casual Hire Form Signed CTR	Manifest Signed CTR	Manifest Agreement Inspections Signed Shift Ticket / CTR	Agreement Signed Shift Ticket / CTR

Tip on a Complete CTR / Shift Ticket:

- Resource Order Number
- Correct dates and work time
- Total hours added for each day
- Signed by Division or above (Include O-# by signed official)
- Justification are required for all:
 - Hazard Pay – Hazard for fighting uncontrolled fire on fireline.
 - Excessive shifts (Example: air travel to incident, burnout operations, initial attack)
 - No meal break shown

NOTE: ON THE TOP OF YOUR CTR OR SHIFT TICKET, PLEASE INDICATE THE FIRE YOU WERE ORDERED ON. ADD IN REMARKS SECTION ON CTR OR SHIFT TICKET, THE "FIRE NAME" THAT YOU WORKED ON.



Do you or the public need to reach the PIOs?

Phone: (541) 900-5862

Emails:

Brice Creek/Dinner/Grizzly: 2023.dinner@firenet.gov

Chilcoot/Ridge: 2023.chilcoot@firenet.gov

Please email us your photos! (And don't forget your PPE 😊)



Chilcoot Fire Information



Brice and Grizzly Fires Information

Scan the codes above to access links to each of the official sources of information on all five of the Umpqua Fires—from InciWeb to Facebook to email addresses, it's all there!



Mail: Expecting mail that hasn't arrived yet? Please swing by the Strader or Sharps PIO shop and provide us with forwarding instructions prior to demob.

Where to send your mail?

Strader and Sharps Creek resources should have all mail sent to the North Umpqua Ranger District

Address your mail to:

C/O (Chilcoot Fire, Your Name, Crew/RO Number, Phone Number)
North Umpqua Ranger District
18782 North Umpqua Highway
Glide, OR 97443

Strader Pickup:

PIOs are checking mail daily; come visit our PIO trailer to get your items!

If you have **already had mail shipped to the Dorena Post Office, pick up notes are as follows:**

- Persons picking up the mail must present ID for their mail.
- Business hours:
 - 9 AM- 1 PM Monday -Friday
 - 11 AM- 12 PM Saturday
 - Closed Sunday

Please do **not have additional mail sent to the Dorena Post Office; send to Umpqua Ranger District**



**Call or visit us if you've lost something!
We have PIO shops at Strader and Sharps Creek.**



Human Resource Message

Umpqua Fires September 21, 2023

Humility

humility

noun

US

/hju: 'mɪl.ə.ti/

the quality of not being proud because you are aware of your bad qualities:

Three Key Actions of Humility

- Recognizing your own shortcomings and limitations.
- Appreciating others' strengths, giving credit where it's due, and highlighting the team's success over your individual achievements.
- Showing openness to learning from others.

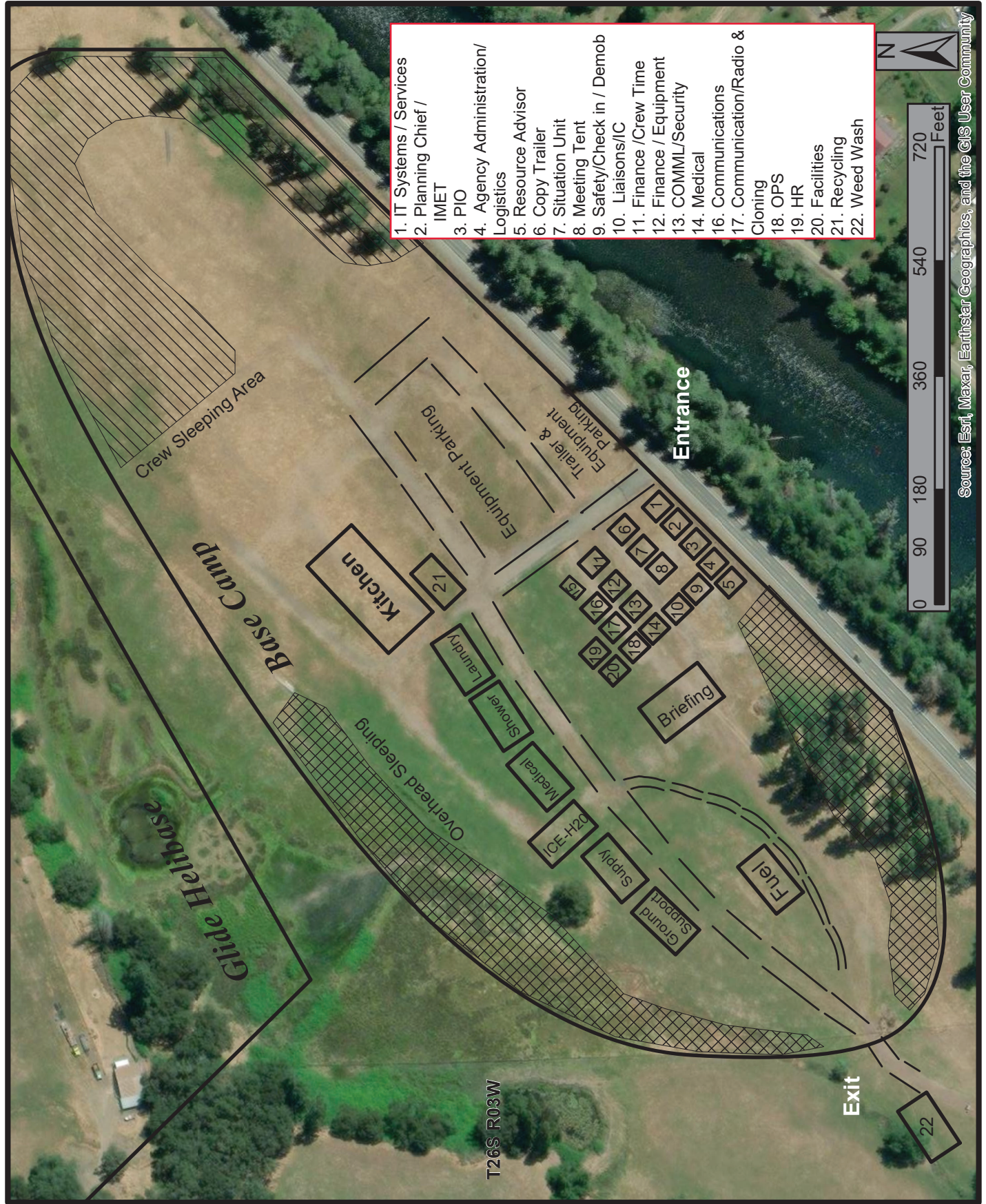
You can reach me by text or phone call at 503-575-8547. You can visit me in my yurt on the SW side of camp.

Have a safe shift and have a great day!

503-575-8547

Audrey Matsumonji
Human Resource Specialist

Chilcoot ICP Basecamp Map



1. IT Systems / Services
2. Planning Chief / IMET
3. PIO
4. Agency Administration/ Logistics
5. Resource Advisor
6. Copy Trailer
7. Situation Unit
8. Meeting Tent
9. Safety/Check in / Demob
10. Liaisons/IC
11. Finance /Crew Time
12. Finance / Equipment
13. COMML/Security
14. Medical
16. Communications
17. Communication/Radio & Cloning
18. OPS
19. HR
20. Facilities
21. Recycling
22. Weed Wash

Source: Esri, Maxar, Earthstar Geographics, and the GIS User Community

Extensions and Crew Swaps – NW 6

This is the Team Standard Operating procedure based on national policy

- **Resources may be demobed, regardless of crew status, if it is no longer needed.**
- Contract Crews are generally not extended unless replacement resources are scarce. Crews may swap crew members if needed by utilizing the crew swap form at the QR code below.
- Resources ordered on 'O' numbers cannot swap crew members (exception - some medical resources). These resources can extend depending on availability and needs of the incident. See Plans for a resource extension form.

Contracted Fireline Equipment Crew Swap Procedure

- Contract equipment may stay on the incident until it is no longer needed, a maximum dollar amount is reached, or replacement crew members cannot be provided.
- It is the responsibility of the contract owner to track their crew members and ensure they maintain proper work/rest ratios. The IMT assumes contracted equipment will swap crew members as needed to provide adequate rest for their employees.
- Non-fireline equipment personnel (like hand wash stations) are not tracked other than a current onsite contact.
- If replacement crew members cannot be provided, this must be documented on an ICS-213 and provided to Operations and Plans at least 72 hours prior to the 14th workday. The resource will be demobed after 14 shifts OR an extension form may be completed based on operational need, see Plans for this form.
- Crew swaps **MUST** be tracked through the below QR code form as soon as known, **no later than 1800** on the day prior to the swap. If the new crew member is the primary operator and any information in the IAP is incorrect, correct information **MUST** be provided to the Division Supervisor immediately following the operational briefing/division breakout.
- We prefer all members of a resource swap at once if possible. The crew swap form will need to be filled out for **each individual crew member**.
- Replacement workers must provide proof of current annual training upon request.
- The IMT will NOT track a last workday for these resources in the IAP unless:
 - It was determined to be excess to the needs of the incident and will demob
 - A resource was unable to provide replacement workers and will demob

QR code link to Umpqua Fires FTP page, then find button named **Crew Swap Form**



Please contact Plans after the briefing, at their office at either camp, or at Check-in if you have questions or wish to understand how your last workday/demob date was determined.



CHECK-IN PROCESS - ALL RESOURCES

**Grizzly (OR-UPF-000341) Dinner (OR-UPF-000357) Brice Creek (OR-UPF-000359)
Chilcoot (OR-UPF-000345) Ridge (OR-UPF-000346)**

STEP 1. Scan the QR code to fill out and submit the online check-in form.

- Have your resource order ready as many questions reference it.



STEP 2. Email your MANIFEST (if appropriate) depending on what incident you are assigned to. Include your request number in the subject line (e.g, E-118, O-48).

- If you are assigned to the Grizzly, Dinner or Brice Creek incidents, email to 2023.dinner.checkin@firenet.gov
- If you are assigned to the Chilcoot or Ridge incidents, email to 2023.chilcoot.checkin@firenet.gov

STEP 3. See Finance page of IAP for further instructions on how to check in with finance.

STEP 4. Complete vehicle inspection as instructed in your resource order, including contract inspection as needed.

If you have any issues, please contact Check-in at (208) 891-6286 or by email at 2023.chilcoot.checkin@firenet.gov or 2023.dinner.checkin@firenet.gov

Umpqua Fires

Demob Check-Out Form

Pick up Demob Check-Out form at BRIEFING (IAP) or in PLANS to begin process

RO # _____ Resource Name _____ Fire: _____ Date: _____

Initial

Follow these steps in the order below:

- _____ 1. **Weed Wash** – ALL line resources that went off-road will need to go through a Weed Wash in your specific fire location. **If not needed, proceed to step 2.**
- _____ 2. **Ground support** – Contractors must stop to sign their release inspection. The inspection is optional for agency resources. **Agency resources proceed to step 3.**
- _____ 3. **Supply** – Return any items you checked out. All units must have an initial from SUPPLY confirming all equipment has been returned.
- _____ 4. **Communications** – Return any items you checked out. All units must have an initial from COMMUNICATIONS confirming all radio equipment has been returned.
- _____ 5. **Finance** – Proceed to finance to receive your final timesheet. Having ALL your times turned in and up to date will GREATLY speed up the process.
- _____ 6. **Demob – Final step.** Return completed Demob Check-Out form and any Documentation to Demob/Check-in. Documentation can also be emailed to 2023.chilcoot.docs@firenet.gov. Let Demob know your estimated time of departure, arrival time and destination. You will not be released from the incident with Dispatch until this is completed.

ALL AIR TRAVELERS

Submit your air request 72 hours prior to flight date through the QR code on the IAP Cover. Call 208-891-6286 for any questions or assistance.

NIGHT SHIFT PERSONNEL

All night shift personnel coming off the line will be required to meet work/rest requirements before completing the Demob process.

Demob List for Thursday 09/21/2023

DINNER – BRICE CREEK - GRIZZLY FIRES				
E-8	0730	CHP2	DARRELL GREEN	GRIZZLY
E-10000	0800	DOZ2	R & L	GRIZZLY
O-240.53	0800	PIO2	ANDERSON, JOE	CHILCOOT
CHILCOOT - RIDGE FIRES				
E-10016	0800	CHP2	TORRES CONTRACTING	CHILCOOT
E-10017	0830	CHP2	TORRES CONTRACTING	CHILCOOT
A-19	0700	HEL2	HES2-N377PA	CHILCOOT
O-232	0800	SECM	DEANE, PETER	CHILCOOT
O-10003	0830	INBA	MILLER, JILL	CHILCOOT
O-233	2000	REAF	SJODEN, DANE	CHILCOOT

Demob List for Friday 09/22/2023

DINNER – BRICE CREEK - GRIZZLY FIRES				
C-10000	0800	CRWC	WESTVIEW FORESTRY	DINNER
C-10001	0830	CRWC	NORTH PACIFIC	DINNER
E-42	0700	ENG4	METHOW VALLEY	DINNER
S-271	0900	SSEC	WILDLAND SECURITY	DINNER
CHILCOOT - RIDGE FIRES				
E-190	0730	ENG4	J3 CONTRACTING	CHILCOOT
O-72	0700	RES	REMS BACKCOUNTRY	CHILCOOT
O-238	0815	HEQB	MCGRATH, CHRIS	CHILCOOT
O-141	1800	BCMG	JENSEN, EDWARD	CHILCOOT
O-240.8	1700	OPBD	NUTLEY, TIM	CHILCOOT
O-235	1800	SEC2	HAMMOND, ANDREW	CHILCOOT

Demob List for Saturday 09/23/2023

DINNER – BRICE CREEK - GRIZZLY FIRES				
E-2	0700	WTS2	RHY-DEM	BRICE
E-18	0730	WTS2	IRELAND BROTHERS	BRICE
O-126	1100	SEC2	DUGGAN, ROBERT	DINNER
O-129	2000	REAF	HANCOCK, JEDIDIAH	DINNER
CHILCOOT – RIDGE FIRES				
E-137	0700	WTS2	ON THE GO H20	CHILCOOT
E-138	0715	WTS2	COWBOY FIRE	CHILCOOT
E-200	0730	WTS2	M & M	CHILCOOT
E-206	0745	WTS2	S5 LAND SERVICES	CHILCOOT
E-175	0800	AMB2	BEST PRACTICE	CHILCOOT
E-180	0815	STK2	AIKENS, JAMES	CHILCOOT
E-188	0830	ENG4	ORUPF E424	CHILCOOT
O-251	0700	SPUL	BYERLY, JON	CHILCOOT
O-293	0730	PIO3	JOHNSON, AMANDA	CHILCOOT
O-142	1800	REAF	DODD, BRADY	CHILCOOT
O-230	1800	RCDM	LAZDA, KARLIS	CHILCOOT

Demob List for Sunday 09/24/2023

DINNER – BRICE CREEK - GRIZZLY FIRES				
C-17	0700	CR2I	VALE SRV #12	BRICE
C-18	0700	CR2I	CENTRAL OREGON #5	BRICE
CHILCOOT - RIDGE FIRES				
C-47	0700	CR2I	SRV #10	CHILCOOT
C-46	0800	CRWC	WARM SPRINGS #2	CHILCOOT
E-177	0800	DZR2	PARKHURST	CHILCOOT
E-189	0830	ENG4	DIAMOND FIRE	CHILCOOT
O-327	0730	TFLD	O'SHELL, LOGAN	CHILCOOT
O-246	0800	MEDL	BELINO, LAURA	CHILCOOT
O-142	1800	REAF	DODD, BRADY	CHILCOOT
O-244	1800	WFA2	TYREE, JIMMY	CHILCOOT

Demob List for Monday 09/25/2023

DINNER – BRICE CREEK - GRIZZLY FIRES				
NO RESOURCES SCHEDULED TO DEMOB				
CHILCOOT - RIDGE FIRES				
C-51	0700	CRW2	JC OROZCO	CHILCOOT
E-183	0700	ENG6	TIMBER TIPPER	CHILCOOT
E-184	0715	ENG6	DIAMOND FIRE	CHILCOOT
E-185	0730	ENG6	GREYBACK	CHILCOOT
E-186	0745	ENG6	FENIX FORESTRY	CHILCOOT
E-187	0800	ENG6	FRANCO	CHILCOOT
E-188	0815	ENG4	OR-UPF	CHILCOOT
O-174	0730	EMPF	GIFFORD, GREGGORY	CHILCOOT
O-234	0745	REAF	MILLS, NATALIE	CHILCOOT
O-241	0800	SEC1	HUMPHREY, CHARLES	CHILCOOT

Division/Group Assignment List (ICS 204 WF)
Controlled Unclassified Information//Basic

1. Incident Name:				3.		
UMPQUA FIRES				Branch:	Division/Group	
2. Operational Period: DAY						
Date/Time From: 09/21/2023 0700 THU		Date/Time To: 09/21/2023 1900 THU		BRICE CREEK A(C/D)		
4. Operations Personnel						
OPERATIONS CHIEF		DAN MARTIN LARAE GUILLORY (T)		BRANCH DIRECTOR		
SAFETY OFFICERS		ERIC RISDAL SHANE THEALL		DIVISION/GROUP SUPERVISOR DOUG CATES		
5. Resources Assigned this Period						
Strike Team / Task Force / Resource Designator	LWD	Leader	Number Persons	Drop Off PT./Time	Pick Up PT./Time	
O-240.32 SOF2	09/26	AL AUGUSTINE	1	SHARPS CREEK BASE CAMP/0700	SHARPS CREEK BASE CAMP/1900	
O-16 TFLD (T)	09/30	BRIAN WHETSLER	1	SHARPS CREEK BASE CAMP/0700	SHARPS CREEK BASE CAMP/1900	
O-240.69 TFLD (T)	09/25	MICHEAL DAKE	1	SHARPS CREEK BASE CAMP/0700	SHARPS CREEK BASE CAMP/1900	
C-17 CR2I VALE SRV #12	09/23	JULIAN JACOBO	24	SHARPS CREEK BASE CAMP/0700	SHARPS CREEK BASE CAMP/1900	
C-18 CR2I CENTRAL OREGON #05	09/23	NICHOLAS FOEY	20	SHARPS CREEK BASE CAMP/0700	SHARPS CREEK BASE CAMP/1900	
C-55 CRW2 IRON MOUNTAIN	09/29	FRANSCISCO CISNEROS	20	SHARPS CREEK BASE CAMP/0700	SHARPS CREEK BASE CAMP/1900	
E-42 ENG4 METHOW RIVER	09/21	CINDY GAMEROS	3	SHARPS CREEK BASE CAMP /0700	SHARPS CREEK BASE CAMP /1900	
E-25 ENG6 NORTH PACIFIC	09/29	PORFIRIO SERVIN	3	SHARPS CREEP BASE CAMP/0700	SHARPS CREEP BASE CAMP/1900	
E-26 ENG6 FIRST STRIKE	09/28	HOLDEN HILLIKER	3	SHARPS CREEK BASE CAMP/0700	SHARPS CREEK BASE CAMP/1900	
E-194 ENG6 DIAMOND FIRE	09/29	DANIEL EMEL	3	SHARPS CREEK BASE CAMP/0700	SHARPS CREEK BASE CAMP/1900	
E-18 WTS2 IRELAND BROTHERS	09/22	ADAM FRASER	1	SHARPS CREEK BASE CAMP/0700	SHARPS CREEK BASE CAMP/1900	
O-18 FMOD TOMS TIMBER	10/03	TOM CONWAY	2	SHARPS CREEK BASE CAMP/0700	SHARPS CREEK BASE CAMP/1900	
E-1 VUTV TOP GUN				SHARPS CREEK BASE CAMP/0700	SHARPS CREEK BASE CAMP/1900	
E-16 VUTV TOP GUN				SHARPS CREEK BASE CAMP/0700	SHARPS CREEK BASE CAMP/1900	
8. Division/Group Communication Summary						
Function	Channel	RX Frequency N/W	RX Tone/NAC	TX Frequency N/W	TX Tone/NAC	Mode
TACTICAL	TAC 1	168.0500	167.9	168.0500	167.9	A
COMMAND	CMD 11	170.0625	167.9	162.4375	167.9	A
AIR TO GROUND	A/G PRI N	165.9875		165.9875		A
AIR TO GROUND	A/G SEC N	173.5000		173.5000		A
AIR GUARD	AIR GUARD	168.6250		168.6250	110.9	A
9. Prepared By (Resource Unit Leader)		Approved By (Planning Section Chief)		Date	Time	
JAMES MAHAFFY RESL (T)		KRISANN KOSEL		09/20/2023	2200	

Division/Group Assignment List (ICS 204 WF)
Controlled Unclassified Information//Basic

1. Incident Name:			3.			
UMPQUA FIRES			Branch:		Division/Group	
2. Operational Period: DAY			BRICE CREEK A(C/D)			
Date/Time From: 09/21/2023 0700 THU		Date/Time To: 09/21/2023 1900 THU				
4. Operations Personnel						
OPERATIONS CHIEF		DAN MARTIN LARAE GUILLORY (T)		BRANCH DIRECTOR		
SAFETY OFFICERS		ERIC RISDAL SHANE THEALL		DIVISION/GROUP SUPERVISOR		DOUG CATES
5. Resources Assigned this Period						
Strike Team / Task Force / Resource Designator		LWD	Leader	Number Persons	Drop Off PT./Time	Pick Up PT./Time
O-129 REAF		09/23	JEDIDIAH HANCOCK	1	SHARPS CREEK BASE CAMP/0700	SHARPS CREEK BASE CAMP/1900
O-29 REMS BEYOND THE EDGE (REMS 1)		09/26	JOE DECKER	4	SHARPS CREEK BASE CAMP/0700	SHARPS CREEK BASE CAMP/1900
E-64 AMB2 ROUGH COUNTRY (AMB 5)		10/01	JESSIE EVANS	2	SHARPS CREEK BASE CAMP/0700	SHARPS CREEK BASE CAMP/1900
6. Control Operations/Work Assignments:						
<p>TASK: Continue to hold, secure, and mop-up control lines. Monitor conditions in preparation to implement firing plan in direct areas. Utilize aircraft as necessary to moderate fire behavior. Snag along open roads.</p> <p>PURPOSE: Prevent fire from impacting values at risk, including communities to the west, commercial timberlands and T&E habitat. Provide for firefighter and public safety.</p> <p>END STATE: Fire is kept north of 22 RD, south of the 2216 RD, and east of the 732 RD to protect the values at risk through the remainder of the fire season.</p>						
7. Special Instructions:						
<ul style="list-style-type: none"> Resources assigned to Division A/C will add BRICE CREEK FIRE to all CTR and SHIFT TICKETS, OR-UPF-000359 P6QLJ4. Resources assigned to Division D need to add DINNER FIRE OR-UPF-000357 P6QLJ7 (0615) to your CTR's and SHIFT TICKETS. Ensure signage is adequate at all drop points. Add signage to all major intersections to help with locating drop points. Mop-up and secure edges of two unburned pockets H-19 and H-161 are the nearest helispots for Division A/C. H-41 is the closest helispot for the Division D. 						
8. Division/Group Communication Summary						
Function	Channel	RX Frequency N/W	RX Tone/NAC	TX Frequency N/W	TX Tone/NAC	Mode
TACTICAL	TAC 1	168.0500	167.9	168.0500	167.9	A
COMMAND	CMD 11	170.0625	167.9	162.4375	167.9	A
AIR TO GROUND	A/G PRI N	165.9875		165.9875		A
AIR TO GROUND	A/G SEC N	173.5000		173.5000		A
AIR GUARD	AIR GUARD	168.6250		168.6250	110.9	A
9. Prepared By (Resource Unit Leader)			Approved By (Planning Section Chief)		Date	Time
JAMES MAHAFFY RESL (T)			KRISANN KOSEL		09/20/2023	2200

Division/Group Assignment List (ICS 204 WF)
Controlled Unclassified Information//Basic

1. Incident Name:				3.		
UMPQUA FIRES				Branch:	Division/Group	
2. Operational Period: DAY						
Date/Time From: 09/21/2023 0700 THU		Date/Time To: 09/21/2023 1900 THU		GRIZZLY S/Z		
4. Operations Personnel						
OPERATIONS CHIEF		DAN MARTIN LARAE GUILLORY (T)		BRANCH DIRECTOR		
SAFETY OFFICERS		ERIC RISDAL SHANE THEALL		DIVISION/GROUP SUPERVISOR RORY HIETT		
5. Resources Assigned this Period						
Strike Team / Task Force / Resource Designator	LWD	Leader	Number Persons	Drop Off PT./Time	Pick Up PT./Time	
O-240.32 SOF2	09/26	AL AUGUSTINE	1	SHARPS CREEK BASE CAMP/0700	SHARPS CREEK BASE CAMP/1900	
O-265 SOFR	09/26	MICHAEL JOHNSON	1	SHARPS CREEK BASE CAMP/0700	SHARPS CREEK BASE CAMP/1900	
O-240.38 TFLD	09/26	LOGAN LAWSON	1	SHARPS CREEK BASE CAMP/0700	SHARPS CREEK BASE CAMP/1900	
C-9.3 FELB	09/30	TRAVIS PUTNEY	1	SHARPS CREEK BASE CAMP/0700	SHARPS CREEK BASE CAMP/1900	
C-9 CRW1 UNION	09/30	ERIC JORGENSEN	20	SHARPS CREEK BASE CAMP/0700	SHARPS CREEK BASE CAMP/1900	
C-10 CRW1 BAKER RIVER	09/29	SHAWN OTTO	22	SHARPS CREEK BASE CAMP/0700	SHARPS CREEK BASE CAMP/1900	
C-11 CR21 HIGHLANDS	09/30	SETH SCHERTENLEID	21	SHARPS CREEK BASE CAMP/0700	SHARPS CREEK BASE CAMP/1900	
E-2 WTS2 RHY-DEM	09/22	RUSSEL ROBINSON	1	SHARPS CREEK BASE CAMP/0700	SHARPS CREEK BASE CAMP/1900	
E-7 WTS3 PACIFIC RIDGELINE	10/04	ZACH JAFARZADEH	1	SHARPS CREEK BASE CAMP/0700	SHARPS CREEK BASE CAMP/1900	
E-157 SKG2 MICHAEL SUTCH	09/30	NATHAN ARROWOOD	1	SHARPS CREEK BASE CAMP/0700	SHARPS CREEK BASE CAMP/1900	
E-24 DZR2 TOUGH EQUIPMENT	09/25	ROBERT ASCHERIN	2			
E-13 VUTV KD OUTDOORS LLC				SHARPS CREEK BASE CAMP/0700	SHARPS CREEK BASE CAMP/1900	
E-84 VUTV KWIK RESPONSE				SHARPS CREEK BASE CAMP/0700	SHARPS CREEK BASE CAMP/1900	
E-90 VUTV TOP GUN				SHARPS CREEK BASE CAMP/0700	SHARPS CREEK BASE CAMP/1900	
O-15 FMOD B&M	09/29	NICK BROWNING	2	SHARPS CREEK BASE CAMP/0700	SHARPS CREEK BASE CAMP/1900	
8. Division/Group Communication Summary						
Function	Channel	RX Frequency N/W	RX Tone/NAC	TX Frequency N/W	TX Tone/NAC	Mode
TACTICAL	TAC 4	166.7250	167.9	166.7250	167.9	A
COMMAND	CMD 11	170.0625	167.9	162.4375	167.9	A
AIR TO GROUND	A/G PRI N	165.9875		165.9875		A
AIR TO GROUND	A/G SEC N	173.5000		173.5000		A
AIR GUARD	AIR GUARD	168.6250		168.6250	110.9	A
9. Prepared By (Resource Unit Leader)		Approved By (Planning Section Chief)		Date	Time	
JAMES MAHAFFY RESL (T)		KRISANN KOSEL		09/20/2023	2200	

Division/Group Assignment List (ICS 204 WF)
Controlled Unclassified Information//Basic

1. Incident Name:			3.			
UMPQUA FIRES			Branch:		Division/Group	
2. Operational Period: DAY			GRIZZLY SIZ			
Date/Time From: 09/21/2023 0700 THU		Date/Time To: 09/21/2023 1900 THU				
4. Operations Personnel						
OPERATIONS CHIEF		DAN MARTIN LARAE GUILLORY (T)		BRANCH DIRECTOR		
SAFETY OFFICERS		ERIC RISDAL SHANE THEALL		DIVISION/GROUP SUPERVISOR		RORY HIETT
5. Resources Assigned this Period						
Strike Team / Task Force / Resource Designator		LWD	Leader	Number Persons	Drop Off PT./Time	Pick Up PT./Time
O-129 REAF		09/23	JEDIDIAH HANCOCK	1	SHARPS CREEK BASECAMP/0700	SHARPS CREEK BASECAMP/1900
O-15 REMS REMOTE ACCESS (REMS 3)		10/01	NOLAN HOWELL	4	SHARPS CREEK BASE CAMP/0700	SHARPS CREEK BASE CAMP/1900
O-133 EMPF ADVENTURE MEDICS (MEDIC NELSON)		09/29	RUTH NELSON	1	SHARPS CREEK BASE CAMP/0700	SHARPS CREEK BASE CAMP/1900
6. Control Operations/Work Assignments:						
<p>TASK: Take action on the Grizzly fire using Champion Creek RD to prevent fire spread to the west.</p> <p>PURPOSE: Prevent fire from impacting values at risk, including private residences, communities to the west, historic mining community and infrastructure and commercial timberlands.</p> <p>END STATE: Fire is kept north and west of the 2212 RD, east of the 2473 RD and south of 22 RD, to protect the values at risk through the remainder of fire season. Structures are prepped and secured.</p>						
7. Special Instructions:						
<ul style="list-style-type: none"> All resources assigned to this division need to add Grizzly Fire OR-UPF-000341 P6QL0W (0615) to your CTR's and shift tickets. H-191 is the nearest helispot for Division S/W. 						
8. Division/Group Communication Summary						
Function	Channel	RX Frequency N/W	RX Tone/NAC	TX Frequency N/W	TX Tone/NAC	Mode
TACTICAL	TAC 4	166.7250	167.9	166.7250	167.9	A
COMMAND	CMD 11	170.0625	167.9	162.4375	167.9	A
AIR TO GROUND	A/G PRI N	165.9875		165.9875		A
AIR TO GROUND	A/G SEC N	173.5000		173.5000		A
AIR GUARD	AIR GUARD	168.6250		168.6250	110.9	A
9. Prepared By (Resource Unit Leader)			Approved By (Planning Section Chief)		Date	Time
JAMES MAHAFFY RESL (T)			KRISANN KOSEL		09/20/2023	2200

Division/Group Assignment List (ICS 204 WF)
Controlled Unclassified Information//Basic

1. Incident Name:			3.			
UMPQUA FIRES			Branch:		Division/Group	
2. Operational Period: DAY			GRIZZLY NIGHT			
Date/Time From: 09/21/2023 0700 THU		Date/Time To: 09/21/2023 1900 THU				
4. Operations Personnel						
SAFETY OFFICERS				OPERATIONS CHIEF DAN MARTIN LARAE GUILLORY (T)		
BRANCH DIRECTOR				DIVISION/GROUP SUPERVISOR		
5. Resources Assigned this Period						
Strike Team / Task Force / Resource Designator		LWD	Leader	Number Persons	Drop Off PT./Time	Pick Up PT./Time
O-11 WFM WARM SPRINGS		09/29	JOSHUA SOHAPPY	7	SHARPS CREEK BASE CAMP/1900	SHARPS CREEK BASE CAMP/0700
E-63 AMB2 WILDERNESS MEDICS (AMBO 4)		09/26	MATT ROTH	2	SHARPS CREEK BASE CAMP/1900	SHARPS CREEK BASE CAMP/0700
6. Control Operations/Work Assignments:						
<p>TASK: Assess need to take action on the Grizzly fire using pre-identified actions as defined in the management action points.</p> <p>PURCHASE: Prevent fire from impacting values at risk, including private residences, communities to the west, historic mining community and infrastructure and commercial timberlands.</p> <p>END STATE: Fire is kept east of Channel Creek, to protect the values at risk through the remainder of fire season. Structures are prepped and secured.</p>						
7. Special Instructions:						
<ul style="list-style-type: none"> All resources assigned to this division need to add Grizzly Fire OR-UPF-000341 P6QL0W (0615) to your CTR's and shift tickets. H-191 is the nearest helispot for Division S/Z. 						
8. Division/Group Communication Summary						
Function	Channel	RX Frequency N/W	RX Tone/NAC	TX Frequency N/W	TX Tone/NAC	Mode
TACTICAL	TAC 4	166.7250	167.9	166.7250	167.9	A
COMMAND	CMD 11	170.0625	167.9	162.4375	167.9	A
AIR TO GROUND	A/G PRI N	165.9875		165.9875		A
AIR TO GROUND	A/G SEC N	173.5000		173.5000		A
AIR GUARD	AIR GUARD	168.6250		168.6250	110.9	A
9. Prepared By (Resource Unit Leader)			Approved By (Planning Section Chief)		Date	Time
JAMES MAHAFFY			KRISANN KOSEL		09/20/2023	2200

Division/Group Assignment List (ICS 204 WF)
Controlled Unclassified Information//Basic

1. Incident Name:			3.			
UMPQUA FIRES			Branch:		Division/Group	
2. Operational Period: 0700 - 1900					CHILCOOT E/W	
Date/Time From: 09/21/2023 0700 THU	Date/Time To: 09/21/2023 1900 THU					
4. Operations Personnel						
OPERATIONS CHIEF		DAN MARTIN LARAE GUILLORY (T)		SAFETY OFFICERS		ERIC RISDAL SHANE THEALL
BRANCH DIRECTOR				DIVISION/GROUP SUPERVISOR		NICK PETERS
5. Resources Assigned this Period						
Strike Team / Task Force / Resource Designator		LWD	Leader	Number Persons	Drop Off PT./Time	Pick Up PT./Time
O-314 TFLD		09/28	TOM SCHOENFELDER	1	STRADER ICP/0700	STRADER ICP/1900
O-319 TFLD		10/02	TODD MIRANDA	1	STRADER ICP/0700	STRADER ICP/1900
O-240.71 TFLD (T)		09/25	MEGAN HURRELL	1	STRADER ICP/0700	STRADER ICP/1900
O-14 HEQB		09/29	ETHAN REDDIC	1	STRADER ICP/0700	STRADER ICP/1900
C-47 CR2I SRV #10		09/23	ANDRES HERNADEZ	25	STRADER ICP/0700	STRADER ICP/1900
C-50 CRW2 GFP		09/25	JESSE SZABO	20	STRADER ICP/0700	STRADER ICP/1900
C-51 CRW2 OROZCO		09/24	CHRIS OROZCO	20	STRADER ICP/0700	STRADER ICP/1900
E-4 ENG4 TORRES 5		10/02	HARLEY MEAD	3	STRADER ICP/0700	STRADER ICP/1900
E-188 ENG4 ORUPF E424		09/22	JEFF CASE	5	STRADER ICP/0700	STRADER ICP/1900
E-183 ENG6 TIMBER TIPPER		09/24	KEITH REID	3	STRADER ICP/0700	STRADER ICP/1900
E-185 ENG6 GRAYBACK E25		09/24	ARIC PAUL	3	STRADER ICP/0700	STRADER ICP/1900
E-186 ENG6 FENIX		09/24	SUZANNE FLYNN	3	STRADER ICP/0700	STRADER ICP/1900
E-112 WTT1 HYDROTACTICAL		09/26	DANIEL WARNER	2	STRADER ICP/0700	STRADER ICP/1900
E-178 WTS2 SIMONS		10/02	MATTHEW HOLMES	1	STRADER ICP/0700	STRADER ICP/1900
E-177 DZR2 PARKHURST		09/23	KRAIG CERMAK	2	STRADER ICP/0700	STRADER ICP/1900
8. Division/Group Communication Summary						
Function	Channel	RX Frequency N/W	RX Tone/NAC	TX Frequency N/W	TX Tone/NAC	Mode
TACTICAL	TAC 2	168.2000	167.9	168.2000	167.9	A
COMMAND	CMD 9	173.6000	167.9	169.4625	167.9	A
COMMAND	CMD 10	169.8375	167.9	162.4625	167.9	A
AIR TO GROUND	A/G PRI S	167.1500		167.1500		A
AIR TO GROUND	A/G SEC S	170.2625		170.2625		A
AIR GUARD	AIR GUARD	168.6250		168.6250	110.9	A
9. Prepared By (Resource Unit Leader)			Approved By (Planning Section Chief)		Date	Time
STEPHANIE FALCON			KRISANN KOSEL		09/20/2023	2200

Division/Group Assignment List (ICS 204 WF)
Controlled Unclassified Information//Basic

1. Incident Name:				3.		
UMPQUA FIRES				Branch:	Division/Group	
2. Operational Period: 0700 - 1900						
Date/Time From: 09/21/2023 0700 THU		Date/Time To: 09/21/2023 1900 THU		CHILCOOT E/W		
4. Operations Personnel						
OPERATIONS CHIEF		DAN MARTIN LARAE GUILLORY (T)		SAFETY OFFICERS		
				ERIC RISDAL SHANE THEALL		
BRANCH DIRECTOR				DIVISION/GROUP SUPERVISOR		
				NICK PETERS		
5. Resources Assigned this Period						
Strike Team / Task Force / Resource Designator		LWD	Leader	Number Persons	Drop Off PT./Time	Pick Up PT./Time
E-137 WTS2 ON THE GO H2O		09/22	TIM SCHMIDT	1	STRADER ICP/0700	STRADER ICP/1900
E-138 WTS2 COWBOY FIRE		09/22	MALIKI PARKER	1	STRADER ICP/0700	STRADER ICP/1900
E-200 WTS2 M & M		09/22	MARK CSERNAK	1	STRADER ICP/0700	STRADER ICP/1900
E-114 EXC2 SCOTT MARSHALL		09/25	SCOTT MARSHALL	2	STRADER ICP/0700	STRADER ICP/1900
E-6 GRD1 MARK JONES		09/26	JESS CALVERT	2	STRADER ICP/0700	STRADER ICP/1900
E-12 VROL MARK JONES		10/03	RILEY LOONEY	1	STRADER ICP/0700	STRADER ICP/1900
O-142 REAF		09/24	BRADY DODD	1	STRADER ICP/0700	STRADER ICP/1900
O-143 REAF		09/21	MADELYN HOUSTON	1	STRADER ICP/0700	STRADER ICP/1900
O-233 REAF		09/21	DANE SJODEN	1	STRADER ICP/0700	STRADER ICP/1900
O-238 REAF		09/21	CHRIS MCGRATH	1	STRADER ICP/0700	STRADER ICP/1900
O-72 REMS BACKCOUNTRY RESCUE (REMS 11)		09/23	JOHN MEYER	5	STRADER ICP/0700	STRADER ICP/1900
E-175 AMB2 BEST PRACTICE (AMB 44)		09/22	DEVIN BEST	2	STRADER ICP/0700	STRADER ICP/1900
O-332 EMPF (MEDIC ANGEL)		10/04	ANGEL THORSVOLD- CISNEROS	1	STRADER ICP/0700	STRADER ICP/1900
8. Division/Group Communication Summary						
Function	Channel	RX Frequency N/W	RX Tone/NAC	TX Frequency N/W	TX Tone/NAC	Mode
TACTICAL	TAC 2	168.2000	167.9	168.2000	167.9	A
COMMAND	CMD 9	173.6000	167.9	169.4625	167.9	A
COMMAND	CMD 10	169.8375	167.9	162.4625	167.9	A
AIR TO GROUND	A/G PRI S	167.1500		167.1500		A
AIR TO GROUND	A/G SEC S	170.2625		170.2625		A
AIR GUARD	AIR GUARD	168.6250		168.6250	110.9	A
9. Prepared By (Resource Unit Leader)			Approved By (Planning Section Chief)		Date	Time
STEPHANIE FALCON			KRISANN KOSEL		09/20/2023	2200

Division/Group Assignment List (ICS 204 WF)

Controlled Unclassified Information//Basic

1. Incident Name:				3.			
UMPQUA FIRES				Branch:		Division/Group	
2. Operational Period: 0700 - 1900							
Date/Time From: 09/21/2023 0700 THU		Date/Time To: 09/21/2023 1900 THU		CHILCOOT E/W			
4. Operations Personnel							
OPERATIONS CHIEF		DAN MARTIN LARAE GUILLORY (T)		SAFETY OFFICERS		ERIC RISDAL SHANE THEALL	
BRANCH DIRECTOR				DIVISION/GROUP SUPERVISOR		NICK PETERS	
5. Resources Assigned this Period							
Strike Team / Task Force / Resource Designator		LWD	Leader	Number Persons	Drop Off PT./Time	Pick Up PT./Time	
6. Control Operations/Work Assignments:							
<p>TASK: Patrol and mop-up any threats to containment line within the division. Chip any remaining debris piles along the 3806, 400, and 3809 roads. Grade and roll 3809 road from the 3806 intersection to the 38 road intersection.</p> <p>PURPOSE: Prevent additional fire growth and repair and damage caused by suppression efforts.</p> <p>END STATE: Fire is contained west of 3806 road and 370 road.</p>							
7. Special Instructions:							
<ul style="list-style-type: none"> • Utilize Chilcoot repeater. Mitigate snag hazard and implement the risk management process in tactical decisions. Support tactics that minimize impacts to private property. Avoid waterways with retardant applications and reduce impact to Salmon/Steelhead protected populations. Ensure signage is adequate to all drop points. Add signage at all major intersections to help with locating drop points. • Resources assigned to this Division E should put OR-UPF-000345 Chilcoot P6QLF5 (0615) on all CTR's and shift tickets. • Resources assigned to this Division W should put OR-UPF-000346 P6QLF4 (0615) on the bottom of CTR's and shift tickets. • H-57 is the nearest helispot for Division E. • H-291 is the nearest helispot for Division W. 							
8. Division/Group Communication Summary							
Function	Channel	RX Frequency N/W	RX Tone/NAC	TX Frequency N/W	TX Tone/NAC	Mode	
TACTICAL	TAC 2	168.2000	167.9	168.2000	167.9	A	
COMMAND	CMD 9	173.6000	167.9	169.4625	167.9	A	
COMMAND	CMD 10	169.8375	167.9	162.4625	167.9	A	
AIR TO GROUND	A/G PRI S	167.1500		167.1500		A	
AIR TO GROUND	A/G SEC S	170.2625		170.2625		A	
AIR GUARD	AIR GUARD	168.6250		168.6250	110.9	A	
9. Prepared By (Resource Unit Leader)			Approved By (Planning Section Chief)			Date	Time
STEPHANIE FALCON			KRISANN KOSEL			09/20/2023	2200

Division/Group Assignment List (ICS 204 WF)
Controlled Unclassified Information//Basic

1. Incident Name:			3.			
UMPQUA FIRES			Branch:		Division/Group	
2. Operational Period: 0700 - 1900			CHILCOOT H			
Date/Time From: 09/21/2023 0700 THU		Date/Time To: 09/21/2023 1900 THU				
4. Operations Personnel						
OPERATIONS CHIEF		DAN MARTIN LARAE GUILLORY (T)		SAFETY OFFICERS		ERIC RISDAL SHANE THEALL
BRANCH DIRECTOR				DIVISION/GROUP SUPERVISOR		JON MILES
5. Resources Assigned this Period						
Strike Team / Task Force / Resource Designator		LWD	Leader	Number Persons	Drop Off PT./Time	Pick Up PT./Time
E-190 ENG4 J3		09/21	JOSE ARIZMENDI	3	STRADER ICP/0700	STRADER ICP/1900
E-184 ENG6 DIAMOND FIRE		09/24	NICHOLAS KING	3	STRADER ICP/0700	STRADER ICP/1900
E-187 ENG6 FRANCO		09/24	REBECCA PICKERING	3	STRADER ICP/0700	STRADER ICP/1900
E-199 WTT1 NEVADA FORESTRY NDF-5181		09/29	JERRY SIMPSON	2	STRADER ICP/0700	STRADER ICP/1900
O-174 EMPF (MEDIC GIFFORD)		09/24	GREGGORY GIFFORD	1	STRADER ICP/0700	STRADER ICP/1900
6. Control Operations/Work Assignments:						
<p>TASK: Continue mop-up and securing along Hipower Creek. Continue lining and securing the fire edge at the head of Hipower creek. Monitor conditions and develop options as needed to burn out areas of dirty burn/ indirect line on the north edge of the fire near Hipower Creek.</p> <p>PURPOSE: To prevent fire from impacting values, such as nearby communities, private timberland, and critical infrastructure by limiting fire spread.</p> <p>END STATE: Fire is contained along existing fireline in Hipower creek, and south of the ridge line above the head of Hipower Creek.</p>						
7. Special Instructions:						
<ul style="list-style-type: none"> Mitigate aerial hazards, both standing live and snag trees. Survey work areas and implement the risk management process in all tactical decisions. Support tactics that minimize impacts to private timber and property. Avoid waterways with retardant applications and use screens to reduce impact to salmon/steelhead protected populations. All resources assigned to this division need to put OR-UPF-000345 P6QLF5 (0615) on their CTR's and shift tickets. H-1 is the nearest helispot for Division H. 						
8. Division/Group Communication Summary						
Function	Channel	RX Frequency N/W	RX Tone/NAC	TX Frequency N/W	TX Tone/NAC	Mode
TACTICAL	TAC 1	168.0500	167.9	168.0500	167.9	A
COMMAND	CMD 8	173.7125	167.9	162.6000	167.9	A
COMMAND	CMD 9	173.6000	167.9	169.4625	167.9	A
AIR TO GROUND	A/G PRI S	167.1500		167.1500		A
AIR TO GROUND	A/G SEC S	170.2625		170.2625		A
AIR GUARD	AIR GUARD	168.6250		168.6250	110.9	A
9. Prepared By (Resource Unit Leader)			Approved By (Planning Section Chief)		Date	Time
STEPHANIE FALCON			KRISANN KOSEL		09/20/2023	2200

Division/Group Assignment List (ICS 204 WF)
Controlled Unclassified Information//Basic

1. Incident Name:				3.		
UMPQUA FIRES				Branch:	Division/Group	
2. Operational Period: 0700 - 1900						
Date/Time From: 09/21/2023 0700 THU		Date/Time To: 09/21/2023 1900 THU		CHILCOOT J		
4. Operations Personnel						
OPERATIONS CHIEF		DAN MARTIN LARAE GUILLORY (T)		SAFETY OFFICERS		
BRANCH DIRECTOR				DIVISION/GROUP SUPERVISOR		
				ERIC RISDAL SHANE THEALL DAN COTHREN		
5. Resources Assigned this Period						
Strike Team / Task Force / Resource Designator	LWD	Leader	Number Persons	Drop Off PT./Time	Pick Up PT./Time	
O-13 TFLD	09/28	JEREMY BRYANT	1	STRADER ICP/0700	STRADER ICP/1900	
O-327 TFLD (T)	09/23	LOGAN O'SHELL	1	STRADER ICP/0700	STRADER ICP/1900	
O-291 HEQB	09/29	BRIAN GENTIS	1	STRADER ICP/0700	STRADER ICP/1900	
O-292 HEQB (T)	09/29	GARRETT GIBBS	1	STRADER ICP/0700	STRADER ICP/1900	
C-49 CRW1 HELENA IHC	09/26	TIGHE STOYANOFF	25	STRADER ICP/0700	STRADER ICP/1900	
C-53 CR2I WENATCHEE RIVER	09/26	BRIAN FLATTEN	18	STRADER ICP/0700	STRADER ICP/1900	
C-52 CRW2 PACIFIC OASIS C-2	09/28	ALEX HESS	20	STRADER ICP/0700	STRADER ICP/1900	
C-54 CRW2 PACIFIC OASIS	09/30	DONTE MARQUEZ	20	STRADER ICP/0700	STRADER ICP/1900	
E-207 ENG3 ORUPF 34	10/02	VICENTE IRANZO	8	STRADER ICP/0700	STRADER ICP/1900	
E-189 ENG4 DIAMOND FIRE	09/23	DEAN WILSON	3	STRADER ICP/0700	STRADER ICP/1900	
E-208 ENG6 OREGON WOODS	10/02	CHARLES PERKINS	3	STRADER ICP/0700	STRADER ICP/1900	
E-13 WTS2 SCOTT MARSHALL	10/03	JUSTIN WEAVER	1	STRADER ICP/0700	STRADER ICP/1900	
E-173 WTS2 SCOTT MARSHALL	10/01	RICHARD JOHNSON	1	STRADER ICP/0700	STRADER ICP/1900	
E-205 WTS2 WESTERN FIRES	10/01	RICHARD DAUGHERTY	1	STRADER ICP/0700	STRADER ICP/1900	
E-206 WTS2 S5	09/22	CHRISTOPHER HARDING	1	STRADER ICP/0700	STRADER ICP/1900	
8. Division/Group Communication Summary						
Function	Channel	RX Frequency N/W	RX Tone/NAC	TX Frequency N/W	TX Tone/NAC	Mode
TACTICAL	TAC 3	168.6000	167.9	168.6000	167.9	A
COMMAND	CMD 9	173.6000	167.9	169.4625	167.9	A
COMMAND	CMD 10	169.8375	167.9	162.4625	167.9	A
AIR TO GROUND	A/G PRI S	167.1500		167.1500		A
AIR TO GROUND	A/G SEC S	170.2625		170.2625		A
AIR GUARD	AIR GUARD	168.6250		168.6250	110.9	A
9. Prepared By (Resource Unit Leader)		Approved By (Planning Section Chief)		Date	Time	
STEPHANIE FALCON		KRISANN KOSEL		09/20/2023	2200	

Division/Group Assignment List (ICS 204 WF)
Controlled Unclassified Information//Basic

1. Incident Name:				3.		
UMPQUA FIRES				Branch:	Division/Group	
2. Operational Period: 0700 - 1900						
Date/Time From: 09/21/2023 0700 THU		Date/Time To: 09/21/2023 1900 THU		CHILCOOT J		
4. Operations Personnel						
OPERATIONS CHIEF		DAN MARTIN LARAE GUILLORY (T)		SAFETY OFFICERS		
BRANCH DIRECTOR				DIVISION/GROUP SUPERVISOR		
				ERIC RISDAL SHANE THEALL DAN COTHREN		
5. Resources Assigned this Period						
Strike Team / Task Force / Resource Designator		LWD	Leader	Number Persons	Drop Off PT./Time	Pick Up PT./Time
E-158 SKG2 HARD HUNT		10/01	MARSHALL MEACHAM	2	STRADER ICP/0700	STRADER ICP/1900
E-136 UTV					STRADER ICP/0700	STRADER ICP/1900
E-137 UTV					STRADER ICP/0700	STRADER ICP/1900
O-142 REAF		09/24	BRADY DODD	1	STRADER ICP/0700	STRADER ICP/1900
O-143 REAF		09/21	MADELYN HOUSTON	1	STRADER ICP/0700	STRADER ICP/1900
O-233 REAF		09/21	DANE SJODEN	1	STRADER ICP/0700	STRADER ICP/1900
O-234 REAF		09/24	NATALIE MILLS	1	STRADER ICP/0700	STRADER ICP/1900
O-238 REAF		09/21	CHRIS MCGRATH	1	STRADER ICP/0700	STRADER ICP/1900
O-237 REAF (T)		09/25	ELIZABETH DAY	1	STRADER ICP/0700	STRADER ICP/1900
E-142 AMB2 CARDINAL MEDICAL SOLUTIONS (MED MOD 1)		09/23	CHARLES CARLSON	2	STRADER ICP/0700	STRADER ICP/1900
E-193 AMB2 FRONT LINE (AMB 55)		09/28	LANCE PUIG	2	STRADER ICP/0700	STRADER ICP/1900
8. Division/Group Communication Summary						
Function	Channel	RX Frequency N/W	RX Tone/NAC	TX Frequency N/W	TX Tone/NAC	Mode
TACTICAL	TAC 3	168.6000	167.9	168.6000	167.9	A
COMMAND	CMD 9	173.6000	167.9	169.4625	167.9	A
COMMAND	CMD 10	169.8375	167.9	162.4625	167.9	A
AIR TO GROUND	A/G PRI S	167.1500		167.1500		A
AIR TO GROUND	A/G SEC S	170.2625		170.2625		A
AIR GUARD	AIR GUARD	168.6250		168.6250	110.9	A
9. Prepared By (Resource Unit Leader)			Approved By (Planning Section Chief)		Date	Time
STEPHANIE FALCON			KRISANN KOSEL		09/20/2023	2200

Division/Group Assignment List (ICS 204 WF)

Controlled Unclassified Information//Basic

1. Incident Name:		3.				
UMPQUA FIRES		Branch:	Division/Group			
2. Operational Period: 0700 - 1900						
Date/Time From: 09/21/2023 0700	THU	Date/Time To: 09/21/2023 1900	THU			
4. Operations Personnel						
OPERATIONS CHIEF		DAN MARTIN LARAE GUILLORY (T)		SAFETY OFFICERS		
BRANCH DIRECTOR				DIVISION/GROUP SUPERVISOR		
				ERIC RISDAL SHANE THEALL DAN COTHREN		
5. Resources Assigned this Period						
Strike Team / Task Force / Resource Designator	LWD	Leader	Number Persons	Drop Off PT./Time	Pick Up PT./Time	
6. Control Operations/Work Assignments:						
<p>TASK: Continue to take action to secure fire from the southwest corner of Hipower Creek to the 3803 RD. Complete fireline preparation on the indirect line off the 3803 RD. Monitor conditions and continue preparation for implementing firing plan in indirect areas.</p> <p>PURPOSE: To prevent fire from impacting nearby communities, private timberland, and critical infrastructure by limiting fire spread.</p> <p>END STATE: Fire is contained east of the forest boundary, west of the Hipower Bluffs and north of the indirect line connected to the 3803 RD.</p>						
7. Special Instructions:						
<ul style="list-style-type: none"> • Survey and mitigate aerial hazards including live trees and snags as needed. Implementing risk management process in all tactical decisions, utilize tactics that minimize impacts to private property. Avoid waterways with retardant. Use screens to reduce impact on salmon/ steelhead protected populations. • Ensure signage is adequate at all drop points. Add signage at all major intersections to help with locating drop zones. • All resources assigned to this Division need to put OR-UPF 000345 P6QLF5 (0615) on all CTR's and shift tickets. 						
8. Division/Group Communication Summary						
Function	Channel	RX Frequency N/W	RX Tone/NAC	TX Frequency N/W	TX Tone/NAC	Mode
TACTICAL	TAC 3	168.6000	167.9	168.6000	167.9	A
COMMAND	CMD 9	173.6000	167.9	169.4625	167.9	A
COMMAND	CMD 10	169.8375	167.9	162.4625	167.9	A
AIR TO GROUND	A/G PRI S	167.1500		167.1500		A
AIR TO GROUND	A/G SEC S	170.2625		170.2625		A
AIR GUARD	AIR GUARD	168.6250		168.6250	110.9	A
9. Prepared By (Resource Unit Leader)		Approved By (Planning Section Chief)		Date	Time	
STEPHANIE FALCON		KRISANN KOSEL		09/20/2023	2200	

IWI Procedures

Fire Line

1. Request closest EMT/Medic to the injured person and report to DIV Supervisor.
2. Contact **Chilcoot Communications** and declare a “Red medical” (critical), “Yellow medical” (serious), or “Green medical” (minor). Request emergency radio traffic if needed.
3. Give location of patient and best access for initial responders.
4. Describe injury(s): Are they bleeding? How much? Are they conscious? Can they talk? Do they know what’s going on? How many people are hurt.
5. Gather information for MIR and relay to dispatch as soon as practical (see MIR back page)

Sharps Basecamp

1. Life threatening emergency, call 911
2. Call Chilcoot Communications on Command or 949-648-1591
3. Contact (go to) the medical tent.
4. Call the medical tent 310-780-4296

Strader ICP


1. Life threatening emergency, call 911
2. Call Chilcoot Communications on Command or 949-648-1591
3. Non-life-threatening go to blue medical trailer located between lunch trailer and laundry trailer



No need for a nasty look, if someone is coughing just turn your head and step away.

MEDICAL PLAN (ICS 206 WF)

Controlled unclassified Information Basic

1. Incident/Project Name			2. Operational Period					
Umpqua Fires (Dinner, Brice Creek & Chilcoot)			Date/Time		9/21/2023 - 9/22/2023, 0600 - 0600			
3. Ambulance Services								
Name	Complete Address	Phone & EMS Frequency	Advanced Life Support					
			Yes	No				
South Lane Fire & Rescue	233 E. Harrison Ave, Cottage Grove, OR	Command Channel/911(Backup)	X					
Umpqua Valley Ambulance	1290 NE Cedar St. Roseburg OR	Command Channel/911 (backup)	X					
4. Air Ambulance Services								
Name		Phone	Type of Aircraft and Capability					
Commercial Air Ambulance		911 / 541-344-2211	Closest available based on availability					
Teton, N38HX		Command	Short Haul, Day time use only					
Yellowstone N234BH		Command Channel	Short Haul Capable (Grants Pass OR)					
Name Address	GPS Datum – WGS 84		Travel Time		Phone	Helipad		Level of Care
			Air	Gnd		Yes	No	
Mercy Medical Center 2700 NW Stewart Pkwy Roseburg, OR	Lat: N 43° 14.567' Long: W 123° 21.983'	VHF:	30 min	1 hr	(541) 673-0611	X		Level III Trauma
PeaceHealth Cottage Grove Community MC 1515 Village Dr Cottage Grove, OR	Lat: N 43° 48.2292' Long: W 123° 2.3801'	VHF:	15 min	30 Min	(541) 942-6646	X		Non Trauma
Sacred Heart MC Riverbend 3333 Riverbend Dr. Springfield, OR 97477	Lat: N 44° 04.876' Long: W 123° 01.588	VHF:	30 min	1 hr	(541) 222-6929	X		Level II Trauma
McKenzie-Willamette MC 1460 G St Springfield, OR 97477	Lat: N 44° 03.217' Long: W 123° 00.219'	VHF:	30 min	1 hr	(541) 726-4580	X		Level III
Legacy Emanuel 2801 N Gantenbein Ave Portland OR 97227	Lat: N 45° 32.66' Long: W 122° 40.18'	VHF:	1 hr	2 hr 30 min	(503) 413-2285	X		Level I / Burn Center
6. Branch/Div/Group	Area Location Capability							
Sharps Creek Base Camp	O-210 MEDL Nokes, O-106 MEDL(t) Field E-105 AMBU 6 - Barto							
DIV S/Z (Grizzly)	O-15 REMS 3 - Howell, O-133 MEDIC Nelson (Responding Ambu. is AMBU 5)							
DIV A/C/D (Brice Creek)	O-29, REMS 1- Decker, E-64, AMBU 5 - Evans (Responding Ambu. to Dinner Fire is AMBU							
Night Shift (Grizzly)	E-63, AMBU 4 - Roth							
Chilcoot ICP	E-33 Camp Medical Station - Sargent, O-246 MEDL Belino, O-247 MEDL(t) Smith O-240.15 Field MEDL Prasch, O-330 Field MEDL(t) Getman							
DIV E/W (Chilcoot)	O-72 REMS 11- Meyer, E-175 AMBU 44 - Best, O-332, MEDIC Angel							
DIV H (Chilcoot)	O-174 MEDIC Gifford							
DIV J (Chilcoot)	E-142 MED. MOD 1 - Carlson, E-193 AMBU 55 - Puig							
8. Prepared By (Medical Unit Leader)	9. Date/Time	10. Reviewed By (Safety Officer)	11. Date/Time					
Paul Smith, MEDLT	9/20/2023	Eric Risdal 	9/20/2023					

ACTIVITY LOG (ICS 214)

1. Incident Name:	2. Operational Period: Date From: _____ Date To: _____ Time From: _____ Time To: _____
--------------------------	--

3. Name:	4. ICS Position:	5. Home Agency (and Unit):
-----------------	-------------------------	-----------------------------------

6. Resources Assigned:		
Name	ICS Position	Home Agency (and Unit)

7. Activity Log:	
Date/Time	Notable Activities

8. Prepared by: Name: _____ Position/Title: _____ Signature: _____ ICS 214, Page 1	Date/Time: _____
--	------------------

MEDICAL PLAN (ICS 206 WF)

Controlled Unclassified Information//Basic

Medical Incident Report

FOR A NON-EMERGENCY INCIDENT, WORK THROUGH CHAIN OF COMMAND TO REPORT AND TRANSPORT INJURED PERSONNEL AS NECESSARY.

FOR A MEDICAL EMERGENCY: IDENTIFY ON SCENE INCIDENT COMMANDER BY NAME AND POSITION AND ANNOUNCE "MEDICAL EMERGENCY" TO INITIATE RESPONSE FROM IMT COMMUNICATIONS/DISPATCH.

Use the following items to communicate situation to communications/dispatch.

1. CONTACT COMMUNICATIONS / DISPATCH (Verify correct frequency prior to starting report)

Ex: "Communications, Div. Alpha. Stand-by for Emergency Traffic."

2. INCIDENT STATUS: Provide incident summary (including number of patients) and command structure.

Ex: "Communications, I have a Red priority patient, unconscious, struck by a falling tree. Requesting air ambulance to Forest Road 1 at (Lat./Long.) This will be the Trout Meadow Medical, IC is TFLD Jones. EMT Smith is providing medical care."

Severity of Emergency / Transport Priority	<input type="checkbox"/> RED / PRIORITY 1 Life or limb threatening injury or illness. Evacuation need is IMMEDIATE <i>Ex: Unconscious, difficulty breathing, bleeding severely, 2° – 3° burns more than 4 palm sizes, heat stroke, disoriented.</i> <input type="checkbox"/> YELLOW / PRIORITY 2 Serious Injury or illness. Evacuation may be DELAYED if necessary. <i>Ex: Significant trauma, unable to walk, 2° – 3° burns not more than 1-3 palm sizes.</i> <input type="checkbox"/> GREEN / PRIORITY 3 Minor Injury or illness. Non-Emergency transport <i>Ex: Sprains, strains, minor heat-related illness.</i>	
Nature of Injury or Illness & Mechanism of Injury		<i>Brief Summary of Injury or Illness (Ex: Unconscious, Struck by Falling Tree)</i>
Transport Request		<i>Air Ambulance / Short Haul/Hoist Ground Ambulance / Other</i>
Patient Location		<i>Descriptive Location & Lat. / Long. (WGS84)</i>
Incident Name		<i>Geographic Name + "Medical" (Ex: Trout Meadow Medical)</i>
On-Scene Incident Commander		<i>Name of on-scene IC of Incident within an Incident (Ex: TFLD Jones)</i>
Patient Care		<i>Name of Care Provider (Ex: EMT Smith)</i>

3. INITIAL PATIENT ASSESSMENT: Complete this section for each patient as applicable (start with the most severe patient)

Patient Assessment: See IRPG page 106

Treatment:

4. TRANSPORT PLAN:

Evacuation Location (if different): (Descriptive Location (drop point, intersection, etc.) or Lat. / Long.) Patient's ETA to Evacuation Location:

Helispot / Extraction Site Size and Hazards:

5. ADDITIONAL RESOURCES / EQUIPMENT NEEDS:

Example: Paramedic/EMT, Crews, Immobilization Devices, AED, Oxygen, Trauma Bag, IV/Fluid(s), Splints, Rope rescue, Wheeled litter, HAZMAT, Extrication

6. COMMUNICATIONS: Identify State Air/Ground EMS Frequencies and Hospital Contacts as applicable

Function	Channel Name/Number	Receive (RX)	Tone/NAC *	Transmit (TX)	Tone/NAC *
COMMAND					
AIR-TO-GRND					
TACTICAL					

7. CONTINGENCY: Considerations: If primary options fail, what actions can be implemented in conjunction with primary evacuation method? Be thinking ahead.

8. ADDITIONAL INFORMATION: Updates/Changes, etc.

REMEMBER: Confirm ETA's of resources ordered. Act according to your level of training. Be Alert. Keep Calm. Think Clearly. Act Decisively.