



Incident Objectives (ICS 202)

1. Incident Name		2. Date Prepared		3. Time Prepared	
Umpqua Fires		9/21/2023		2000	
4. Operational Period (Date and Time)					
From:	9/22/2023	at	700	To:	9/22/2023 at 1900
5. Strategic Framework and Leaders Intent					
Strategic Framework:					
Implement suppression strategies that minimize impacts to identified values at risk, and that ensures firefighter and public safety are the top priority					
Specifically manage risk to firefighters by ensuring hazards are identified, assessed, and where possible mitigated. Be prepared to accept residual risk when exposure is commensurate with values threatened and the probability of achieving objectives is high.					
Leaders Intent:					
Engage in all work assignments with a high degree of professionalism and provide excellent customer service to all parties involved with the incident. All assigned personnel should:					
* Exhibit professional behavior					
* Ensure effective communication					
* Manage personal safety and the safety of others					
* Conduct effective fatigue management and implement work/rest cycles					
6. Management Objectives and Requirements					
Implement operational plans that establish holding features across the entire perimeter of each fire resulting in minimized duration and physical extent of each, and maximizing the protection of:					
* Highway 138 corridor					
* Private timber lands					
* Bohemia Mining District, Fairview Comm Site, Chilcoot Repeater, and other infrastructure					
* Active USFS timber sales					
* Natural and cultural resources					
Coordinate all fire suppression and repair work with Resource Advisors to protect natural and cultural values.					
Maintain effective relationships by ensuring timely information between the IMT, affected agencies, and the public.					
7. Operational Period Command Emphasis					
Take some time today to review the Medical Incident Report and Incident Within an Incident Procedure with your crew. Run some scenarios with 'what if'. Do you know how to find the information regarding nearest medical resources besides your crew members? Do you know how to fill out and use the MIR 8 line? The more you drill, the less stress you will feel when the worst is happening. How many of your crew understand these tools and could use them in a crisis when the crew leader is not present? You have identified and attempted to mitigate the hazards, now be prepared anyway.					
8. Attachments (check if attached)					
X	Organization List (ICS 203)	X	Medical Plan (ICS 206)	X	Fire Behavior
X	Assignment List (ICS 204)	X	Safety Message		
X	Communications Plan (ICS 205)	X	General Forecast		
9. Prepared by (Planning Section Chief)			10. Approved by (Incident Commander)		
					

ORGANIZATION ASSIGNMENT LIST (ICS 203)

NORTHWEST TEAM 6				7. Operations Section	
1. Incident Name		Operations		DAN MARTIN / LARAE GUILLORY (T)	
GRIZZLY / DINNER / BRICE CREEK / CHILCOOT / RIDGE FIRES		Field Operations		JESS BOHNSACK / JOE PARR (T)	
2. Date		Time		Planning Operations	
9/21/2023		2000		TRISH WALLACE / STEVE YOUNG (T)	
2a. Operational Period		Planning Operations		TIM NUTLEY	
From: 9/22/2023 0700 To: 9/22/2023 1900		Strategic Operations			
3. Incident Commander(s) and Staff					
Incident Commander	TYSON ALBRECHT				
Deputy	ADAM VEALE / KEN PAUL / STEVE HAWKINS		DIVISION	BRICE CREEK	A/C/D DOUG CATES
Safety Officer	ERIC RISDAL / SHANE THEALL		DIVISION	GRIZZLY	S/Z RORY HIETT
Safety Officer	AL AUGUSTINE		DIVISION	GRIZZLY	NIGHT
Medical Unit	JOHN NOKES / CHRISTY FIELD (T)		DIVISION	CHILCOOT	E/W NICK PETERS
Medical Unit	LAURA BELINO / PAUL SMITH (T)		DIVISION	CHILCOOT	H JON MILES
Information Officer	JODIE BARRAM / JESSICA REED (T)		DIVISION	CHILCOOT	J DAN COTHREN
Information Officer	NANCY JONES / JOE ANDERSON		DIVISION		
Liaison Officer	KIM TITUS / GARRIT CRAIG		DIVISION		
Human Resources	AUDREY MATSUMONJI / K.C. BRIGGS (T)				
			Branch Director		
			DIVISION		
4. Agency/Organization Representative					
UMPQUA NATIONAL FOREST	DAVID ANDERSEN / JIMMY TYREE		DIVISION		
UMPQUA NATIONAL FOREST	MARK SOMMER (T)		BRANCH		
WILLAMETTE NF	MOLLY JUILLERAT		Branch Director		
BLM - EUGENE	DENNIS TEITZEL		DIVISION		
BLM - ROSEBURG	HEATHER WHITMAN		DIVISION		
ODF	CHRIS CLINE / JOHN FLANNIGAN		DIVISION		
DFOA	PAUL RITTER		Branch Director		
LEAD READ	JED HANCOCK / BRADY DODD		GROUP		
USFS - SW IARR	MANUEL MARTINEZ		GROUP		
5. Planning Section					
Chief	KRISANN KOSEL		GROUP		
Deputy	SUE PUDDY / JOHN NONEMAN / SHANNA MCCARTY		GROUP		
Resource Unit	STEPHANIE FALCON / JAMES MAHAFFY (T)				
Situation Unit	KENT ELLETT / DAMIEN HAWLEY-JONES (T)		GROUP		
Status Check-in	AMY BURT (T) / DIANA HECKATHORN (T)		DIVISION		
GISS	EMILY RUSH / ROBIN BIGGS (T) / DAVID HINES (T)		GROUP		
Fire Behavior	SARAH BUSH				
Meteorologist	JACK MESSICK / SPENCER TANGEN (T)				
DMOB					
DOCL	DEIDRE SMITH (V)				
FOBS					
7b. Air Operations Branch					
			Air Operations Director		DOUG LEDGERWOOD
			Air Support Supervisor		KEVIN KOZAK
6. Logistics Section					
Chief	JOE NEER / CINDY WEDEKIND		Air Attack Supervisor		
Facilities Unit	ANNA TANKERSLEY / MIKE VAUGHN (T)		Helicopter Coordinator		
Supply Unit	JON BYERLY				
Ground Support Unit	KEVIN PALM				
Ground Support Unit	EMILY FAILS (T) / BRANDON SIEDERS (T)				
Communications Unit	BERRY MATHIAS / DAVID MARSCH				
ITSS	MATT MATSON / JAMES BROWN				
Food Unit	MIKE SPATZ / JOE DEPAOLA (T)				
Food Unit	REE ELLA VONBORSTEL				
Security Unit	RONNIE OROPEZA				
Ordering Manager	DONNA DIXON / NOE REYES / MICHAEL SMITH (T)				
Receiving & Distribution	KARLIS LAZDA / ED JENSEN				
Base Camp Manager	BEN WALKER (T)				
9. Prepared by:		JAMES MAHAFFY	Date: 9/21/2023		Signature: Sue Puddy, PSC2



Fire Weather Forecast



FORECAST NO: 23
FORECAST FOR: Friday Day Shift
SHIFT DATE: 22 September 2023
DATE AND TIME ISSUED: 21 Sep 2023/1930

NAME OF FIRE: Umpqua Fires
UNIT: OR-UPF
SIGNED: Jack Messick, IMET 208-241-1046
 Spencer Tangen, IMET(t) 208-869-9452

WEATHER DISCUSSION: Low pressure will exit Oregon today with a weak upper ridge building in its place. This will result in a return to westerly flow and warmer and drier conditions. Skies will be mostly clear, with cold temperatures this morning warming quickly under full sunshine. Valley inversions will trap smoke this morning before lifting around 1200, especially near the Chilcoot and Grizzly fires. Light easterly winds this morning will shift to northwest this afternoon. A fall pattern will result in chances of rain increasing drastically starting Sunday.

FRIDAY:

WEATHER: Mostly sunny.

	Max Temperatures	Minimum Relative Humidity
Valleys (2500-3500 ft)	74-79° (Up 10)	21-27% (Down 10-15%)
Ridges (3500-4500 ft)	69-74° (Up 11)	26-31% (Down 15-20%)

20-FOOT WINDS:

- Chilcoot:** Southeast 2 to 6 mph, by 1200 becoming west northwest 3 to 8 mph gusts to 14 mph.
- Grizzly:** Downvalley 1 to 4 mph, by 1100 becoming west northwest 3 to 8 mph gusts to 14 mph.
- Brice Creek:** Drainage 0 to 3 mph, by 1100 becoming west northwest 2 to 5 mph gusts to 10 mph.
- Dinner/Ridge:** Southeast 3 to 8 mph, by 1100 becoming west northwest 3 to 7 mph gusts to 12 mph.

AVIATION: Smoke trapped in valley inversions through 1200. 5000ft MSL afternoon temperatures 16°C.
CWR (≥ 0.25"): Zero **LAL:** 1 **HAINES:** 4 **INVERSION BREAK/MH:** 1200 hrs/6000ft.
CAMP FORECAST: **Strader ICP:** 81F **Sharps Creek Base Camp:** 80F

FRIDAY NIGHT:

WEATHER: Increasing clouds. Chilly but not as cold.

	Min Temperatures	Maximum Relative Humidity
Valleys (2500-3500 ft)	39-46° (Up 5)	65-80% (Down 5-10%)
Ridges (3500-4500 ft)	41-49° (Up 5)	55-65% (Down 7-12%)

20-FOOT WINDS:

- Valleys: Northwest 2 to 5 mph early in the evening, becoming downslope/downvalley 2 to 4 mph by 2100.
- Ridges: Northwest 3 to 6 mph in the evening, becoming south 2 to 5 mph overnight.

CWR (≥ 0.25"): 0 **LAL:** 1 **INVERSIONS:** Strong inversions overnight setting after 2100.
CAMP FORECAST: **Strader ICP:** 41F **Sharps Creek Base Camp:** 40F

EXTENDED OUTLOOK: Saturday/Saturday night/Sunday: Increasing cloudiness, becoming cloudy by 1200. A slight chance of rain after 1500 Saturday. Highs 63 to 73. Low 40 to 50. Afternoon humidity 30 to 38 percent on Saturday, higher Sunday. Saturday afternoon ridge wind southwest 6 to 12 mph gusts to 20 mph. Sunday afternoon ridge wind southeast 7 to 13 mph gusts to 24 mph. Sunday night/Monday: Rain. Most likely amount 0.50 to 0.75 of an inch, but 0.09 to 1.12 possible. Low 45 to 55. High 60 to 70. Much higher humidity. Afternoon ridge wind southwest 10 to 16 mph gusts to 30 mph.

TAKING WEATHER OBSERVATIONS? Send to jack.messick@noaa.gov or turn in at ICP.

FIRE BEHAVIOR FORECAST

FORECAST NUMBER: 23	TYPE OF FIRE: Wildfire
FIRE NAME: Umpqua Fires	OPERATIONAL PERIOD: Day Shift, September 22, 2023
DATE ISSUED: Thursday September 21, 2023	TIME ISSUED: 19:30 Hours
UNIT: Umpqua National Forest	SIGNED: Sarah Bush – FBAN

INPUTS

WEATHER SUMMARY: See Fire Weather Forecast for Details

FUELS:

Fuels in the fire areas are primarily composed of *Timber Litter*, and *Timber Understory with moss/lichen present in most stands*. Mature conifer stands with western hemlock and Douglas fir present, generally have heavy surface fuel loading. 30 to 50+ year old second growth conifer stands contain needle litter and some down woody debris. Brush and reproduction present in areas with less dense canopies.

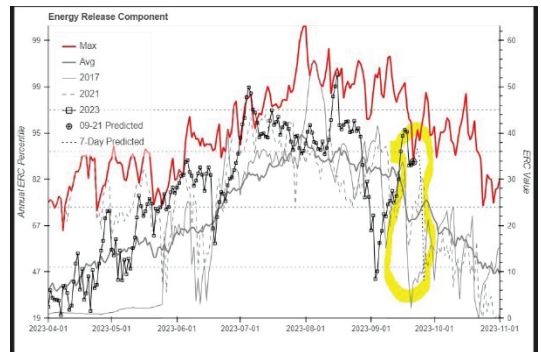
Brice, Grizzly- Forecast -ERC 86th Percentile. Yesterday's obs. **1hr-13%, 10hr-19%**, 100hr-14%, 1000hr-14%
 Chilcoot - Forecast -ERC 90th percentile. Yesterday's obs. **1hr-12%**, 10hr-16%, 100hr-15%, 1000hr-15%

OUTPUTS

FIRE BEHAVIOR GENERAL:

Days are getting shorter and reducing the burn period. Conditions will be warmer and drier again today. The 1000-hr fuel moisture remains constant, making them available to burn and receptive to embers. Expect lichen to be available to burn with moderate potential for torching from the lichen as the RH will be below the critical 30% threshold.

The 1-hour fuel moistures are lower today and will be available to burn once the sun hits them, earlier in the burn period than yesterday. The 10 and 100-hr fuels in exposed stands will be available to carry fire at low to moderate rates of spread. Creeping and backing will be the most common surface fire behavior observed in areas with active burning.



FIRE BEHAVIOR SPECIFIC:

Brice, Grizzly, Chilcoot

Div J can expect up to 2-3' flame lengths and less than 5 ch/hr ROS where there is active fire. Fire spread potential will be largely dependent on location, aspect, and exposure/sheltering. Expect creeping and smoldering in the sheltered stands near DP 304 and along the eastern edge of fire towards DP 300. Smoldering is expected on **Div E** with less than 2' flame lengths. Expect minimal smoldering and creeping fire behavior with up to 2' flame lengths through unburned pockets of fuels on **Div A** with a limited chance of isolated torching.

Isolated pockets of unburned fuels will produce smoke on the Ridge and Dinner fires. Activity would be limited to the interior of the fires today. With warm and dry conditions, expect backing fire with of smoke production on **Div S/Z** as the heavy dead and down consumes. Expect small scale tree torching due <30% Rh with lichen availability. Fire continues to back towards the confluence of Champion and Grizzly Creeks on the NW edge of the fire. If the fire crosses Grizzly Creek to the east, wind/slope alignment would push fire ESE towards the 2212 rd. at 6ch/hr. The area would exhibit up to 5'FL without suppression actions.

Spotting distance up to 0.2 mi, Probability of Ignition- 20% shaded and overnight; 25% unshaded

Initial Attack: In the event resources respond to a new start, recognize that fuels, topography, and conditions may be different than areas you have previously worked in.

AIR OPERATIONS: Inversion breaking around noon.

SAFETY

Always base actions on current and expected fire behavior given the environmental conditions in your local areas. Maintain situational awareness for changing conditions as you change locations on the fire.

AIR OPERATIONS SUMMARY 220	Prepared/Approved: Doug Ledgerwood	Prepared: 9/21/2023	Prepared Time: 1800 hrs.
1. INCIDENT NAME: UMPQUA FIRES	2. OPERATIONAL PERIOD 09/22/2023	START TIME: 0700	SUNRISE: 0700
		END TIME: 1900	SUNSET: 1909

3. REMARKS (Safety Notes, Hazards, Air Operations Special Equipment, etc.).
Smoky conditions * Steep terrain * Shadow effects
 Only use approved dip sites. Do not cross contaminate water sources without sanitizing bucket/snorkel. All GPS data to be collected in DEGREES MINUTES, DECIMAL MINUTES.
 Avoid foam within 300' of waterways or bodies of water. Notify AOBD if this is not achieved
 Aircraft costs daily to: 2023.chilcoot.finance@firenet.gov and cc to 2023.chilcoot.airops@firenet.gov

4. READY ALERT AIRCRAFT:
 N234BH Yellowstone Short Haul:
 @Grants Pass.
 N38HX Teton Short Haul @
 Sunriver.

5. TFR: #3/1276 (A15) North
 Freq 121.3750
 Surface to 9000ft MSL
 Operational 1500-0400 UTC
TFR: #3/7750 (A51) South
 Freq:132.525
 Surface to 8500 MSL
 Operational 1630-0400 UTC

PERSONNEL	NAME	PHONE #	7. FREQUENCIES			AM	FM
Glide Helibase			8. FIXED-WING Avail/ Type/ Make-Model/ N#/ Base				
AOBD	Doug Ledgerwood	541-852-0633	A/A TFR and Primary North	121.3750		165.9875	<i>AIRTANKERS: ORDER THRU ATGS</i>
ASGS	Kevin Kozak	360-280-6714	A/G Primary (A-4) North			173.5000	ATGS – order through Roseburg Dispatch
			A/G Secondary (A-5) North			167.1500	Landing Sites on Fire: See pilot map
			A/A TFR and Primary South	132.5250		170.2625	Laying Cr Helispot: 43°42.698'N X 122°42.114'W 1224ft Cottage Grove S61: 43°48.246'N X 123°1.923'W 641ft
			A/G Primary (A-6) South			163.1000	Glide Helibase 43° 18.922' X 123° 4.415'
			A/G Secondary (A-7) South				Tank Dips: See Pilot Map
			Deck Tone-156.7 (TX/RX)				
			IA A/G 49 USFS			168.0375	LAKE DIPS:
			IA A/G 81 USFS			166.9500	Gertrude Lk 43°35.698'N X 122°32.452'W 3990 ft
			VME029 Tone 156.7(TX/RX)			155.3475	Crawfish Lk 43°37.502'N X 122°42.222'W 4794 ft
			CTAF			122.8	Crystal Lk 43°35.602 N X 122°38.655 W 4650 ft
			Air Guard Tone 110.9 (TX)			168.6250	Elephant Lake 43°35.742 X 122°39.237 W 5126 ft
							Helibase Comm Trailer – Incident Response (E-19)

FAA N#	T Y	MAKE/ MODEL	BASE	START	AVAIL	REMARKS	FAA N#	TY	MAKE/ MODEL	BASE	START	AVAIL	REMARKS
526MW (A-10)	1	KMAX	Glide	0700	0800		32HX (A-20)	3	AS 350	Glide	0700	0800	11 personnel
N357KA (A-57)	1	KMAX	Glide	0700	0800								
N933CH(A-39)	2	Bell 205 A1	Glide	0700	0800	15 personnel							

SAFETY MESSAGE

INCIDENT: Chilcoot/Grizzly

DATE: September 22, 2023 TIME: 24 Hours

Major Hazards and Risks:

- **Driving:** The job isn't over, until you all get home. Maintain SA throughout. Driving remains our greatest hazard. Changing weather increases that risk.
HAZARD TREES: Look up, look down, Look around for signs of fire weakened trees.
- **HEAVY EQUIPMENT:** Avoid working below equipment, maintain a safe distance from equipment, always ensure that the operator sees you and makes positive contact.

Fire Order of the Day: Give clear instructions and be sure they are understood.

- Brief others as needed.
- Be clear and specific.
- Don't assume they know what you mean.

Operational Leadership

- TAKE CHARGE of assigned resources
- MOTIVATE with a "CAN DO SAFELY" attitude
- DEMONSTRATE INITIATIVE take action
- COMMUNICATE.... give specific instruction
- SUPERVISE.....be accountable for your actions

Maintain situational awareness in all assignments including the **driving** on all highways and other roads. Continually watch for **wildlife on roadways**.

Coming **wet weather** can make roadways slick, increase chance of slips, trips falls, and increase **respiratory illness**. Take precautions accordingly.

Continue to assess all snags as well as green trees prior to working in timbered areas. Watch for and identify **HAZARD TREES** and **stump holes**.

Drink plenty of water and other fluids throughout shift to prevent **dehydration**.

Realize there is much work yet to do. Keep your foot on the gas until all of the work is done, while keeping up your SA.



Safety Officers: Risdal, Augustine, Theall, Johnson

LOGISTICS PAGE

Strader ICP:

Email orders to 2023.chilcoot.ordering@firenet.gov

Location	373 French Creek Road Glide OR, 97443
Supply	Hours: 0600 - 2130
Ground Support	Hours: 0600 - 2130
Fuel Truck	Hours: 0630 - 2100
Weed Wash	Hours: 0700 - 2000
Meals	Hours: Breakfast – 0600 - 0930 & Dinner – 1800 - 2100
Laundry	Hours: 0500 - 2200
Showers	Hours: 0500 - 1200 & 1400-2200

Sharps Creek Base Camp:

Email orders to 2023.dinner.ordering@firenet.gov

Location	73792 Sharps Creek Road Dorena OR, 97434
Supply	Hours: 0600 - 2130
Ground Support	Hours: 0600 - 2200
Fuel Truck	Hours: 0600 - 2200
Weed Wash	Hours: 0700 - 2000
Meals	Hours: Breakfast – 0600 - 0830 & Dinner – 1700 - 2030
Laundry	Hours: 0600-0900 1800-2100 drop off at Ground Support for 24 hour return
Showers	Hours: 0600 - 1200 & 1400 - 2200

1-Mile Hose Kit for PNW Team 6

Please note this is what will be sent out with an order for a 1- mile hose kit from supply with Team 6.

NFES	QUANTITY	ISSUE	DESCRIPTION
1239	50	LG	1 1/2" Hose
1238	25	LG	1" Hose
1016	50	LG	3/4" Hose
0010	25	EA	Reducers 1 1/2" to 1"
0733	20	EA	Reducers 1" to 3/4"
0231	25	EA	1 1/2" Gated Wyes
0259	20	EA	1" Gated Wyes
0904	25	EA	3/4" Gated Wyes
0024	25	EA	Forrester Nozzles
0136	25	EA	Garden Nozzle
0738	25	EA	3/4" Shut Off
0664	2	EA	Fold a Tank 1500 gal
3870	2	EA	Mark III Kits
0606	3	EA	Can, safety
7724	3	EA	Oil, 2 stroke mix
0805	3	EA	Tags, 2 stroke
0148	2	EA	Pump, Mk III

INCIDENT RADIO COMMUNICATIONS PLAN (ICS 205)

Controlled Unclassified Information //Basic

1. Incident Name:		2. Date Prepared:		3. Operational Period:	
CHILCOOT/GRIZZLY/RIDGE/BRICE/DINNER FIRES		Date: 09/21/23		Date/Time from: 09/22/23 0700 HRS	
				Date/Time To: 09/23/23 0700 HRS	

4. Basic Radio Channel Use:											
Zone Group	Ch #	Function	Channel Name/Trunked Radio System Talk Group	Assignment	RX Freq	RX Tone/NAC	TX Freq	TX Tone/NAC	Mode (A.O. 0<M)	Remarks	
	1	TACTICAL	TAC 1	DIV A/C/D/H and Suppression repair	168.0500	167.9	168.0500	167.9	A	DIVISION ALPHA, CHARLIE, DELTA, HOTEL, SUP REPAIR TACTICAL	
	2	TACTICAL	TAC 2	DIV E AND W	168.2000	167.9	168.2000	167.9	A	DIVISION ECHO AND WHISKEY TACTICAL	
	3	TACTICAL	TAC 3	DIV J	168.6000	167.9	168.6000	167.9	A	DIVISION JULIET TACTICAL	
	4	TACTICAL	TAC 4	DIV S / Z	166.7250	167.9	166.7250	167.9	A	DIVISION SIERRA / ZULU TACTICAL	
	5	AIR TO GROUND	A/G PRI N	AIR TO GROUND PRIMARY	165.9875	NONE	165.9875	NONE	A	AIR TO GROUND OPERATIONS PRIMARY NORTH	
	6	AIR TO GROUND	A/G SEC N	AIR TO GROUND SECONDARY	173.5000	NONE	173.5000	NONE	A	AIR TO GROUND OPERATIONS SECONDARY NORTH	
	7	COMMAND	CMD 7	COMMAND	169.7500	167.9	167.1000	167.9	A	COMMAND 7-LOCATED ON SCOTT MOUNTAIN	
	8	COMMAND	CMD 8	COMMAND	173.7125	167.9	162.6000	167.9	A	COMMAND 8- LOCATED ON PIG IRON LOOKOUT	
	9	COMMAND	CMD 9	COMMAND	173.6000	167.9	169.4625	167.9	A	COMMAND 9- LOCATED ON CHILCOOT MOUNTAIN	
	10	COMMAND	CMD 10	COMMAND	169.8375	167.9	162.4625	167.9	A	COMMAND 10- LOCATED ON LOOKOUT MOUNTAIN	
	11	COMMAND	CMD 11	COMMAND	170.0625	167.9	162.4375	167.9	A	COMMAND 11- LOCATED ON FAIRVIEW LOOKOUT	
	12	TACTICAL	TAC 12	ROAD MAINTENANCE	168.2500	167.9	168.2500	167.9	A	ROAD MAINTENANCE TACTICAL	
	13	AIR TO GROUND	A/G PRI S	AIR TO GROUND PRIMARY	167.1500	NONE	167.1500	NONE	A	AIR TO GROUND OPERATIONS, PRIMARY SOUTH	
	14	AIR TO GROUND	A/G SEC S	AIR TO GROUND SECONDARY	170.2625	NONE	170.2625	NONE	A	AIR TO GROUND OPERATIONS, SECONDARY SOUTH	
	15	AIR TO GROUND	MMED29	MEDICAL	155.3475	156.7	155.3475	156.7	A	MEDICAL USE ONLY	
	16	AIR GUARD	AIR GUARD	ALL DIVS	168.6250	NONE	168.6250	110.9	A	EMERGENCY USE ONLY	

5. Special Instructions:		
6. Prepared By (Communications Unit Leader)		Signature: <i>Barry Mathias</i>
Communications staffed 0600-2200 hours. Phone: (949) 648-1591		Date/Time: 09/21/23 16:30 HRS

Finance Email:

- 2023.dinner.finance@firenet.gov
- 2023.chilcoot.finance@firenet.gov

FINANCE CHECK IN:

- 2023.dinner.finance@firenet.gov
- 2023.chilcoot.finance@firenet.gov



Finance can be reached at:

Contractors: 971-713-0374; Overhead: 971-727-5250

COMP/CLAIMS – 971-245-0248

Agency Overhead	Agency AD's / EFF's	Agency Crews	Contract Crews / Equipment	Cooperators
Resource Orders (RO)	Resource Orders (RO)	Resource Orders (RO)	Resource Orders (RO)	Resource Orders (RO)
Signed CTR	Casual Hire Form	Manifest	Manifest	Agreement
	Signed CTR	Signed CTR	Agreement	Signed Shift Ticket / CTR
			Inspections	
			Signed Shift Ticket / CTR	

Tip on a Complete CTR / Shift Ticket:

- Resource Order Number
- Correct dates and work time
- Total hours added for each day
- Signed by Division or above (Include O-# by signed official)
- Justification are required for all:
 - Hazard Pay – Hazard for fighting uncontrolled fire on fireline.
 - Excessive shifts (Example: air travel to incident, burnout operations, initial attack)
 - No meal break shown

NOTE: ON THE TOP OF YOUR CTR OR SHIFT TICKET, PLEASE INDICATE THE FIRE YOU WERE ORDERED ON. ADD IN REMARKS SECTION ON CTR OR SHIFT TICKET, THE "FIRE NAME" THAT YOU WORKED ON.



Do you or the public need to reach the PIOs?

Phone: (541) 900-5862

Emails:

Brice Creek/Dinner/Grizzly: 2023.dinner@firenet.gov

Chilcoot/Ridge: 2023.chilcoot@firenet.gov

Please email us your photos! (And don't forget your PPE 😊)



Chilcoot Fire Information



Brice and Grizzly Fires Information

Scan the codes above to access links to each of the official sources of information on all five of the Umpqua Fires—from InciWeb to Facebook to email addresses, it's all there!



Mail: Expecting mail that hasn't arrived yet? Please swing by the Strader or Sharps PIO shop and provide us with forwarding instructions prior to demob.

Where to send your mail?

Strader and Sharps Creek resources should have all mail sent to the North Umpqua Ranger District

Address your mail to:

C/O (Chilcoot Fire, Your Name, Crew/RO Number, Phone Number)
North Umpqua Ranger District
18782 North Umpqua Highway
Glide, OR 97443

Strader Pickup:

PIOs are checking mail daily; come visit our PIO trailer to get your items!

If you have **already had mail shipped to the Dorena Post Office, pick up notes are as follows:**

- Persons picking up the mail must present ID for their mail.
- Business hours:
 - 9 AM- 1 PM Monday -Friday
 - 11 AM- 12 PM Saturday
 - Closed Sunday

Please do **not have additional mail sent to the Dorena Post Office; send to Umpqua Ranger District**



**Call or visit us if you've lost something!
We have PIO shops at Strader and Sharps Creek.**

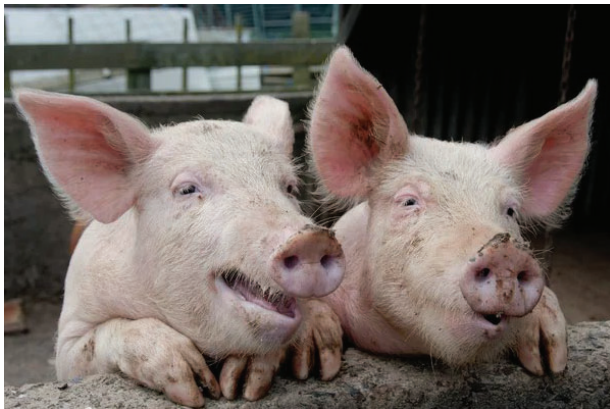


Human Resource Message

Umpqua Fires September 21, 2023

Laughter is good for your health.

- Laughter relaxes the whole body.
- Laughter boosts the immune system.
- Laughter triggers the release of endorphins, the body's natural feel-good chemicals.
- Laughter protects the heart.



Be respectful and laugh with each other and not at each other. Use appropriate humor and find joy in the day!

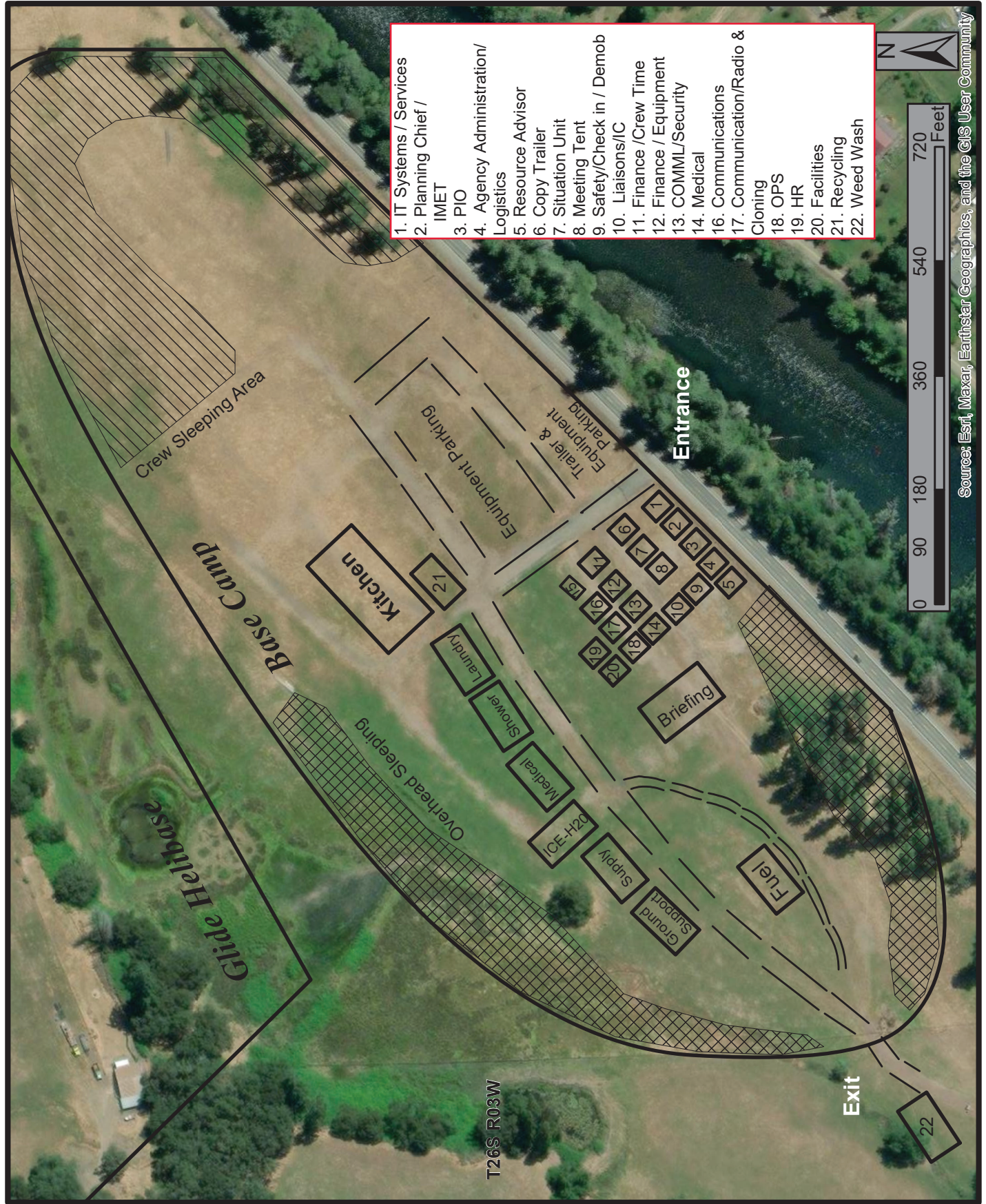
You can reach me by text or phone call at 503-575-8547. You can visit me in my yurt on the SW side of camp.

Have a safe shift and have a great day!

503-575-8547

Audrey Matsumonji
Human Resource Specialist

Chilcoot ICP Basecamp Map



1. IT Systems / Services
2. Planning Chief / IMET
3. PIO
4. Agency Administration/ Logistics
5. Resource Advisor
6. Copy Trailer
7. Situation Unit
8. Meeting Tent
9. Safety/Check in / Demob
10. Liaisons/IC
11. Finance /Crew Time
12. Finance / Equipment
13. COMML/Security
14. Medical
16. Communications
17. Communication/Radio & Cloning
18. OPS
19. HR
20. Facilities
21. Recycling
22. Weed Wash



Source: Esri, Maxar, Earthstar Geographics, and the GIS User Community

T26S R03W

Extensions and Crew Swaps – NW 6

This is the Team Standard Operating procedure based on national policy

- **Resources may be demobed, regardless of crew status, if it is no longer needed.**
- Contract Crews are generally not extended unless replacement resources are scarce. Crews may swap crew members if needed by utilizing the crew swap form at the QR code below.
- Resources ordered on 'O' numbers cannot swap crew members (exception - some medical resources). These resources can extend depending on availability and needs of the incident. See Plans for a resource extension form.

Contracted Fireline Equipment Crew Swap Procedure

- Contract equipment may stay on the incident until it is no longer needed, a maximum dollar amount is reached, or replacement crew members cannot be provided.
- It is the responsibility of the contract owner to track their crew members and ensure they maintain proper work/rest ratios. The IMT assumes contracted equipment will swap crew members as needed to provide adequate rest for their employees.
- Non-fireline equipment personnel (like hand wash stations) are not tracked other than a current onsite contact.
- If replacement crew members cannot be provided, this must be documented on an ICS-213 and provided to Operations and Plans at least 72 hours prior to the 14th workday. The resource will be demobed after 14 shifts OR an extension form may be completed based on operational need, see Plans for this form.
- Crew swaps **MUST** be tracked through the below QR code form as soon as known, **no later than 1800** on the day prior to the swap. If the new crew member is the primary operator and any information in the IAP is incorrect, correct information **MUST** be provided to the Division Supervisor immediately following the operational briefing/division breakout.
- We prefer all members of a resource swap at once if possible. The crew swap form will need to be filled out for **each individual crew member**.
- Replacement workers must provide proof of current annual training upon request.
- The IMT will NOT track a last workday for these resources in the IAP unless:
 - It was determined to be excess to the needs of the incident and will demob
 - A resource was unable to provide replacement workers and will demob

QR code link to Umpqua Fires FTP page, then find button named **Crew Swap Form**



Please contact Plans after the briefing, at their office at either camp, or at Check-in if you have questions or wish to understand how your last workday/demob date was determined.



CHECK-IN PROCESS - ALL RESOURCES

**Grizzly (OR-UPF-000341) Dinner (OR-UPF-000357) Brice Creek (OR-UPF-000359)
Chilcoot (OR-UPF-000345) Ridge (OR-UPF-000346)**

STEP 1. Scan the QR code to fill out and submit the online check-in form.

- Have your resource order ready as many questions reference it.



STEP 2. Email your MANIFEST (if appropriate) depending on what incident you are assigned to. Include your request number in the subject line (e.g, E-118, O-48).

- If you are assigned to the Grizzly, Dinner or Brice Creek incidents, email to 2023.dinner.checkin@firenet.gov
- If you are assigned to the Chilcoot or Ridge incidents, email to 2023.chilcoot.checkin@firenet.gov

STEP 3. See Finance page of IAP for further instructions on how to check in with finance.

STEP 4. Complete vehicle inspection as instructed in your resource order, including contract inspection as needed.

If you have any issues, please contact Check-in at (208) 891-6286 or by email at 2023.chilcoot.checkin@firenet.gov or 2023.dinner.checkin@firenet.gov

Umpqua Fires

Demob Check-Out Form

Pick up Demob Check-Out form at BRIEFING (IAP) or in PLANS to begin process

RO # _____ Resource Name _____ Fire: _____ Date: _____

Initial

Follow these steps in the order below:

- _____ 1. **Weed Wash** – ALL line resources that went off-road will need to go through a Weed Wash in your specific fire location. **If not needed, proceed to step 2.**
- _____ 2. **Ground support** – Contractors must stop to sign their release inspection. The inspection is optional for agency resources. **Agency resources proceed to step 3.**
- _____ 3. **Supply** – Return any items you checked out. All units must have an initial from SUPPLY confirming all equipment has been returned.
- _____ 4. **Communications** – Return any items you checked out. All units must have an initial from COMMUNICATIONS confirming all radio equipment has been returned.
- _____ 5. **Finance** – Proceed to finance to receive your final timesheet. Having ALL your times turned in and up to date will GREATLY speed up the process.
- _____ 6. **Demob – Final step.** Return completed Demob Check-Out form and any Documentation to Demob/Check-in. Documentation can also be emailed to 2023.chilcoot.docs@firenet.gov. Let Demob know your estimated time of departure, arrival time and destination. You will not be released from the incident with Dispatch until this is completed.

ALL AIR TRAVELERS

Submit your air request 72 hours prior to flight date through the QR code on the IAP Cover. Call 208-891-6286 for any questions or assistance.

NIGHT SHIFT PERSONNEL

All night shift personnel coming off the line will be required to meet work/rest requirements before completing the Demob process.

Demob List for Friday 09/22/2023

DINNER – BRICE CREEK - GRIZZLY FIRES				
C-10000	0800	CRWC	WESTVIEW FORESTRY	DINNER
C-10001	0830	CRWC	NORTH PACIFIC	DINNER
CHILCOOT - RIDGE FIRES				
O-72	0700	RES	REMS BACKCOUNTRY	CHILCOOT
O-238	0815	HEQB	MCGRATH, CHRIS	CHILCOOT
O-240.8	1700	OPBD	NUTLEY, TIM	CHILCOOT
O-235	1800	SEC2	HAMMOND, ANDREW	CHILCOOT

Demob List for Saturday 09/23/2023

DINNER – BRICE CREEK - GRIZZLY FIRES				
E-2	0700	WTS2	RHY-DEM	BRICE
E-18	0730	WTS2	IRELAND BROTHERS	BRICE
O-126	1100	SEC2	DUGGAN, ROBERT	DINNER
O-129	2000	REAF	HANCOCK, JEDIDIAH	DINNER
CHILCOOT – RIDGE FIRES				
E-112	0700	WTS2	HYDROTACTICAL	CHILCOOT
E-178	0715	WTS2	SIMONS	CHILCOOT
E-190	0730	ENG4	J3	CHILCOOT
E-206	0745	WTS2	S5 LAND SERVICES	CHILCOOT
E-175	0800	AMB2	BEST PRACTICE	CHILCOOT
E-188	0830	ENG4	ORUPF E424	CHILCOOT
O-251	0700	SPUL	BYERLY, JON	CHILCOOT
O-293	0730	PIO3	JOHNSON, AMANDA	CHILCOOT
O-142	1800	REAF	DODD, BRADY	CHILCOOT
O-230	1800	RCDM	LAZDA, KARLIS	CHILCOOT

Demob List for Sunday 09/24/2023

DINNER – BRICE CREEK - GRIZZLY FIRES				
C-17	0700	CR2I	VALE SRV #12	BRICE
C-18	0700	CR2I	CENTRAL OREGON #5	BRICE
E-4	0900	MFSU	BISHOP SERVICES	DINNER
CHILCOOT - RIDGE FIRES				
C-47	0700	CR2I	SRV #10	CHILCOOT
C-46	0800	CRWC	WARM SPRINGS #2	CHILCOOT
E-177	0800	DZR2	PARKHURST	CHILCOOT
E-189	0830	ENG4	DIAMOND FIRE	CHILCOOT
E-207	0900	ENG3	OR-UPF-34	CHILCOOT
O-327	0730	TFLD	O'SHELL, LOGAN	CHILCOOT
E-180	0815	STK2	AIKENS, JAMES	CHILCOOT
O-246	0800	MEDL	BELINO, LAURA	CHILCOOT
O-142	1800	REAF	DODD, BRADY	CHILCOOT
O-244	1800	WFA2	TYREE, JIMMY	CHILCOOT

Demob List for Monday 09/25/2023

DINNER – BRICE CREEK - GRIZZLY FIRES				
NO RESOURCES SCHEDULED TO DEMOB				
CHILCOOT - RIDGE FIRES				
C-50	0700	CRW2	GFP	CHILCOOT
C-51	0730	CRW2	JC OROZCO	CHILCOOT
E-183	0700	ENG6	TIMBER TIPPER	CHILCOOT
E-184	0715	ENG6	DIAMOND FIRE	CHILCOOT
E-185	0730	ENG6	GREYBACK	CHILCOOT
E-186	0745	ENG6	FENIX FORESTRY	CHILCOOT
E-187	0800	ENG6	FRANCO	CHILCOOT
E-188	0815	ENG4	OR-UPF	CHILCOOT
E-13	0830	WTS2	SCOTT MARSHALL	CHILCOOT
O-174	0730	EMPF	GIFFORD, GREGGORY	CHILCOOT
O-234	0745	REAF	MILLS, NATALIE	CHILCOOT
O-241	0800	SEC1	HUMPHREY, CHARLES	CHILCOOT

Division/Group Assignment List (ICS 204 WF)
Controlled Unclassified Information//Basic

1. Incident Name:				3.		
UMPQUA FIRES				Branch:	Division/Group	
2. Operational Period: DAY						
Date/Time From: 09/22/2023 0700 FRI		Date/Time To: 09/22/2023 1900 FRI		BRICE CREEK A(C/D)		
4. Operations Personnel						
OPERATIONS CHIEF		DAN MARTIN LARAE GUILLORY (T)		BRANCH DIRECTOR		
SAFETY OFFICERS		ERIC RISDAL SHANE THEALL		DIVISION/GROUP SUPERVISOR DOUG CATES		
5. Resources Assigned this Period						
Strike Team / Task Force / Resource Designator	LWD	Leader	Number Persons	Drop Off PT./Time	Pick Up PT./Time	
O-240.32 SOF2	09/26	AL AUGUSTINE	1	SHARPS CREEK BASE CAMP/0700	SHARPS CREEK BASE CAMP/1900	
O-16 TFLD (T)	09/30	BRIAN WHETSLER	1	SHARPS CREEK BASE CAMP/0700	SHARPS CREEK BASE CAMP/1900	
O-240.69 TFLD (T)	09/25	MICHEAL DAKE	1	SHARPS CREEK BASE CAMP/0700	SHARPS CREEK BASE CAMP/1900	
C-17 CR2I VALE SRV #12	09/23	JULIAN JACOBO	24	SHARPS CREEK BASE CAMP/0700	SHARPS CREEK BASE CAMP/1900	
C-18 CR2I CENTRAL OREGON #05	09/23	NICHOLAS FOEY	20	SHARPS CREEK BASE CAMP/0700	SHARPS CREEK BASE CAMP/1900	
C-55 CRW2 IRON MOUNTAIN	09/29	FRANSCISCO CISNEROS	20	SHARPS CREEK BASE CAMP/0700	SHARPS CREEK BASE CAMP/1900	
E-42 ENG4 METHOW RIVER	09/27	CINDY GAMEROS	3	SHARPS CREEK BASE CAMP /0700	SHARPS CREEK BASE CAMP /1900	
E-25 ENG6 NORTH PACIFIC	09/29	PORFIRIO SERVIN	3	SHARPS CREEP BASE CAMP/0700	SHARPS CREEP BASE CAMP/1900	
E-26 ENG6 FIRST STRIKE	09/28	HOLDEN HILLIKER	3	SHARPS CREEK BASE CAMP/0700	SHARPS CREEK BASE CAMP/1900	
E-18 WTS2 IRELAND BROTHERS	09/22	ADAM FRASER	1	SHARPS CREEK BASE CAMP/0700	SHARPS CREEK BASE CAMP/1900	
E-27 CHP2 ASI ARDEN	10/04	ROCKY KATON	3	SHARPS CREEK BASE CAMP/0700	SHARPS CREEK BASE CAMP/1900	
E-1 VUTV TOP GUN				SHARPS CREEK BASE CAMP/0700	SHARPS CREEK BASE CAMP/1900	
E-16 VUTV TOP GUN				SHARPS CREEK BASE CAMP/0700	SHARPS CREEK BASE CAMP/1900	
8. Division/Group Communication Summary						
Function	Channel	RX Frequency N/W	RX Tone/NAC	TX Frequency N/W	TX Tone/NAC	Mode
TACTICAL	TAC 1	168.0500	167.9	168.0500	167.9	A
COMMAND	CMD 11	170.0625	167.9	162.4375	167.9	A
AIR TO GROUND	A/G PRI N	165.9875		165.9875		A
AIR TO GROUND	A/G SEC N	173.5000		173.5000		A
AIR GUARD	AIR GUARD	168.6250		168.6250	110.9	A
9. Prepared By (Resource Unit Leader)		Approved By (Planning Section Chief)		Date	Time	
JAMES MAHAFFY RESL (T)		KRISANN KOSEL		09/21/2023	2200	

Division/Group Assignment List (ICS 204 WF)
Controlled Unclassified Information//Basic

1. Incident Name:				3.		
UMPQUA FIRES				Branch:	Division/Group	
2. Operational Period: DAY						
Date/Time From: 09/22/2023 0700 FRI		Date/Time To: 09/22/2023 1900 FRI		BRICE CREEK A(C/D)		
4. Operations Personnel						
OPERATIONS CHIEF		DAN MARTIN LARAE GUILLORY (T)		BRANCH DIRECTOR		
SAFETY OFFICERS		ERIC RISDAL SHANE THEALL		DIVISION/GROUP SUPERVISOR DOUG CATES		
5. Resources Assigned this Period						
Strike Team / Task Force / Resource Designator		LWD	Leader	Number Persons	Drop Off PT./Time	Pick Up PT./Time
O-18 FMOD TOMS TIMBER		10/03	TOM CONWAY	2	SHARPS CREEK BASE CAMP/0700	SHARPS CREEK BASE CAMP/1900
O-129 REAF		09/23	JEDIDIAH HANCOCK	1	SHARPS CREEK BASE CAMP/0700	SHARPS CREEK BASE CAMP/1900
O-29 REMS BEYOND THE EDGE (REMS 1)		09/26	JOE DECKER	4	SHARPS CREEK BASE CAMP/0700	SHARPS CREEK BASE CAMP/1900
E-64 AMB2 ROUGH COUNTRY (AMB 5)		10/01	JESSIE EVANS	2	SHARPS CREEK BASE CAMP/0700	SHARPS CREEK BASE CAMP/1900
6. Control Operations/Work Assignments:						
<p>TASK: Continue to hold, secure, and mop-up control lines. Monitor conditions in preparation to implement firing plan in direct areas. Utilize aircraft as necessary to moderate fire behavior. Snag along open roads.</p> <p>PURPOSE: Prevent fire from impacting values at risk, including communities to the west, commercial timberlands and T&E habitat. Provide for firefighter and public safety.</p> <p>END STATE: Fire is kept north of 22 RD, south of the 2216 RD, and east of the 732 RD to protect the values at risk through the remainder of the fire season.</p>						
7. Special Instructions:						
<ul style="list-style-type: none"> Resources assigned to Division A/C will add BRICE CREEK FIRE to all CTR and SHIFT TICKETS, OR-UPF-000359 P6QLJ4. Resources assigned to Division D need to add DINNER FIRE OR-UPF-000357 P6QLJ7 (0615) to your CTR's and SHIFT TICKETS. Ensure signage is adequate at all drop points. Add signage to all major intersections to help with locating drop points. Mop-up and secure edges of two unburned pockets H-19 and H-161 are the nearest helispots for Division A/C. H-41 is the closest helispot for the Division D. 						
8. Division/Group Communication Summary						
Function	Channel	RX Frequency N/W	RX Tone/NAC	TX Frequency N/W	TX Tone/NAC	Mode
TACTICAL	TAC 1	168.0500	167.9	168.0500	167.9	A
COMMAND	CMD 11	170.0625	167.9	162.4375	167.9	A
AIR TO GROUND	A/G PRI N	165.9875		165.9875		A
AIR TO GROUND	A/G SEC N	173.5000		173.5000		A
AIR GUARD	AIR GUARD	168.6250		168.6250	110.9	A
9. Prepared By (Resource Unit Leader)			Approved By (Planning Section Chief)		Date	Time
JAMES MAHAFFY RESL (T)			KRISANN KOSEL		09/21/2023	2200

Division/Group Assignment List (ICS 204 WF)
Controlled Unclassified Information//Basic

1. Incident Name:				3.		
UMPQUA FIRES				Branch:	Division/Group	
2. Operational Period: DAY						
Date/Time From: 09/22/2023 0700 FRI		Date/Time To: 09/22/2023 1900 FRI		GRIZZLY SIZ		
4. Operations Personnel						
OPERATIONS CHIEF		DAN MARTIN LARAE GUILLORY (T)		BRANCH DIRECTOR		
SAFETY OFFICERS		ERIC RISDAL SHANE THEALL		DIVISION/GROUP SUPERVISOR RORY HIETT		
5. Resources Assigned this Period						
Strike Team / Task Force / Resource Designator	LWD	Leader	Number Persons	Drop Off PT./Time	Pick Up PT./Time	
O-240.32 SOF2	09/26	AL AUGUSTINE	1	SHARPS CREEK BASE CAMP/0700	SHARPS CREEK BASE CAMP/1900	
O-265 SOFR	09/26	MICHAEL JOHNSON	1	SHARPS CREEK BASE CAMP/0700	SHARPS CREEK BASE CAMP/1900	
C-9.3 FELB	09/30	TRAVIS PUTNEY	1	SHARPS CREEK BASE CAMP/0700	SHARPS CREEK BASE CAMP/1900	
C-9 CRW1 UNION	09/30	ERIC JORGENSEN	20	SHARPS CREEK BASE CAMP/0700	SHARPS CREEK BASE CAMP/1900	
C-10 CRW1 BAKER RIVER	09/29	SHAWN OTTO	22	SHARPS CREEK BASE CAMP/0700	SHARPS CREEK BASE CAMP/1900	
C-11 CR2I HIGHLANDS	09/30	SETH SCHERTENLEID	21	SHARPS CREEK BASE CAMP/0700	SHARPS CREEK BASE CAMP/1900	
E-2 WTS2 RHY-DEM	09/22	RUSSEL ROBINSON	1	SHARPS CREEK BASE CAMP/0700	SHARPS CREEK BASE CAMP/1900	
E-7 WTS3 PACIFIC RIDGELINE	10/04	ZACH JAFARZADEH	1	SHARPS CREEK BASE CAMP/0700	SHARPS CREEK BASE CAMP/1900	
E-24 DZR2 TOUGH EQUIPMENT	09/25	ROBERT ASCHERIN	2	SHARPS CREEK BASE CAMP/0700	SHARPS CREEK BASE CAMP/1900	
E-13 VUTV KD OUTDOORS LLC				SHARPS CREEK BASE CAMP/0700	SHARPS CREEK BASE CAMP/1900	
E-84 VUTV KWIK RESPONSE				SHARPS CREEK BASE CAMP/0700	SHARPS CREEK BASE CAMP/1900	
E-90 VUTV TOP GUN				SHARPS CREEK BASE CAMP/0700	SHARPS CREEK BASE CAMP/1900	
O-15 FMOD B&M	09/29	NICK BROWNING	2	SHARPS CREEK BASE CAMP/0700	SHARPS CREEK BASE CAMP/1900	
O-129 REAF	09/23	JEDIDIAH HANCOCK	1	SHARPS CREEK BASECAMP/0700	SHARPS CREEK BASECAMP/1900	
8. Division/Group Communication Summary						
Function	Channel	RX Frequency N/W	RX Tone/NAC	TX Frequency N/W	TX Tone/NAC	Mode
TACTICAL	TAC 4	166.7250	167.9	166.7250	167.9	A
COMMAND	CMD 11	170.0625	167.9	162.4375	167.9	A
AIR TO GROUND	A/G PRI N	165.9875		165.9875		A
AIR TO GROUND	A/G SEC N	173.5000		173.5000		A
AIR GUARD	AIR GUARD	168.6250		168.6250	110.9	A
9. Prepared By (Resource Unit Leader)		Approved By (Planning Section Chief)		Date	Time	
JAMES MAHAFFY RESL (T)		KRISANN KOSEL		09/21/2023	2200	

Division/Group Assignment List (ICS 204 WF)
Controlled Unclassified Information//Basic

1. Incident Name:				3.		
UMPQUA FIRES				Branch:	Division/Group	
2. Operational Period: DAY						
Date/Time From: 09/22/2023 0700 FRI		Date/Time To: 09/22/2023 1900 FRI		GRIZZLY SIZ		
4. Operations Personnel						
OPERATIONS CHIEF		DAN MARTIN LARAE GUILLORY (T)		BRANCH DIRECTOR		
SAFETY OFFICERS		ERIC RISDAL SHANE THEALL		DIVISION/GROUP SUPERVISOR RORY HIETT		
5. Resources Assigned this Period						
Strike Team / Task Force / Resource Designator		LWD	Leader	Number Persons	Drop Off PT./Time	Pick Up PT./Time
O-15 REMS REMOTE ACCESS (REMS 3)		10/01	NOLAN HOWELL	4	SHARPS CREEK BASE CAMP/0700	SHARPS CREEK BASE CAMP/1900
O-133 EMPF ADVENTURE MEDICS (MEDIC NELSON)		09/29	RUTH NELSON	1	SHARPS CREEK BASE CAMP/0700	SHARPS CREEK BASE CAMP/1900
6. Control Operations/Work Assignments:						
<p>TASK: Take action on the Grizzly fire using Champion Creek RD to prevent fire spread to the west.</p> <p>PURPOSE: Prevent fire from impacting values at risk, including private residences, communities to the west, historic mining community and infrastructure and commercial timberlands.</p> <p>END STATE: Fire is kept north and west of the 2212 RD, east of the 2473 RD and south of 22 RD, to protect the values at risk through the remainder of fire season. Structures are prepped and secured.</p>						
7. Special Instructions:						
<ul style="list-style-type: none"> All resources assigned to this division need to add Grizzly Fire OR-UPF-000341 P6QL0W (0615) to your CTR's and shift tickets. H-191 is the nearest helispot for Division S/W. 						
8. Division/Group Communication Summary						
Function	Channel	RX Frequency N/W	RX Tone/NAC	TX Frequency N/W	TX Tone/NAC	Mode
TACTICAL	TAC 4	166.7250	167.9	166.7250	167.9	A
COMMAND	CMD 11	170.0625	167.9	162.4375	167.9	A
AIR TO GROUND	A/G PRI N	165.9875		165.9875		A
AIR TO GROUND	A/G SEC N	173.5000		173.5000		A
AIR GUARD	AIR GUARD	168.6250		168.6250	110.9	A
9. Prepared By (Resource Unit Leader)			Approved By (Planning Section Chief)		Date	Time
JAMES MAHAFFY RESL (T)			KRISANN KOSEL		09/21/2023	2200

Division/Group Assignment List (ICS 204 WF)
Controlled Unclassified Information//Basic

1. Incident Name:			3.			
UMPQUA FIRES			Branch:		Division/Group	
2. Operational Period: DAY			GRIZZLY NIGHT			
Date/Time From: 09/22/2023 0700 FRI		Date/Time To: 09/22/2023 1900 FRI				
4. Operations Personnel						
SAFETY OFFICERS				OPERATIONS CHIEF DAN MARTIN LARAE GUILLORY (T)		
BRANCH DIRECTOR				DIVISION/GROUP SUPERVISOR		
5. Resources Assigned this Period						
Strike Team / Task Force / Resource Designator		LWD	Leader	Number Persons	Drop Off PT./Time	Pick Up PT./Time
O-11 WFM WARM SPRINGS		09/29	JOSHUA SOHAPPY	7	SHARPS CREEK BASE CAMP/1900	SHARPS CREEK BASE CAMP/0700
E-63 AMB2 WILDERNESS MEDICS (AMBO 4)		09/26	MATT ROTH	2	SHARPS CREEK BASE CAMP/1900	SHARPS CREEK BASE CAMP/0700
6. Control Operations/Work Assignments:						
<p>TASK: Assess need to take action on the Grizzly fire using pre-identified actions as defined in the management action points.</p> <p>PURCHASE: Prevent fire from impacting values at risk, including private residences, communities to the west, historic mining community and infrastructure and commercial timberlands.</p> <p>END STATE: Fire is kept east of Channel Creek, to protect the values at risk through the remainder of fire season. Structures are prepped and secured.</p>						
7. Special Instructions:						
<ul style="list-style-type: none"> All resources assigned to this division need to add Grizzly Fire OR-UPF-000341 P6QL0W (0615) to your CTR's and shift tickets. H-191 is the nearest helispot for Division S/Z. 						
8. Division/Group Communication Summary						
Function	Channel	RX Frequency N/W	RX Tone/NAC	TX Frequency N/W	TX Tone/NAC	Mode
TACTICAL	TAC 4	166.7250	167.9	166.7250	167.9	A
COMMAND	CMD 11	170.0625	167.9	162.4375	167.9	A
AIR TO GROUND	A/G PRI N	165.9875		165.9875		A
AIR TO GROUND	A/G SEC N	173.5000		173.5000		A
AIR GUARD	AIR GUARD	168.6250		168.6250	110.9	A
9. Prepared By (Resource Unit Leader)			Approved By (Planning Section Chief)		Date	Time
JAMES MAHAFFY			KRISANN KOSEL		09/21/2023	2200

Division/Group Assignment List (ICS 204 WF)
Controlled Unclassified Information//Basic

1. Incident Name:			3.			
UMPQUA FIRES			Branch:		Division/Group	
2. Operational Period: 0700 - 1900					CHILCOOT E/W	
Date/Time From: 09/22/2023 0700 FRI		Date/Time To: 09/22/2023 1900 FRI				
4. Operations Personnel						
OPERATIONS CHIEF		DAN MARTIN LARAE GUILLORY (T)		SAFETY OFFICERS		ERIC RISDAL SHANE THEALL
BRANCH DIRECTOR				DIVISION/GROUP SUPERVISOR		NICK PETERS
5. Resources Assigned this Period						
Strike Team / Task Force / Resource Designator		LWD	Leader	Number Persons	Drop Off PT./Time	Pick Up PT./Time
O-314 TFLD		09/28	TOM SCHOENFELDER	1	STRADER ICP/0700	STRADER ICP/1900
O-319 TFLD		10/02	TODD MIRANDA	1	STRADER ICP/0700	STRADER ICP/1900
O-240.71 TFLD (T)		09/25	MEGAN HURRELL	1	STRADER ICP/0700	STRADER ICP/1900
C-47 CR2I SRV #10		09/23	ANDRES HERNADEZ	25	STRADER ICP/0700	STRADER ICP/1900
E-4 ENG4 TORRES 5		10/02	HARLEY MEAD	3	STRADER ICP/0700	STRADER ICP/1900
E-188 ENG4 ORUPF E424		09/22	JEFF CASE	5	STRADER ICP/0700	STRADER ICP/1900
E-183 ENG6 TIMBER TIPPER		09/24	KEITH REID	3	STRADER ICP/0700	STRADER ICP/1900
E-185 ENG6 GRAYBACK E25		09/24	ARIC PAUL	3	STRADER ICP/0700	STRADER ICP/1900
E-186 ENG6 FENIX		09/24	SUZANNE FLYNN	3	STRADER ICP/0700	STRADER ICP/1900
E-112 WTT1 HYDROTACTICAL		09/22	DANIEL WARNER	2	STRADER ICP/0700	STRADER ICP/1900
E-178 WTS2 SIMONS		09/22	MATTHEW HOLMES	1	STRADER ICP/0700	STRADER ICP/1900
O- ARCH			BRIAN RHOTEN	1	STRADER ICP/0700	STRADER ICP/1900
O-142 REAF		09/24	BRADY DODD	1	STRADER ICP/0700	STRADER ICP/1900
8. Division/Group Communication Summary						
Function	Channel	RX Frequency N/W	RX Tone/NAC	TX Frequency N/W	TX Tone/NAC	Mode
TACTICAL	TAC 2	168.2000	167.9	168.2000	167.9	A
COMMAND	CMD 9	173.6000	167.9	169.4625	167.9	A
COMMAND	CMD 10	169.8375	167.9	162.4625	167.9	A
AIR TO GROUND	A/G PRI S	167.1500		167.1500		A
AIR TO GROUND	A/G SEC S	170.2625		170.2625		A
AIR GUARD	AIR GUARD	168.6250		168.6250	110.9	A
9. Prepared By (Resource Unit Leader)			Approved By (Planning Section Chief)		Date	Time
STEPHANIE FALCON			KRISANN KOSEL		09/21/2023	2200

Division/Group Assignment List (ICS 204 WF)
Controlled Unclassified Information//Basic

1. Incident Name:			3.			
UMPQUA FIRES			Branch:		Division/Group	
2. Operational Period: 0700 - 1900			CHILCOOT E/W			
Date/Time From: 09/22/2023 0700 FRI		Date/Time To: 09/22/2023 1900 FRI				
4. Operations Personnel						
OPERATIONS CHIEF		DAN MARTIN LARAE GUILLORY (T)		SAFETY OFFICERS		ERIC RISDAL SHANE THEALL
BRANCH DIRECTOR				DIVISION/GROUP SUPERVISOR		NICK PETERS
5. Resources Assigned this Period						
Strike Team / Task Force / Resource Designator		LWD	Leader	Number Persons	Drop Off PT./Time	Pick Up PT./Time
O-72 REMS BACKCOUNTRY RESCUE (REMS 11)		09/23	ROBERT MORELLO	4	STRADER ICP/0700	STRADER ICP/1900
E-175 AMB2 BEST PRACTICE (AMB 44)		09/22	DEVIN BEST	2	STRADER ICP/0700	STRADER ICP/1900
6. Control Operations/Work Assignments:						
<p>TASK: Patrol and mop-up any threats to containment line within the division. Chip any remaining debris piles along the 3806, 400, and 3809 roads. Grade and roll 3809 road from the 3806 intersection to the 38 road intersection.</p> <p>PURPOSE: Prevent additional fire growth and repair and damage caused by suppression efforts.</p> <p>END STATE: Fire is contained west of 3806 road and 370 road.</p>						
7. Special Instructions:						
<ul style="list-style-type: none"> Utilize Chilcoot repeater. Mitigate snag hazard and implement the risk management process in tactical decisions. Support tactics that minimize impacts to private property. Avoid waterways with retardant applications and reduce impact to Salmon/Steelhead protected populations. Ensure signage is adequate to all drop points. Add signage at all major intersections to help with locating drop points. Resources assigned to this Division E should put OR-UPF-000345 Chilcoot P6QLF5 (0615) on all CTR's and shift tickets. Resources assigned to this Division W should put OR-UPF-000346 P6QLF4 (0615) on the bottom of CTR's and shift tickets. H-57 is the nearest helispot for Division E. H-291 is the nearest helispot for Division W. 						
8. Division/Group Communication Summary						
Function	Channel	RX Frequency N/W	RX Tone/NAC	TX Frequency N/W	TX Tone/NAC	Mode
TACTICAL	TAC 2	168.2000	167.9	168.2000	167.9	A
COMMAND	CMD 9	173.6000	167.9	169.4625	167.9	A
COMMAND	CMD 10	169.8375	167.9	162.4625	167.9	A
AIR TO GROUND	A/G PRI S	167.1500		167.1500		A
AIR TO GROUND	A/G SEC S	170.2625		170.2625		A
AIR GUARD	AIR GUARD	168.6250		168.6250	110.9	A
9. Prepared By (Resource Unit Leader)			Approved By (Planning Section Chief)		Date	Time
STEPHANIE FALCON			KRISANN KOSEL		09/21/2023	2200

Division/Group Assignment List (ICS 204 WF)
Controlled Unclassified Information//Basic

1. Incident Name:			3.			
UMPQUA FIRES			Branch:		Division/Group	
2. Operational Period: 0700 - 1900			CHILCOOT H			
Date/Time From: 09/22/2023 0700 FRI		Date/Time To: 09/22/2023 1900 FRI				
4. Operations Personnel						
OPERATIONS CHIEF		DAN MARTIN LARAE GUILLORY (T)		SAFETY OFFICERS		ERIC RISDAL SHANE THEALL
BRANCH DIRECTOR				DIVISION/GROUP SUPERVISOR		JON MILES
5. Resources Assigned this Period						
Strike Team / Task Force / Resource Designator		LWD	Leader	Number Persons	Drop Off PT./Time	Pick Up PT./Time
E-190 ENG4 J3		09/23	JOSE ARIZMENDI	3	STRADER ICP/0700	STRADER ICP/1900
E-184 ENG6 DIAMOND FIRE		09/24	NICHOLAS KING	3	STRADER ICP/0700	STRADER ICP/1900
E-187 ENG6 FRANCO		09/24	REBECCA PICKERING	3	STRADER ICP/0700	STRADER ICP/1900
E-199 WTT1 NEVADA FORESTRY NDF-5181		09/29	JERRY SIMPSON	2	STRADER ICP/0700	STRADER ICP/1900
O-174 EMPF (MEDIC GIFFORD)		09/24	GREGGORY GIFFORD	1	STRADER ICP/0700	STRADER ICP/1900
6. Control Operations/Work Assignments:						
<p>TASK: Continue mop-up and securing along Hipower Creek. Continue lining and securing the fire edge at the head of Hipower creek. Monitor conditions and develop options as needed to burn out areas of dirty burn/ indirect line on the north edge of the fire near Hipower Creek.</p> <p>PURPOSE: To prevent fire from impacting values, such as nearby communities, private timberland, and critical infrastructure by limiting fire spread.</p> <p>END STATE: Fire is contained along existing fireline in Hipower creek, and south of the ridge line above the head of Hipower Creek.</p>						
7. Special Instructions:						
<ul style="list-style-type: none"> Mitigate aerial hazards, both standing live and snag trees. Survey work areas and implement the risk management process in all tactical decisions. Support tactics that minimize impacts to private timber and property. Avoid waterways with retardant applications and use screens to reduce impact to salmon/steelhead protected populations. All resources assigned to this division need to put OR-UPF-000345 P6QLF5 (0615) on their CTR's and shift tickets. H-1 is the nearest helispot for Division H. 						
8. Division/Group Communication Summary						
Function	Channel	RX Frequency N/W	RX Tone/NAC	TX Frequency N/W	TX Tone/NAC	Mode
TACTICAL	TAC 1	168.0500	167.9	168.0500	167.9	A
COMMAND	CMD 8	173.7125	167.9	162.6000	167.9	A
COMMAND	CMD 9	173.6000	167.9	169.4625	167.9	A
AIR TO GROUND	A/G PRI S	167.1500		167.1500		A
AIR TO GROUND	A/G SEC S	170.2625		170.2625		A
AIR GUARD	AIR GUARD	168.6250		168.6250	110.9	A
9. Prepared By (Resource Unit Leader)			Approved By (Planning Section Chief)		Date	Time
STEPHANIE FALCON			KRISANN KOSEL		09/21/2023	2200

Division/Group Assignment List (ICS 204 WF)
Controlled Unclassified Information//Basic

1. Incident Name:				3.		
UMPQUA FIRES				Branch:	Division/Group CHILCOOT J	
2. Operational Period: 0700 - 1900						
Date/Time From: 09/22/2023 0700 FRI		Date/Time To: 09/22/2023 1900 FRI				
4. Operations Personnel						
OPERATIONS CHIEF		DAN MARTIN LARAE GUILLORY (T)		SAFETY OFFICERS		ERIC RISDAL SHANE THEALL
BRANCH DIRECTOR				DIVISION/GROUP SUPERVISOR		DAN COTHREN
5. Resources Assigned this Period						
Strike Team / Task Force / Resource Designator		LWD	Leader	Number Persons	Drop Off PT./Time	Pick Up PT./Time
O-13 TFLD		09/28	JEREMY BRYANT	1	STRADER ICP/0700	STRADER ICP/1900
O-327 TFLD (T)		09/23	LOGAN O'SHELL	1	STRADER ICP/0700	STRADER ICP/1900
O-291 HEQB		09/29	BRIAN GENTIS	1	STRADER ICP/0700	STRADER ICP/1900
O-292 HEQB (T)		09/29	GARRETT GIBBS	1	STRADER ICP/0700	STRADER ICP/1900
C-49 CRW1 HELENA IHC		09/26	TIGHE STOYANOFF	25	STRADER ICP/0700	STRADER ICP/1900
C-53 CR2I WENATCHEE RIVER		09/26	BRIAN FLATTEN	18	STRADER ICP/0700	STRADER ICP/1900
C-52 CRW2 PACIFIC OASIS C-2		09/28	ALEX HESS	20	STRADER ICP/0700	STRADER ICP/1900
C-54 CRW2 PACIFIC OASIS		09/30	DONTE MARQUEZ	20	STRADER ICP/0700	STRADER ICP/1900
E-207 ENG3 ORUPF 34		09/23	VICENTE IRANZO	8	STRADER ICP/0700	STRADER ICP/1900
E-189 ENG4 DIAMOND FIRE		09/23	DEAN WILSON	3	STRADER ICP/0700	STRADER ICP/1900
E-208 ENG6 OREGON WOODS		10/02	CHARLES PERKINS	3	STRADER ICP/0700	STRADER ICP/1900
E-13 WTS2 SCOTT MARSHALL		09/24	JUSTIN WEAVER	1	STRADER ICP/0700	STRADER ICP/1900
E-173 WTS2 SCOTT MARSHALL		10/01	RICHARD JOHNSON	1	STRADER ICP/0700	STRADER ICP/1900
E-205 WTS2 WESTERN FIRES		10/01	RICHARD DAUGHERTY	1	STRADER ICP/0700	STRADER ICP/1900
E-206 WTS2 S5		09/22	CHRISTOPHER HARDING	1	STRADER ICP/0700	STRADER ICP/1900
8. Division/Group Communication Summary						
Function	Channel	RX Frequency N/W	RX Tone/NAC	TX Frequency N/W	TX Tone/NAC	Mode
TACTICAL	TAC 3	168.6000	167.9	168.6000	167.9	A
COMMAND	CMD 9	173.6000	167.9	169.4625	167.9	A
COMMAND	CMD 10	169.8375	167.9	162.4625	167.9	A
AIR TO GROUND	A/G PRI S	167.1500		167.1500		A
AIR TO GROUND	A/G SEC S	170.2625		170.2625		A
AIR GUARD	AIR GUARD	168.6250		168.6250	110.9	A
9. Prepared By (Resource Unit Leader)			Approved By (Planning Section Chief)		Date	Time
STEPHANIE FALCON			KRISANN KOSEL		09/21/2023	2200

Division/Group Assignment List (ICS 204 WF)
Controlled Unclassified Information//Basic

1. Incident Name:				3.			
UMPQUA FIRES				Branch:		Division/Group	
2. Operational Period: 0700 - 1900						CHILCOOT J	
Date/Time From: 09/22/2023 0700 FRI		Date/Time To: 09/22/2023 1900 FRI					
4. Operations Personnel							
OPERATIONS CHIEF		DAN MARTIN LARAE GUILLORY (T)		SAFETY OFFICERS		ERIC RISDAL SHANE THEALL	
BRANCH DIRECTOR				DIVISION/GROUP SUPERVISOR		DAN COTHREN	
5. Resources Assigned this Period							
Strike Team / Task Force / Resource Designator		LWD	Leader	Number Persons	Drop Off PT./Time	Pick Up PT./Time	
E-136 UTV					STRADER ICP/0700	STRADER ICP/1900	
E-137 UTV					STRADER ICP/0700	STRADER ICP/1900	
O- ARCH			BRIAN RHOTEN	1	STRADER ICP/0700	STRADER ICP/1900	
O-142 REAF		09/24	BRADY DODD	1	STRADER ICP/0700	STRADER ICP/1900	
O-234 REAF		09/24	NATALIE MILLS	1	STRADER ICP/0700	STRADER ICP/1900	
O-237 REAF (T)		09/25	ELIZABETH DAY	1	STRADER ICP/0700	STRADER ICP/1900	
O-332 EMPF ANGELA CISNEROS THORSVOLD		10/04	ANGELA CISNEROS- THORSVOLD	1	STRADER ICP/0700	STRADER ICP/1900	
E-142 AMB2 CARDINAL MEDICAL SOULTIONS (MED MOD 1)		09/23	CHARLES CARLSON	2	STRADER ICP/0700	STRADER ICP/1900	
E-193 AMB2 FRONT LINE (AMB 55)		09/28	LANCE PUIG	2	STRADER ICP/0700	STRADER ICP/1900	
8. Division/Group Communication Summary							
Function	Channel	RX Frequency N/W	RX Tone/NAC	TX Frequency N/W	TX Tone/NAC	Mode	
TACTICAL	TAC 3	168.6000	167.9	168.6000	167.9	A	
COMMAND	CMD 9	173.6000	167.9	169.4625	167.9	A	
COMMAND	CMD 10	169.8375	167.9	162.4625	167.9	A	
AIR TO GROUND	A/G PRI S	167.1500		167.1500		A	
AIR TO GROUND	A/G SEC S	170.2625		170.2625		A	
AIR GUARD	AIR GUARD	168.6250		168.6250	110.9	A	
9. Prepared By (Resource Unit Leader)			Approved By (Planning Section Chief)			Date	Time
STEPHANIE FALCON			KRISANN KOSEL			09/21/2023	2200

Division/Group Assignment List (ICS 204 WF)

Controlled Unclassified Information//Basic

1. Incident Name:		3.				
UMPQUA FIRES		Branch:	Division/Group CHILCOOT J			
2. Operational Period: 0700 - 1900						
Date/Time From: 09/22/2023 0700 FRI	Date/Time To: 09/22/2023 1900 FRI					
4. Operations Personnel						
OPERATIONS CHIEF	DAN MARTIN LARAE GUILLORY (T)	SAFETY OFFICERS	ERIC RISDAL SHANE THEALL			
BRANCH DIRECTOR		DIVISION/GROUP SUPERVISOR	DAN COTHREN			
5. Resources Assigned this Period						
Strike Team / Task Force / Resource Designator	LWD	Leader	Number Persons	Drop Off PT./Time	Pick Up PT./Time	
6. Control Operations/Work Assignments:						
<p>TASK: Continue to take action to secure fire from the southwest corner of Hipower Creek to the 3803 RD. Complete fireline preparation on the indirect line off the 3803 RD. Monitor conditions and continue preparation for implementing firing plan in indirect areas.</p> <p>PURPOSE: To prevent fire from impacting nearby communities, private timberland, and critical infrastructure by limiting fire spread.</p> <p>END STATE: Fire is contained east of the forest boundary, west of the Hipower Bluffs and north of the indirect line connected to the 3803 RD.</p>						
7. Special Instructions:						
<ul style="list-style-type: none"> • Survey and mitigate aerial hazards including live trees and snags as needed. Implementing risk management process in all tactical decisions, utilize tactics that minimize impacts to private property. Avoid waterways with retardant. Use screens to reduce impact on salmon/ steelhead protected populations. • Ensure signage is adequate at all drop points. Add signage at all major intersections to help with locating drop zones. • All resources assigned to this Division need to put OR-UPF 000345 P6QLF5 (0615) on all CTR's and shift tickets. 						
8. Division/Group Communication Summary						
Function	Channel	RX Frequency N/W	RX Tone/NAC	TX Frequency N/W	TX Tone/NAC	Mode
TACTICAL	TAC 3	168.6000	167.9	168.6000	167.9	A
COMMAND	CMD 9	173.6000	167.9	169.4625	167.9	A
COMMAND	CMD 10	169.8375	167.9	162.4625	167.9	A
AIR TO GROUND	A/G PRI S	167.1500		167.1500		A
AIR TO GROUND	A/G SEC S	170.2625		170.2625		A
AIR GUARD	AIR GUARD	168.6250		168.6250	110.9	A
9. Prepared By (Resource Unit Leader)		Approved By (Planning Section Chief)		Date	Time	
STEPHANIE FALCON		KRISANN KOSEL		09/21/2023	2200	

Division/Group Assignment List (ICS 204 WF)
Controlled Unclassified Information//Basic

1. Incident Name:			3.			
UMPQUA FIRES			Branch:		Division/Group	
2. Operational Period: 0700 - 1900			SUPPRESSION REPAIR GROUP			
Date/Time From: 09/22/2023 0700 FRI		Date/Time To: 09/22/2023 1900 FRI				
4. Operations Personnel						
SAFETY OFFICERS		ERIC RISDAL SHANE THEALL		OPERATIONS CHIEF		DAN MARTIN LARAE GUILLORY (T)
BRANCH DIRECTOR				DIVISION/GROUP SUPERVISOR		LOGAN LAWSON JAMIE SCHNICK (T)
5. Resources Assigned this Period						
Strike Team / Task Force / Resource Designator		LWD	Leader	Number Persons	Drop Off PT./Time	Pick Up PT./Time
O-14 HEQB		09/29	ETHAN REDDIC	1	STRADER ICP/0700	STRADER ICP/1900
O-323 HEQB		10/04	WILLIAM ADDISON	1	STRADER ICP/0700	STRADER ICP/1900
C-50 CRW2 GFP		09/24	JESSE SZABO	20	STRADER ICP/0700	STRADER ICP/1900
C-51 CRW2 J.C. OROZCO REFORESTATION		09/24	CHRIS OROZCO	20	STRADER ICP/0700	STRADER ICP/1900
E-137 WTS2 ON THE GO H2O		09/29	TIM SCHMIDT	1	STRADER ICP/0700	STRADER ICP/1900
E-138 WTS2 COWBOY FIRE		10/03	JEFF MOODY	1	STRADER ICP/0700	STRADER ICP/1900
E-200 WTS2 M & M		09/30	MARK CSERNAK	1	STRADER ICP/0700	STRADER ICP/1900
E-114 EXC2 SCOTT MARSHALL		09/24	SCOTT MARSHALL	2	STRADER ICP/0700	STRADER ICP/1900
E-108 EXC3 MARK JONES		10/04	ETHAN WILDING	2	STRADER ICP/0700	STRADER ICP/1900
E-107 EXC4 CARBON WORKS		10/05	BRANDON WILSON	2	STRADER ICP/0700	STRADER ICP/1900
E-6 GRD1 MARK JONES		09/26	MARK JONES	2	STRADER ICP/0700	STRADER ICP/1900
E-12 VROL MARK JONES		10/03	RILEY LOONEY	1	STRADER ICP/0700	STRADER ICP/1900
8. Division/Group Communication Summary						
Function	Channel	RX Frequency N/W	RX Tone/NAC	TX Frequency N/W	TX Tone/NAC	Mode
TACTICAL	TAC 1	168.0500	167.9	168.0500	167.9	A
COMMAND	CMD 9	173.6000	167.9	169.4625	167.9	A
COMMAND	CMD 10	169.8375	167.9	162.4625	167.9	A
AIR TO GROUND	A/G PRI S	167.1500		167.1500		A
AIR TO GROUND	A/G SEC S	170.2625		170.2625		A
AIR GUARD	AIR GUARD	168.6250		168.6250	110.9	A
9. Prepared By (Resource Unit Leader)			Approved By (Planning Section Chief)		Date	Time
STEPHANIE FALCON			KRISANN KOSEL		09/21/2023	2200

Division/Group Assignment List (ICS 204 WF)
Controlled Unclassified Information//Basic

1. Incident Name:		3.				
UMPQUA FIRES		Branch:		Division/Group SUPPRESSION REPAIR GROUP		
2. Operational Period: 0700 - 1900						
Date/Time From: 09/22/2023 0700 FRI	Date/Time To: 09/22/2023 1900 FRI					
4. Operations Personnel						
SAFETY OFFICERS ERIC RISDAL SHANE THEALL		OPERATIONS CHIEF DAN MARTIN LARAE GUILLORY (T)				
BRANCH DIRECTOR		DIVISION/GROUP SUPERVISOR LOGAN LAWSON JAMIE SCHNICK (T)				
5. Resources Assigned this Period						
Strike Team / Task Force / Resource Designator	LWD	Leader	Number Persons	Drop Off PT./Time	Pick Up PT./Time	
6. Control Operations/Work Assignments:						
<p>TASK: Repair all control lines identified by REAF's and record repairs in Field Maps. PURPOSE: Reduce future erosion to protect critical salmon and steelhead habitat. END STATE: All identified control lines repaired and inspected by REAF's.</p>						
7. Special Instructions:						
<p><i>Record what fire you are working on. Charge the full day to the fire your shift starts on.</i> <i>Chilcoot Fire-OR-UPF 000345 P6QLF5 (0615)</i> <i>Ridge Fire OR-UPF-000346 P6QLF4 (0615)</i> <i>Grizzly Fire OR-UPF-000341 P6QL0W (0615)</i> <i>BRICE CREEK FIRE OR-UPF-000359 P6QLJ4.</i> <i>DINNER FIRE OR-UPF-000357 P6QLJ7 (0615)</i></p>						
8. Division/Group Communication Summary						
Function	Channel	RX Frequency N/W	RX Tone/NAC	TX Frequency N/W	TX Tone/NAC	Mode
TACTICAL	TAC 1	168.0500	167.9	168.0500	167.9	A
COMMAND	CMD 9	173.6000	167.9	169.4625	167.9	A
COMMAND	CMD 10	169.8375	167.9	162.4625	167.9	A
AIR TO GROUND	A/G PRI S	167.1500		167.1500		A
AIR TO GROUND	A/G SEC S	170.2625		170.2625		A
AIR GUARD	AIR GUARD	168.6250		168.6250	110.9	A
9. Prepared By (Resource Unit Leader)		Approved By (Planning Section Chief)			Date	Time
STEPHANIE FALCON		KRISANN KOSEL			09/21/2023	2200

IWI Procedures

Fire Line

1. Request closest EMT/Medic to the injured person and report to DIV Supervisor.
2. Contact **Chilcoot Communications** and declare a “Red medical” (critical), “Yellow medical” (serious), or “Green medical” (minor). Request emergency radio traffic if needed.
3. Give location of patient and best access for initial responders.
4. Describe injury(s): Are they bleeding? How much? Are they conscious? Can they talk? Do they know what’s going on? How many people are hurt.
5. Gather information for MIR and relay to dispatch as soon as practical (see MIR back page)

Sharps Basecamp

1. Life threatening emergency, call 911
2. Call Chilcoot Communications on Command or 949-648-1591
3. Contact (go to) the medical tent.
4. Call the medical tent 310-780-4296

Strader ICP

1. Life threatening emergency, call 911
2. Call Chilcoot Communications on Command or 949-648-1591
3. Non-life-threatening go to blue medical trailer located between lunch trailer and laundry trailer



If you are out on the line and not able to wash your hands, the Supply Unit has hand sanitizer!!!

MEDICAL PLAN (ICS 206 WF)

Controlled unclassified Information Basic

1. Incident/Project Name			2. Operational Period					
Umpqua Fires (Dinner, Brice Creek & Chilcoot)			Date/Time		9/22/2023 - 9/23/2023, 0600 - 0600			
3. Ambulance Services								
Name	Complete Address		Phone & EMS Frequency		Advanced Life Support			
					Yes	No		
South Lane Fire & Rescue	233 E. Harrison Ave, Cottage Grove, OR		Command Channel/911(Backup)		X			
Umpqua Valley Ambulance	1290 NE Cedar St. Roseburg OR		Command Channel/911 (backup)		X			
4. Air Ambulance Services								
Name			Phone		Type of Aircraft and Capability			
Commercial Air Ambulance			911 / 541-344-2211		Closest available based on availability			
Teton, N38HX			541-957-3325		Short Haul, Day time use only			
Yellowstone N234BH			541-957-3325		Short Haul Capable (Grants Pass OR)			
Name Address	GPS Datum – WGS 84		Travel Time		Phone	Helipad		Level of Care
			Air	Gnd		Yes	No	
Mercy Medical Center	Lat: N 43° 14.567'		30 min	1 hr	(541) 673-0611	X		Level III Trauma
2700 NW Stewart Pkwy	Long: W 123° 21.983'							
Roseburg, OR	VHF:							
PeaceHealth Cottage Grove Community MC	Lat: N 43° 48.2292'		15 min	30 Min	(541) 942-6646	X		Non Trauma
1515 Village Dr	Long: W 123° 2.3801'							
Cottage Grove, OR	VHF:							
Sacred Heart MC Riverbend	Lat: N 44° 04.876'		30 min	1 hr	(541) 222-6929	X		Level II Trauma
3333 Riverbend Dr.	Long: W 123° 01.588							
Springfield, OR 97477	VHF:							
McKenzie-Willamette MC	Lat: N 44° 03.217'		30 min	1 hr	(541) 726-4580	X		Level III
1460 G St	Long: W 123° 00.219'							
Springfield, OR 97477	VHF:							
Legacy Emanuel	Lat: N 45°32.66'		1 hr	2 hr 30 min	(503) 413-2285	X		Level I / Burn Center
2801 N Gantenbein Ave	Long: W 122° 40.18'							
Portland OR 97227	VHF:							
6. Branch/Div/Group		Area Location Capability						
Sharps Creek Base Camp		O-210 MEDL Nokes, O-106 MEDL(t) Field E-105 AMBU 6 - Barto						
DIV S/Z (Grizzly)		O-15 REMS 3 - Howell, O-133 MEDIC Nelson (Responding Ambu. is AMBU 5)						
DIV A/C/D (Brice Creek)		O-29 REMS 1- Decker, E-64 AMBU 5 - Evans (Responding Ambu. to Dinner Fire is AMBU 6)						
Night Shift (Grizzly)		E-63, AMBU 4 - Roth						
Chilcoot ICP		E-33 Camp Medical Station - Sargent, O-246 MEDL Belino, O-247 MEDL(t) Smith O-240.15 Field MEDL Prasch, O-330 Field MEDL(t) Getman						
DIV E/W (Chilcoot)		O-72 REMS 11- Meyer, E-175 AMBU 44 - Best						
DIV H (Chilcoot)		O-174 MEDIC Gifford,						
DIV J (Chilcoot)		E-142 MED. MOD 1 - Carlson, E-193 AMBU 55 - Puig, O-332 MEDIC ANGEL						
8. Prepared By (Medical Unit Leader)		9. Date/Time	10. Reviewed By (Safety Officer)		11. Date/Time			
Paul Smith, MEDLT		9/21/2023	Eric Risdal ERIC RISDAL		9/21/2023			

ACTIVITY LOG (ICS 214)

1. Incident Name:		2. Operational Period: Date From: _____ Date To: _____ Time From: _____ Time To: _____	
3. Name:		4. ICS Position:	5. Home Agency (and Unit):
6. Resources Assigned:			
Name		ICS Position	Home Agency (and Unit)
7. Activity Log:			
Date/Time	Notable Activities		
8. Prepared by: Name: _____		Position/Title: _____	Signature: _____
ICS 214, Page 1		Date/Time: _____	

MEDICAL PLAN (ICS 206 WF)

Controlled Unclassified Information//Basic

Medical Incident Report

FOR A NON-EMERGENCY INCIDENT, WORK THROUGH CHAIN OF COMMAND TO REPORT AND TRANSPORT INJURED PERSONNEL AS NECESSARY.

FOR A MEDICAL EMERGENCY: IDENTIFY ON SCENE INCIDENT COMMANDER BY NAME AND POSITION AND ANNOUNCE "MEDICAL EMERGENCY" TO INITIATE RESPONSE FROM IMT COMMUNICATIONS/DISPATCH.

Use the following items to communicate situation to communications/dispatch.

1. CONTACT COMMUNICATIONS / DISPATCH (Verify correct frequency prior to starting report)

Ex: "Communications, Div. Alpha. Stand-by for Emergency Traffic."

2. INCIDENT STATUS: Provide incident summary (including number of patients) and command structure.

Ex: "Communications, I have a Red priority patient, unconscious, struck by a falling tree. Requesting air ambulance to Forest Road 1 at (Lat./Long.) This will be the Trout Meadow Medical, IC is TFLD Jones. EMT Smith is providing medical care."

Severity of Emergency / Transport Priority	<input type="checkbox"/> RED / PRIORITY 1 Life or limb threatening injury or illness. Evacuation need is IMMEDIATE Ex: Unconscious, difficulty breathing, bleeding severely, 2 ^o – 3 ^o burns more than 4 palm sizes, heat stroke, disoriented.
	<input type="checkbox"/> YELLOW / PRIORITY 2 Serious Injury or illness. Evacuation may be DELAYED if necessary. Ex: Significant trauma, unable to walk, 2 ^o – 3 ^o burns not more than 1-3 palm sizes.
	<input type="checkbox"/> GREEN / PRIORITY 3 Minor Injury or illness. Non-Emergency transport Ex: Sprains, strains, minor heat-related illness.
Nature of Injury or Illness & Mechanism of Injury	Brief Summary of Injury or Illness (Ex: Unconscious, Struck by Falling Tree)
Transport Request	Air Ambulance / Short Haul/Hoist Ground Ambulance / Other
Patient Location	Descriptive Location & Lat. / Long. (WGS84)
Incident Name	Geographic Name + "Medical" (Ex: Trout Meadow Medical)
On-Scene Incident Commander	Name of on-scene IC of Incident within an Incident (Ex: TFLD Jones)
Patient Care	Name of Care Provider (Ex: EMT Smith)

3. INITIAL PATIENT ASSESSMENT: Complete this section for each patient as applicable (start with the most severe patient)

Patient Assessment: See IRPG page 106

Treatment:

4. TRANSPORT PLAN:

Evacuation Location (if different): (Descriptive Location (drop point, intersection, etc.) or Lat. / Long.) Patient's ETA to Evacuation Location:

Helispot / Extraction Site Size and Hazards:

5. ADDITIONAL RESOURCES / EQUIPMENT NEEDS:

Example: Paramedic/EMT, Crews, Immobilization Devices, AED, Oxygen, Trauma Bag, IV/Fluid(s), Splints, Rope rescue, Wheeled litter, HAZMAT, Extrication

6. COMMUNICATIONS: Identify State Air/Ground EMS Frequencies and Hospital Contacts as applicable

Function	Channel Name/Number	Receive (RX)	Tone/NAC *	Transmit (TX)	Tone/NAC *
COMMAND					
AIR-TO-GRND					
TACTICAL					

7. CONTINGENCY: Considerations: If primary options fail, what actions can be implemented in conjunction with primary evacuation method? Be thinking ahead.

8. ADDITIONAL INFORMATION: Updates/Changes, etc.

REMEMBER: Confirm ETA's of resources ordered. Act according to your level of training. Be Alert. Keep Calm. Think Clearly. Act Decisively.