

FINANCE MESSAGE

Finance Email: 2023.chilcoot.finance@firenet.gov or 2023.dinner.finance@firenet.gov

Finance Phones: *Contractors:* 971-245-0259 *Agency Personnel:* 971-762-8750

This incident requires electronic documentation. Please email your time to the Finance email address daily. Scanned PDF documents are preferred. Don't forget to add, in the remarks box of your CTR or shift ticket, which fire you worked on.

Required Documents

Overhead, Agency Crews & Cooperators	Contract Resources
Finance docs needed: Resource Order, Manifest, Cooperative Agreement, Casual Hire Form w/ECI# (as applicable)	Finance docs needed: Resource Order, Manifest, Full Contract/Agreement, Certifications <i>(if required)</i> Pre-Inspection
Daily: CTRs, Shift Tickets	Daily: CTRs, Shift Tickets, receipts (claims, etc.) NOTE: Document travel times and odometer readings.
Demob: Signed OF-288; Signed OF-286	Demob: Contractor Evaluations, Shift Tickets, receipt(s) for Addition/Deductions, Post-Inspection, Signed OF-286
Additional Incident Information: See cover page of the IAP for incident numbers and financial codes.	Please call finance regarding issues with your time: O-16 Whetsler E-22 Boss of the Woods O-238 McGrath O-11 Remote Access Medical O-330 Getman E-108 Mark Jones O-284 Kmak O-271 Mcauley

For your entertainment...What coin doubles in value when half is deducted? A half dollar!

LOGISTICS

Kitchen Hours

- Breakfast 0600 – 0930
- Dinner 1800 – 2100

Laundry

- Open 0500 – 2200

Supply

- Open 0600 – 2130

Fuel Tender

- Open 0630 – 2100

Showers


- Open 0500 – 1200
- Open 1400 – 2200

Ground Support

- Open 0600 – 2200

Weed Wash

- Open 0700 – 2200

INCIDENT OBJECTIVES	1. Incident Name Chilcoot, Grizzly, Ridge, Dinner, Brice Creek	2. Date September 27, 2023	3. Time 2000
4. Operational Period: 09/28/2023 0700-2100			
<p>5. General Objectives: Implement a FULL suppression strategy for Chilcoot, Grizzly, Brice Creek, Dinner and Ridge fires:</p> <ul style="list-style-type: none"> • Provide for firefighter and public safety through hazard identification and application of a shared risk management process. • Coordinate public information to provide timely updates to agency partners, cooperators, and the public. • Coordinate suppression and repair activities with READs to minimize impacts on the landscape. • Effectively manage and track costs for all five incidents. • Coordinate with agency leadership/administrators to ensure effective and efficient management of firefighting resources. <p>Chilcoot, Grizzly:</p> <ul style="list-style-type: none"> • Chilcoot: provide full incident containment through suppression actions. Grizzly: monitor and evaluate conditions that could lead to fire growth, identify and validate strategic indirect lines. • Coordinate with ODF-DFPA, as needed, for changing conditions specific to fire progression potentially impacting private lands. • Repair indirect lines not currently identified as potential containment features, identify primary line repair options as applicable. • Evaluate a PACE model for the Grizzly fire, develop near-term and long-term modeling based on future potential. • Work with partner/stakeholders (Sierra Pacific) to access, manage private lands within fire perimeter. <p>Dinner, Ridge, Brice Creek:</p> <ul style="list-style-type: none"> • Achieve full containment with suppression actions and ensure adequate mop-up is conducted to reduce the threat of escape. • Implement full repair on all indirect line construction. • Evaluate repair needs for primary line construction. • Monitor access routes "Ingress/Egress" and minimize impact to road systems. • Backhaul all equipment as applicable. 			
<p>5a. Incident Requirements</p> <ul style="list-style-type: none"> • Provide Agency Administrator updates and briefings on incident status as conditions evolve. • Firefighting operations will implement tactics that offer the highest probability of success to minimize impacts to the landscape and minimize unnecessary exposure to firefighters. • Priority values are firefighter and public safety, critical infrastructure, private land and natural resources. <p>5b. Leaders Intent</p> <ul style="list-style-type: none"> • Safety: Firefighter, public, and aviation safety will be addressed through hazard/exposure risk mitigation processes. • Risk Management: Utilize an aligned risk assessment process that mitigates exposure to firefighters through evaluation of conditions during the duration of the incident. • Communication: Keep Agency Administrators and firefighters informed of strategic actions, accomplishments, and challenges. • Operations: Make informed strategic/tactical decisions suppressing the fire in the right geographic locations with the appropriate resources having the highest probability of success. • Stakeholders: Collaborate with local partners, officials, and landowners to provide situational updates pertinent to the fire. • Logistics: Provide support ensuring food, water, and shelter for incident responders. • Human Resources: Ensure that all incident personnel are treated with dignity and respect, while having zero tolerance for harassment, alcohol, or illegal drug use. • Public Information: Provide timely and accurate information through media outlets, trap lines, briefings, community meetings, and social platforms. • Finance: Monitor and communicate incident cost associated with meeting incident objectives. • Planning: Provide incident documentation, resource tracking, and accurate data management. 			
6. Weather Forecast & General Safety Message for Period – See Attached			
7. Attachments (mark if attached)			
<input checked="" type="checkbox"/> Organization List - ICS 203	<input checked="" type="checkbox"/> Weather Forecast	<input checked="" type="checkbox"/> Safety Message	
<input checked="" type="checkbox"/> Div. Assignment Lists - ICS204	<input checked="" type="checkbox"/> Fire Behavior Forecast	<input type="checkbox"/> Medical Emergency Com Plan	
<input checked="" type="checkbox"/> Communications Plan - ICS 205	<input type="checkbox"/> Incident Map		
<input checked="" type="checkbox"/> Medical Plan - ICS 206	<input checked="" type="checkbox"/> Air Operations - ICS 220		
9. Prepared by Aileen Nichols	9. Approved by (Incident Commander) Brian Gales 		

ORGANIZATION ASSIGNMENT LIST	
1. Incident Name Chilcoot/Ridge/Grizzly/Dinner/Brice Creek	
2. Date September 27, 2023	3. Time 1830
4. Operational Period September 28, 2023 0700-2100	
Position	Name
NWIMT 13 LWD 10/08/2023	
5. Incident Commander and Staff	
Incident Commander	Brian Gales
Deputy Incident Commander	Eric Riener
Liaison Officer	Larry Nickey
Safety Officer	Ray Hershey
Safety Officer - t	Todd Meyer
Information Officer	Randall Rische
Deputy Information Officer	Eric Waters
Human Resource Specialist	Margaret Dietrich
6. Agency/Organization Representative(s):	
USFS UPF Agency Administrator	David Anderson
USFS UPF Agency Administrator	Josh Giles
USFS UPF Agency Administrator - t	Mark Sommer
USFS WIF Agency Administrator	Molly Juillerat
BLM Rosberg	Heather Whitman
BLM Rosberg	Mike Korn
Oregon Department of Forestry	Chris Cline
Oregon Department of Forestry	John Flannigan
DFPA	Aaron Whitely
Lead READ	Jed Hancock
Lead READ - t	Luis Palacios
7. Planning Section	
Plans Chief	Aileen Nichols
Deputy Plans Chief	Darrin Henderson
Resources Unit	Meredith Butcher
Resources Unit - t	Jennifer Norton
Status Check-In/Documentation Unit	Robert Wandel
Demob Unit	Laura Backlund
Situation Unit - t	Laurie Bergvall
Fire Behavior Analyst	Dean Warner
Incident Meteorologist	Jack Messick
Incident Meteorologist - t	Spencer Tangen
GIS Specialist	Josh Serfass
GIS Specialist - t	David Hines
Computer Specialist	Matt Perry
Computer Specialist - t	Cassandra Heide
Strategic Operational Planner - t	Scott Brewer
8. Logistics Section	
Logistics Chief	Dave Willis
Logistics Chief - t	Cindy Preston
Supply Unit Leader	Jon Byerly
Ordering Manager	Rob Jeter
Ordering Manager - t	Robert Yarnall
Communications Unit Ldr - t	Bruce Hanna
Incident Comm Mgr	Alandra Swords
Communications Tech	Brian Wolfenburger
Food Unit Leader	Pat Young
Facilities Unit Leader	Keith Yonaka

Base Camp Manager - t		Jake Zlotnick	
Medical Unit Leader		Ben Meacham	
Medical Unit Leader		James Brown	
Medical Unit Leader		Mark Notars	
Ground Support Unit		Billie Hunter	
9. Operations Section			
Operations (Field)		Shawn Jaca Whitney Machado - t	
Operations (Planning)		Brad Reed Tim Cawley-Murphree - t	
a. Branch			
Branch Director			
Division Supervisor	D	Grizzly Dinner Brice Creek	Matt Caldwell Billy Turner - t
Division Supervisor	H	Chilcoot Ridge	Robert Boles Kenny Peasley - t
Group Supervisor	Suppression Repair		Rob Fore
Manager	Roads		Rick Long
b. Branch			
Branch Director			
Division Supervisor			
Division Supervisor			
Division Supervisor			
Group Supervisor			
c. Night			
Division Supervisor			
d. Air Operations Branch			
Air Operations		Nancy Barker	
Air Support Group Supervisor		Jim Dotson	
Air Support Group Supervisor - t		George Leite	
10. Finance Section			
Finance Chief		Veronika Klukas	
Deputy Finance Chief		Paula James	
Cost Unit - Virtual		Lori Price	
Time Unit		Angie Chapman	
Time Unit - t		Heather Fitzpatrick	
Proc Unit Leader		Laurette Gaylord	
Proc Unit Leader - t		Eric Soto	
Equipment Time Recorder		Clay Webb	
COMPS/CLAIMS		Hanna Jeter	
Incident Cont. Project Insp		Stan Zazado	
EQTR/In Box Manager - t		Barry Purdy	
PTRC/In Box Manager - t		Leah Krandell	
PREPARED BY: Meredith Butcher			



Fire Weather Forecast



FORECAST NO: 29
FORECAST FOR: Thursday Day Shift
SHIFT DATE: 28 September 2023
DATE AND TIME ISSUED: 27 Sep 23/1800

NAME OF FIRE: Umpqua Fires
UNIT: OR-UPF
SIGNED: Jack Messick, IMET
 Spencer Tangen, IMET(t)

WEATHER DISCUSSION: Skies will be mostly cloudy this morning, but expect a few breaks in the clouds during the afternoon. Isolated showers will develop today, but any rainfall amounts will be minimal. Winds will be light with gusts to 15 mph on ridgelines from the west. Temperatures will be several degrees warmer than yesterday with humidities a little lower, but still relatively high. The next system will bring our next round of showers tonight into Friday with potential for wetting rains.

THURSDAY:

WEATHER: Cloudy in the morning with partial clearing in the afternoon. Isolated showers. Little to no rain accumulation. Chance of rain 20%.

	Max Temperatures	Minimum Relative Humidity
Valleys (2500-3500 ft)	59 to 64 deg F (8 warmer)	50% to 65% (5-10% drier)
Ridges (3500-4500 ft)	55 to 60 deg F (7 warmer)	55% to 65% (10-15% drier)

20-FOOT WINDS:

Ridgelines/upper slopes: Southeast 2-6 mph, after 1000 becoming west 4-9 mph with gusts to 15 mph.

Mid-slope/valley: Drainage 1-3 mph, after 0800 becoming west 2-7 mph with gusts to 12 mph.

AVIATION: Cloudy, ridgelines obscured by clouds. Partial clearing by 1200. 5000ft MSL temp: 8C

CWR (≥ 0.25"): 5% **LAL: 1** **HAINES: 2** **INVERSION BREAK/MH: 1100 hrs/3500ft**

CAMP FORECAST: **Strader ICP: 68F**

THURSDAY NIGHT:

WEATHER: Cloudy with a 30% chance of showers in the evening, increasing to a 70% chance after midnight. Rainfall amounts trace to 0.20".

	Min Temperatures	Maximum Relative Humidity
Valleys (2500-3500 ft)	46 to 50 deg F (5 warmer)	90-100% (no change)
Ridges (3500-4500 ft)	43 to 47 deg F (5 warmer)	90-100% (no change)

20-FOOT WINDS:

Ridgelines/upper slopes: West 3-7 mph, by 2100 becoming south 3-6 mph with gusts to 10 mph.

Mid-slope/valley: Northwest 3-6 mph, by 2100 becoming south 2-4 mph.

CWR (≥ 0.25"): 20% **LAL: 1** **INVERSION: None**

CAMP FORECAST: **Strader ICP: 49F**

EXTENDED OUTLOOK: Showers will continue on Friday, bringing the potential for wetting rain. By early Saturday morning, look for showers to move out of the area with mainly dry conditions through the remainder of the day and into Sunday and Monday. This will allow roads to start drying out. Temperatures will be cool with high humidities through the weekend, with a warming trend developing on Sunday and Monday. Winds will be from the northwest with afternoon gusts 15-25 mph on ridgelines, strongest Saturday and Sunday.

Fire Behavior Forecast #29

Incident:	Number:	TYPE OF FIRE: Wildfire
Grizzly	OR-UPF-000341	DATE/TIME ISSUED: 9/27/23 1900
Chilcoot	OR-UPF-000345	OPERATIONAL PERIOD: 9/28/2023 Day Shift
Ridge	OR-UPF-000346	FBAN: Dean Warner
Dinner	OR-UPF-000357	Signed:
Brice Creek	OR-UPF-000359	

Weather Summary - See Incident Weather Forecast: Persistent damp condnions

Fuels: Fire areas are primarily composed of *Timber Litter* (TL5), and *Timber Understory* (TU5) with *moss/lichen present in most stands*. Mature conifer stands with western hemlock and Douglas-fir, often have heavy surface fuel loading. 30 to 50+ year old second growth conifer stands contain needle litter and some down woody debris. Brush and reprod are present in open stands of mature timber.

ERC and Fuel Moisture Data	Forecast ERC (Percentile)	1 hour FM % yesterday	10 hour FM % yesterday	100 hour FM % yesterday	1000 hour FM % yesterday
Division Delta	53	24	27	23	17
Division Hotel	49	20	28	24	17

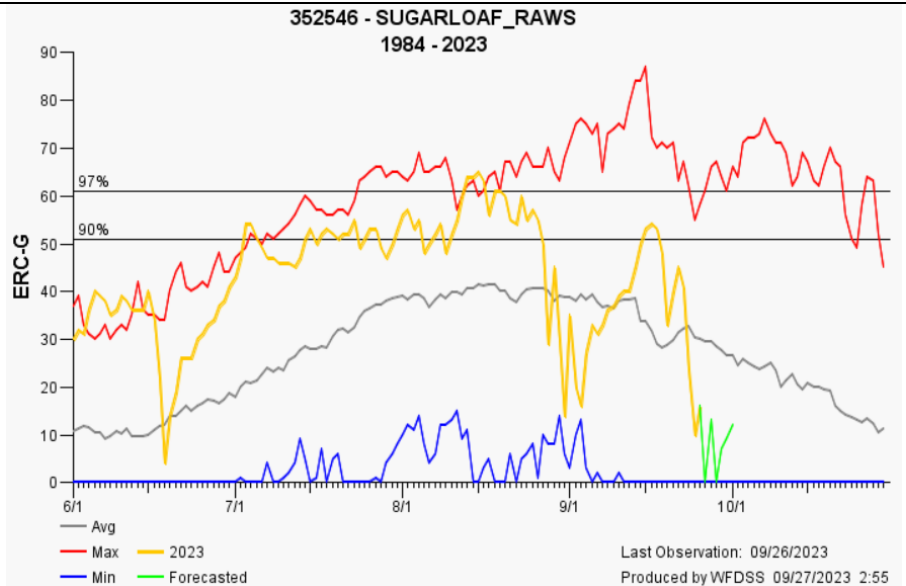
OUTPUTS: Expected Fine Dead Fuel Moisture: 9% POI: 20%

Fire Behavior: Minimal Atmosphere: Stable Max. spot distance: ¼ mile LAL: 1	Fuel/Type Model	Maximum ROS	Maximum Flame Length
	Timber Litter/TL5	3 ch/hr	2 ft.
	Timber Understory/TU5	5 ch/hr	5 ft.

Expected Fire Behavior is Based on the Warmest, Driest, Windiest Conditions Forecasted.

General: Fire activity has been severely reduced with the current precipitation pattern. 100 and 1000 hour fuels will continue to consume, especially in timber stands under a dense canopy.

Potential: Chances are slight but fire could find a path to make an uphill run. Short durations of sun light can provide enough solar radiation to dry out fuels but only in exposed areas. When drying occurs lichens and other fine fuels will be first to dry out.



Air Operations

Inversion and cloudy conditions expected to impact aviation operations throughout the day.

Safety:

Fire activity has been minimal for the past few operational periods but still exists. Fire weakened trees, slippery slopes, and ash-pits are just a few of the hazards we all need to be aware of.

DIVISION ASSIGNMENT LIST			1. Branch		2. Division D Dinner/Grizzly/Brice Creek	
3. Incident Name Umpqua Fires			4. Operational Period Date: 09/28/2023 Time: 0700-2100			
5. Operations Personnel						
Operations Chief		Shawn Jaca Whitney Machado - t		Division Supervisor		Matt Caldwell Billy Turner - t
Safety Officer		Ray Hershey Todd Meyer - t		Air Attack		
6. Resources Assigned this Period						
Strike Team/Task Force/Resource Designator		Leader	# Persons	LWD	Drop Off PT./Time	Pick Up PT./Time
1	C-10 CRW1 Baker River IHC	Shawn Otto	22	09/29	Cottage Grove/0700	Cottage Grove/2100
2	O-11 WFM Warm Springs	Joshua Sohappy	7	09/29	Cottage Grove/0700	Cottage Grove/2100
3						
4	O-328.68 SOF2	Larry Wright	1	10/08	Cottage Grove/0700	Cottage Grove/2100
5						
6	O-15 REMS 3	Nolan Howell	4	10/02	Cottage Grove/0700	Cottage Grove/2100
7	E-64 AMB2 Rough Country (AMB 5)	Jessie Evans	2	10/01	Cottage Grove/0700	Cottage Grove/2100
8						
9	E-16 UTV Top Gun				Cottage Grove/0700	Cottage Grove/2100
10						
11						
12						
13						
14						
15						
16						
17						
18						
19						
20						
21		Meal Count	Not at ICP			
7. Control Operations:						
Task: Continue to conduct suppression repair on the Dinner and Brice Creek fires. Utilize Field Maps to document suppression repair that is ready for READ approval. Monitor fire activity and take suppression actions by utilizing ground and aircraft as necessary.						
Purpose: Prevent fire from impacting values at risk, including communities to the west, commercial timberlands, and T&E habitat. Provide for firefighter and public safety.						
End state: Achieve full containment on the Dinner and Brice Creek fires. Monitor the Grizzly fire and take suppression action to ensure that it stays within its current footprint. Ensure suppression repair meets turnback standards and backhaul non-essential supplies.						
8. Special Instructions:						
Active Helispots Identified on Division Map: Dinner H 41 Grizzly H 191 Brice Creek H 161						
9. Division/Group Communication Summary						
See Communications Plan						
Prepared by (Resource Unit Ldr)		Approved by (Planning Sect. Ch.)		Date	Time	
<i>Meredith Butcher/Jennifer Norton - t</i>		<i>Aileen Nichols</i>		09/27/2023	2000	

DIVISION ASSIGNMENT LIST			1. Branch		2. Division H Chilcoot/Ridge	
3. Incident Name Umpqua Fires			4. Operational Period Date: 09/28/2023 Time: 0700-2100			
5. Operations Personnel						
Operations Chief		Shawn Jaca Whitney Machado - t		Division Supervisor		Robert Boles Kenny Peasley - t
Safety Officer		Ray Hershey Todd Meyer - t		Air Attack		
6. Resources Assigned this Period						
Strike Team/Task Force/Resource Designator	Leader	# Persons	LWD	Drop Off PT./Time	Pick Up PT./Time	
1 O-13 TFLD	Jeremy Bryant	1	09/29	Strader ICP/0700	Strader ICP/2100	
3 O-15 FMOD	Nick Browning	2	09/29	Strader ICP/0700	Strader ICP/2100	
4						
5 C-11 CR2I Highlands	Seth Schertenleib	21	09/28	Strader ICP/0700	Strader ICP/2100	
6						
7 E-4 ENG4 Torres 5	Harley Mead	3	10/02	Strader ICP/0700	Strader ICP/2100	
8 E-25 ENG6 North Pacific	Porfirio Servin	3	09/29	Strader ICP/0700	Strader ICP/2100	
9 E-26 ENG6 First Strike	Holden Hilliker	3	09/28	Strader ICP/0700	Strader ICP/2100	
10 E-42 ENG4 Methow River	Cindy Gameros	3	09/29	Strader ICP/0700	Strader ICP/2100	
11 E-184 ENG6 Diamond Fire	Nicholas King	3	10/09	Strader ICP/0700	Strader ICP/2100	
12 E-186 ENG6 Fenix	Kevin Flynn	3	10/07	Strader ICP/0700	Strader ICP/2100	
13 E-190 ENG4 J3	Carl Matheny	3	10/07	Strader ICP/0700	Strader ICP/2100	
14						
15 O-233 REAF	Dane Sjoden	1	09/28	Strader ICP/0700	Strader ICP/2100	
16 O-348 REAF	Brian Rhoten	1	10/07	Strader ICP/0700	Strader ICP/2100	
17 O-349 REAF	Craig Street	1	10/11	Strader ICP/0700	Strader ICP/2100	
18 O-350 REAF	Sofia Kim	1	10/05	Strader ICP/0700	Strader ICP/2100	
19						
20 O-333 SOFR	Larry Welsh	1	10/07	Strader ICP/0700	Strader ICP/2100	
21 E-142 AMB2 Cardinal Medical Solutions (Med MOD1)	Charles Carlson	2	10/07	Strader ICP/0700	Strader ICP/2100	
22 E-193 AMB2 Front Line (AMB 55)	Lance Puig	2	10/05	Strader ICP/0700	Strader ICP/2100	
25	Meal Count	56				
7. Control Operations:						
<p>Task: Continue to secure, mop-up control lines and take suppression actions by utilizing ground and aircraft as necessary on the Chilcoot fire. Identify hazard trees along access roads. Conduct suppression repair on Chilcoot and Ridge fires. Utilize Field Maps to document suppression repair that is ready for READ approval.</p> <p>Purpose: Prevent fire from impacting values at risk, including communities, commercial and T&E habitat. Provide for firefighter and public safety.</p> <p>End state: Achieve full containment on the Chilcoot and Ridge fires. Ensure suppression repair meets tumback standards and backhaul non-essential supplies.</p>						
8. Special Instructions:						
<p>Active Helispots identified on Division Maps: Chilcoot H 57, H 51, H 1, H 43 Ridge H 291, H 293</p>						
9. Division/Group Communication Summary						
See Communications Plan						
Prepared by (Resource Unit Ldr) <i>Meredith Butcher/Jennifer Norton - t</i>		Approved by (Planning Sect. Ch.) <i>Aileen Nichols</i>		Date 09/27/2023	Time 2000	

DIVISION ASSIGNMENT LIST			1. Branch		2. Division Suppression Repair	
3. Incident Name Umpqua Fires			4. Operational Period Date: 09/28/2023 Time: 0700-2100			
5. Operations Personnel						
Operations Chief		Shawn Jaca Whitney Machado - t		Division Supervisor		Rob Fore
Safety Officer		Ray Hershey Todd Meyer - t		Air Attack		
6. Resources Assigned this Period						
Strike Team/Task Force/Resource Designator	Leader	# Persons	LWD	Drop Off PT./Time	Pick Up PT./Time	
1 O-141 TFLD	Eric Bader	1	10/05	Strader ICP/0700	Strader ICP/2100	
2 O-314 TFLD	Tom Schoenfelder	1	09/28	Strader ICP/0700	Strader ICP/2100	
3 O-16 TFLD - t	Brian Whetsler	1	09/30	Strader ICP/0700	Strader ICP/2100	
4 O-14 HEQB	Ethan Reddic	1	09/29	Strader ICP/0700	Strader ICP/2100	
5 O-291 HEQB	Brian Gentis	1	09/29	Strader ICP/0700	Strader ICP/2100	
6 O-323 HEQB	William Addison	1	10/04	Strader ICP/0700	Strader ICP/2100	
7 O-355 HEQB	Matthew Jones	1	10/11	Strader ICP/0700	Strader ICP/2100	
8 O-292 HEQB - t	Garrett Gibbs	1	09/29	Strader ICP/0700	Strader ICP/2100	
9 O-18 FMOD Toms Timber	Tom Conway	2	10/03	Strader ICP/0700	Strader ICP/2100	
10						
11 E-114 EXC2 Scott Marshall	Kevin Holstrom	2	10/04	Strader ICP/0700	Strader ICP/2100	
12 E-108 EXC3 Mark Jones	Ethan Wilding	2	10/04	Strader ICP/0700	Strader ICP/2100	
13 E-107 EXC4 Carbon Works	Brandon Wilson	2	10/05	Strader ICP/0700	Strader ICP/2100	
14 E-214 EXC4 Bob Murray Trucking	Chad Mills	2	10/05	Strader ICP/0700	Strader ICP/2100	
15 E-215 EXC4 Sutphin Trucking	Cabe Foster	2	10/05	Strader ICP/0700	Strader ICP/2100	
17 E-211 CHSL Pacific Ridgeline	Kade Doyle	2	10/05	Strader ICP/0700	Strader ICP/2100	
18 E-27 CHP2 ASI Arden	Rocky Katon	3	10/04	Strader ICP/0700	Strader ICP/2100	
19						
20 O-233 REAF	Dane Sjoden	1	09/28	Strader ICP/0700	Strader ICP/2100	
21 O-348 REAF	Brian Rhoten	1	10/07	Strader ICP/0700	Strader ICP/2100	
22 O-349 REAF	Craig Street	1	10/11	Strader ICP/0700	Strader ICP/2100	
23 O-350 REAF	Sofia Kim	1	10/05	Strader ICP/0700	Strader ICP/2100	
24						
25 O-330 EMTF (EMT 11)	Jedediah Getman	1	10/04	Strader ICP/0700	Strader ICP/2100	
26	Meal Count	30				
7. Control Operations: TASK: Coordinate with Division D and H to continue fire suppression repair. Ensure that READS are informed and approve completed repairs in Field Maps. PURPOSE: Reduce future erosion, road distress and suppression impacts. END STATE: Repair suppression actions meeting agency standards. All identified control lines repaired are approved and documented on Field Maps by READS.						
8. Special Instructions: Active Helispots Identified on Division Maps: Div D Dinner H 41 - Div D Grizzly H 191 - Div D Brice Creek H 161 Div H Chilcoot H 57, H 51, H 1 - Div H Ridge H 291, H 293						
9. Division/Group Communication Summary						
See Communications Plan						
Prepared by (Resource Unit Ldr) <i>Meredith Butcher/Jennifer Norton - t</i>		Approved by (Planning Sect. Ch.) <i>Aileen Nichols</i>		Date 09/27/2023	Time 2000	

DIVISION ASSIGNMENT LIST			1. Branch		2. Division Road Group	
3. Incident Name Umpqua Fires			4. Operational Period Date: 09/28/2023 Time: 0700-2100			
5. Operations Personnel						
Operations Chief		Shawn Jaca Whitney Machado - t		Group Supervisor		Rick Long
Safety Officer		Ray Hershey Todd Meyer - t		Air Attack		
6. Resources Assigned this Period						
Strike Team/Task Force/Resource Designator		Leader	# Persons	LWD	Drop Off PT./Time	Pick Up PT./Time
1	O-320 EQPM	Cameron Eskeberg	1	10/02	Strader ICP/0700	Strader ICP/2100
2						
3	E-137 WTS2 On the Go H2O	May Hernandez	1	09/29	Strader ICP/0700	Strader ICP/2100
4	E-138 WTS2 Cowboy Fire	Chris Andreasen	1	10/06	Strader ICP/0700	Strader ICP/2100
5	E-200 WTS2 M&M	Mark Csernak	1	09/30	Strader ICP/0700	Strader ICP/2100
6						
7	E-6 GRD1 Mark Jones	Jes Calbert	2	10/09	Strader ICP/0700	Strader ICP/2100
8	E-12 VROL Mark Jones	Riley Looney	1	10/09	Strader ICP/0700	Strader ICP/2100
9						
10						
11						
12						
13						
14						
15						
16						
17						
18						
19						
20						
21						
22						
23		Meal Count	8			
7. Control Operations: TASK: Maintain roadways for access and egress. Utilize Field Maps to document road repair that is ready for READ approval. PURPOSE: Reduce road distress and damages as outlined in Umpqua National Forest Commercial Road Use Rules and Road Use Permit Requirements document. END STATE: Roads are fully functional and meet forest standards.						
8. Special Instructions: Active Helispots Identified on Division Maps: Div D Dinner H 41 - Div D Grizzly H 191 - Div D Brice Creek H 161 Div H Chilcoot H 57, H 51, H 1 - Div H Ridge H 291, H 293						
9. Division/Group Communication Summary						
See Communications Plan						
Prepared by (Resource Unit Ldr) <i>Meredith Butcher/Jennifer Norton - t</i>		Approved by (Planning Sect. Ch.) <i>Aileen Nichols</i>		Date 09/27/23	Time 2000	

AIR OPERATIONS SUMMARY 220		Prepared/Approved: Nancy Barker	Prepared: 9/27/2023	Prepared Time: 1800 hrs.	
1. INCIDENT NAME: UMPQUA FIRES	2. OPERATIONAL PERIOD 09/28/2023	START TIME: 0700	END TIME: 1900	SUNRISE: 0706	SUNSET: 1858

<p>3. REMARKS (Safety Notes, Hazards, Air Operations Special Equipment, etc.). Smoky conditions * Steep terrain * Shadow effects</p> <p>Only use approved dip sites. Do not cross contaminate water sources. Sanitize buckets per READ direction between water sources.</p> <p>All GPS data to be collected in DEGREES, DECIMAL MINUTES.</p> <p>Aircraft costs daily to: 2023.chilcoot.finance@firenet.gov and cc to 2023.chilcoot.airops@firenet.gov</p>	<p>4. READY ALERT AIRCRAFT:</p> <p>N38HX Teton Short Haul @ Grants Pass</p> <p>Order through Roseburg Aircraft Desk 541-957-3325</p>	<p>5.TFR:</p> <p>No TFR's...see and avoid</p>
---	---	--

6. PERSONNEL	NAME	PHONE #	7. FREQUENCIES			8. FIXED-WING Avail/ Type/ Make-Model/ N#/ Base
Glide Helibase			A/A TFR and Primary (A-2)	AM	FM	<i>AIRTANKERS: ORDER THRU ATGS</i>
AOBD	Nancy Barker	253-312-4301	A/G Primary (A-4)		165.9875	ATGS – order through Roseburg Dispatch
ASGS	Jim Dotson	307-413-2024	A/G Secondary (A-5)		173.5000	Landing Sites on Fire: See pilot map for locations. Know the helispots near your work area.
ASGS-t	George Leite	360-581-8428				Glide Helibase 43°18.922'N X 123°04.415'W 700'
HEBM	Geoff Gillespie	760-223-0180	Deck Tone 156.7 (TX/RX)		163.1000	TANK DIPS: See pilot map
ORRIC	Aircraft Desk	541-957-3325				LAKE DIPS:
FAO	Jim Dotson	307-413-2024	IA A/G 49 USFS		168.0375	Gertrude Lake 43°35.698'N X 122°32.452'W 3990'
For IA: send flight strip to Geoffrey.Gillespie@usda.gov			IA A/G 81 USFS		166.9500	Crawfish Lake 43°37.502'N X 122°42.222'W 4794'
			VMED29 Tone 156.7 (TX/RX)		155.3475	Crystal Lake 43°35.602'N X 122°38.655'W 4650'
			CTAF		122.8	Elephant Lake 43°35.742'N X 122°39.237'W 5126'
			Air Guard Tone 110.9 (TX)		168.6250	Helibase Comm Trailer – Incident Response (E-19)

FAA N#	T Y	MAKE/ MODEL	BASE	START	AVAIL	REMARKS	FAA N#	TY	MAKE/ MODEL	BASE	START	AVAIL	REMARKS
N357KA (A-57)	1	KMAX	Glide	0700	0800	1 personnel	(O-373) Filled						UASP Greg Reidelbach
N933CH (A-39)	2	Bell 205 A1	Glide	0700	0800	6 personnel							
32HX (A-20)	3	AS 350	Glide	0700	0800	9 personnel							

INCIDENT RADIO COMMUNICATIONS PLAN (ICS 205)

1. Incident Name:			2. Date Prepared:			3. Operational Period:				
GRIZZLY/BRICE CREEK/DINNER CHILCOOT/ RIDGE			Date: 09/27/23			Date/time from: 09/28/23 0700 HRS		Date/Time To: 09/28/23 2100 HRS		
4. Radio Channel Use:										
Zone/ Group	Ch#	Function	Channel Name	Assignment	RX Freq	RX Tone/NAC	TX Freq	TX Tone/NAC	Mode (A/D)	Remarks
	1	TACTICAL	TAC 1	DIV D	168.0500	167.9	168.0500	167.9	A	DIVISION D
	2	TACTICAL	TAC 2	DIV H	168.2000	167.9	168.2000	167.9	A	DIVISION H
	3	TACTICAL	TAC 3	SUPPRESSION REPAIR	168.6000	167.9	168.6000	167.9	A	REPAIR
	4	TACTICAL	TAC 4	UNASSIGNED	166.7250	167.9	166.7250	167.9	A	UNASSIGNED
	5	AIR TO GROUND	A/G PRI	AIR TO GROUND PRI	165.9875	NONE	165.9875	NONE	A	AIR TO GROUND OPS, PRIMARY
	6	AIR TO GROUND	A/G SEC	AIR TO GROUND SEC	173.5000	NONE	173.5000	NONE	A	AIR TO GROUND OPS, SECONDARY
	7	COMMAND	CMD 7	COMMAND	169.7500	167.9	167.1000	167.9	A	CMD 7-LOCATED ON SCOTT MTN
	8	COMMAND	CMD 8	COMMAND	173.7125	167.9	162.6000	167.9	A	CMD 8- LOCATED ON PIG IRON LOOKOUT
	9	COMMAND	CMD 9	COMMAND	173.6000	167.9	169.4625	167.9	A	CMD 9- LOCATED ON CHILCOOT MTN
	10	COMMAND	CMD 10	COMMAND	169.8375	167.9	162.4625	167.9	A	CMD 10- LOCATED ON LOOKOUT MTN
	11	COMMAND	CMD 11	COMMAND	170.0625	167.9	162.4375	167.9	A	CMD 11- LOCATED ON FAIRVIEW LOOKOUT
	12	TACTICAL	TAC 12	ROAD GROUP	168.2500	167.9	168.2500	167.9	A	ROAD MAINT. TAC
	13	UNASSIGNED		UNASSIGNED						UNASSIGNED
	14	UNASSIGNED		UNASSIGNED						UNASSIGNED
	15	AIR TO GROUND	VMED29	MEDICAL	155.3475	156.7	155.3475	156.7	A	MEDICAL USE ONLY
	16	AIR GUARD	AIR GUARD	ALL DIVS	168.6250	NONE	168.6250	110.9	A	EMERGENCY USE ON LY
5. Special Instructions		CHILCOOT COMMS: (949) 648-1591								
6. Prepared By (Communications Unit Leader)			Name: Bruce Hanna				Signed: /s/ Bruce Hanna			
Communications staffed 0600-2200							Date/Time: 09/27/23 17:30			

MUTUAL RESPECT

Each of us has a responsibility to behave in a manner that ensures a harassment-free work environment. This is accomplished when we treat others with dignity and respect.

In today’s world it often seems we are living on parallel planets, where the vast partisan/cultural divide has led to two different information streams. Here our mission is to work together to put out the fire. The best way to accomplish that is to show one another mutual respect.

This type of responsible behavior supports a positive work environment and is considered appropriate behavior. Inappropriate behavior is divisive, disruptive, and damaging to teamwork. Appropriate behavior builds relationships.

Training

If you are ordered as a trainee you can bring me your task book along with your red card or email it to Team13trsp@outlook.com and I will enter you into the training database for the fire. If you have questions feel free to call, text, email, or drop in.

Margaret Dietrich
Human Resource Specialist/Training Specialist
Cell 360-701-3154 or Team13trsp@outlook.com



CHECK-IN Process All Resources

STEP 1. Scan the QR code to fill out and submit the online check-in form.



- Have your resource order ready, as many questions reference it.

STEP 2. Email your MANIFEST (if appropriate).

Include your request number in the subject line (e.g, E-118, 0-48).

- If you are assigned to the Grizzly, Dinner or Brice Creek incidents, email to 2023.dinner.checkin@firenet.gov
- If you are assigned to the Chilcoot or Ridge incidents, email to 2023.chilcoot.checkin@firenet.gov

STEP 3. See Finance page in IAP for further instructions on how to check in with finance.

STEP 4. Complete vehicle inspection as instructed on your resource order, including contract inspection as needed.

If you have any issues, please contact Check-in at 971-727-5061 or by email at 2023.chilcoot.checkin@firenet.gov or 2023.dinner.checkin@firenet.gov

Dinner-Grizzly-Brice Creek- Chilcoot-Ridge Demob Check-Out Form

RO # _____ Resource Name _____ Fire: _____ Date: _____

Initials

Follow these steps in the order below:

- _____ 1. **Weed Wash** – ALL line resources that went off-road will need to go through a Weed Wash. **If not needed, proceed to step 2.**
- _____ 2. **Ground support** – Contractors must stop to sign their release inspection. The inspection is optional for agency resources. **Agency resources proceed to step 3.**
- _____ 3. **Supply** – Return any items you checked out. All units must have initials from SUPPLY confirming all equipment has been returned.
- _____ 4. **Communications** – Return any items you checked out. All units must have initials from COMMUNICATIONS confirming all radio equipment has been returned.
- _____ 5. **Finance** – Proceed to finance to receive your final timesheet. Having ALL your times turned in and up to date will GREATLY speed up the process.
- _____ 6. **Demob – Final step.** Return completed Demob Check-Out form and any Documentation to Demob/Check-in. Documentation can also be emailed to 2023.chilcoot.docs@firenet.gov. Let Demob know your estimated time of departure, arrival time and destination. You will not be released from the incident with Dispatch until this is completed.

ALL AIR TRAVELERS

Submit your air request 72 hours prior to flight date through the QR code on the IAP Cover. Call 971-727-5061 for any questions or assistance.

DMOB LIST FOR 09/28/2023

DINNER-BRICE CREEK-GRIZZLY FIRES			
09/28/2023	E-20	C & K WILDLAND FIRE	PUP1
09/28/2023	O-131	MARTSCH, DAVID	COMT
CHILCOOT-RIDGE FIRES			
09/28/2023	O-274	CULPEPPER, JAROM	COMT

DMOB LIST FOR 09/29/2023

DINNER-BRICE CREEK-GRIZZLY FIRES			
09/29/2023	C-11	HIGHLANDS	CR2I
09/29/2023	E-26	FIRST STRIKE ENVIRONMENTAL COMPANY	ENG6
09/29/2023	O-139	TANKERSLEY, ANNA	FACL
CHILCOOT-RIDGE FIRES			
09/29/2023	O-269	VIGNESS, JARROD	SEC1
09/29/2023	O-271	MCAULEY, BRENNAN	SEC1
09/29/2023	O-294	PALM, KEVIN	GSUL
09/29/2023	O-314	SCHOENFELDER, THOMAS	TFLD
09/29/2023	S-439	WILDLAND SECURITY	SSEC

DMOB LIST FOR 09/30/2023

DINNER-BRICE CREEK-GRIZZLY FIRES			
09/30/2023	C-10	BAKER RIVER	CRW1
09/30/2023	E-25	NORTH PACIFIC FORESTRY, INC.	ENG6
09/30/2023	E-42	METHOW RIVER	ENG4
09/30/2023	O-11	WILDLAND FIRE MOD T2 - WARM SPRINGS	WFM2
09/30/2023	O-13	BRYANT, JEREMY	TFLD
09/30/2023	O-14	REDDICK, ETHAN	HEQB
CHILCOOT-RIDGE FIRES			
09/30/2023	E-137	ON THE GO H2O	WTS2
09/30/2023	O-272	NAVARRETE, GILBERTHO	SEC1
09/30/2023	O-284	KMAK, CASEY	RADO
09/30/2023	O-287	VAUGHAN, MICHAEL	FACL
09/30/2023	O-288	MCCARTY, SHANNA	PSC2
09/30/2023	O-290	TANGEN, SPENCER	IMET
09/30/2023	O-291	GENTIS, BRIAN	HEQB
09/30/2023	O-292	GIBBS, GARRETT	HEQB
09/30/2023	O-295	MANN, ELLIOT	RADO
09/30/2023	O-300	STONE, COLLYN	RADO
09/30/2023	O-303	GALLIN, WILLIAM	RADO
09/30/2023	O-307	DE LEON, ERNESTO	RADO

Extensions and Crew Swaps – NW 13

This is the Team Standard Operating procedure based on national policy

- **Resources may be demobed, regardless of crew status, if it is no longer needed.**
- Contract Crews are generally not extended unless replacement resources are scarce. Crews may swap crew members if needed by utilizing the crew swap form at the QR code below.
- Resources ordered on 'O' numbers cannot swap crew members (exception - some medical resources). These resources can extend depending on availability and needs of the incident. See Plans for a resource extension form.

Contracted Fireline Equipment Crew Swap Procedure

- Contract equipment may stay on the incident until it is no longer needed, a maximum dollar amount is reached, or replacement crew members cannot be provided.
- It is the responsibility of the contract owner to track their crew members and ensure they maintain proper work/rest ratios. The IMT assumes contracted equipment will swap crew members as needed to provide adequate rest for their employees.
- Non-fireline equipment personnel (like hand wash stations) are not tracked other than a current onsite contact.
- If replacement crew members cannot be provided, this must be documented on an ICS-213 and provided to Operations and Plans at least 72 hours prior to the 14th workday. The resource will be demobed after 14 shifts OR an extension form may be completed based on operational need, see Plans for this form.
- Crew swaps MUST be tracked through the below QR code form as soon as known, no later than 1800 on the day prior to the swap. If the new crew member is the primary operator and any information in the IAP is incorrect, correct information MUST be provided to the Division Supervisor immediately following the operational briefing/division breakout.
- We prefer all members of a resource swap at once if possible. The crew swap form will need to be filled out for each individual crew member.
- Replacement workers must provide proof of current annual training upon request.

QR code link to Umpqua Fires FTP page, then find button named **Crew Swap Form**



Please contact Plans after the briefing, at their office, or at Check-in if you have questions or wish to understand how your last workday/demob date was determined.



Resource Advisor Message

Objectives – One objective of the fire suppression is to repair areas disturbed by fire suppression activities into a condition that does not negatively affect natural and cultural resources and will not create excessive erosion on the landscape. Without compromising public and firefighter safety:

- Reduce the potential for soil erosion and sedimentation.
- Repair roads and drainage structures to a functioning condition.
- Avoid driving any kind of machinery on severely burned soils.
- Reduce the visual impacts of fire line as well other suppression activities when feasible.
- Avoid dragging large trees across soils, especially severely burned soils.
- Avoid driving machinery on moist soils.
- Avoid bucking up large, downed wood. Leave logs in as long of piece as possible.
- **Leave no trace.** Pack out trash if cans are overflowing, avoid leaving trash next to overflowing trash cans.

General Road Rules

Roads can be damaged easily during rainfall events. Signs of road distress include the following:

- Surface deformities such as: potholes, soft spots, ruts, etc. greater than 2" deep
- Pooling water, indicating drainage not functioning as designed.
- Slurry or conditions that causes loss of traction.
- Utilize 4-wheel drive on gravel roads in order to reduce impacts to the road surface.

Roads with signs of distress should not be driven on. Work with REAFs to implement erosion control measures.

General Water Bar Specifications:

- Facing the slope, standing at the bottom of a repair feature or existing water bar, the next water bar constructed should be placed at eye level.
- Water bars should be constructed into compacted soil and not constructed by simply pushing up loose soil and duff.
- Water bars should direct runoff away from the burned area where possible (into the green).
- Water bars should have out-sloped trenching at 30-45 ° from perpendicular to the fire line.
- Assure that the downslope end of the water bar is open and has adequate length to allow free flow of water off the line.
- Logs can be incorporated into water bars if they are embedded or anchored in a trench.
- Slash can be placed below outlet of water bar to help slow runoff and help collect sediment.



Do you or the public need to reach the PIOs?

Phone: (541) 900-5862

Emails:

Brice Creek/Dinner/Grizzly: 2023.dinner@firenet.gov

Chilcoot/Ridge: 2023.chilcoot@firenet.gov

Please email us your photos! (And don't forget your
PPE 😊)



Chilcoot Fire Information



Dinner, Brice Creek and Grizzly Fires Information

Mail

Address your mail to:

C/O (Chilcoot Fire, Your Name, Crew/RO Number, Phone Number)

North Umpqua Ranger District

18782 North Umpqua Highway

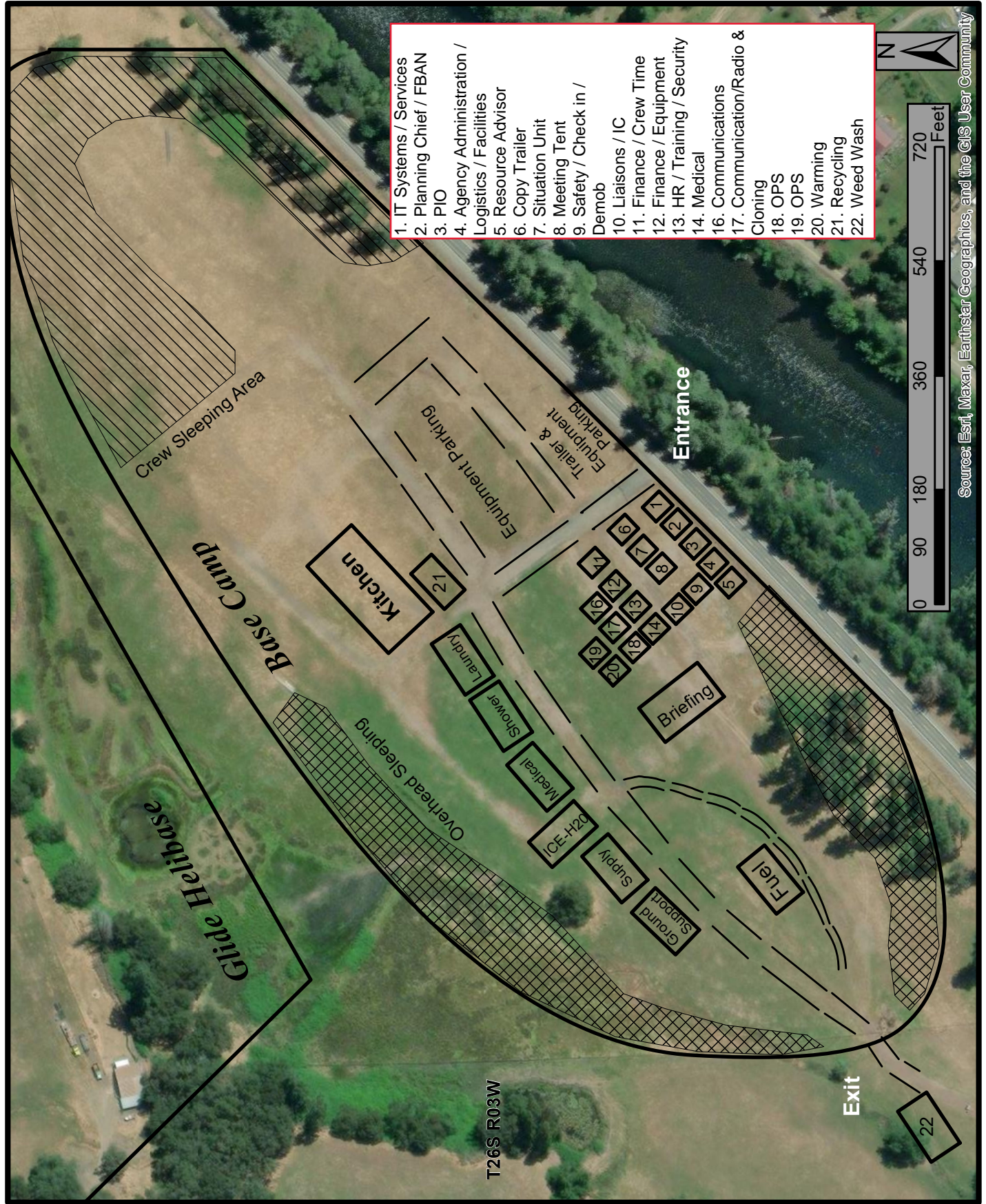
Glide, OR 97443

Pick-up: You will need to pick up your mail at the Umpqua Ranger District



**Call or visit our trailer at ICP if you've lost
or found something!**

Chilcoot ICP Basecamp Map

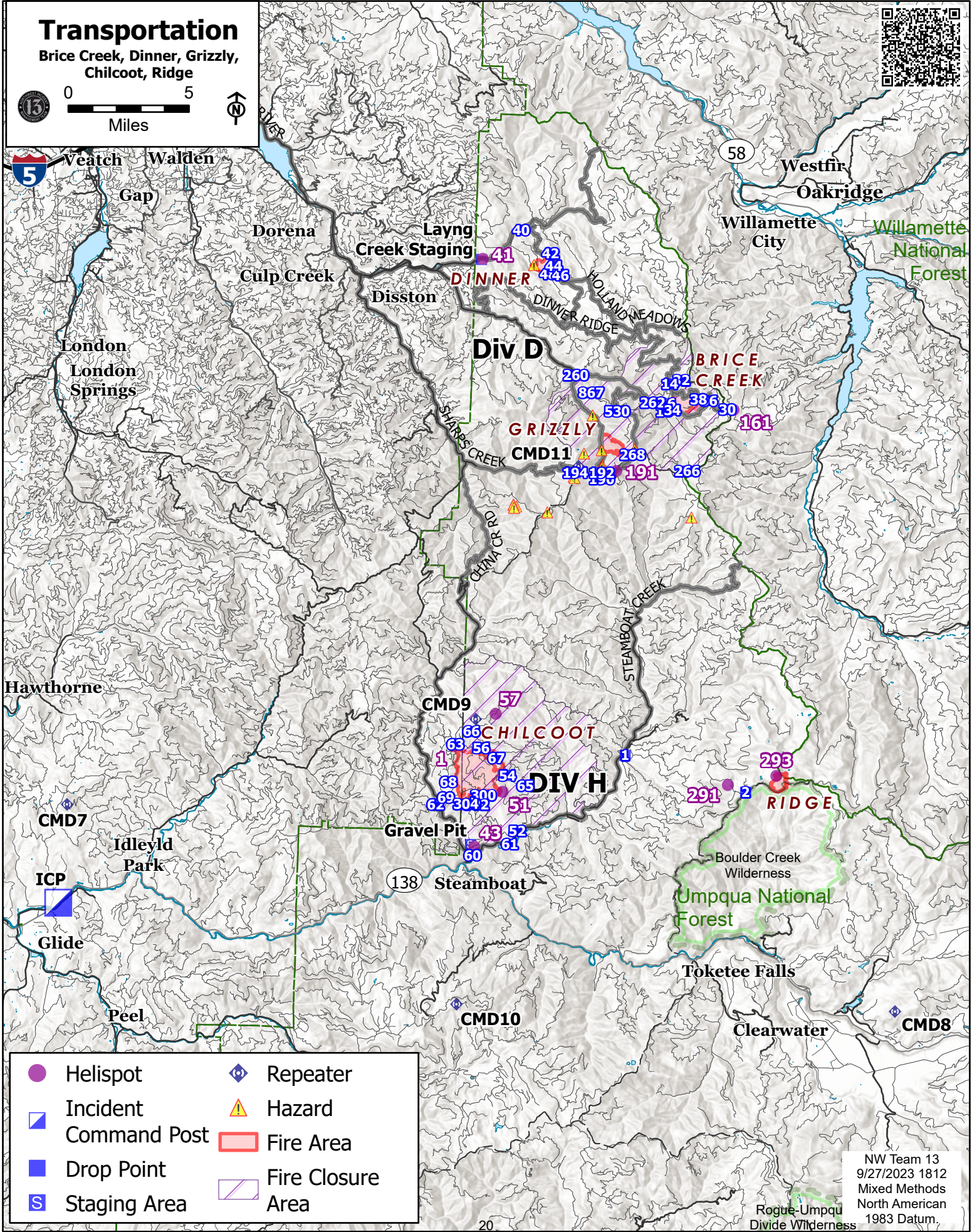


Transportation

Brice Creek, Dinner, Grizzly, Chilcoot, Ridge



0 5
Miles



- | | |
|-------------------------|---------------------|
| ● Helispot | ◆ Repeater |
| ▣ Incident Command Post | ⚠ Hazard |
| ■ Drop Point | ■ Fire Area |
| Ⓢ Staging Area | ▨ Fire Closure Area |

NW Team 13
9/27/2023 1812
Mixed Methods
North American
1983 Datum.

RETURN TO PLANNING OPS BY 1300 HRS
Via radio (preferred method), text, email, photo, or cell phone
Project for Next Operational Period and 48 & 72 hours in the Future

DIVISION PLANNING SHEET		Division/ Group	Name Of Division /Group Supervisor		
Next Operational Period Date:					
Operations and Resource unit text number and e-mail					
<input type="checkbox"/> - Roll over assigned Resources <input type="checkbox"/> -Excess resources <input type="checkbox"/> -Correction to 204					
E or C number	Strike Team/Task Force/ Resource Designator	Leader	Number Persons	Comments	
<input type="checkbox"/> -Request for additional Resources					
Number	Type	Resource Kind	Number	Type	Resource Kind
Operational Projection/Resource Needs/Excess Resources (48 hours):					
Operational Projection/Resource Needs/Excess Resources (72 hours):					
Comments					

MEDICAL PLAN (206 WF)

1. Incident/Project Name				2. Operational Period				
Dinner/Grizzly/Brice Creek/Chilcoot/Ridge				Date/Time: 9/28 0700 – 9/28 2100				
3. Ambulance Services								
Name	Complete Address	Phone	Advanced Life Support (ALS)					
			Yes	No				
Umpqua Valley Ambulance	Roseburg, OR	911	X					
Glide Rural Fire Protection	Glide, OR	911	X					
4. Air Ambulance Services								
Name	Phone	Type of Aircraft & Capability						
LIFE FLIGHT	1-800-232-0911 / 911	Critical Care Team of Paramedic and RN 24 hr, 100'x100' LZ.						
REACH	1-800-338-4045	Critical Care Team of Paramedic and RN 24 hr, 100'x100' LZ.						
Teton Short Haul	Chilcoot Communications	Short Haul, Daytime-Grants Pass, OR						
5. Hospitals								
Name	Degrees Decimal Minutes	Travel Time From ICP		Phone	Helipad		Level of Care	
		Air	Gnd.		Yes	No		
Mercy Health Hospital 2700 NW Stewart Pkwy Roseburg, OR 97471	Lat: 43° 14.567 N	40 Min	2 Hrs	541-673-0611	X		Level III Trauma	
	Long: 123° 21.983 W							
Sacred Heart Hospital 3333 Riverbend Dr. Springfield, OR 97477	Lat: 44° 04.876 N	1 Hr	3 Hrs	541-222-6931	X		Level II Trauma	
	Long: 123° 01.588 W							
Legacy Emanuel Hospital (Portland, OR)	Lat: 45° 32.668' N	1.5 Hrs	5 Hrs	503-413-4121	X		Level I Trauma Burn Center	
	Long: 122° 40.293' W							
ICP	EMS Responders & Capability:		Ben Meacham MEDL		360-921-3817			
			James Brown MEDL		360-775-5413			
			Juels Bublitz (Camp Medical Station)		508-963-5903			
	Equipment Available on Scene:		ALS Kit, LP15 defib, O2, OTC meds					
	Medical Emergency Channel:		Chilcoot Communications Plan					
	ETA for Ambulance to Scene:							
	Air:		25 Min					
	Ground:		30 Min					
Approved Heli-Spot:								
Lat:								
Long:								
DIV D	EMS Responders & Capability:		AMBO 5 Jessie Evans		515-729-4993 ALS Ambulance			
			REMS 3 Nolan Howell		541-399-6555 ALS /UTV/Rope Rescue			
	Equipment Available on Scene:		ALS Kit, defib, O2, OTC meds					
	Medical Emergency Channel:		Chilcoot Communications Plan					
	ETA for Ambulance to Scene:							
	Air:		50 min					
	Ground:		45 min					
	Approved Heli-Spot:							
Lat:								
Long:								
DIV H	EMS Responders & Capability:		AMBO 55 Lance Puig		972-689-3348 ALS Ambulance			
			MED MOD 1 Julie Sargent		508-963-4903 ALS/UTV			
	Equipment Available on Scene:		ALS Kit, defib, O2, OTC meds					
	Medical Emergency Channel:		Chilcoot Communications Plan					
	ETA for Ambulance to Scene:							
	Air:		50 min					
	Ground:		45 min					
	Approved Heli-Spot:							
Lat:								
Long:								
Suppression Repair Group	EMS Responders & Capability:		EMT 11 Jed Getman		541-391-3243 BLS			
	Equipment Available on Scene:		BLS Kit, defib, O2					
	Medical Emergency Channel:		Chilcoot Communications Plan					
	ETA for Ambulance to Scene:							
	Air:		50 min					
	Ground:		45 min					
	Approved Heli-Spot:							
	Lat:							
Long:								

Prepared By (Medical Unit Leader)	Date	Reviewed By (Safety Officer)	Date
Ben Meacham MEDL	9/27/2023	Ray Hershey SOF2	9/27/2023
Signature: Ben Meacham		Signature: Ray Hershey	

MEDICAL PLAN (ICS 206 WF)

Controlled Unclassified Information//Basic

Medical Incident Report

FOR A NON-EMERGENCY INCIDENT, WORK THROUGH CHAIN OF COMMAND TO REPORT AND TRANSPORT INJURED PERSONNEL AS NECESSARY.

FOR A MEDICAL EMERGENCY: IDENTIFY ON-SCENE INCIDENT COMMANDER BY NAME AND POSITION AND ANNOUNCE "MEDICAL EMERGENCY" TO INITIATE RESPONSE FROM IMT COMMUNICATIONS/DISPATCH.

Use the following items to communicate situation to communications/dispatch.

1. CONTACT COMMUNICATIONS / DISPATCH (Verify correct frequency prior to starting report)

Ex: "Communications, Div. Alpha. Stand-by for Emergency Traffic."

2. INCIDENT STATUS: Provide incident summary (including number of patients) and command structure.

Ex: "Communications, I have a Red priority patient, unconscious, struck by a falling tree. Requesting air ambulance to Forest Road 1 at (Lat./Long.) This will be the Trout Meadow Medical, IC is TFLD Jones. EMT Smith is providing medical care."

Severity of Emergency / Transport Priority	<input type="checkbox"/> RED / PRIORITY 1 Life or limb threatening injury or illness. Evacuation need is IMMEDIATE <i>Ex: Unconscious, difficulty breathing, bleeding severely, 2° – 3° burns more than 4 palm sizes, heat stroke, disoriented.</i> <input type="checkbox"/> YELLOW / PRIORITY 2 Serious Injury or illness. Evacuation may be DELAYED if necessary. <i>Ex: Significant trauma, unable to walk, 2° – 3° burns not more than 1-3 palm sizes.</i> <input type="checkbox"/> GREEN / PRIORITY 3 Minor Injury or illness. Non-Emergency transport <i>Ex: Sprains, strains, minor heat-related illness.</i>	
Nature of Injury or Illness & Mechanism of Injury		<i>Brief Summary of Injury or Illness (Ex: Unconscious, Struck by Falling Tree)</i>
Evacuation Request		<i>Air Ambulance / Short Haul/Hoist Ground Ambulance / Other</i>
Patient Location		<i>Descriptive Location & Lat. / Long. (WGS84)</i>
Incident Name		<i>Geographic Name + Medical (Ex: Trout Meadow Medical)</i>
On-Scene Incident Commander		<i>Name of on-scene IC of Incident within an Incident (Ex: TFLD Jones)</i>
Patient Care		<i>Name of Care Provider (Ex: EMT Smith)</i>

3. INITIAL PATIENT ASSESSMENT: Complete this section for each patient as applicable (start with the most severe patient)

Patient Assessment: See IRPG PAGE 106

Treatment:

4. EVACUATION PLAN:

Evacuation Location (if different): (Descriptive Location (drop point, intersection, etc.) or Lat. / Long.) Patient's ETA to Evacuation Location:

Helispot / Extraction Site Size and Hazards:

5. ADDITIONAL RESOURCES / EQUIPMENT NEEDS:

Example: Paramedic/EMT, crews, immobilization devices, AED, oxygen, trauma bag, IV/fluid(s), splints, rope rescue, wheeled litter, HAZMAT, extrication

6. COMMUNICATIONS: Identify State Air/Ground EMS Frequencies and Hospital Contacts as applicable

Function	Channel Name/Number	Receive (RX)	Tone/NAC *	Transmit (TX)	Tone/NAC *
COMMAND					
AIR-TO-GRND					
TACTICAL					

7. CONTINGENCY: Considerations: If primary options fail, what actions can be implemented in conjunction with primary evacuation method? Be thinking ahead..

8. ADDITIONAL INFORMATION: Updates/Changes, etc.

REMEMBER: Confirm ETAs of resources ordered. Act according to your level of training. Be Alert. Keep Calm. Think Clearly. Act Decisively.