



## FINANCE MESSAGE

**Finance Email:** [2023.chilcoot.finance@firenet.gov](mailto:2023.chilcoot.finance@firenet.gov) or [2023.dinner.finance@firenet.gov](mailto:2023.dinner.finance@firenet.gov)

**Finance Phones:** *Contractors:* 971-245-0259 *Agency Personnel:* 971-762-8750

**This incident requires electronic documentation.** Please email your time to the Finance email address daily. Scanned PDF documents are preferred. Don't forget to add, in the remarks box of your CTR or shift ticket, which fire you worked on.

### Required Documents

Overhead, Agency Crews & Cooperators	Contract Resources
<b>Finance docs needed:</b> Resource Order, Manifest, Cooperative Agreement, Casual Hire Form w/ECI# (as applicable)	<b>Finance docs needed:</b> Resource Order, Manifest, Full Contract/Agreement, Certifications <i>(if required)</i> Pre-Inspection
<b>Daily:</b> CTRs, Shift Tickets	<b>Daily:</b> CTRs, Shift Tickets, receipts (claims, etc.) <b>NOTE: Document travel times and odometer readings.</b>
<b>Demob:</b> Signed OF-288; Signed OF-286	<b>Demob:</b> Contractor Evaluations, Shift Tickets, receipt(s) for Addition/Deductions, Post-Inspection, Signed OF-286
<b>Additional Incident Information:</b>  See cover page of the IAP for incident numbers and financial codes.	<b>Please call finance regarding issues with your time:</b> O-16 Whetsler            E-22 Boss of the Woods O-238 McGrath        O-11 Remote Access Medical O-330 Getman         E-108 Mark Jones E-60 Michael Krouse E-211 Pacific Ridgeline

For your entertainment...Why was the dead man not living well? Because he was dead broke!

## LOGISTICS

### Kitchen Hours

- Breakfast 0600 – 0900
- Dinner 1800 – 2100

### Laundry

- Open 0500 – 2200

### Supply

- Open 0600 – 2130

### Fuel Tender

- Open 0630 – 2100

### Showers

- Open 0500 – 1200
- Open 1400 – 2200


### Ground Support

- Open 0600 – 2200

### Weed Wash (20016 Umpqua Hwy, turn at Bug Farm RD)

- Open 0700 – 2200

**Communications #: 949-648-1591**

<b>INCIDENT OBJECTIVES</b>	<b>1. Incident Name</b> Chilcoot, Grizzly, Ridge, Dinner, Brice Creek	<b>2. Date</b> September 29, 2023	<b>3. Time</b> 2000
<b>4. Operational Period: 09/30/2023 0700-2100</b>			
<p><b>5. General Objectives:</b> Implement a FULL suppression strategy for Chilcoot, Grizzly, Brice Creek, Dinner and Ridge fires:</p> <ul style="list-style-type: none"> <li>• Provide for firefighter and public safety through hazard identification and application of a shared risk management process.</li> <li>• Coordinate public information to provide timely updates to agency partners, cooperators, and the public.</li> <li>• Coordinate suppression and repair activities with READs to minimize impacts on the landscape.</li> <li>• Effectively manage and track costs for all five incidents.</li> <li>• Coordinate with agency leadership/administrators to ensure effective and efficient management of firefighting resources.</li> </ul> <p>Chilcoot, Grizzly:</p> <ul style="list-style-type: none"> <li>• Chilcoot: provide full incident containment through suppression actions. Grizzly: monitor and evaluate conditions that could lead to fire growth, identify and validate strategic indirect lines.</li> <li>• Coordinate with ODF-DFPA, as needed, for changing conditions specific to fire progression potentially impacting private lands.</li> <li>• Repair indirect lines not currently identified as potential containment features, identify primary line repair options as applicable.</li> <li>• Evaluate a PACE model for the Grizzly fire, develop near-term and long-term modeling based on future potential.</li> <li>• Work with partner/stakeholders (Sierra Pacific) to access, manage private lands within fire perimeter.</li> </ul> <p>Dinner, Ridge, Brice Creek:</p> <ul style="list-style-type: none"> <li>• Achieve full containment with suppression actions and ensure adequate mop-up is conducted to reduce the threat of escape.</li> <li>• Implement full repair on all indirect line construction.</li> <li>• Evaluate repair needs for primary line construction.</li> <li>• Monitor access routes "Ingress/Egress" and minimize impact to road systems.</li> <li>• Backhaul all equipment as applicable.</li> </ul>			
<p><b>5a. Incident Requirements</b></p> <ul style="list-style-type: none"> <li>• Provide Agency Administrator updates and briefings on incident status as conditions evolve.</li> <li>• Firefighting operations will implement tactics that offer the highest probability of success to minimize impacts to the landscape and minimize unnecessary exposure to firefighters.</li> <li>• Priority values are firefighter and public safety, critical infrastructure, private land and natural resources.</li> </ul> <p><b>5b. Leaders Intent</b></p> <ul style="list-style-type: none"> <li>• <b>Safety:</b> Firefighter, public, and aviation safety will be addressed through hazard/exposure risk mitigation processes.</li> <li>• <b>Risk Management:</b> Utilize an aligned risk assessment process that mitigates exposure to firefighters through evaluation of conditions during the duration of the incident.</li> <li>• <b>Communication:</b> Keep Agency Administrators and firefighters informed of strategic actions, accomplishments, and challenges.</li> <li>• <b>Operations:</b> Make informed strategic/tactical decisions suppressing the fire in the right geographic locations with the appropriate resources having the highest probability of success.</li> <li>• <b>Stakeholders:</b> Collaborate with local partners, officials, and landowners to provide situational updates pertinent to the fire.</li> <li>• <b>Logistics:</b> Provide support ensuring food, water, and shelter for incident responders.</li> <li>• <b>Human Resources:</b> Ensure that all incident personnel are treated with dignity and respect, while having zero tolerance for harassment, alcohol, or illegal drug use.</li> <li>• <b>Public Information:</b> Provide timely and accurate information through media outlets, trap lines, briefings, community meetings, and social platforms.</li> <li>• <b>Finance:</b> Monitor and communicate incident cost associated with meeting incident objectives.</li> <li>• <b>Planning:</b> Provide incident documentation, resource tracking, and accurate data management.</li> </ul>			
<b>6. Weather Forecast &amp; General Safety Message for Period – See Attached</b>			
<b>7. Attachments (mark if attached)</b>			
<input checked="" type="checkbox"/> Organization List - ICS 203	<input checked="" type="checkbox"/> Weather Forecast	<input checked="" type="checkbox"/> Safety Message	
<input checked="" type="checkbox"/> Div. Assignment Lists - ICS204	<input checked="" type="checkbox"/> Fire Behavior Forecast	<input type="checkbox"/> Medical Emergency Com Plan	
<input checked="" type="checkbox"/> Communications Plan - ICS 205	<input type="checkbox"/> Incident Map		
<input checked="" type="checkbox"/> Medical Plan - ICS 206	<input checked="" type="checkbox"/> Air Operations - ICS 220		
<b>9. Prepared by</b> Aileen Nichols	<b>9. Approved by (Incident Commander)</b> Brian Gales 		

<b>ORGANIZATION ASSIGNMENT LIST</b>	
1. Incident Name <b>Chilcoot/Ridge/Grizzly/Dinner/Brice Creek</b>	
2. Date <b>September 29, 2023</b>	3. Time <b>1830</b>
4. Operational Period <b>September 30, 2023 0700-2100</b>	
Position	Name
<b>NWIMT 13 LWD 10/08/2023</b>	
5. Incident Commander and Staff	
Incident Commander	<b>Brian Gales</b>
Deputy Incident Commander	<b>Eric Riener</b>
Liaison Officer	<b>Larry Nickey</b>
Safety Officer	<b>Ray Hershey</b>
Safety Officer - †	<b>Todd Meyer</b>
Information Officer	<b>Randall Rishe</b>
Deputy Information Officer	<b>Erin Phillips</b>
Human Resource Specialist	<b>Margaret Dietrich</b>
6. Agency/Organization Representative(s):	
USFS UPF Agency Administrator	<b>David Anderson</b>
USFS UPF Agency Administrator	<b>Josh Giles</b>
USFS UPF Agency Administrator - †	<b>Mark Sommer</b>
USFS WIF Agency Administrator	<b>Molly Juillerat</b>
BLM Rosberg	<b>Heather Whitman</b>
BLM Rosberg	<b>Mike Korn</b>
Oregon Department of Forestry	<b>Chris Cline</b>
Oregon Department of Forestry	<b>John Flannigan</b>
DFPA	<b>Aaron Whitely</b>
Lead READ	<b>Jed Hancock</b>
Lead READ - †	<b>Luis Palacios</b>
7. Planning Section	
Plans Chief	<b>Aileen Nichols</b>
Deputy Plans Chief	<b>Darrin Henderson</b>
Resources Unit	<b>Meredith Butcher</b>
Resources Unit - †	<b>Jennifer Norton</b>
Status Check-In/Documentation Unit	<b>Robert Wandel</b>
Demob Unit	<b>Laura Backlund</b>
Situation Unit - †	<b>Laurie Bergvall</b>
Fire Behavior Analyst	<b>Dean Warner</b>
Incident Meteorologist	<b>Jack Messick</b>
GIS Specialist	<b>Josh Serfass</b>
Computer Specialist	<b>Matt Perry</b>
Computer Specialist - †	<b>Cassandra Heide</b>
Strategic Operational Planner - †	<b>Scott Brewer</b>
8. Logistics Section	
Logistics Chief	<b>Dave Willis</b>
Logistics Chief - †	<b>Cindy Preston</b>
Supply Unit Leader	<b>Jon Byerly</b>
Ordering Manager	<b>Rob Jeter</b>
Ordering Manager - †	<b>Robert Yarnall</b>
Communications Unit Ldr - †	<b>Bruce Hanna</b>
Incident Comm Mgr	<b>Alandra Swords</b>
Communications Tech	<b>Brian Wolfenburger</b>
Food Unit Leader	<b>Pat Young</b>
Facilities Unit Leader	<b>Keith Yonaka</b>
Base Camp Manager - †	<b>Jake Zlotnick</b>
Medical Unit Leader	<b>Ben Meacham</b>
Medical Unit Leader	<b>James Brown</b>

Medical Unit Leader			<b>Mark Notars</b>
Ground Support Unit			<b>Billie Hunter</b>
9. Operations Section			
Operations (Field)			<b>Shawn Jaca</b> <b>Whitney Machado - †</b>
Operations (Planning)			<b>Brad Reed</b> <b>Tim Cawley-Murphree - †</b>
a. Branch			
Branch Director			
Division Supervisor	<b>D</b>	<b>Grizzly Dinner Brice Creek</b>	<b>Matt Caldwell</b> <b>Billy Turner - †</b>
Division Supervisor	<b>H</b>	<b>Chilcoot Ridge</b>	<b>Robert Boles</b> <b>Kenny Peasley - †</b>
Group Supervisor	<b>Suppression Repair</b>		<b>Rob Fore</b> <b>Silas Baffa - †</b>
Manager	<b>Roads</b>		<b>Rick Long</b>
b. Branch			
Branch Director			
Division Supervisor			
Division Supervisor			
Division Supervisor			
Group Supervisor			
c. Night			
Division Supervisor			
d. Air Operations Branch			
Air Operations			<b>Nancy Barker</b>
Air Support Group Supervisor			<b>Jim Dotson</b>
Air Support Group Supervisor - †			<b>George Leite</b>
10. Finance Section			
Finance Chief			<b>Veronika Klukas</b>
Deputy Finance Chief			<b>Paula James</b>
Cost Unit - Virtual			<b>Lori Price</b>
Time Unit			<b>Angie Chapman</b>
Time Unit - †			<b>Heather Fitzpatrick</b>
Proc Unit Leader			<b>Laurette Gaylord</b>
Proc Unit Leader - †			<b>Eric Soto</b>
Equipment Time Recorder			<b>Clay Webb</b>
COMPS/CLAIMS			<b>Hanna Jeter</b>
Incident Cont. Project Insp			<b>Stan Zazado</b>
EQTR/In Box Manager - †			<b>Barry Purdy</b>
PTRC/In Box Manager - †			<b>Leah Krandell</b>
<b>PREPARED BY: Meredith Butcher</b>			



# Fire Weather Forecast



**FORECAST NO:** 31  
**FORECAST FOR:** Saturday Day Shift  
**SHIFT DATE:** 30 September 2023  
**DATE AND TIME ISSUED:** 29 Sep 23/1800

**NAME OF FIRE:** Umpqua Fires  
**UNIT:** OR-UPF  
**SIGNED:** Jack Messick, IMET  
 Spencer Tangen, IMET(t)

**WEATHER DISCUSSION:** The low that brought all the rain yesterday will be moving through northern Nevada today. It is moving slower than previous thinking. Light rain and cloudy to mostly cloudy skies should continue through today and into the evening hours. Rainfall will be much less than Friday's amount. By Sunday skies should become partly cloudy with no rain expected as the low continues east. With fewer clouds, expect a cold start to the mornings.

### SATURDAY:

**WEATHER:** Cloudy, by 1300 becoming mostly cloudy. Rain likely in the morning, by 1300 becoming a chance of rain. Chance of precipitation 60 percent. Expected rainfall 0.05 to 0.24 of an inch.

	Max Temperatures	Minimum Relative Humidity
<b>Valleys</b> (2500-3500 ft)	49 to 55 deg F (Little change)	70% to 80% (5% drier)
<b>Ridges</b> (3500-4500 ft)	47 to 53 deg F (2 warmer)	75% to 85% (Little change)

### **20-FOOT WINDS:**

**Ridgelines/upper slopes:** North 2-7 mph with gusts to 10 mph, after 1200 becoming north northwest 7-14 mph with gusts to 19 mph.

**Mid-slope/valley:** Downslope/downvalley 1-5 mph, becoming north 6 to 11 mph gusts to 16 mph.

**AVIATION:** Cloudy, obscurations due to rain, low clouds, and fog. 5000ft MSL temp: +7C

**CWR (≥ 0.25"):** 15%    **LAL:** 1    **HAINES:** 2    **INVERSION BREAK/MH:** No inversion/2100ft-3100ft AGL

**CAMP FORECAST:**    **Strader ICP:** 62F

### SATURDAY NIGHT:

**WEATHER:** Mostly cloudy, by 2000 becoming mostly clear.

	Min Temperatures	Maximum Relative Humidity
<b>Valleys</b> (2500-3500 ft)	34 to 42 deg F (6 cooler)	80-100% (little change)
<b>Ridges</b> (3500-4500 ft)	30 to 36 deg F (5 cooler)	80-100% (little change)

### **20-FOOT WINDS:**

**Ridgelines/upper slopes:** North northwest 2-10 mph, by midnight becoming variable up to 3 mph.

**Mid-slope/valley:** North northwest 2 to 6 mph, by 2000 becoming downslope/down valley 1 to 3 mph.

**CWR (≥ 0.25"):** Zero

**LAL:** 1

**INVERSION:** Inversion top developing around 1600ft AGL.

**CAMP FORECAST:**

**Strader ICP:** 41F

**EXTENDED OUTLOOK:** Sunday: Mostly sunny. High 54 to 64. Good recovery, with afternoon humidity staying above 45%. Afternoon ridge wind north northwest 7 to 13 mph gusts to 17 mph. Sunday night/Monday: Partly cloudy. Low 35 to 45. High 54 to 62. Humidity readings staying above 50%. Afternoon ridge wind northwest 4 to 10 mph gusts to 16 mph. Monday night/Tuesday: Partly cloudy. A 40% chance of rain. Low 38 to 46. High 56 to 66. Humidity staying above 55%. Afternoon ridge wind north northwest 7 to 13 mph gusts to 17 mph.

## Fire Behavior Forecast #31

<b>Incident:</b>	<b>Number:</b>	<b>TYPE OF FIRE:</b> Wildfire
Grizzly	OR-UPF-000341	<b>DATE/TIME ISSUED:</b> 9/29/23 1900
Chilcoot	OR-UPF-000345	<b>OPERATIONAL PERIOD:</b> 9/30/2023 Day Shift
Ridge	OR-UPF-000346	<b>FBAN:</b> Dean Warner
Dinner	OR-UPF-000357	<b>Signed:</b>
Brice Creek	OR-UPF-000359	

**Weather Summary** - See Incident Weather Forecast: Persistent damp condnions

**Fuels:** Fire areas are primarily composed of *Timber Litter* (TL5), and *Timber Understory* (TU5) with *moss/lichen present in most stands*. Mature conifer stands with western hemlock and Douglas-fir, often have heavy surface fuel loading. 30 to 50+ year old second growth conifer stands contain needle litter and some down woody debris. Brush and reprod are present in open stands of mature timber.

ERC and Fuel Moisture Data	Forecast ERC (Percentile)	1 hour FM % yesterday	10 hour FM % yesterday	100 hour FM % yesterday	1000 hour FM % yesterday
Division Delta	35 -21	35 +17	33 +10	23 <sup>Nc</sup>	20 +2
Division Hotel	13 -39	35 +19	32 +10	21 -4	21 +2

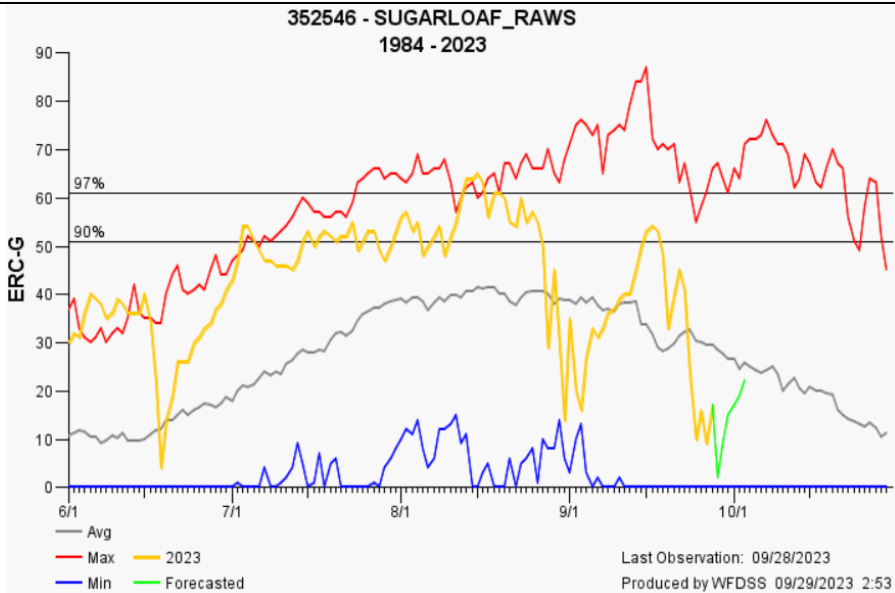
**OUTPUTS:** Expected Fine Dead Fuel Moisture: 9% POI: 20%

Fire Behavior: Minimal Atmosphere: Stable Max. spot distance: ¼ mile LAL: 1	<b>Fuel/Type Model</b>	<b>Maximum ROS</b>	<b>Maximum Flame Length</b>
	Timber Litter/TL5	3 ch/hr	2 ft.
	Timber Understory/TU5	5 ch/hr	5 ft.

Expected Fire Behavior is Based on the Warmest, Driest, Windiest Conditions Forecasted.

**General:** Fire activity will be minimal given current precipitation pattern. 100 and 1000 hour fuels will continue to consume, especially in timber stands under a dense canopy.

**Potential:** A 24-48 hour drying trend will be required to elevate fire activity. Short durations of sun light can provide enough solar radiation to dry out fuels but only in exposed areas. When drying occurs, lichens and other fine fuels will be first to dry out.



### Air Operations

Inversion and cloudy conditions expected to impact aviation operations throughout the day.

### Safety:

Standard Order Number 1 is emphasized today: **Keep informed on fire weather conditions and forecasts.** Fire danger has been severely reduced over the past few days but we must always remain informed and concerned for any weather events that can produce adverse effects, no matter the mission.

<b>DIVISION ASSIGNMENT LIST</b>			1. Branch		2. Division <b>D</b> <b>Dinner/Grizzly/Brice Creek</b>	
3. Incident Name <b>Umpqua Fires</b>			4. Operational Period Date: <b>09/30/2023</b> Time: <b>0700-2100</b>			
5. Operations Personnel						
Operations Chief		<b>Shawn Jaca</b> <b>Whitney Machado - t</b>		Division Supervisor		<b>Matt Caldwell</b> <b>Billy Turner - t</b>
Safety Officer		<b>Ray Hershey</b> <b>Todd Meyer - t</b>		Air Attack		
6. Resources Assigned this Period						
	Strike Team/Task Force/Resource Designator	Leader	# Persons	LWD	Drop Off PT./Time	Pick Up PT./Time
1	<b>O-372 WFM2 Metolius</b>	<b>Stephen Hanson</b>	<b>11</b>	<b>10/12</b>	<b>Cottage Grove/0700</b>	<b>Cottage Grove/2100</b>
2						
3	<b>O-328.68 SOF2</b>	<b>Larry Wright</b>	<b>1</b>	<b>10/08</b>	<b>Cottage Grove/0700</b>	<b>Cottage Grove/2100</b>
4						
5	<b>O-15 REMS 3</b>	<b>Nolan Howell</b>	<b>4</b>	<b>10/02</b>	<b>Cottage Grove/0700</b>	<b>Cottage Grove/2100</b>
6	<b>E-64 AMB2 Rough Country (AMB 5)</b>	<b>Jessie Evans</b>	<b>2</b>	<b>10/01</b>	<b>Cottage Grove/0700</b>	<b>Cottage Grove/2100</b>
7						
8	<b>E-16 UTV Top Gun</b>				<b>Cottage Grove/0700</b>	<b>Cottage Grove/2100</b>
9						
10						
11						
12						
13						
14						
15						
16						
17						
18						
19						
20						
21		<b>Meal Count</b>	<b>Not at ICP</b>			
7. Control Operations: <b>Task:</b> Continue to conduct suppression repair on the Dinner and Brice Creek fires. Utilize Field Maps to document suppression repair that is ready for READ approval. Monitor fire activity and take suppression actions by utilizing ground and aircraft as necessary. <b>Purpose:</b> Prevent fire from impacting values at risk, including communities to the west, commercial timberlands, and T&E habitat. Provide for firefighter and public safety. <b>End state:</b> Achieve full containment on the Dinner and Brice Creek fires. Monitor the Grizzly fire and take suppression action to ensure that it stays within its current footprint. Ensure suppression repair meets turnback standards and backhaul non-essential supplies.						
8. Special Instructions: Active Helispots Identified on Division Map: Dinner H 41 Grizzly H 191 Brice Creek H 161						
9. Division/Group Communication Summary						
<b>See Communications Plan</b>						
Prepared by (Resource Unit Ldr) <i>Meredith Butcher/Jennifer Norton - t</i>		Approved by (Planning Sect. Ch.) <i>Aileen Nichols</i>		Date <b>09/29/2023</b>	Time <b>2000</b>	

DIVISION ASSIGNMENT LIST			1. Branch		2. Division <b>H Chilcoot/Ridge</b>	
3. Incident Name <b>Umpqua Fires</b>			4. Operational Period Date: <b>09/30/2023</b> Time: <b>0700-2100</b>			
5. Operations Personnel						
Operations Chief		<b>Shawn Jaca Whitney Machado - t</b>		Division Supervisor		<b>Robert Boles Kenny Peasley - t</b>
Safety Officer		<b>Ray Hershey Todd Meyer - t</b>		Air Attack		
6. Resources Assigned this Period						
Strike Team/Task Force/Resource Designator	Leader	# Persons	LWD	Drop Off PT./Time	Pick Up PT./Time	
1 O-371 TFLD	Matthew Roby	1	10/12	Strader ICP/0700	Strader ICP/2100	
2						
3 C-57 CR2I Mt Baker IA	Erik Usher	22	10/12	Strader ICP/0700	Strader ICP/2100	
4 C-58 CRW2 UMF Vet Crew	Andrew Goshgarian	18	10/10	Strader ICP/0700	Strader ICP/2100	
5 C-59 CR2I North Columbia	Dylan Chester	20	10/12	Strader ICP/0700	Strader ICP/2100	
6 C-60 CR2I OWF Chelan	Tyler Herdman	20	10/12	Strader ICP/0700	Strader ICP/2100	
7						
8 E-4 ENG4 Torres 5	Harley Mead	3	10/02	Strader ICP/0700	Strader ICP/2100	
9 E-184 ENG6 Diamond Fire	Nicholas King	3	10/10	Strader ICP/0700	Strader ICP/2100	
10 E-186 ENG6 Fenix	Suzane Flynn	3	10/07	Strader ICP/0700	Strader ICP/2100	
11 E-190 ENG4 J3	Carl Matheny	3	10/07	Strader ICP/0700	Strader ICP/2100	
12						
13 O-129 READ	Jed Hancock	1	10/11	Strader ICP/0700	Strader ICP/2100	
14 O-348 REAF	Brian Rhoten	1	10/07	Strader ICP/0700	Strader ICP/2100	
15 O-349 REAF	Craig Street	1	10/11	Strader ICP/0700	Strader ICP/2100	
16 O-350 REAF	Sofia Kim	1	10/05	Strader ICP/0700	Strader ICP/2100	
17						
18 O-333 SOFR	Larry Welsh	1	10/08	Strader ICP/0700	Strader ICP/2100	
19 O-360 REMS 4	Brandon Church	4	10/12	Strader ICP/0700	Strader ICP/2100	
20 E-142 AMB2 Cardinal Medical Solutions (Med MOD1)	Marcas Garcia	2	10/07	Strader ICP/0700	Strader ICP/2100	
21 E-193 AMB2 Front Line (AMB 55)	Lance Puig	2	10/05	Strader ICP/0700	Strader ICP/2100	
22	<b>Meal Count</b>	<b>105</b>				
7. Control Operations:						
<p><b>Task:</b> Continue to secure, mop-up control lines and take suppression actions by utilizing ground and aircraft as necessary on the Chilcoot fire. Identify hazard trees along access roads. Conduct suppression repair on Chilcoot and Ridge fires. Utilize Field Maps to document suppression repair that is ready for READ approval.</p> <p><b>Purpose:</b> Prevent fire from impacting values at risk, including communities, commercial and T&amp;E habitat. Provide for firefighter and public safety.</p> <p><b>End state:</b> Achieve full containment on the Chilcoot and Ridge fires. Suppression repair meets turnback standards and non-essential supplies have been back hauled.</p>						
8. Special Instructions:						
<p>Active Helispots identified on Division Maps:  Chilcoot H 57, H 51, H 1, H 43  Ridge H 291, H 293</p>						
9. Division/Group Communication Summary						
<b>See Communications Plan</b>						
Prepared by (Resource Unit Ldr) <i>Meredith Butcher/Jennifer Norton - t</i>		Approved by (Planning Sect. Ch.) <i>Aileen Nichols</i>		Date <b>09/29/2023</b>	Time <b>2000</b>	



DIVISION ASSIGNMENT LIST			1. Branch		2. Division <b>Suppression Repair Page 1</b>	
3. Incident Name <b>Umpqua Fires</b>			4. Operational Period Date: <b>09/30/2023</b> Time: <b>0700-2100</b>			
5. Operations Personnel						
Operations Chief		<b>Shawn Jaca Whitney Machado - t</b>		Division Supervisor		<b>Rob Fore Silas Baffa - t</b>
Safety Officer		<b>Ray Hershey Todd Meyer - t</b>		Air Attack		
6. Resources Assigned this Period						
Strike Team/Task Force/Resource Designator	Leader	# Persons	LWD	Drop Off PT./Time	Pick Up PT./Time	
1 O-141 TFLD	Eric Bader	1	10/05	Strader ICP/0700	Strader ICP/2100	
2 O-363 TFLD	Mitchell Stiles	1	10/12	Strader ICP/0700	Strader ICP/2100	
3 O-370 TFLD	Jon Campbell	1	10/12	Strader ICP/0700	Strader ICP/2100	
4 O-16 TFLD - t	Brian Whetsler	1	09/30	Strader ICP/0700	Strader ICP/2100	
5 O-323 HEQB	William Addison	1	10/04	Strader ICP/0700	Strader ICP/2100	
6 O-353 HEQB	Anthony Weider	1	10/12	Strader ICP/0700	Strader ICP/2100	
7 O-355 HEQB	Matthew Jones	1	10/11	Strader ICP/0700	Strader ICP/2100	
8 O-356 HEQB - t	Colin Thompson	1	10/12	Strader ICP/0700	Strader ICP/2100	
9 O-357 HEQB - t	Kyle Murphy	1	10/12	Strader ICP/0700	Strader ICP/2100	
10 O-382 HEQB - t	Garret Watson	1	10/12	Strader ICP/0700	Strader ICP/2100	
11 O-18 FMOD Toms Timber	Tom Conway	2	10/03	Strader ICP/0700	Strader ICP/2100	
12						
13 E-114 EXC2 Scott Marshall	Kevin Holstrom	2	10/04	Strader ICP/0700	Strader ICP/2100	
14 E-108 EXC3 Mark Jones	Ethan Wilding	2	10/04	Strader ICP/0700	Strader ICP/2100	
15 E-107 EXC4 Carbon Works	Brandon Wilson	2	10/05	Strader ICP/0700	Strader ICP/2100	
16 E-214 EXC4 Bob Murray Trucking	Chad Mills	2	10/05	Strader ICP/0700	Strader ICP/2100	
17 E-215 EXC4 Sutphin Trucking	Cabe Foster	2	10/05	Strader ICP/0700	Strader ICP/2100	
18 E-211 CHSL Pacific Ridgeline	Kade Doyle	2	10/05	Strader ICP/0700	Strader ICP/2100	
19 E-27 CHP2 ASI Arden	Rocky Katon	3	10/04	Strader ICP/0700	Strader ICP/2100	
20 E-230 LOGL Pacific Ridgeline	Brett Miller	2	10/12	Strader ICP/0700	Strader ICP/2100	
21						
22 O-330 EMTF (EMT 11)	Jedediah Getman	1	10/04	Strader ICP/0700	Strader ICP/2100	
23						
24	<b>Meal Count</b>	<b>30</b>				
7. Control Operations:						
<b>TASK:</b> Coordinate with Division D and H to continue fire suppression repair. Ensure that READS are informed and approve completed repairs in Field Maps.						
<b>PURPOSE:</b> Reduce future erosion, road distress and suppression impacts.						
<b>END STATE:</b> Repair suppression actions meet agency standards. All identified control lines repaired are approved and documented on Field Maps by READS.						
8. Special Instructions:						
Active Helispots Identified on Division Maps:						
Div D Dinner H 41 - Div D Grizzly H 191 - Div D Brice Creek H 161						
Div H Chilcoot H 57, H 51, H 1, H 43 - Div H Ridge H 291, H 293						
9. Division/Group Communication Summary						
<b>See Communications Plan</b>						
Prepared by (Resource Unit Ldr) <i>Meredith Butcher/Jennifer Norton - t</i>			Approved by (Planning Sect. Ch.) <i>Aileen Nichols</i>		Date <b>09/29/2023</b>	Time <b>2000</b>

<b>DIVISION ASSIGNMENT LIST</b>			1. Branch		2. Division <b>Suppression Repair Page 2</b>	
3. Incident Name <b>Umpqua Fires</b>			4. Operational Period Date: <b>09/30/2023</b> Time: <b>0700-2100</b>			
5. Operations Personnel						
Operations Chief		<b>Shawn Jaca Whitney Machado - t</b>		Division Supervisor		<b>Rob Fore Silas Baffa - t</b>
Safety Officer		<b>Ray Hershey Todd Meyer - t</b>		Air Attack		
6. Resources Assigned this Period						
	Strike Team/Task Force/Resource Designator	Leader	# Persons	LWD	Drop Off PT./Time	Pick Up PT./Time
1	<b>O-129 READ</b>	<b>Jed Hancock</b>	<b>1</b>	<b>10/11</b>	<b>Strader ICP/0700</b>	<b>Strader ICP/2100</b>
2	<b>O-352 READ - t</b>	<b>Luis Palacios</b>	<b>1</b>	<b>10/11</b>	<b>Strader ICP/0700</b>	<b>Strader ICP/2100</b>
4	<b>O-348 REAF</b>	<b>Brian Rhoten</b>	<b>1</b>	<b>10/07</b>	<b>Strader ICP/0700</b>	<b>Strader ICP/2100</b>
5	<b>O-349 REAF</b>	<b>Craig Street</b>	<b>1</b>	<b>10/11</b>	<b>Strader ICP/0700</b>	<b>Strader ICP/2100</b>
6	<b>O-350 REAF</b>	<b>Sofia Kim</b>	<b>1</b>	<b>10/05</b>	<b>Strader ICP/0700</b>	<b>Strader ICP/2100</b>
7	<b>O-381 TSHP</b>	<b>Dan Smith</b>	<b>1</b>	<b>10/12</b>	<b>Strader ICP/0700</b>	<b>Strader ICP/2100</b>
8						
9						
10						
11						
12						
13						
14						
15						
16						
17						
18						
19						
20						
21						
22						
23						
24		<b>Meal Count</b>	<b>2</b>			
7. Control Operations: <b>TASK:</b> Coordinate with Division D and H to continue fire suppression repair. Ensure that READS are informed and approve completed repairs in Field Maps. <b>PURPOSE:</b> Reduce future erosion, road distress and suppression impacts. <b>END STATE:</b> Repair suppression actions meet agency standards. All identified control lines repaired are approved and documented on Field Maps by READS.						
8. Special Instructions: Active Helispots Identified on Division Maps: Div D Dinner H 41 - Div D Grizzly H 191 - Div D Brice Creek H 161 Div H Chilcoot H 57, H 51, H 1, H 43 - Div H Ridge H 291, H 293						
9. Division/Group Communication Summary						
<b>See Communications Plan</b>						
Prepared by (Resource Unit Ldr) <i>Meredith Butcher/Jennifer Norton - t</i>		Approved by (Planning Sect. Ch.) <i>Aileen Nichols</i>		Date <b>09/29/2023</b>	Time <b>2000</b>	

DIVISION ASSIGNMENT LIST			1. Branch		2. Division <b>Road Group</b>	
3. Incident Name <b>Umpqua Fires</b>			4. Operational Period Date: <b>09/30/2023</b> Time: <b>0700-2100</b>			
5. Operations Personnel						
Operations Chief		<b>Shawn Jaca Whitney Machado - t</b>		Group Supervisor		<b>Rick Long</b>
Safety Officer		<b>Ray Hershey Todd Meyer - t</b>		Air Attack		
6. Resources Assigned this Period						
Strike Team/Task Force/Resource Designator	Leader	# Persons	LWD	Drop Off PT./Time	Pick Up PT./Time	
1 O-320 EQPM	Cameron Eskeberg	1	10/02	Strader ICP/0700	Strader ICP/2100	
2 O-365 HEQB	Daniel Horwath	1	10/12	Strader ICP/0700	Strader ICP/2100	
3 O-358 HEQB - t	Sterling Smith	1	10/12	Strader ICP/0700	Strader ICP/2100	
4						
5 E-6 GRD1 Mark Jones	Mark Jones	2	10/09	Strader ICP/0700	Strader ICP/2100	
6 E-223 GRD1 Parkhurst Trucking	Andy Trumble	2	10/13	Strader ICP/0700	Strader ICP/0700	
7 E-224 GRD1 Rundell	Bo Ellis	2	10/13	Strader ICP/0700	Strader ICP/2100	
8						
9 E-12 VROL Mark Jones	Riley Looney	1	10/09	Strader ICP/0700	Strader ICP/2100	
10 E-225 VROL Pacific Ridgeline	Matt Miller	2	10/12	Strader ICP/0700	Strader ICP/2100	
11 E-226 VROL JLC	Kyle Peterson	1	10/12	Strader ICP/0700	Strader ICP/2100	
12						
11 E-137 WTS2 On the Go H2O	May Hernandez	1	10/01	Strader ICP/0700	Strader ICP/2100	
12 E-138 WTS2 Cowboy Fire	Chris Andreasen	1	10/06	Strader ICP/0700	Strader ICP/2100	
13 E-200 WTS2 M&M	Mark Csernak	1	09/30	Strader ICP/0700	Strader ICP/2100	
14						
15 E-227 Dump 10 Yard JLC	Danny Amon	1	10/12	Strader ICP/0700	Strader ICP/2100	
16 E-228 Dump 10 Yard JLC	Mark Angell	1	10/12	Strader ICP/0700	Strader ICP/2100	
17 E-229 T2 Backhoe JLC	Coby Patterson	1	10/12	Strader ICP/0700	Strader ICP/2100	
18						
19						
20						
21						
22						
23	<b>Meal Count</b>	<b>19</b>				
7. Control Operations: <b>TASK:</b> Maintain roadways for access and egress. Utilize Field Maps to document road repair that is ready for READ approval. <b>PURPOSE:</b> Reduce road distress and damages as outlined in Umpqua National Forest Commercial Road Use Rules and Road Use Permit Requirements document. <b>END STATE:</b> Roads are fully functional and meet forest standards.						
8. Special Instructions: Active Helispots Identified on Division Maps: Div D Dinner H 41 - Div D Grizzly H 191 - Div D Brice Creek H 161 Div H Chilcoot H 57, H 51, H 1, H 43 - Div H Ridge H 291, H 293						
9. Division/Group Communication Summary						
<b>See Communications Plan</b>						
Prepared by (Resource Unit Ldr) <i>Meredith Butcher/Jennifer Norton - t</i>			Approved by (Planning Sect. Ch.) <i>Aileen Nichols</i>		Date <b>09/29/23</b>	Time <b>2000</b>

<b>AIR OPERATIONS SUMMARY 220</b>		Prepared/Approved: Nancy Barker		Prepared Time: 1800 hrs.	
<b>1. INCIDENT NAME:</b> <b>UMPQUA FIRES</b>		<b>2. OPERATIONAL PERIOD</b> 09/30/2023		<b>START TIME:</b> 0700	<b>END TIME:</b> 1900
				<b>SUNRISE:</b> 0709	<b>SUNSET:</b> 1855

<b>3. REMARKS</b> (Safety Notes, Hazards, Air Operations Special Equipment, etc.): <b>Smoky conditions * Steep terrain * Shadow effects</b>	
All GPS data to be collected in DEGREES, DECIMAL MINUTES.	
Aircraft costs daily to: <a href="mailto:2023.chilcoot.finance@firenet.gov">2023.chilcoot.finance@firenet.gov</a> and cc to <a href="mailto:2023.chilcoot.airops@firenet.gov">2023.chilcoot.airops@firenet.gov</a>	
<b>4. READY ALERT AIRCRAFT:</b> N38HX Teton Short Haul in Grants Pass N35HX Wenatchee Short Haul in Sun River Order through Roseburg Aircraft Desk 541-957-3325	<b>5. TFRs Effective 1000-1700</b> A-78 121.3750 Div D 7000' 5 Mile <u>43°39.701'N 122°37.510'W</u> A-79 127.0000 Div H 7000' 2 Mile <u>43°24.070'N 122°44.120'W</u> A-80 127.0000 Div H 7000' 1 Mile <u>43°23.948'N 122°28.732'W</u>

6. PERSONNEL	NAME	PHONE #	7. FREQUENCIES		AM	FM
Glide Helibase						
AOBD	Nancy Barker	253-312-4301	A/A Div D TFR / Primary (A-2)	121.3750		
ASGS	Jim Dotson	307-413-2024	A/A Div H TFR (A-3)	127.0000		
ASGS-t	George Leite	360-581-8428	A/G Primary (A-4)		165.9875	
HEBM	Geoff Gillespie	760-223-0180	A/G Secondary (A-5)		173.5000	
UR 31	Greg Reidelbach	541-671-7052	Deck	Tone 156.7 (TX/RX)		163.1000
ORRIC	Aircraft Desk	541-957-3325	IA A/G 49 USFS			168.0375
FAO	Jim Dotson	307-413-2024	IA A/G 81 USFS			166.9500
			VMED29	Tone 156.7 (TX/RX)		155.3475
			CTAF			122.8
			Air Guard	Tone 110.9 (TX)		168.6250

For IA: send flight strip to [Geoffrey.Gillespie@usda.gov](mailto:Geoffrey.Gillespie@usda.gov)

FAA #	T Y	MAKE/ MODEL	BASE	START	AVAIL	REMARKS	Div D	Div H
N357KA (A-57)	1	KMAX	Glide	0700	0800	1 personnel	H-41 Dinner 43°42.493'N x 122°44.287'W	H-57 Chilcoot 43°26.132'N x 122°42.886'W
N933CH (A-39)	2	Bell 205 A1	Glide	0700	0800	14 personnel	H-161 Brice Creek 43°37.352'N x 122°31.593'W	H-51 Chilcoot 43°23.330'N x 122°42.411'W
32HX (A-20)	3	AS 350	Glide	0700	0800	9 personnel	H-191 Grizzly 43°35.017'N x 122°37.313'W	H-1 Chilcoot 43°24.915'N x 122°44.923'W
UR-31	3	Alta-X	Glide	0700		G. Reidelbach UASP O-373 A. Placencia UASP (9/30) Z. Leavitt UASP Anvil Loan J. Filkins UASD A. Ridley UASD	H-291 Ridge 43°23.840'N x 122°31.291'W	H-293 Ridge 43°24.224'N x 122°28.909'W

# INCIDENT RADIO COMMUNICATIONS PLAN (ICS 205)

1. Incident Name:		2. Date Prepared:		3. Operational Period:	
CHILCOOT/GRIZZLY/RIDGE/BRICE/DINNER		Date: 09/29/23		Date/time from: 09/30/23 0700 HRS	
				Date/Time To: 09/30/23 2100 HRS	

4. Radio Channel Use:										
Zone/ Group	Ch#	Function	Channel Name	Assignment	RX Freq	RX Tone/NAC	TX Freq	TX Tone/NA C	Mode (A/D)	Remarks
	1	TACTICAL	TAC 1	DIV D	168.0500	167.9	168.0500	167.9	A	DIVISION D
	2	TACTICAL	TAC 2	DIV H	168.2000	167.9	168.2000	167.9	A	DIVISION H
	3	TACTICAL	TAC 3	SUPPRESSION REPAIR	168.6000	167.9	168.6000	167.9	A	REPAIR
	4	TACTICAL	TAC 4	UNASSIGNED	166.7250	167.9	166.7250	167.9	A	UNASSIGNED
	5	AIR TO GROUND	A/G PRI	AIR TO GROUND PRI	165.9875	NONE	165.9875	NONE	A	AIR TO GROUND OPS, PRIMARY
	6	AIR TO GROUND	A/G SEC	AIR TO GROUND SEC	173.5000	NONE	173.5000	NONE	A	AIR TO GROUND OPS, SECONDARY
	7	COMMAND	CMD 7	ALL DIV/GRP	169.7500	167.9	167.1000	167.9	A	CMD 7-LOCATED ON SCOTT MTN
	8	COMMAND	CMD 8	ALL DIV/GRP	173.7125	167.9	162.6000	167.9	A	CMD 8- LOCATED ON PIG IRON LOOKOUT
	9	COMMAND	CMD 9	ALL DIV/GRP	173.6000	167.9	169.4625	167.9	A	CMD 9- LOCATED ON CHILCOOT MTN
NEW FREQ	10	COMMAND	CMD 10	ALL DIV/GRP	169.6125	167.9	162.5125	167.9	A	CMD 10- LOCATED ON COUGAR BLUFFS
	11	COMMAND	CMD 11	ALL DIV/GRP	170.0625	167.9	162.4375	167.9	A	CMD 11- LOCATED ON FAIRVIEW LOOKOUT
	12	TACTICAL	TAC 12	ROAD GROUP	168.2500	167.9	168.2500	167.9	A	ROAD MAINT. TAC
	13	COMMAND	CHILCOOT	ALL DIV/GRP	170.5500	103.5	164.8000	192.8	A	ROSEBURG DISPATCH
	14	COMMAND	FAIRVIEW	ALL DIV/GRP	170.5500	103.5	164.8000	173.8	A	ROSEBURG DISPATCH
	15	AIR TO GROUND	VMED29	MEDICAL	155.3475	156.7	155.3475	156.7	A	MEDICAL USE ONLY
	16	AIRGUARD	AIRGUARD	ALL	168.6250	NONE	168.6250	110.9	A	EMERGENCY USE ONLY

5. Special Instructions		CURRENT CLONE: CHIL9-30	
6. Prepared By	(Communications Unit Leader)	Name:	Bruce Hanna
Communications staffed 0600-2200		Signed:	/s/ Bruce Hanna
		Date/Time:	09/29/23 12:00

**Understanding Cultural Diversity**

We are fortunate to have a very diverse workforce working with us on these fires. Effective communication between us requires an understanding and respect of these cultural differences and permits us to build positive, productive work relationships. One communication method to consider applying is the Platinum Rule. It’s a positive approach to understanding cross-cultural differences. Try it!!

Platinum Rule: Do Unto Others As They Would Have Done Unto Themselves.

**Training**

If you have been ordered as a trainee bring me your task book along with your red card or email it to [Team13trsp@outlook.com](mailto:Team13trsp@outlook.com) and I will enter you into the training database for the fire. If you have questions feel free to call, text, email, or drop in.

Margaret Dietrich  
Human Resource Specialist/Training Specialist  
Cell 360-701-3154 or [Team13trsp@outlook.com](mailto:Team13trsp@outlook.com)



**CHECK-IN Process All Resources**

**STEP 1. Scan the QR code to fill out and submit the online check-in form.**



- Have your resource order ready, as many questions reference it.

**STEP 2. Email your MANIFEST (if appropriate).**

**Include your request number in the subject line (e.g, E-118, 0-48).**

- If you are assigned to the Grizzly, Dinner or Brice Creek incidents, email to [2023.dinner.checkin@firenet.gov](mailto:2023.dinner.checkin@firenet.gov)
- If you are assigned to the Chilcoot or Ridge incidents, email to [2023.chilcoot.checkin@firenet.gov](mailto:2023.chilcoot.checkin@firenet.gov)

**STEP 3. See Finance page in IAP for further instructions on how to check in with finance.**

**STEP 4. Complete vehicle inspection as instructed on your resource order, including contract inspection as needed.**

**If you have any issues, please contact Check-in at 971-727-5061 or by email at [2023.chilcoot.checkin@firenet.gov](mailto:2023.chilcoot.checkin@firenet.gov) or [2023.dinner.checkin@firenet.gov](mailto:2023.dinner.checkin@firenet.gov)**

# Dinner-Grizzly-Brice Creek- Chilcoot-Ridge Demob Check-Out Form

RO # \_\_\_\_\_ Resource Name \_\_\_\_\_ Fire: \_\_\_\_\_ Date: \_\_\_\_\_

## Initials

### Follow these steps in the order below:

- \_\_\_\_\_ 1. **Weed Wash** – ALL line resources that went off-road will need to go through a Weed Wash. **If not needed, proceed to step 2.**
- \_\_\_\_\_ 2. **Ground support** – Contractors must stop to sign their release inspection. The inspection is optional for agency resources. **Agency resources proceed to step 3.**
- \_\_\_\_\_ 3. **Supply** – Return any items you checked out. All units must have initials from SUPPLY confirming all equipment has been returned.
- \_\_\_\_\_ 4. **Communications** – Return any items you checked out. All units must have initials from COMMUNICATIONS confirming all radio equipment has been returned.
- \_\_\_\_\_ 5. **Finance** – Proceed to FINANCE to receive your final timesheet. Having ALL your time turned in will GREATLY speed up the process.
- \_\_\_\_\_ 6. **Demob – Final step.** Return this completed Demob Check-Out form and any Documentation to Demob/Check-in. Documentation can also be emailed to [2023.chilcoot.docs@firenet.gov](mailto:2023.chilcoot.docs@firenet.gov). Let Demob know your estimated time of departure, arrival time and destination.

When all above information had been submitted to Demob they will notify Expanded Dispatch to release you from the incident.

### ALL AIR TRAVELERS

**Submit your air request 72 hours prior to flight date through the QR code on the IAP Cover. Call 971-727-5061 for any questions or assistance.**

## DMOB LIST FOR 09/30/2023

<b>DINNER-BRICE CREEK-GRIZZLY FIRES</b>			
09/30/2023	E-20	C & K WILDLAND FIRE	PUP1
09/30/2023	E-25	NORTH PACIFIC FORESTRY, INC.	ENG6
09/30/2023	E-42	METHOW RIVER	ENG4
09/30/2023	O-11	WILDLAND FIRE MOD T2 - WARM SPRINGS	WFM2
09/30/2023	O-13	BRYANT, JEREMY	TFLD
<b>CHILCOOT-RIDGE FIRES</b>			
09/30/2023	E-33	CARDINAL MEDICAL SOLUTIONS	MESU
09/30/2023	O-290	TANGEN, SPENCER	IMET
09/30/2023	O-295	MANN, ELLIOT	RADO

## DMOB LIST FOR 10/01/2023

<b>DINNER-BRICE CREEK-GRIZZLY FIRES</b>			
10/01/2023	O-16	WHETSLER, BRIAN	TFLD
<b>CHILCOOT-RIDGE FIRES</b>			
10/01/2023	O-296	MUSUNGU, ROGERS SIMIYU	EQPM
10/01/2023	O-297	O'CONNOR, STEPHEN	EQPM
10/01/2023	O-312	SCHMIDT, JAMES	COMT

## DMOB LIST FOR 10/02/2023

<b>DINNER-BRICE CREEK-GRIZZLY FIRES</b>			
10/02/2023	E-64	ROUGH COUNTRY (AMB 5)	AMB2
<b>CHILCOOT-RIDGE FIRES</b>			
10/02/2023	E-137	ON THE GO H2O	WTS2
10/02/2023	O-328.4	MEYER, TODD DANNY	SOF2



# Extensions and Crew Swaps – NW 13

This is the Team Standard Operating procedure based on national policy

- **Resources may be demobed, regardless of crew status, if it is no longer needed.**
- Contract Crews are generally not extended unless replacement resources are scarce. Crews may swap crew members if needed by utilizing the crew swap form at the QR code below.
- Resources ordered on 'O' numbers cannot swap crew members (exception - some medical resources). These resources can extend depending on availability and needs of the incident. See Plans for a resource extension form.

## **Contracted Fireline Equipment Crew Swap Procedure**

- Contract equipment may stay on the incident until it is no longer needed, a maximum dollar amount is reached, or replacement crew members cannot be provided.
- It is the responsibility of the contract owner to track their crew members and ensure they maintain proper work/rest ratios. The IMT assumes contracted equipment will swap crew members as needed to provide adequate rest for their employees.
- Non-fireline equipment personnel (like hand wash stations) are not tracked other than a current onsite contact.
- If replacement crew members cannot be provided, this must be documented on an ICS-213 and provided to Operations and Plans at least 72 hours prior to the 14th workday. The resource will be demobed after 14 shifts OR an extension form may be completed based on operational need, see Plans for this form.
- Crew swaps MUST be tracked through the below QR code form as soon as known, no later than 1800 on the day prior to the swap. If the new crew member is the primary operator and any information in the IAP is incorrect, correct information MUST be provided to the Division Supervisor immediately following the operational briefing/division breakout.
- We prefer all members of a resource swap at once if possible. The crew swap form will need to be filled out for each individual crew member.
- Replacement workers must provide proof of current annual training upon request.

QR code link to Umpqua Fires FTP page, then find button named **Crew Swap Form**



Please contact Plans after the briefing, at their office, or at Check-in if you have questions or wish to understand how your last workday/demob date was determined.



## Resource Advisor Message

**Objectives** – One objective of the fire suppression is to repair areas disturbed by fire suppression activities into a condition that does not negatively affect natural and cultural resources and will not create excessive erosion on the landscape. Without compromising public and firefighter safety:

- Reduce the potential for soil erosion and sedimentation.
- Repair roads and drainage structures to a functioning condition.
- Avoid driving any kind of machinery on severely burned soils.
- Reduce the visual impacts of fire line as well other suppression activities when feasible.
- Avoid dragging large trees across soils, especially severely burned soils.
- Avoid driving machinery on moist soils.
- Avoid bucking up large, downed wood. Leave logs in as long of piece as possible.
- **Leave no trace.** Pack out trash if cans are overflowing, avoid leaving trash next to overflowing trash cans.

### General Road Rules

Roads can be damaged easily during rainfall events. Signs of road distress include the following:

- Surface deformities such as: potholes, soft spots, ruts, etc. greater than 2” deep
- Pooling water, indicating drainage not functioning as designed.
- Slurry or conditions that causes loss of traction.
- Utilize 4-wheel drive on gravel roads in order to reduce impacts to the road surface.

Roads with signs of distress should not be driven on. Work with REAFs to implement erosion control measures.

### General Water Bar Specifications:

- Facing the slope, standing at the bottom of a repair feature or existing water bar, the next water bar constructed should be placed at eye level.
- Water bars should be constructed into compacted soil and not constructed by simply pushing up loose soil and duff.
- Water bars should direct runoff away from the burned area where possible (into the green).
- Water bars should have out-sloped trenching at 30-45 ° from perpendicular to the fire line.
- Assure that the downslope end of the water bar is open and has adequate length to allow free flow of water off the line.
- Logs can be incorporated into water bars if they are embedded or anchored in a trench.
- Slash can be placed below outlet of water bar to help slow runoff and help collect sediment.



Do you or the public need to reach the PIOs?

Phone: (541) 900-5862

Emails:

Brice Creek/Dinner/Grizzly: [2023.dinner@firenet.gov](mailto:2023.dinner@firenet.gov)

Chilcoot/Ridge: [2023.chilcoot@firenet.gov](mailto:2023.chilcoot@firenet.gov)

Please email us your photos! (And don't forget your  
PPE 😊)



Chilcoot Fire Information



Dinner, Brice Creek and Grizzly Fires Information

## Mail

Address your mail to:

C/O (Chilcoot Fire, Your Name, Crew/RO Number, Phone Number)

North Umpqua Ranger District

18782 North Umpqua Highway

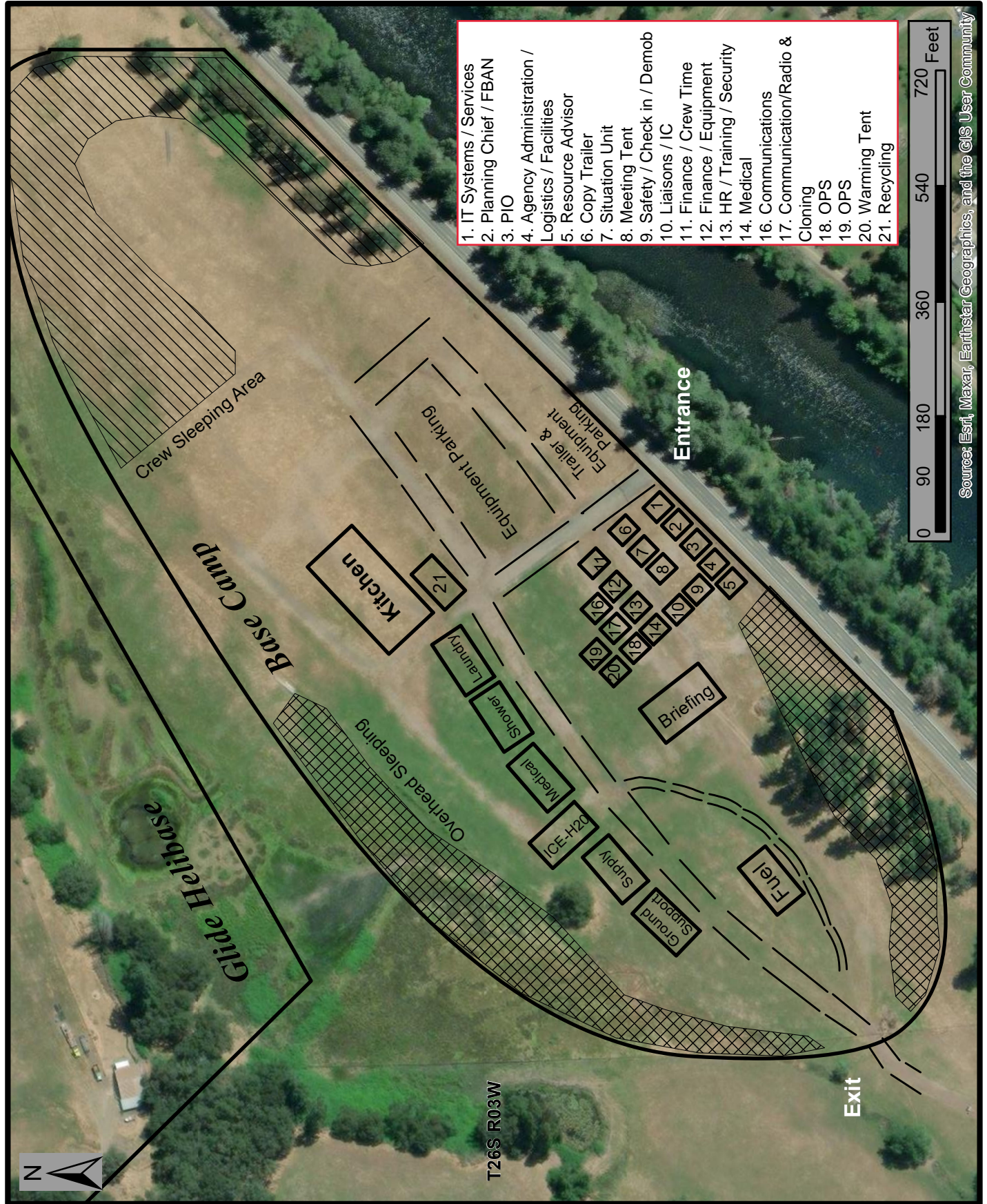
Glide, OR 97443

**Pick-up:** You will need to pick up your mail at the Umpqua Ranger District



**Call or visit our trailer at ICP if you've lost  
or found something!**

# Chilcoot ICP Basecamp Map

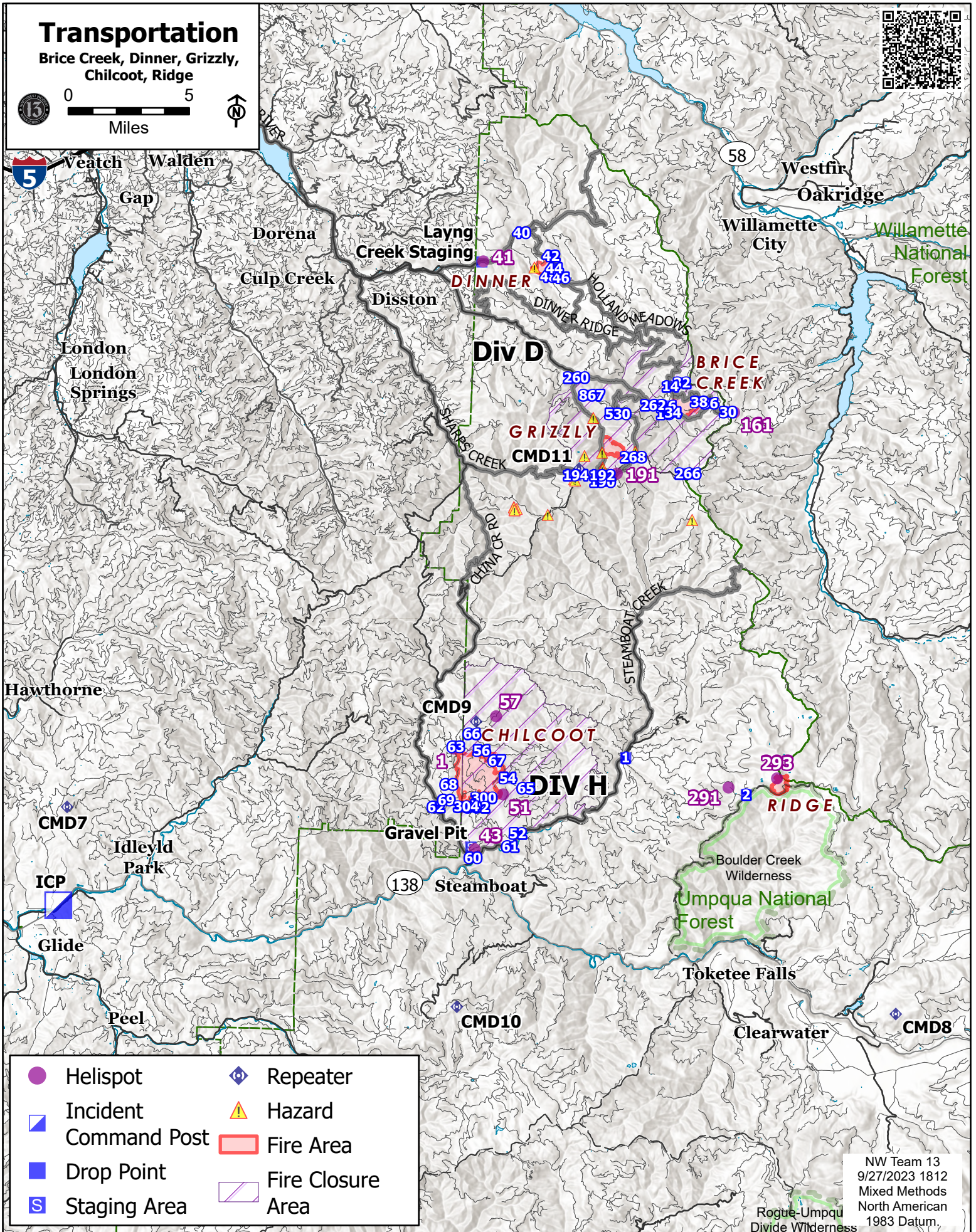


# Transportation

Brice Creek, Dinner, Grizzly, Chilcoot, Ridge



0 5  
Miles



- |  |                       |  |                   |
|--|-----------------------|--|-------------------|
|  | Helispot              |  | Repeater          |
|  | Incident Command Post |  | Hazard            |
|  | Drop Point            |  | Fire Area         |
|  | Staging Area          |  | Fire Closure Area |

NW Team 13  
9/27/2023 1812  
Mixed Methods  
North American  
1983 Datum.

**RETURN TO PLANNING OPS BY 1300 HRS**  
**Via radio (preferred method), text, email, photo, or cell phone**  
**Project for Next Operational Period and 48 & 72 hours in the Future**

<b>DIVISION PLANNING SHEET</b>		Division/ Group	Name Of Division /Group Supervisor		
Next Operational Period Date:					
Operations and Resource unit text number and e-mail					
<input type="checkbox"/> - Roll over assigned Resources <input type="checkbox"/> -Excess resources <input type="checkbox"/> -Correction to 204					
E or C number	Strike Team/Task Force/ Resource Designator	Leader	Number Persons	Comments	
<input type="checkbox"/> -Request for additional Resources					
Number	Type	Resource Kind	Number	Type	Resource Kind
Operational Projection/Resource Needs/Excess Resources (48 hours):					
Operational Projection/Resource Needs/Excess Resources (72 hours):					
Comments					







# MEDICAL PLAN (206 WF)

1. Incident/Project Name				2. Operational Period				
<b>Dinner/Grizzly/Brice Creek/Chilcoot/Ridge</b>				Date/Time: <b>9/30 0700 – 9/30 2100</b>				
3. Ambulance Services								
Name	Complete Address	Phone	Advanced Life Support (ALS)					
			Yes	No				
Umpqua Valley Ambulance	Roseburg, OR	911	X					
Glide Rural Fire Protection	Glide, OR	911	X					
4. Air Ambulance Services								
Name	Phone	Type of Aircraft & Capability						
LIFE FLIGHT	1-800-232-0911 / 911	Critical Care Team of Paramedic and RN 24 hr, 100'x100' LZ.						
REACH	1-800-338-4045	Critical Care Team of Paramedic and RN 24 hr, 100'x100' LZ.						
Teton Short Haul	Chilcoot Communications	Short Haul, Daytime-Grants Pass, OR						
Wenatchee Short Haul	Chilcoot Communications	Short Haul, Daytime-Sunriver, OR						
5. Hospitals								
Name	Degrees Decimal Minutes	Travel Time From ICP		Phone	Helipad		Level of Care	
		Air	Gnd.		Yes	No		
Mercy Health Hospital 2700 NW Stewart Pkwy Roseburg, OR 97471	Lat: 43° 14.567 N	40 Min	2 Hrs	541-673-0611	X		Level III Trauma	
	Long: 123° 21.983 W							
Sacred Heart Hospital 3333 Riverbend Dr. Springfield, OR 97477	Lat: 44° 04.876 N	1 Hr	3 Hrs	541-222-6931	X		Level II Trauma	
	Long: 123° 01.588 W							
Legacy Emanuel Hospital (Portland, OR)	Lat: 45° 32.668' N	1.5 Hrs	5 Hrs	503-413-4121	X		Level I Trauma Burn Center	
	Long: 122° 40.293' W							
<b>ICP</b>	<b>EMS Responders &amp; Capability:</b>		<b>Ben Meacham MEDL</b>			360-921-3817		
			<b>James Brown On Site Camp Paramedic</b>			360-775-5413		
	Equipment Available on Scene:		ALS Kit, LP15 defib, O2, OTC meds					
	Medical Emergency Channel:		Chilcoot Communications Plan					
	ETA for Ambulance to Scene:							
	Air:		25 Min					
	Ground:		30 Min					
	Approved Heli-Spot:							
<b>DIV D</b>	<b>EMS Responders &amp; Capability:</b>		<b>AMBO 5 Jessie Evans</b> 515-729-4993			ALS Ambulance		
			<b>REMS 3 Nolan Howell</b> 541-399-6555			ALS /UTV/Rope Rescue		
	Equipment Available on Scene:		ALS Kit, defib, O2, OTC meds					
	Medical Emergency Channel:		Chilcoot Communications Plan					
	ETA for Ambulance to Scene:							
	Air:		50 min					
	Ground:		45 min					
	Approved Heli-Spot:							
<b>DIV H</b>	<b>EMS Responders &amp; Capability:</b>		<b>AMBO 55 Lance Puig</b> 972-689-3348			ALS Ambulance		
			<b>MED MOD 1 Marcas Garcia</b> 925-321-5013			ALS/UTV		
			<b>REMS 4 Brendon Church</b> 602-370-3778			ALS/UTV/Rope Rescue		
	Equipment Available on Scene:		ALS Kit, defib, O2, OTC meds					
	Medical Emergency Channel:		Chilcoot Communications Plan					
	ETA for Ambulance to Scene:							
	Air:		50 min					
	Ground:		45 min					
<b>Suppression Repair Group</b>	<b>EMS Responders &amp; Capability:</b>		<b>EMT 11 Jed Getman</b> 541-391-3243			BLS		
	Equipment Available on Scene:		BLS Kit, defib, O2					
	Medical Emergency Channel:		Chilcoot Communications Plan					
	ETA for Ambulance to Scene:							
	Air:		50 min					
	Ground:		45 min					
	Approved Heli-Spot:							
	Long:							

Prepared By (Medical Unit Leader)	Date	Reviewed By (Safety Officer)	Date
Ben Meacham MEDL	9/29/2023	Ray Hershey SOF2	9/29/2023
Signature: Ben Meacham		Signature: Ray Hershey	

# MEDICAL PLAN (ICS 206 WF)

Controlled Unclassified Information//Basic

## Medical Incident Report

**FOR A NON-EMERGENCY INCIDENT, WORK THROUGH CHAIN OF COMMAND TO REPORT AND TRANSPORT INJURED PERSONNEL AS NECESSARY.**

**FOR A MEDICAL EMERGENCY: IDENTIFY ON-SCENE INCIDENT COMMANDER BY NAME AND POSITION AND ANNOUNCE "MEDICAL EMERGENCY" TO INITIATE RESPONSE FROM IMT COMMUNICATIONS/DISPATCH.**

**Use the following items to communicate situation to communications/dispatch.**

**1. CONTACT COMMUNICATIONS / DISPATCH** (Verify correct frequency prior to starting report)

*Ex: "Communications, Div. Alpha. Stand-by for Emergency Traffic."*

**2. INCIDENT STATUS:** Provide incident summary (including number of patients) and command structure.

*Ex: "Communications, I have a Red priority patient, unconscious, struck by a falling tree. Requesting air ambulance to Forest Road 1 at (Lat./Long.) This will be the Trout Meadow Medical, IC is TFLD Jones. EMT Smith is providing medical care."*

Severity of Emergency / Transport Priority	<input type="checkbox"/> <b>RED / PRIORITY 1 Life or limb threatening injury or illness. Evacuation need is IMMEDIATE</b> <i>Ex: Unconscious, difficulty breathing, bleeding severely, 2° – 3° burns more than 4 palm sizes, heat stroke, disoriented.</i> <input type="checkbox"/> <b>YELLOW / PRIORITY 2 Serious Injury or illness. Evacuation may be DELAYED if necessary.</b> <i>Ex: Significant trauma, unable to walk, 2° – 3° burns not more than 1-3 palm sizes.</i> <input type="checkbox"/> <b>GREEN / PRIORITY 3 Minor Injury or illness. Non-Emergency transport</b> <i>Ex: Sprains, strains, minor heat-related illness.</i>	
Nature of Injury or Illness & Mechanism of Injury		<i>Brief Summary of Injury or Illness (Ex: Unconscious, Struck by Falling Tree)</i>
Evacuation Request		<i>Air Ambulance / Short Haul/Hoist Ground Ambulance / Other</i>
Patient Location		<i>Descriptive Location &amp; Lat. / Long. (WGS84)</i>
Incident Name		<i>Geographic Name + Medical (Ex: Trout Meadow Medical)</i>
On-Scene Incident Commander		<i>Name of on-scene IC of Incident within an Incident (Ex: TFLD Jones)</i>
Patient Care		<i>Name of Care Provider (Ex: EMT Smith)</i>

**3. INITIAL PATIENT ASSESSMENT:** Complete this section for each patient as applicable (start with the most severe patient)

Patient Assessment: See IRPG PAGE 106

Treatment:

**4. EVACUATION PLAN:**

Evacuation Location (if different): (Descriptive Location (drop point, intersection, etc.) or Lat. / Long.) Patient's ETA to Evacuation Location:

Helispot / Extraction Site Size and Hazards:

**5. ADDITIONAL RESOURCES / EQUIPMENT NEEDS:**

*Example: Paramedic/EMT, crews, immobilization devices, AED, oxygen, trauma bag, IV/fluid(s), splints, rope rescue, wheeled litter, HAZMAT, extrication*

**6. COMMUNICATIONS: Identify State Air/Ground EMS Frequencies and Hospital Contacts as applicable**

Function	Channel Name/Number	Receive (RX)	Tone/NAC *	Transmit (TX)	Tone/NAC *
COMMAND					
AIR-TO-GRND					
TACTICAL					

**7. CONTINGENCY: Considerations:** If primary options fail, what actions can be implemented in conjunction with primary evacuation method? Be thinking ahead..

**8. ADDITIONAL INFORMATION:** Updates/Changes, etc.

**REMEMBER:** Confirm ETAs of resources ordered. Act according to your level of training. Be Alert. Keep Calm. Think Clearly. Act Decisively.