

DINNER-GRIZZLY-BRICE CREEK CHILCOOT-RIDGE

Incident Action Plan

Wednesday October 04, 2023

Operational Period: 0700-2100

Dinner OR-UPF-000357 P6 QLJ7 (0615)

Grizzly OR-UPF-000341 P6 QL0W (0615)

Brice Creek OR-UPF-000359 P6 QLJ4 (0615)

Ridge OR-UPF-000346 P6 QLF4 (0615)

Chilcoot OR-UPF-000345 P6 QLF5 (0615)

WA-DNR 221-ICU

- MAPS
- IAP
- CHECK-IN
- Crew Swaps



Notes

Health & Safety Message

Redundancy or Accident Avoidance

The best way to avoid accidents is to avoid circumstances that place us only one mistake away from failure (injury, close-call, fatality, accident). To do this, we surround ourselves with more than one layer of control. This is called Redundancy. These controls include the following:

- Fire Orders and 18 Watchout Situations
- Implementing LCES
- Following Standard Operating Procedures (SOP's)
- Proper use of Personal Protective Equipment
- Clear and Direct Communication
- Strength of your Situational Awareness
- Strength of your buddy's Situational Awareness
- Supervisory Control

We rarely find ourselves in a situation where none of these exist. Understand that the use of Redundancy of controls is largely what prevents unintended outcomes.

Always maintain Situational Awareness.

FINANCE MESSAGE

Finance Email: 2023.chilcoot.finance@firenet.gov or 2023.dinner.finance@firenet.gov

Finance Phones: *Contractors:* 971-245-0259 *Agency Personnel:* 971-762-8750

This incident requires electronic documentation. Please email your time to the Finance email address daily. Scanned PDF documents are preferred. Don't forget to add, in the remarks box of your CTR or shift ticket, which fire you worked on.

Required Documents

Overhead, Agency Crews & Cooperators	Contract Resources
Finance docs needed: Resource Order, Manifest, Cooperative Agreement, Casual Hire Form w/ECI# (as applicable)	Finance docs needed: Resource Order, Manifest, Full Contract/Agreement, Certifications <i>(if required)</i> Pre-Inspection
Daily: CTRs, Shift Tickets	Daily: CTRs, Shift Tickets, receipts (claims, etc.) NOTE: Document travel times and odometer readings.
Demob: Signed OF-288; Signed OF-286	Demob: Contractor Evaluations, Shift Tickets, receipt(s) for Addition/Deductions, Post-Inspection, Signed OF-286
Additional Incident Information: See cover page of the IAP for incident numbers and financial codes.	Please call finance regarding issues with your time: E-7 Timber Basin O-362 Clark E-229 JLC Contracting E-146 Phil Strader E-19 Kent Corp E-27 ASI Arden Solutions E-225 Pacific Ridge Forestry E-142 Cardinal Medical Solutions

For your entertainment...Why is dough another word for money? Because everyone kneads it!

LOGISTICS

Kitchen Hours

- Breakfast 0600 – 0900
- Dinner 1800 – 2100

Laundry

- Open 0500 – 2200
- Last day to drop off laundry is Thu 10/5 @ 1200
- Last day to pick up laundry is Fri 10/6 @ 1000

Supply

- Open 0600 – 2130

Communications #: 949-648-1591

Showers

- Open 0500 – 1200
- Open 1400 – 2200

Ground Support


- Open 0600 – 2200

Weed Wash (20016 Umpqua Hwy, turn at Bug Farm RD)

- Open 0700 – 2200

Fuel Tender

- Open 0630 – 2100

INCIDENT OBJECTIVES	1. Incident Name Chilcoot, Grizzly, Ridge, Dinner, Brice Creek	2. Date October 03, 2023	3. Time 2000
4. Operational Period: 10/04/2023 0700-2100			
<p>5. General Objectives: Implement a FULL suppression strategy for Chilcoot, Grizzly, Brice Creek, Dinner and Ridge fires:</p> <ul style="list-style-type: none"> • Provide for firefighter and public safety through hazard identification and application of a shared risk management process. • Coordinate public information to provide timely updates to agency partners, cooperators and the public. • Coordinate suppression and repair activities with READs to minimize impacts on the landscape. • Effectively manage and track costs for all five incidents. • Coordinate with agency leadership/administrators to ensure effective and efficient management of firefighting resources. <p>Chilcoot, Grizzly:</p> <ul style="list-style-type: none"> • Chilcoot: provide full incident containment through suppression actions. Grizzly: monitor and evaluate conditions that could lead to fire growth, identify and validate strategic indirect lines. • Coordinate with ODF-DFPA, as needed, for changing conditions specific to fire progression potentially impacting private lands. • Repair indirect lines not currently identified as potential containment features, identify primary line repair options as applicable. • Evaluate a PACE model for the Grizzly fire, develop near-term and long-term modeling based on future potential. • Work with partner/stakeholders (Sierra Pacific) to access, manage private lands within fire perimeter. <p>Dinner, Ridge, Brice Creek:</p> <ul style="list-style-type: none"> • Achieve full containment with suppression actions and ensure adequate mop-up is conducted to reduce the threat of escape. • Implement full repair on all indirect line construction. • Evaluate repair needs for primary line construction. • Monitor access routes "Ingress/Egress" and minimize impact to road systems. • Backhaul all equipment as applicable. 			
<p>5a. Incident Requirements</p> <ul style="list-style-type: none"> • Provide Agency Administrator updates and briefings on incident status as conditions evolve. • Firefighting operations will implement tactics that offer the highest probability of success to minimize impacts to the landscape and minimize unnecessary exposure to firefighters. • Priority values are firefighter and public safety, critical infrastructure, private land and natural resources. <p>5b. Leaders Intent</p> <ul style="list-style-type: none"> • Safety: Firefighter, public and aviation safety will be addressed through hazard/exposure risk mitigation processes. • Risk Management: Utilize an aligned risk assessment process that mitigates exposure to firefighters through evaluation of conditions during the duration of the incident. • Communication: Keep Agency Administrators and firefighters informed of strategic actions, accomplishments and challenges. • Operations: Make informed strategic/tactical decisions suppressing the fire in the right geographic locations with the appropriate resources having the highest probability of success. • Stakeholders: Collaborate with local partners, officials and landowners to provide situational updates pertinent to the fire. • Logistics: Provide support ensuring food, water and shelter for incident responders. • Human Resources: Ensure that all incident personnel are treated with dignity and respect, while having zero tolerance for harassment, alcohol, or illegal drug use. • Public Information: Provide timely and accurate information through media outlets, trap lines, briefings, community meetings and social platforms. • Finance: Monitor and communicate incident cost associated with meeting incident objectives. • Planning: Provide incident documentation, resource tracking and accurate data management. 			
6. Weather Forecast & General Safety Message for Period – See Attached			
7. Attachments (mark if attached)			
<input checked="" type="checkbox"/> Organization List - ICS 203	<input checked="" type="checkbox"/> Weather Forecast	<input checked="" type="checkbox"/> Safety Message	
<input checked="" type="checkbox"/> Div. Assignment Lists - ICS204	<input checked="" type="checkbox"/> Fire Behavior Forecast	<input type="checkbox"/> Medical Emergency Com Plan	
<input checked="" type="checkbox"/> Communications Plan - ICS 205	<input type="checkbox"/> Incident Map		
<input checked="" type="checkbox"/> Medical Plan - ICS 206	<input checked="" type="checkbox"/> Air Operations - ICS 220		
9. Prepared by Aileen Nichols	9. Approved by (Incident Commander) Brian Gales 		

ORGANIZATION ASSIGNMENT LIST	
1. Incident Name Chilcoot/Ridge/Grizzly/Dinner/Brice Creek	
2. Date October 3, 2023	3. Time 1830
4. Operational Period October 4, 2023 0700-2100	
Position	Name
NWIMT 13 LWD 10/08/2023	
5. Incident Commander and Staff	
Incident Commander	Brian Gales
Deputy Incident Commander	Eric Riener
Liaison Officer	Larry Nickey
Safety Officer	Ray Hershey
Information Officer	Randall Rishe
Deputy Information Officer	Erin Phillips
Human Resource Specialist	Margaret Dietrich
6. Agency/Organization Representative(s):	
USFS UPF Agency Administrator	David Anderson
USFS UPF Agency Administrator - t	Mark Sommer
USFS WIF Agency Administrator	Molly Juillerat
BLM Rosberg	Heather Whitman
BLM Rosberg	Mike Korn
Oregon Department of Forestry	Chris Cline
Oregon Department of Forestry	John Flannigan
DFPA	Aaron Whitely
Lead READ	Jed Hancock
Lead READ - t	Luis Palacios
7. Planning Section	
Plans Chief	Aileen Nichols
Deputy Plans Chief	Darrin Henderson
Resources Unit	Meredith Butcher
Resources Unit - t	Jennifer Norton
Documentation Unit - Virtual	Robert Wandel
Demob Unit	Laura Backlund
Situation Unit - t	Laurie Bergvall
Fire Behavior Analyst	Dean Warner
GIS Specialist	Josh Serfass
Computer Specialist	Matt Perry
Computer Specialist - t	Cassandra Heide
Strategic Operational Planner - t	Scott Brewer
8. Logistics Section	
Logistics Chief	Dave Willis
Logistics Chief - t	Cindy Preston
Security Manager	Jack Paulsen
Supply Unit Leader	Jon Byerly
Ordering Manager - t	Robert Yarnall
Communications Unit Ldr - t	Bruce Hanna
Incident Comm Mgr	Alandra Swords
Communications Tech	Brian Wolfenburger
Food Unit Leader	Pat Young
Facilities Unit Leader	Keith Yonaka
Base Camp Manager - t	Jake Zlotnick
Medical Unit Leader	Ben Meacham
Medical Unit Leader	James Brown
Ground Support Unit	Billie Hunter

9. Operations Section			
Operations (Field)		Shawn Jaca Whitney Machado - t	
Operations (Planning)		Brad Reed Tim Cawley-Murphree - t	
a. Branch			
Branch Director			
Division Supervisor	D	Grizzly Dinner Brice Creek	Matt Caldwell
Division Supervisor	H	Chilcoot Ridge	Robert Boles Kenny Peasley - t
Group Supervisor	Suppression Repair		Rob Fore/Jon Campbell Billy Turner - t
Manager	Roads		Rick Long
b. Branch			
Branch Director			
Division Supervisor			
Division Supervisor			
Division Supervisor			
Group Supervisor			
c. Night			
Division Supervisor			
d. Air Operations Branch			
Air Operations		Nancy Barker	
Air Support Group Supervisor		Jim Dotson	
Air Support Group Supervisor - t		George Leite	
10. Finance Section			
Finance Chief		Veronika Klukas	
Deputy Finance Chief		Paula James	
Cost Unit - Virtual		Lori Price	
Time Unit		Angie Chapman	
Time Unit - t		Heather Fitzpatrick	
Proc Unit Leader		Laurette Gaylord	
Proc Unit Leader - t		Eric Soto	
Equipment Time Recorder		Clay Webb	
EQTR/In Box Manager - t		Barry Purdy	
PTRC/In Box Manager - t		Leah Krandell	
PREPARED BY: Meredith Butcher			



Fire Weather Forecast



FORECAST NO: 35
FORECAST FOR: Day Shift
SHIFT DATE: 04 October 2023
DATE AND TIME ISSUED: 03 Oct 23/1800

NAME OF FIRE: Umpqua Fires
UNIT: OR-UPF
SIGNED: *Jack Messick*
 Jack Messick, IMET

WEATHER DISCUSSION: High pressure has moved over the Pacific Northwest, and this means some strong warming over the next couple of days, to more summer like conditions by Thursday. Thursday also features a drying east wind to drive down afternoon humidity to near 25 percent. Rain returns Monday morning.

TODAY:

WEATHER: Areas of valley fog during the morning, otherwise sunny.

	Maximum Temperatures	Minimum Humidity
Ridges (3500-4500 ft)	57° to 65° (Up 11°)	58% to 66% (Down ~40%)
Valleys (2500-3500 ft)	64° to 72° (Up 13°)	44% to 54% (Down ~25%)

20-FOOT WIND:

Upper slope/Ridge: Northeast 8 to 12 mph, by 1000 becoming north 4 to 12 mph gusts to 18 mph.
Mid-slope/Valley: Down valley/downslope 1 to 5 mph, becoming upslope/up valley 4 to 9 mph gusts to 14 mph.

AVIATION: Morning fog and low clouds should clear by 1000.

CWR ($\geq 0.25''$): Zero **LAL:** 1 **HAINES:** 4
INVERSION BREAK TIME/MIXING HEIGHT: Partial lifting to 4400ft elevation for the bottom.
CAMP FORECAST: **ICP:** 71F.

TONIGHT:

WEATHER: Clear.

	Minimum Temperatures	Maximum Humidity
Ridges (3500-4500 ft)	43° to 51° (Up 3°)	70% to 80% (Down ~20%)
Valleys (2500-3500 ft)	42° to 50° (Up 2°)	80% to 88% (Down ~15%)

20-FOOT WIND:

Upper slope/Ridge: North 2 to 8 mph gusts to 12 mph, by 0100 becoming east 6 to 12 mph.
Mid-slope/Valley: Up valley/upslope 2 to 7 mph, becoming downslope/down valley 3 to 9 mph.

CWR ($\geq 0.25''$): Zero **LAL:** 1 **INVERSION:** Inversion top 3600ft elevation.
CAMP FORECAST: **ICP:** 49F.

EXTENDED OUTLOOK: Thursday: Sunny. High temperature: Ridges 70° to 78°. Valleys 76° to 84°. Minimum humidity: Ridges 32% to 40%. Valleys 25% to 33%. Ridge wind southeast 8 to 14 mph gusts to 20 mph, by 1200 becoming east 8 to 14 mph gusts to 20 mph. Valley wind down valley/downslope 4 to 10 mph, becoming upslope/up valley 6 to 12 mph gusts to 18 mph. **Thursday night/Friday:** Clear/Mostly sunny. Low 50 to 60. High 74 to 86. Fair humidity recovery, then 22% to 32%. Ridge wind southeast 4 to 11 mph gusts to 21 mph. **Friday night/Saturday:** Mostly clear/mostly sunny. Low 49 to 59. High 72 to 84. Slightly higher afternoon humidity. Afternoon ridge wind west northwest 5 to 12 mph gusts to 20 mph.

Fire Behavior Forecast #35

Incident:	Number:	TYPE OF FIRE: Wildfire
Grizzly	OR-UPF-000341	DATE/TIME ISSUED: 10/3/23 1900
Chilcoot	OR-UPF-000345	OPERATIONAL PERIOD: 10/4/2023 Day Shift
Ridge	OR-UPF-000346	FBAN: Dean Warner
Dinner	OR-UPF-000357	Signed:
Brice Creek	OR-UPF-000359	

Weather Summary - See Incident Weather Forecast: Drying trend

Fuels: Fire areas are primarily composed of *Timber Litter* (TL5), and *Timber Understory* (TU5) with *moss/lichen present in most stands*. Mature conifer stands with western hemlock and Douglas-fir, often have heavy surface fuel loading. 30 to 50+ year old second growth conifer stands contain needle litter and some down woody debris. Brush and reprod are present in open stands of mature timber.

ERC and Fuel Moisture Data	Forecast ERC (Percentile)	1 hour FM % yesterday	10 hour FM % yesterday	100 hour FM % yesterday	1000 hour FM % yesterday
Division Delta	27 ⁻²⁴	34 ⁺¹⁹	34 ⁺¹⁷	25 ⁺²	23 ⁺²
Division Hotel	16 ⁻³¹	23 ⁺⁹	29 ⁺¹³	22 ⁺¹	22 ^{N_c}

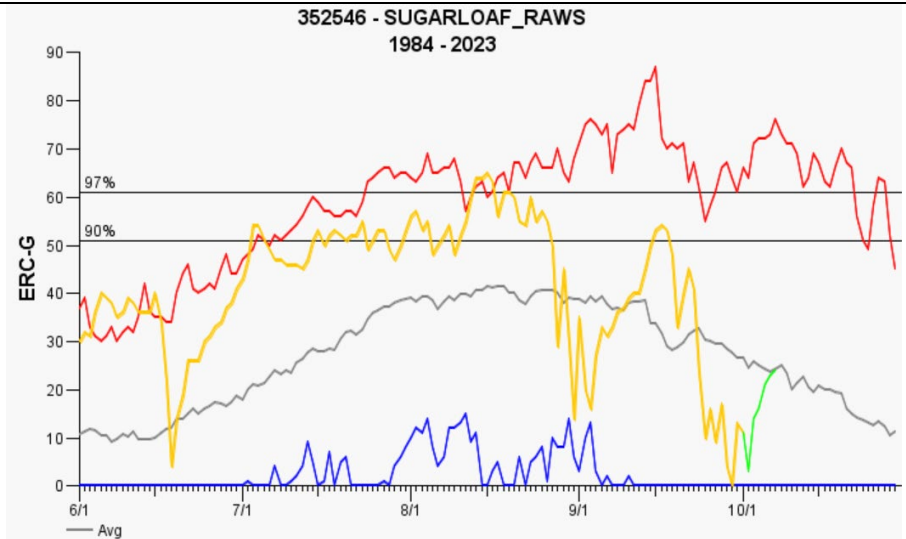
OUTPUTS: Expected Fine Dead Fuel Moisture: 9% POI: 20%

Fire Behavior: Minimal Atmosphere: Stable Max. spot distance: ¼ mile LAL: 1	Fuel/Type Model	Maximum ROS	Maximum Flame Length
	Timber Litter/TL5	3 ch/hr	2 ft.
	Timber Understory/TU5	5 ch/hr	5 ft.

Expected Fire Behavior is Based on the Warmest, Driest, Windiest Conditions Forecasted.

Today: A full day of drying is on tap today with more to come. Expect some smoke production today and a general increase as the week progresses. Heavy fuels well interior to the fire edge will continue to consume.

Potential: The ERC level will trend upward through the end of the weekend. Light fuels and lichens in exposed areas will be first to become vulnerable to consumption. After today expect a general increase in light smoke production on a daily basis throughout the week.



Air Operations

Inversion should clear by 1100.

Safety:

A warmer and drier environment will certainly lift our spirits. There may also be fewer slip hazards. The key is to not overlook all the hazards. Always remain focused.

DIVISION ASSIGNMENT LIST			1. Branch		2. Division D Dinner/Grizzly/Brice Creek	
3. Incident Name Umpqua Fires			4. Operational Period Date: 10/04/2023 Time: 0700-2100			
5. Operations Personnel						
Operations Chief		Shawn Jaca Whitney Machado - t		Division Supervisor		Matt Caldwell
Safety Officer		Ray Hershey		Air Attack		
6. Resources Assigned this Period						
Strike Team/Task Force/Resource Designator		Leader	# Persons	LWD	Drop Off PT./Time	Pick Up PT./Time
1	O-372 WFM2 Metolius	Stephen Hanson	11	10/12	Cottage Grove/0700	Cottage Grove/2100
2						
3	O-129 READ	Jed Hancock	1	10/11	Strader ICP/0700	Strader ICP/2100
4	O-352 READ – t	Luis Palacios	1	10/11	Strader ICP/0700	Strader ICP/2100
5	O-238 REAF	Chris McGrath	1	10/14	Strader ICP/0700	Strader ICP/2100
6						
7	O-328.32 EMT 58	Mark Notaras	1	10/08	Strader ICP/0700	Strader ICP/2100
8						
9						
10						
11						
12						
13						
14						
15						
16						
17						
18						
19		Meal Count	Not at ICP			
7. Control Operations: Task: Utilize UAS to identify heat near perimeter of the Grizzly, Dinner and Brice Creek fires. Monitor fire activity on Grizzly fire and take suppression actions by utilizing ground and aircraft as necessary. Continue to conduct suppression repair on the Grizzly fire. Utilize Field Maps to document suppression repair that is ready for READ approval. Purpose: Prevent fire from impacting values at risk, including communities to the west, commercial timberlands and T&E habitat. Provide for firefighter and public safety. End state: Achieve full containment on the Dinner and Brice Creek fires. Monitor the Grizzly fire and take suppression action to ensure that it stays within its current footprint. Ensure suppression repair meets turnback standards and backhaul non-essential supplies.						
8. Special Instructions: Active Helispots Identified on Division Map: Dinner H 41 Grizzly H 191 Brice Creek H 161 Evaluate the need for LUA on Grizzly fire at Crystal dip site. Identify and separate ODF supplies when returning to Supply Unit. Coordinate with ODF on finishing the structure wrap removal.						
9. Division/Group Communication Summary						
See Communications Plan						
Prepared by (Resource Unit Ldr) <i>Meredith Butcher/Jennifer Norton - t</i>		Approved by (Planning Sect. Ch.) <i>Aileen Nichols</i>		Date 10/03/2023		Time 2000

DIVISION ASSIGNMENT LIST			1. Branch		2. Division H Chilcoot/Ridge	
3. Incident Name Umpqua Fires			4. Operational Period Date: 10/04/2023 Time: 0700-2100			
5. Operations Personnel						
Operations Chief		Shawn Jaca Whitney Machado - t		Division Supervisor		Robert Boles Kenny Peasley - t
Safety Officer		Ray Hershey		Air Attack		
6. Resources Assigned this Period						
Strike Team/Task Force/Resource Designator	Leader	# Persons	LWD	Drop Off PT./Time	Pick Up PT./Time	
1 O-371 TFLD	Matthew Roby	1	10/12	Strader ICP/0700	Strader ICP/2100	
2 C-57 CR2I Mt Baker IA	Erik Usher	24	10/12	Strader ICP/0700	Strader ICP/2100	
3 C-58 CRW2 UMF Vet Crew	Andrew Goshgarian	18	10/10	Strader ICP/0700	Strader ICP/2100	
4 C-59 CR2I North Columbia	Dylan Chester	20	10/12	Strader ICP/0700	Strader ICP/2100	
5 C-60 CR2I OWF Chelan	Tyler Herdman	20	10/12	Strader ICP/0700	Strader ICP/2100	
6						
7 E-27 CHP2 ASI Arden	Rocky Katon	3	10/04	Strader ICP/0700	Strader ICP/2100	
8						
9 O-129 READ	Jed Hancock	1	10/11	Strader ICP/0700	Strader ICP/2100	
10 O-238 REAF	Chirs McGrath	1	10/14	Strader ICP/0700	Strader ICP/2100	
11 O-348 REAF	Brian Rhoten	1	10/07	Strader ICP/0700	Strader ICP/2100	
12 O-349 REAF	Craig Street	1	10/06	Strader ICP/0700	Strader ICP/2100	
13 O-350 REAF	Sophia Kim	1	10/05	Strader ICP/0700	Strader ICP/2100	
14 O-386 REAF	Cynthia Armentrout	1	10/14	Strader ICP/0700	Strader ICP/2100	
15 O-385 REAF - t	Natalie Mills	1	10/16	Strader ICP/0700	Strader ICP/2100	
16 O-381 THSP	Dan Smith	1	10/14	Strader ICP/0700	Strader ICP/2100	
17						
18 O-333 SOFR	Larry Welsch	1	10/08	Strader ICP/0700	Strader ICP/2100	
19 O-15 REMS 3	Nolan Howell	4	10/08	Strader ICP/0700	Strader ICP/2100	
20 O-360 REMS 4	Brendon Church	4	10/12	Strader ICP/0700	Strader ICP/2100	
21 E-193 AMBO 55 Front Line	Lance Puig	2	10/05	Strader ICP/0700	Strader ICP/2100	
22						
23	Meal Count	105				
7. Control Operations: Task: Conduct suppression repair on the Chilcoot fire. Utilize Field Maps to document suppression repair that is ready for READ approval. Initiate Hazard Tree Abatement plan along 3806 Road and 370 Road. Purpose: Prevent fire from impacting values at risk, including communities, commercial and T&E habitat. Provide for firefighter and public safety. Identify hazardous trees and how to reduce the risk to responders working along these roads. End state: Achieve full containment on the Chilcoot and Ridge fires. Suppression repair meets turnback standards and non-essential supplies have been back hauled. Meet Umpqua National Forest Hazard Tree Abatement Plan.						
8. Special Instructions: Active Helispots identified on Division Maps: Chilcoot H 57, H 51, H 1, H 43 Ridge H 291						
9. Division/Group Communication Summary						
See Communications Plan						
Prepared by (Resource Unit Ldr) <i>Meredith Butcher/Jennifer Norton - t</i>		Approved by (Planning Sect. Ch.) <i>Aileen Nichols</i>		Date 10/03/2023	Time 2000	

DIVISION ASSIGNMENT LIST			1. Branch		2. Division	
3. Incident Name Umpqua Fires			4. Operational Period Date: 10/04/2023 Time: 0700-2100			
5. Operations Personnel						
Operations Chief		Shawn Jaca Whitney Machado - t		Division Supervisor		Rob Fore/Jon Campbell Billy Turner - t
Safety Officer		Ray Hershey		Air Attack		
6. Resources Assigned this Period						
Strike Team/Task Force/Resource Designator	Leader	# Persons	LWD	Drop Off PT./Time	Pick Up PT./Time	
1 O-141 TFLD	Eric Bader	1	10/05	Strader ICP/0700	Strader ICP/2100	
2 O-363 TFLD	Mitchell Stiles	1	10/12	Strader ICP/0700	Strader ICP/2100	
3						
4 O-323 HEQB	William Addison	1	10/04	Strader ICP/0700	Strader ICP/2100	
5 O-353 HEQB	Anthony Weidner	1	10/12	Strader ICP/0700	Strader ICP/2100	
6 O-355 HEQB	Matthew Jones	1	10/11	Strader ICP/0700	Strader ICP/2100	
7 O-356 HEQB - t	Colin Thompson	1	10/12	Strader ICP/0700	Strader ICP/2100	
8 O-357 HEQB - t	Kyle Murphy	1	10/12	Strader ICP/0700	Strader ICP/2100	
9 O-382 HEQB - t	Garret Watson	1	10/12	Strader ICP/0700	Strader ICP/2100	
10 O-18 FMOD Toms Timber	Tom Conway	2	10/10	Strader ICP/0700	Strader ICP/2100	
11						
12 E-231 EXC2 Mark Jones	Mark Jones	2	10/15	Strader ICP/0700	Strader ICP/2100	
13 E-108 EXC3 Mark Jones	Ethan Wilding	2	10/04	Strader ICP/0700	Strader ICP/2100	
14 E-107 EXC4 Carbon Works	Brandon Wilson	2	10/05	Strader ICP/0700	Strader ICP/2100	
15 E-214 EXC4 Bob Murray Logging	Chad Mills	2	10/05	Strader ICP/0700	Strader ICP/2100	
16 E-215 EXC4 Sutphin Trucking	Cabe Foster	2	10/05	Strader ICP/0700	Strader ICP/2100	
17						
18 E-211 CHSL Pacific Ridgeline	Joseph Schlabach	2	10/12	Strader ICP/0700	Strader ICP/2100	
19 E-230 LOGL Pacific Ridgeline	Brett Miller	2	10/12	Strader ICP/0700	Strader ICP/2100	
20						
21 O-328.68 SOF2	Larry Wright	1	10/08	Strader ICP/0700	Strader ICP/2100	
22 E-142 Med MOD1 Cardinal Medical Solutions	Marcas Garcia	2	10/10	Strader ICP/0700	Strader ICP/2100	
23						
24	Meal Count	27				
7. Control Operations:						
TASK: Coordinate with Divisions to continue fire suppression repair. Ensure that READS are informed and approve completed repairs in Field Maps.						
PURPOSE: Reduce future erosion, road distress and suppression impacts.						
END STATE: Repair suppression actions meet agency standards. All identified control lines repaired are approved and documented on Field Maps by READS.						
8. Special Instructions:						
Active Helispots Identified on Division Maps:						
Div D Dinner H 41 - Div D Grizzly H 191 - Div D Brice Creek H 161						
Div H Chilcoot H 57, H 51, H 1, H 43 - Div H Ridge H 291						
9. Division/Group Communication Summary						
See Communications Plan						
Prepared by (Resource Unit Ldr)		Approved by (Planning Sect. Ch.)		Date	Time	
<i>Meredith Butcher/Jennifer Norton - t</i>		<i>Aileen Nichols</i>		10/03/2023	2000	

DIVISION ASSIGNMENT LIST			1. Branch		2. Division Suppression Repair Page 2	
3. Incident Name Umpqua Fires			4. Operational Period Date: 10/04/2023 Time: 0700-2100			
5. Operations Personnel						
Operations Chief		Shawn Jaca Whitney Machado - t		Division Supervisor		Rob Fore/Jon Campbell Billy Turner - t
Safety Officer		Ray Hershey		Air Attack		
6. Resources Assigned this Period						
Strike Team/Task Force/Resource Designator		Leader	# Persons	LWD	Drop Off PT./Time	Pick Up PT./Time
1	O-129 READ	Jed Hancock	1	10/11	Strader ICP/0700	Strader ICP/2100
2	O-352 READ - t	Luis Palacios	1	10/11	Strader ICP/0700	Strader ICP/2100
3	O-348 REAF	Brian Rhoten	1	10/07	Strader ICP/0700	Strader ICP/2100
4	O-349 REAF	Craig Street	1	10/06	Strader ICP/0700	Strader ICP/2100
5	O-350 REAF	Sophia Kim	1	10/05	Strader ICP/0700	Strader ICP/2100
6	O-386 REAF	Cynthia Armentrout	1	10/14	Strader ICP/0700	Strader ICP/2100
7	O-385 REAF - t	Natalie Mills	1	10/16	Strader ICP/0700	Strader ICP/2100
8						
9						
10						
11						
12						
13						
14						
15						
16						
17						
18						
21						
22						
23						
24						
25		Meal Count	1			
7. Control Operations: TASK: Coordinate with Divisions to continue fire suppression repair. Ensure that READS are informed and approve completed repairs in Field Maps. PURPOSE: Reduce future erosion, road distress and suppression impacts. END STATE: Repair suppression actions meet agency standards. All identified control lines repaired are approved and documented on Field Maps by READS.						
8. Special Instructions: Active Helispots Identified on Division Maps: Div D Dinner H 41 - Div D Grizzly H 191 - Div D Brice Creek H 161 Div H Chilcoot H 57, H 51, H 1, H 43 - Div H Ridge H 291						
9. Division/Group Communication Summary <p style="text-align: center;">See Communications Plan</p>						
Prepared by (Resource Unit Ldr) <i>Meredith Butcher/Jennifer Norton - t</i>		Approved by (Planning Sect. Ch.) <i>Aileen Nichols</i>			Date 10/03/2023	Time 2000

DIVISION ASSIGNMENT LIST			1. Branch		2. Division Road Group	
3. Incident Name Umpqua Fires			4. Operational Period Date: 10/04/2023 Time: 0700-2100			
5. Operations Personnel						
Operations Chief		Shawn Jaca Whitney Machado - t		Group Supervisor		Rick Long
Safety Officer		Ray Hershey		Air Attack		
6. Resources Assigned this Period						
Strike Team/Task Force/Resource Designator	Leader	# Persons	LWD	Drop Off PT./Time	Pick Up PT./Time	
1 O-362 TFLD	Robert Clark Jr	1	10/14	Strader ICP/0700	Strader ICP/2100	
2						
3 O-354 HEQB	Steven Lozano	1	10/13	Strader ICP/0700	Strader ICP/2100	
4 O-365 HEQB	Daniel Horwath	1	10/12	Strader ICP/0700	Strader ICP/2100	
5 O-358 HEQB - t	Sterling Smith	1	10/12	Strader ICP/0700	Strader ICP/2100	
6						
7 E-6 GRD1 Mark Jones	Mark Jones	2	10/09	Strader ICP/0700	Strader ICP/2100	
8 E-223 GRD1 Parkhurst Trucking	Andy Trumble	2	10/13	Strader ICP/0700	Strader ICP/0700	
9 E-224 GRD1 Rundell	Tony Ward	2	10/15	Strader ICP/0700	Strader ICP/2100	
10 E-114 EXC2 Scott Marshall	Justin Weaver	2	10/11	Strader ICP/0700	Strader ICP/2100	
11 E-12 VROL Mark Jones	Riley Looney	1	10/09	Strader ICP/0700	Strader ICP/2100	
12 E-225 VROL Pacific Ridgeline	Matt Miller	2	10/12	Strader ICP/0700	Strader ICP/2100	
13 E-226 VROL JLC	Kyle Peterson	1	10/12	Strader ICP/0700	Strader ICP/2100	
14						
15 E-227 Dump 10 Yard JLC	Danny Amon	1	10/12	Strader ICP/0700	Strader ICP/2100	
16 E-228 Dump 10 Yard JLC	Mark Angell	1	10/12	Strader ICP/0700	Strader ICP/2100	
17 E-236 Dump 10 Yard Lee Roy Belloir	Ross Belloir	1	10/16	Strader ICP/0700	Strader ICP/2100	
18 E-229 T2 Backhoe JLC	Coby Patterson	1	10/12	Strader ICP/0700	Strader ICP/2100	
19						
20 O-330 EMTF EMT 11	Jedediah Getman	1	10/04	Strader ICP/0700	Strader ICP/2100	
21						
22						
23						
24						
25		Meal Count	21			
7. Control Operations: TASK: Grade roadways that were utilized during suppression actions. Utilize Field Maps to document road repair that is ready for READ approval. PURPOSE: Reduce road distress and damages as outlined in Umpqua National Forest Commercial Road Use Rules and Road Use Permit Requirements document. END STATE: Roads are fully functional and meet forest standards.						
8. Special Instructions: Active Helispots Identified on Division Maps: Div D Dinner H 41 - Div D Grizzly H 191 - Div D Brice Creek H 161 Div H Chilcoot H 57, H 51, H 1, H 43 - Div H Ridge H 291						
9. Division/Group Communication Summary						
See Communications Plan						
Prepared by (Resource Unit Ldr) <i>Meredith Butcher/Jennifer Norton - t</i>			Approved by (Planning Sect. Ch.) <i>Aileen Nichols</i>		Date 10/03/23	Time 2000

AIR OPERATIONS SUMMARY 220		Prepared/Approved: Nancy Barker	Prepared: 10/03/2023	Prepared Time: 1800 hrs.
1. INCIDENT NAME: UMPQUA FIRES	2. OPERATIONAL PERIOD 10/04/2023	START TIME: 0700	END TIME: 1900	SUNRISE: 0713
				SUNSET: 1848

3. REMARKS (Safety Notes, Hazards, Air Operations Special Equipment, etc.):
Smoky conditions * Steep terrain * Shadow effects
 All GPS data to be collected in DEGREES, DECIMAL MINUTES.
 Aircraft costs daily to: 2023.chilcoot.finance@firenet.gov and cc to 2023.chilcoot.airops@firenet.gov

4. READY ALERT AIRCRAFT: N38HX Teton Short Haul in Grants Pass N35HX Wenatchee Short Haul in Sun River Order through Roseburg Aircraft Desk 541-957-3325	5. TFRs: Effective 1000-1700 3/7724 (A-78) 121.3750 Div D 7000' 5 Mile 43°39.701'N 122°37.510'W 3/7725 (A-79) Div H 7000' 2 Mile 127.0000 43°24.070'N 122°44.120'W 3/7726 (A-80) Div H 7000' 1 Mile 127.0000 43°23.948'N 122°28.732'W
8. FIXED-WING Avail/ Type/ Make-Model/ N#/ Base AIRTANKERS: ORDER THRU ATGS ATGS – order through Roseburg Dispatch Landing Sites on Fire: See pilot map for locations. Know the helispots near your work area. Glide Helibase 43°18.922'N X 123°04.415'W 700' TANK DIPS: See pilot map LAKE DIPS: Gertrude Lake 43°35.698'N X 122°32.452'W 3990' Crawfish Lake 43°37.502'N X 122°42.222'W 4794' Crystal Lake 43°35.602'N X 122°38.655'W 4650' Elephant Lake 43°35.742'N X 122°39.237'W 5126' Helibase Comm Trailer – Incident Response (E-19)	

7. FREQUENCIES		AM	FM
A/A Div D TFR (A-2)		121.3750	
A/A Div H TFR (A-3)		127.0000	
A/G Primary (A-4)			165.9875
A/G Secondary (A-5)			173.5000
Deck	Tone 156.7 (TX/RX)		163.1000
IA A/G 49 USFS			168.0375
IA A/G 81 USFS			166.9500
VMED29	Tone 156.7 (TX/RX)		155.3475
CTAF			122.8
Air Guard	Tone 110.9 (TX)		168.6250

FAA #	T Y	MAKE/ MODEL	BASE	START	AVAIL	REMARKS	Div D	Div H
357KA (A-57)	1	KMAX	Glide	0800	0900	1 personnel	H-41 Dinner 43°42.493'N x 122°44.287'W	H-57 Chilcoot 43°26.132'N x 122°42.886'W
933CH (A-39)	2	Bell 205 A1	Glide	0800	0900	7 personnel	H-161 Brice Creek 43°37.352'N x 122°31.593'W	H-51 Chilcoot 43°23.330'N x 122°42.411'W
UR-31	3 3	Alta X DJI M600	Glide	0700		A. Placencia UASP O-384 J. Filkins UASD O-388	H-191 Grizzly 43°35.017'N x 122°37.313'W	H-1 Chilcoot 43°24.915'N x 122°44.923'W H-43 Chilcoot 43°21.324'N x 122°43.723'W H-291 Ridge 43°23.840'N x 122°31.291'W

INCIDENT RADIO COMMUNICATIONS PLAN (ICS 205)

1. Incident Name:		2. Date Prepared:		3. Operational Period:						
CHILCOOT (CHILCOOT-GRIZZLY-RIDGE-BRICE-DINNER)		Date: 10/03/23		Date/Time from: 10/04/23 - 0700						
				Date/Time To: 10/04/23 - 2100						
4. Radio Channel Use:										
Zone/ Group	Ch#	Function	Channel Name	Assignment	RX Freq	RX Tone/NAC	TX Freq	TX Tone/NA C	Mode (A/D)	Remarks
	1	TACTICAL	TAC 1	DIV D	168.0500	167.9	168.0500	167.9	A	DIVISION D
	2	TACTICAL	TAC 2	DIV H	168.2000	167.9	168.2000	167.9	A	DIVISION H
	3	TACTICAL	TAC 3	SUPPRESSION REPAIR	168.6000	167.9	168.6000	167.9	A	REPAIR
	4	TACTICAL	TAC 4	UNASSIGNED	166.7250	167.9	166.7250	167.9	A	UNASSIGNED
	5	AIR - GROUND	A/G PRI	AIR TO GROUND PRI	165.9875	NONE	165.9875	NONE	A	AIR TO GROUND OPS, PRIMARY
	6	AIR - GROUND	A/G SEC	AIR TO GROUND SEC	173.5000	NONE	173.5000	NONE	A	AIR TO GROUND OPS, SECONDARY
	7	COMMAND	CMD 7	ALL DIV/GRP	169.7500	167.9	167.1000	167.9	A	CMD 7-LOCATED ON SCOTT MTN
	8	COMMAND	CMD 8	ALL DIV/GRP	173.7125	167.9	162.6000	167.9	A	CMD 8- LOCATED ON PIG IRON LOOKOUT
	9	COMMAND	CMD 9	ALL DIV/GRP	173.6000	167.9	169.4625	167.9	A	CMD 9- LOCATED ON CHILCOOT MTN
	10	COMMAND	CMD 10	ALL DIV/GRP	169.6125	167.9	162.5125	167.9	A	CMD 10- LOCATED ON COUGAR BLUFFS
	11	COMMAND	CMD 11	ALL DIV/GRP	170.0625	167.9	162.4375	167.9	A	CMD 11- LOCATED ON FAIRVIEW LOOKOUT
	12	TACTICAL	TAC 12	ROAD GROUP	168.2500	167.9	168.2500	167.9	A	ROAD MAINT. TAC
	13	COMMAND	CHILCOOT	ALL DIV/GRP	170.5500	103.5	164.8000	192.8	A	ROSEBURG DISPATCH
	14	COMMAND	FAIRVIEW	ALL DIV/GRP	170.5500	103.5	164.8000	173.8	A	ROSEBURG DISPATCH
	15	AIR - GROUND	VMED29	MEDICAL	155.3475	156.7	155.3475	156.7	A	MEDICAL USE ONLY
	16	AIRGUARD	AIRGUARD	ALL	168.6250	NONE	168.6250	110.9	A	EMERGENCY USE ONLY
5. Special Instructions										
CURRENT CLONE: CHIL9-30										
6. Prepared By		Name: Bruce Hanna		Signed: /s/ Bruce Hanna						
		(Communications Unit Leader)								
Communications staffed 0600-2200		CHILCOOT COMMS: (949) 648-1591		Date/Time: 10/03/23 15:00						

The behavior on this incident has been EXCELLENT! Keep it up!

Please remind your folks to practice Mutual Respect as you complete your assignments. We are all professionals here. For those of you that are new, here is a reminder of our expectations.

Each individual on this incident is responsible for:

- Being ready and able to perform their assigned duties effectively.
- Conducting themselves appropriately at all times.

There is **ZERO tolerance** for inappropriate behavior while assigned to this incident, including such conduct as:

- Drug and alcohol use
- Discrimination
- Sexual harassment
- Hostile Work Environment
- Lewd comments, off color jokes, rumor, innuendo, name calling, etc.

Consequences?

Anything less than strict adherence to these guidelines may result in immediate dismissal from the incident. IF there is anything our team can do **for you** or if you see something that needs our attention please let us know.

Margaret Dietrich
Human Resource Specialist/Training Specialist
Cell 360-701-3154 or Team13trsp@outlook.com



CHECK-IN Process All Resources

STEP 1. Scan the QR code to fill out and submit the online check-in form.

- Have your resource order ready, as many questions reference it.



STEP 2. Email your MANIFEST (if appropriate).

Include your request number in the subject line (e.g, E-118, 0-48).

- If you are assigned to the Grizzly, Dinner or Brice Creek incidents, email to 2023.dinner.checkin@firenet.gov
- If you are assigned to the Chilcoot or Ridge incidents, email to 2023.chilcoot.checkin@firenet.gov

STEP 3. See Finance page in IAP for further instructions on how to check in with finance.

STEP 4. Complete vehicle inspection as instructed on your resource order, including contract inspection as needed.

If you have any issues, please contact Check-in at 971-727-5061 or by email at 2023.chilcoot.checkin@firenet.gov or 2023.dinner.checkin@firenet.gov

Dinner-Grizzly-Brice Creek- Chilcoot-Ridge Demob Check-Out Form

RO # _____ Resource Name _____ Fire: _____ Date: _____

Initials

Follow these steps in the order below:

- _____ 1. **Weed Wash** – ALL line resources that went off-road will need to go through a Weed Wash. **If not needed, proceed to step 2.**
- _____ 2. **Ground support** – Contractors must stop to sign their release inspection. The inspection is optional for agency resources. **Agency resources proceed to step 3.**
- _____ 3. **Supply** – Return any items you checked out. All units must have initials from SUPPLY confirming all equipment has been returned.
- _____ 4. **Communications** – Return any items you checked out. All units must have initials from COMMUNICATIONS confirming all radio equipment has been returned.
- _____ 5. **Finance** – Proceed to FINANCE to receive your final timesheet. Having ALL your time turned in will GREATLY speed up the process.
- _____ 6. **Demob – Final step.** Return this completed Demob Check-Out form and any Documentation to Demob/Check-in. Documentation can also be emailed to 2023.chilcoot.docs@firenet.gov. Let Demob know your estimated time of departure, arrival time and destination.

When all above information had been submitted to Demob they will notify Expanded Dispatch to release you from the incident.

ALL AIR TRAVELERS

Submit your air request 72 hours prior to flight date through the QR code on the IAP Cover. Call 971-727-5061 for any questions or assistance.

DMOB LIST FOR 10/04/2023

DINNER-BRICE CREEK-GRIZZLY FIRES

10/04/2023 No resources demobing

CHILCOOT-RIDGE FIRES

10/04/2023	E-186	FENIX FORESTRY LLC	ENG6
10/04/2023	E-190	J3 CONTRACTING	ENG4
10/04/2023	O-316	MESSICK, JACK	IMET

DMOB LIST FOR 10/05/2023

DINNER-BRICE CREEK-GRIZZLY FIRES

10/05/2023	E-7	TIMBER BASIN CONTRACTORS	STK1
------------	-----	-----------------------------	------

10/05/2023	E-27	ASI ARDEN	CHP2
------------	------	-----------	------

CHILCOOT-RIDGE FIRES

10/05/2023	O-323	ADDISON, WILLIAM	HEQB
------------	-------	------------------	------

10/05/2023	O-330	GETMAN, JEDEDIAH	MEDL
------------	-------	------------------	------

DMOB LIST FOR 10/06/2023

DINNER-BRICE CREEK-GRIZZLY FIRES

10/06/2023 No resources demobing

CHILCOOT-RIDGE FIRES

10/06/2023	E-57	All American Emergency Services	LAU2 (laundry)
------------	------	------------------------------------	----------------

10/06/2023	E-215	SUTPHIN TRUCKING	EXC4
------------	-------	------------------	------

10/06/2023	O-349	STREET, CRAIG W	REAF
------------	-------	-----------------	------

10/06/2023	O-384	PLASCENCIA, ALEXANDER R	UASP
------------	-------	-------------------------	------

Extensions and Crew Swaps – NW 13

This is the Team Standard Operating procedure based on national policy

- **Resources may be demobed, regardless of crew status, if it is no longer needed.**
- Contract Crews are generally not extended unless replacement resources are scarce. Crews may swap crew members if needed by utilizing the crew swap form at the QR code below.
- Resources ordered on 'O' numbers cannot swap crew members (exception - some medical resources). These resources can extend depending on availability and needs of the incident. See Plans for a resource extension form.

Contracted Fireline Equipment Crew Swap Procedure

- Contract equipment may stay on the incident until it is no longer needed, a maximum dollar amount is reached, or replacement crew members cannot be provided.
- It is the responsibility of the contract owner to track their crew members and ensure they maintain proper work/rest ratios. The IMT assumes contracted equipment will swap crew members as needed to provide adequate rest for their employees.
- Non-fireline equipment personnel (like hand wash stations) are not tracked other than a current onsite contact.
- If replacement crew members cannot be provided, this must be documented on an ICS-213 and provided to Operations and Plans at least 72 hours prior to the 14th workday. The resource will be demobed after 14 shifts OR an extension form may be completed based on operational need, see Plans for this form.
- Crew swaps MUST be tracked through the below QR code form as soon as known, no later than 1800 on the day prior to the swap. If the new crew member is the primary operator and any information in the IAP is incorrect, correct information MUST be provided to the Division Supervisor immediately following the operational briefing/division breakout.
- We prefer all members of a resource swap at once if possible. The crew swap form will need to be filled out for each individual crew member.
- Replacement workers must provide proof of current annual training upon request.

QR code link to Umpqua Fires FTP page, then find button named **Crew Swap Form**



Please contact Plans after the briefing, at their office, or at Check-in if you have questions or wish to understand how your last workday/demob date was determined.



Resource Advisor Message

Objectives – One objective of the fire suppression is to repair areas disturbed by fire suppression activities into a condition that does not negatively affect natural and cultural resources and will not create excessive erosion on the landscape. Without compromising public and firefighter safety:

- Reduce the potential for soil erosion and sedimentation.
- Repair roads and drainage structures to a functioning condition.
- Avoid driving any kind of machinery on severely burned soils.
- Reduce the visual impacts of fire line as well other suppression activities when feasible.
- Avoid dragging large trees across soils, especially severely burned soils.
- Avoid driving machinery on moist soils.
- Avoid bucking up large, downed wood. Leave logs in as long of piece as possible.
- **Leave no trace.** Pack out trash if cans are overflowing, avoid leaving trash next to overflowing trash cans.

General Road Rules

Roads can be damaged easily during rainfall events. Signs of road distress include the following:

- Surface deformities such as: potholes, soft spots, ruts, etc. greater than 2" deep
- Pooling water, indicating drainage not functioning as designed.
- Slurry or conditions that causes loss of traction.
- Utilize 4-wheel drive on gravel roads in order to reduce impacts to the road surface.

Roads with signs of distress should not be driven on. Work with REAFs to implement erosion control measures.

General Water Bar Specifications:

- Facing the slope, standing at the bottom of a repair feature or existing water bar, the next water bar constructed should be placed at eye level.
- Water bars should be constructed into compacted soil and not constructed by simply pushing up loose soil and duff.
- Water bars should direct runoff away from the burned area where possible (into the green).
- Water bars should have out-sloped trenching at 30-45 ° from perpendicular to the fire line.
- Assure that the downslope end of the water bar is open and has adequate length to allow free flow of water off the line.
- Logs can be incorporated into water bars if they are embedded or anchored in a trench.
- Slash can be placed below outlet of water bar to help slow runoff and help collect sediment.



Do you or the public need to reach the PIOs?

Phone: (541) 900-5862

Emails:

Brice Creek/Dinner/Grizzly: 2023.dinner@firenet.gov

Chilcoot/Ridge: 2023.chilcoot@firenet.gov

Please email us your photos! (And don't forget your
PPE 😊)



Chilcoot Fire Information



Dinner, Brice Creek and Grizzly Fires Information

Mail

Address your mail to:

C/O (Chilcoot Fire, Your Name, Crew/RO Number, Phone Number)

North Umpqua Ranger District

18782 North Umpqua Highway

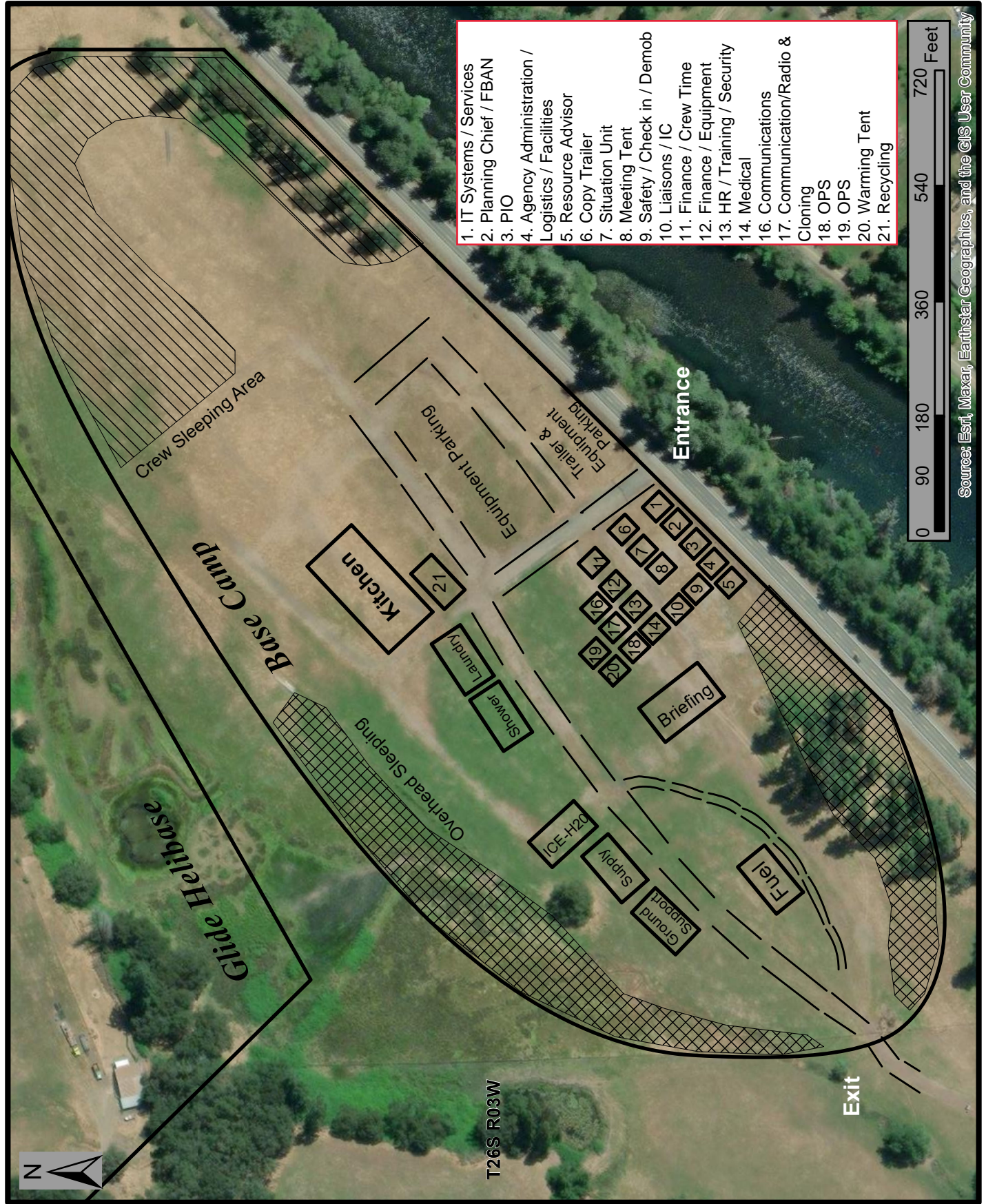
Glide, OR 97443

Pick-up: You will need to pick up your mail at the Umpqua Ranger District



**Call or visit our trailer at ICP if you've lost
or found something!**

Chilcoot ICP Basecamp Map



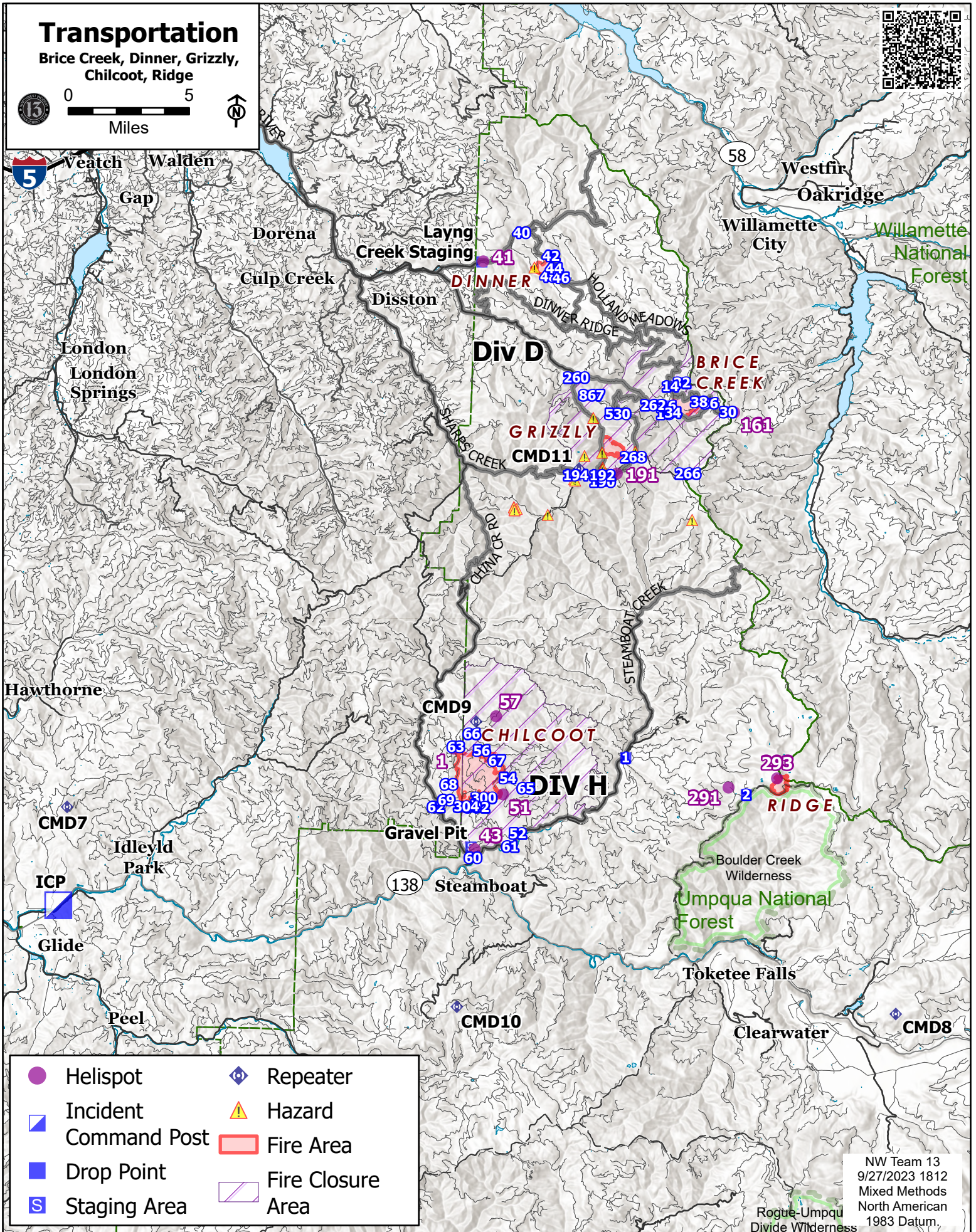
Source: Esri, Maxar, Earthstar Geographics, and the GIS User Community

Transportation

Brice Creek, Dinner, Grizzly, Chilcoot, Ridge



0 5
Miles



- | | |
|-----------------------|-------------------|
| Helispot | Repeater |
| Incident Command Post | Hazard |
| Drop Point | Fire Area |
| Staging Area | Fire Closure Area |

NW Team 13
9/27/2023 1812
Mixed Methods
North American
1983 Datum.

RETURN TO PLANNING OPS BY 1300 HRS
Via radio (preferred method), text, email, photo, or cell phone
Project for Next Operational Period and 48 & 72 hours in the Future

DIVISION PLANNING SHEET		Division/ Group	Name Of Division /Group Supervisor		
Next Operational Period Date:					
Operations and Resource unit text number and e-mail					
<input type="checkbox"/> - Roll over assigned Resources <input type="checkbox"/> -Excess resources <input type="checkbox"/> -Correction to 204					
E or C number	Strike Team/Task Force/ Resource Designator	Leader	Number Persons	Comments	
<input type="checkbox"/> -Request for additional Resources					
Number	Type	Resource Kind	Number	Type	Resource Kind
Operational Projection/Resource Needs/Excess Resources (48 hours):					
Operational Projection/Resource Needs/Excess Resources (72 hours):					
Comments					

MEDICAL PLAN (206 WF)

1. Incident/Project Name				2. Operational Period				
Dinner/Grizzly/Brice Creek/Chilcoot/Ridge				Date/Time: 10/04 0700 – 10/04 2100				
3. Ambulance Services								
Name	Complete Address	Phone	Advanced Life Support (ALS)					
			Yes	No				
Umpqua Valley Ambulance	Roseburg, OR	911	X					
Glide Rural Fire Protection	Glide, OR	911	X					
4. Air Ambulance Services								
Name	Phone	Type of Aircraft & Capability						
LIFE FLIGHT	1-800-232-0911 / 911	Critical Care Team of Paramedic and RN 24 hr, 100'x100' LZ.						
REACH	1-800-338-4045	Critical Care Team of Paramedic and RN 24 hr, 100'x100' LZ.						
Teton Short Haul	Chilcoot Communications	Short Haul, Daytime-Cape Blanco, OR						
Wenatchee Short Haul	Chilcoot Communications	Short Haul, Daytime-Sunriver, OR						
5. Hospitals								
Name	Degrees Decimal Minutes	Travel Time From ICP		Phone	Helipad		Level of Care	
		Air	Gnd.		Yes	No		
Mercy Health Hospital 2700 NW Stewart Pkwy Roseburg, OR 97471	Lat: 43° 14.567' N	40 Min	2 Hrs	541-673-0611	X		Level III Trauma	
	Long: 123° 21.983' W							
Sacred Heart Hospital 3333 Riverbend Dr. Springfield, OR 97477	Lat: 44° 04.876' N	1 Hr	3 Hrs	541-222-6931	X		Level II Trauma	
	Long: 123° 01.588' W							
Legacy Emanuel Hospital (Portland, OR)	Lat: 45° 32.668' N	1.5 Hrs	5 Hrs	503-413-4121	X		Level I Trauma Burn Center	
	Long: 122° 40.293' W							
ICP	EMS Responders & Capability:			Ben Meacham MEDL		360-921-3817		
				James Brown (On Site Camp Paramedic)		360-775-5413		
	Equipment Available on Scene:			ALS Kit, LP15 defib, O2, OTC meds				
	Medical Emergency Channel:			Chilcoot Communications Plan				
	ETA for Ambulance to Scene:							
	Air:			25 Min				
	Ground:			30 Min				
Approved Heli-Spot:								
DIV D	EMS Responders & Capability:			EMT 58 Mark Notaras		509-386-7860 BLS		
	Equipment Available on Scene:			BLS Kit, defib, O2				
	Medical Emergency Channel:			Chilcoot Communications Plan				
	ETA for Ambulance to Scene:							
	Air:			50 min				
	Ground:			1 Hr				
	Approved Heli-Spot:							
DIV H	EMS Responders & Capability:			AMBO 55 Lance Puig		972-689-3348 ALS Ambulance		
				REMS 3 Nolan Howell		541-399-6555 ALS /UTV/Rope Rescue		
				REMS 4 Brendon Church		602-370-3778 ALS/UTV/Rope Rescue		
	Equipment Available on Scene:			ALS Kit, defib, O2, OTC meds				
	Medical Emergency Channel:			Chilcoot Communications Plan				
	ETA for Ambulance to Scene:							
	Air:			50 min				
Ground:			45 min					
Approved Heli-Spot:								
Suppression Repair Group	EMS Responders & Capability:			MED MOD 1 Marcas Garcia		925-321-5013 ALS/UTV		
	Equipment Available on Scene:			ALS Kit, defib, O2				
	Medical Emergency Channel:			Chilcoot Communications Plan				
	ETA for Ambulance to Scene:							
	Air:			50 min				
	Ground:			45 min				
	Approved Heli-Spot:							
Roads Group	EMS Responders & Capability:			EMT 11 Jed Getman		541-391-3243 BLS		
	Equipment Available on Scene:			BLS Kit, defib, O2				
	Medical Emergency Channel:			Chilcoot Communications Plan				
	ETA for Ambulance to Scene:							
	Air:			50 min				
	Ground:			45 min				
	Approved Heli-Spot:							

Prepared By (Medical Unit Leader)	Date	Reviewed By (Safety Officer)	Date
Ben Meacham MEDL	10/03/2023	Ray Hershey SOF2	10/03/2023
Signature: Ben Meacham		Signature: Ray Hershey	

MEDICAL PLAN (ICS 206 WF)

Controlled Unclassified Information//Basic

Medical Incident Report

FOR A NON-EMERGENCY INCIDENT, WORK THROUGH CHAIN OF COMMAND TO REPORT AND TRANSPORT INJURED PERSONNEL AS NECESSARY.

FOR A MEDICAL EMERGENCY: IDENTIFY ON-SCENE INCIDENT COMMANDER BY NAME AND POSITION AND ANNOUNCE "MEDICAL EMERGENCY" TO INITIATE RESPONSE FROM IMT COMMUNICATIONS/DISPATCH.

Use the following items to communicate situation to communications/dispatch.

1. CONTACT COMMUNICATIONS / DISPATCH (Verify correct frequency prior to starting report)

Ex: "Communications, Div. Alpha. Stand-by for Emergency Traffic."

2. INCIDENT STATUS: Provide incident summary (including number of patients) and command structure.

Ex: "Communications, I have a Red priority patient, unconscious, struck by a falling tree. Requesting air ambulance to Forest Road 1 at (Lat./Long.) This will be the Trout Meadow Medical, IC is TFLD Jones. EMT Smith is providing medical care."

Severity of Emergency / Transport Priority	<input type="checkbox"/> RED / PRIORITY 1 Life or limb threatening injury or illness. Evacuation need is IMMEDIATE <i>Ex: Unconscious, difficulty breathing, bleeding severely, 2° – 3° burns more than 4 palm sizes, heat stroke, disoriented.</i> <input type="checkbox"/> YELLOW / PRIORITY 2 Serious Injury or illness. Evacuation may be DELAYED if necessary. <i>Ex: Significant trauma, unable to walk, 2° – 3° burns not more than 1-3 palm sizes.</i> <input type="checkbox"/> GREEN / PRIORITY 3 Minor Injury or illness. Non-Emergency transport <i>Ex: Sprains, strains, minor heat-related illness.</i>	
Nature of Injury or Illness & Mechanism of Injury		<i>Brief Summary of Injury or Illness (Ex: Unconscious, Struck by Falling Tree)</i>
Evacuation Request		<i>Air Ambulance / Short Haul/Hoist Ground Ambulance / Other</i>
Patient Location		<i>Descriptive Location & Lat. / Long. (WGS84)</i>
Incident Name		<i>Geographic Name + Medical (Ex: Trout Meadow Medical)</i>
On-Scene Incident Commander		<i>Name of on-scene IC of Incident within an Incident (Ex: TFLD Jones)</i>
Patient Care		<i>Name of Care Provider (Ex: EMT Smith)</i>

3. INITIAL PATIENT ASSESSMENT: Complete this section for each patient as applicable (start with the most severe patient)

Patient Assessment: See IRPG PAGE 106

Treatment:

4. EVACUATION PLAN:

Evacuation Location (if different): (Descriptive Location (drop point, intersection, etc.) or Lat. / Long.) Patient's ETA to Evacuation Location:

Helispot / Extraction Site Size and Hazards:

5. ADDITIONAL RESOURCES / EQUIPMENT NEEDS:

Example: Paramedic/EMT, crews, immobilization devices, AED, oxygen, trauma bag, IV/fluid(s), splints, rope rescue, wheeled litter, HAZMAT, extrication

6. COMMUNICATIONS: Identify State Air/Ground EMS Frequencies and Hospital Contacts as applicable

Function	Channel Name/Number	Receive (RX)	Tone/NAC *	Transmit (TX)	Tone/NAC *
COMMAND					
AIR-TO-GRND					
TACTICAL					

7. CONTINGENCY: Considerations: If primary options fail, what actions can be implemented in conjunction with primary evacuation method? Be thinking ahead..

8. ADDITIONAL INFORMATION: Updates/Changes, etc.

REMEMBER: Confirm ETAs of resources ordered. Act according to your level of training. Be Alert. Keep Calm. Think Clearly. Act Decisively.