



## FINANCE MESSAGE

**Finance Email:** [2023.chilcoot.finance@firenet.gov](mailto:2023.chilcoot.finance@firenet.gov) or [2023.dinner.finance@firenet.gov](mailto:2023.dinner.finance@firenet.gov)

**Finance Phones:** *Contractors:* 971-245-0259 *Agency Personnel:* 971-762-8750

**This incident requires electronic documentation.** Please email your time to the Finance email address daily. Scanned PDF documents are preferred. Don't forget to add, in the remarks box of your CTR or shift ticket, which fire you worked on.

### Required Documents

Overhead, Agency Crews & Cooperators	Contract Resources
<b>Finance docs needed:</b> Resource Order, Manifest, Cooperative Agreement, Casual Hire Form w/ECI# (as applicable)	<b>Finance docs needed:</b> Resource Order, Manifest, Full Contract/Agreement, Certifications <i>(if required)</i> Pre-Inspection
<b>Daily:</b> CTRs, Shift Tickets	<b>Daily:</b> CTRs, Shift Tickets, receipts (claims, etc.) <b>NOTE: Document travel times and odometer readings.</b>
<b>Demob:</b> Signed OF-288; Signed OF-286	<b>Demob:</b> Contractor Evaluations, Shift Tickets, receipt(s) for Addition/Deductions, Post-Inspection, Signed OF-286
<b>Additional Incident Information:</b>  See cover page of the IAP for incident numbers and financial codes.	<b>Please call finance regarding issues with your time:</b> E-19 Kent Corp                      E-214 Bob Murray Logging E-215 Sutphin Trucking          E-236 Lee Roy Belloir & Son O-18 Toms Timber E-231 Mark Jones Trucking

For your entertainment...When does it rain money? When there is "change" in the weather!

## LOGISTICS

### Kitchen Hours

- Breakfast 0600 – 0900
- Dinner 1800 – 2100

### Laundry

- Pick up laundry today by 10:00

### Supply

- Open 0600 – 2130

**Communications #: 949-648-1591**

### Showers

- Open 0500 – 1200
- Open 1400 – 2200

### Ground Support


- Open 0600 – 2200

### Weed Wash (20016 Umpqua Hwy, turn at Bug Farm RD)

- Open 0700 – 2200

### Fuel Tender

- Open 0630 – 2100

<b>INCIDENT OBJECTIVES</b>	<b>1. Incident Name</b> Chilcoot, Grizzly, Ridge, Dinner, Brice Creek	<b>2. Date</b> October 06, 2023	<b>3. Time</b> 2000
<b>4. Operational Period: 10/07/2023 0700-2100</b>			
<b>5. General Objectives:</b> Implement a FULL suppression strategy for Chilcoot, Grizzly, Brice Creek, Dinner and Ridge fires: <ul style="list-style-type: none"> <li>• Provide for firefighter and public safety through hazard identification and application of a shared risk management process.</li> <li>• Coordinate public information to provide timely updates to agency partners, cooperators and the public.</li> <li>• Coordinate suppression and repair activities with READs to minimize impacts on the landscape.</li> <li>• Effectively manage and track costs for all five incidents.</li> <li>• Coordinate with agency leadership/administrators to ensure effective and efficient management of firefighting resources.</li> </ul> Chilcoot, Grizzly: <ul style="list-style-type: none"> <li>• Chilcoot: provide full incident containment through suppression actions. Grizzly: monitor and evaluate conditions that could lead to fire growth, identify and validate strategic indirect lines.</li> <li>• Coordinate with ODF-DFPA, as needed, for changing conditions specific to fire progression potentially impacting private lands.</li> <li>• Repair indirect lines not currently identified as potential containment features, identify primary line repair options as applicable.</li> <li>• Evaluate a PACE model for the Grizzly fire, develop near-term and long-term modeling based on future potential.</li> <li>• Work with partner/stakeholders (Sierra Pacific) to access, manage private lands within fire perimeter.</li> </ul> Dinner, Ridge, Brice Creek: <ul style="list-style-type: none"> <li>• Achieve full containment with suppression actions and ensure adequate mop-up is conducted to reduce the threat of escape.</li> <li>• Implement full repair on all indirect line construction.</li> <li>• Evaluate repair needs for primary line construction.</li> <li>• Monitor access routes "Ingress/Egress" and minimize impact to road systems.</li> <li>• Backhaul all equipment as applicable.</li> </ul>			
<b>5a. Incident Requirements</b> <ul style="list-style-type: none"> <li>• Priority values are firefighter and public safety, critical infrastructure, private land and natural resources.</li> <li>• Provide Agency Administrator updates and briefings on incident status as conditions evolve.</li> <li>• Firefighting operations will implement tactics that offer the highest probability of success to minimize impacts to the landscape and minimize unnecessary exposure to firefighters.</li> </ul>			
<b>5b. Leaders Intent</b> <ul style="list-style-type: none"> <li>• <b>Safety:</b> Firefighter, public and aviation safety will be addressed through hazard/exposure risk mitigation processes.</li> <li>• <b>Risk Management:</b> Utilize an aligned risk assessment process that mitigates exposure to firefighters through evaluation of conditions during the duration of the incident.</li> <li>• <b>Communication:</b> Keep Agency Administrators and firefighters informed of strategic actions, accomplishments and challenges.</li> <li>• <b>Operations:</b> Make informed strategic/tactical decisions suppressing the fire in the right geographic locations with the appropriate resources having the highest probability of success.</li> <li>• <b>Stakeholders:</b> Collaborate with local partners, officials and landowners to provide situational updates pertinent to the fire.</li> <li>• <b>Logistics:</b> Provide support ensuring food, water and shelter for incident responders.</li> <li>• <b>Human Resources:</b> Ensure that all incident personnel are treated with dignity and respect, while having zero tolerance for harassment, alcohol, or illegal drug use.</li> <li>• <b>Public Information:</b> Provide timely and accurate information through media outlets, trap lines, briefings, community meetings and social platforms.</li> <li>• <b>Finance:</b> Monitor and communicate incident cost associated with meeting incident objectives.</li> <li>• <b>Planning:</b> Provide incident documentation, resource tracking and accurate data management.</li> </ul>			
<b>6. Weather Forecast &amp; General Safety Message for Period – See Attached</b>			
<b>7. Attachments (mark if attached)</b>			
<input checked="" type="checkbox"/> Organization List - ICS 203	<input checked="" type="checkbox"/> Weather Forecast	<input checked="" type="checkbox"/> Safety Message	
<input checked="" type="checkbox"/> Div. Assignment Lists - ICS204	<input checked="" type="checkbox"/> Fire Behavior Forecast	<input type="checkbox"/> Medical Emergency Com Plan	
<input checked="" type="checkbox"/> Communications Plan - ICS 205	<input type="checkbox"/> Incident Map		
<input checked="" type="checkbox"/> Medical Plan - ICS 206	<input checked="" type="checkbox"/> Air Operations - ICS 220		
<b>9. Prepared by</b> Aileen Nichols	<b>9. Approved by (Incident Commander)</b> Brian Gales 		

<b>ORGANIZATION ASSIGNMENT LIST</b>	
1. Incident Name <b>Chilcoot/Ridge/Grizzly/Dinner/Brice Creek</b>	
2. Date <b>October 6, 2023</b>	3. Time <b>1830</b>
4. Operational Period <b>October 7, 2023 0700-2100</b>	
Position	Name
<b>NWIMT 13 LWD 10/08/2023</b>	
5. Incident Commander and Staff	
Incident Commander	<b>Brian Gales</b>
Deputy Incident Commander	<b>Eric Riener</b>
Liaison Officer	<b>Larry Nickey</b>
Safety Officer	<b>Ray Hershey</b>
Information Officer	<b>Randall Rische</b>
Deputy Information Officer	<b>Erin Phillips</b>
Human Resource Specialist	<b>Margaret Dietrich</b>
6. Agency/Organization Representative(s):	
USFS UPF Agency Administrator	<b>David Anderson</b>
USFS UPF Agency Administrator - t	<b>Mark Sommer</b>
USFS WIF Agency Administrator	<b>Molly Juillerat</b>
BLM Rosberg	<b>Heather Whitman</b>
BLM Rosberg	<b>Mike Korn</b>
Oregon Department of Forestry	<b>Chris Cline</b>
Oregon Department of Forestry	<b>John Flannigan</b>
DFPA	<b>Aaron Whitely</b>
Lead READ	<b>Jed Hancock</b>
Lead READ - t	<b>Luis Palacios</b>
7. Planning Section	
Plans Chief	<b>Aileen Nichols</b>
Deputy Plans Chief	<b>Darrin Henderson</b>
Resources Unit	<b>Meredith Butcher</b>
Resources Unit - t	<b>Jennifer Norton</b>
Documentation Unit - Virtual	<b>Robert Wandel</b>
Demob Unit	<b>Laura Backlund</b>
Situation Unit - t	<b>Laurie Bergvall</b>
Fire Behavior Analyst	<b>Dean Warner</b>
Computer Specialist	<b>Matt Perry</b>
Computer Specialist - t	<b>Cassandra Heide</b>
Strategic Operational Planner - t	<b>Scott Brewer</b>
8. Logistics Section	
Logistics Chief - t	<b>Cindy Preston</b>
Security Manager	<b>Jack Paulsen</b>
Supply Unit Leader	<b>Jon Byerly</b>
Ordering Manager - t	<b>Robert Yarnall</b>
Communications Unit Ldr - t	<b>Bruce Hanna</b>
Incident Comm Mgr	<b>Alandra Swords</b>
Communications Tech	<b>Brian Wolfenburger</b>
Food Unit Leader	<b>Pat Young</b>
Facilities Unit Leader	<b>Keith Yonaka</b>
Base Camp Manager - t	<b>Jake Zlotnick</b>
Medical Unit Leader	<b>Ben Meacham</b>
Medical Unit Leader	<b>James Brown</b>
Field Medical Unit Leader	<b>Mark Notaras</b>
Ground Support Unit	<b>Billie Hunter</b>

9. Operations Section			
Operations (Field)		<b>Shawn Jaca</b> <b>Whitney Machado - t</b>	
Operations (Planning)		<b>Brad Reed</b> <b>Tim Cawley-Murphree - t</b>	
a. Branch			
Branch Director			
Division Supervisor	<b>D</b>	<b>Grizzly Dinner Brice Creek</b>	<b>Jon Campbell</b> <b>Billy Turner - t</b>
Division Supervisor	<b>H</b>	<b>Chilcoot Ridge</b>	<b>Robert Boles</b> <b>Kenny Peasley - t</b>
Manager	<b>Staging Area</b>		<b>Rick Long</b>
b. Branch			
Branch Director			
Division Supervisor			
Division Supervisor			
Division Supervisor			
Group Supervisor			
c. Night			
Division Supervisor			
d. Air Operations Branch			
Air Operations		<b>Nancy Barker</b>	
Air Support Group Supervisor		<b>Jim Dotson</b>	
Air Support Group Supervisor - t		<b>George Leite</b>	
10. Finance Section			
Finance Chief		<b>Veronika Klukas</b>	
Deputy Finance Chief		<b>Paula James</b>	
Cost Unit - Virtual		<b>Lori Price</b>	
Proc Unit Leader		<b>Laurette Gaylord</b>	
Proc Unit Leader - t		<b>Eric Soto</b>	
Equipment Time Recorder		<b>Clay Webb</b>	
EQTR/In Box Manager - t		<b>Barry Purdy</b>	
PTRC/In Box Manager - t		<b>Leah Krandell</b>	
<b>PREPARED BY: Meredith Butcher</b>			

Spot Forecast for Chilcoot/Grizzly...NW IMT 13  
National Weather Service MEDFORD OR - 258 PM PDT Fri Oct 6 2023

Forecast is based on forecast start time of 0600 PDT on October 07.  
If conditions become unrepresentative...contact the National Weather Service.

**.DISCUSSION..**Wind flow shifts southerly during the weekend with temperatures trending slightly cooler. A cold front is anticipated to move through the region Monday into Tuesday, likely producing gusty winds ahead of wetting rains for much of the area. Rainfall amounts from Monday morning through Tuesday afternoon of 0.80 to 1.20 inches are expected.

**.SATURDAY...**

Sky/weather.....Sunny (0-5 percent).  
Max temperature.....Around 81.  
Min humidity.....28 percent.  
Wind (20 ft).....Light winds becoming southwest 5 to 6 mph in  
the afternoon.  
Mixing height.....8000 ft AGL.  
CWR.....0 percent.  
LAL.....1.

**.SATURDAY NIGHT...**

Sky/weather.....Clear (0-10 percent).  
Min temperature.....Around 55.  
Max humidity.....80 percent.  
Wind (20 ft).....North winds 5 to 6 mph in the evening becoming  
light.  
Mixing height.....100 ft AGL.  
CWR.....0 percent.  
LAL.....1.

**.SUNDAY...**

Sky/weather.....Partly sunny (50-60 percent) then becoming  
sunny (5-15 percent).  
Max temperature.....Around 77.  
Min humidity.....30 percent.  
Wind (20 ft).....Light winds becoming southwest 5 to 8 mph in  
the afternoon.  
Mixing height.....7200 ft AGL.  
CWR.....0 percent.  
LAL.....1.

### Fire Behavior Forecast #38

<b>Incident:</b>	<b>Number:</b>	<b>TYPE OF FIRE:</b> Wildfire
Grizzly	OR-UPF-000341	<b>DATE/TIME ISSUED:</b> 10/6/23 1900
Chilcoot	OR-UPF-000345	<b>OPERATIONAL PERIOD:</b> 10/7/2023 Day Shift
Ridge	OR-UPF-000346	<b>FBAN:</b> Dean Warner
Dinner	OR-UPF-000357	<b>Signed:</b>
Brice Creek	OR-UPF-000359	

**Weather Summary** - See Incident Weather Forecast: Drying trend, rain returns Monday.

**Fuels:** Fire areas are primarily composed of *Timber Litter* (TL5), and *Timber Understory* (TU5) with *moss/lichen present in most stands*. Mature conifer stands with western hemlock and Douglas-fir, often have heavy surface fuel loading. 30 to 50+ year old second growth conifer stands contain needle litter and some down woody debris. Brush and reprod are present in open stands of mature timber.

ERC and Fuel Moisture Data	Forecast ERC (Percentile)	1 hour FM % yesterday	10 hour FM % yesterday	100 hour FM % yesterday	1000 hour FM % yesterday
Division Delta	68 <sup>+11</sup>	7 <sup>N<sub>C</sub></sup>	10 <sup>-2</sup>	16 <sup>-5</sup>	22 <sup>-1</sup>
Division Hotel	59 <sup>+16</sup>	9 <sup>-2</sup>	12 <sup>-5</sup>	17 <sup>-4</sup>	22 <sup>-1</sup>

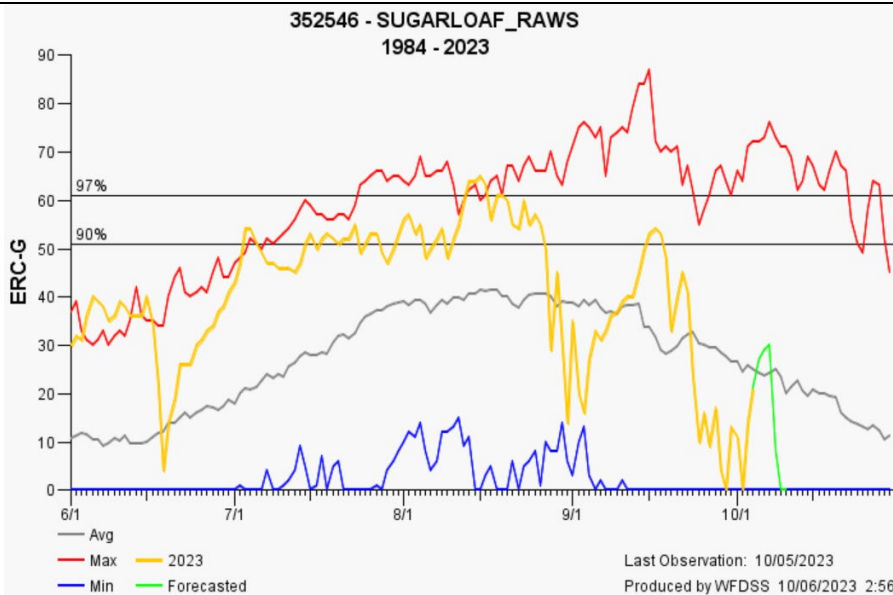
**OUTPUTS:**      Expected Fine Dead Fuel Moisture: 6%      POI: 40%

Fire Behavior: Minimal Atmosphere: Unstable Max. spot distance: ¼ mile LAL: 1	<b>Fuel/Type Model</b>	<b>Maximum ROS</b>	<b>Maximum Flame Length</b>
	Timber Litter/TL5	3 ch/hr	2 ft.
	Timber Understory/TU5	5 ch/hr	5 ft.

Expected Fire Behavior is Based on the Warmest, Driest, Windiest Conditions Forecasted.

**Today:** Another full day of drying. Based on the lack of smoke production, heavy fuels appear to have ceased burning. Given the warm dry weather, a torching tree cannot be ruled out.

**Potential:** The ERC level will trend upward through the end of the weekend. Light fuels and lichens in exposed areas will be first to become vulnerable to consumption.



#### Air Operations

Inversion should clear by 1000.

#### Safety:

Our fires may not have exhibited much fire activity for several days but that doesn't allow us to ignore the fire weather conditions. Remember to stay informed on weather conditions and adjust actions as necessary to meet our objectives.

DIVISION ASSIGNMENT LIST			1. Branch		2. Division	
					<b>D</b> <b>Dinner/Grizzly/Brice Creek</b> <b>Page 1</b>	
3. Incident Name <b>Umpqua Fires</b>			4. Operational Period Date: <b>10/07/2023</b> Time: <b>0700-2100</b>			
5. Operations Personnel						
Operations Chief		<b>Shawn Jaca</b> <b>Whitney Machado - t</b>		Division Supervisor		<b>Jon Campbell</b> <b>Billy Turner - t</b>
Safety Officer		<b>Ray Hershey</b>		Air Attack		
6. Resources Assigned this Period						
Strike Team/Task Force/Resource Designator		Leader	# Persons	LWD	Drop Off PT./Time	Pick Up PT./Time
1	<b>O-408 TFLD</b>	<b>Eric Bader</b>	<b>1</b>	<b>10/12</b>	<b>Cottage Grove/0700</b>	<b>Cottage Grove/2100</b>
2	<b>O-371 TFLD</b>	<b>Matthew Roby</b>	<b>1</b>	<b>10/12</b>	<b>Cottage Grove/0700</b>	<b>Cottage Grove/2100</b>
3	<b>O-355 HEQB</b>	<b>Matthew Jones</b>	<b>1</b>	<b>10/11</b>	<b>Cottage Grove/0700</b>	<b>Cottage Grove/2100</b>
4	<b>O-362 TFLD</b>	<b>Robert Clark Jr</b>	<b>1</b>	<b>10/14</b>	<b>Cottage Grove/0700</b>	<b>Cottage Grove/2100</b>
5	<b>O-382 HEQB - t</b>	<b>Garret Watson</b>	<b>1</b>	<b>10/12</b>	<b>Cottage Grove/0700</b>	<b>Cottage Grove/2100</b>
6	<b>O-372 WFM2 Metolius</b>	<b>Stephen Hanson</b>	<b>11</b>	<b>10/12</b>	<b>Cottage Grove/0700</b>	<b>Cottage Grove/2100</b>
7	<b>O-365 FELB - t</b>	<b>Daniel Horwath</b>	<b>1</b>	<b>10/12</b>	<b>Cottage Grove/0700</b>	<b>Cottage Grove/2100</b>
8	<b>O-18 FMOD Toms Timber</b>	<b>Tom Conway</b>	<b>2</b>	<b>10/10</b>	<b>Cottage Grove/0700</b>	<b>Cottage Grove/2100</b>
9	<b>O-20 FMOD A and C Cutting</b>	<b>Skyler Gardner</b>	<b>2</b>	<b>10/20</b>	<b>Cottage Grove/0700</b>	<b>Cottage Grove/2100</b>
10	<b>O-22 FOMD B&amp;M Wildfire</b>	<b>Nick Browning</b>	<b>2</b>	<b>10/20</b>	<b>Cottage Grove/0700</b>	<b>Cottage Grove/2100</b>
11						
12	<b>E-28 FEL1 Inland Timber Co</b>	<b>Mikeal Stephenson</b>	<b>2</b>	<b>10/19</b>	<b>Cottage Grove/0700</b>	<b>Cottage Grove/2100</b>
13	<b>E-30 SKD1 Mark Jones Trucking</b>	<b>Zakkary Dewbre</b>	<b>2</b>	<b>10/19</b>	<b>Cottage Grove/0700</b>	<b>Cottage Grove/2100</b>
14	<b>E-230 LOGL Pacific Ridgeline</b>	<b>Brett Miller</b>	<b>2</b>	<b>10/12</b>	<b>Cottage Grove/0700</b>	<b>Cottage Grove/2100</b>
15	<b>E-29 LOGP Dean Innovations</b>	<b>Steven Lazott</b>	<b>2</b>	<b>10/19</b>	<b>Cottage Grove/0700</b>	<b>Cottage Grove/2100</b>
16	<b>E-214 EXC4 Bob Murray Logging</b>	<b>Aaron Gregory</b>	<b>2</b>	<b>10/19</b>	<b>Cottage Grove/0700</b>	<b>Cottage Grove/2100</b>
17	<b>E-215 EXC4 Sutphin Trucking</b>	<b>Brett Mason</b>	<b>2</b>	<b>10/19</b>	<b>Cottage Grove/0700</b>	<b>Cottage Grove/2100</b>
18	<b>E-234 CHSL Pacific Ridgeline</b>	<b>Zach Jafarzadeh</b>	<b>2</b>	<b>10/18</b>	<b>Cottage Grove/0700</b>	<b>Cottage Grove/2100</b>
19						
20		<b>Meal Count</b>	<b>Not At ICP</b>			
7. Control Operations:						
<p><b>Task:</b> Monitor fire activity on Grizzly fire and take suppression actions by utilizing ground and aircraft as necessary. Continue hand felling hazard trees on Division D Brice Creek. Continue chipping and dozer line repair on the Grizzly fire. Utilize Field Maps to document suppression repair that is ready for READ approval.</p> <p><b>Purpose:</b> Prevent fire from impacting values at risk, including communities to the west, commercial timberlands and T&amp;E habitat. Provide for firefighter and public safety. Reduce the risk to responders and public from hazard trees.</p> <p><b>End state:</b> Achieve full containment on the Dinner and Brice Creek fires. Monitor the Grizzly fire and take suppression action to ensure that it stays within its current footprint. Ensure suppression repair meets turnback standards and backhaul non-essential supplies. Meet Umpqua National Forest Hazard Tree Abatement Plan.</p>						
8. Special Instructions:						
Active Helispots Identified on Division Map: Dinner H 41 Grizzly H 191 Brice Creek H 161						
9. Division/Group Communication Summary						
<b>See Communications Plan</b>						
Prepared by (Resource Unit Ldr)		Approved by (Planning Sect. Ch.)		Date	Time	
<i>Meredith Butcher/Jennifer Norton - t</i>		<i>Aileen Nichols</i>		<b>10/06/2023</b>	<b>2000</b>	

<b>DIVISION ASSIGNMENT LIST</b>				1. Branch		2. Division <b>D</b> <b>Dinner/Grizzly/Brice Creek</b> <b>Page 2</b>	
3. Incident Name <b>Umpqua Fires</b>				4. Operational Period Date: <b>10/07/2023</b> Time: <b>0700-2100</b>			
5. Operations Personnel							
Operations Chief		<b>Shawn Jaca</b> <b>Whitney Machado - t</b>		Division Supervisor		<b>Jon Campbell</b> <b>Billy Turner - t</b>	
Safety Officer		<b>Ray Hershey</b>		Air Attack			
6. Resources Assigned this Period							
Strike Team/Task Force/Resource Designator		Leader	# Persons	LWD	Drop Off PT./Time		Pick Up PT./Time
<b>1</b>	<b>O-129 READ</b>	<b>Jed Hancock</b>	<b>1</b>	<b>10/11</b>	<b>Strader ICP/0700</b>		<b>Strader ICP/2100</b>
<b>2</b>	<b>O-238 REAF</b>	<b>Chris McGrath</b>	<b>1</b>	<b>10/11</b>	<b>Strader ICP/0700</b>		<b>Strader ICP/2100</b>
<b>3</b>	<b>O-381 TSHP</b>	<b>Dan Smith</b>	<b>1</b>	<b>10/19</b>	<b>Strader ICP/0700</b>		<b>Strader ICP/2100</b>
<b>4</b>							
<b>5</b>	<b>O-328.68 SOF2</b>	<b>Larry Wright</b>	<b>1</b>	<b>10/08</b>	<b>Strader ICP/0700</b>		<b>Strader ICP/2100</b>
<b>6</b>	<b>O-15 REMS 3</b>	<b>Nolan Howell</b>	<b>4</b>	<b>10/07</b>	<b>Strader ICP/0700</b>		<b>Strader ICP/2100</b>
<b>7</b>	<b>E-142 Med MOD1 Cardinal Medical Solutions</b>	<b>Marcas Garcia</b>	<b>2</b>	<b>10/17</b>	<b>Cottage Grove/0700</b>		<b>Cottage Grove/2100</b>
<b>8</b>							
<b>9</b>							
<b>10</b>							
<b>11</b>							
<b>12</b>							
<b>13</b>							
<b>14</b>							
<b>15</b>							
<b>16</b>							
<b>17</b>							
<b>18</b>							
<b>19</b>							
<b>20</b>		<b>Meal Count</b>	<b>5</b>				
7. Control Operations: <b>Task:</b> Monitor fire activity on Grizzly fire and take suppression actions by utilizing ground and aircraft as necessary. Continue hand felling hazard trees on Division D Brice Creek. Continue chipping and dozer line repair on the Grizzly fire. Utilize Field Maps to document suppression repair that is ready for READ approval. <b>Purpose:</b> Prevent fire from impacting values at risk, including communities to the west, commercial timberlands and T&E habitat. Provide for firefighter and public safety. Reduce the risk to responders and public from hazard trees. <b>End state:</b> Achieve full containment on the Dinner and Brice Creek fires. Monitor the Grizzly fire and take suppression action to ensure that it stays within its current footprint. Ensure suppression repair meets turnback standards and backhaul non-essential supplies. Meet Umpqua National Forest Hazard Tree Abatement Plan.							
8. Special Instructions: Active Helispots Identified on Division Map: Dinner H 41 Grizzly H 191 Brice Creek H 161							
9. Division/Group Communication Summary <b>See Communications Plan</b>							
Prepared by (Resource Unit Ldr) <i>Meredith Butcher/Jennifer Norton - t</i>			Approved by (Planning Sect. Ch.) <i>Aileen Nichols</i>			Date <b>10/06/2023</b>	Time <b>2000</b>



DIVISION ASSIGNMENT LIST			1. Branch		2. Division	
3. Incident Name <b>Umpqua Fires</b>			4. Operational Period Date: <b>10/07/2023</b> Time: <b>0700-2100</b>			
5. Operations Personnel						
Operations Chief		<b>Shawn Jaca Whitney Machado - t</b>		Division Supervisor		<b>Robert Boles Kenny Peasley - t</b>
Safety Officer		<b>Ray Hershey</b>		Air Attack		
6. Resources Assigned this Period						
Strike Team/Task Force/Resource Designator	Leader	# Persons	LWD	Drop Off PT./Time	Pick Up PT./Time	
1 O-363 TFLD	Mitchell Stiles	1	10/12	Strader ICP/0700	Strader ICP/2100	
2						
3 O-353 HEQB	Anthony Weidner	1	10/12	Strader ICP/0700	Strader ICP/2100	
4 O-354 HEQB	Steven Lozano	1	10/13	Strader ICP/0700	Strader ICP/2100	
5 O-356 HEQB - t	Colin Thompson	1	10/12	Strader ICP/0700	Strader ICP/2100	
6 O-357 HEQB - t	Kyle Murphy	1	10/12	Strader ICP/0700	Strader ICP/2100	
7 O-358 HEQB - t	Sterling Smith	1	10/12	Strader ICP/0700	Strader ICP/2100	
8 C-57 CR2I Mt Baker IA	Erik Usher	24	10/12	Strader ICP/0700	Strader ICP/2100	
9 C-58 CRW2 UMF Vet Crew	Andrew Goshgarian	18	10/10	Strader ICP/0700	Strader ICP/2100	
10 O-406 FMOD Timber Tippers #1	Gabe Raddekopp	2	10/19	Strader ICP/0700	Strader ICP/2100	
11 O-407 FMOD Timber Tippers #4	Jerald Floyd	2	10/19	Strader ICP/0700	Strader ICP/2100	
12						
13 E-239 SKD1 Mark Jones	Beau Morrell	2	10/19	Strader ICP/0700	Strader ICP/2100	
14 E-242 FORW Stafford Reload	Noah Wible	2	10/19	Strader ICP/0700	Strader ICP/2100	
15 E-114 EXC2 Scott Marshall	Cindy Marshall	2	10/19	Strader ICP/0700	Strader ICP/2100	
16 E-231 EXC2 Mark Jones	Mark Jones	2	10/15	Strader ICP/0700	Strader ICP/2100	
17 E-211 CHSL Pacific Ridgeline	Joseph Schlabach	2	10/12	Strader ICP/0700	Strader ICP/2100	
18 E-233 CHSL Lane Forest	George Turney	2	10/19	Strader ICP/0700	Strader ICP/2100	
19						
20						
21						
22						
24		<b>Meal Count</b>	<b>62</b>			
7. Control Operations:						
<b>Task:</b> Continue suppression repair and hauling on the Chilcoot fire. Utilize Field Maps to document suppression repair that is ready for READ approval.						
<b>Purpose:</b> Prevent fire from impacting values at risk, including communities, commercial and T&E habitat. Provide for firefighter and public safety.						
<b>End state:</b> Achieve full containment on the Chilcoot and Ridge fires. Suppression repair meets turnback standards and non-essential supplies have been back hauled.						
8. Special Instructions:						
Active Helispots identified on Division Maps: Chilcoot H 57, H 51, H 1, H 43 Ridge H 291						
9. Division/Group Communication Summary						
<b>See Communications Plan</b>						
Prepared by (Resource Unit Ldr)		Approved by (Planning Sect. Ch.)		Date	Time	
<i>Meredith Butcher/Jennifer Norton - t</i>		<i>Aileen Nichols</i>		<b>10/06/2023</b>	<b>2000</b>	

<b>DIVISION ASSIGNMENT LIST</b>			1. Branch		2. Division <b>H</b> <b>Chilcoot/Ridge</b> <b>Page 2</b>	
3. Incident Name <b>Umpqua Fires</b>			4. Operational Period Date: <b>10/07/2023</b> Time: <b>0700-2100</b>			
5. Operations Personnel						
Operations Chief		<b>Shawn Jaca</b> <b>Whitney Machado - t</b>		Division Supervisor		<b>Robert Boles</b> <b>Kenny Peasley - t</b>
Safety Officer		<b>Ray Hershey</b>		Air Attack		
6. Resources Assigned this Period						
	Strike Team/Task Force/Resource Designator	Leader	# Persons	LWD	Drop Off PT./Time	Pick Up PT./Time
1	<b>E-227 Dump 10 Yard JLC</b>	<b>Danny Amon</b>	<b>1</b>	<b>10/12</b>	<b>Strader ICP/0700</b>	<b>Strader ICP/2100</b>
2	<b>E-228 Dump 10 Yard JLC</b>	<b>Mark Angell</b>	<b>1</b>	<b>10/12</b>	<b>Strader ICP/0700</b>	<b>Strader ICP/2100</b>
3	<b>E-235 Dump 10 Yard Pac Ridgeline</b>	<b>Trent Jones</b>	<b>1</b>	<b>10/16</b>	<b>Strader ICP/0700</b>	<b>Strader ICP/2100</b>
4	<b>E-236 Dump 10 Yard Lee Roy Belloir</b>	<b>Ross Belloir</b>	<b>1</b>	<b>10/16</b>	<b>Strader ICP/0700</b>	<b>Strader ICP/2100</b>
5	<b>E-229 T2 Backhoe JLC</b>	<b>Coby Patterson</b>	<b>1</b>	<b>10/12</b>	<b>Strader ICP/0700</b>	<b>Strader ICP/2100</b>
6						
7	<b>O-129 READ</b>	<b>Jed Hancock</b>	<b>1</b>	<b>10/11</b>	<b>Strader ICP/0700</b>	<b>Strader ICP/2100</b>
8	<b>O-352 READ - t</b>	<b>Luis Palacios</b>	<b>1</b>	<b>10/11</b>	<b>Strader ICP/0700</b>	<b>Strader ICP/2100</b>
9	<b>O-238 REAF</b>	<b>Chirs McGrath</b>	<b>1</b>	<b>10/14</b>	<b>Strader ICP/0700</b>	<b>Strader ICP/2100</b>
10	<b>O-348 REAF</b>	<b>Brian Rhoten</b>	<b>1</b>	<b>10/07</b>	<b>Strader ICP/0700</b>	<b>Strader ICP/2100</b>
11	<b>O-386 REAF</b>	<b>Cynthia Armentrout</b>	<b>1</b>	<b>10/14</b>	<b>Strader ICP/0700</b>	<b>Strader ICP/2100</b>
12	<b>O-385 REAF - t</b>	<b>Natalie Mills</b>	<b>1</b>	<b>10/16</b>	<b>Strader ICP/0700</b>	<b>Strader ICP/2100</b>
13	<b>O-381 TSHP</b>	<b>Dan Smith</b>	<b>1</b>	<b>10/19</b>	<b>Strader ICP/0700</b>	<b>Strader ICP/2100</b>
14						
15	<b>O-333 SOFR</b>	<b>Larry Welsh</b>	<b>1</b>	<b>10/08</b>	<b>Strader ICP/0700</b>	<b>Strader ICP/2100</b>
16	<b>O-360 REMS 4</b>	<b>Brendon Church</b>	<b>4</b>	<b>10/19</b>	<b>Strader ICP/0700</b>	<b>Strader ICP/2100</b>
17	<b>E-193 AMBO 55 Front Line</b>	<b>Ben Puig</b>	<b>2</b>	<b>10/12</b>	<b>Strader ICP/0700</b>	<b>Strader ICP/2100</b>
18						
19						
20						
21						
22						
24		<b>Meal Count</b>	<b>19</b>			
7. Control Operations: <b>Task:</b> Continue suppression repair on the Chilcoot fire. Utilize Field Maps to document suppression repair that is ready for READ approval. <b>Purpose:</b> Prevent fire from impacting values at risk, including communities, commercial and T&E habitat. Provide for firefighter and public safety. <b>End state:</b> Achieve full containment on the Chilcoot and Ridge fires. Suppression repair meets turnback standards and non-essential supplies have been back hauled.						
8. Special Instructions: Active Helispots identified on Division Maps: Chilcoot H 57, H 51, H 1, H 43 Ridge H 291						
9. Division/Group Communication Summary						
<b>See Communications Plan</b>						
Prepared by (Resource Unit Ldr) <i>Meredith Butcher/Jennifer Norton - t</i>		Approved by (Planning Sect. Ch.) <i>Aileen Nichols</i>		Date <b>10/06/2023</b>	Time <b>2000</b>	

<b>AIR OPERATIONS SUMMARY 220</b>		Prepared/Approved: Nancy Barker		Prepared: 10/06/2023		Prepared Time: 1800 hrs.	
<b>1. INCIDENT NAME: UMPQUA FIRES</b>		<b>2. OPERATIONAL PERIOD</b> 10/07/2023		<b>START TIME:</b> 0700		<b>SUNRISE:</b> 0717	
				<b>END TIME:</b> 1900		<b>SUNSET:</b> 1843	

**3. REMARKS** (Safety Notes, Hazards, Air Operations Special Equipment, etc.):  
**Steep terrain \* Shadow effects**

All GPS data to be collected in DEGREES, DECIMAL MINUTES.

Aircraft costs daily to: [2023.chilcoot.finance@firenet.gov](mailto:2023.chilcoot.finance@firenet.gov) and cc to [2023.chilcoot.airops@firenet.gov](mailto:2023.chilcoot.airops@firenet.gov)

<b>4. READY ALERT AIRCRAFT:</b> N38HX Teton Short Haul in Grants Pass N35HX Wenatchee Short Haul in Sun River Order through Roseburg Aircraft Desk 541-957-3325		<b>5. TFRs:</b>	
<b>8. FIXED-WING Avail/ Type/ Make-Model/ N#/ Base</b> AIRTANKERS: ORDER THRU ATGS ATGS – order through Roseburg Dispatch Landing Sites on Fire: See pilot map for locations. Know the helispots near your work area. Glide Helibase 43°18.922'N X 123°04.415'W 700' TANK DIPS: See pilot map LAKE DIPS: Gertrude Lake 43°35.698'N X 122°32.452'W 3990' Crawfish Lake 43°37.502'N X 122°42.222'W 4794' Crystal Lake 43°35.602'N X 122°38.655'W 4650' Elephant Lake 43°35.742'N X 122°39.237'W 5126' Helibase Comm Trailer – Incident Response (E-19)			
<b>7. FREQUENCIES</b>		<b>FM</b>	
A/A Forest Primary	118.5750		
A/G 49 Forest Primary		168.0375	
A/G 81 Forest Secondary		166.9500	
Tac Div D Tone103.5 (TX/RX)		168.3875	
Tac Div H Tone103.5 (TX/RX)		167.3750	
Deck Tone 156.7 (TX/RX)		163.1000	
VMED29 Tone 156.7 (TX/RX)		155.3475	
CTAF		122.8	
Air Guard Tone 110.9 (TX)		168.6250	

FAA N#	T Y	MAKE/ MODEL	BASE	START	AVAIL	REMARKS	Helispots	
							Div D	Div H
357KA (A-57)	1	KMAX	Glide	0800	0900	1 personnel (LWD)	H-41 Dinner 43°42.493'N x 122°44.287'W	H-57 Chilcoot 43°26.132'N x 122°42.886'W
933CH (A-39)	2	Bell 205 A1	Glide	0800	0900	7 personnel	H-161 Brice Creek 43°37.352'N x 122°31.593'W	H-51 Chilcoot 43°23.330'N x 122°42.411'W
							H-191 Grizzly 43°35.017'N x 122°37.313'W	H-1 Chilcoot 43°24.915'N x 122°44.923'W
								H-43 Chilcoot 43°21.324'N x 122°43.723'W
								H-291 Ridge 43°23.840'N x 122°31.291'W

# INCIDENT RADIO COMMUNICATIONS PLAN (ICS 205)

1. Incident Name:		2. Date Prepared:		3. Operational Period:							
<b>CHILCOOT (CHILCOOT-GRIZZLY-RIDGE-BRICE-DINNER)</b>		Date: 10/06/23		Date/Time from: 10/07/23 - 0700							
				Date/Time To: 10/07/23 - 2100							
4. Radio Channel Use:											
Zone/ Group	Ch#	Function	Channel Name	Assignment	RX Freq	RX Tone/NAC	TX Freq	TX Tone/NA C	Mode (A/D)	Remarks	
	1	TACTICAL	NORT DIR	NONE	170.5500	103.5	170.5500	103.5	A	UNASSIGNED	
	2	COMMAND	REDBUTTE	ALL DIV	170.5500	103.5	164.8000	179.9	A	LOCATED ON RED BUTTE (S)	
	3	COMMAND	CHILCOOT	ALL DIV	170.5500	103.5	164.8000	192.8	A	LOCATED ON CHILCOOT RDG (S)	
	4	COMMAND	FAIRVIEW	ALL DIV	170.5500	103.5	164.8000	173.8	A	LOCATED ON FAIRVIEW MTN (N)	
	5	COMMAND	DOEHD	ALL DIV	170.5500	103.5	164.8000	186.2	A	LOCATED ON DOEHEAD MTN (S)	
	6	TACTICAL	UPF PRJ	NONE	163.7125	103.5	163.7125	103.5	A	UNASSIGNED	
	7	COMMAND	ROD LANE	NONE	170.0250	000.0	166.3000	107.2	A	UNASSIGNED	
	8	TACTICAL	UPF REC	DIV D	168.3875	103.5	168.3875	103.5	A	DELTA DIVISION TAC	
	9	COMMAND	INTEROP	NONE	152.6600	151.4	157.8600	110.9	A	UNASSIGNED	
	10	TACTICAL	CINNAMON	NONE	171.4250	103.5	166.0000	192.8	A	UNASSIGNED	
	11	TACTICAL	NURD PRJ	NONE	169.1250	103.5	169.1250	103.5	A	LOCAL TAC FOR N UMP R.D.	
	12	TACTICAL	DLRD PRJ	NONE	168.2625	103.5	168.2625	103.5	A	UNASSIGNED	
	13	TACTICAL	CG/IT PRJ	DIV H	167.3750	103.5	167.3750	103.5	A	HOTEL DIVISION TAC	
	14	AIR - GROUND	VMED29	ALL	155.3475	156.7	155.3475	156.7	A	MEDICAL EVAC	
	15	AIR - GROUND	A/G-49 PRI	ALL	168.0375	000.0	168.0375	000.0	A	AIR TO GROUND OPS, PRIMARY	
	16	AIR - GROUND	A/G-81 SEC	ALL	166.9500	000.0	166.9500	000.0	A	AIR TO GROUND OPS, SECONDARY	
5. Special Instructions						CURRENT CLONE: UPF23A NORT					
6. Prepared By						Name: Bruce Hanna					
(Communications Unit Leader)						Signed: /s/ Bruce Hanna					
<b>Communications staffed 0600-2200</b>						<b>CHILCOOT COMMUNICATIONS: (949) 648-1591</b>					
						Date/Time: 10/06/23 16:00					

### Work and Fatigue in Wildland Firefighting effects your physical and emotional state!

Wildland Firefighting is arduous work, performed for long shifts in difficult environmental conditions. The work can be dangerous due to the fire and working conditions. Heat, smoke, rolling rocks, falling snags, and other hazards threaten the worker. Fatigue can impair performance and decision making, increasing the risk of injury. Prolonged exposure to fatigue, stress, smoke, and poor nutrition has the potential to increase the incidence of upper respiratory illness, but also mental lapses.

The stress response is necessary to prepare an athlete, firefighter or soldier for a maximal effort in a physical challenge, but it can be unhealthy if it occurs too often in the wrong setting.

#### Definitions:

**Fatigue**—A sense of tiredness, either mental or physical, brought on by stress (lack of sleep, physical work, nutritional inadequacies, or mental stresses). Fatigue following work or sleep deprivation is a normal state and can be reversed with adequate recovery or rest.

**Accumulated (Chronic) Fatigue**—Fatigue from which normal rest does not produce recovery. Accumulated fatigue is often caused by extended periods of stress with inadequate recovery periods, resulting in decreased productivity, compromised immune function, and reduced alertness.

Fatigued workers perform poorly and behave carelessly, tolerate greater errors, and become inattentive. They display decreased motivation, increased irritability and depression, and low morale. Accumulated fatigue is more persistent, producing a wider array of effects on performance, health, and morale than ordinary fatigue. Accumulated fatigue requires longer recovery periods than ordinary fatigue.

Correct Nutrition, Hydration and Rest are good coping mechanisms for stress and fatigue. Make use of your down time and rest per the work/rest guidelines.

**Your Mental Health Matters!**  
Margaret Dietrich  
Human Resource Specialist/Training Specialist  
Cell 360-701-3154 or Team13trsp@outlook.com



## CHECK-IN Process All Resources

### STEP 1. Scan the QR code to fill out and submit the online check-in form.

- Have your resource order ready, as many questions reference it.

### STEP 2. Email your MANIFEST (if appropriate).

Include your request number in the subject line (e.g, E-118, 0-48).

- If you are assigned to the Grizzly, Dinner or Brice Creek incidents, email to [2023.dinner.checkin@firenet.gov](mailto:2023.dinner.checkin@firenet.gov)
- If you are assigned to the Chilcoot or Ridge incidents, email to [2023.chilcoot.checkin@firenet.gov](mailto:2023.chilcoot.checkin@firenet.gov)

### STEP 3. See Finance page in IAP for further instructions on how to check in with finance.

### STEP 4. Complete vehicle inspection as instructed on your resource order, including contract inspection as needed.

If you have any issues, please contact Check-in at 971-727-5061 or by email at [2023.chilcoot.checkin@firenet.gov](mailto:2023.chilcoot.checkin@firenet.gov) or [2023.dinner.checkin@firenet.gov](mailto:2023.dinner.checkin@firenet.gov)

# Dinner-Grizzly-Brice Creek- Chilcoot-Ridge Demob Check-Out Form

RO # \_\_\_\_\_ Resource Name \_\_\_\_\_ Fire: \_\_\_\_\_ Date: \_\_\_\_\_

## Initials

### Follow these steps in the order below:

- \_\_\_\_\_ 1. **Weed Wash** – ALL line resources that went off-road will need to go through a Weed Wash. **If not needed, proceed to step 2.**
- \_\_\_\_\_ 2. **Ground support** – Contractors must stop to sign their release inspection. The inspection is optional for agency resources. **Agency resources proceed to step 3.**
- \_\_\_\_\_ 3. **Supply** – Return any items you checked out. All units must have initials from SUPPLY confirming all equipment has been returned.
- \_\_\_\_\_ 4. **Communications** – Return any items you checked out. All units must have initials from COMMUNICATIONS confirming all radio equipment has been returned.
- \_\_\_\_\_ 5. **Finance** – Proceed to FINANCE to receive your final timesheet. Having ALL your time turned in will GREATLY speed up the process.
- \_\_\_\_\_ 6. **Demob – Final step.** Return this completed Demob Check-Out form and any Documentation to Demob/Check-in. Documentation can also be emailed to [2023.chilcoot.docs@firenet.gov](mailto:2023.chilcoot.docs@firenet.gov). Let Demob know your estimated time of departure, arrival time and destination.

When all above information had been submitted to Demob they will notify Expanded Dispatch to release you from the incident.

### ALL AIR TRAVELERS

**Submit your air request 72 hours prior to flight date through the QR code on the IAP Cover. Call 971-727-5061 for any questions or assistance.**

### DMOB LIST FOR 10/7/2023

DINNER-BRICE CREEK-GRIZZLY FIRES			
10/07/2023	E-7	TIMBER BASIN CONTRACTORS	STK1
10/07/2023	E-27	ASI ARDEN	CHP2
10/07/2023	E-107	CARBON WORKS	EXC4
10/07/2023	E-108	MARK JONES	EXC4
CHILCOOT-RIDGE FIRES			
10/07/2023	C-59	NW-NES-NORTH COLUMBIA DNR	CR2I
10/07/2023	C-60	OWF-CHELAN	CR2I
10/08/2023	O-333	WELSH, LARRY	SOFR

### DMOB LIST FOR 10/8/2023

DINNER-BRICE CREEK-GRIZZLY FIRES			
10/08/2023	O-15	REMOTE ACCESS	MESU
10/08/2023	O-143	GRAYSHIELD, ROBIN	RCDM
CHILCOOT-RIDGE FIRES			
10/08/2023	E-115	ED STAUB & SONS PETROLEUM	FUT1
10/08/2023	E-214	BOB MURRAY LOGGING	EXC4
10/08/2023	E-215	SUTPHIN TRUCKING	EXC4
10/08/2023	E-219	XTREME WILDLAND	HND1
10/08/2023	O-334	WILLIAMS, DONNA	RCDM
10/08/2023	O-377	SANFORD, ANDREW	SEC1

### DMOB LIST FOR 10/9/2023

DINNER-BRICE CREEK-GRIZZLY FIRES			
10/09/2023	No resources demobing		
CHILCOOT-RIDGE FIRES			
10/09/2023	E-27	JB CONTRACTORS	PUP2
10/09/2023	E-29	CALVIN D WHETZEL	STK2
10/09/2023	E-31	ROGUE RIVER FIRE, WATER & BUILDING	POT2
10/09/2023	O-324	PAULSEN, JACK	SECM
10/09/2023	O-328.	IMT2-NW-TEAM13-GALES	ICT2
10/09/2023	S-439	WILDLAND SECURITY	SSEC

# Extensions and Crew Swaps – NW 13

This is the Team Standard Operating procedure based on national policy

- **Resources may be demobed, regardless of crew status, if it is no longer needed.**
- Contract Crews are generally not extended unless replacement resources are scarce. Crews may swap crew members if needed by utilizing the crew swap form at the QR code below.
- Resources ordered on 'O' numbers cannot swap crew members (exception - some medical resources). These resources can extend depending on availability and needs of the incident. See Plans for a resource extension form.

## **Contracted Fireline Equipment Crew Swap Procedure**

- Contract equipment may stay on the incident until it is no longer needed, a maximum dollar amount is reached, or replacement crew members cannot be provided.
- It is the responsibility of the contract owner to track their crew members and ensure they maintain proper work/rest ratios. The IMT assumes contracted equipment will swap crew members as needed to provide adequate rest for their employees.
- Non-fireline equipment personnel (like hand wash stations) are not tracked other than a current onsite contact.
- If replacement crew members cannot be provided, this must be documented on an ICS-213 and provided to Operations and Plans at least 72 hours prior to the 14th workday. The resource will be demobed after 14 shifts OR an extension form may be completed based on operational need, see Plans for this form.
- Crew swaps MUST be tracked through the below QR code form as soon as known, no later than 1800 on the day prior to the swap. If the new crew member is the primary operator and any information in the IAP is incorrect, correct information MUST be provided to the Division Supervisor immediately following the operational briefing/division breakout.
- We prefer all members of a resource swap at once if possible. The crew swap form will need to be filled out for each individual crew member.
- Replacement workers must provide proof of current annual training upon request.

QR code link to Umpqua Fires FTP page, then find button named **Crew Swap Form**



Please contact Plans after the briefing, at their office, or at Check-in if you have questions or wish to understand how your last workday/demob date was determined.





## Resource Advisor Message

**Objectives** – One objective of the fire suppression is to repair areas disturbed by fire suppression activities into a condition that does not negatively affect natural and cultural resources and will not create excessive erosion on the landscape. Without compromising public and firefighter safety:

- Reduce the potential for soil erosion and sedimentation.
- Repair roads and drainage structures to a functioning condition.
- Avoid driving any kind of machinery on severely burned soils.
- Reduce the visual impacts of fire line as well other suppression activities when feasible.
- Avoid dragging large trees across soils, especially severely burned soils.
- Avoid driving machinery on moist soils.
- Avoid bucking up large, downed wood. Leave logs in as long of piece as possible.
- **Leave no trace.** Pack out trash if cans are overflowing, avoid leaving trash next to overflowing trash cans.

### General Road Rules

Roads can be damaged easily during rainfall events. Signs of road distress include the following:

- Surface deformities such as: potholes, soft spots, ruts, etc. greater than 2” deep
- Pooling water, indicating drainage not functioning as designed.
- Slurry or conditions that causes loss of traction.
- Utilize 4-wheel drive on gravel roads in order to reduce impacts to the road surface.

Roads with signs of distress should not be driven on. Work with REAFs to implement erosion control measures.

### General Water Bar Specifications:

- Facing the slope, standing at the bottom of a repair feature or existing water bar, the next water bar constructed should be placed at eye level.
- Water bars should be constructed into compacted soil and not constructed by simply pushing up loose soil and duff.
- Water bars should direct runoff away from the burned area where possible (into the green).
- Water bars should have out-sloped trenching at 30-45 ° from perpendicular to the fire line.
- Assure that the downslope end of the water bar is open and has adequate length to allow free flow of water off the line.
- Logs can be incorporated into water bars if they are embedded or anchored in a trench.
- Slash can be placed below outlet of water bar to help slow runoff and help collect sediment.



Do you or the public need to reach the PIOs?

Phone: (541) 900-5862

Emails:

Brice Creek/Dinner/Grizzly: [2023.dinner@firenet.gov](mailto:2023.dinner@firenet.gov)

Chilcoot/Ridge: [2023.chilcoot@firenet.gov](mailto:2023.chilcoot@firenet.gov)

Please email us your photos! (And don't forget your  
PPE 😊)



Chilcoot Fire Information



Dinner, Brice Creek and Grizzly Fires Information

## Mail

Address your mail to:

C/O (Chilcoot Fire, Your Name, Crew/RO Number, Phone Number)

North Umpqua Ranger District

18782 North Umpqua Highway

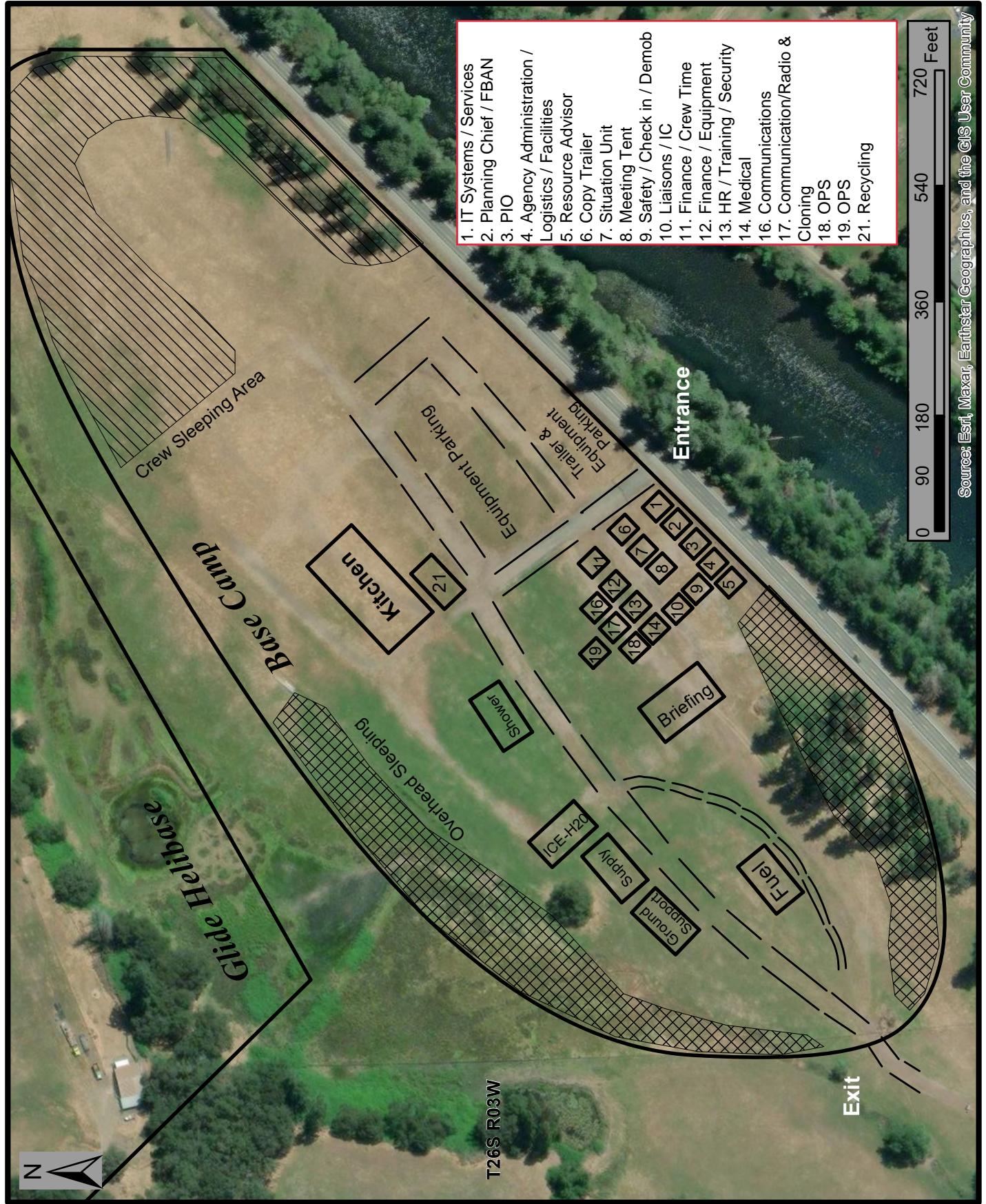
Glide, OR 97443

**Pick-up:** You will need to pick up your mail at the Umpqua Ranger District



**Call or visit our trailer at ICP if you've lost  
or found something!**

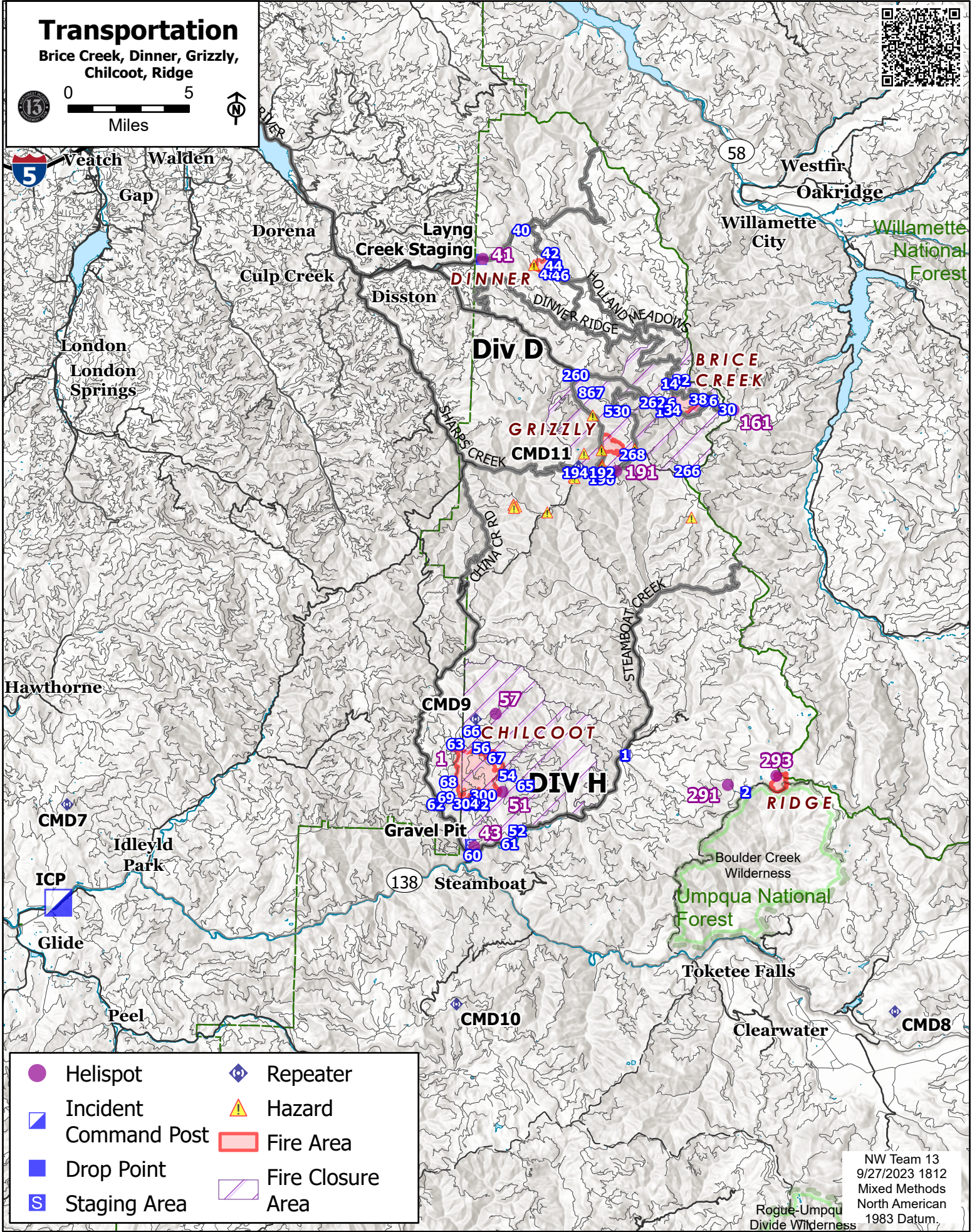
# Chilcoot ICP Basecamp Map



Source: Esri, Maxar, Earthstar Geographics, and the GIS User Community

# Transportation

Brice Creek, Dinner, Grizzly, Chilcoot, Ridge



- |                       |                   |
|-----------------------|-------------------|
| Helispot              | Repeater          |
| Incident Command Post | Hazard            |
| Drop Point            | Fire Area         |
| Staging Area          | Fire Closure Area |

NW Team 13  
 9/27/2023 1812  
 Mixed Methods  
 North American  
 1983 Datum.

**RETURN TO PLANNING OPS BY 1300 HRS**  
**Via radio (preferred method), text, email, photo, or cell phone**  
**Project for Next Operational Period and 48 & 72 hours in the Future**

<b>DIVISION PLANNING SHEET</b>		Division/ Group	Name Of Division /Group Supervisor		
Next Operational Period Date:					
Operations and Resource unit text number and e-mail					
<input type="checkbox"/> - Roll over assigned Resources <input type="checkbox"/> -Excess resources <input type="checkbox"/> -Correction to 204					
E or C number	Strike Team/Task Force/ Resource Designator	Leader	Number Persons	Comments	
<input type="checkbox"/> -Request for additional Resources					
Number	Type	Resource Kind	Number	Type	Resource Kind
Operational Projection/Resource Needs/Excess Resources (48 hours):					
Operational Projection/Resource Needs/Excess Resources (72 hours):					
Comments					



# MEDICAL PLAN (206 WF)

1. Incident/Project Name				2. Operational Period					
<b>Dinner/Grizzly/Brice Creek/Chilcoot/Ridge</b>				Date/Time: <b>10/07 0700 – 10/07 2100</b>					
<b>3. Ambulance Services</b>									
Name	Complete Address	Phone	Advanced Life Support (ALS)						
			Yes	No					
Umpqua Valley Ambulance	Roseburg, OR	911	X						
Glide Rural Fire Protection	Glide, OR	911	X						
<b>4. Air Ambulance Services</b>									
Name	Phone	Type of Aircraft & Capability							
LIFE FLIGHT	1-800-232-0911 / 911	Critical Care Team of Paramedic and RN 24 hr, 100'x100' LZ.							
REACH	1-800-338-4045	Critical Care Team of Paramedic and RN 24 hr, 100'x100' LZ.							
Teton Short Haul	Chilcoot Communications	Short Haul, Daytime-Cape Blanco, OR							
Wenatchee Short Haul	Chilcoot Communications	Short Haul, Daytime-Sunriver, OR							
<b>5. Hospitals</b>									
Name	Degrees Decimal Minutes		Travel Time From ICP		Phone	Helipad		Level of Care	
			Air	Gnd.		Yes	No		
Mercy Health Hospital 2700 NW Stewart Pkwy Roseburg, OR 97471	Lat:	43° 14.567 N		40 Min	2 Hrs	541-673-0611	X	Level III Trauma	
	Long:	123° 21.983 W							
Sacred Heart Hospital 3333 Riverbend Dr. Springfield, OR 97477	Lat:	44° 04.876 N		1 Hr	3 Hrs	541-222-6931	X	Level II Trauma	
	Long:	123° 01.588 W							
	Lat:	45° 32.668' N		1.5 Hrs	5 Hrs	503-413-4121	X	Level I Trauma Burn Center	
	Long:	122° 40.293' W							
<b>ICP</b>	<b>EMS Responders &amp; Capability:</b>			<b>Ben Meacham MEDL</b>			360-921-3817		
				<b>James Brown (On Site Camp Paramedic)</b>			360-775-5413		
	Equipment Available on Scene:			ALS Kit, LP15 defib, O2, OTC meds					
	Medical Emergency Channel:			Chilcoot Communications Plan					
	ETA for Ambulance to Scene:								
	Air:			25 Min					
	Ground:			30 Min					
Approved Heli-Spot:									
<b>DIV D</b>	<b>EMS Responders &amp; Capability:</b>			<b>REMS 3 Nolan Howell</b>			541-399-6555 ALS /UTV/Rope Rescue		
				<b>MED MOD 1 Marcos Garcia</b>			925-321-5013 ALS/UTV		
	Equipment Available on Scene:			ALS Kit, defib, O2					
	Medical Emergency Channel:			Chilcoot Communications Plan					
	ETA for Ambulance to Scene:								
	Air:			50 min					
	Ground:			Brice Fire to Cottage Grove 1.5 Hrs					
Approved Heli-Spot:									
<b>DIV H</b>	<b>EMS Responders &amp; Capability:</b>			<b>AMBO 55 Ben Puig</b>			214-909-5640 ALS Ambulance		
				<b>REMS 4 Brendon Church</b>			602-370-3778 ALS/UTV/Rope Rescue		
	Equipment Available on Scene:			ALS Kit, defib, O2, OTC meds					
	Medical Emergency Channel:			Chilcoot Communications Plan					
	ETA for Ambulance to Scene:								
	Air:			50 min					
	Ground:			Chilcoot Fire to Roseburg 1.5 Hrs					
Approved Heli-Spot:									
<b>Prepared By (Medical Unit Leader)</b>			<b>Date</b>		<b>Reviewed By (Safety Officer)</b>			<b>Date</b>	
Ben Meacham MEDL			10/06/2023		Ray Hershey SOF2			10/06/2023	
Signature: <i>Ben Meacham</i>					Signature: <i>Ray Hershey</i>				

# MEDICAL PLAN (ICS 206 WF)

Controlled Unclassified Information//Basic

## Medical Incident Report

**FOR A NON-EMERGENCY INCIDENT, WORK THROUGH CHAIN OF COMMAND TO REPORT AND TRANSPORT INJURED PERSONNEL AS NECESSARY.**

**FOR A MEDICAL EMERGENCY: IDENTIFY ON-SCENE INCIDENT COMMANDER BY NAME AND POSITION AND ANNOUNCE "MEDICAL EMERGENCY" TO INITIATE RESPONSE FROM IMT COMMUNICATIONS/DISPATCH.**

**Use the following items to communicate situation to communications/dispatch.**

**1. CONTACT COMMUNICATIONS / DISPATCH** (Verify correct frequency prior to starting report)

*Ex: "Communications, Div. Alpha. Stand-by for Emergency Traffic."*

**2. INCIDENT STATUS:** Provide incident summary (including number of patients) and command structure.

*Ex: "Communications, I have a Red priority patient, unconscious, struck by a falling tree. Requesting air ambulance to Forest Road 1 at (Lat./Long.) This will be the Trout Meadow Medical, IC is TFLD Jones. EMT Smith is providing medical care."*

Severity of Emergency / Transport Priority	<input type="checkbox"/> <b>RED / PRIORITY 1 Life or limb threatening injury or illness. Evacuation need is IMMEDIATE</b> <i>Ex: Unconscious, difficulty breathing, bleeding severely, 2° – 3° burns more than 4 palm sizes, heat stroke, disoriented.</i> <input type="checkbox"/> <b>YELLOW / PRIORITY 2 Serious Injury or illness. Evacuation may be DELAYED if necessary.</b> <i>Ex: Significant trauma, unable to walk, 2° – 3° burns not more than 1-3 palm sizes.</i> <input type="checkbox"/> <b>GREEN / PRIORITY 3 Minor Injury or illness. Non-Emergency transport</b> <i>Ex: Sprains, strains, minor heat-related illness.</i>	
Nature of Injury or Illness & Mechanism of Injury		<i>Brief Summary of Injury or Illness (Ex: Unconscious, Struck by Falling Tree)</i>
Evacuation Request		<i>Air Ambulance / Short Haul/Hoist Ground Ambulance / Other</i>
Patient Location		<i>Descriptive Location &amp; Lat. / Long. (WGS84)</i>
Incident Name		<i>Geographic Name + Medical (Ex: Trout Meadow Medical)</i>
On-Scene Incident Commander		<i>Name of on-scene IC of Incident within an Incident (Ex: TFLD Jones)</i>
Patient Care		<i>Name of Care Provider (Ex: EMT Smith)</i>

**3. INITIAL PATIENT ASSESSMENT:** Complete this section for each patient as applicable (start with the most severe patient)

Patient Assessment: See IRPG PAGE 106

Treatment:

**4. EVACUATION PLAN:**

Evacuation Location (if different): (Descriptive Location (drop point, intersection, etc.) or Lat. / Long.) Patient's ETA to Evacuation Location:

Helispot / Extraction Site Size and Hazards:

**5. ADDITIONAL RESOURCES / EQUIPMENT NEEDS:**

*Example: Paramedic/EMT, crews, immobilization devices, AED, oxygen, trauma bag, IV/fluid(s), splints, rope rescue, wheeled litter, HAZMAT, extrication*

**6. COMMUNICATIONS: Identify State Air/Ground EMS Frequencies and Hospital Contacts as applicable**

Function	Channel Name/Number	Receive (RX)	Tone/NAC *	Transmit (TX)	Tone/NAC *
COMMAND					
AIR-TO-GRND					
TACTICAL					

**7. CONTINGENCY: Considerations:** If primary options fail, what actions can be implemented in conjunction with primary evacuation method? Be thinking ahead..

**8. ADDITIONAL INFORMATION:** Updates/Changes, etc.

**REMEMBER:** Confirm ETAs of resources ordered. Act according to your level of training. Be Alert. Keep Calm. Think Clearly. Act Decisively.