

**DINNER-GRIZZLY-BRICE CREEK
CHILCOOT-RIDGE
Incident Action Plan**

Sunday October 08, 2023
Operational Period: 0700-1800

Dinner OR-UPF-000357 P6 QLJ7 (0615)
Grizzly OR-UPF-000341 P6 QL0W (0615)
Brice Creek OR-UPF-000359 P6 QLJ4 (0615)
Ridge OR-UPF-000346 P6 QLF4 (0615)
Chilcoot OR-UPF-000345 P6 QLF5 (0615)
WA-DNR 221-ICU

- MAPS
- IAP
- CHECK-IN
- Crew Swaps



Health & Safety Message

Human Factor Watch Outs

Watching out for yourself, coworkers, subordinates, and your supervisor is a primary responsibility for everyone involved in high-risk activities. Watch outs are not just for the tactical environment. The Human Factor Watch Outs are designed to create an opportunity for you to take a tactical pause and re-evaluate your situation.

- Your briefing was unclear.
- You are not getting answers to your questions.
- You are not getting clear acknowledgement of your message.
- You are encountering hazards that are not mentioned in your briefing.
- Your team/crew is not debriefing.
- Your tempo is too high to maintain command and control.

**Take a moment to assess your situation.
Stop, Think, and Talk before Acting.**

Notes

FINANCE MESSAGE

Finance Email: 2023.chilcoot.finance@firenet.gov

Finance Phone: 808-298-1386

This incident requires electronic documentation. Please email your time to the Finance email address daily. Scanned PDF documents are preferred. Don't forget to add your resource order number in the upper left hand corner of your time.

Required Documents

Overhead, Agency Crews & Cooperators	Contract Resources
Finance docs needed: Resource Order, Manifest, Cooperative Agreement, Casual Hire Form w/ECI# (as applicable)	Finance docs needed: Resource Order, Manifest, Full Contract/Agreement, Certifications <i>(if required)</i> Pre-Inspection
Daily: CTRs, Shift Tickets	Daily: CTRs, Shift Tickets, receipts (claims, etc.) NOTE: Document travel times and odometer readings.
Demob: Signed OF-288; Signed OF-286	Demob: Contractor Evaluations, Shift Tickets, receipt(s) for Addition/Deductions, Post-Inspection, Signed OF-286
Additional Incident Information: See cover page of the IAP for incident numbers and financial codes.	Please call finance regarding issues with your time: E-19 Kent Corp E-214 Bob Murray Logging O-18 Toms Timber E-231 Mark Jones Trucking

For your entertainment...Where do frogs deposit their money? In a river bank!

LOGISTICS

Kitchen Hours

- Breakfast 0600 – 0800

Showers

- 0500 – 0800

Weed Wash (20016 Umpqua Hwy, turn at Bug Farm RD)

- 0700 – 1800

**Strader ICP will be disbanded today.
Take your gear with you.**

INCIDENT OBJECTIVES	1. Incident Name Chilcoot, Grizzly, Ridge, Dinner, Brice Creek	2. Date October 07, 2023	3. Time 2000
----------------------------	---	------------------------------------	------------------------

4. Operational Period: 10/08/2023 0700-1800

5. General Objectives:

Implement a FULL suppression strategy for Chilcoot, Grizzly, Brice Creek, Dinner and Ridge fires:

- Provide for firefighter and public safety through hazard identification and application of a shared risk management process.
- Coordinate public information to provide timely updates to agency partners, cooperators and the public.
- Coordinate suppression and repair activities with READS to minimize impacts on the landscape.
- Effectively manage and track costs for all five incidents.
- Coordinate with agency leadership/administrators to ensure effective and efficient management of firefighting resources.

Chilcoot, Grizzly:

- Chilcoot: provide full incident containment through suppression actions. Grizzly: monitor and evaluate conditions that could lead to fire growth, identify and validate strategic indirect lines.
- Coordinate with ODF-DFPA, as needed, for changing conditions specific to fire progression potentially impacting private lands.
- Repair indirect lines not currently identified as potential containment features, identify primary line repair options as applicable.
- Evaluate a PACE model for the Grizzly fire, develop near-term and long-term modeling based on future potential.
- Work with partner/stakeholders (Sierra Pacific) to access, manage private lands within fire perimeter.

Dinner, Ridge, Brice Creek:

- Achieve full containment with suppression actions and ensure adequate mop-up is conducted to reduce the threat of escape.
- Implement full repair on all indirect line construction.
- Evaluate repair needs for primary line construction.
- Monitor access routes "Ingress/Egress" and minimize impact to road systems.
- Backhaul all equipment as applicable.

5a. Incident Requirements

- Priority values are firefighter and public safety, critical infrastructure, private land and natural resources.
- Provide Agency Administrator updates and briefings on incident status as conditions evolve.
- Firefighting operations will implement tactics that offer the highest probability of success to minimize impacts to the landscape and minimize unnecessary exposure to firefighters.

5b. Leaders Intent

- **Safety:** Firefighter, public and aviation safety will be addressed through hazard/exposure risk mitigation processes.
- **Risk Management:** Utilize an aligned risk assessment process that mitigates exposure to firefighters through evaluation of conditions during the duration of the incident.
- **Communication:** Keep Agency Administrators and firefighters informed of strategic actions, accomplishments and challenges.
- **Operations:** Make informed strategic/tactical decisions suppressing the fire in the right geographic locations with the appropriate resources having the highest probability of success.
- **Stakeholders:** Collaborate with local partners, officials and landowners to provide situational updates pertinent to the fire.
- **Logistics:** Provide support ensuring food, water and shelter for incident responders.
- **Human Resources:** Ensure that all incident personnel are treated with dignity and respect, while having zero tolerance for harassment, alcohol, or illegal drug use.
- **Public Information:** Provide timely and accurate information through media outlets, trap lines, briefings, community meetings and social platforms.
- **Finance:** Monitor and communicate incident cost associated with meeting incident objectives.
- **Planning:** Provide incident documentation, resource tracking and accurate data management.

6. Weather Forecast & General Safety Message for Period – See Attached

7. Attachments (mark if attached)

<input checked="" type="checkbox"/> Organization List - ICS 203	<input checked="" type="checkbox"/> Weather Forecast	<input checked="" type="checkbox"/> Safety Message
<input checked="" type="checkbox"/> Div. Assignment Lists - ICS204	<input checked="" type="checkbox"/> Fire Behavior Forecast	<input type="checkbox"/> Medical Emergency Com Plan
<input checked="" type="checkbox"/> Communications Plan - ICS 205	<input type="checkbox"/> Incident Map	<input type="checkbox"/>
<input checked="" type="checkbox"/> Medical Plan - ICS 206	<input checked="" type="checkbox"/> Air Operations - ICS 220	<input type="checkbox"/>

9. Prepared by

Aileen Nichols

9. Approved by (Incident Commander)

Brian Gales

ORGANIZATION ASSIGNMENT LIST	
1. Incident Name Chilcoot/Ridge/Grizzly/Dinner/Brice Creek	
2. Date October 7, 2023	3. Time 1830
4. Operational Period October 8, 2023 0700-1800	
Position	Name
NWIMT 13 LWD 10/08/2023	
5. Incident Commander and Staff	
Incident Commander	Brian Gales
Safety Officer	Ray Hershey
Information Officer - Virtual	Randall Rishe
Deputy Information Officer	Erin Phillips
Human Resource Specialist	Margaret Dietrich
6. Agency/Organization Representative(s):	
USFS UPF Agency Administrator	David Anderson
USFS UPF Agency Administrator - t	Mark Sommer
USFS WIF Agency Administrator	Molly Juillerat
BLM Rosberg	Heather Whitman
BLM Rosberg	Mike Korn
Oregon Department of Forestry	Chris Cline
Oregon Department of Forestry	John Flannigan
DFPA	Aaron Whitely
Lead READ	Jed Hancock
Lead READ - t	Luis Palacios
7. Planning Section	
Plans Chief	Aileen Nichols
Deputy Plans Chief	Darrin Henderson
Resources Unit	Meredith Butcher
Documentation Unit - Virtual	Robert Wandel
Demob Unit	Laura Backlund
Situation Unit - t	Laurie Bergvall
Fire Behavior Analyst	Dean Warner
Computer Specialist	Matt Perry
Computer Specialist - t	Cassandra Heide
Strategic Operational Planner - t	Scott Brewer
8. Logistics Section	
Logistics Chief - t	Cindy Preston
Security Manager	Jack Paulsen
Supply Unit Leader	Jon Byerly
Ordering Manager - t	Robert Yarnall
Communications Unit Ldr - t	Bruce Hanna
Incident Comm Mgr	Alandra Swords
Communications Tech	Brian Wolfenburger
Food Unit Leader	Pat Young
Facilities Unit Leader	Keith Yonaka
Base Camp Manager - t	Jake Zlotnick
Medical Unit Leader	Ben Meacham
Medical Unit Leader	James Brown
Field Medical Unit Leader	Mark Notaras
Ground Support Unit	Billie Hunter

9. Operations Section			
Operations (Field)		Shawn Jaca Whitney Machado - t	
Operations (Planning)		Brad Reed Tim Cawley-Murphree - t	
a. Branch			
Branch Director			
Division Supervisor	D	Grizzly Dinner Brice Creek	Jon Campbell Billy Turner - t
Division Supervisor	H	Chilcoot Ridge	Robert Boles Kenny Peasley - t
Manager	Staging Area		Rick Long
b. Branch			
Branch Director			
Division Supervisor			
Division Supervisor			
Division Supervisor			
Group Supervisor			
c. Night			
Division Supervisor			
d. Air Operations Branch			
Air Operations		Nancy Barker	
Air Support Group Supervisor		Jim Dotson	
Air Support Group Supervisor - t		George Leite	
10. Finance Section			
Finance Chief		Veronika Klukas	
Deputy Finance Chief		Paula James	
Cost Unit - Virtual		Lori Price	
Proc Unit Leader		Laurette Gaylord	
Proc Unit Leader - t		Eric Soto	
Equipment Time Recorder		Clay Webb	
EQTR/In Box Manager - t		Barry Purdy	
PREPARED BY: Meredith Butcher			

Spot Forecast for Chilcoot/Grizzly...NW IMT 13
National Weather Service MEDFORD OR
401 PM PDT Sat Oct 7 2023

.DISCUSSION...It will be slightly cooler Sunday, but still very warm and dry with clear skies. High clouds arrive late Sunday night ahead of a cold front. The front is anticipated to move through Monday with rain. A cool and wet active pattern will follow with periods of showers through Wednesday evening. Around an inch of rain is expected in the 24 hours from Monday afternoon through Tuesday afternoon, and another half inch to an inch in the 30 hours from the start of Tuesday evening through the end of Wednesday evening.

.SUNDAY...

Sky/weather.....Sunny (10-20 percent).
Max temperature.....Around 76.
Min humidity.....27 percent.
Wind (20 ft).....Light winds becoming southwest 5 to 8 mph in
the afternoon.
Mixing height.....7600 ft AGL.
CWR.....0 percent.
LAL.....1.

.SUNDAY NIGHT...

Sky/weather.....Partly cloudy (25-35 percent) then becoming
mostly cloudy (70-80 percent). Slight chance of
rain showers overnight.
Min temperature.....Around 53.
Max humidity.....79 percent.
Wind (20 ft).....Southwest winds 5 to 8 mph shifting to the
south 5 mph overnight.
Mixing height.....200 ft AGL.
CWR.....0 percent.
LAL.....1.

.COLUMBUS DAY...

Sky/weather.....Cloudy (90-100 percent). Rain showers, starting
around 8 am.
Max temperature.....Around 56.
Min humidity.....50 percent.
Wind (20 ft).....South winds 5 to 8 mph shifting to the
southwest around 8 mph in the afternoon.
Mixing height.....2400 ft AGL.
CWR.....93 percent.
LAL.....1.

Fire Behavior Forecast #39

Incident:	Number:	TYPE OF FIRE: Wildfire
Grizzly	OR-UPF-000341	DATE/TIME ISSUED: 10/7/23 1900
Chilcoot	OR-UPF-000345	OPERATIONAL PERIOD: 10/8/2023 Day Shift
Ridge	OR-UPF-000346	FBAN: Dean Warner
Dinner	OR-UPF-000357	Signed:
Brice Creek	OR-UPF-000359	

Weather Summary - See Incident Weather Forecast: Drying trend, rain returns Monday.

Fuels: Fire areas are primarily composed of *Timber Litter* (TL5), and *Timber Understory* (TU5) with *moss/lichen present in most stands*. Mature conifer stands with western hemlock and Douglas-fir, often have heavy surface fuel loading. 30 to 50+ year old second growth conifer stands contain needle litter and some down woody debris. Brush and reprod are present in open stands of mature timber.

ERC and Fuel Moisture Data	Forecast ERC (Percentile)	1 hour FM % yesterday	10 hour FM % yesterday	100 hour FM % yesterday	1000 hour FM % yesterday
Division Delta	77 ⁺⁹	7 ^{N_C}	9 ⁻¹	14 ⁻²	20 ⁻²
Division Hotel	67 ⁺⁸	10 ⁺¹	13 ⁺¹	18 ⁺¹	22 ^{N_C}

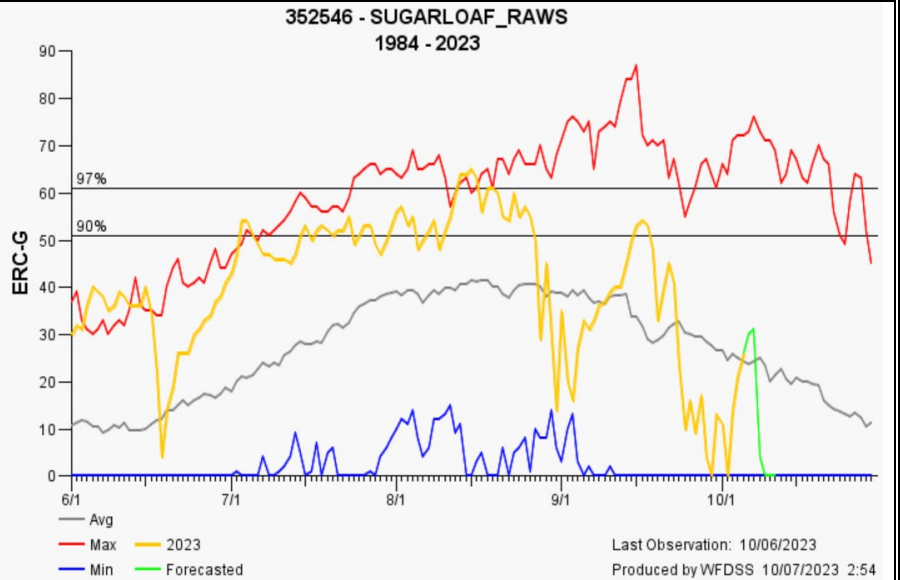
OUTPUTS: Expected Fine Dead Fuel Moisture: 6% POI: 40%

Fire Behavior: Minimal Atmosphere: Unstable Max. spot distance: ¼ mile LAL: 1	Fuel/Type Model	Maximum ROS	Maximum Flame Length
	Timber Litter/TL5	3 ch/hr	2 ft.
	Timber Understory/TU5	5 ch/hr	5 ft.

Expected Fire Behavior is Based on the Warmest, Driest, Windiest Conditions Forecasted.

Today: Last day of dry weather before rain returns. Solar radiation will be less intense based on cloud cover. Based on the lack of smoke production, heavy fuels appear to have ceased burning. Given the warm dry weather, a torching tree or short uphill run cannot be ruled out.

Potential: ERC is reaching levels where active fire was last observed. However, the next three days of rainy weather will drop ERCs to a point where an appreciable rebound will be difficult to achieve.



Air Operations

Inversion should clear by noon.

Safety:

Fire weather conditions will be at the peak for drying fuels. While our fires have not exhibited much fire activity for several days the previous five days of drying may provide a change. Don't get surprised, remain alert for any changes and adjust actions as necessary to meet our mission objectives.

DIVISION ASSIGNMENT LIST			1. Branch		2. Division D page 1 Dinner/Grizzly/Brice Creek	
3. Incident Name Umpqua Fires			4. Operational Period Date: 10/08/2023 Time: 0700-1800			
5. Operations Personnel						
Operations Chief		Shawn Jaca Whitney Machado - t		Division Supervisor		Jon Campbell Billy Turner - t
Safety Officer		Ray Hershey		Air Attack		
6. Resources Assigned this Period						
Strike Team/Task Force/Resource Designator		Leader	# Persons	LWD	Drop Off PT./Time	Pick Up PT./Time
1	O-362 TFLD	Robert Clark Jr	1	10/14	Cottage Grove/0700	Cottage Grove/1700
2	O-371 TFLD	Matthew Roby	1	10/12	Cottage Grove/0700	Cottage Grove/1700
3	O-408 TFLD	Eric Bader	1	10/12	Cottage Grove/0700	Cottage Grove/1700
4						
5	O-355 HEQB	Matthew Jones	1	10/11	Cottage Grove/0700	Cottage Grove/1700
6	O-382 HEQB - t	Garret Watson	1	10/12	Cottage Grove/0700	Cottage Grove/1700
7						
8	O-365 FELB - t	Daniel Horwath	1	10/12	Cottage Grove/0700	Cottage Grove/1700
9						
10	O-18 FMOD Toms Timber	Tom Conway	2	10/10	Cottage Grove/0700	Cottage Grove/1700
11	O-20 FMOD A and C Cutting	Skyler Gardner	2	10/20	Cottage Grove/0700	Cottage Grove/1700
12	O-21 FMOD C&K Wildland	Kevin Schuyler	2	10/20	Cottage Grove/0700	Cottage Grove/1700
13	O-22 FMOD B&M Wildfire	Nick Browning	2	10/20	Cottage Grove/0700	Cottage Grove/1700
14						
15	O-372 WFM2 Metolius	Stephen Hanson	11	10/12	Cottage Grove/0700	Cottage Grove/1700
16						
17	E-28 FEL1 Inland Timber Co	Mikeal Stephenson	2	10/20	Cottage Grove/0700	Cottage Grove/1700
18						
19	E-30 SKD1 Mark Jones Trucking	Zakkary Dewbre	2	10/20	Cottage Grove/0700	Cottage Grove/1700
20		Personnel	29			
7. Control Operations: Task: Patrol Grizzly fire and take suppression actions as appropriate by utilizing ground resources and aircraft as necessary. Continue chipping and dozer line repair on the Grizzly fire. Continue hand felling hazard trees on Division D Brice Creek. Utilize Field Maps to document suppression repair that is ready for READ approval. Purpose: Prevent fire from impacting values at risk, including communities to the west, commercial timberlands and T&E habitat. Provide for firefighter and public safety. Reduce the risk to responders and public from hazard trees. End state: Achieve full containment on the Dinner and Brice Creek fires. Monitor the Grizzly fire and take suppression action to ensure that it stays within its current footprint. Ensure suppression repair meets turnback standards and backhaul non-essential supplies. Meet Umpqua National Forest Hazard Tree Abatement Plan.						
8. Special Instructions: ** If fire behavior warrants on the Grizzly fire, refer to strat map. Active Helispots Identified on Division Map: Dinner H-41 43°42.493'N x 122°44.287'W Brice Creek H-161 43°37.352'N x 122°31.593'W Grizzly H-191 43°35.017'N x 122°37.313'W						
9. Division/Group Communication Summary						
See Communications Plan						
Prepared by (Resource Unit Ldr) <i>Meredith Butcher</i>		Approved by (Planning Sect. Ch.) <i>Aileen Nichols</i>		Date 10/07/2023	Time 2000	

DIVISION ASSIGNMENT LIST			1. Branch		2. Division D page 2 Dinner/Grizzly/Brice Creek	
3. Incident Name Umpqua Fires			4. Operational Period Date: 10/08/2023 Time: 0700-1800			
5. Operations Personnel						
Operations Chief		Shawn Jaca Whitney Machado - t		Division Supervisor		Jon Campbell Billy Turner - t
Safety Officer		Ray Hershey		Air Attack		
6. Resources Assigned this Period						
Strike Team/Task Force/Resource Designator	Leader	# Persons	LWD	Drop Off PT./Time	Pick Up PT./Time	
1 E-29 LOGP Dean Innovations	Steven Lazott	2	10/20	Cottage Grove/0700	Cottage Grove/1700	
2 E-35 LOGP Miller Timber	Josiah Fox	2	10/21	Cottage Grove/0700	Cottage Grove/1700	
3						
4 E-32 LOGL Rose Logging	Tod Phibbs	2	10/20	Cottage Grove/0700	Cottage Grove/1700	
5 E-230 LOGL Pacific Ridgeline	Brett Miller	2	10/12	Cottage Grove/0700	Cottage Grove/1700	
6						
7 E-33 FORW Miller Timber	Evan Tontini	2	10/21	Cottage Grove/0700	Cottage Grove/1700	
8 E-45 FORW Miller Timber	Robert Mann	2	10/21	Cottage Grove/0700	Cottage Grove/1700	
9						
10 E-234 CHSL Pacific Ridgeline	Zach Jafarzadeh	2	10/18	Cottage Grove/0700	Cottage Grove/1700	
11						
12 O-129 READ	Jed Hancock	1	10/12	Strader ICP/0700	Roseburg/1700	
13 O-238 REAF	Chris McGrath	1	10/16	Strader ICP/0700	Roseburg/1700	
14 O-381 THSP	Dan Smith	1	10/20	Strader ICP/0700	Roseburg/1700	
15						
16 O-360 REMS 4	Brendon Church	4	10/19	Strader ICP/0700	Cottage Grove/1700	
17						
18	Personnel	18				
7. Control Operations: Task: Patrol Grizzly fire and take suppression actions as appropriate by utilizing ground resources and aircraft as necessary. Continue chipping and dozer line repair on the Grizzly fire. Continue hand felling hazard trees on Division D Brice Creek. Utilize Field Maps to document suppression repair that is ready for READ approval. Purpose: Prevent fire from impacting values at risk, including communities to the west, commercial timberlands and T&E habitat. Provide for firefighter and public safety. Reduce the risk to responders and public from hazard trees. End state: Achieve full containment on the Dinner and Brice Creek fires. Monitor the Grizzly fire and take suppression action to ensure that it stays within its current footprint. Ensure suppression repair meets turnback standards and backhaul non-essential supplies. Meet Umpqua National Forest Hazard Tree Abatement Plan.						
8. Special Instructions: ** If fire behavior warrants on the Grizzly fire, refer to strat map. Active Helispots Identified on Division Map: Dinner H-41 43°42.493'N x 122°44.287'W Brice Creek H-161 43°37.352'N x 122°31.593'W Grizzly H-191 43°35.017'N x 122°37.313'W						
9. Division/Group Communication Summary						
See Communications Plan						
Prepared by (Resource Unit Ldr) <i>Meredith Butcher</i>		Approved by (Planning Sect. Ch.) <i>Aileen Nichols</i>		Date 10/07/2023	Time 2000	

DIVISION ASSIGNMENT LIST			1. Branch		2. Division H page 1 Chilcoot/Ridge	
3. Incident Name Umpqua Fires			4. Operational Period Date: 10/08/2023 Time: 0700-1800			
5. Operations Personnel						
Operations Chief		Shawn Jaca Whitney Machado - t		Division Supervisor		Robert Boles Kenny Peasley - t
Safety Officer		Ray Hershey		Air Attack		
6. Resources Assigned this Period						
Strike Team/Task Force/Resource Designator	Leader	# Persons	LWD	Drop Off PT./Time	Pick Up PT./Time	
1 O-363 TFLD	Mitchell Stiles	1	10/12	Strader ICP/0700	Roseburg/1700	
2 O-353 HEQB	Anthony Weidner	1	10/12	Strader ICP/0700	Roseburg/1700	
3 O-354 HEQB	Steven Lozano	1	10/13	Strader ICP/0700	Roseburg/1700	
4 O-356 HEQB - t	Colin Thompson	1	10/12	Strader ICP/0700	Roseburg/1700	
5 O-357 HEQB - t	Kyle Murphy	1	10/12	Strader ICP/0700	Roseburg/1700	
6 O-358 HEQB - t	Sterling Smith	1	10/12	Strader ICP/0700	Roseburg/1700	
7						
8 C-57 CR2I Mt Baker IA	Erik Usher	24	10/12	Strader ICP/0700	Roseburg/1700	
9 C-58 CRW2 UMF Vet Crew	Andrew Goshgarian	18	10/10	Strader ICP/0700	Roseburg/1700	
10						
11 O-406 FMOD Timber Tippers #1	Gabe Raddekopp	2	10/20	Strader ICP/0700	Roseburg/1700	
12 O-407 FMOD Timber Tippers #4	Jerald Floyd	2	10/20	Strader ICP/0700	Roseburg/1700	
13						
14 E-239 SKD1 Mark Jones	Beau Morrell	2	10/20	Strader ICP/0700	Roseburg/1700	
15						
16 E-240 LOGL Rose Logging	Jeremy Deyroot	2	10/20	Strader ICP/0700	Roseburg/1700	
17 E-241 LOGL Rose Logging	Justin Rainwater	2	10/20	Strader ICP/0700	Roseburg/1700	
18						
19 E-242 FORW Stafford Reload	Noah Wible	2	10/20	Strader ICP/0700	Roseburg/1700	
20						
21 E-114 EXC2 Scott Marshall	Cindy Marshall	2	10/20	Strader ICP/0700	Roseburg/1700	
22 E-231 EXC2 Mark Jones	Bill Delaney	2	10/30	Strader ICP/0700	Roseburg/1700	
23	Personnel	64				
7. Control Operations: Task: Continue suppression repair and hauling on the Chilcoot fire. Utilize Field Maps to document suppression repair that is ready for READ approval. Purpose: Prevent fire from impacting values at risk, including communities, commercial and T&E habitat. Provide for firefighter and public safety. End state: Achieve full containment on the Chilcoot and Ridge fires. Suppression repair meets turnback standards and non-essential supplies have been back hauled.						
8. Special Instructions: Active Helispots identified on Division Maps: Chilcoot H-57 43°26.132'N x 122°42.886'W, H-51 43°23.330'N x 122°42.411'W H-1 43°24.915'N x 122°44.923'W, H-43 43°21.324'N x 122°43.723'W Ridge H-291 43°23.840'N x 122°31.291'W						
9. Division/Group Communication Summary						
See Communications Plan						
Prepared by (Resource Unit Ldr) <i>Meredith Butcher</i>			Approved by (Planning Sect. Ch.) <i>Aileen Nichols</i>		Date 10/07/2023	Time 2000

DIVISION ASSIGNMENT LIST			1. Branch		2. Division H page 2 Chilcoot/Ridge	
3. Incident Name Umpqua Fires			4. Operational Period Date: 10/08/2023 Time: 0700-1800			
5. Operations Personnel						
Operations Chief		Shawn Jaca Whitney Machado - t		Division Supervisor		Robert Boles Kenny Peasley - t
Safety Officer		Ray Hershey		Air Attack		
6. Resources Assigned this Period						
Strike Team/Task Force/Resource Designator	Leader	# Persons	LWD	Drop Off PT./Time	Pick Up PT./Time	
1 E-211 CHSL Pacific Ridgeline	Joseph Schlabach	2	10/12	Strader ICP/0700	Roseburg/1700	
2 E-233 CHSL Lane Forest	George Turney	2	10/20	Strader ICP/0700	Roseburg/1700	
3						
4 E-227 Dump 10 Yard JLC	Danny Amon	1	10/12	Strader ICP/0700	Roseburg/1700	
5 E-228 Dump 10 Yard JLC	Mark Angell	1	10/12	Strader ICP/0700	Roseburg/1700	
6 E-235 Dump 10 Yard Pac Ridgeline	Trent Jones	1	10/16	Strader ICP/0700	Roseburg/1700	
7 E-236 Dump 10 Yard Lee Roy Belloir	Ross Belloir	1	10/16	Strader ICP/0700	Roseburg/1700	
8						
9 E-229 T2 Backhoe JLC	Coby Patterson	1	10/12	Strader ICP/0700	Roseburg/1700	
10						
11 O-129 READ	Jed Hancock	1	10/12	Strader ICP/0700	Roseburg/1700	
12 O-352 READ - t	Luis Palacios	1	10/11	Strader ICP/0700	Roseburg/1700	
13 O-238 REAF	Chirs McGrath	1	10/16	Strader ICP/0700	Roseburg/1700	
14 O-386 REAF	Cynthia Armentrout	1	10/14	Strader ICP/0700	Roseburg/1700	
15 O-385 REAF - t	Natalie Mills	1	10/16	Strader ICP/0700	Roseburg/1700	
16 O-348 REAF	Brian Rhoten	1	10/09	Strader ICP/0700	Roseburg/1700	
17 O-381 TSHP	Dan Smith	1	10/20	Strader ICP/0700	Roseburg/1700	
18						
19 E-142 Med MOD1 Cardinal Medical Solutions	Marcas Garcia	2	10/17	Strader ICP/0700	Roseburg/1700	
20 E-193 AMBO 55 Front Line	Ben Puig	2	10/12	Strader ICP/0700	Roseburg/1700	
21	Personnel	20				
7. Control Operations:						
Task: Continue suppression repair on the Chilcoot fire. Utilize Field Maps to document suppression repair that is ready for READ approval.						
Purpose: Prevent fire from impacting values at risk, including communities, commercial and T&E habitat. Provide for firefighter and public safety.						
End state: Achieve full containment on the Chilcoot and Ridge fires. Suppression repair meets turnback standards and non-essential supplies have been back hauled.						
8. Special Instructions:						
Active Helispots identified on Division Maps:						
Chilcoot						
H-57 43°26.132'N x 122°42.886'W, H-51 43°23.330'N x 122°42.411'W						
H-1 43°24.915'N x 122°44.923'W, H-43 43°21.324'N x 122°43.723'W						
Ridge						
H-291 43°23.840'N x 122°31.291'W						
9. Division/Group Communication Summary						
See Communications Plan						
Prepared by (Resource Unit Ldr) <i>Meredith Butcher</i>			Approved by (Planning Sect. Ch.) <i>Aileen Nichols</i>		Date 10/07/2023	Time 2000

AIR OPERATIONS SUMMARY 220		Prepared/Approved: Nancy Barker		Prepared: 10/07/2023		Prepared Time: 1800 hrs.	
1. INCIDENT NAME: UMPQUA FIRES		2. OPERATIONAL PERIOD 10/08/2023		START TIME: 0700	END TIME: 1800	SUNRISE: 0718	SUNSET: 1841

3. REMARKS (Safety Notes, Hazards, Air Operations Special Equipment, etc.):
Steep terrain * Shadow effects

All GPS data to be collected in DEGREES, DECIMAL MINUTES.

Aircraft costs daily to: 2023.chilcoot.finance@firenet.gov and cc to 2023.chilcoot.airops@firenet.gov

4. READY ALERT AIRCRAFT: N350HQ Central Montana (CMH) Short Haul in Camp Blanco State Park. N35HX Wenatchee Short Haul in Sun River Order through Roseburg Aircraft Desk 541-957-3325		5. TFRs: None	
8. FIXED-WING Avail/ Type/ Make-Model/ N#/ Base AIRTANKERS: ORDER THRU ATGS ATGS – order through Roseburg Dispatch Landing Sites on Fire: See pilot map for locations. Know the helispots near your work area. Glide Helibase 43°18.922'N X 123°04.415'W 700' TANK DIPS: See pilot map LAKE DIPS: Gertrude Lake 43°35.698'N X 122°32.452'W 3990' Crawfish Lake 43°37.502'N X 122°42.222'W 4794' Crystal Lake 43°35.602'N X 122°38.655'W 4650' Elephant Lake 43°35.742'N X 122°39.237'W 5126' Helibase Comm Trailer – Incident Response (E-19)			
7. FREQUENCIES		AM	FM
A/A Forest Primary		118.5750	
A/G 49 Forest Primary			168.0375
A/G 81 Forest Secondary			166.9500
Tac Div D Tone 103.5 (TX/RX)			168.3875
Tac Div H Tone 103.5 (TX/RX)			167.3750
Deck Tone 156.7 (TX/RX)			163.1000
VMED29 Tone 156.7 (TX/RX)			155.3475
CTAF			122.8
Air Guard Tone 110.9 (TX)			168.6250

FAA N#	T Y	MAKE/ MODEL	BASE	START	AVAIL	REMARKS	Helispots	
							Div D	Div H
933CH (A-39)	2	Bell 205 A1	Glide	0800	0900	7 personnel Released at 1200	H-41 Dinner 43°42.493'N x 122°44.287'W	H-57 Chilcoot 43°26.132'N x 122°42.886'W
							H-161 Brice Creek 43°37.352'N x 122°31.593'W	H-51 Chilcoot 43°23.330'N x 122°42.411'W
						H-191 Grizzly 43°35.017'N x 122°37.313'W	H-1 Chilcoot 43°24.915'N x 122°44.923'W	
							H-43 Chilcoot 43°21.324'N x 122°43.723'W	
							H-291 Ridge 43°23.840'N x 122°31.291'W	

INCIDENT RADIO COMMUNICATIONS PLAN (ICS 205)

1. Incident Name:		2. Date Prepared:		3. Operational Period:							
CHILCOOT		Date: 10/06/23		Date/Time from: 10/08/23 - 0700							
(CHILCOOT-GRIZZLY-RIDGE-BRICE-DINNER)				Date/Time To: 10/08/23 - 1800							
4. Radio Channel Use:											
Zone/ Group	Ch#	Function	Channel Name	Assignment	RX Freq	RX Tone/NAC	TX Freq	TX Tone/NA C	Mode (A/D)	Remarks	
	1	TACTICAL	NORT DIR	NONE	170.5500	103.5	170.5500	103.5	A	UNASSIGNED	
	2	COMMAND	REDBUTTE	ALL DIV	170.5500	103.5	164.8000	179.9	A	LOCATED ON RED BUTTE (S)	
	3	COMMAND	CHILCOOT	ALL DIV	170.5500	103.5	164.8000	192.8	A	LOCATED ON CHILCOOT RDG (S)	
	4	COMMAND	FAIRVIEW	ALL DIV	170.5500	103.5	164.8000	173.8	A	LOCATED ON FAIRVIEW MTN (N)	
	5	COMMAND	DOEHD	ALL DIV	170.5500	103.5	164.8000	186.2	A	LOCATED ON DOEHEAD MTN (S)	
	6	TACTICAL	UPF PRJ	NONE	163.7125	103.5	163.7125	103.5	A	UNASSIGNED	
	7	COMMAND	ROD LANE	NONE	170.0250	000.0	166.3000	107.2	A	UNASSIGNED	
	8	TACTICAL	UPF REC	DIV D	168.3875	103.5	168.3875	103.5	A	DELTA DIVISION TAC	
	9	COMMAND	INTEROP	NONE	152.6600	151.4	157.8600	110.9	A	UNASSIGNED	
	10	TACTICAL	CINNAMON	NONE	171.4250	103.5	166.0000	192.8	A	UNASSIGNED	
	11	TACTICAL	NURD PRJ	NONE	169.1250	103.5	169.1250	103.5	A	LOCAL TAC FOR N UMP R.D.	
	12	TACTICAL	DLRD PRJ	NONE	168.2625	103.5	168.2625	103.5	A	UNASSIGNED	
	13	TACTICAL	CG/IT PRJ	DIV H	167.3750	103.5	167.3750	103.5	A	HOTEL DIVISION TAC	
	14	AIR - GROUND	VMED29	ALL	155.3475	156.7	155.3475	156.7	A	MEDICAL EVAC	
	15	AIR - GROUND	A/G-49 PRI	ALL	168.0375	000.0	168.0375	000.0	A	AIR TO GROUND OPS, PRIMARY	
	16	AIR - GROUND	A/G-81 SEC	ALL	166.9500	000.0	166.9500	000.0	A	AIR TO GROUND OPS, SECONDARY	
5. Special Instructions						CURRENT CLONE: UPF23A NORT					
6. Prepared By						Name: Bruce Hanna					
(Communications Unit Leader)						Signed: /s/ Bruce Hanna					
Communications staffed 0700-1800						CHILCOOT COMMUNICATIONS: (949) 648-1591					
						Date/Time: 10/06/23 17:30					

Thank You

We're demobing and going home tomorrow. NW13 would like to thank each of you for the professional and competent manner in which you approached your fire assignment.

You were proactive at maintaining good work relationships and creating a harassment-free work environment. Due to your efforts, personnel-related issues on this incident have been minimal.

Thank you for a job well done. Our team looks forward to working with you again on future fire assignments.



“Be kind whenever possible. It is always possible.” – Dalai Lama



CHECK-IN Process All Resources

STEP 1. Scan the QR code to fill out and submit the online check-in form.

- Have your resource order ready, as many questions reference it.

STEP 2. Email your MANIFEST (if appropriate).

Include your request number in the subject line (e.g, E-118, 0-48).

- If you are assigned to the Grizzly, Dinner or Brice Creek incidents, email to 2023.dinner.checkin@firenet.gov
- If you are assigned to the Chilcoot or Ridge incidents, email to 2023.chilcoot.checkin@firenet.gov

STEP 3. See Finance page in IAP for further instructions on how to check in with finance.

STEP 4. Complete vehicle inspection as instructed on your resource order, including contract inspection as needed.

If you have any issues, please contact Check-in at 971-727-5061 or by email at 2023.chilcoot.checkin@firenet.gov or 2023.dinner.checkin@firenet.gov

Dinner-Grizzly-Brice Creek- Chilcoot-Ridge Demob Check-Out Form

RO # _____ Resource Name _____ Fire: _____ Date: _____

Initials

Follow these steps in the order below:

- _____ 1. **Weed Wash** – ALL line resources that went off-road will need to go through a Weed Wash. **If not needed, proceed to step 2.**
- _____ 2. **Ground support** – Contractors must stop to sign their release inspection. The inspection is optional for agency resources. **Agency resources proceed to step 3.**
- _____ 3. **Supply** – Return any items you checked out. All units must have initials from SUPPLY confirming all equipment has been returned.
- _____ 4. **Communications** – Return any items you checked out. All units must have initials from COMMUNICATIONS confirming all radio equipment has been returned.
- _____ 5. **Finance** – Proceed to FINANCE to receive your final timesheet. Having ALL your time turned in will GREATLY speed up the process.
- _____ 6. **Demob – Final step.** Return this completed Demob Check-Out form and any Documentation to Demob/Check-in. Documentation can also be emailed to 2023.chilcoot.docs@firenet.gov. Let Demob know your estimated time of departure, arrival time and destination.

When all above information had been submitted to Demob they will notify Expanded Dispatch to release you from the incident.

ALL AIR TRAVELERS

Submit your air request 72 hours prior to flight date through the QR code on the IAP Cover. Call 971-727-5061 for any questions or assistance.

DMOB LIST FOR 10/8/2023

DINNER-BRICE CREEK-GRIZZLY FIRES			
10/08/2023	O-15	REMOTE ACCESS	MESU
CHILCOOT-RIDGE FIRES			
10/08/2023	E-115	ED STAUB & SONS PETROLEUM	FUT1
10/08/2023	E-214	BOB MURRAY LOGGING	EXC4
10/08/2023	E-215	SUTPHIN TRUCKING	EXC4
10/08/2023	E-219	EXTREME WILDLAND	HND1
10/08/2023	O-334	WILLIAMS, DONNA	RCDM
10/08/2023	O-377	SANFORD, ANDREW	SEC1

DMOB LIST FOR 10/9/2023

DINNER-BRICE CREEK-GRIZZLY FIRES			
10/09/2023	No resources demobing		
CHILCOOT-RIDGE FIRES			
10/09/2023	E31	ROGUE RIVER FIRE, WATER & BUILDING	POT2
10/09/2023	O-324	PAULSEN, JACK	SECM
10/09/2023	O-328.	IMT2-NW-TEAM13-GALES	ICT2 SSEC
10/09/2023	S-439	WILDLAND SECURITY	

DMOB LIST FOR 10/10/2023

DINNER-BRICE CREEK-GRIZZLY FIRES			
10/10/2023	No resources demobing		
CHILCOOT-RIDGE FIRES			
10/10/2023	O-348	RHOTEN, BRIAN	REAF

Extensions and Crew Swaps – NW 13

This is the Team Standard Operating procedure based on national policy

- **Resources may be demobed, regardless of crew status, if it is no longer needed.**
- Contract Crews are generally not extended unless replacement resources are scarce. Crews may swap crew members if needed by utilizing the crew swap form at the QR code below.
- Resources ordered on 'O' numbers cannot swap crew members (exception - some medical resources). These resources can extend depending on availability and needs of the incident. See Plans for a resource extension form.

Contracted Fireline Equipment Crew Swap Procedure

- Contract equipment may stay on the incident until it is no longer needed, a maximum dollar amount is reached, or replacement crew members cannot be provided.
- It is the responsibility of the contract owner to track their crew members and ensure they maintain proper work/rest ratios. The IMT assumes contracted equipment will swap crew members as needed to provide adequate rest for their employees.
- Non-fireline equipment personnel (like hand wash stations) are not tracked other than a current onsite contact.
- If replacement crew members cannot be provided, this must be documented on an ICS-213 and provided to Operations and Plans at least 72 hours prior to the 14th workday. The resource will be demobed after 14 shifts OR an extension form may be completed based on operational need, see Plans for this form.
- Crew swaps MUST be tracked through the below QR code form as soon as known, no later than 1800 on the day prior to the swap. If the new crew member is the primary operator and any information in the IAP is incorrect, correct information MUST be provided to the Division Supervisor immediately following the operational briefing/division breakout.
- We prefer all members of a resource swap at once if possible. The crew swap form will need to be filled out for each individual crew member.
- Replacement workers must provide proof of current annual training upon request.

QR code link to Umpqua Fires FTP page, then find button named **Crew Swap Form**



Please contact Plans after the briefing, at their office, or at Check-in if you have questions or wish to understand how your last workday/demob date was determined.



Resource Advisor Message

Objectives – One objective of the fire suppression is to repair areas disturbed by fire suppression activities into a condition that does not negatively affect natural and cultural resources and will not create excessive erosion on the landscape. Without compromising public and firefighter safety:

- Reduce the potential for soil erosion and sedimentation.
- Repair roads and drainage structures to a functioning condition.
- Avoid driving any kind of machinery on severely burned soils.
- Reduce the visual impacts of fire line as well other suppression activities when feasible.
- Avoid dragging large trees across soils, especially severely burned soils.
- Avoid driving machinery on moist soils.
- Avoid bucking up large, downed wood. Leave logs in as long of piece as possible.
- **Leave no trace.** Pack out trash if cans are overflowing, avoid leaving trash next to overflowing trash cans.

General Road Rules

Roads can be damaged easily during rainfall events. Signs of road distress include the following:

- Surface deformities such as: potholes, soft spots, ruts, etc. greater than 2" deep
- Pooling water, indicating drainage not functioning as designed.
- Slurry or conditions that causes loss of traction.
- Utilize 4-wheel drive on gravel roads in order to reduce impacts to the road surface.

Roads with signs of distress should not be driven on. Work with REAFs to implement erosion control measures.

General Water Bar Specifications:

- Facing the slope, standing at the bottom of a repair feature or existing water bar, the next water bar constructed should be placed at eye level.
- Water bars should be constructed into compacted soil and not constructed by simply pushing up loose soil and duff.
- Water bars should direct runoff away from the burned area where possible (into the green).
- Water bars should have out-sloped trenching at 30-45 ° from perpendicular to the fire line.
- Assure that the downslope end of the water bar is open and has adequate length to allow free flow of water off the line.
- Logs can be incorporated into water bars if they are embedded or anchored in a trench.
- Slash can be placed below outlet of water bar to help slow runoff and help collect sediment.



Do you or the public need to reach the PIOs?

Phone: (541) 900-5862

Emails:

Brice Creek/Dinner/Grizzly: 2023.dinner@firenet.gov

Chilcoot/Ridge: 2023.chilcoot@firenet.gov

Please email us your photos! (And don't forget your
PPE 😊)



Chilcoot Fire Information



Dinner, Brice Creek and Grizzly Fires Information

Mail

Address your mail to:

C/O (Chilcoot Fire, Your Name, Crew/RO Number, Phone Number)

North Umpqua Ranger District

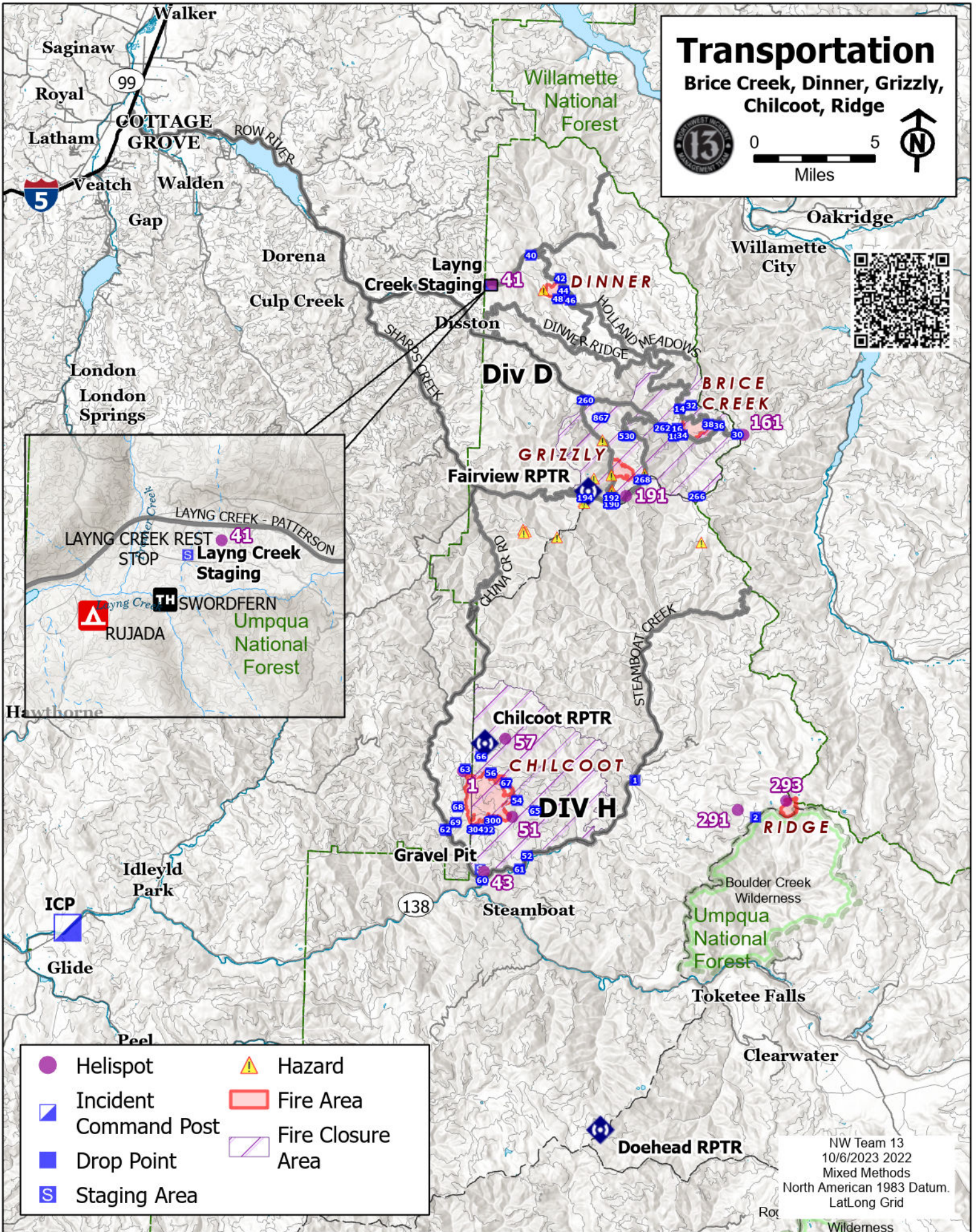
18782 North Umpqua Highway

Glide, OR 97443

Pick-up: You will need to pick up your mail at the Umpqua Ranger District



**Call or visit our trailer at ICP if you've lost
or found something!**



RETURN TO PLANNING OPS BY 1300 HRS
Via radio (preferred method), text, email, photo, or cell phone
Project for Next Operational Period and 48 & 72 hours in the Future

DIVISION PLANNING SHEET		Division/ Group	Name Of Division /Group Supervisor		
Next Operational Period Date:					
Operations and Resource unit text number and e-mail					
<input type="checkbox"/> - Roll over assigned Resources <input type="checkbox"/> -Excess resources <input type="checkbox"/> -Correction to 204					
E or C number	Strike Team/Task Force/ Resource Designator	Leader	Number Persons	Comments	
<input type="checkbox"/> -Request for additional Resources					
Number	Type	Resource Kind	Number	Type	Resource Kind
Operational Projection/Resource Needs/Excess Resources (48 hours):					
Operational Projection/Resource Needs/Excess Resources (72 hours):					
Comments					

ACTIVITY LOG (ICS 214)

1. Incident Name:	2. Operational Period: Date From: _____ Date To: _____	
	Time From: _____ Time To: _____	
3. Name:	4. ICS Position:	5. Home Agency (and Unit):
6. Resources Assigned:		
Name	ICS Position	Home Agency (and Unit)
7. Activity Log:		
Date/Time	Notable Activities	
8. Prepared by: Name: _____	Position/Title: _____	Signature: _____
ICS 214, Page 1	Date/Time: _____	

MEDICAL PLAN (206 WF)

1. Incident/Project Name				2. Operational Period					
Dinner/Grizzly/Brice Creek/Chilcoot/Ridge				Date/Time: 10/08 0700 – 10/08 1800					
3. Ambulance Services									
Name	Complete Address	Phone	Advanced Life Support (ALS)						
			Yes	No					
Umpqua Valley Ambulance	Roseburg, OR	911	X						
Glide Rural Fire Protection	Glide, OR	911	X						
4. Air Ambulance Services									
Name	Phone	Type of Aircraft & Capability							
LIFE FLIGHT	1-800-232-0911 / 911	Critical Care Team of Paramedic and RN 24 hr, 100'x100' LZ.							
REACH	1-800-338-4045	Critical Care Team of Paramedic and RN 24 hr, 100'x100' LZ.							
Teton Short Haul	Chilcoot Communications	Short Haul, Daytime-Cape Blanco, OR							
Wenatchee Short Haul	Chilcoot Communications	Short Haul, Daytime-Sunriver, OR							
5. Hospitals									
Name	Degrees Decimal Minutes		Travel Time From ICP		Phone	Helipad		Level of Care	
			Air	Gnd.		Yes	No		
Mercy Health Hospital 2700 NW Stewart Pkwy Roseburg, OR 97471	Lat:	43° 14.567 N	40 Min	2 Hrs	541-673-0611	X		Level III Trauma	
	Long:	123° 21.983 W							
Sacred Heart Hospital 3333 Riverbend Dr. Springfield, OR 97477	Lat:	44° 04.876 N	1 Hr	3 Hrs	541-222-6931	X		Level II Trauma	
	Long:	123° 01.588 W							
Legacy Emanuel Hospital (Portland, OR)	Lat:	45° 32.668' N	1.5 Hrs	5 Hrs	503-413-4121	X		Level I Trauma Burn Center	
	Long:	122° 40.293' W							
ICP (Glide Ranger Station)	EMS Responders & Capability:			James Brown MEDL 360-775-5413					
	Equipment Available on Scene:			ALS Kit, LP15 defib, O2, OTC meds					
	Medical Emergency Channel:			Chilcoot Communications Plan					
	ETA for Ambulance to Scene:								
	Air:			25 Min					
	Ground:			30 Min					
	Approved Heli-Spot:								
DIV D	EMS Responders & Capability:			REMS 4 Brendon Church 602-370-3778 ALS/UTV/Rope Rescue					
	Equipment Available on Scene:			ALS Kit, defib, O2					
	Medical Emergency Channel:			Chilcoot Communications Plan					
	ETA for Ambulance to Scene:								
	Air:			50 min					
	Ground:			Brice Fire to Cottage Grove 1.5 Hrs					
	Approved Heli-Spot:								
DIV H	EMS Responders & Capability:			AMBO 55 Lance Puig 972-689-3348 ALS Ambulance MED MOD 1 Marcas Garcia 925-321-5013 ALS/UTV					
	Equipment Available on Scene:			ALS Kit, defib, O2, OTC meds					
	Medical Emergency Channel:			Chilcoot Communications Plan					
	ETA for Ambulance to Scene:								
	Air:			50 min					
	Ground:			Chilcoot Fire to Roseburg 1.5 Hrs					
	Approved Heli-Spot:								
Prepared By (Medical Unit Leader)			Date		Reviewed By (Safety Officer)			Date	
Ben Meacham MEDL			10/07/2023		Ray Hershey SOF2			10/07/2023	
Signature: <i>Ben Meacham</i>					Signature: <i>Ray Hershey</i>				

MEDICAL PLAN (ICS 206 WF)

Controlled Unclassified Information//Basic

Medical Incident Report

FOR A NON-EMERGENCY INCIDENT, WORK THROUGH CHAIN OF COMMAND TO REPORT AND TRANSPORT INJURED PERSONNEL AS NECESSARY.

FOR A MEDICAL EMERGENCY: IDENTIFY ON-SCENE INCIDENT COMMANDER BY NAME AND POSITION AND ANNOUNCE "MEDICAL EMERGENCY" TO INITIATE RESPONSE FROM IMT COMMUNICATIONS/DISPATCH.

Use the following items to communicate situation to communications/dispatch.

1. CONTACT COMMUNICATIONS / DISPATCH (Verify correct frequency prior to starting report)

Ex: "Communications, Div. Alpha. Stand-by for Emergency Traffic."

2. INCIDENT STATUS: Provide incident summary (including number of patients) and command structure.

Ex: "Communications, I have a Red priority patient, unconscious, struck by a falling tree. Requesting air ambulance to Forest Road 1 at (Lat./Long.) This will be the Trout Meadow Medical, IC is TFLD Jones. EMT Smith is providing medical care."

Severity of Emergency / Transport Priority	<input type="checkbox"/> RED / PRIORITY 1 Life or limb threatening injury or illness. Evacuation need is IMMEDIATE <i>Ex: Unconscious, difficulty breathing, bleeding severely, 2° – 3° burns more than 4 palm sizes, heat stroke, disoriented.</i> <input type="checkbox"/> YELLOW / PRIORITY 2 Serious Injury or illness. Evacuation may be DELAYED if necessary. <i>Ex: Significant trauma, unable to walk, 2° – 3° burns not more than 1-3 palm sizes.</i> <input type="checkbox"/> GREEN / PRIORITY 3 Minor Injury or illness. Non-Emergency transport <i>Ex: Sprains, strains, minor heat-related illness.</i>	
Nature of Injury or Illness & Mechanism of Injury		<i>Brief Summary of Injury or Illness (Ex: Unconscious, Struck by Falling Tree)</i>
Evacuation Request		<i>Air Ambulance / Short Haul/Hoist Ground Ambulance / Other</i>
Patient Location		<i>Descriptive Location & Lat. / Long. (WGS84)</i>
Incident Name		<i>Geographic Name + Medical (Ex: Trout Meadow Medical)</i>
On-Scene Incident Commander		<i>Name of on-scene IC of Incident within an Incident (Ex: TFLD Jones)</i>
Patient Care		<i>Name of Care Provider (Ex: EMT Smith)</i>

3. INITIAL PATIENT ASSESSMENT: Complete this section for each patient as applicable (start with the most severe patient)

Patient Assessment: See IRPG PAGE 106

Treatment:

4. EVACUATION PLAN:

Evacuation Location (if different): (Descriptive Location (drop point, intersection, etc.) or Lat. / Long.) Patient's ETA to Evacuation Location:

Helispot / Extraction Site Size and Hazards:

5. ADDITIONAL RESOURCES / EQUIPMENT NEEDS:

Example: Paramedic/EMT, crews, immobilization devices, AED, oxygen, trauma bag, IV/fluid(s), splints, rope rescue, wheeled litter, HAZMAT, extrication

6. COMMUNICATIONS: Identify State Air/Ground EMS Frequencies and Hospital Contacts as applicable

Function	Channel Name/Number	Receive (RX)	Tone/NAC *	Transmit (TX)	Tone/NAC *
COMMAND					
AIR-TO-GRND					
TACTICAL					

7. CONTINGENCY: Considerations: If primary options fail, what actions can be implemented in conjunction with primary evacuation method? Be thinking ahead..

8. ADDITIONAL INFORMATION: Updates/Changes, etc.

REMEMBER: Confirm ETAs of resources ordered. Act according to your level of training. Be Alert. Keep Calm. Think Clearly. Act Decisively.