



## FINANCE MESSAGE

**Finance Email:** [2023.chilcoot.finance@firenet.gov](mailto:2023.chilcoot.finance@firenet.gov)

**Finance Phone:** 808-298-1386

**This incident requires electronic documentation.** Please email your time to the Finance email address daily. Scanned PDF documents are preferred. Don't forget to add your resource order number in the upper left hand corner of your time.

### Required Documents

Overhead, Agency Crews & Cooperators	Contract Resources
<b>Finance docs needed:</b> Resource Order, Manifest, Cooperative Agreement, Casual Hire Form w/ECI# (as applicable)	<b>Finance docs needed:</b> Resource Order, Manifest, Full Contract/Agreement, Certifications ( <i>if required</i> ) Pre-Inspection
<b>Daily:</b> CTRs, Shift Tickets	<b>Daily:</b> CTRs, Shift Tickets, receipts (claims, etc.) <b>NOTE: Document travel times and odometer readings.</b>
<b>Demob:</b> Signed OF-288; Signed OF-286	<b>Demob:</b> Contractor Evaluations, Shift Tickets, receipt(s) for Addition/Deductions, Post-Inspection, Signed OF-286
<b>Additional Incident Information:</b>  See cover page of the IAP for incident numbers and financial codes.	<b>Please call finance regarding issues with your time:</b> E-19 Kent Corp E-214 Bob Murray Logging O-18 Toms Timber E-231 Mark Jones Trucking

**For your entertainment...Where do frogs deposit their money? In a river bank!**

<b>INCIDENT OBJECTIVES</b>	<b>1. Incident Name</b> Chilcoot, Grizzly, Ridge, Dinner, Brice Creek	<b>2. Date</b> October 08, 2023	<b>3. Time</b> 2000
----------------------------	---	------------------------------------	------------------------

**4. Operational Period: 10/09-10/2023 0630-1930**

**5. General Objectives:**  
Implement a FULL suppression strategy for Chilcoot, Grizzly, Brice Creek, Dinner and Ridge fires:

- Provide for firefighter and public safety through hazard identification and application of a shared risk management process.
- Coordinate public information to provide timely updates to agency partners, cooperators and the public.
- Coordinate suppression and repair activities with READs to minimize impacts on the landscape.
- Effectively manage and track costs for all five incidents.
- Coordinate with agency leadership/administrators to ensure effective and efficient management of firefighting resources.

Chilcoot, Grizzly:

- Chilcoot: provide full incident containment through suppression actions. Grizzly: monitor and evaluate conditions that could lead to fire growth, identify and validate strategic indirect lines.
- Coordinate with ODF-DFFPA, as needed, for changing conditions specific to fire progression potentially impacting private lands.
- Repair indirect lines not currently identified as potential containment features, identify primary line repair options as applicable.
- Evaluate a PACE model for the Grizzly fire, develop near-term and long-term modeling based on future potential.
- Work with partner/stakeholders (Sierra Pacific) to access, manage private lands within fire perimeter.

Dinner, Ridge, Brice Creek:

- Achieve full containment with suppression actions and ensure adequate mop-up is conducted to reduce the threat of escape.
- Implement full repair on all indirect line construction.
- Evaluate repair needs for primary line construction.
- Monitor access routes "Ingress/Egress" and minimize impact to road systems.
- Backhaul all equipment as applicable.

**5a. Incident Requirements**

- Priority values are firefighter and public safety, critical infrastructure, private land and natural resources.
- Provide Agency Administrator updates and briefings on incident status as conditions evolve.
- Firefighting operations will implement tactics that offer the highest probability of success to minimize impacts to the landscape and minimize unnecessary exposure to firefighters.

**5b. Leaders Intent**

- **Safety:** Firefighter, public and aviation safety will be addressed through hazard/exposure risk mitigation processes.
- **Risk Management:** Utilize an aligned risk assessment process that mitigates exposure to firefighters through evaluation of conditions during the duration of the incident.
- **Communication:** Keep Agency Administrators and firefighters informed of strategic actions, accomplishments and challenges.
- **Operations:** Make informed strategic/tactical decisions suppressing the fire in the right geographic locations with the appropriate resources having the highest probability of success.
- **Stakeholders:** Collaborate with local partners, officials and landowners to provide situational updates pertinent to the fire.
- **Logistics:** Provide support ensuring food, water and shelter for incident responders.
- **Human Resources:** Ensure that all incident personnel are treated with dignity and respect, while having zero tolerance for harassment, alcohol, or illegal drug use.
- **Public Information:** Provide timely and accurate information through media outlets, trap lines, briefings, community meetings and social platforms.
- **Finance:** Monitor and communicate incident cost associated with meeting incident objectives.
- **Planning:** Provide incident documentation, resource tracking and accurate data management.

**6. Weather Forecast & General Safety Message for Period – See Attached**

<b>7. Attachments (mark if attached)</b>					
<input checked="" type="checkbox"/>	Organization List - ICS 203	<input checked="" type="checkbox"/>	Weather Forecast	<input checked="" type="checkbox"/>	Safety Message
<input checked="" type="checkbox"/>	Div. Assignment Lists - ICS204	<input checked="" type="checkbox"/>	Fire Behavior Forecast	<input type="checkbox"/>	Medical Emergency Com Plan
<input checked="" type="checkbox"/>	Communicatons Plan - ICS 205	<input type="checkbox"/>	Incident Map	<input type="checkbox"/>	
<input checked="" type="checkbox"/>	Medical Plan - ICS 206	<input type="checkbox"/>	Air Operations - ICS 220	<input type="checkbox"/>	

<b>9. Prepared by</b> Aileen Nichols	<b>9. Approved by (Incident Commander)</b> Ken Powell <i>Ken Powell</i>
---	--



Chilcoot Fires – Weather 5 Day Weather Outlook – October 9-13

Discussion: High clouds arrive late Sunday night ahead of a cold front. The front is anticipated to move through Monday with rain. A cool and wet active pattern will follow with periods of showers through Wednesday evening. Around an inch of rain is expected in the 24 hours from Monday afternoon through Tuesday afternoon, and another half inch to an inch in the 30 hours from the start of Tuesday evening through the end of Wednesday evening. A drying trend begins on Thursday but will not be as pronounced as the last bout of great weather.

National Weather Service Dashboard:

23 miles SSW of Oakridge, OR (Elevation: 2995 ft)

[Download Weekly Summary as PNG](#)

<b>Oakridge, OR Weekly Summary</b>	<b>Sat Oct 7</b>	<b>Sun Oct 8</b>	<b>Mon Oct 9</b>	<b>Tue Oct 10</b>	<b>Wed Oct 11</b>	<b>Thu Oct 12</b>	<b>Fri Oct 13</b>	<b>Sat Oct 14</b>
<b>Max Temp, °F</b>	81	77	59	50	48	63	63	59
<b>Min Temp, °F</b>	61	55	50	46	43	40	46	49
<b>Max RH, %</b>	67	72	92	93	96	90	66	77
<b>Min RH, %</b>	33	27	49	84	82	44	44	58
<b>Max Dewpoint, °F</b>	51	50	53	47	45	42	45	46
<b>Min Dewpoint, °F</b>	46	39	39	44	40	36	35	39
<b>Max Wind, mph</b>	9	13	13	20	14	9	8	8
<b>Min Wind, mph</b>	3	2	6	6	6	6	6	6
<b>Max Wind Gust, time/dir.</b>	7 PM ↘	3 PM ↗	8 AM ↗	2 PM ↗	12 AM ↗	8 PM ↖	12 AM ↖	2 PM ↗
<b>Max Wind Gust, mph</b>	13	18	18	29	21	14	13	13
<b>Min Wind Gust, mph</b>	6	5	7	8	9	9	9	7
<b>Max Cloud Cover, %</b>	5	54	97	100	96	59	74	82
<b>Min Cloud Cover, %</b>	1	0	54	90	34	23	51	64
<b>Max Prob. of Precip., %</b>	2	14	95	100	93	11	27	41
<b>Max Haines</b>	3	4	4	4	2	4	4	
<b>Max LAL</b>	1	1	1	2	2	1	1	1

Spot weather forecasts available through National Weather Service @: <https://www.weather.gov/spot/>

## Fire Behavior Forecast #40 – 5 day Extended

<b>Incident:</b>	<b>Number:</b>	<b>TYPE OF FIRE:</b> Wildfire
Grizzly	OR-UPF-000341	<b>DATE/TIME ISSUED:</b> 10/8/23 1900
Chilcoot	OR-UPF-000345	<b>OPERATIONAL PERIOD:</b> 10/9-14/2023
Ridge	OR-UPF-000346	<b>FBAN:</b> Dean Warner
Dinner	OR-UPF-000357	<b>Signed:</b>
Brice Creek	OR-UPF-000359	

**Weather Summary** - See 5 day weather outlook: 3 days of rain.

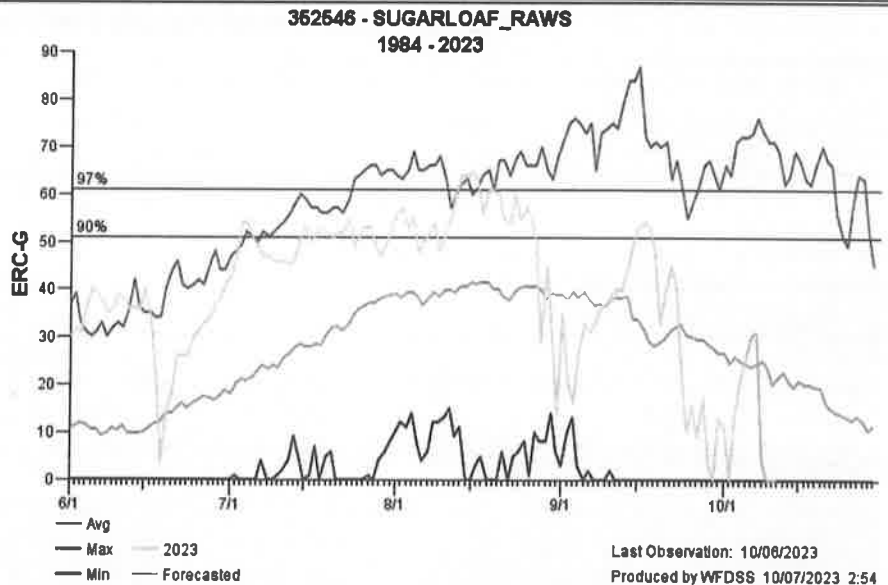
**Fuels:** Fire areas are primarily composed of *Timber Litter (TL5)*, and *Timber Understory (TU5)* with *moss/lichen present in most stands*. Mature conifer stands with western hemlock and Douglas-fir, often have heavy surface fuel loading. 30 to 50+ year old second growth conifer stands contain needle litter and some down woody debris. Brush and reprod are present in open stands of mature timber.

**OUTPUTS:**      Expected Fine Dead Fuel Moisture: 9-20%      POI: 10- 20%

Fire Behavior: Minimal Max. spot distance: ¼ mile LAL: 1	<b>Fuel/Type Model</b>	<b>Maximum ROS</b>	<b>Maximum Flame Length</b>
	Timber Litter/TL5	3 ch/hr	2 ft.
	Timber Understory/TU5	5 ch/hr	5 ft.

**Expected Fire Behavior is Based on the Warmest, Driest, Windiest Conditions Forecasted.**

**Five day outlook:** The rain beginning Monday will force ERC levels back to zero and will only rebound to the 70<sup>th</sup> percentile if prolonged ideal drying conditions return.



### Air Operations

Inversion and cloud cover will hamper any air operations.

### Safety:

Remember to stay informed on weather conditions and adjust actions as necessary to meet mission objectives.

DIVISION ASSIGNMENT LIST			1. Branch		2. Division <b>Brice Creek Page 1</b>	
3. Incident Name <b>Umpqua Fires</b>			4. Operational Period Date: <b>10/09-10/2023</b> Time: <b>0630-1930</b>			
5. Operations Personnel						
Operations Chief		<b>Jeremiah Coke</b>		Division Supervisor		<b>Eric Bader</b>
Safety Officer		<b>Andy Murrin</b>		Air Attack		
6. Resources Assigned this Period						
Strike Team/Task Force/Resource Designator	Leader	# Persons	LWD	Drop Off PT./Time	Pick Up PT./Time	
1 O-362 TFLD	Robert Clark Jr	1	10/14	Cottage Grove/0630	Cottage Grove/1930	
2 O-371 TFLD	Matthew Roby	1	10/12	Cottage Grove/0630	Cottage Grove/1930	
3						
4 O-355 HEQB	Matthew Jones	1	10/11	Cottage Grove/0630	Cottage Grove/1930	
5 O-382 HEQB - t	Garret Watson	1	10/12	Cottage Grove/0630	Cottage Grove/1930	
6						
7 O-25 FELB	Christopher Keough	1	10/23	Cottage Grove/0630	Cottage Grove/1930	
8 O-365 FELB - t	Daniel Horwath	1	10/12	Cottage Grove/0630	Cottage Grove/1930	
9 O-18 FMOD Toms Timber	Tom Conway	2	10/10	Cottage Grove/0630	Cottage Grove/1930	
10 O-20 FMOD A and C Cutting	Skyler Gardner	2	10/20	Cottage Grove/0630	Cottage Grove/1930	
11 O-21 FMOD C&K Wildland	Kevin Schuyler	2	10/20	Cottage Grove/0630	Cottage Grove/1930	
12 O-22 FMOD B&M Wildfire	Nick Browning	2	10/20	Cottage Grove/0630	Cottage Grove/1930	
13						
14 O-372 WFM2 Metolius	Stephen Hanson	11	10/12	Cottage Grove/0630	Cottage Grove/1930	
15						
16 E-28 FEL1 Inland Timber Co	Mikeal Stephenson	2	10/20	Cottage Grove/0630	Cottage Grove/1930	
17						
18 E-30 SKD1 Mark Jones Trucking	Zakkary Dewbre	2	10/20	Cottage Grove/0630	Cottage Grove/1930	
19	Personnel Count					
7. Control Operations: <b>Task:</b> Patrol Grizzly fire and take suppression actions as appropriate by utilizing ground resources and aircraft as necessary. Continue chipping and dozer line repair on the Grizzly fire. Utilize Field Maps to document suppression repair that is ready for READ approval. Continue hand felling hazard trees on Division D Brice Creek. <b>Purpose:</b> Prevent fire from impacting values at risk, including communities to the west, commercial timberlands and T&E habitat. Provide for firefighter and public safety. Reduce the risk to responders and public from hazard trees. <b>End state:</b> Achieve full containment on the Dinner and Brice Creek fires. Monitor the Grizzly fire and take suppression action to ensure that it stays within its current footprint. Ensure suppression repair meets turnback standards and backhaul non-essential supplies. Meet Umpqua National Forest Hazard Tree Abatement Plan.						
8. Special Instructions: <b>Active Helispots Identified on Division Map:</b> <b>Dinner</b> H-41 43°42.493'N x 122°44.287'W <b>Brice Creek</b> H-161 43°37.352'N x 122°31.593'W <b>Grizzly</b> H-191 43°35.017'N x 122°37.313'W						
9. Division/Group Communication Summary						
<b>See Communications Plan</b>						
Prepared by (Resource Unit Ldr) <i>Meredith Butcher</i>		Approved by (Planning Sect. Ch.) <i>Aileen Nichols</i>		Date <b>10/08/2023</b>	Time <b>1600</b>	

DIVISION ASSIGNMENT LIST			1. Branch		2. Division <b>Brice Creek Page 2</b>	
3. Incident Name <b>Umpqua Fires</b>			4. Operational Period Date: <b>10/09-10/2023</b> Time: <b>0630-1930</b>			
5. Operations Personnel						
Operations Chief		<b>Jeremiah Coke</b>		Division Supervisor		<b>Eric Bader</b>
Safety Officer		<b>Andy Murrin</b>		Air Attack		
6. Resources Assigned this Period						
Strike Team/Task Force/Resource Designator	Leader	# Persons	LWD	Drop Off PT./Time	Pick Up PT./Time	
1 E-33 FORW Miller Timber	Evan Tontini	2	10/21	Cottage Grove/0630	Cottage Grove/1730	
2 E-35 FORW Miller Timber	Robert Mann	2	10/21	Cottage Grove/0630	Cottage Grove/1730	
3						
4 E-32 LOGL Rose Logging	Tod Phibbs	2	10/20	Cottage Grove/0630	Cottage Grove/1730	
5 E-230 LOGL Pacific Ridgeline	Brett Miller	2	10/12	Cottage Grove/0630	Cottage Grove/1730	
6						
7 E-29 LOGP Dean Innovations	Steven Lazott	2	10/20	Cottage Grove/0630	Cottage Grove/1730	
8 E-35 LOGP Miller Timber	Josiah Fox	2	10/21	Cottage Grove/0630	Cottage Grove/1730	
9						
10 E-234 CHSL Pacific Ridgeline	Zach Jafarzadeh	2	10/18	Cottage Grove/0630	Cottage Grove/1730	
11						
12 O-129 READ	Jed Hancock	1	10/11	Roseburg/0630	Roseburg/1930	
13 O-238 REAF	Chris McGrath	1	10/11	Roseburg/0630	Roseburg/1930	
14						
15 O-360 REMS 4	Brendon Church	4	10/19	Cottage Grove/0630	Cottage Grove/1730	
16						
17						
18						
7. Control Operations: <b>Task:</b> Patrol Grizzly fire and take suppression actions as appropriate by utilizing ground resources and aircraft as necessary. Continue chipping and dozer line repair on the Grizzly fire. Utilize Field Maps to document suppression repair that is ready for READ approval. Continue hand felling hazard trees on Division D Brice Creek. <b>Purpose:</b> Prevent fire from impacting values at risk, including communities to the west, commercial timberlands and T&E habitat. Provide for firefighter and public safety. Reduce the risk to responders and public from hazard trees. <b>End state:</b> Achieve full containment on the Dinner and Brice Creek fires. Monitor the Grizzly fire and take suppression action to ensure that it stays within its current footprint. Ensure suppression repair meets turnback standards and backhaul non-essential supplies. Meet Umpqua National Forest Hazard Tree Abatement Plan.						
8. Special Instructions: <b>Active Helispots Identified on Division Map:</b> <b>H-41 Dinner</b> 43°42.493'N x 122°44.287'W <b>H-161 Brice Creek</b> 43°37.352'N x 122°31.593'W <b>H-191 Grizzly</b> 43°35.017'N x 122°37.313'W						
9. Division/Group Communication Summary						
<b>See Communications Plan</b>						
Prepared by (Resource Unit Ldr) <i>Meredith Butcher</i>			Approved by (Planning Sect. Ch.) <i>Aileen Nichols</i>		Date <b>10/08/2023</b>	Time <b>1600</b>



DIVISION ASSIGNMENT LIST			1. Branch		2. Division <b>Chilcoot Page 1</b>	
3. Incident Name <b>Umpqua Fires</b>			4. Operational Period Date: <b>10/09-10/2023</b> Time: <b>0630-1930</b>			
5. Operations Personnel						
Operations Chief		<b>Jeremiah Coke</b>		Division Supervisor		<b>Mitchell Stiles</b>
Safety Officer		<b>Andy Murrin</b>		Air Attack		
6. Resources Assigned this Period						
Strike Team/Task Force/Resource Designator	Leader	# Persons	LWD	Drop Off PT./Time	Pick Up PT./Time	
1 O-353 HEQB	Anthony Weidner	1	10/12	Roseburg/0630	Roseburg/1930	
2 O-354 HEQB	Steven Lozano	1	10/13	Roseburg/0630	Roseburg/1930	
3 O-356 HEQB - t	Colin Thompson	1	10/12	Roseburg/0630	Roseburg/1930	
4 O-357 HEQB - t	Kyle Murphy	1	10/12	Roseburg/0630	Roseburg/1930	
5 O-358 HEQB - t	Sterling Smith	1	10/12	Roseburg/0630	Roseburg/1930	
6 C-57 CR2I Mt Baker IA	Erik Usher	24	10/12	Roseburg/0630	Roseburg/1930	
7 C-58 CRW2 UMF Vet Crew	Andrew Goshgarian	18	10/10	Roseburg/0630	Roseburg/1930	
8 O-406 FMOD Timber Tippers #1	Gabe Raddekopp	2	10/20	Roseburg/0630	Roseburg/1930	
9 O-407 FMOD Timber Tippers #4	Jerald Floyd	2	10/20	Roseburg/0630	Roseburg/1930	
10						
11 E-239 SKD1 Mark Jones	Beau Morrell	2	10/20	Roseburg/0630	Roseburg/1930	
12						
13 E-240 LOGL Rose Logging	Jeremy Deyroot	2	10/20	Roseburg/0630	Roseburg/1930	
14 E-241 LOGL Rose Logging	Justin Rainwater	2	10/20	Roseburg/0630	Roseburg/1930	
15						
16 E-242 FORW Stafford Reload	Noah Wible	2	10/20	Roseburg/0630	Roseburg/1930	
17 E-237 FEL1 S5 Land Services		2	10/22	Roseburg/0630	Roseburg/1930	
18 E-114 EXC2 Scott Marshall	Cindy Marshall	2	10/20	Roseburg/0630	Roseburg/1930	
19 E-231 EXC2 Mark Jones	Bill Delaney	2	10/30	Roseburg/0630	Roseburg/1930	
7. Control Operations: <b>Task:</b> Continue suppression repair on the Chilcoot fire. Utilize Field Maps to document suppression repair that is ready for READ approval. <b>Purpose:</b> Prevent fire from impacting values at risk, including communities, commercial and T&E habitat. Provide for firefighter and public safety. <b>End state:</b> Achieve full containment on the Chilcoot and Ridge fires. Suppression repair meets turnback standards and non-essential supplies have been back hauled.						
8. Special Instructions: <b>Active Helispots identified on Division Maps:</b> <b>Chilcoot</b> <b>H-57</b> 43°26.132'N x 122°42.886'W, <b>H-51</b> 43°23.330'N x 122°42.411'W <b>H-1</b> 43°24.915'N x 122°44.923'W, <b>H-43</b> 43°21.324'N x 122°43.723'W  <b>Ridge</b> <b>H-291</b> 43°23.840'N x 122°31.291'W						
9. Division/Group Communication Summary						
<b>See Communications Plan</b>						
Prepared by (Resource Unit Ldr) <i>Meredith Butcher</i>			Approved by (Planning Sect. Ch.) <i>Aileen Nichols</i>		Date <b>10/08/2023</b>	Time <b>1600</b>

DIVISION ASSIGNMENT LIST			1. Branch		2. Division <b>Chilcoot Page 2</b>	
3. Incident Name <b>Umpqua Fires</b>			4. Operational Period Date: <b>10/09-10/2023</b> Time: <b>0630-1930</b>			
5. Operations Personnel						
Operations Chief		<b>Jeremiah Coke</b>		Division Supervisor		<b>Mitchell Stiles</b>
Safety Officer		<b>Andy Murrin</b>		Air Attack		
6. Resources Assigned this Period						
	Strike Team/Task Force/Resource Designator	Leader	# Persons	LWD	Drop Off PT./Time	Pick Up PT./Time
1	<b>E-211 CHSL Pacific Ridgeline</b>	<b>Joseph Schlabach</b>	<b>2</b>	<b>10/12</b>	<b>Roseburg/0630</b>	<b>Roseburg/1930</b>
2	<b>E-233 CHSL Lane Forest</b>	<b>George Turney</b>	<b>2</b>	<b>10/20</b>	<b>Roseburg/0630</b>	<b>Roseburg/1930</b>
3						
4	<b>E-227 Dump 10 Yard JLC</b>	<b>Danny Amon</b>	<b>1</b>	<b>10/12</b>	<b>Roseburg/0630</b>	<b>Roseburg/1930</b>
5	<b>E-228 Dump 10 Yard JLC</b>	<b>Mark Angell</b>	<b>1</b>	<b>10/12</b>	<b>Roseburg/0630</b>	<b>Roseburg/1930</b>
6	<b>E-235 Dump 10 Yard Pac Ridgeline</b>	<b>Trent Jones</b>	<b>1</b>	<b>10/16</b>	<b>Roseburg/0630</b>	<b>Roseburg/1930</b>
7	<b>E-236 Dump 10 Yard Lee Roy Belloir</b>	<b>Ross Belloir</b>	<b>1</b>	<b>10/16</b>	<b>Roseburg/0630</b>	<b>Roseburg/1930</b>
8						
9	<b>E-229 T2 Backhoe JLC</b>	<b>Coby Patterson</b>	<b>1</b>	<b>10/12</b>	<b>Roseburg/0630</b>	<b>Roseburg/1930</b>
10						
11	<b>O-129 READ</b>	<b>Jed Hancock</b>	<b>1</b>	<b>10/11</b>	<b>Roseburg/0630</b>	<b>Roseburg/1930</b>
12	<b>O-352 READ - t</b>	<b>Luis Palacios</b>	<b>1</b>	<b>10/11</b>	<b>Roseburg/0630</b>	<b>Roseburg/1930</b>
13	<b>O-238 REAF</b>	<b>Chirs McGrath</b>	<b>1</b>	<b>10/14</b>	<b>Roseburg/0630</b>	<b>Roseburg/1930</b>
14	<b>O-386 REAF</b>	<b>Cynthia Armentrout</b>	<b>1</b>	<b>10/14</b>	<b>Roseburg/0630</b>	<b>Roseburg/1930</b>
15	<b>O-385 REAF - t</b>	<b>Natalie Mills</b>	<b>1</b>	<b>10/16</b>	<b>Roseburg/0630</b>	<b>Roseburg/1930</b>
16	<b>O-381 TSHP</b>	<b>Dan Smith</b>	<b>1</b>	<b>10/20</b>	<b>Roseburg/0630</b>	<b>Roseburg/1930</b>
17						
18	<b>E-142 Med MOD1 Cardinal Medical Solutions</b>	<b>Marcas Garcia</b>	<b>2</b>	<b>10/17</b>	<b>Roseburg/0630</b>	<b>Roseburg/1930</b>
19	<b>E-193 AMBO 55 Front Line</b>	<b>Ben Puig</b>	<b>2</b>	<b>10/12</b>	<b>Roseburg/0630</b>	<b>Roseburg/1930</b>
7. Control Operations: <b>Task:</b> Continue suppression repair on the Chilcoot fire. Utilize Field Maps to document suppression repair that is ready for READ approval. <b>Purpose:</b> Prevent fire from impacting values at risk, including communities, commercial and T&E habitat. Provide for firefighter and public safety. <b>End state:</b> Achieve full containment on the Chilcoot and Ridge fires. Suppression repair meets turnback standards and non-essential supplies have been back hauled.						
8. Special Instructions: <b>Active Helispots identified on Division Maps:</b> <b>Chilcoot</b> <b>H-57</b> 43°26.132'N x 122°42.886'W, <b>H-51</b> 43°23.330'N x 122°42.411'W <b>H-1</b> 43°24.915'N x 122°44.923'W, <b>H-43</b> 43°21.324'N x 122°43.723'W  <b>Ridge</b> <b>H-291</b> 43°23.840'N x 122°31.291'W						
9. Division/Group Communication Summary						
<b>See Communications Plan</b>						
Prepared by (Resource Unit Ldr) <i>Meredith Butcher</i>			Approved by (Planning Sect. Ch.) <i>Aileen Nichols</i>		Date <b>10/08/2023</b>	Time <b>1600</b>

# INCIDENT RADIO COMMUNICATIONS PLAN (ICS 205)

1. Incident Name:	2. Date Prepared:	3. Operational Period:
<b>CHILCOOT</b> <b>(CHILCOOT-GRIZZLY-RIDGE-BRICE-DINNER)</b>	Date: 10/06/23	Date/Time from: 10/09/23 - 0630
	Date/Time To: 10/09/23 - 1930	

4. Radio Channel Use:

Zone/ Group	Ch#	Function	Channel Name	Assignment	RX Freq	RX Tone/NAC	TX Freq	TX Tone/NA C	Mode (A/D)	Remarks
	1	TACTICAL	NORT DIR	NONE	170.5500	103.5	170.5500	103.5	A	UNASSIGNED
	2	COMMAND	REDBUTTE	ALL DIV	170.5500	103.5	164.8000	179.9	A	LOCATED ON RED BUTTE (S) ROSEBURG DISPATCH
	3	COMMAND	CHILCOOT	ALL DIV	170.5500	103.5	164.8000	192.8	A	LOCATED ON CHILCOOT RDG (S) ROSEBURG DISPATCH
	4	COMMAND	FAIRVIEW	ALL DIV	170.5500	103.5	164.8000	173.8	A	LOCATED ON FAIRVIEW MTN (N) ROSEBURG DISPATCH
	5	COMMAND	DOEHD	ALL DIV	170.5500	103.5	164.8000	186.2	A	LOCATED ON DOEHEAD MTN (S) ROSEBURG DISPATCH
	6	TACTICAL	UPF PRJ	NONE	163.7125	103.5	163.7125	103.5	A	UNASSIGNED
	7	COMMAND	ROD LANE	NONE	170.0250	000.0	166.3000	107.2	A	UNASSIGNED
	8	TACTICAL	UPF REC	DIV D	168.3875	103.5	168.3875	103.5	A	DELTA DIVISION TAC
	9	COMMAND	INTEROP	NONE	152.6600	151.4	157.8600	110.9	A	UNASSIGNED
	10	TACTICAL	CINNAMON	NONE	171.4250	103.5	166.0000	192.8	A	UNASSIGNED
	11	TACTICAL	NURD PRJ	NONE	169.1250	103.5	169.1250	103.5	A	LOCAL TAC FOR N UMP R.D.
	12	TACTICAL	DLRD PRJ	NONE	168.2625	103.5	168.2625	103.5	A	UNASSIGNED
	13	TACTICAL	CG/T PRJ	DIV H	167.3750	103.5	167.3750	103.5	A	HOTEL DIVISION TAC
	14	AIR - GROUND	V MED29	ALL	155.3475	156.7	155.3475	156.7	A	MEDICAL EVAC
	15	AIR - GROUND	A/G-49 PRI	ALL	168.0375	000.0	168.0375	000.0	A	AIR TO GROUND OPS, PRIMARY
	16	AIR - GROUND	A/G-81 SEC	ALL	166.9500	000.0	166.9500	000.0	A	AIR TO GROUND OPS, SECONDARY

5. Special Instructions  
**CURRENT CLONE: UPF23A NORT**

6. Prepared By (Communications Unit Leader)	Name: Bruce Hanna
	Signed: /s/ Bruce Hanna
<b>Dispatch staffed 0700-1900</b>	Date/Time: 10/06/23 17:00



## CHILCOOT FIRE HUMAN RESOURCES MESSAGE

**October 9 to October 13, 2023**

How are you doing? How are your attitudes? Is it harder to keep a positive attitude with the stressors of fighting fire, lack of sleep, and the cooler weather. Are you being that team mate or crew person that is helping to keep other coworkers morale up and positive? One of the quickest ways to bring a group down is to have people that are being negative. Help one another keep your mental attitudes positive.

Correct Nutrition, Hydration and Rest are good coping mechanisms for stress and fatigue. Make use of your down time and rest per the work/rest guidelines.

Each of us has a responsibility to behave in a manner that ensures a harassment-free work environment. This is accomplished when we treat others with dignity and respect.

And last, take care of yourself while out on the fire. Take time to stretch, take some deep breaths, and take your breaks. When it's time to go home to your families be sure to take breaks along the way. Getting home safely is a priority.

Your hard work is very much appreciated.

Quote for the assignment:

**“Coming Together is a Beginning, Keeping Together is Progress, Working Together is Success.”– Henry Ford**

---

Human Resource Specialist

# Dinner-Grizzly-Brice Creek- Chilcoot-Ridge Demob Check-Out Form

RO # \_\_\_\_\_ Resource Name \_\_\_\_\_ Fire: \_\_\_\_\_ Date: \_\_\_\_\_

## Initials

### Follow these steps in the order below:

- \_\_\_\_\_ 1. **Weed Wash** – ALL line resources that went off-road will need to go through a Weed Wash. If not needed, proceed to step 2.
- \_\_\_\_\_ 2. **Ground support** – Contractors must stop to sign their release inspection. The inspection is optional for agency resources. Agency resources proceed to step 3.
- \_\_\_\_\_ 3. **Supply** – Return any items you checked out. All units must have initials from SUPPLY confirming all equipment has been returned.
- \_\_\_\_\_ 4. **Communications** – Return any items you checked out. All units must have initials from COMMUNICATIONS confirming all radio equipment has been returned.
- \_\_\_\_\_ 5. **Finance** – Proceed to FINANCE to receive your final timesheet. Having ALL your time turned in will GREATLY speed up the process.
- \_\_\_\_\_ 6. **Demob** – Final step. Return this completed Demob Check-Out form and any Documentation to Demob/Check-in.

When all above information had been submitted to Demob they will notify Expanded Dispatch to release you from the incident.

---

**DMOB LIST FOR 10/09/2023**

**DINNER-BRICE CREEK-GRIZZLY FIRES**

10/09/2023 No resources demobing

**CHILCOOT-RIDGE FIRES**

10/09/2023 No resources demobing

**DMOB LIST FOR 10/10/2023**

**DINNER-BRICE CREEK-GRIZZLY FIRES**

10/10/2023 No resources demobing

**CHILCOOT-RIDGE FIRES**

10/10/2023 E-141 AUTOBROT WATER LLC WEED

10/10/2023 O-348 RHOTEN, BRIAN REAF

**DMOB LIST FOR 10/11/2023**

**DINNER-BRICE CREEK-GRIZZLY FIRES**

10/11/2023 O-18 TOMS TIMBER FMOD

**CHILCOOT-RIDGE FIRES**

10/11/2023 C-58 CR2I - NW - UMF VET CREW CR2I

**DMOB LIST FOR 10/12/2023**

**DINNER-BRICE CREEK-GRIZZLY FIRES**

10/12/2023 O-129 HANCOCK, JEDIDIAH REAF

**CHILCOOT-RIDGE FIRES**

10/12/2023 O-352 PALACIOS, LUIS F REAF

10/12/2023 O-355 JONES, MATTHEW PIERPOINT HEQB

**DMOB LIST FOR 10/13/2023**

**DINNER-BRICE CREEK-GRIZZLY FIRES**

10/13/2023 O-141 BADER, ERIC TFLD

**CHILCOOT-RIDGE FIRES**

10/13/2023 C-10007 ALPINE CRWC

10/13/2023 E-142 CARDINAL MEDICAL SOULTIONS (MOD 1) AMB2

10/13/2023 E-193 FRONT LINE (AMB 55) AMB2

10/13/2023 O-353 WEIDNER, ANTHONY LYLE SMITH HEQB

10/13/2023 O-356 THOMPSON, COLLIN JAMES HEQB

10/13/2023 O-357 MURPHY, KYLE HEQB

10/13/2023 O-358 SMITH, STERLING HEQB

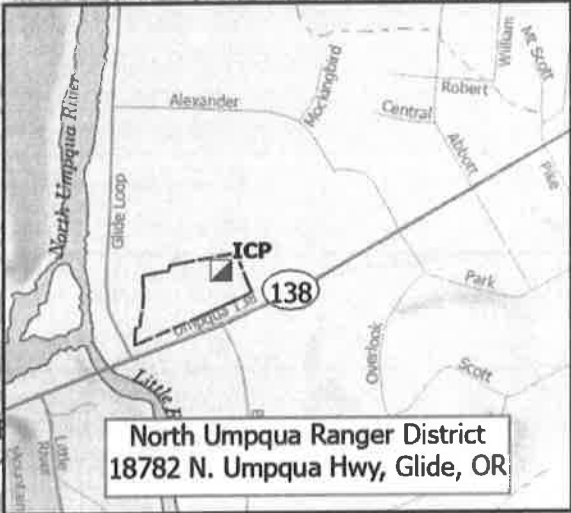
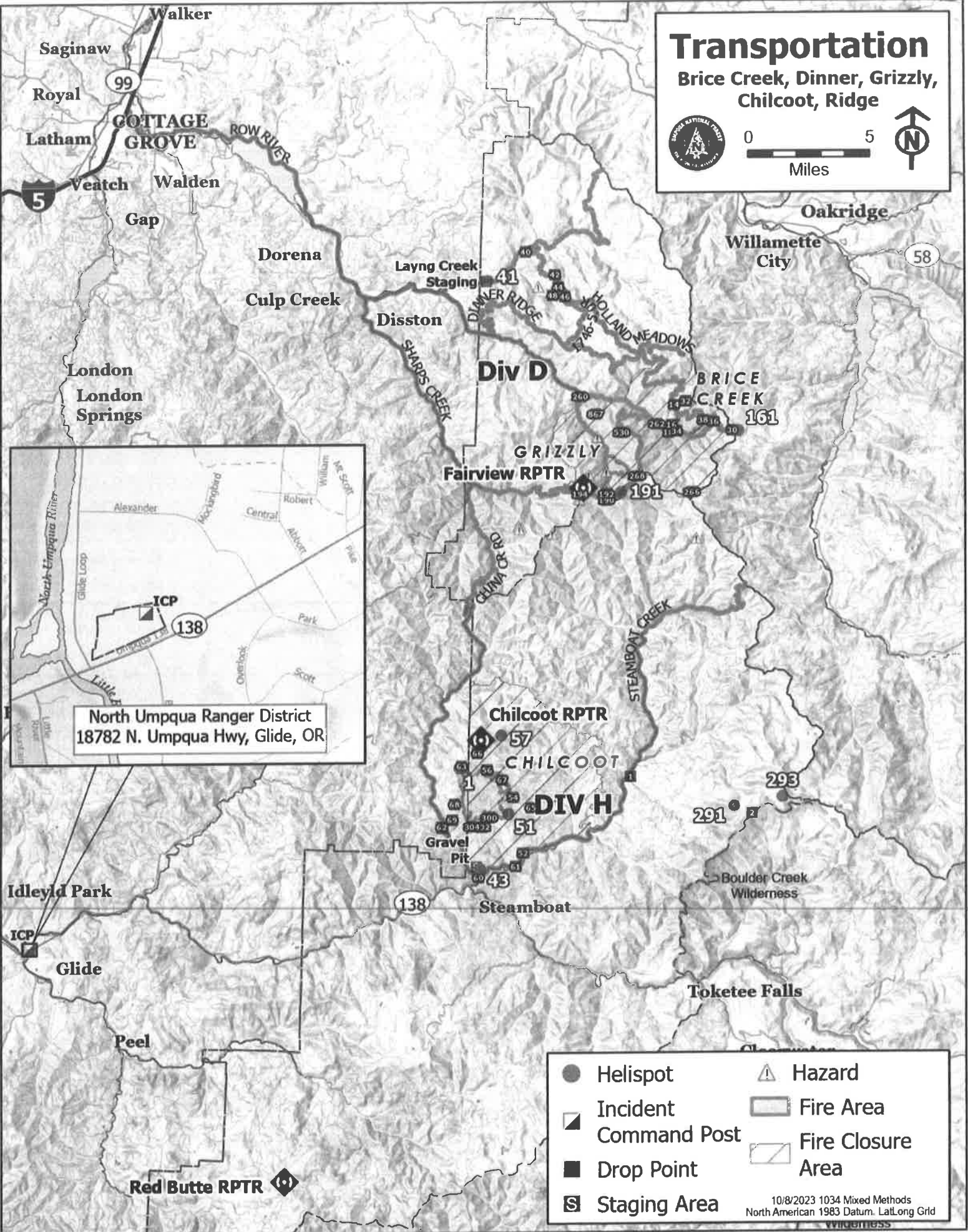
10/13/2023 O-371 ROBY, MATTHEW J TFLD

10/13/2023 O-372 WFM2 - MODULE - WILDLAND FIRE T2 - COFMS WFM2

10/13/2023 O-382 WATSON, GARRETT FORBES HEQB

# Transportation

Brice Creek, Dinner, Grizzly, Chilcoot, Ridge



North Umpqua Ranger District  
18782 N. Umpqua Hwy, Glide, OR

● Helispot	▲ Hazard
▣ Incident Command Post	▭ Fire Area
■ Drop Point	▨ Fire Closure Area
⊞ Staging Area	

10/8/2023 1034 Mixed Methods  
North American 1983 Datum, LatLong Grid





# MEDICAL PLAN (206 WF)

1. Incident/Project Name				2. Operational Period				
Brice Creek/Chilcoot				Date/Time: <b>10/09-10/2023 0630 – 1930</b>				
3. Ambulance Services								
Name	Complete Address	Phone	Advanced Life Support (ALS)					
			Yes	No				
Umpqua Valley Ambulance	Roseburg, OR	911	X					
Glide Rural Fire Protection	Glide, OR	911	X					
4. Air Ambulance Services								
Name	Phone	Type of Aircraft & Capability						
LIFE FLIGHT	1-800-232-0911 / 911	Critical Care Team of Paramedic and RN 24 hr, 100'x100' LZ.						
REACH	1-800-338-4045	Critical Care Team of Paramedic and RN 24 hr, 100'x100' LZ.						
Teton Short Haul	Chilcoot Communications	Short Haul, Daytime-Cape Blanco, OR						
Wenatchee Short Haul	Chilcoot Communications	Short Haul, Daytime-Sunriver, OR						
5. Hospitals								
Name	Degrees Decimal Minutes		Travel Time From ICP		Phone	Helipad		Level of Care
			Air	Gnd.		Yes	No	
Mercy Health Hospital 2700 NW Stewart Pkwy Roseburg, OR 97471	Lat:	43° 14.567 N	40 Min	2 Hrs	541-673-0611	X		Level III Trauma
	Long:	123° 21.983 W						
Sacred Heart Hospital 3333 Riverbend Dr. Springfield, OR 97477	Lat:	44° 04.876 N	1 Hr	3 Hrs	541-222-6931	X		Level II Trauma
	Long:	123° 01.588 W						
Legacy Emanuel Hospital (Portland, OR)	Lat:	45° 32.668' N	1.5 Hrs	5 Hrs	503-413-4121	X		Level I Trauma Burn Center
	Long:	122° 40.293' W						
BRICE CREEK	<b>EMS Responders &amp; Capability:</b>			REMS 4 Brendon Church 602-370-3778 ALS/UTV/Rope Rescue				
	Equipment Available on Scene:			ALS Kit, defib, O2				
	Medical Emergency Channel:			Chilcoot Communications Plan				
	ETA for Ambulance to Scene:							
	Air:			50 min				
	Ground:			Brice Fire to Cottage Grove 1.5 Hrs				
	Approved Heli-Spot:							
CHILCOOT	<b>EMS Responders &amp; Capability:</b>			AMBO 55 Lance Puig	972-689-3348	ALS Ambulance		
				MED MOD 1 Marcos Garcia	925-321-5013	ALS/UTV		
	Equipment Available on Scene:			ALS Kit, defib, O2, OTC meds				
	Medical Emergency Channel:			Chilcoot Communications Plan				
	ETA for Ambulance to Scene:							
	Air:			50 min				
	Ground:			Chilcoot Fire to Roseburg 1.5 Hrs				
Approved Heli-Spot:								

Prepared By (Medical Unit Leader)	Date	Reviewed By (Safety Officer)	Date
Ben Meacham MEDL	10/08/2023	Ray Hershey SOF2	10/08/2023
Signature: Ben Meacham		Signature: Ray Hershey	

# MEDICAL PLAN (ICS 206 WF)

Controlled Unclassified Information//Basic

## Medical Incident Report

**FOR A NON-EMERGENCY INCIDENT, WORK THROUGH CHAIN OF COMMAND TO REPORT AND TRANSPORT INJURED PERSONNEL AS NECESSARY.**

**FOR A MEDICAL EMERGENCY: IDENTIFY ON-SCENE INCIDENT COMMANDER BY NAME AND POSITION AND ANNOUNCE "MEDICAL EMERGENCY" TO INITIATE RESPONSE FROM IMT COMMUNICATIONS/DISPATCH.**

**Use the following items to communicate situation to communications/dispatch.**

**1. CONTACT COMMUNICATIONS / DISPATCH** (Verify correct frequency prior to starting report)

*Ex: "Communications, Div. Alpha. Stand-by for Emergency Traffic."*

**2. INCIDENT STATUS:** Provide incident summary (including number of patients) and command structure.

*Ex: "Communications, I have a Red priority patient, unconscious, struck by a falling tree. Requesting air ambulance to Forest Road 1 at (Lat./Long.) This will be the Trout Meadow Medical, IC is TFLD Jones. EMT Smith is providing medical care."*

Severity of Emergency / Transport Priority	<input type="checkbox"/> <b>RED / PRIORITY 1 Life or limb threatening injury or illness. Evacuation need is IMMEDIATE</b> <i>Ex: Unconscious, difficulty breathing, bleeding severely, 2° – 3° burns more than 4 palm sizes, heat stroke, disoriented.</i> <input type="checkbox"/> <b>YELLOW / PRIORITY 2 Serious Injury or illness. Evacuation may be DELAYED if necessary.</b> <i>Ex: Significant trauma, unable to walk, 2° – 3° burns not more than 1-3 palm sizes.</i> <input type="checkbox"/> <b>GREEN / PRIORITY 3 Minor Injury or illness. Non-Emergency transport</b> <i>Ex: Sprains, strains, minor heat-related illness.</i>	
Nature of Injury or Illness & Mechanism of Injury		<i>Brief Summary of Injury or Illness (Ex: Unconscious, Struck by Falling Tree)</i>
Evacuation Request		<i>Air Ambulance / Short Haul/Hoist Ground Ambulance / Other</i>
Patient Location		<i>Descriptive Location &amp; Lat. / Long. (WGS84)</i>
Incident Name		<i>Geographic Name + Medical (Ex: Trout Meadow Medical)</i>
On-Scene Incident Commander		<i>Name of on-scene IC of Incident within an Incident (Ex: TFLD Jones)</i>
Patient Care		<i>Name of Care Provider (Ex: EMT Smith)</i>

**3. INITIAL PATIENT ASSESSMENT:** Complete this section for each patient as applicable (start with the most severe patient)

Patient Assessment: See IRPG PAGE 106

Treatment:

**4. EVACUATION PLAN:**

Evacuation Location (if different): (Descriptive Location (drop point, intersection, etc.) or Lat. / Long.) Patient's ETA to Evacuation Location:

Helispot / Extraction Site Size and Hazards:

**5. ADDITIONAL RESOURCES / EQUIPMENT NEEDS:**

*Example: Paramedic/EMT, crews, immobilization devices, AED, oxygen, trauma bag, IV/fluid(s), splints, rope rescue, wheeled litter, HAZMAT, extrication*

**6. COMMUNICATIONS: Identify State Air/Ground EMS Frequencies and Hospital Contacts as applicable**

Function	Channel Name/Number	Receive (RX)	Tone/NAC *	Transmit (TX)	Tone/NAC *
COMMAND					
AIR-TO-GRND					
TACTICAL					

**7. CONTINGENCY: Considerations:** If primary options fail, what actions can be implemented in conjunction with primary evacuation method? Be thinking ahead..

**8. ADDITIONAL INFORMATION:** Updates/Changes, etc.

**REMEMBER:** Confirm ETAs of resources ordered. Act according to your level of training. Be Alert. Keep Calm. Think Clearly. Act Decisively.