

NEAR TERM ANALYSIS - 2 DAY

ANVIL
OR-RSF-000413
SEPT 17-18

9,023 ACRES AT 9/17/2023 1415



Div R

Div A

Div Z

ROGUE RIVER-SISKIYOU NATIONAL FORESTS

Grassy Knob
Wilderness

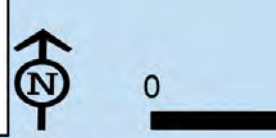
Copper
Salmon
Wilderness

Two Day Near Term Fire Burn (NTFB)

- Day 1
- Day 2

Legend:

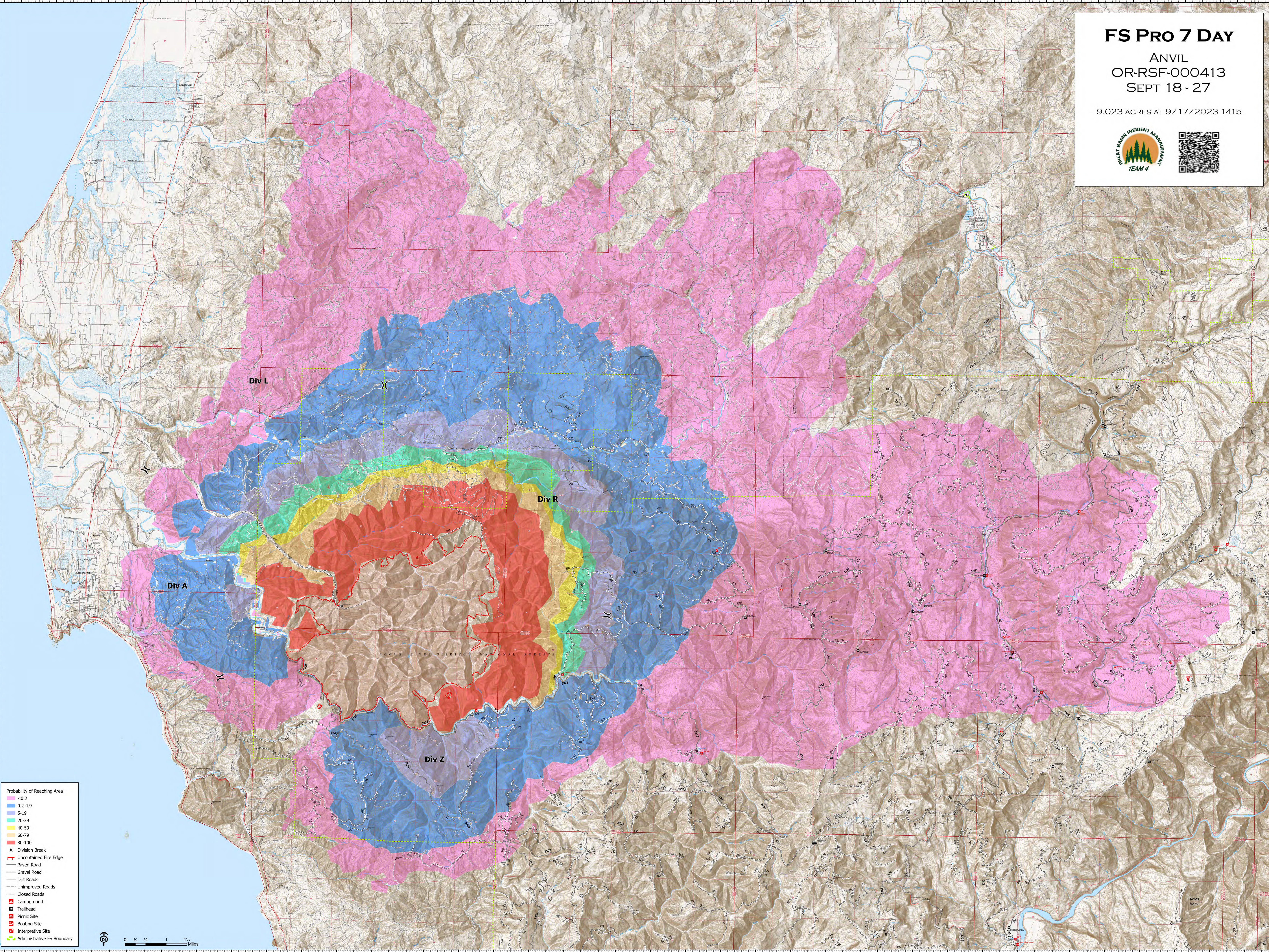
- Paved Road
- Gravel Road
- Unimproved Roads
- Closed Roads
- Campground
- Trailhead
- County Boundary
- Administrative FS Boundary
- Ranger District Boundary
- BLM Area of Critical Environmental Concern
- Bureau of Land Management (BLM)
- State
- US Fish and Wildlife Service (USFWS)
- US Forest Service (USFS)
- Coquille Lands
- US Forest Service Wilderness



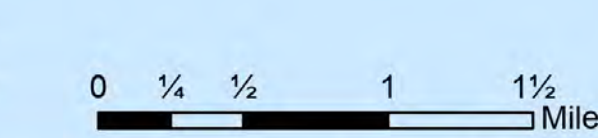
FS PRO 7 DAY

ANVIL
OR-RSF-000413
SEPT 18 - 27

9,023 ACRES AT 9/17/2023 1415



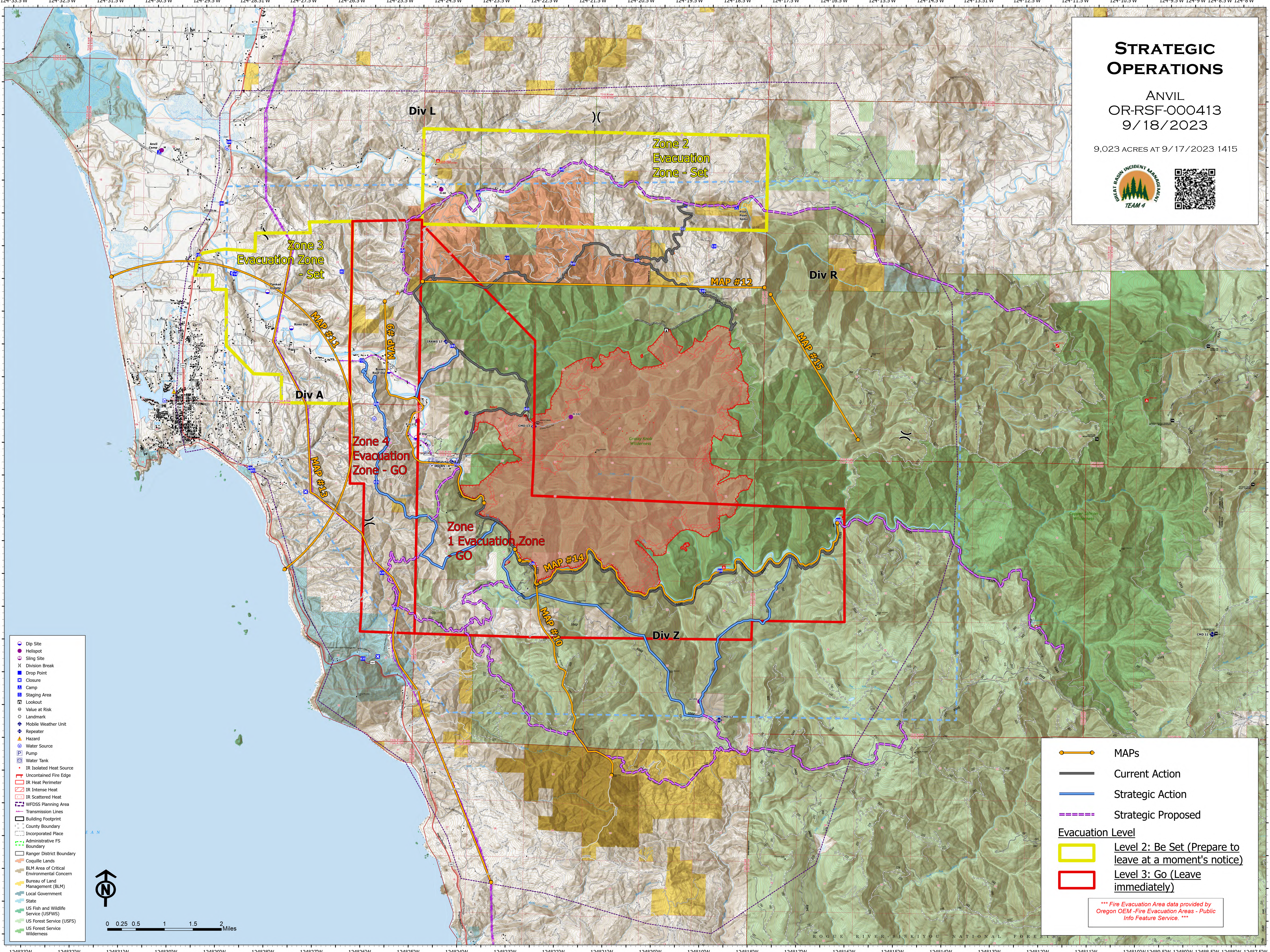
- Probability of Reaching Area
 - <0.2
 - 0.2-4.9
 - 5-19
 - 20-39
 - 40-59
 - 60-79
 - 80-100
- X Division Break
- Uncontained Fire Edge
- Paved Road
- Gravel Road
- Dirt Roads
- Unimproved Roads
- Closed Roads
- Campground
- Trailhead
- Picnic Site
- Boating Site
- Interpretive Site
- Administrative FS Boundary



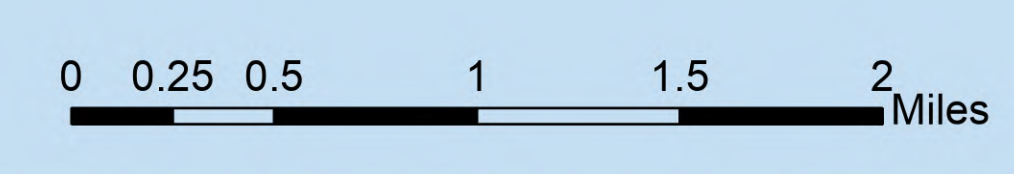
STRATEGIC OPERATIONS

ANVIL
OR-RSF-000413
9/18/2023

9,023 ACRES AT 9/17/2023 1415



- Dip Site
- Hellspot
- Sling Site
- Division Break
- Drop Point
- Closure
- Camp
- Staging Area
- Lookout
- Value at Risk
- Landmark
- Mobile Weather Unit
- Repeater
- Hazard
- Water Source
- Pump
- Water Tank
- IR Isolated Heat Source
- Uncontained Fire Edge
- IR Heat Perimeter
- IR Intense Heat
- IR Scattered Heat
- WFSS Planning Area
- Transmission Lines
- Building Footprint
- County Boundary
- Incorporated Place
- Administrative FS Boundary
- Ranger District Boundary
- Coquille Lands
- BLM Area of Critical Environmental Concern
- Bureau of Land Management (BLM)
- Local Government
- State
- US Fish and Wildlife Service (USFWS)
- US Forest Service (USFS)
- US Forest Service Wilderness



- MAPs
 - Current Action
 - Strategic Action
 - Strategic Proposed
- Evacuation Level**
- Level 2: Be Set (Prepare to leave at a moment's notice)
 - Level 3: Go (Leave immediately)

*** Fire Evacuation Area data provided by Oregon OEM - Fire Evacuation Areas - Public Info Feature Service. ***