

# Flat REPAIR

OR-RSF-000209

8/29/2023

Div W

34,242 acres at 8/27/2023 2343

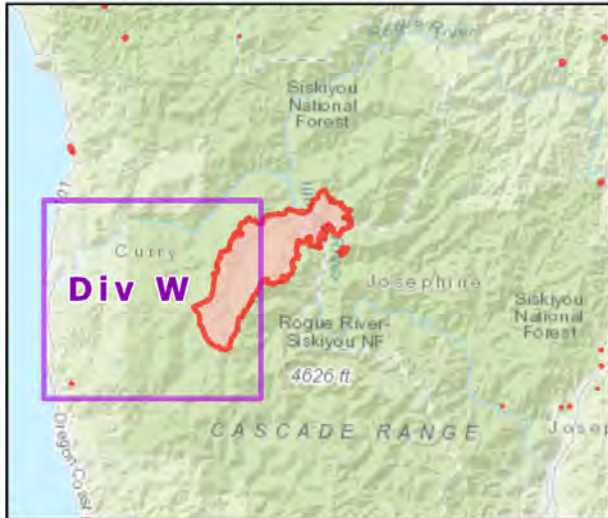


- Repair Status
  - Needs Assessment
  - Repair Needed
  - Completed - Ready for Inspection
  - Completed - Inspected
  - Other - See Comments
  - Needs Assessment
  - Repair Needed
  - In Progress
  - Completed - Ready for Inspection
  - Completed - Inspected
  - Dip Site
  - Helispot
  - Helibase
  - Division Break
  - Incident Command Post
  - Drop Point
  - Closure
  - Camp
  - Lookout
  - Hot Spot - Spot Fire
  - Value at Risk
  - Other
  - Landmark
- Gate
- Bridge
- Stream Crossing
- Road Repair
- Repair Point
- Landing or Log Deck
- Dozer Push
- Culvert
- Clean Up Area
- Mobile Weather Unit
- Internet Access
- Repeater
- Hazard
- Water Source
- Restricted Water Source
- Pump
- Completed Dozer Line
- Completed Fuel Break
- Completed Hand Line
- Completed Road as Line
- Access or Improved Road
- Temporary Flight Restriction
- Contained

Event Points  
NO Repair Points IF Repair Status = "No Repair Needed"

Repair Status - Points  
NO Repair Status = "In Use" or "No Repair Needed"

Repair Status Lines  
NO Access Roads or Road as Line  
NO Repair Status = "In Use" or "No Repair Needed"



Scan for digital maps



8/28/2023 2245

NAD 1983 2011 Datum, LatLong Grid

