

Flat REPAIR

OR-RSF-000209

8/29/2023

Div F

34,242 acres at 8/27/2023 2343

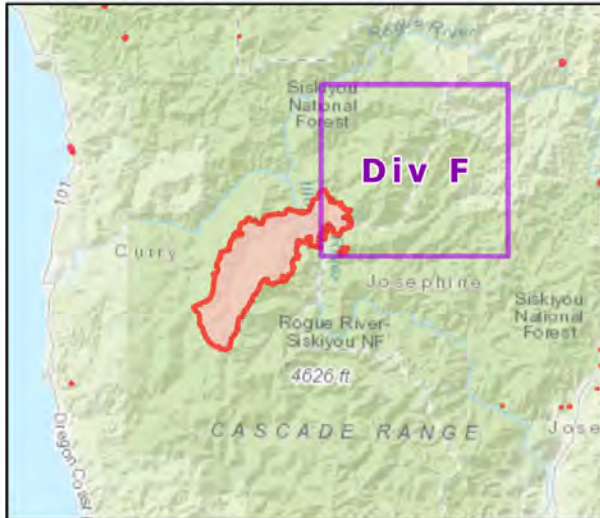


- Repair Status
- Needs Assessment
 - Repair Needed
 - Completed - Ready for Inspection
 - Repair Needed
 - Completed - Ready for Inspection
 - Completed - Inspected
- Helispot
- Division Break
 - Drop Point
 - Closure
 - Hot Spot - Spot Fire
 - Value at Risk
 - Other
 - Landmark
 - Gate
 - Bridge
 - Road Repair
 - Repair Point
 - Dozer Push
 - Culvert
 - Internet Access
 - Repeater
 - Hazard
 - Water Source
 - Pump
 - Water Tank
 - Completed Dozer Line
 - Completed Hand Line
 - Completed Road as Line
 - Access or Improved Road
 - Temporary Flight Restriction
 - Contained
 - Uncontained

Event Points
NO Repair Points IF Repair Status = "No Repair Needed"

Repair Status - Points
NO Repair Status = "In Use" or "No Repair Needed"

Repair Status Lines
NO Access Roads or Road as Line
NO Repair Status = "In Use" or "No Repair Needed"



Scan for digital maps



8/28/2023 2248

NAD 1983 2011 Datum, LatLong Grid

