

Flat REPAIR

OR-RSF-000209

8/29/2023

Div T

34,242 acres at 8/27/2023 2343

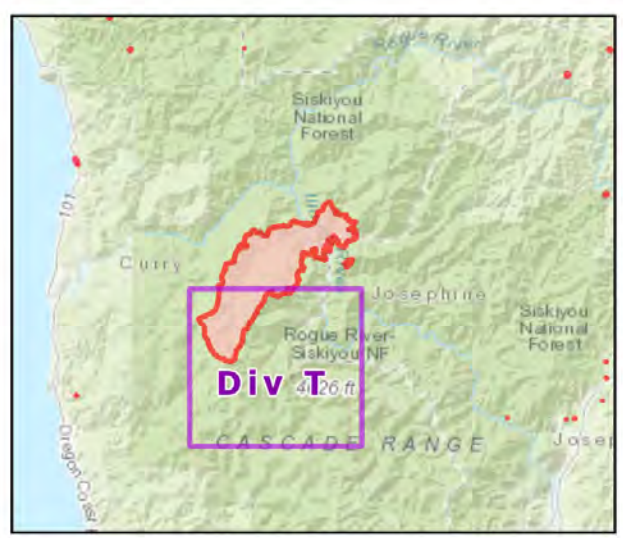


- Repair Status
 - Needs Assessment
 - Repair Needed
 - Completed - Ready for Inspection
 - Needs Assessment
 - Repair Needed
 - Completed - Ready for Inspection
 - Completed - Inspected
- Dip Site
- Helispot
- Division Break
- Drop Point
- Closure
- Lookout
- Hot Spot - Spot Fire
- Value at Risk
- Other
- Landmark
- Gate
- Bridge
- Stream Crossing
- Road Repair
- Repair Point
- Landing or Log Deck
- Dozer Push
- Culvert
- Clean Up Area
- Mobile Weather Unit
- Internet Access
- Repeater
- Hazard
- Water Source
- Restricted Water Source
- Pump
- Completed Dozer Line
- Completed Fuel Break
- Completed Hand Line
- Completed Road as Line
- Planned Hand Line
- Access or Improved Road
- Temporary Flight Restriction
- Contained
- Uncontained

Event Points
NO Repair Points IF Repair Status = "No Repair Needed"

Repair Status - Points
NO Repair Status = "In Use" or "No Repair Needed"

Repair Status Lines
NO Access Roads or Road as Line
NO Repair Status = "In Use" or "No Repair Needed"



Scan for digital maps



8/28/2023 2249

NAD 1983 2011 Datum, LatLong Grid

