

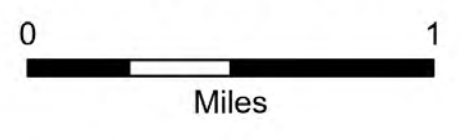
# Flat REPAIR

OR-RSF-000209

8/29/2023

Div D

34,242 acres at 8/27/2023 2343

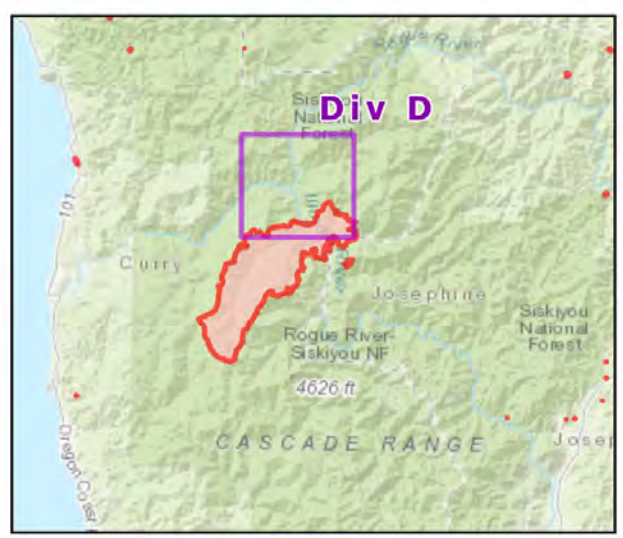


- Repair Status
- Needs Assessment
  - Repair Needed
  - Completed - Inspected
  - Needs Assessment
  - Repair Needed
  - In Progress
  - Completed - Inspected
  - Dip Site
  - Helispot
  - X Division Break
  - Drop Point
  - Closure
  - Camp
  - Hot Spot - Spot Fire
  - Value at Risk
  - Other
  - Landmark
  - Bridge
  - Water Development or Draft Site
  - Road Repair
  - Retardant in Avoidance Area
  - Repair Point
  - Dozer Push
  - Culvert
  - Clean Up Area
  - Mobile Weather Unit
  - Repeater
  - Hazard
  - Water Source
  - Pump
  - Water Tank
  - Completed Dozer Line
  - Completed Fuel Break
  - Completed Hand Line
  - Completed Mixed Construction Line
  - Completed Road as Line
  - Access or Improved Road
  - Road Repair
  - Temporary Flight Restriction
  - Contained
  - Uncontained

Event Points  
NO Repair Points IF Repair Status = "No Repair Needed"

Repair Status - Points  
NO Repair Status = "In Use" or "No Repair Needed"

Repair Status Lines  
NO Access Roads or Road as Line  
NO Repair Status = "In Use" or "No Repair Needed"



8/28/2023 2252

NAD 1983 2011 Datum, LatLong Grid

