

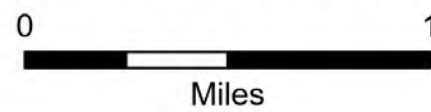
Flat REPAIR

OR-RSF-000209

8/31/2023

Div D

34,242 acres at 8/30/2023 2036

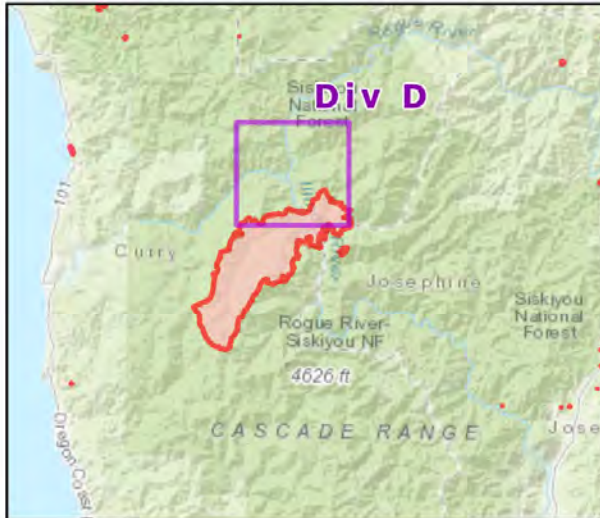


- Repair Status
- Needs Assessment
 - Repair Needed
 - Completed - Inspected
 - Needs Assessment
 - Repair Needed
 - In Progress
 - Completed - Inspected
- Dip Site
- Helispot
 - Division Break
 - Drop Point
 - Closure
 - Camp
 - Hot Spot - Spot Fire
 - Value at Risk
 - Other
 - Landmark
 - Bridge
 - Water Development or Draft Site
 - Road Repair
 - Retardant in Avoidance Area
 - Repair Point
 - Dozer Push
 - Culvert
 - Clean Up Area
 - Mobile Weather Unit
 - Repeater
 - Hazard
 - Water Source
 - Pump
 - Water Tank
 - Completed Dozer Line
 - Completed Fuel Break
 - Completed Hand Line
 - Completed Mixed Construction Line
 - Completed Road as Line
 - Access or Improved Road
 - Road Repair
 - Temporary Flight Restriction
 - Contained
 - Uncontained

Event Points
NO Repair Points IF Repair Status = "No Repair Needed"

Repair Status - Points
NO Repair Status = "In Use" or "No Repair Needed"

Repair Status Lines
NO Access Roads or Road as Line
NO Repair Status = "In Use" or "No Repair Needed"



Scan for digital maps



8/31/2023 0017

NAD 1983 2011 Datum, LatLong Grid

