

# Flat REPAIR

OR-RSF-000209

8/31/2023

Div F

34,242 acres at 8/30/2023 2036

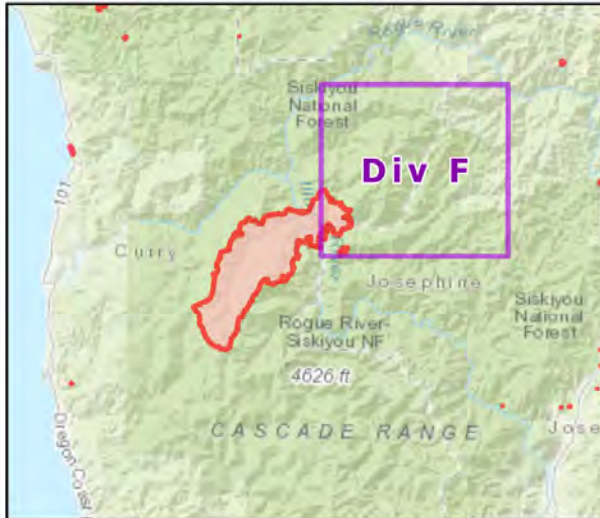


- Repair Status
- Needs Assessment
  - Repair Needed
  - Completed - Ready for Inspection
  - Repair Needed
  - Completed - Ready for Inspection
  - Completed - Inspected
- Helispot
- Division Break
  - Drop Point
  - Closure
  - Hot Spot - Spot Fire
  - Value at Risk
  - Other
  - Landmark
  - Gate
  - Bridge
  - Road Repair
  - Repair Point
  - Dozer Push
  - Culvert
  - Internet Access
  - Repeater
  - Hazard
  - Water Source
  - Pump
  - Water Tank
  - Completed Dozer Line
  - Completed Hand Line
  - Completed Road as Line
  - Access or Improved Road
  - Temporary Flight Restriction
  - Contained
  - Uncontained

Event Points  
NO Repair Points IF Repair Status = "No Repair Needed"

Repair Status - Points  
NO Repair Status = "In Use" or "No Repair Needed"

Repair Status Lines  
NO Access Roads or Road as Line  
NO Repair Status = "In Use" or "No Repair Needed"

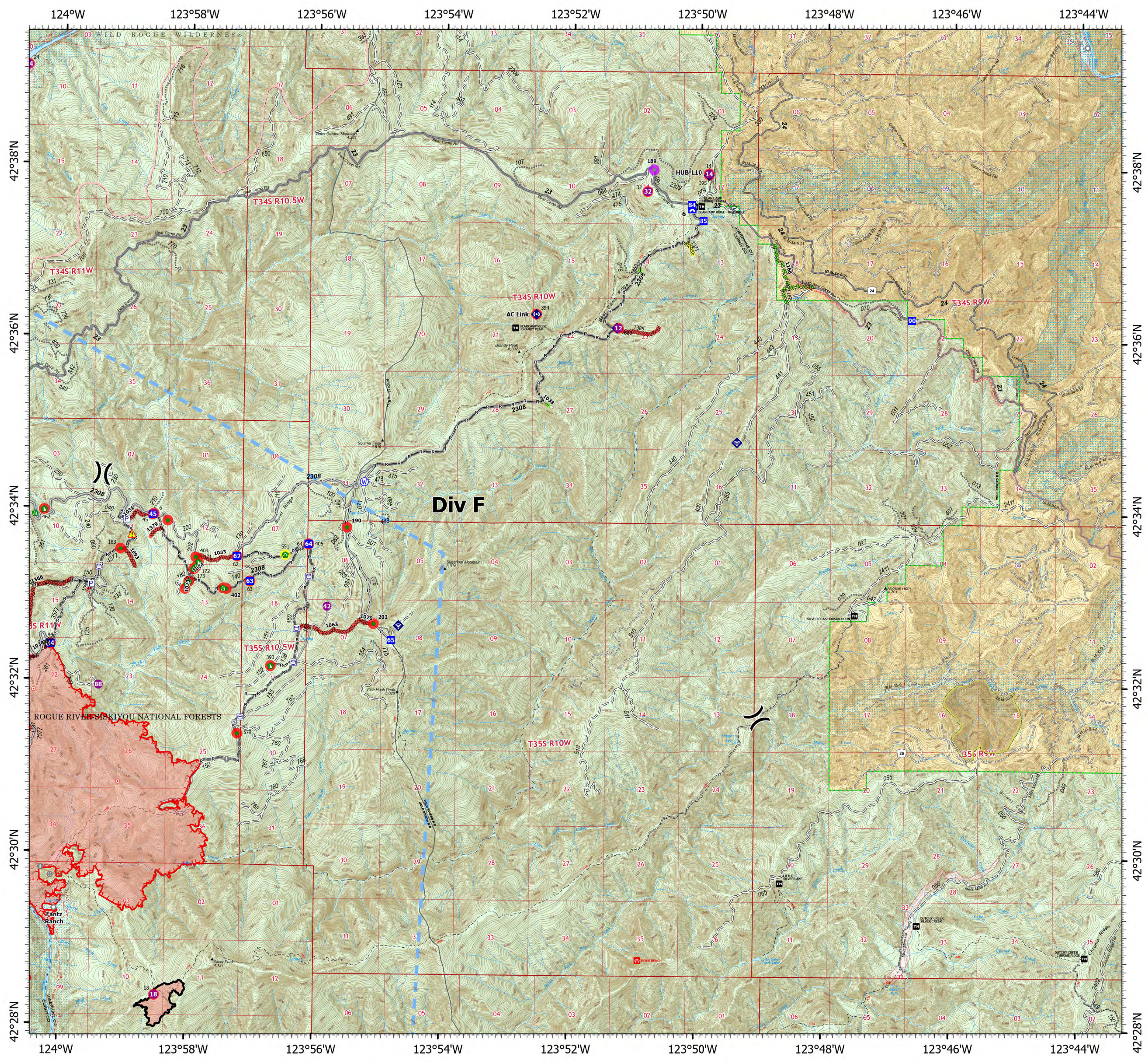


Scan for digital maps



8/31/2023 0019

NAD 1983 2011 Datum, LatLong Grid





# Flat REPAIR

OR-RSF-000209

8/31/2023

Div T

34,242 acres at 8/30/2023 2036

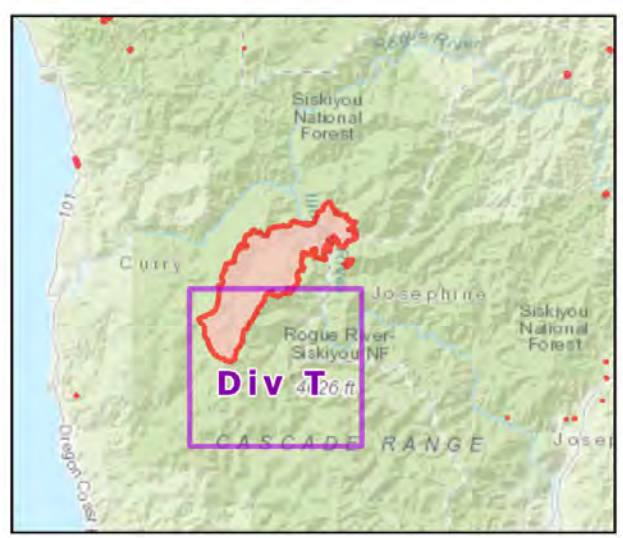


- Repair Status
  - Needs Assessment
  - Repair Needed
  - Needs Assessment
  - Repair Needed
  - Completed - Ready for Inspection
  - Completed - Inspected
- Dip Site
- Helispot
- Division Break
- Drop Point
- Closure
- Lookout
- Hot Spot - Spot Fire
- Value at Risk
- Other
- Landmark
- Gate
- Bridge
- Stream Crossing
- Road Repair
- Repair Point
- Landing or Log Deck
- Dozer Push
- Culvert
- Clean Up Area
- Mobile Weather Unit
- Internet Access
- Repeater
- Hazard
- Water Source
- Restricted Water Source
- Pump
- Completed Dozer Line
- Completed Fuel Break
- Completed Hand Line
- Completed Road as Line
- Planned Hand Line
- Access or Improved Road
- Temporary Flight Restriction
- Contained
- Uncontained

Event Points  
NO Repair Points IF Repair Status = "No Repair Needed"

Repair Status - Points  
NO Repair Status = "In Use" or "No Repair Needed"

Repair Status Lines  
NO Access Roads or Road as Line  
NO Repair Status = "In Use" or "No Repair Needed"



Scan for digital maps



8/31/2023 0020

NAD 1983 2011 Datum, LatLong Grid

