

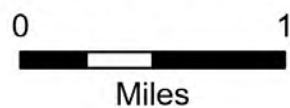
Flat REPAIR

OR-RSF-000209

8/31/2023

Div T

34,242 acres at 8/30/2023 2036

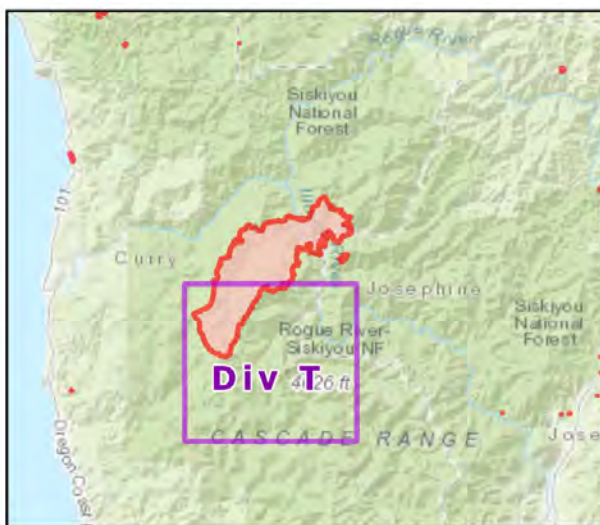


- Repair Status
- Needs Assessment
 - Repair Needed
 - Needs Assessment
 - Repair Needed
 - Completed - Ready for Inspection
 - Completed - Inspected
 - Dip Site
 - Helispot
 - X Division Break
 - Drop Point
 - X Closure
 - H Lookout
 - Hot Spot - Spot Fire
 - Value at Risk
 - Other
 - Landmark
 - Gate
 - Bridge
 - Stream Crossing
 - Road Repair
 - Repair Point
 - Landing or Log Deck
 - Dozer Push
 - Culvert
 - Clean Up Area
 - Mobile Weather Unit
 - Internet Access
 - Repeater
 - ▲ Hazard
 - Water Source
 - Restricted Water Source
 - Pump
 - XX Completed Dozer Line
 - M Completed Fuel Break
 - H Completed Hand Line
 - R Completed Road as Line
 - H Planned Hand Line
 - Access or Improved Road
 - Temporary Flight Restriction
 - Contained
 - Uncontained

Event Points
NO Repair Points IF Repair Status = "No Repair Needed"

Repair Status - Points
NO Repair Status = "In Use" or "No Repair Needed"

Repair Status Lines
NO Access Roads or Road as Line
NO Repair Status = "In Use" or "No Repair Needed"



Scan for digital maps



8/31/2023 0027



NAD 1983 2011 Datum, LatLong Grid

