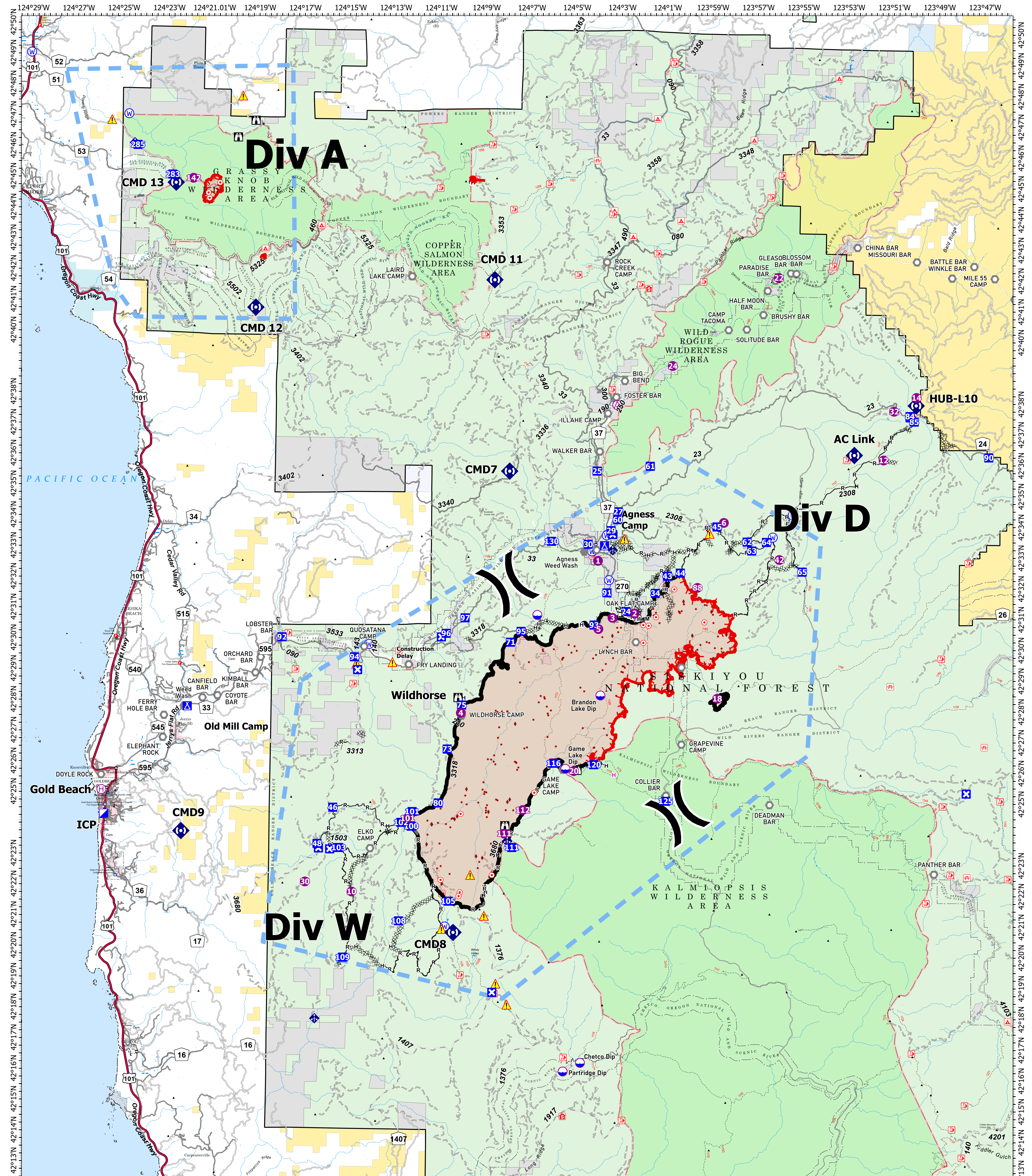


# BRIEFING - FLAT/ANVIL

# 9/5/2023



**FLAT**  
OR-RSF-000209  
34,242 acres  
as of 8/30/2023 2036

**ANVIL**  
OR-RSF-000413  
299 acres  
as of 9/2/2023 2224

- |                         |                   |                       |                        |                           |                                |                                |                                   |  |
|-------------------------|-------------------|-----------------------|------------------------|---------------------------|--------------------------------|--------------------------------|-----------------------------------|--|
| ○ Aerial Hazard         | ⊠ Closure         | ○ Landmark            | ○ Water Source         | — Completed               | — Planned Hand Line            | — Fire Edge (Field Collection) | — Bureau of Land Management (BLM) | — US Fish and Wildlife Service (USFWS) |
| ○ Dip Site              | ⊠ Camp            | ⊠ Mobile Weather Unit | ⊠ Completed Dozer Line | — Mixed Construction Line | — Other                        | — US Forest Service            | — Local Government                | — US Forest Service (USFS)             |
| ○ Helibase              | ⊠ Lookout         | ⊠ Repeater            | ⊠ Completed Fuel Break | — Completed Road as Line  | — Temporary Flight Restriction | — Service Wilderness           | — State                           |  |
| ⊠ Division Break        | ⊠ Hot Spot - Spot | ⊠ Safety Zone         | ⊠ Completed Hand Line  |                           |                                |                                |                                   |  |
| ⊠ Incident Command Post | ⊠ Fire            | ⊠ Hazard              |                        |                           |                                |                                |                                   |  |
|                         | ⊠ Other           |                       |                        |                           |                                |                                |                                   |  |

