

Flat REPAIR
 OR-RSF-000209
 9/5/2023
 Div D East
 34,242 acres at 8/30/2023 2036

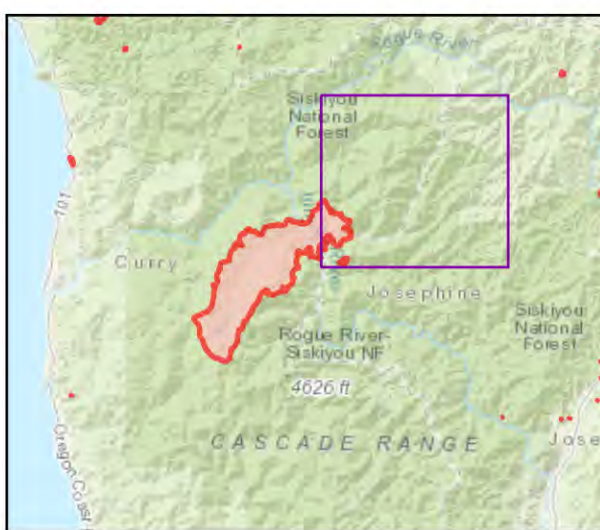


- Repair Status
- Needs Assessment
 - Repair Needed
 - Completed - Ready for Inspection
 - Repair Needed
 - ▬ In Progress
 - ▬ Completed - Ready for Inspection
 - ▬ Completed - Inspected
 - Helispot
 - Drop Point
 - ⊠ Closure
 - Hot Spot - Spot Fire
 - Value at Risk
 - Other
 - Landmark
 - Gate
 - Bridge
 - ▬ Road Repair
 - ▬ Repair Point
 - ▬ Dozer Push
 - ▬ Culvert
 - ◆ Internet Access
 - ◆ Repeater
 - ▲ Hazard
 - ⊙ Water Source
 - ⊙ Pump
 - ⊙ Water Tank
 - ⊗ Completed Dozer Line
 - ⊗ Completed Hand Line
 - ⊗ Completed Road as Line
 - ▬ Access or Improved Road
 - ▬ Temporary Flight Restriction
 - ▬ Contained
 - ▬ Uncontained

Event Points
 NO Repair Points IF Repair Status = "No Repair Needed"

Repair Status - Points
 NO Repair Status = "In Use" or "No Repair Needed"

Repair Status Lines
 NO Access Roads or Road as Line
 NO Repair Status = "In Use" or "No Repair Needed"



Scan for digital maps



9/4/2023 2148

NAD 1983 2011 Datum, LatLong Grid

