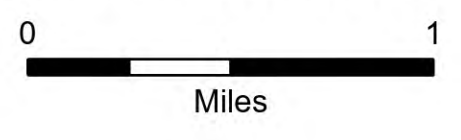


# Flat REPAIR

OR-RSF-000209  
9/5/2023  
Div D North  
34,242 acres at 8/30/2023 2036

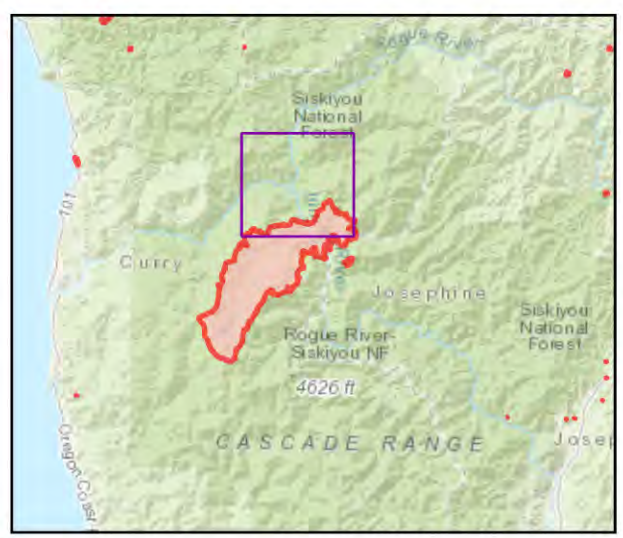


- Repair Status
  - Needs Assessment
  - Repair Needed
  - Completed - Ready for Inspection
  - Completed - Inspected
  - Repair Needed
  - In Progress
  - Completed - Ready for Inspection
  - Completed - Inspected
- Other - See Comments
- Event Line Repair Status TABLE-HIGH
- EventPolygon
- GNIS Populated Places Some
- Campground
- Trailhead
- Trail
- National Designated Trail
- Paved Road
- Gravel Road
- Dirt Roads
- Unimproved Roads
- Closed Roads
- Paved Roads
- Dirt (Not Paved)
- Egress Routes
- FS Common Unit Names
- Administrative FS Boundary
- Ranger District Boundary
- Federal Wilderness Boundary
- State Boundary
- County Boundary
- Lake / Pond
- Lake / Pond (Intermittent)
- Gaging Station
- Spring/Seep
- Stream / River
- Stream/River; Artificial Path
- Stream/River Intermittent
- Township/Range
- Section
- Normal Index
- Normal Intermediate
- Freshwater Emergent Wetland
- Freshwater Forested/Shrub Wetland
- Freshwater Pond
- World Hillshade
- Scenic Byway
- Wild and Scenic River
- Forest Service Land
- Other State Lands
- State Boundary Fill

Event Points  
NO Repair Points IF Repair Status = "No Repair Needed"

Repair Status - Points  
NO Repair Status = "In Use" or "No Repair Needed"

Repair Status Lines  
NO Access Roads or Road as Line  
NO Repair Status = "In Use" or "No Repair Needed"



Scan for digital maps

9/4/2023 2146

NAD 1983 2011 Datum. LatLong Grid

