

Flat REPAIR

OR-RSF-000209

9/5/2023

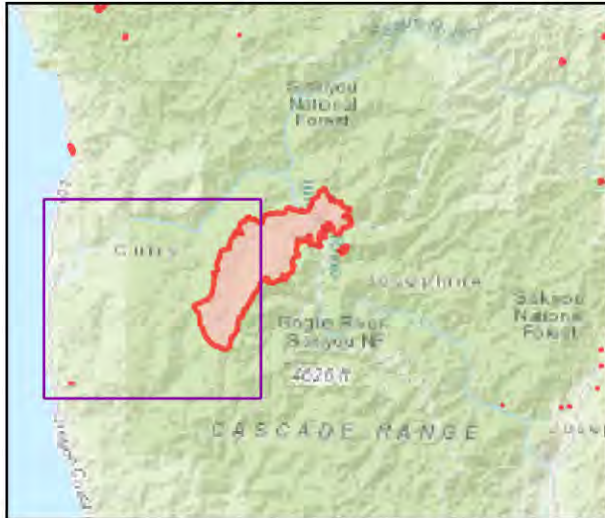
Div W West

34,242 acres at 8/30/2023 2036



- Repair Status
 - Needs Assessment
 - Repair Needed
 - Completed - Inspected
 - Other - See Comments
- Event Line Repair Status TABLE-HIGH
- GNIS Populated Places Some
- Ranger District Office
- Campground
- Trailhead
- Boating Site
- Interpretive Site
- Trail
- Tunnel; Bridge
- Paved Road
- Gravel Road
- Dirt Roads
- Camp
- Unimproved Roads
- Closed Roads
- Primary Highway
- Paved Roads
- Dirt (Not Paved)
- Runway
- Egress Routes
- FS Common Unit Names
- Administrative FS Boundary
- Ranger District Boundary
- Federal Wilderness Boundary
- Approved or Proclamation Boundary, USFWS
- Wilderness Boundary, USFWS
- Area of Critical Environmental Concern, BLM
- State Land
- State Boundary
- County Boundary
- Incorporated Place
- Census Designated Place
- Restricted Water Source
- Lake / Pond (Intermittent)
- Reservoir
- Rock (abovewater)
- Spring/Seep
- Access or Improved Road
- Temporary Flight Restriction
- Contained
- Stream / River
- Stream / River (Intermittent)
- Stream/River; Artificial Path
- Canal / Ditch
- Stream/River Intermittent
- Township/Range
- Section Protracted
- Section
- Depression Intermediate
- Normal Index

- Event Points
 - NO Repair Points IF Repair Status = "No Repair Needed"
- Repair Status - Points
 - NO Repair Status = "In Use" or "No Repair Needed"
- Repair Status Lines
 - NO Access Roads or Road as Line
 - NO Repair Status = "In Use" or "No Repair Needed"



Scan for digital maps



9/4/2023 2120

NAD 1983 2011 Datum. LatLong Grid

