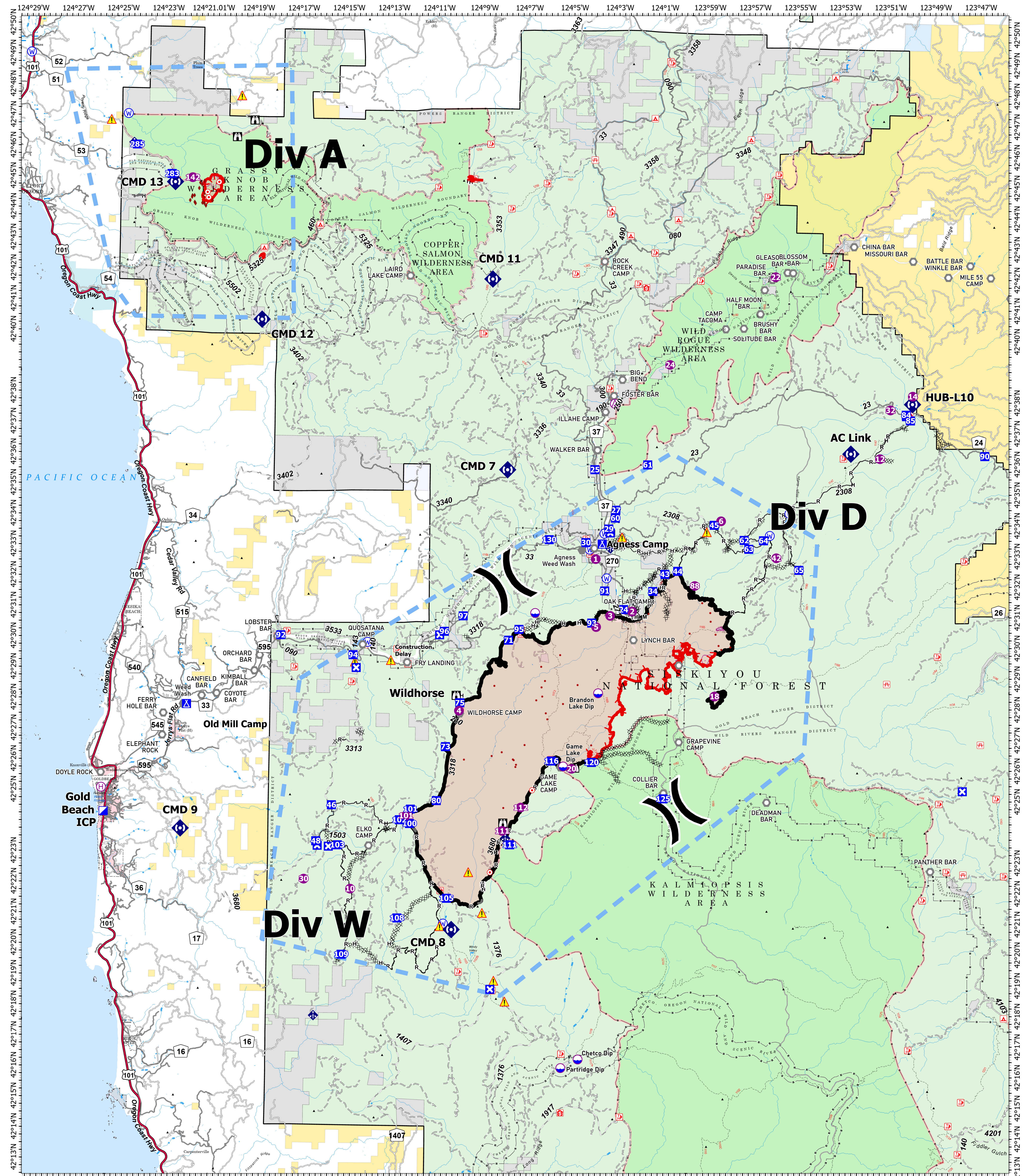


BRIEFING - FLAT/ANVIL

9/7/2023



FLAT
OR-RSF-000209
34,242 acres
as of 9/4/2023 2100

ANVIL
OR-RSF-000413
313 acres
as of 9/6/2023 2115

- | | | | | | | | | |
|-------------------------|-------------------|-----------------------|------------------------|---------------------------|--------------------------------|--------------------------------|-----------------------------------|--|
| ○ Aerial Hazard | ⊠ Closure | ○ Landmark | ○ Water Source | — Completed Hand Line | — Completed Road as Line | — Fire Edge (Field Collection) | — Bureau of Land Management (BLM) | — US Fish and Wildlife Service (USFWS) |
| ○ Dip Site | ⊠ Camp | ⊠ Mobile Weather Unit | ⊠ Completed Dozer Line | — Completed Fuel Break | — Other | — US Forest Service Wilderness | — Local Government | — US Forest Service (USFS) |
| ○ Helibase | ⊠ Lookout | ⊠ Repeater | ⊠ Completed Fuel Break | — Mixed Construction Line | — Temporary Flight Restriction | — Service Wilderness | — State | |
| ⊠ Division Break | ⊠ Hot Spot - Spot | ⊠ Safety Zone | | | | | | |
| ⊠ Incident Command Post | ● Other | ⊠ Hazard | | | | | | |

