

Flat REPAIR
OR-RSF-000209
9/7/2023
Div D East
34,242 acres at 9/4/2023 2100

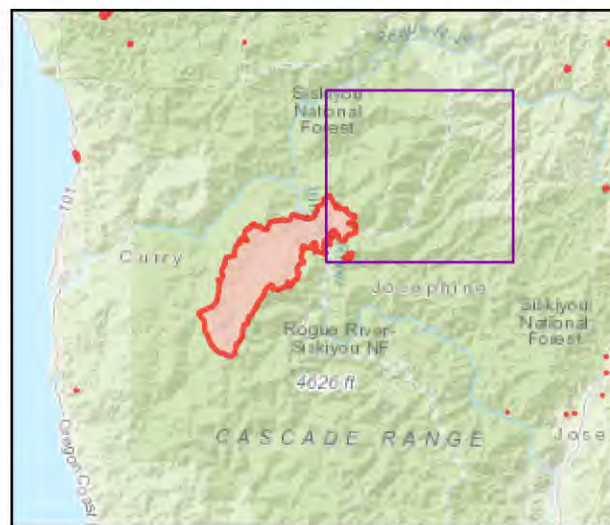


- Repair Status
- Needs Assessment
 - Repair Needed
 - Completed - Ready for Inspection
 - Repair Needed
 - In Progress
 - Completed - Ready for Inspection
 - Completed - Inspected
- Helispot
- Drop Point
- ⊠ Closure
- ⊕ Value at Risk
- Other
- ⊙ Landmark
- ⊙ Gate
- ⊙ Bridge
- ⊙ Road Repair
- ⊙ Repair Point
- ⊙ Dozer Push
- ⊙ Culvert
- ⊙ Internet Access
- ⊙ Repeater
- ⊙ Hazard
- ⊙ Water Source
- ⊙ Pump
- ⊙ Water Tank
- ⊙⊙ Completed Dozer Line
- H— Completed Hand Line
- R— Completed Road as Line
- Access or Improved Road
- Temporary Flight Restriction
- ▬ Contained
- ▬ Uncontained

Event Points
NO Repair Points IF Repair Status = "No Repair Needed"

Repair Status - Points
NO Repair Status = "In Use" or "No Repair Needed"

Repair Status Lines
NO Access Roads or Road as Line
NO Repair Status = "In Use" or "No Repair Needed"



Scan for digital maps



9/6/2023 2016

NAD 1983 2011 Datum, LatLong Grid

