

# Flat REPAIR

OR-RSF-000209  
9/7/2023  
Div W East  
34,242 acres at 9/4/2023 2100

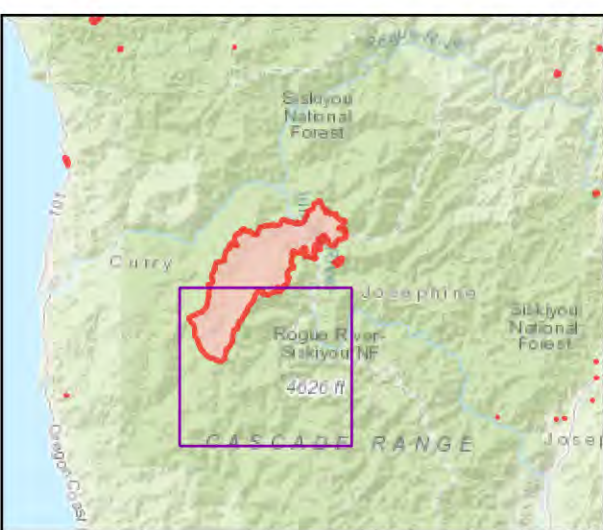


- |  |  |
|--|--|
| <ul style="list-style-type: none"> <li>Repair Status</li> <li>Needs Assessment</li> <li>Repair Needed</li> <li>Completed - Inspected</li> <li>Needs Assessment</li> <li>Repair Needed</li> <li>Completed - Inspected</li> <li>Dip Site</li> <li>Hellspot</li> <li>Division Break</li> <li>Drop Point</li> <li>Closure</li> <li>Lookout</li> <li>Hot Spot - Spot Fire</li> <li>Value at Risk</li> <li>Other</li> <li>Landmark</li> <li>Gate</li> <li>Bridge</li> <li>Stream Crossing</li> <li>Road Repair</li> <li>Repair Point</li> <li>Landing or Log Deck</li> <li>Dozer Push</li> <li>Culvert</li> <li>Clean Up Area</li> <li>Mobile Weather Unit</li> <li>Internet Access</li> <li>Repeater</li> <li>Hazard</li> <li>Water Source</li> <li>Restricted Water Source</li> <li>Pump</li> <li>Completed Dozer Line</li> <li>Completed Fuel Break</li> <li>Completed Hand Line</li> <li>Completed Road as Line</li> <li>Access or Improved Road</li> <li>Temporary Flight Restriction</li> <li>Contained</li> <li>Uncontained</li> <li>GNIS_USGS_Mountain_Features</li> </ul> | <ul style="list-style-type: none"> <li>Valley (Not Canyon) 15050</li> <li>Repair Needed</li> <li>Event Line Repair Status TABLE-HIGH</li> <li>EventPolygon</li> <li>Trailhead</li> <li>Boating Site</li> <li>Trail</li> <li>National Designated Trail</li> <li>Gravel Road</li> <li>Dirt Roads</li> <li>Unimproved Roads</li> <li>Closed Roads</li> <li>Dirt (Not Paved)</li> <li>Egress Routes</li> <li>FS Common Unit Names</li> <li>Administrative FS Boundary</li> <li>Ranger District Boundary</li> <li>Federal Wilderness Boundary</li> <li>State Boundary</li> <li>County Boundary</li> <li>Lake / Pond</li> <li>Lake / Pond (Intermittent)</li> <li>Spring/Seep</li> <li>Rapids</li> <li>Stream / River</li> <li>Stream/River, Artificial Path</li> <li>Stream/River Intermittent</li> <li>Township/Range</li> <li>Section Protracted</li> <li>Section</li> <li>Depression Intermediate</li> <li>Normal Index</li> <li>Normal Intermediate</li> <li>Freshwater Emergent Wetland</li> <li>Freshwater Forested/Shrub Wetland</li> <li>Freshwater Pond</li> <li>World Hillshade</li> <li>Wild and Scenic River</li> <li>Forest Service Land</li> <li>State Boundary Fill</li> </ul> |
|--|--|

Event Points  
NO Repair Points IF Repair Status = "No Repair Needed"

Repair Status - Points  
NO Repair Status = "In Use" or "No Repair Needed"

Repair Status Lines  
NO Access Roads or Road as Line  
NO Repair Status = "In Use" or "No Repair Needed"



Scan for digital maps



9/6/2023 2020

NAD 1983 2011 Datum, LatLong Grid

