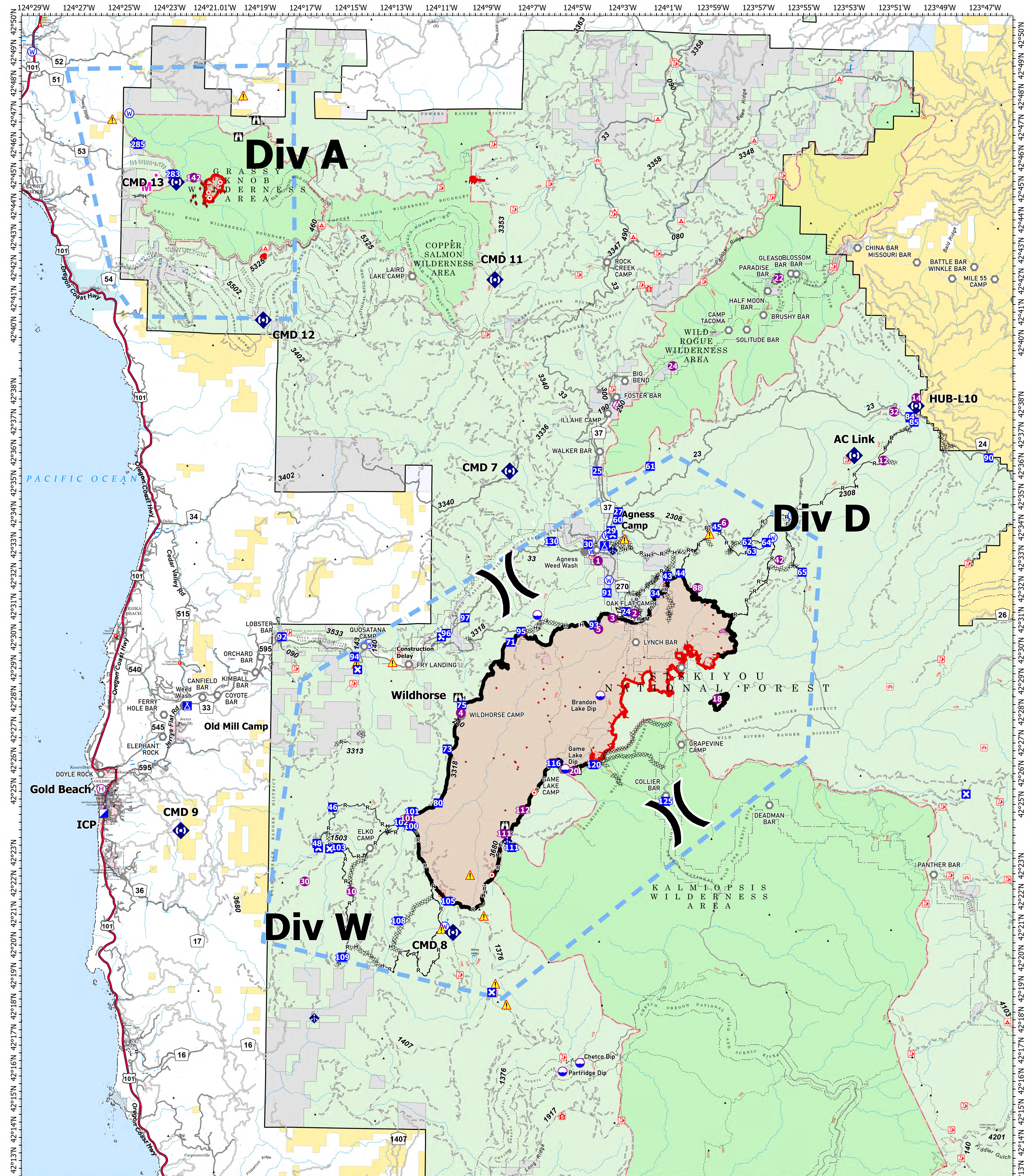


BRIEFING - FLAT/ANVIL

9/8/2023



FLAT
OR-RSF-000209
34,242 acres
as of 9/4/2023 2100

ANVIL
OR-RSF-000413
313 acres
as of 9/6/2023 2115

- | | | | | | | | | |
|-------------------------|-------------------|-----------------------|------------------------|-----------------------------------|------------------------------------|------------------------------|---------------------------------|--------------------------------------|
| ○ Aerial Hazard | ⊠ Closure | ○ Landmark | ○ Water Source | Completed Mixed Construction Line | Planned Mixed Construction Line | Fire Edge (Field Collection) | Bureau of Land Management (BLM) | US Fish and Wildlife Service (USFWS) |
| ○ Dip Site | ⊠ Camp | ○ Mobile Weather Unit | ○ Completed Dozer Line | Completed Fuel Break | Other Temporary Flight Restriction | US Forest Service Wilderness | Local Government | US Forest Service (USFS) |
| ○ Helibase | ⊠ Lookout | ○ Repeater | ○ Completed Hand Line | Completed Road as Line | | | State | |
| ⊠ Division Break | ○ Hot Spot - Spot | ○ Safety Zone | | | | | | |
| ⊠ Incident Command Post | ○ Fire | ○ Hazard | | | | | | |

