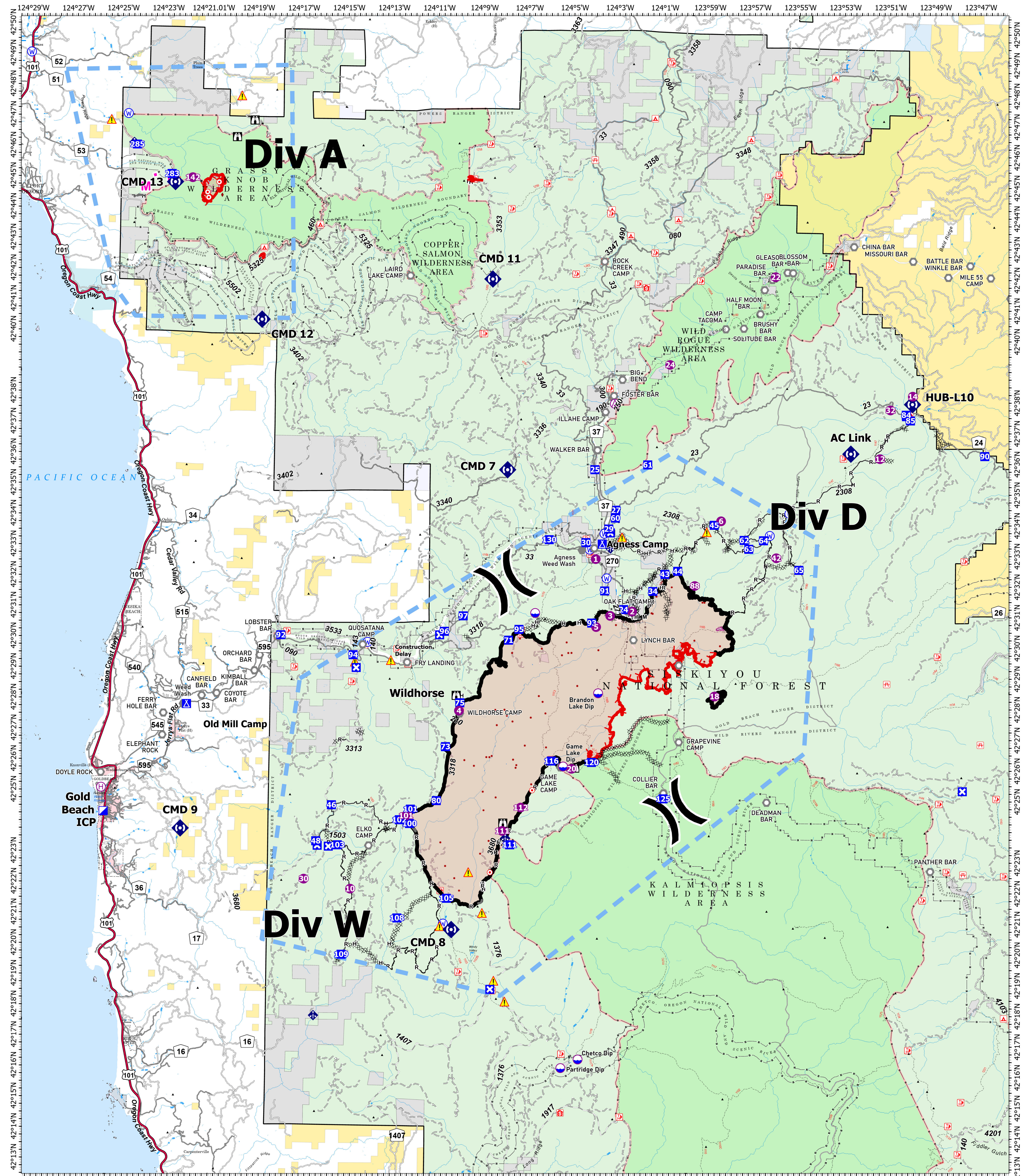


# BRIEFING - FLAT/ANVIL

# 9/8/2023



**FLAT**  
OR-RSF-000209  
34,242 acres  
as of 9/4/2023 2100

**ANVIL**  
OR-RSF-000413  
331 acres  
as of 9/7/2023 2100

- |                         |                   |                       |                        |                                     |                              |                                |                                   |  |
|-------------------------|-------------------|-----------------------|------------------------|-------------------------------------|------------------------------|--------------------------------|-----------------------------------|--|
| ○ Aerial Hazard         | ⊠ Closure         | ○ Landmark            | ○ Water Source         | — Completed Mixed Construction Line | — Planned Mixed Construction | — Fire Edge (Field Collection) | — Bureau of Land Management (BLM) | — US Fish and Wildlife Service (USFWS) |
| ○ Dip Site              | ⊠ Camp            | ○ Mobile Weather Unit | ⊠ Completed Dozer Line | — Other                             | — US Forest Service          | — Service Wilderness           | — Local Government                | — US Forest Service (USFS)             |
| ○ Helibase              | ⊠ Lookout         | ⊠ Repeater            | ⊠ Completed Fuel Break | — Temporary Flight Restriction      | — State                      |                                |                                   |  |
| ⊠ Division Break        | ○ Hot Spot - Spot | ⊠ Safety Zone         | ⊠ Completed Hand Line  |                                     |                              |                                |                                   |  |
| ⊠ Incident Command Post | ○ Fire            | ⊠ Hazard              |                        |                                     |                              |                                |                                   |  |

