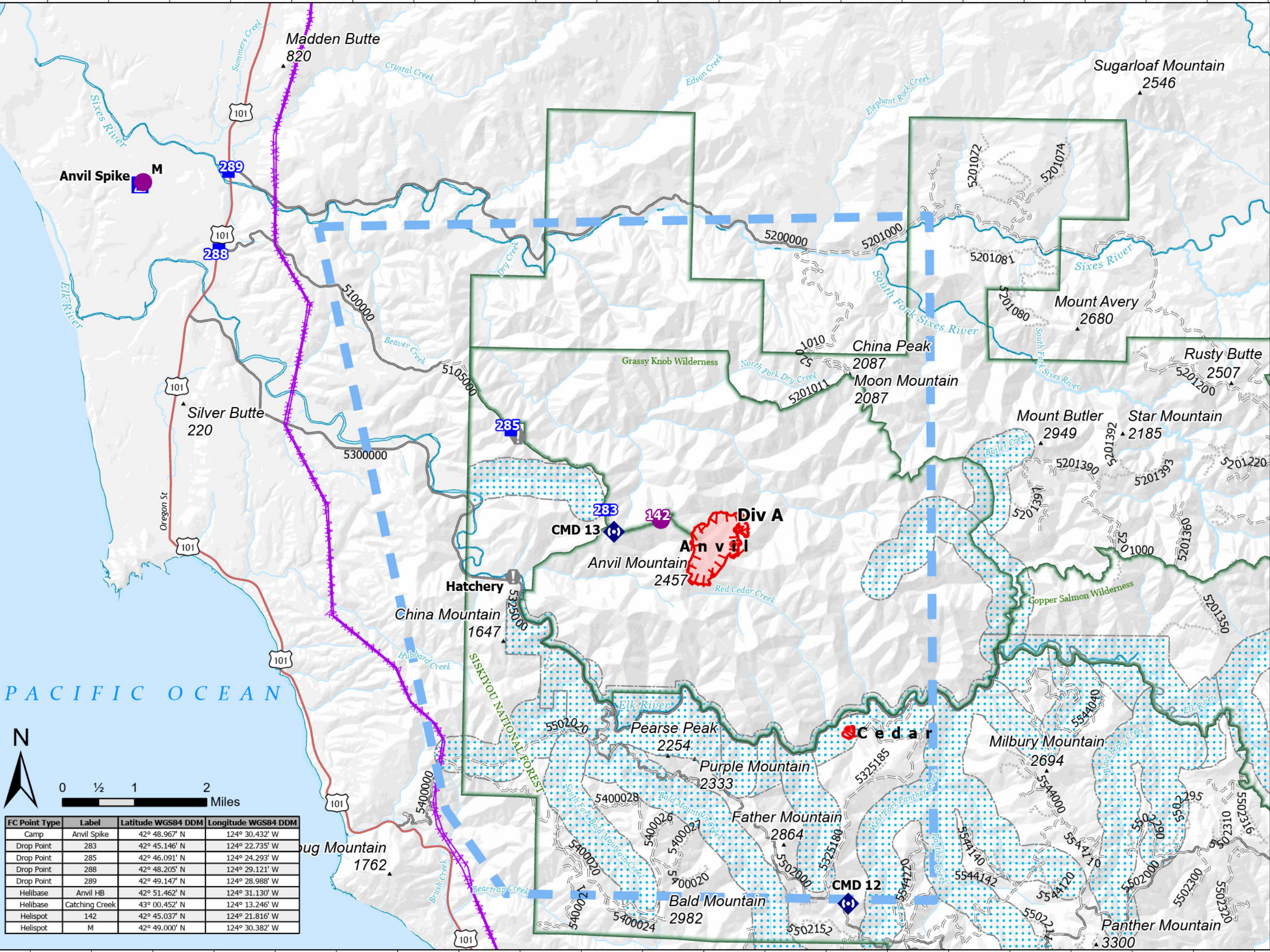


# Pilot

Anvil  
 OR-RSF-000413  
 9/8/2023  
 331 acres at 9/7/2023 2100

- Helispot
- Drop Point
- ▲ Camp
- ⚠ Value at Risk
- ⬢ Repeater
- ▬ Temporary Flight Restriction
- ▬ Uncontained
- ▬ Transmission Lines
- ▬ Paved Road
- ▬ Gravel Road
- ▬ Unimproved Road
- ▬ Closed Road



FC Point Type	Label	Latitude WGS84 DDM	Longitude WGS84 DDM
Camp	Anvil Spike	42° 48.967' N	124° 30.432' W
Drop Point	283	42° 45.146' N	124° 22.735' W
Drop Point	285	42° 46.091' N	124° 24.293' W
Drop Point	288	42° 48.205' N	124° 29.121' W
Drop Point	289	42° 49.147' N	124° 28.988' W
Helibase	Anvil HB	42° 51.462' N	124° 31.130' W
Helibase	Catching Creek	43° 00.452' N	124° 13.246' W
Helispot	142	42° 45.037' N	124° 21.816' W
Helispot	M	42° 49.000' N	124° 30.382' W