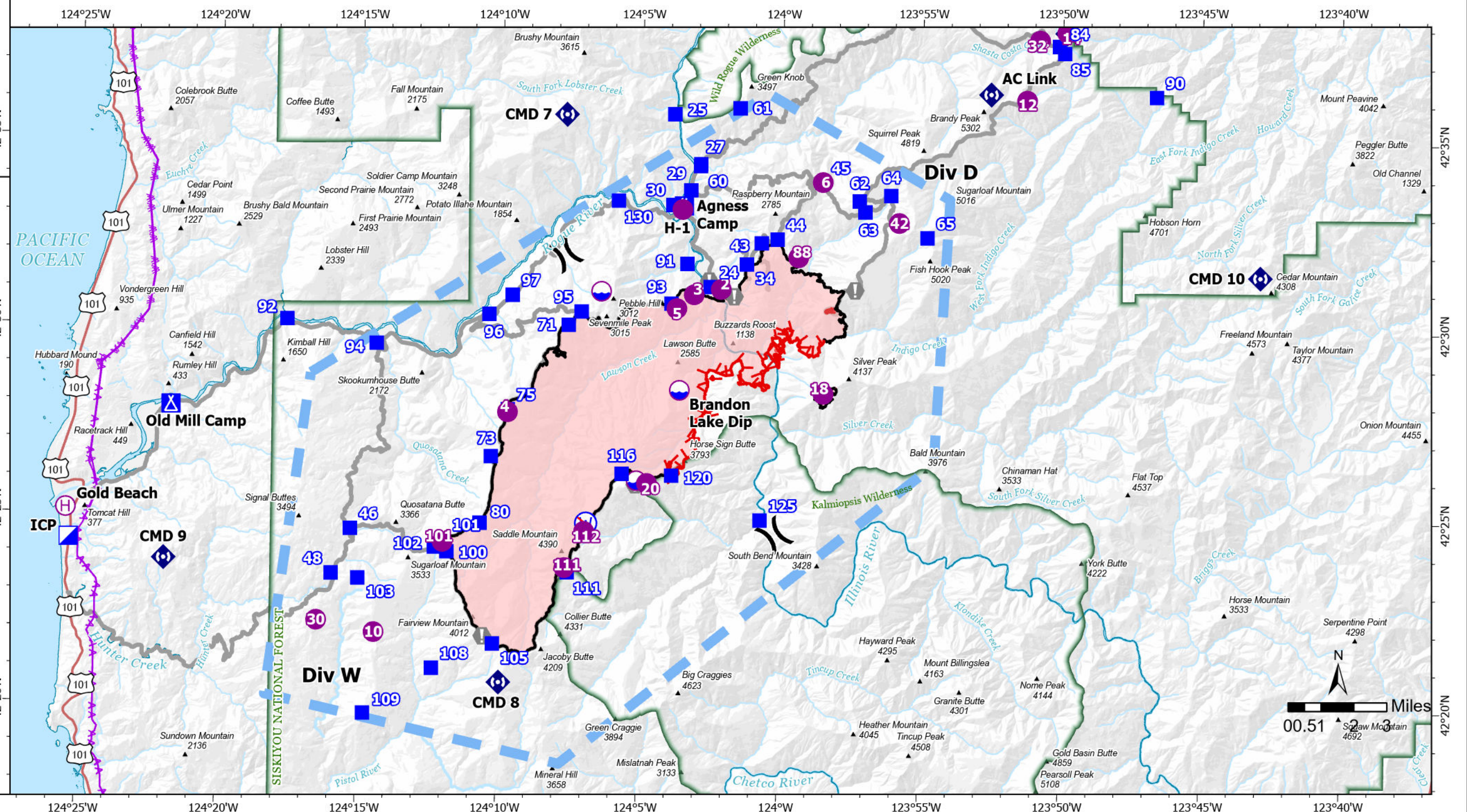


# Pilot

Flat  
OR-RSF-000209  
9/8/2023

34,242 acres at 9/4/2023 2100

- Dip Site
- Helispot
- Helibase
- Division Break
- Incident Command Post
- Drop Point
- Camp
- Value at Risk
- Repeater
- Restricted Water Source
- Temporary Flight Restriction
- Contained
- Uncontained
- Transmission Lines
- Egress Routes



FC Point Type	Label	Latitude WGS84 DDM	Longitude WGS84 DDM
Camp	Agness Camp	42° 33.270' N	124° 03.499' W
Camp	Old Mill Camp	42° 27.876' N	124° 21.723' W
Drop Point	100	42° 24.072' N	124° 11.827' W
Drop Point	101	42° 24.382' N	124° 11.940' W
Drop Point	102	42° 24.191' N	124° 12.280' W
Drop Point	103	42° 23.344' N	124° 14.991' W
Drop Point	105	42° 21.652' N	124° 10.162' W
Drop Point	108	42° 20.989' N	124° 12.324' W
Drop Point	109	42° 19.781' N	124° 14.752' W
Drop Point	111	42° 23.555' N	124° 07.534' W
Drop Point	116	42° 26.176' N	124° 05.623' W
Drop Point	120	42° 26.145' N	124° 03.853' W
Drop Point	125	42° 24.986' N	124° 00.684' W
Drop Point	130	42° 33.392' N	124° 05.839' W
Drop Point	24	42° 31.138' N	124° 02.527' W
Drop Point	25	42° 35.690' N	124° 03.865' W
Drop Point	27	42° 34.379' N	124° 02.919' W

FC Point Type	Label	Latitude WGS84 DDM	Longitude WGS84 DDM
Drop Point	29	42° 33.686' N	124° 03.261' W
Drop Point	30	42° 33.292' N	124° 03.892' W
Drop Point	34	42° 31.744' N	124° 01.244' W
Drop Point	43	42° 32.308' N	124° 00.720' W
Drop Point	44	42° 32.411' N	124° 00.156' W
Drop Point	45	42° 33.924' N	123° 58.569' W
Drop Point	46	42° 24.651' N	124° 15.277' W
Drop Point	48	42° 23.466' N	124° 15.941' W
Drop Point	60	42° 34.327' N	124° 02.922' W
Drop Point	61	42° 35.867' N	124° 01.534' W
Drop Point	62	42° 33.443' N	123° 57.241' W
Drop Point	63	42° 33.156' N	123° 57.034' W
Drop Point	64	42° 33.596' N	123° 56.115' W
Drop Point	65	42° 32.487' N	123° 54.807' W
Drop Point	71	42° 30.095' N	124° 07.576' W
Drop Point	73	42° 26.597' N	124° 10.293' W
Drop Point	75	42° 27.842' N	124° 09.711' W

FC Point Type	Label	Latitude WGS84 DDM	Longitude WGS84 DDM
Drop Point	80	42° 24.836' N	124° 10.663' W
Drop Point	84	42° 37.578' N	123° 50.141' W
Drop Point	85	42° 37.395' N	123° 49.954' W
Drop Point	90	42° 36.255' N	123° 46.656' W
Drop Point	91	42° 31.741' N	124° 03.367' W
Drop Point	92	42° 30.166' N	124° 17.616' W
Drop Point	93	42° 30.686' N	124° 03.918' W
Drop Point	94	42° 29.550' N	124° 14.418' W
Drop Point	95	42° 30.450' N	124° 07.122' W
Drop Point	96	42° 30.355' N	124° 10.412' W
Drop Point	97	42° 30.867' N	124° 09.589' W
Helibase	Flat HB	42° 30.432' N	123° 23.001' W
Helibase	Gold Beach	42° 25.122' N	124° 25.429' W
Helispot	10	42° 21.921' N	124° 14.401' W
Helispot	101	42° 24.329' N	124° 11.987' W
Helispot	111	42° 23.680' N	124° 07.637' W
Helispot	112	42° 24.644' N	124° 06.949' W

FC Point Type	Label	Latitude WGS84 DDM	Longitude WGS84 DDM
Helispot	12	42° 36.138' N	123° 51.281' W
Helispot	14	42° 37.930' N	123° 49.877' W
Helispot	18	42° 28.340' N	123° 58.473' W
Helispot	2	42° 31.077' N	124° 02.148' W
Helispot	20	42° 25.930' N	124° 04.731' W
Helispot	22	42° 42.040' N	123° 56.070' W
Helispot	24	42° 39.137' N	124° 00.595' W
Helispot	3	42° 30.928' N	124° 03.111' W
Helispot	30	42° 22.225' N	124° 16.451' W
Helispot	32	42° 37.729' N	123° 50.837' W
Helispot	4	42° 27.775' N	124° 09.719' W
Helispot	42	42° 32.873' N	123° 55.816' W
Helispot	5	42° 30.558' N	124° 03.724' W
Helispot	6	42° 33.957' N	123° 58.456' W
Helispot	88	42° 31.938' N	123° 59.397' W
Helispot	H-1	42° 33.176' N	124° 03.552' W
Incident Command Post	ICP	42° 24.337' N	124° 25.313' W