

Flat REPAIR
 OR-RSF-000209
 9/8/2023
 Div D East
 34,242 acres at 9/4/2023 2100

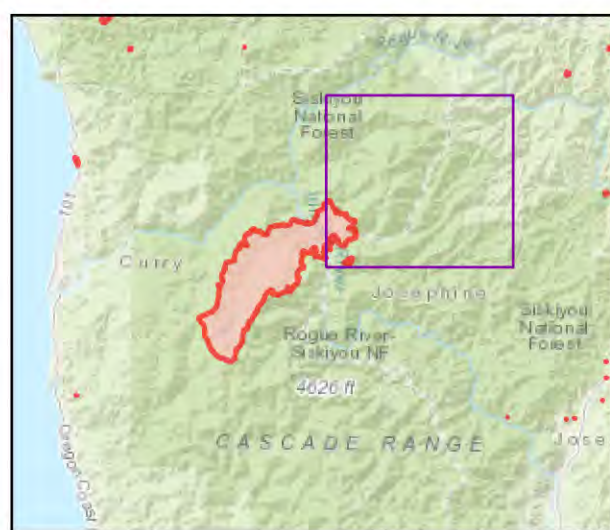


- Repair Status
- Needs Assessment
 - Repair Needed
 - Completed - Ready for Inspection
 - Repair Needed
 - In Progress
 - Completed - Ready for Inspection
 - Completed - Inspected
 - Helispot
 - Drop Point
 - ⊠ Closure
 - ⊕ Value at Risk
 - Other
 - Landmark
 - Gate
 - Bridge
 - Road Repair
 - Repair Point
 - Dozer Push
 - Culvert
 - Internet Access
 - Repeater
 - ⚠ Hazard
 - Ⓜ Water Source
 - Ⓟ Pump
 - Ⓢ Water Tank
 - ⊗⊗ Completed Dozer Line
 - Completed Hand Line
 - Completed Road as Line
 - Access or Improved Road
 - Temporary Flight Restriction
 - ▬ Contained
 - ▬ Uncontained

Event Points
 NO Repair Points IF Repair Status = "No Repair Needed"

Repair Status - Points
 NO Repair Status = "In Use" or "No Repair Needed"

Repair Status Lines
 NO Access Roads or Road as Line
 NO Repair Status = "In Use" or "No Repair Needed"



Scan for digital maps



9/7/2023 1832

NAD 1983 2011 Datum, LatLong Grid

