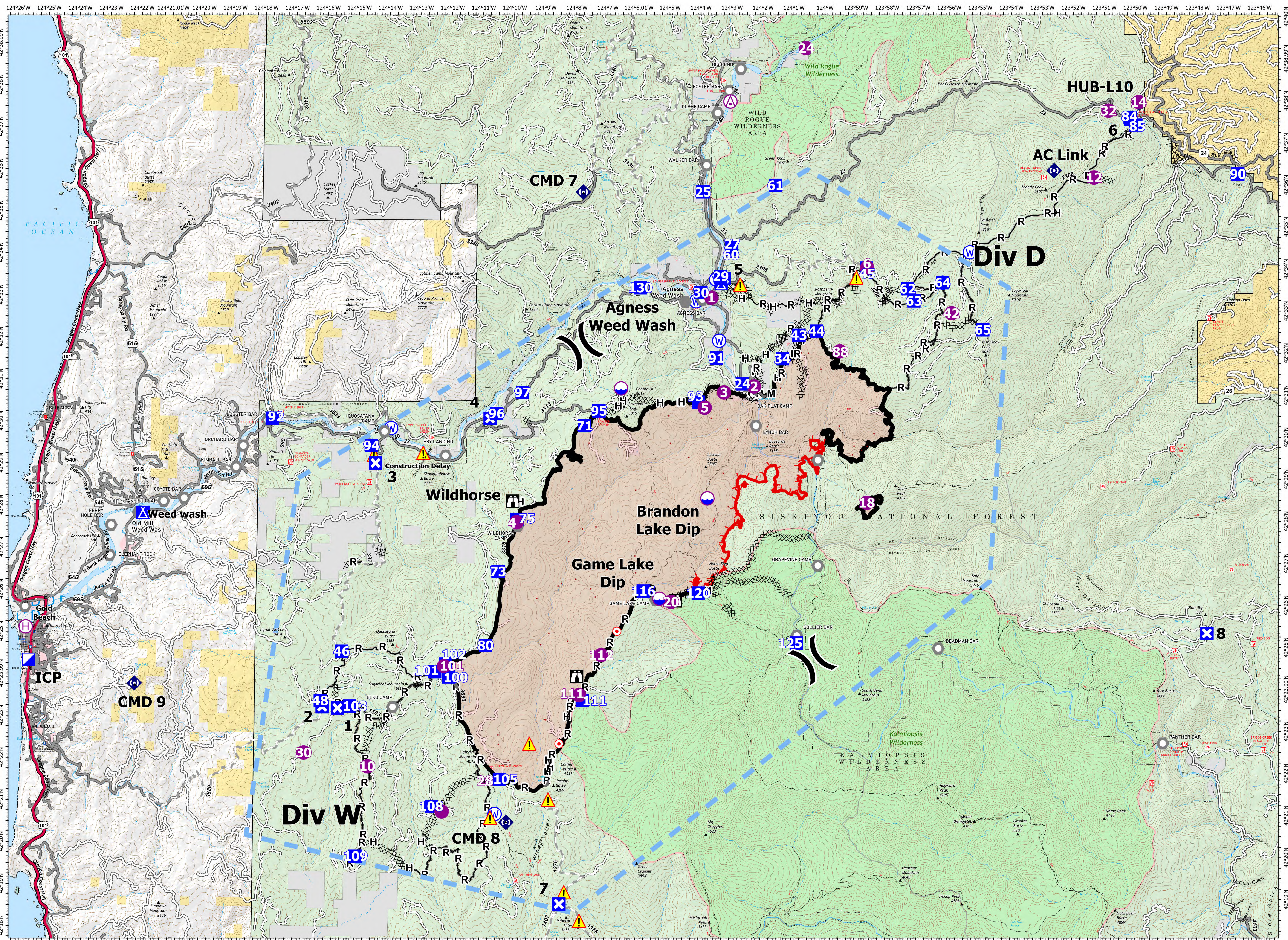


Map Created: 9/11/2023 at 08:19



FLAT
OR-RSF-000209
34,242 acres

- Aerial Hazard
- Dip Site
- Helibase
- Helisite
- X Division Break
- X Incident Command Post
- X Drop Point
- X Closure
- X Camp
- X Lookout
- X Hot Spot - Spot Fire
- Other
- Landmark
- Repeater
- Hazard
- Water Source
- IR Isolated Heat Source
- X Completed Dozer Line
- ▲ Completed Fuel Break
- H Completed Hand Line
- M Completed Mixed Construction Line
- R Completed Road as Line
- R Other
- R Repeater
- R Completed Mixed Construction Line
- R Temporary Flight Restriction
- Contained
- Uncontained
- US Forest Service Wilderness
- Bureau of Land Management (BLM)
- State
- US Fish and Wildlife Service (USFWS)
- US Forest Service (USFS)