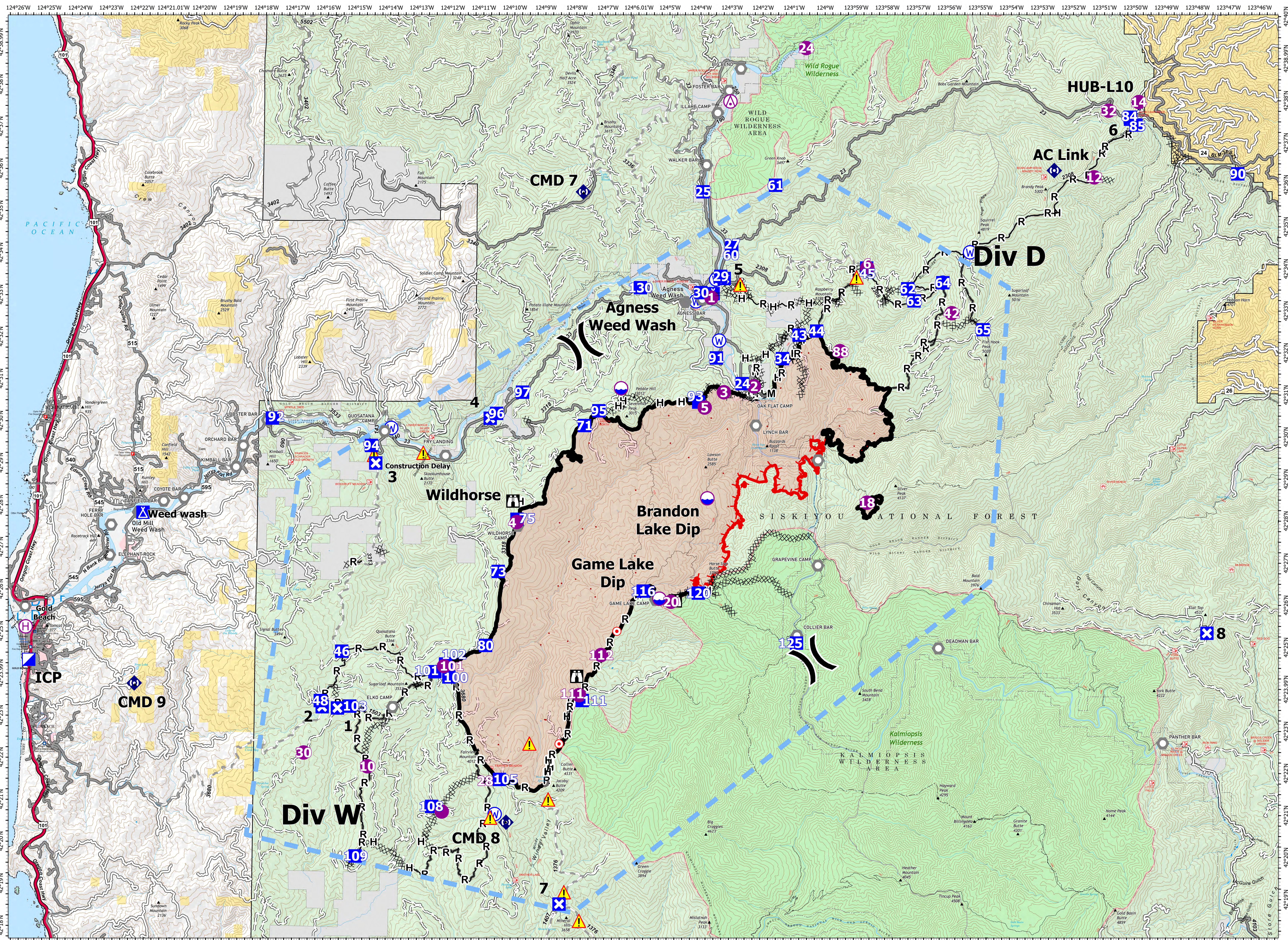


Map Created: 9/10/2023 at 17:48



FLAT
OR-RSF-000209
34,242 acres

- Aerial Hazard
- Dip Site
- Helibase
- Helipost
- Hot Spot - Spot Fire
- Incident Command Post
- Drop Point
- Closure
- Camp
- Lookout
- Hot Spot - Spot Fire
- Other
- Landmark
- Repeater
- Hazard
- Water Source
- IR Isolated Heat Source
- Completed Dozer Line
- Completed Fuel Break
- Completed Hand Line
- Completed Mixed Construction Line
- Completed Road as Line
- Other
- Repeater
- Temporary Flight Restriction
- Contained
- Uncontained
- US Forest Service Wilderness
- Bureau of Land Management (BLM)
- State
- US Fish and Wildlife Service (USFWS)
- US Forest Service (USFS)

0 1 2 3 Miles