

**Flat REPAIR**  
OR-RSF-000209  
9/11/2023  
Div D East  
34,242 acres at 9/7/2023 2120

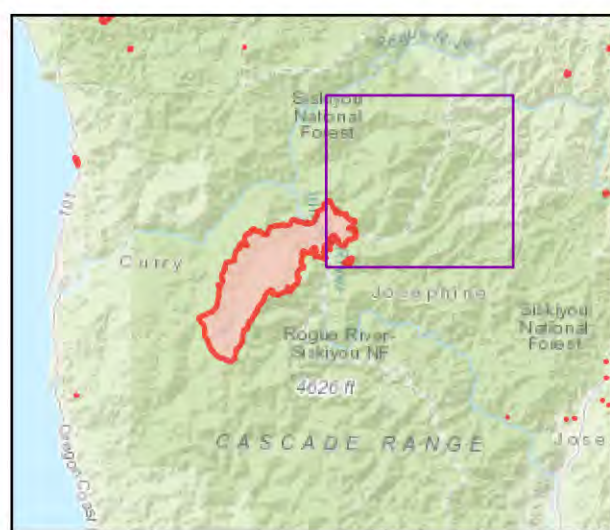


- Repair Status
- Needs Assessment
  - Repair Needed
  - Completed - Ready for Inspection
  - Completed - Inspected
  - Repair Needed
  - In Progress
  - Completed - Ready for Inspection
  - Completed - Inspected
- Other Symbols
- Helispot
  - Drop Point
  - ⊠ Closure
  - Value at Risk
  - Other
  - Landmark
  - Gate
  - Bridge
  - Road Repair
  - Repair Point
  - Dozer Push
  - ◆ Internet Access
  - ◆ Repeater
  - ▲ Hazard
  - ⊙ Water Source
  - ⊙ Pump
  - ⊙ Water Tank
  - ⊗ Completed Dozer Line
  - Completed Hand Line
  - Completed Road as Line
  - Access or Improved Road
  - Temporary Flight Restriction
  - Contained
  - Uncontained

Event Points  
NO Repair Points IF Repair Status = "No Repair Needed"

Repair Status - Points  
NO Repair Status = "In Use" or "No Repair Needed"

Repair Status Lines  
NO Access Roads or Road as Line  
NO Repair Status = "In Use" or "No Repair Needed"



Scan for digital maps



9/10/2023 1944

NAD 1983 2011 Datum, LatLong Grid

