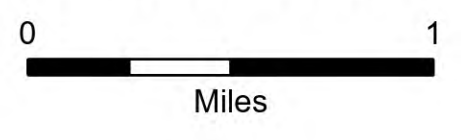


Flat REPAIR

OR-RSF-000209
9/11/2023
Div D North
34,242 acres at 9/7/2023 2120

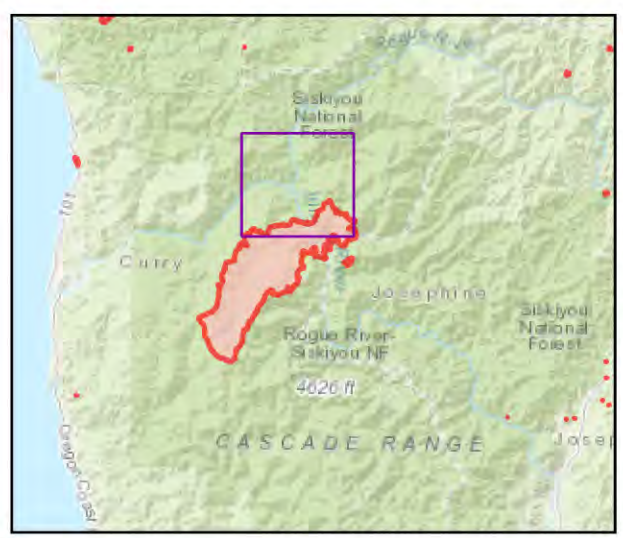


- | | |
|---|---|
| <ul style="list-style-type: none"> Needs Assessment Repair Needed Completed - Inspected Repair Needed In Progress Completed - Ready for Inspection Completed - Inspected Dip Site Hellspot Division Break Drop Point Closure Camp Value at Risk Other Landmark Bridge Water Development or Draft Site Road Repair Retardant in Avoidance Area Repair Point Dozer Push Culvert Clean Up Area Mobile Weather Unit Repeater Hazard Water Source Pump Water Tank Completed Dozer Line Completed Fuel Break Completed Hand Line Completed Mixed Construction Line Completed Road as Line Access or Improved Road Temporary Flight Restriction Contained GNIS_USGS_Mountain_Features Fire Station Other - See Comments | <ul style="list-style-type: none"> Event Line Repair Status TABLE-HIGH GNIS Populated Places Some Campground Trailhead Trail National Designated Trail Paved Road Gravel Road Dirt Roads Unimproved Roads Closed Roads Paved Roads Dirt (Not Paved) Egress Routes FS Common Unit Names Administrative FS Boundary Ranger District Boundary Federal Wilderness Boundary State Boundary County Boundary Lake / Pond Lake / Pond (Intermittent) Gaging Station Spring/Seep Stream / River Stream/River; Artificial Path Stream/River Intermittent Section Normal Index Normal Intermediate Freshwater Emergent Wetland Freshwater Forested/Shrub Wetland Freshwater Pond World Hillshade Scenic Byway Wild and Scenic River Forest Service Land Other State Lands State Boundary Fill |
|---|---|

Event Points
NO Repair Points IF Repair Status = "No Repair Needed"

Repair Status - Points
NO Repair Status = "In Use" or "No Repair Needed"

Repair Status Lines
NO Access Roads or Road as Line
NO Repair Status = "In Use" or "No Repair Needed"



Scan for digital maps

9/10/2023 1946
NAD 1983 2011 Datum. LatLong Grid

