

# Flat REPAIR

OR-RSF-000209

9/11/2023

Div W East

34,242 acres at 9/7/2023 2120

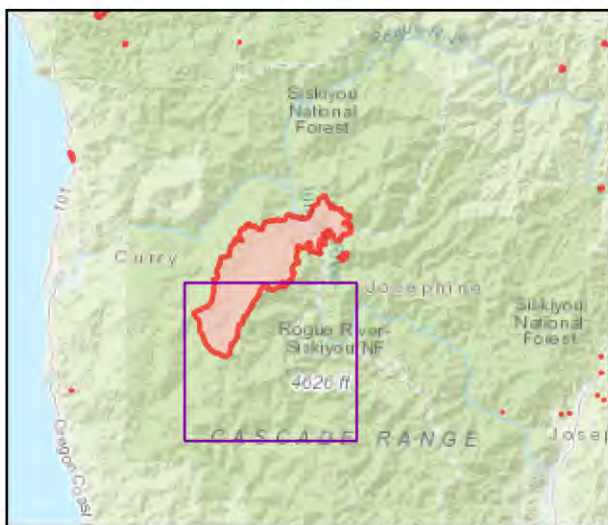


- Repair Status
  - Needs Assessment
  - Repair Needed
  - In Progress
  - Completed - Inspected
  - Needs Assessment
  - Repair Needed
  - In Progress
  - Completed - Ready for Inspection
  - Completed - Inspected
  - Dip Site
  - Helispot
  - Division Break
  - Drop Point
  - Closure
  - Lookout
  - Hot Spot - Spot Fire
  - Value at Risk
  - Other
  - Landmark
  - Gate
  - Bridge
  - Stream Crossing
  - Road Repair
  - Repair Point
  - Landing or Log Deck
  - Dozer Push
  - Culvert
  - Mobile Weather Unit
  - Internet Access
  - Repeater
  - Hazard
  - Water Source
  - Restricted Water Source
  - Pump
  - Completed Dozer Line
  - Completed Fuel Break
  - Completed Hand Line
  - Completed Road as Line
  - Access or Improved Road
  - Repair Line
  - Temporary Flight Restriction
  - Contained
  - Uncontained
- GNIS\_USGS\_Mountain\_Features Valley (Not Canyon) 15050
- Repair Needed
- Event Line Repair Status TABLE-HIGH
- EventPolygon
- Trailhead
- Boating Site
- Trail
- National Designated Trail
- Gravel Road
- Dirt Roads
- Unimproved Roads
- Closed Roads
- Dirt (Not Paved)
- Egress Routes
- FS Common Unit Names
- Administrative FS Boundary
- Ranger District Boundary
- Federal Wilderness Boundary
- State Boundary
- County Boundary
- Lake / Pond
- Lake / Pond (Intermittent)
- Spring/Seep
- Rapids
- Stream / River
- Stream/River; Artificial Path
- Stream/River Intermittent
- Township/Range
- Section Protracted
- Section
- Depression Intermediate
- Normal Index
- Normal Intermediate
- Freshwater Emergent Wetland
- Freshwater Forested/Shrub Wetland
- Freshwater Pond
- World Hillshade
- Wild and Scenic River
- Forest Service Land
- State Boundary Fill

Event Points  
NO Repair Points IF Repair Status = "No Repair Needed"

Repair Status - Points  
NO Repair Status = "In Use" or "No Repair Needed"

Repair Status Lines  
NO Access Roads or Road as Line  
NO Repair Status = "In Use" or "No Repair Needed"



Scan for digital maps



9/10/2023 1948

NAD 1983 2011 Datum. LatLong Grid

