

Flat REPAIR
OR-RSF-000209
9/13/2023
Div D East
34,242 acres at 9/7/2023 2120

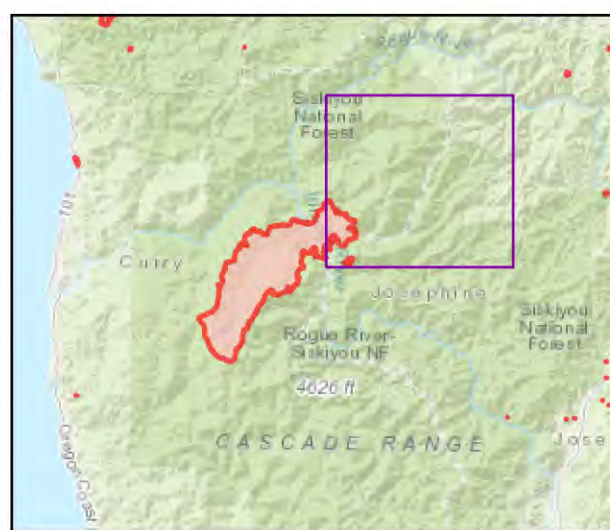


- Repair Status
- Needs Assessment
 - Repair Needed
 - Completed - Inspected
 - Repair Needed
 - In Progress
 - Completed - Ready for Inspection
 - Completed - Inspected
 - Helispot
 - Drop Point
 - ⊠ Closure
 - Value at Risk
 - Other
 - Landmark
 - ⊙ Gate
 - ⊙ Bridge
 - ⬆ Road Repair
 - ⬆ Repair Point
 - ⬆ Dozer Push
 - ⬆ Internet Access
 - ⬆ Repeater
 - ⚠ Hazard
 - Ⓜ Water Source
 - Ⓜ Pump
 - Ⓜ Water Tank
 - ⊠⊠ Completed Dozer Line
 - H Completed Hand Line
 - R Completed Road as Line
 - Access or Improved Road
 - Temporary Flight Restriction
 - ▭ Contained
 - ▭ Uncontained

Event Points
NO Repair Points IF Repair Status = "No Repair Needed"

Repair Status - Points
NO Repair Status = "In Use" or "No Repair Needed"

Repair Status Lines
NO Access Roads or Road as Line
NO Repair Status = "In Use" or "No Repair Needed"



Scan for digital maps



9/12/2023 2112

NAD 1983 2011 Datum, LatLong Grid

