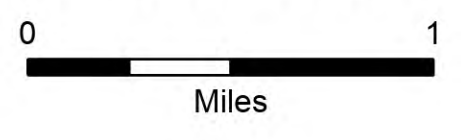


Flat REPAIR

OR-RSF-000209
9/13/2023
Div D North
34,242 acres at 9/7/2023 2120

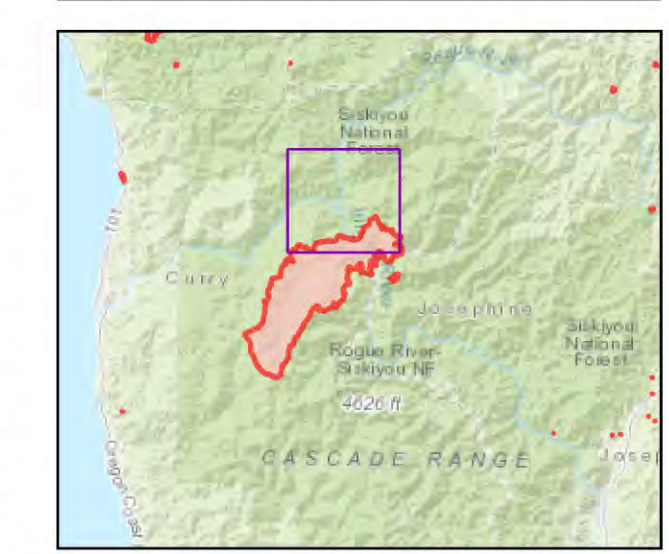


- Repair Status**
 - Needs Assessment
 - Repair Needed
 - Completed - Inspected
 - Repair Needed
 - In Progress
 - Completed - Ready for Inspection
 - Completed - Inspected
 - Dip Site
 - Hellspot
 - Division Break
 - Drop Point
 - Closure
 - Camp
 - Value at Risk
 - Other
 - Landmark
 - Bridge
 - Water Development or Draft Site
 - Road Repair
 - Retardant in Avoidance Area
 - Repair Point
 - Dozer Push
 - Culvert
 - Clean Up Area
 - Mobile Weather Unit
 - Repeater
 - Hazard
 - Water Source
 - Pump
 - Water Tank
 - Completed Dozer Line
 - Completed Fuel Break
 - Completed Hand Line
 - Completed Mixed Construction Line
 - Completed Road as Line
 - Access or Improved Road
 - Temporary Flight Restriction
 - Contained
 - GNIS_USGS_Mountain_Features
 - Fire Station
 - Other - See Comments
- Event Line Repair Status TABLE-HIGH**
 - EventPolygon
 - GNIS Populated Places Some
 - Campground
 - Trailhead
 - Trail
 - National Designated Trail
 - Paved Road
 - Gravel Road
 - Dirt Roads
 - Unimproved Roads
 - Closed Roads
 - Paved Roads
 - Dirt (Not Paved)
 - Egress Routes
 - FS Common Unit Names
 - Administrative FS Boundary
 - Ranger District Boundary
 - Federal Wilderness Boundary
 - State Boundary
 - County Boundary
 - Lake / Pond
 - Lake / Pond (Intermittent)
 - Gaging Station
 - Spring/Seep
 - Rapids
 - Stream / River
 - Stream/River; Artificial Path
 - Stream/River Intermittent
 - Township/Range
 - Section
 - Normal Index
 - Normal Intermediate
 - Freshwater Emergent Wetland
 - Freshwater Forested/Shrub Wetland
 - Freshwater Pond
 - World Hillshade
 - Scenic Byway
 - Wild and Scenic River
 - Forest Service Land
 - Other State Lands
 - State Boundary Fill

Event Points
NO Repair Points IF Repair Status = "No Repair Needed"

Repair Status - Points
NO Repair Status = "In Use" or "No Repair Needed"

Repair Status Lines
NO Access Roads or Road as Line
NO Repair Status = "In Use" or "No Repair Needed"



Scan for digital maps

9/12/2023 2114
NAD 1983 2011 Datum. LatLong Grid

