

Flat REPAIR

OR-RSF-000209

9/13/2023

Div W East

34,242 acres at 9/7/2023 2120

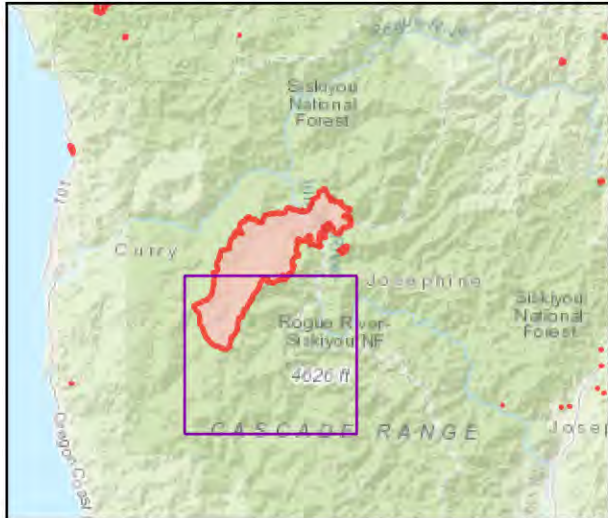


- Repair Status
 - Needs Assessment
 - Repair Needed
 - In Progress
 - Completed - Inspected
 - Needs Assessment
 - Repair Needed
 - In Progress
 - Completed - Ready for Inspection
 - Completed - Inspected
- GNIS_USGS_Mountain_Features Valley (Not Canyon) 15050
- Repair Needed
- Event Line Repair Status TABLE-HIGH
- EventPolygon
- Trailhead
- Boating Site
- Trail
- National Designated Trail
- Gravel Road
- Dirt Roads
- Unimproved Roads
- Closure
- Closed Roads
- Dirt (Not Paved)
- Egress Routes
- FS Common Unit Names
- Administrative FS Boundary
- Ranger District Boundary
- County Boundary
- Lake / Pond
- Lake / Pond (Intermittent)
- Spring/Seep
- Stream / River
- Stream/River; Artificial Path
- Stream/River Intermittent
- Stream/River Intermittent
- Township/Range
- Section Protracted
- Section
- Depression Intermediate
- Normal Index
- Normal Intermediate
- Freshwater Emergent Wetland
- Freshwater Forested/Shrub Wetland
- Freshwater Pond
- World Hillshade
- Wild and Scenic River
- Forest Service Land
- State Boundary Fill
- Completed Dozer Line
- Completed Fuel Break
- Completed Hand Line
- Completed Road as Line
- Access or Improved Road
- Temporary Flight Restriction
- Contained
- Uncontained

Event Points
NO Repair Points IF Repair Status = "No Repair Needed"

Repair Status - Points
NO Repair Status = "In Use" or "No Repair Needed"

Repair Status Lines
NO Access Roads or Road as Line
NO Repair Status = "In Use" or "No Repair Needed"



Scan for digital maps



9/12/2023 2116

NAD 1983 2011 Datum. LatLong Grid

