

# Flat REPAIR

OR-RSF-000209

9/13/2023

Div W West

34,242 acres at 9/7/2023 2120

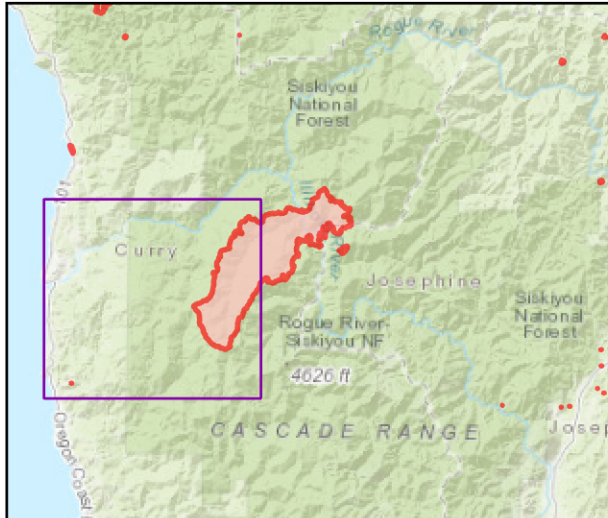


- Repair Status
  - Needs Assessment
  - Repair Needed
  - In Progress
  - Completed - Ready for Inspection
  - Completed - Inspected
  - Other - See Comments
- Needs Assessment
- In Progress
- Completed - Ready for Inspection
- Completed - Inspected
- Dip Site
- Heliport
- Incident Command Post
- Drop Point
- Closure
- Camp
- Lookout
- Hot Spot - Spot Fire
- Value at Risk
- Other
- Landmark
- Gate
- Bridge
- Stream Crossing
- Road Repair
- Repair Point
- Landing or Log Deck
- Dozer Push
- Culvert
- Mobile Weather Unit
- Repeater
- Hazard
- Water Source
- Restricted Water Source
- Pump
- Completed Dozer Line
- Completed Fuel Break
- Completed Hand Line
- Completed Road as Line
- Access or Improved Road
- Temporary Flight Restriction
- Contained
- GNIS\_USGS\_Mountain\_Features
- School
- Fire Station
- Hospital
- Law Enforcement
- Valley (Not Canyon) 15050

Event Points  
NO Repair Points IF Repair Status = "No Repair Needed"

Repair Status - Points  
NO Repair Status = "In Use" or "No Repair Needed"

Repair Status Lines  
NO Access Roads or Road as Line  
NO Repair Status = "In Use" or "No Repair Needed"



Scan for digital maps



9/12/2023 2118

NAD 1983 2011 Datum. LatLong Grid

