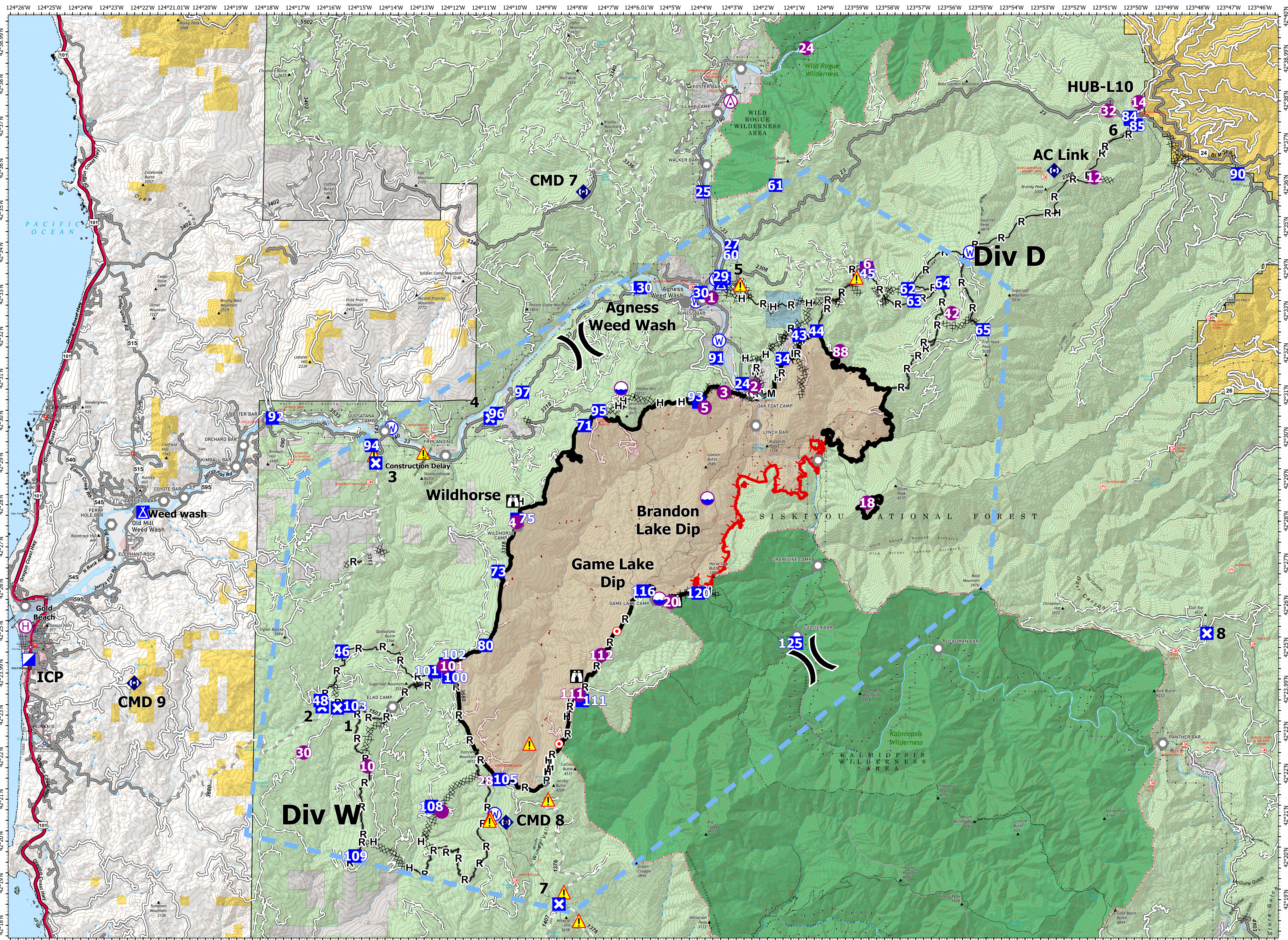


Map Created: 9/13/2023 at 21:35



FLAT
OR-RSF-000209
34,242 acres
as of 9/7/2023 2120

Aerial Hazard	Division Break	Closure	Other	Water Source	Completed Dozer Line	Completed Mixed Construction Line	Temporary Flight Restriction	US Forest Service Wilderness	US Fish and Wildlife Service (USFWS)
Dip Site	Incident Command Post	Camp	Landmark	IR Isolated Heat Source	Completed Fuel Break	Completed Road as Line	Contained	Bureau of Land Management (BLM)	US Forest Service (USFS)
Helispot	Drop Point	Lookout	Repeater	Possible IR Heat Source	Completed Hand Line	Other	Uncontained	State	
Helibase		Hot Spot - Spot Fire	Hazard						

