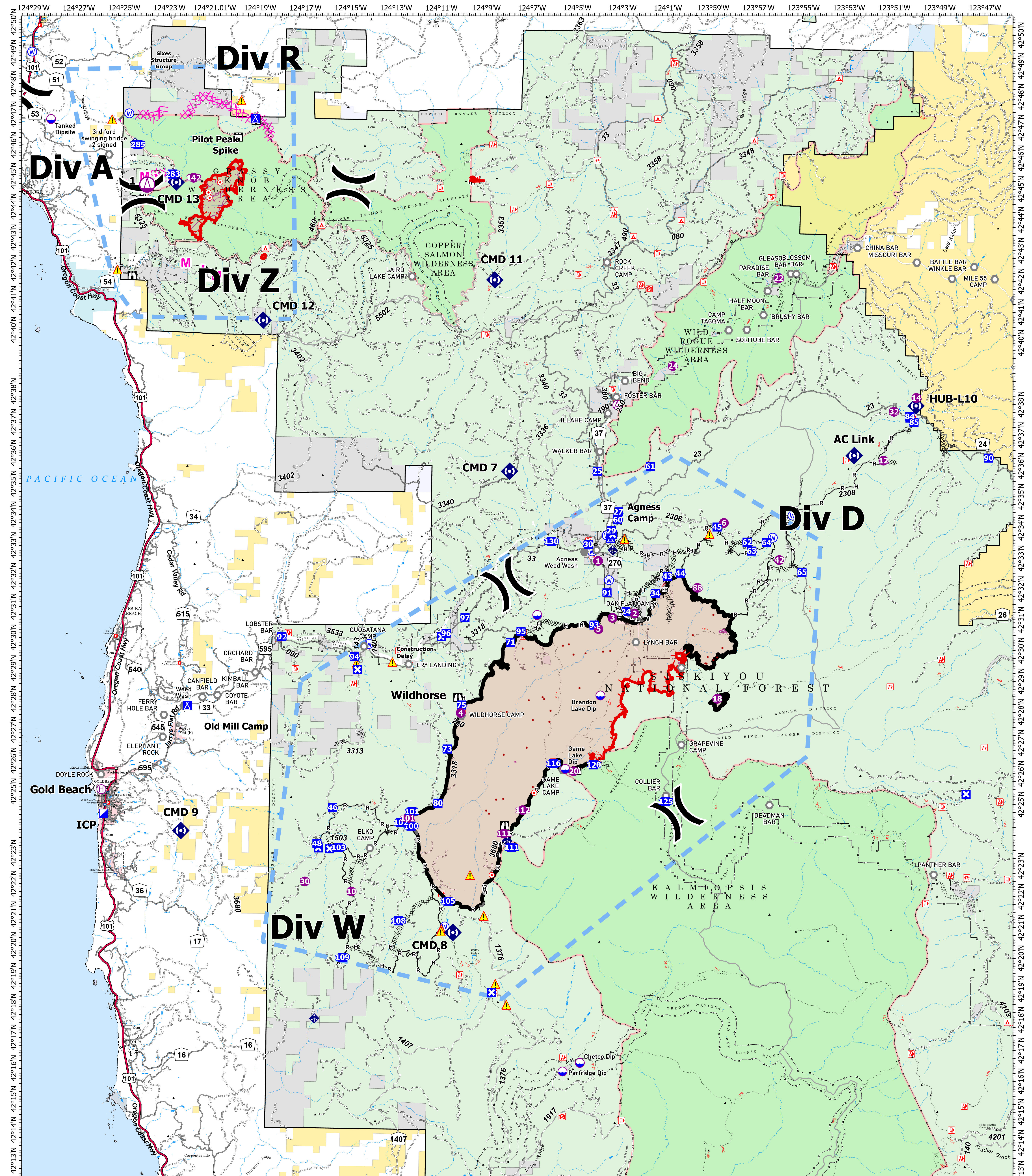


# BRIEFING - FLAT/ANVIL

# 9/14/2023



**FLAT**  
OR-RSF-000209  
34,242 acres  
as of 9/7/2023 2120

**ANVIL**  
OR-RSF-000413  
1433 acres  
as of 9/13/2023 2130

- |                 |                         |                        |                        |                        |                          |                      |                                |                                   |  |
|-----------------|-------------------------|------------------------|------------------------|------------------------|--------------------------|----------------------|--------------------------------|-----------------------------------|--|
| ● Helispot      | ⊗ Division Break        | ● Hot Spot - Spot Fire | ▲ Safety Zone          | — Completed Hand Line  | — Completed Road as Line | — Planned Mixed Line | ■ Fire Edge (Field Collection) | ■ Bureau of Land Management (BLM) | ■ US Fish and Wildlife Service (USFWS) |
| ■ Drop Point    | ⊗ Incident Command Post | ● Other                | ▲ Hazard               | — Completed Mixed Line | — Planned Dozer Line     | — Other              | ■ US Forest Service Wilderness | ■ Local Government                | ■ US Forest Service (USFS)             |
| ● Aerial Hazard | ⊗ Closure               | ○ Landmark             | ● Water Source         | — Completed Dozer Line | — Planned Hand Line      | — Temporary          | ■ State                        |                                   |  |
| ● Dip Site      | ⊗ Camp                  | ● Mobile Weather Unit  | — Completed Fuel Break |                        |                          | — Flight Restriction |                                |                                   |  |
| ● Helibase      | ⊗ Lookout               | ● Repeater             |                        |                        |                          |                      |                                |                                   |  |
| ● Sling Site    |                         |                        |                        |                        |                          |                      |                                |                                   |  |

0 1 2 3 Miles

