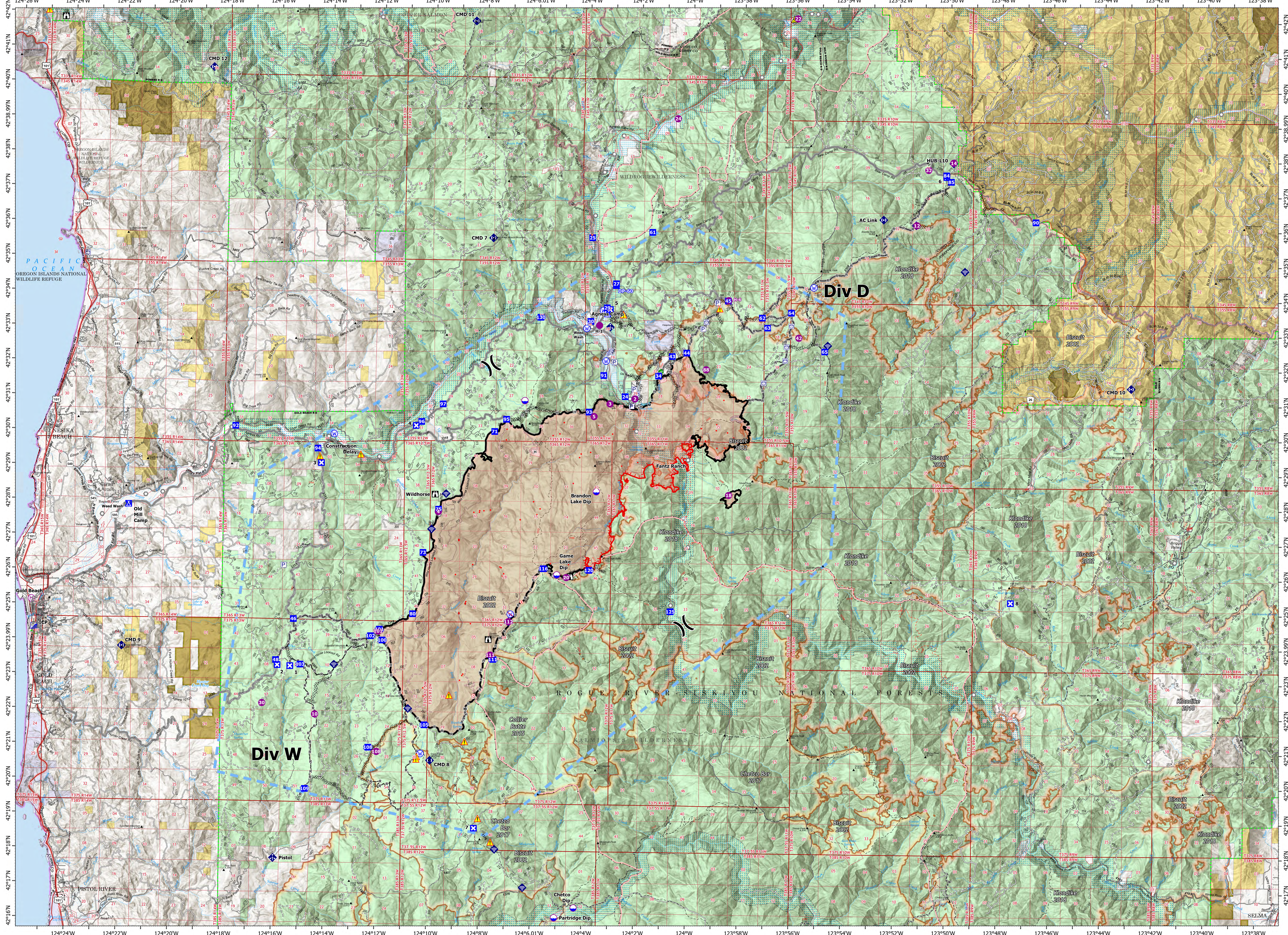


Map Created: 9/13/2023 21:38



| | | | | | | | | | | | | |
|--|--|-------------------------------------|--|--|---|--|---|---|---|--|-------------------|--|
| | FLAT OPERATIONS OR-RSF-000209 9/13/2023 | 34,242 acres as of 9/7/2023 2120 | Pump Water Tank Dip Site Helispot Helibase | Division Break Incident Command Post Drop Point Closure Camp | Lookout Hot Spot - Spot Fire Landmark Water Development or Draft Site Mobile Weather Unit | Internet Access Repeater Safety Zone Hazard Water Source | Restricted Water Source Completed Dozer Line Completed Fuel Break Completed Hand Line Completed Mixed Construction Line | Completed Road as Line Temporary Flight Restriction Contained Uncontained IR Isolated Heat Source | Possible IR Heat Source Daily Wildfire Perimeter Egress Routes BLM Area of Critical Environmental Concern Wild and Scenic River | Fire Year 2002 Fire Year 2015 Fire Year 2017 Fire Year 2018 Building Footprint | 0 1 2 3 Miles | |
|--|--|-------------------------------------|--|--|---|--|---|---|---|--|-------------------|--|